

## IIS2DULPX: machine learning core

### Introduction

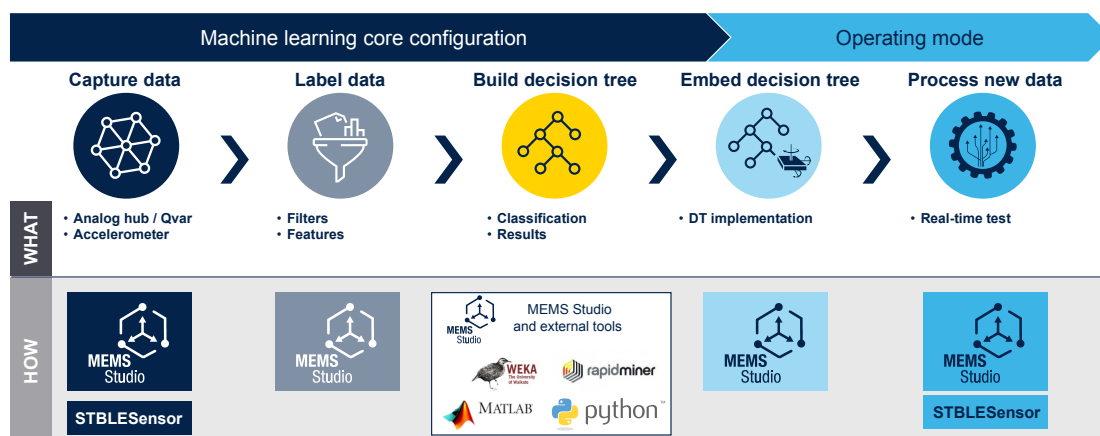
This document provides information on the machine learning core feature available in the IIS2DULPX. The machine learning processing capability allows moving some algorithms from the application processor to the MEMS sensor, enabling consistent reduction of power consumption.

The machine learning processing capability is obtained through decision-tree logic. A decision tree is a mathematical tool composed of a series of configurable nodes. Each node is characterized by an “if-then-else” condition, where an input signal (represented by statistical parameters calculated from the sensor data) is evaluated against a threshold.

The IIS2DULPX can be configured to run up to four decision trees simultaneously and independently. The decision trees are stored in the device and generate results in the dedicated output registers.

The results of the decision tree can be read from the application processor at any time. Furthermore, there is the possibility to generate an interrupt for every change in the result in the decision tree.

**Figure 1. Machine learning core supervised approach**



## 1 Machine learning core in the IIS2DULPX

The machine learning core (together with the finite state machine) is one of the main embedded features available in the IIS2DULPX. It is composed of a set of configurable parameters and decision trees able to implement algorithms in the sensor itself.

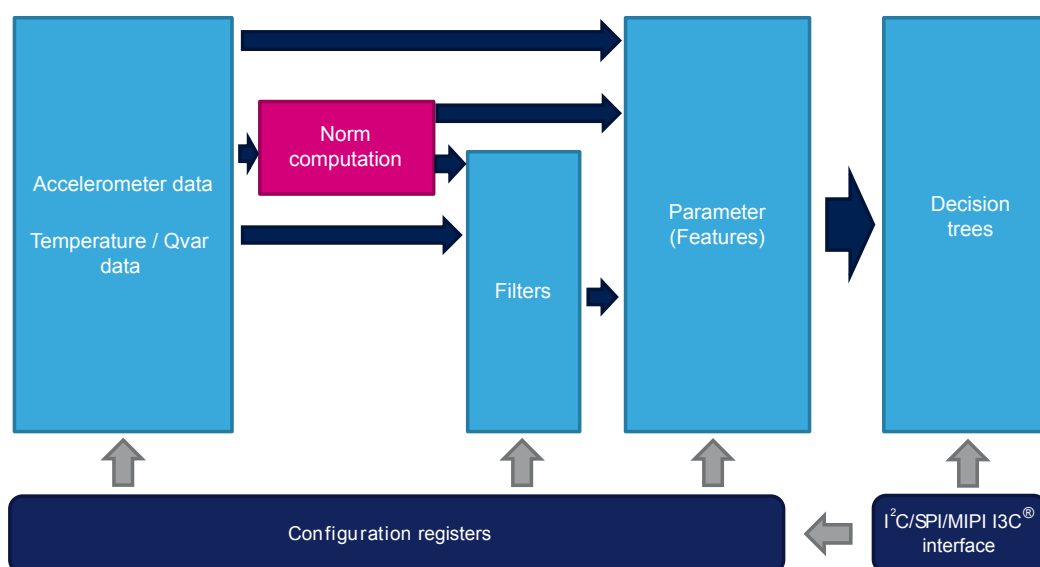
The classification algorithms suitable for the machine learning core are those which can be implemented by following an inductive approach, which involves searching patterns from observations. Some examples of algorithms that follow this approach are: activity recognition, fitness activity recognition, motion intensity detection, vibration intensity detection, carrying position recognition, context awareness, and so forth.

The idea behind the machine learning core is to use the accelerometer, temperature, and Qvar data to compute a set of statistical parameters selectable by the user (such as mean, variance, energy, peak, zero-crossing, and so forth) in a defined time window. In addition to the sensor input data, some filtered inputs can be defined by applying some configurable filters available in the device.

The machine learning core parameters are called “features” and can be used as input for a configurable decision tree that can be stored in the device.

The decision tree that can be stored in the IIS2DULPX is a binary tree composed of a series of nodes. In each node, a statistical parameter (feature) is evaluated against a threshold to establish the evolution in the next node. When a leaf (one of the last nodes of the tree) is reached, the decision tree generates a result that is readable through a dedicated device register.

**Figure 2. Machine learning core in the IIS2DULPX**



The machine learning core output data rate can be configured among one of the five available rates from 12.5 Hz to 200 Hz. The bits MLC\_ODR in the embedded functions register MLC\_ODR (3Ah) allow selecting one of the five available rates as shown in the following table.

**Table 1. Machine learning core output data rates**

MLC_ODR bits in MLC_ODR (3Ah)	Machine learning core output data rate
000	12.5 Hz
001	25 Hz (default)
010	50 Hz
011	100 Hz
100	200 Hz

In order to implement the machine learning processing capability of the IIS2DULPX, it is necessary to use a “supervised learning” approach that consists of:

- Identifying some classes to be recognized
- Collecting multiple data logs for each class
- Performing some data analysis from the collected logs to learn a generic rule, which allows mapping inputs (data logs) to outputs (classes to be recognized)

In an activity recognition algorithm, for instance, the classes to be recognized might be: stationary, walking, jogging, biking, driving, and so forth. Multiple data logs have to be acquired for every class, for example multiple people performing the same activity.

The analysis on the collected data logs has the purpose of:

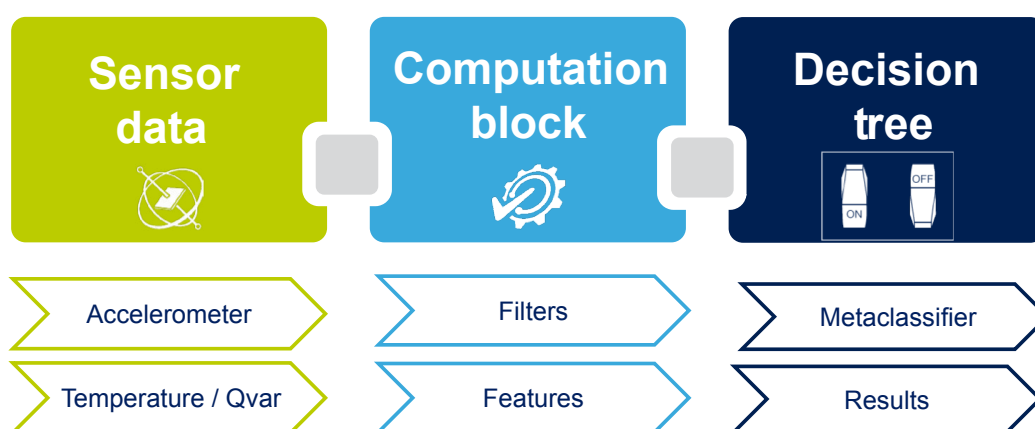
- Defining the features to be used to correctly classify the different classes
- Defining the filters to be applied to the input data to improve the performance using the selected features
- Generating a dedicated decision tree able to recognize one of the different classes (mapping inputs to outputs)

Once a decision tree has been defined, a configuration for the device can be generated by the software tool provided by STMicroelectronics (described in [Section 2: Machine learning core tools](#)). The decision tree runs on the device, minimizing the power consumption.

Going deeper in detail in the machine learning core feature inside the IIS2DULPX, it can be thought of as three main blocks ([Figure 3](#)):

1. Sensor data
2. Computation block
3. Decision tree

**Figure 3. Machine learning core blocks**



The first block, called “Sensor data”, is composed of data coming from the accelerometer or temperature/Qvar sensor.

The machine learning core inputs defined in the first block are used in the second block, the “Computation block”, where filters and features can be applied. The features are statistical parameters computed from the input data (or from the filtered data) in a defined time window, selectable by the user.

The features computed in the computation block are used as input for the third block of the machine learning core. This block, called “Decision tree”, includes the binary tree that evaluates the statistical parameters computed from the input data. In the binary tree, these parameters are compared against certain thresholds to generate results (in the example of the activity recognition described above, the results were: stationary, walking, jogging, biking, and so forth). The decision tree results might also be filtered by an optional filter called “metaclassifier”. The machine learning core results are the decision tree results after the optional metaclassifier processing.

The machine learning core memory is organized in a “dynamic” or “modular” way, in order to maximize the number of computation blocks, which can be configured in the device (filters, features, and so forth). A dedicated tool has been designed to generate the configuration of the IIS2DULPX, in order to automatically manage memory usage. The tool is available in MEMS Studio and it is described later in [Section 2: Machine learning core tools](#).

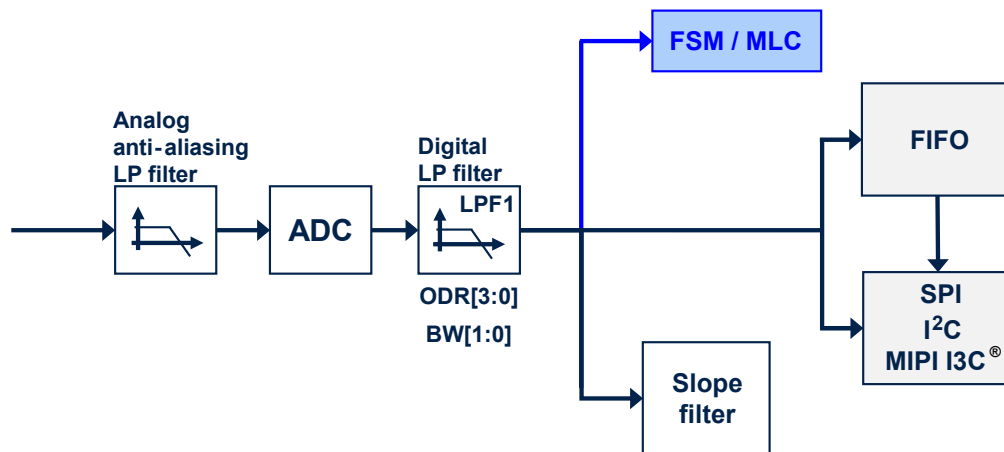
The following sections explain in detail the three main blocks of the machine learning core in the IIS2DULPX described in [Figure 3](#).

## 1.1 Inputs

The 3-axis data of the acceleration, together with temperature/Qvar data, can be used as input for the machine learning core. [Figure 4](#) shows the inputs of the machine learning core block in the accelerometer digital chain.

**Note:** Data as input to the MLC block has a higher resolution of data available in the output registers.

**Figure 4. MLC inputs (accelerometer)**



The rate of the input data must be equal to or higher than the machine learning core data rate configurable through the embedded functions register MLC\_ODR (3Ah), as described in [Table 1](#).

Example: In an activity recognition algorithm running at 25 Hz, the machine learning core ODR must be selected at 25 Hz, while the sensor ODRs must be equal to or higher than 25 Hz.

The machine learning core uses the following unit conventions:

- Accelerometer data in [g]
- Temperature data in [°C]
- Qvar data in [LSB]

When using Qvar data in [LSB], the sensitivity has to be set to 3C00h (which means 1 in half-precision floating-point format) in registers T\_AH\_QVAR\_SENSITIVITY\_L (B6h) and T\_AH\_QVAR\_SENSITIVITY\_H (B7h) in the embedded advanced features page 0.

When using temperature data, the default sensitivity is 19D1h (half-precision floating-point format), this value corresponds to 0.045°C/LSB with 12-bit resolution.

**Note:** The half-precision floating-point format is expressed as:

SEEEEEFFFFFFFFF (S: 1 sign bit; E: 5 exponent bits; F: 10 fraction bits).

During the MLC configuration, described in [Section 2: Machine learning core tools](#), the user just needs to set a sensitivity value in the GUI, which is translated in the register setting by the software.

To summarize the machine learning core inputs:

- Accelerometer data conversion factor is automatically handled by the device.
- Temperature data conversion factor is automatically handled by the device (through the default sensitivity setting).
- Qvar data conversion factor is not automatically handled by the device. A conversion factor must be set by the user in order to make the machine learning core work with the correct unit of measurement.

An additional input available for all sensor data (accelerometer and temperature/Qvar) is the norm. From the 3-axis data, the machine learning core (in the IIS2DULPX) internally computes the norm and the squared norm. These two additional signals can be used as inputs for machine learning processing.

The norm and the squared norm of the input data are computed with the following formulas:

$$V = \sqrt{x^2 + y^2 + z^2}$$

$$V^2 = x^2 + y^2 + z^2$$

Norm and squared norm data can be used in the decision trees in order to guarantee a high level of program customization for the user.

**Note:** *The data rate for MLC inputs is set through the MLC\_ODR bits. If the sensor ODR is higher than MLC\_ODR, MLC automatically decimates the input data (without any additional filtering).*

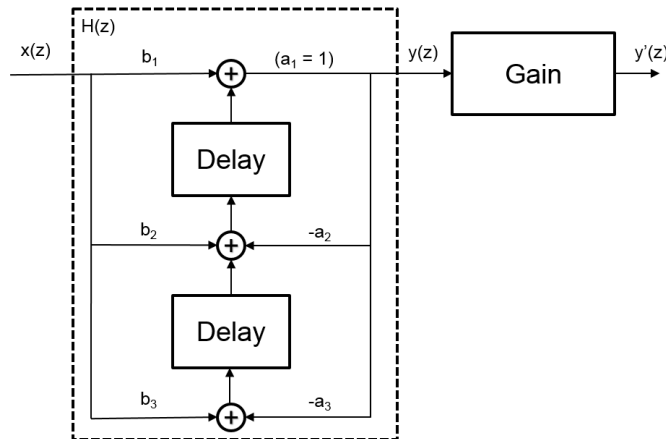
*It is recommended to select MLC\_ODR equal to the sensor ODR to avoid decimation of the MLC inputs. Selecting MLC\_ODR lower than the sensor ODR is also possible, but the different frequency response could lower the accuracy of the MLC solution.*

## 1.2 Filters

The input data seen in the previous section can be filtered by different types of filters available in the machine learning core logic. The basic element of the machine learning core filtering is a second order IIR filter, as shown in Figure 5.

**Note:** The filters available in the MLC block are independent of any other filter available on the device (the filters described in this section are illustrated in the MLC block of Figure 4).

**Figure 5. Filter basic element**



The transfer function of the generic IIR 2<sup>nd</sup> order filter is the following:

$$H(z) = \frac{b_1 + b_2 z^{-1} + b_3 z^{-2}}{1 + a_2 z^{-1} + a_3 z^{-2}}$$

From Figure 5, the outputs can be defined as:

$$y(z) = H(z) \cdot x(z)$$

$$y'(z) = y(z) \cdot \text{Gain}$$

To optimize memory usage, the machine learning core has default coefficients for the different types of filters (high-pass, bandpass, IIR1, IIR2). The machine learning core tool helps in configuring the filter by asking for the filter coefficients needed after selecting the type of filter. The following table shows the default values and the configurable values for the coefficients, depending on the filter type chosen. By setting different coefficients, it is possible to tune the filter for the specific application.

**Table 2. Filter coefficients**

Filter type / coefficients	b <sub>1</sub>	b <sub>2</sub>	b <sub>3</sub>	a <sub>2</sub>	a <sub>3</sub>	Gain
High-pass filter	0.5	-0.5	0	0	0	1
Bandpass filter	1	0	-1	Configurable	Configurable	Configurable
IIR1 filter	Configurable	Configurable	0	Configurable	0	1
IIR2 filter	Configurable	Configurable	Configurable	Configurable	Configurable	1

The filter coefficient values are expressed as half-precision floating-point format: S EEEEEFFFFFFFFFFF (S: 1 sign bit; E: 5 exponent bits; F: 10 fraction bits).

### 1.2.1 Filter coefficients

The IIR filter coefficients can be computed with different tools, including MATLAB®, Octave, and Python. In MATLAB®, for instance, the following function can be used to generate coefficients for a low-pass filter:

```
[b, a] = butter(N, f_cut / (ODR / 2), 'low')
```

Where:

- N is the order of the IIR filter (1 for IIR1, 2 for IIR2).
- f\_cut is the cutoff frequency [Hz] of the filter.
- ODR is the machine learning core data rate [Hz].
- 'low' (or 'high') is the type of filter to be implemented (low-pass or high-pass).

**Note:** *It is possible to configure a high-pass filter with the cutoff at half of the bandwidth (ODR/4) without inserting the coefficients. The machine learning core has some predefined coefficients for this configuration.*

The following function instead allows generating bandpass filter coefficients through MATLAB®:

```
[b, a] = butter(1, [f1 f2] / (ODR / 2), 'bandpass')
```

**Note:** *Since only a<sub>2</sub>, a<sub>3</sub> and gain are configurable for a bandpass filter, the b vector should be normalized by setting gain = b(1). Bandpass filters are generated as first-order filters in MATLAB® and Python.*

Example:

b = [0.2929 0 -0.2929]; a = [1.0 -0.5858 0.4142];

can be written as b = [1 0 -1] and gain = 0.2929.

So, the bandpass filter coefficients are:

a<sub>2</sub> = -0.5858; a<sub>3</sub> = 0.4142; gain = 0.2929.

Table 3 shows some examples of filter coefficients (most of them considering an ODR of 25 Hz).

When designing high-pass and bandpass IIR filters, the stability of the filters in half-precision floating-point must be considered, since the resolution loss can cause some divergence in the signal if the filters are not very stable.

It is recommended using first-order IIR filters when the cutoff frequency (normalized) is below 0.02 [2\*f<sub>cutoff</sub>/ODR] or increasing the cutoff frequency.

**Table 3. Examples of filter coefficients**

Filter type / coefficients	b <sub>1</sub>	b <sub>2</sub>	b <sub>3</sub>	a <sub>2</sub>	a <sub>3</sub>	Gain
High-pass IIR1, f <sub>cut</sub> = 1 Hz, ODR = 25 Hz	0.8877	-0.8877	-	-0.776	-	1
High-pass IIR1, f <sub>cut</sub> = 2 Hz, ODR = 25 Hz	0.796	-0.796	-	-0.5913	-	1
High-pass IIR1, f <sub>cut</sub> = 5 Hz, ODR = 25 Hz	0.579	-0.579	-	-0.1583	-	1
High-pass IIR1, f <sub>cut</sub> = 10 Hz, ODR = 25 Hz	0.2452	-0.2452	-	0.51	-	1
High-pass IIR2, f <sub>cut</sub> = 1 Hz, ODR = 25 Hz	0.837	-1.674	0.837	-1.647	0.7007	1
High-pass IIR2, f <sub>cut</sub> = 2 Hz, ODR = 25 Hz	0.6997	-1.399	0.6997	-1.308	0.4917	1
High-pass IIR2, f <sub>cut</sub> = 5 Hz, ODR = 25 Hz	0.3914	-0.7827	0.3914	-0.3696	0.1958	1
High-pass IIR2, f <sub>cut</sub> = 10 Hz, ODR = 25 Hz	0.06744	-0.1349	0.06744	1.143	0.4128	1

Filter type / coefficients	$b_1$	$b_2$	$b_3$	$a_2$	$a_3$	Gain
Low-pass IIR1, $f_{\text{cut}} = 1$ Hz, ODR = 25 Hz	0.1122	0.1122	-	-0.776	-	1
Low-pass IIR1, $f_{\text{cut}} = 2$ Hz, ODR = 25 Hz	0.2043	0.2043	-	-0.5913	-	1
Low-pass IIR1, $f_{\text{cut}} = 5$ Hz, ODR = 25 Hz	0.421	0.421	-	-0.1583	-	1
Low-pass IIR1, $f_{\text{cut}} = 10$ Hz, ODR = 25 Hz	0.755	0.755	-	0.51	-	1
Low-pass IIR2, $f_{\text{cut}} = 1$ Hz, ODR = 25 Hz	0.01336	0.02672	0.01336	-1.647	0.7007	1
Low-pass IIR2, $f_{\text{cut}} = 2$ Hz, ODR = 25 Hz	0.04614	0.0923	0.04614	-1.308	0.4917	1
Low-pass IIR2, $f_{\text{cut}} = 5$ Hz, ODR = 25 Hz	0.2065	0.413	0.2065	-0.3696	0.1958	1
Low-pass IIR2, $f_{\text{cut}} = 10$ Hz, ODR = 25 Hz	0.639	1.278	0.639	1.143	0.4128	1
Bandpass IIR2, $f_1 = 1.5$ Hz, $f_2 = 5$ Hz, ODR = 25 Hz	1	0	-1	-1.029	0.36	0.32
Bandpass IIR2, $f_1 = 0.2$ Hz, $f_2 = 1$ Hz, ODR = 100 Hz	1	0	-1	-1.95	0.951	0.02452



## 1.3 Features

The features are the statistical parameters computed from the machine learning core inputs. The machine learning core inputs that can be used for features computation are:

- The sensor input data, which includes
  - Sensor data from the X, Y, Z axes (for example, Acc\_X, Acc\_Y, Acc\_Z)
  - Sensor data from the temperature sensor /Qvar
  - Norm and squared norm signals of sensor data (Acc\_V, Acc\_V2)
- The filtered data (for example, high-pass on Acc\_Z, bandpass on Acc\_V2, and so forth)

All the standard features are computed within a defined time window, which is also called “window length” since it is expressed as the number of samples. The size of the window has to be determined by the user and is very important for the machine learning processing, since all the statistical parameters in the decision tree are evaluated in this time window. It is not a moving window, features are computed just once for every WL sample (where WL is the size of the window).

The window length can have values from 1 to 255 samples. The choice of the window length value depends on the MLC data rate (MLC\_ODR bits in the embedded functions register MLC\_ODR (3Ah)), which introduces a latency for the generation of the machine learning core result, and in the specific application or algorithm. In an activity recognition algorithm for instance, it can be decided to compute the features every 2 or 3 seconds, which means that considering sensors running at 25 Hz, the window length should be around 50 or 75 samples respectively.

Besides the standard features, the machine learning core provides the recursive features, which are computed at every sample and are evaluated by the decision trees once for every WL sample analogously to the standard features. For more details, refer to [Section 1.3.13: Recursive features](#).

Some of the features in the machine learning core require some additional parameters for the evaluation (for example, an additional threshold). The following table shows all the features available in the machine learning core including additional parameters.

**Note:** *The maximum number of features that can be configured in the MLC is 31. Feature values are limited to the range  $\pm 65504$ .*

**Table 4. Features**

Feature	Additional parameter
MEAN	-
VARIANCE	-
ENERGY	-
PEAK-TO-PEAK	-
ZERO-CROSSING	Threshold
POSITIVE ZERO-CROSSING	Threshold
NEGATIVE ZERO-CROSSING	Threshold
PEAK DETECTOR	Threshold
POSITIVE PEAK DETECTOR	Threshold
NEGATIVE PEAK DETECTOR	Threshold
MINIMUM	-
MAXIMUM	-
RECURSIVE MEAN	$b_1, b_2, a_2$
RECURSIVE RMS	$b_1, b_2, a_2$
RECURSIVE VARIANCE	$b_1, b_2, a_2$
RECURSIVE MAXIMUM	ths, $c_{start}$
RECURSIVE MINIMUM	ths, $c_{start}$
RECURSIVE PEAK-TO-PEAK	ths, $c_{start}$

### 1.3.1 Mean

The feature “*Mean*” computes the average of the selected input ( $I$ ) in the defined time window ( $WL$ ) with the following formula:

$$Mean = \frac{1}{WL} \sum_{k=0}^{WL-1} I_k$$

### 1.3.2 Variance

The feature “*Variance*” computes the variance of the selected input ( $I$ ) in the defined time window ( $WL$ ) with the following formula:

$$Variance = \left( \frac{\sum_{k=0}^{WL-1} I_k^2}{WL} \right) - \left( \frac{\sum_{k=0}^{WL-1} I_k}{WL} \right)^2$$

### 1.3.3 Energy

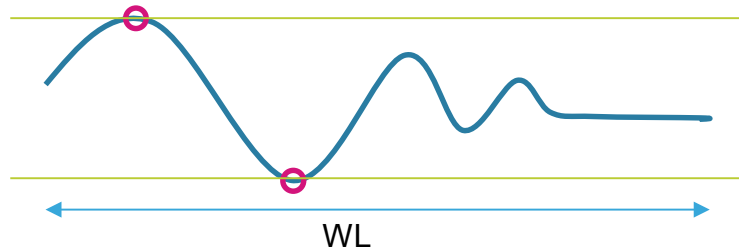
The feature “*Energy*” computes the energy of the selected input ( $I$ ) in the defined time window ( $WL$ ) with the following formula:

$$Energy = \sum_{k=0}^{WL-1} I_k^2$$

### 1.3.4 Peak-to-peak

The feature “*Peak-to-peak*” computes the maximum peak-to-peak value of the selected input in the defined time window.

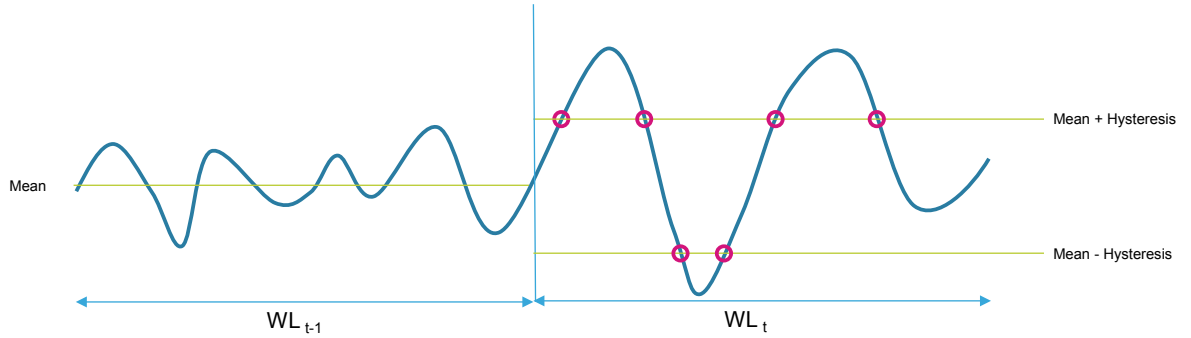
Figure 6. Peak-to-peak



### 1.3.5 Zero-crossing

The feature “Zero-crossing” computes the number of times the selected input crosses a certain threshold. This internal threshold is defined as the sum between the average value computed in the previous window (feature “Mean”) and hysteresis defined by the user.

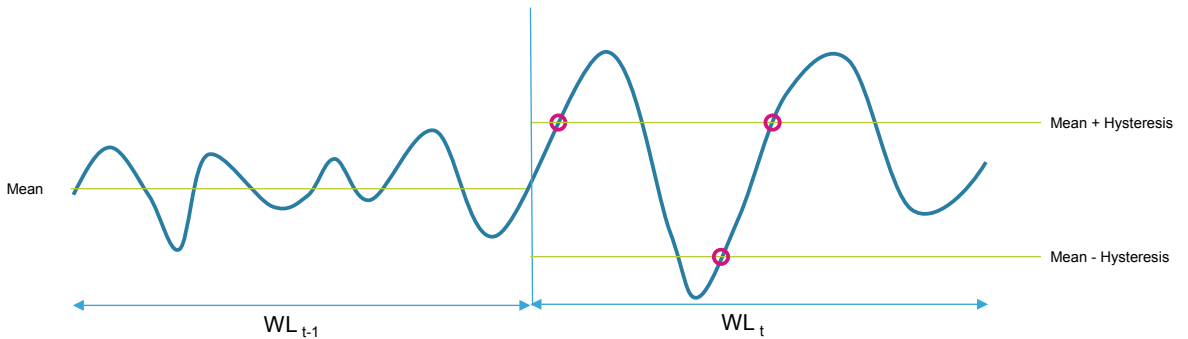
Figure 7. Zero-crossing



### 1.3.6 Positive zero-crossing

The feature “Positive zero-crossing” computes the number of times the selected input crosses a certain threshold. This internal threshold is defined as the sum between the average value computed in the previous window (feature “Mean”) and hysteresis defined by the user. Only the transitions with positive slopes are considered for this feature.

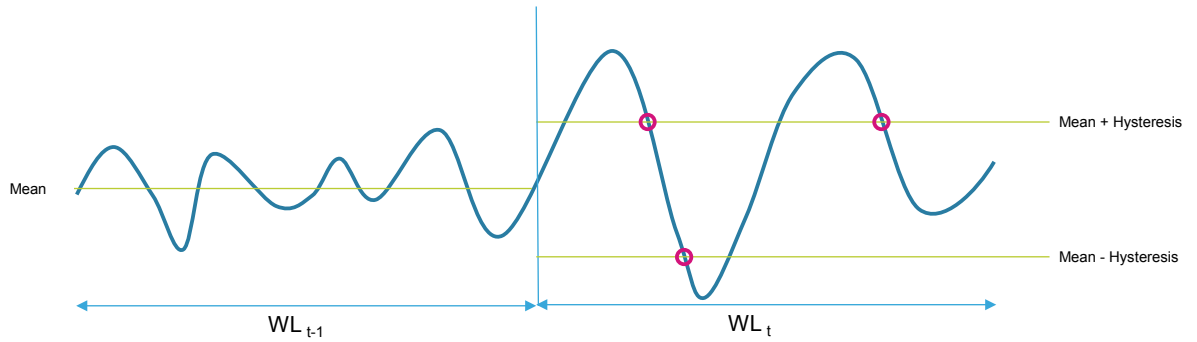
Figure 8. Positive zero-crossing



### 1.3.7 Negative zero-crossing

The feature “*Negative zero-crossing*” computes the number of times the selected input crosses a certain threshold. This internal threshold is defined as the sum between the average value computed in the previous window (feature “Mean”) and hysteresis defined by the user. Only the transitions with negative slopes are considered for this feature.

Figure 9. Negative zero-crossing



### 1.3.8 Peak detector

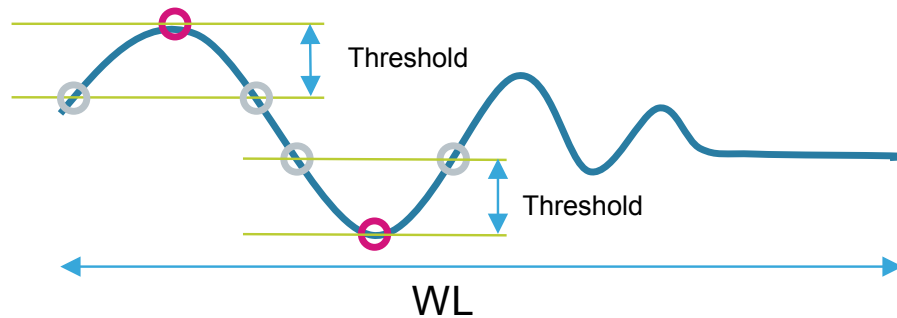
The feature “*Peak detector*” counts the number of peaks (positive and negative) of the selected input in the defined time window.

A threshold has to be defined by the user for this feature, and a buffer of three values is considered for the evaluation. If the second value of the three values buffer is higher (or lower) than the other two values of a selected threshold, the number of peaks is increased.

The buffer of three values considered for the computation of this feature is a moving buffer inside the time window.

The following figure shows an example of the computation of this feature, where two peaks (one positive and negative) have been detected in the time window.

Figure 10. Peak detector



### 1.3.9 Positive peak detector

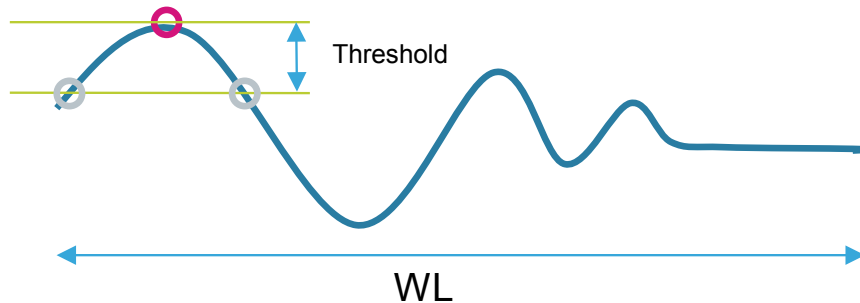
The feature “*Positive peak detector*” counts the number of positive peaks of the selected input in the defined time window.

A threshold has to be defined by the user for this feature, and a buffer of three values is considered for the evaluation. If the second value of the three values buffer is higher than the other two values of a selected threshold, the number of peaks is increased.

The buffer of three values considered for the computation of this feature is a moving buffer inside the time window.

The following figure shows an example of the computation of this feature, where just one peak (positive) has been detected in the time window.

Figure 11. Positive peak detector



### 1.3.10 Negative peak detector

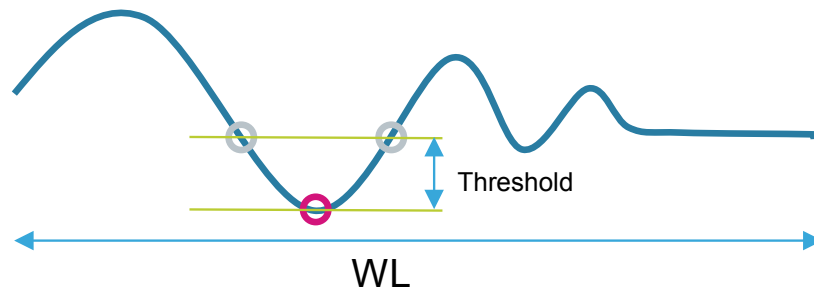
The feature “*Negative peak detector*” counts the number of negative peaks of the selected input in the defined time window.

A threshold has to be defined by the user for this feature, and a buffer of three values is considered for the evaluation. If the second value of the three values buffer is lower than the other two values of a selected threshold, the number of peaks is increased.

The buffer of three values considered for the computation of this feature is a moving buffer inside the time window.

The following figure shows an example of the computation of this feature, where just one peak (negative) has been detected in the time window.

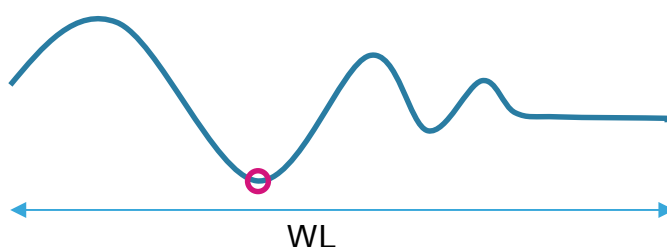
Figure 12. Negative peak detector



### 1.3.11 Minimum

The feature “*Minimum*” computes the minimum value of the selected input in the defined time window. The following figure shows an example of minimum in the time window.

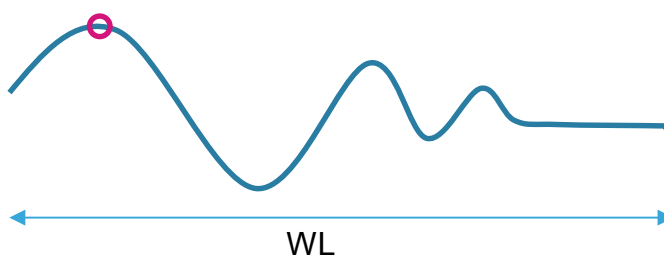
Figure 13. Minimum



### 1.3.12 Maximum

The feature “*Maximum*” computes the maximum value of the selected input in the defined time window. The following figure shows an example of maximum in the time window.

Figure 14. Maximum



### 1.3.13

#### Recursive features

Besides the standard features previously described, the IIS2DULPX has a set of advanced features called "recursive".

Recursive algorithms are widely used in real-time embedded systems for the low computational complexity and minimum storage needs.

In the MLC, recursive features overcome some of the limitations associated with the features computed every window length (nonoverlapped window), allowing better detection of short events and simplifying the coexistence of different algorithms.

Compared to windowed features, the recursive features:

- Provide a valid value every MLC\_ODR
- Allow tuning the "memory time" of the feature using weighting

Recursive features in the MLC are divided in two groups:

- First-order mean, RMS, variance
- Maximum, minimum, peak-to-peak

#### 1.3.13.1

##### Recursive mean, RMS, variance

Recursive features on the mean, RMS, and variance are based on the IIR low-pass filter. The parameters of these features are  $b_1$ ,  $b_2$ , and  $a_2$ . Example:  $b_1 = 1$ ;  $b_2 = 0.25$ ;  $a_2 = 0.75$

The following table shows the three formulas of the first group of recursive features.

**Table 5. First group of recursive features**

Recursive feature	Formula
Recursive mean	$IIR_{LP}[x_i]$
Recursive variance	$IIR_{LP}[x_i^2] - IIR_{LP}^2[x_i]$
Recursive RMS	$\sqrt{IIR_{LP}[x_i^2]}$

### 1.3.13.2 Recursive maximum, minimum, peak-to-peak

Recursive features on maximum, minimum, peak-to-peak are based on a concept similar to the envelope detector:

- Maximum/minimum value equal to input value when higher/lower than current values
- Otherwise, maximum/minimum value starts to decay with a configurable coefficient

The following table shows the three formulas of the second group of recursive features.

The configurable parameters for these features are:

- Threshold, which sets a "rest value" (it should be set as the average value of the input signal)
- $C_{start}$ , which is the initial value of the decay coefficient and must be set between 0 and 1 (lower values mean faster updates)

**Table 6. Second group of recursive features**

Recursive feature	Formula	
Recursive maximum ( $Max_i$ ) <sup>(1)</sup>	$Max_i = in_i$	if $in_i \geq Max_{i-1}$ $C_{max} = C_{start}$
	$Max_i = THS + (Max_{i-1} - THS) \cdot C_{max}$	if $in_i < Max_{i-1}$ $C_{max} = C_{start} C_{max}$
Recursive minimum ( $Min_i$ ) <sup>(2)</sup>	$Min_i = in_i$	if $in_i \leq Min_{i-1}$ $C_{min} = C_{start}$
	$Min_i = THS - (THS - Min_{i-1}) \cdot C_{min}$	if $in_i > Min_{i-1}$ $C_{min} = C_{start} C_{min}$
Recursive peak-to-peak	$pk2pk_i = Max_i - Min_i$	

1. Recursive maximum ( $Max_i$ ) cannot be lower than the threshold (THS).

2. Recursive minimum ( $Min_i$ ) cannot be higher than the threshold (THS).

### 1.3.14 Selection of features

The selection of the features to be used for the machine learning core configuration depends on the specific application.

Considering that the use of too many features may lead to overfitting and too large decision trees, it is recommended to start first by selecting the four most common features:

- Mean
- Variance
- Energy
- Peak-to-peak

If the performance is not good with these features, and in order to improve the accuracy, other features can be considered to better separate the classes.

Input data for the features calculation and axes (for example, X, Y, Z, V) have to be chosen according to the specific application as well. Some classes are strongly correlated with sensor orientation (that is, applications which use the device carry position), so it is better to use individual axis (X, Y, Z). Other classes (like walking) are independent of orientation, so it is better to use the norm (V or V2).

Sometimes the basic features (mean, variance, energy, and so forth) might not help in distinguishing the dominating frequency, so embedded digital filters can be enabled to select a specific region of frequency. Using the filtered signal, certain classes may be distinguished more precisely. For instance, if the user is walking, the typical signal is around 1-2 Hz, while if the user is jogging, the typical signal is around 2.5-4 Hz.

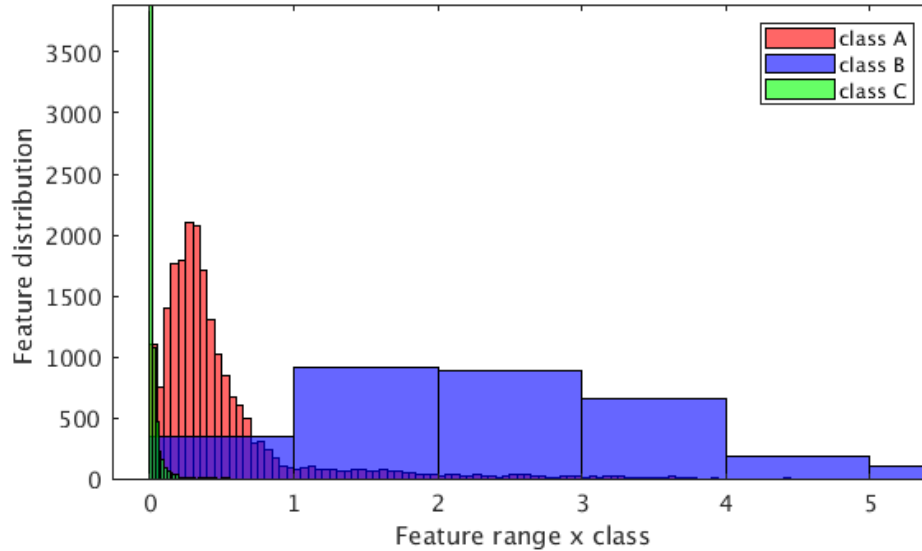
The information contribution from a single feature can be evaluated by a measure of how much different classes are separated (from each other). This analysis can be done in a graphical way, by plotting 1D/2D graphs as described in the following examples.



### 1.3.14.1 Histogram of a single feature (1D plot)

The following figure shows a histogram of the computed values of a single feature for three different classes. These three classes are reasonably separated, so an important level of information is expected with this feature. For reference, the computed classification accuracy with this single feature is around 75%.

**Figure 15. Distribution of single feature for three different classes**



### 1.3.14.2 Visualization of two features (2D plot)

The following figure shows a 2D plot related to a 2-class classification problem with the selection of two features:

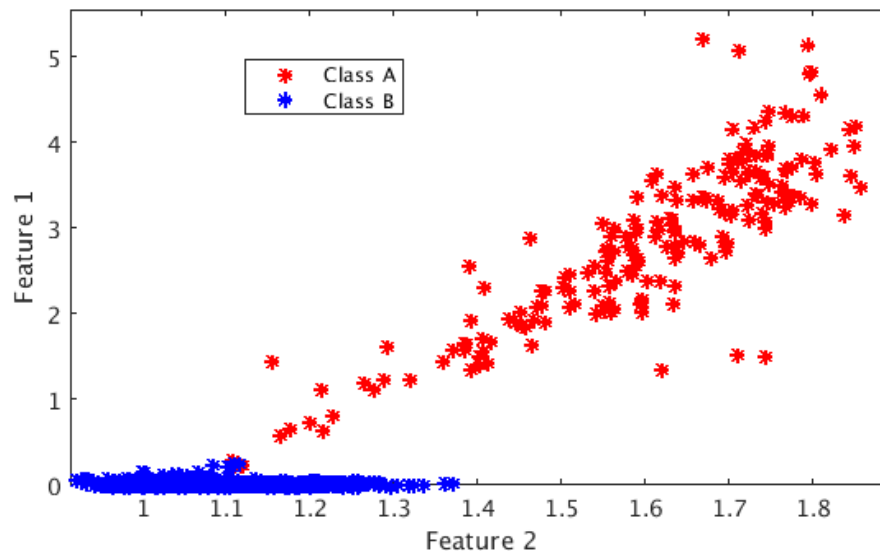
- Feature 1 on the graph vertical axis
- Feature 2 on the graph horizontal axis

In this case, the strict separation between the two classes is evident:

- Class A in red
- Class B in blue

A good information contribution can be obtained by combining the two features. For reference, the classification accuracy obtained with this example is more than 95%.

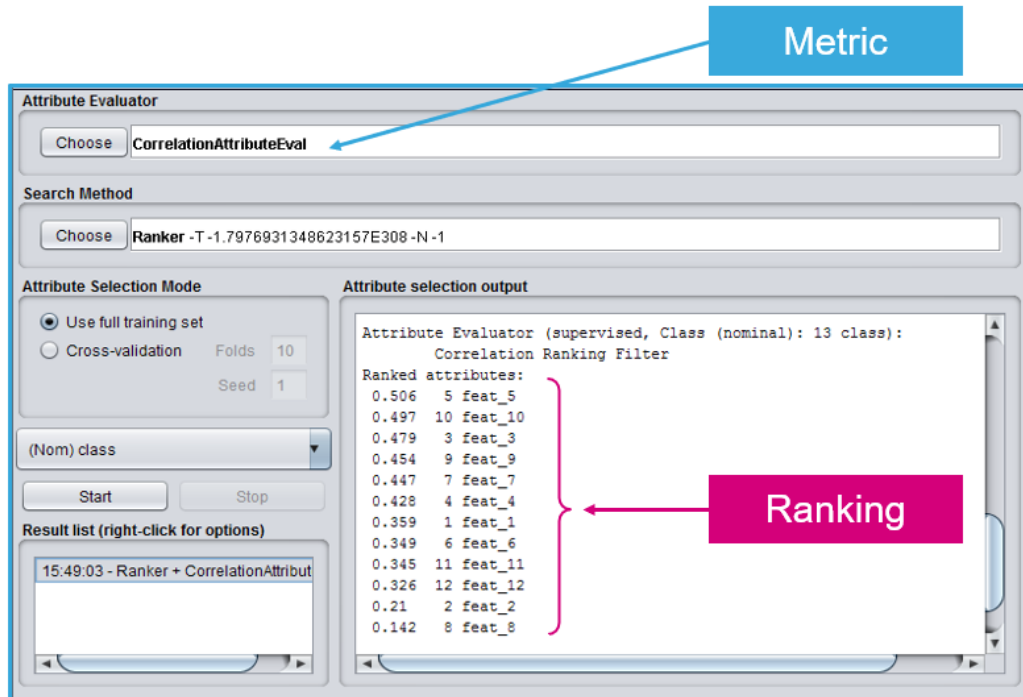
**Figure 16. Visualization of two features and two classes**



### 1.3.14.3 Ranking of features

Different machine learning tools offer automated methods to order features in terms of the information contribution. This form of output ranking is based on criteria/metrics such as correlation, information gain, probabilistic distance, entropy and more. An example is given by Weka, which automatically handles the calculations needed to generate optimal decision trees as indicated in the figure below.

Figure 17. Ranking from automated output tool



Note that different features could share the same information contribution. This can be evaluated again by visualizing the single feature or by checking the accuracy obtained with the subset of features taken one-by-one, and together, as explained in previous sections.

A final consideration can be done on the number of features which have been selected. In general, the higher the number of features selected:

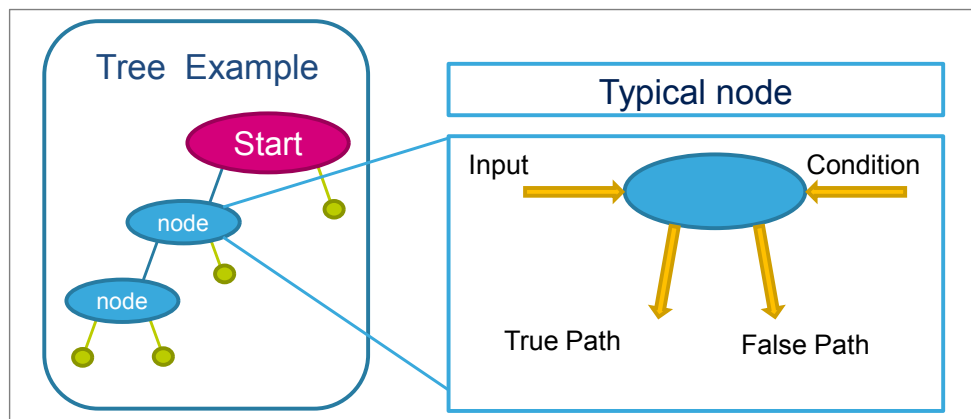
- The higher the risk of overfitting
- The larger the size of the resulting decision tree

## 1.4 Decision tree

The decision tree is the predictive model built from the training data, which can be stored in the IIS2DULPX. The training data are the data logs acquired for each class to be recognized (in the activity recognition example the classes might be stationary, walking, jogging, biking, driving, and so forth).

The outputs of the computation blocks described in the previous sections are the inputs of the decision tree. Each node of the decision tree contains a condition, where a feature is evaluated against a certain threshold. If the condition is true, the next node in the true path is evaluated. If the condition is false, the next node in the false path is evaluated. The status of the decision tree evolves node by node until a result is found. The result of the decision tree is one of the classes defined at the beginning of the data collection.

Figure 18. Decision tree node



The decision tree generates a new result at the end of every time window (the parameter "window length" set by the user for the computation of the features). Window length is expressed as a number of samples. The time window can be obtained by dividing the number of samples by the data rate chosen for MLC (MLC\_ODR):

Time window = window length / MLC\_ODR

For instance, selecting 100 samples for the window length and 100 Hz for the MLC data rate, the obtained time window is:

Time window = 100 samples / 100 Hz = 1 second

The decision tree results can also be filtered by an additional (optional) filter called "metaclassifier", which is described in [Section 1.5: Metaclassifier](#).

The machine learning core results (decision tree results filtered or not filtered by the metaclassifier) are accessible through dedicated registers in the embedded functions registers (as shown in [Table 7](#)). These registers can be continuously read (polled) to check the decision tree outputs. The register MLC\_STATUS\_MAINPAGE (36h) or the embedded functions register MLC\_STATUS (15h) contains the interrupt status bits of the four possible decision trees. These bits are automatically set to 1 when the corresponding decision tree value changes. Furthermore, the interrupt status signal generated using these bits can also be driven to the INT1 pin by setting the MLC\_INT1 (0Dh) embedded functions register, or to the INT2 pin by setting the MLC\_INT2 (11h) embedded functions register ([Table 8](#)). Using the interrupt signals, an MCU performing other tasks or sleeping (to save power), can be awakened when the machine learning core result has changed.

The machine learning core interrupt signal is pulsed by default. The duration of the pulse is equal to 1 / MAX\_RATE seconds, where MAX\_RATE denotes the maximum rate of the enabled embedded functions.

The machine learning core interrupt signal can also be set latched through the bit EMB\_FUNC\_LIR in the embedded functions register PAGE\_RW (17h).

**Table 7. Decision tree results**

Register	Content
MLC1_SRC (70h)	Result of decision tree 1
MLC2_SRC (71h)	Result of decision tree 2
MLC3_SRC (72h)	Result of decision tree 3
MLC4_SRC (73h)	Result of decision tree 4

**Table 8. Decision tree interrupts**

Register	Content
MLC_STATUS_MAINPAGE (36h)	Contains interrupt status bits for changes in the decision tree result
MLC_STATUS (15h)	Contains interrupt status bits for changes in the decision tree result
MLC_INT1 (0Dh)	Allows routing the interrupt status bits for decision trees to INT1 pin <sup>(1)</sup>
MLC_INT2 (11h)	Allows routing the interrupt status bits for decision trees to INT2 pin <sup>(2)</sup>

1. Routing is established if the INT1\_EMB\_FUNC bit of MD1\_CFG (1Fh) is set to 1.

2. Routing is established if the INT2\_EMB\_FUNC bit of MD2\_CFG (20h) is set to 1.

#### 1.4.1 Decision tree limitations in the IIS2DULPX

The IIS2DULPX has limited resources for the machine learning core in terms of number of decision trees, size of the trees, and number of decision tree results.

Up to 4 different decision trees can be stored in the IIS2DULPX, but the sum of the number of nodes for all the decision trees must not exceed 128 (\*). Every decision tree can have up to 16 results in the IIS2DULPX.

(\*) This number might also be limited by the number of features and filters configured. In general, if using few filters and features, there is no further limitation on the size of the decision tree. However, when using many filters and features, the maximum number of nodes for the decision trees is slightly limited. The tool informs the user of the available nodes for the decision tree.

The table below summarizes the limitations of the IIS2DULPX.

**Table 9. Decision tree limitations in the IIS2DULPX**

	IIS2DULPX
Maximum number of decision trees	4
Maximum number of nodes (total number for all the decision trees)	128 (*)
Maximum number of results per decision tree	16

**Note:** When using multiple decision trees, all the parameters described in the previous sections (inputs, filters, features computed in the time window, the time window itself, and also the data rates) are common for all the decision trees.

## 1.5 Metaclassifier

A metaclassifier is a filter on the outputs of the decision tree. The metaclassifier uses some internal counters in order to filter the decision tree outputs.

Decision tree outputs can be divided in subgroups (for example, similar classes can be managed in the same subgroup). An internal counter is available for all the subgroups of the decision tree outputs. The counter for the specific subgroup is increased when the result of the decision tree is one of the classes in the subgroup and it is decreased otherwise. When the counter reaches a defined value, which is called “end counter” (set by the user), the output of the machine learning core is updated. Values allowed for end counters are from 0 to 14.

**Table 10. Metaclassifier example**

Decision tree result	A	A	A	B	A	B	B	B	A	B	B	B	A	A	A
Counter A (End counter = 3)	1	2	3	2	3	2	1	0	1	0	0	0	1	2	3
Counter B (End counter = 4)	0	0	0	1	0	1	2	3	2	3	4	4	3	2	1
Machine learning core result (including metaclassifier)	x	x	A	A	A	A	A	A	A	A	B	B	B	B	A

The previous table shows the effect of filtering the decision tree outputs through a metaclassifier. The first line of the table contains the outputs of the decision tree before the metaclassifier. Counter A and counter B are the internal counters for the two decision tree results (“A” and “B”). In the activity recognition example, the result “A” might be walking and the result “B” jogging. When the internal counter “A” reaches the value 3 (which is the end counter for counter “A”), there is a transition to result “A”. When the internal counter “B” reaches value 4, there is a transition to result “B”.

The purpose of the metaclassifier is to reduce the false positives, in order to avoid generating an output which is still not stable, and to reduce the transitions on the decision tree result.

### 1.5.1 Metaclassifier limitations in the IIS2DULPX

The metaclassifier has a limited number of subgroups, 4 subgroups can be used in the IIS2DULPX. Similar classes may need to be grouped in the same subgroup to use the metaclassifier.

**Table 11. Metaclassifier limitations in the IIS2DULPX**

	IIS2DULPX
Maximum number of results per decision tree	16
Result subgroups for metaclassifier per decision tree	4

*Note:* Multiple metaclassifiers can be configured. One metaclassifier is available for any decision tree configured in the machine learning core.

## 1.6 Finite state machine interface

The IIS2DULPX also provides a configurable finite state machine that is suitable for deductive algorithms and in particular gesture recognition.

Finite state machines and decision trees can be combined to work together in order to enhance the accuracy of motion detection.

The decision tree results generated by the machine learning core can be checked by the finite state machine available in the IIS2DULPX: this is possible through the condition CHKDT (described in the application note AN6125 IIS2DULPX: finite state machine). MLC filters and features can also be used by the finite state machines: the identifiers for filters and features are available in the configuration file (.ucf) generated by MEMS Studio (see Figure 19).

By default, the FSM programs are executed before the MLC algorithms. However, it is possible to change this order through the bit MLC\_BEFORE\_FSM\_EN in register EMB\_FUNC\_EN\_A (04h).

*Note:*

*The MLC and FSM share some part of the memory. When using the MLC and FSM together, it is important to properly combine the two configurations by using the merge tool integrated in MEMS Studio. You can find it in the [Advanced Features] [Merge MLC + FSM] tab of the MEMS Studio main window.*

## 1.7

### MLC data in FIFO

The IIS2DULPX allows storing MLC data in FIFO:

- **MLC results** can be stored in FIFO every time that the output of any decision tree changes. One data word is stored containing the MLCx\_SRC register corresponding to the decision tree whose output has changed and the decision tree index from 0 to 3. The tag is 1Ah.
- **MLC filters** can be stored in FIFO at every sample processed by the MLC (MLC\_ODR). One data word is stored in FIFO for each axis (three words if the MLC filter is configured for XYZ). The tag is 1Bh.
- **MLC standard features** can be stored in FIFO at every time window (window length set by the user). One data word is stored in FIFO and the tag is 1Ch.
- **MLC recursive features** can be stored in FIFO at every sample processed by the MLC (MLC\_ODR). Three data words are stored in FIFO and the tag is 1Ch.

Table 12 shows each FIFO entry of the different cases. Identifiers for filters and features are available in the configuration file (.ucf) generated by MEMS Studio (see Figure 19).

Table 12. Data in FIFO

	TAG	X_L	X_H	Y_L	Y_H	Z_L	Z_H
MLC result	1Ah	MLCx_SRC	Index of MLCx_SRC <sup>(1)</sup>	Timestamp			
MLC filter	1Bh	Value <sup>(2)</sup>		Filter identifier <sup>(3)</sup>		Reserved	
MLC feature	1Ch	Value <sup>(2)</sup>		Feature identifier <sup>(3)</sup>		Reserved	

1. MLCx\_SRC registers are indexed from 0 to 3 (for example, MLC1\_SRC is indexed as 0).
2. The value is represented as half-precision floating-point.
3. Filter and feature identifiers are indicated in the .ucf file.

Figure 19. Identifiers for filters and features

```
-- <MLC1_SRC>DT1,0='negative',4='positive'

-- FILTER_IIR1_ACC_X -> 023Ch
-- FILTER_IIR1_ACC_Y -> 023Eh
-- FILTER_IIR1_ACC_Z -> 0240h
-- F1_MEAN_on_ACC_X -> 0242h
-- F2_MEAN_on_ACC_Y -> 0244h
-- F3_MEAN_on_ACC_Z -> 0246h
```

The following table shows the global bits to enable batching of results and filters/features in FIFO.

Bit	Register	Result
MLC_FIFO_EN	EMB_FUNC_FIFO_EN (18h)	It enables batching machine learning core results in the FIFO buffer
MLC_FILTER_FEATURE_FIFO_EN	EMB_FUNC_FIFO_EN (18h)	It enables batching machine learning core filters and features in the FIFO buffer (Filters and features to be stored in FIFO can be specifically selected when generating the MLC configuration)

**Note:** Each single filter and feature has to be manually enabled during the MLC configuration with MEMS Studio.

## 2 Machine learning core tools

The machine learning core programmability in the device is allowed through a dedicated tool, available as an extension of MEMS Studio.

### 2.1 MEMS Studio

MEMS Studio is the graphical user interface for all the MEMS sensor demonstration boards available in the STMicroelectronics portfolio. It has the possibility to interact with a motherboard based on the STM32 microcontroller (professional MEMS tool), which enables the communication between the MEMS sensor and the PC GUI. MEMS Studio also has the possibility to run offline, without a motherboard connected to the PC.

Details of the professional MEMS tool board can be found on [www.st.com](http://www.st.com) at [STEVAL-MKI109D](#).

MEMS Studio is available in three software packages for the three operating systems supported (Windows, Linux, macOS).

MEMS Studio allows visualization of sensor outputs in both graphical and numerical format and allows the user to save or generally manage data coming from the device.

MEMS Studio allows access to the MEMS sensor registers, enabling fast prototyping of register setup and easy testing of the configuration directly on the device. It is possible to save the current register configuration in a text file (with .ucf extension) and load a configuration from an existing file. In this way, the sensor can be reprogrammed in a few seconds.

The machine learning core tool available in the MEMS Studio GUI abstracts the process of register configuration by automatically generating configuration files for the device. The user just needs to set some parameters in the GUI and by clicking a few buttons, the configuration file is already available. From these configuration files, the user can create his own library of configurations for the device.

Since the machine learning approach requires the collection of data logs, they can be acquired through the **[Sensor Evaluation] [Save to File]** tab of MEMS Studio (Figure 20). For the accelerometer, the checkbox **[Accelerometer]** allows saving data in [mg]. For the temperature, the checkbox **[Temperature]** allows saving data in [°C]. For the AH / Qvar, the checkbox **[AH\_Qvar [LSB]]** allows saving data in [LSB].

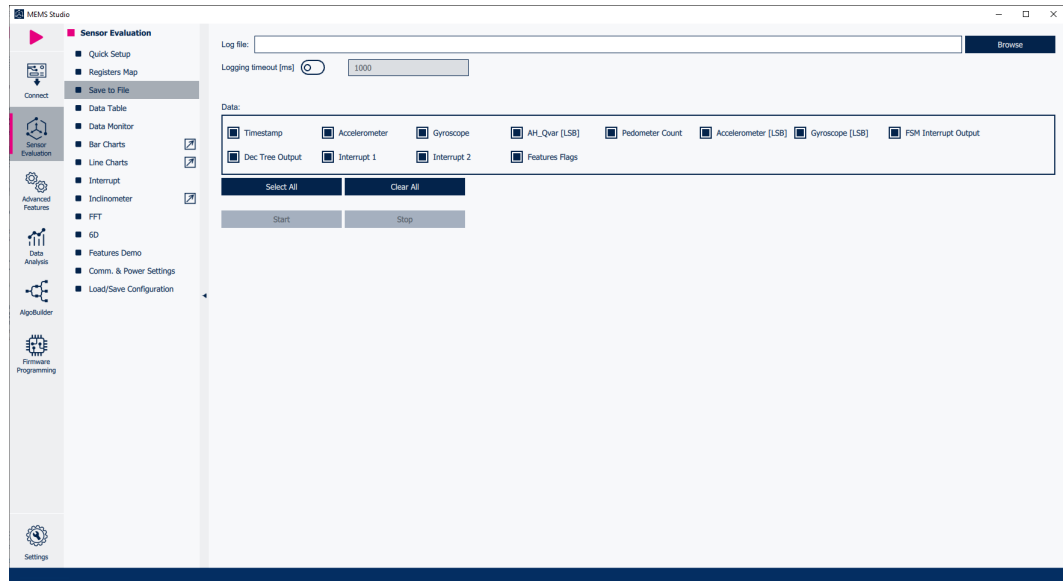
Note:

*When logging data, the **[Start]** and **[Stop]** buttons (in the **[Sensor Evaluation] [Save to File]** tab of MEMS Studio) must be used properly in order to avoid logging incorrect data at the beginning or at the end of the acquisition. For instance, when logging a data pattern for the class "walking", the user should start walking before pressing the button **[Start]** and stop walking after pressing the button **[Stop]**. It is important to select the correct ODR for data logging. If the final MLC ODR (for example, 25 Hz) is already defined, it is recommended to use the same ODR for data logging (ODR 25 Hz). If the MLC ODR is not defined, it is recommended to log the data at ODR 100 Hz (which is the maximum ODR for MLC), and then downsample the data if needed. Depending on the algorithm to be implemented, different data logs are needed (at least one per class to use the supervised machine learning approach). It is recommended to have different data logs for each class (for example, 30 data logs per class) in order to capture some diversity or variation, which can be expected in the final application (for example, different users, different tests, or different conditions).*

If using MEMS Studio offline (without connecting the motherboard to the PC), the user, who has already acquired the data logs, can directly upload them to generate a machine learning core configuration.

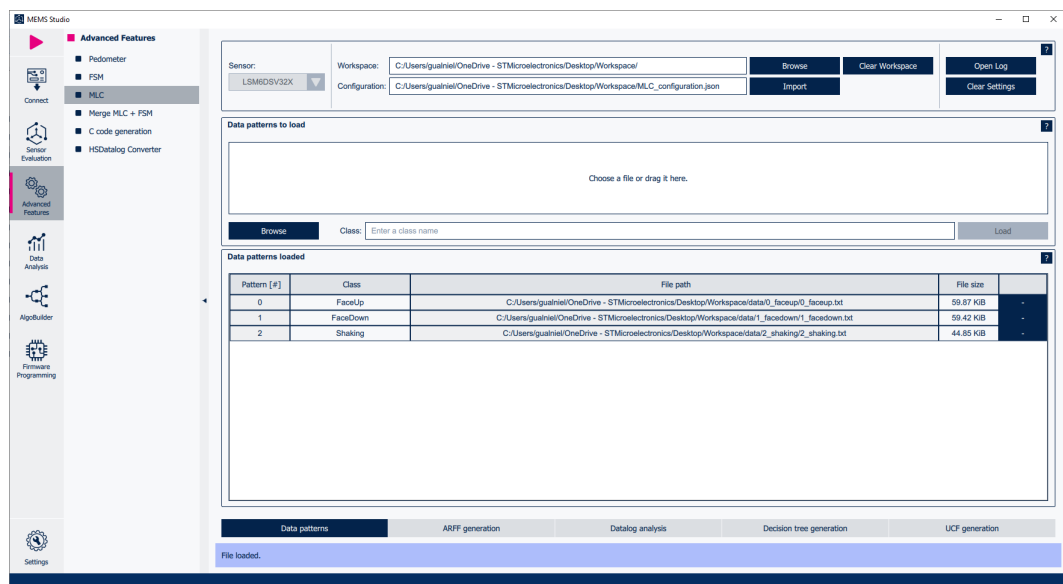


Figure 20. MEMS Studio



The collected data logs can then be loaded in the machine learning core tool of MEMS Studio, available in the **[Advanced Features] [MLC]** tab (Figure 21). An expected result must be assigned to each data pattern loaded (for instance, in the activity recognition algorithm, the results might be: still, walking, jogging, and so on). This assignment is also called "data labeling". The label has to be a set of characters including only letters and numbers (no special characters and no spaces). It is also possible to load a group of data patterns (by multiple selections in the folder where the files are located) and assign the label just once for all the files selected.

Figure 21. Machine learning core tool - data patterns



The unit of measurement for the data expected in the **[Data patterns]** tab of the machine learning core tool are:

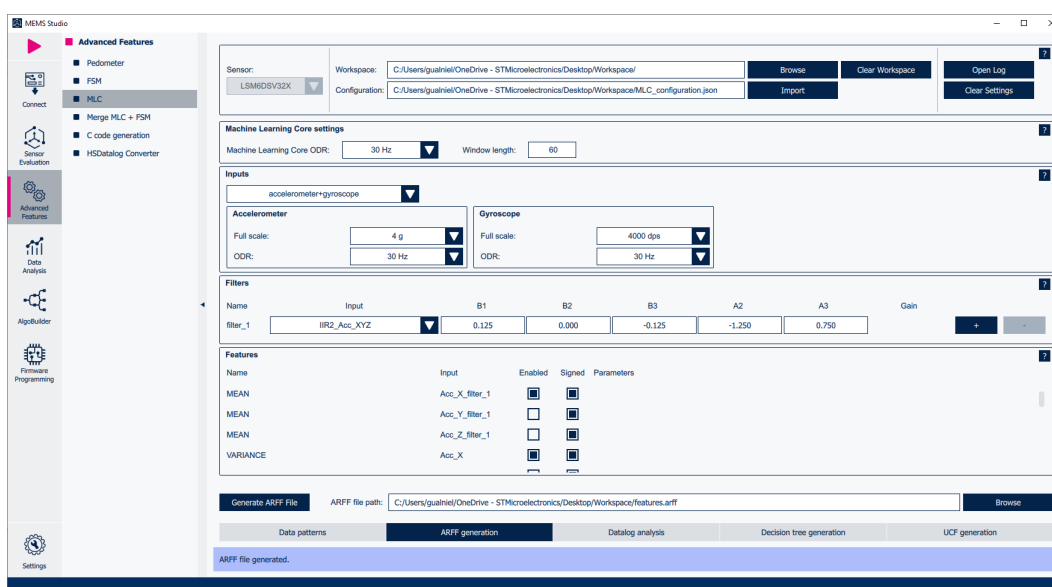
- [mg] (or alternatively [g]) for the accelerometer
- [°C] for the temperature
- [LSB] for the AH / Qvar

The conversion from [mg] to [g] for the accelerometer is automatically managed internally by the machine learning core tool, to allow the machine learning core logic to work with the correct data ([g]). The conversion for the temperature is automatically managed internally by the machine learning core tool, to allow the machine learning core logic to work with the correct data. For AH / Qvar data, the user is required to set the proper sensitivity.

In the configuration tab of the machine learning core tool (Figure 22), all the parameters of the machine learning core (such as ODR, full scales, window length, filters, features, metaclassifier) can be configured. The tool allows selecting multiple filters, which can be applied to the raw data, and multiple features to be computed from the input data or from the filtered data. The features computed are the attributes of the decision tree.

When the board is connected and the device already configured, the tool automatically suggests ODRs and full scales according to the current device configuration.

Figure 22. Machine learning core tool - configuration



The [ARFF generation] tab of the machine learning core tool generates an attribute-relation file (ARFF), which is the starting point for the decision tree generation process. The decision tree can be generated by different machine learning tools (Section 2.2).

Once the decision tree has been generated, it can be uploaded to the machine learning core tool in MEMS Studio to complete the generation of the register configuration for the IIS2DULPX.

MEMS Studio, by accessing the sensor registers, can read the status of the decision tree outputs, visualize them together with sensor data, and make it possible to log all the data (sensor outputs and decision tree outputs) together in the same text file.

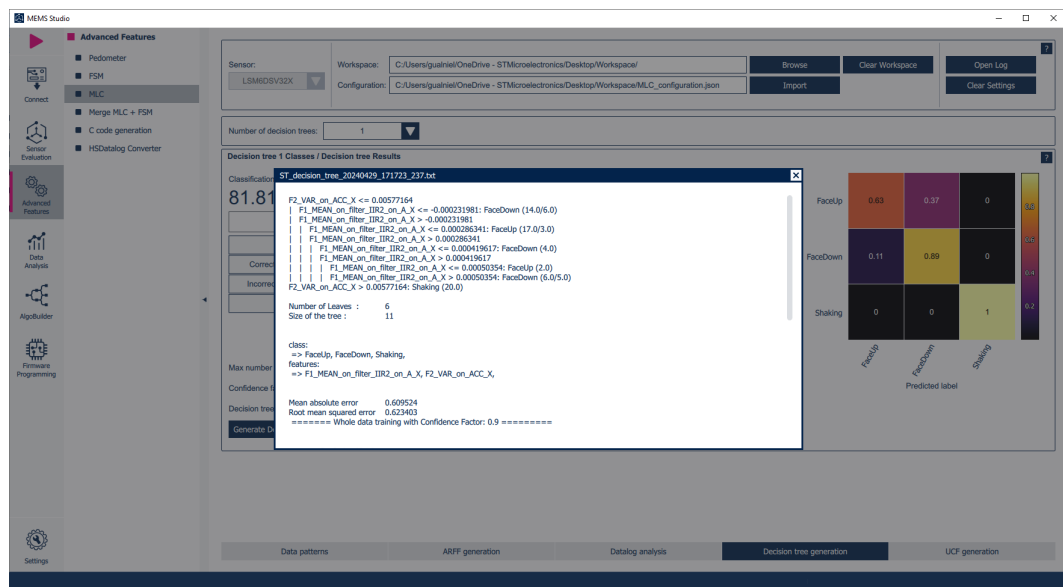
## 2.2 Decision tree generation

MEMS Studio (starting from version 1.1.0) is able to automatically generate the decision tree, as shown in the following figure.

Two parameters can be fine-tuned when starting the decision tree generation in MEMS Studio:

- The maximum number of nodes, which can be set to make sure the generated tree can fit in the MLC configuration
- The confidence factor, for controlling decision tree pruning (by lowering this number, overfitting can be reduced)

Figure 23. Decision tree generation in MEMS Studio



Besides MEMS Studio, there are other external machine learning tools able to generate decision trees and some of them are supported by MEMS Studio.

One of the most frequently used tools is Weka, software developed by the University of Waikato (more details about this software can be found in [Appendix A](#)). Other alternative tools are: RapidMiner ([Appendix B](#)), MATLAB® ([Appendix C](#)), Python ([Appendix D](#)).

Weka is able to generate a decision tree starting from an attribute-relation file (ARFF). Through Weka it is possible to evaluate which attributes are good for the decision tree, and different decision tree configurations can be implemented by changing all the parameters available in Weka. [Figure 24](#) and [Figure 25](#) show the [Preprocess] and [Classify] tabs of Weka, which allow evaluating the attributes and generating the decision tree.

Figure 24. Weka preprocess

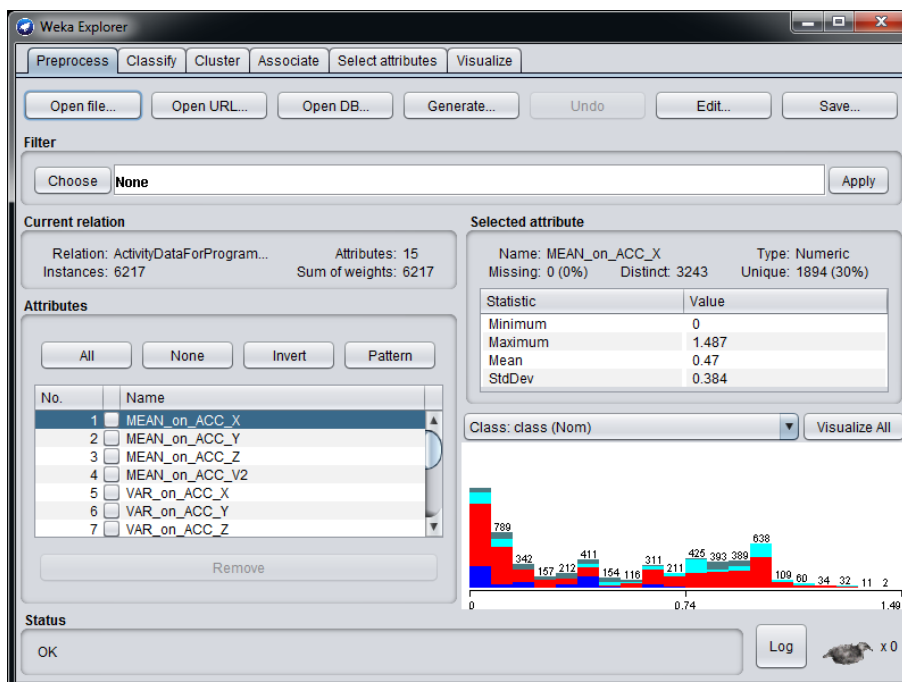
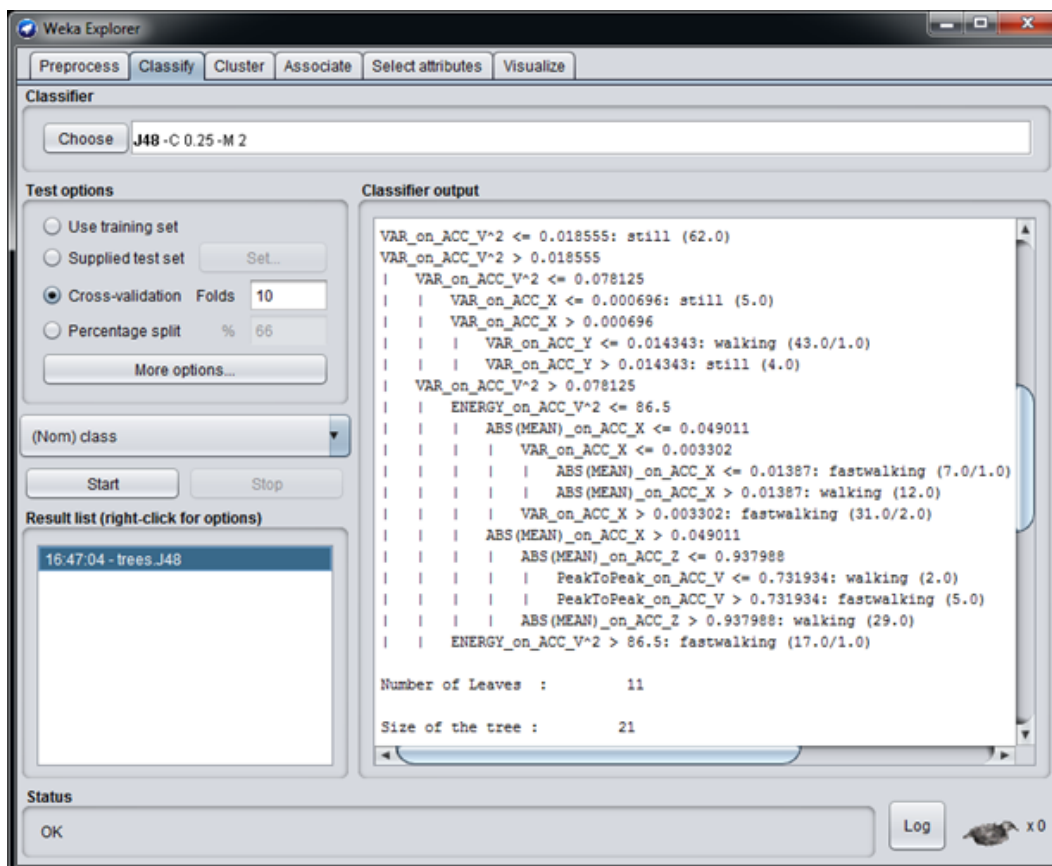


Figure 25. Weka classify



Once the decision tree has been generated, it can be uploaded to the machine learning core tool in MEMS Studio, to complete the generation of the register configuration for the IIS2DULPX.

The machine learning core tool in MEMS Studio accepts as input the decision tree files in a textual format (.txt). The textual file must contain the decision tree in the Weka J48 format (an example of a decision tree is shown in Figure 26. Decision tree format). From the Weka [Classifier output] (Figure 25), the decision tree has to be selected starting from the first line (first node) or in the RapidMiner format (Appendix B). The last two rows (number of leaves and size of the tree) are optional. The selected output from Weka has to be copied to a text file.

Figure 26. Decision tree format

```

File Edit Format View Help
VAR_on_ACC_VA2 <= 0.018555: still (62.0)
VAR_on_ACC_VA2 > 0.018555
  VAR_on_ACC_VA2 <= 0.078125
    VAR_on_ACC_X <= 0.000696: still (5.0)
    VAR_on_ACC_X > 0.000696
      VAR_on_ACC_Y <= 0.014343: walking (43.0/1.0)
      VAR_on_ACC_Y > 0.014343: still (4.0)
  VAR_on_ACC_VA2 > 0.078125
    ENERGY_on_ACC_VA2 <= 86.5
      ABS(MEAN)_on_ACC_X <= 0.049011
        VAR_on_ACC_X <= 0.003302
          ABS(MEAN)_on_ACC_X <= 0.01387: fastwalking (7.0/1.0)
          ABS(MEAN)_on_ACC_X > 0.01387: walking (12.0)
          VAR_on_ACC_X > 0.003302: fastwalking (31.0/2.0)
        ABS(MEAN)_on_ACC_X > 0.049011
          ABS(MEAN)_on_ACC_Z <= 0.937988
            PeakToPeak_on_ACC_V <= 0.731934: walking (2.0)
            PeakToPeak_on_ACC_V > 0.731934: fastwalking (5.0)
          ABS(MEAN)_on_ACC_Z > 0.937988: walking (29.0)
      ENERGY_on_ACC_VA2 > 86.5: fastwalking (17.0/1.0)
    Number of Leaves : 11
    Size of the tree : 21
  
```

If the decision tree has been generated from a different tool, the format must be converted to the Weka J48 format (or to the RapidMiner format) in order to allow the machine learning core tool in MEMS Studio to read the decision tree correctly.

## 2.3

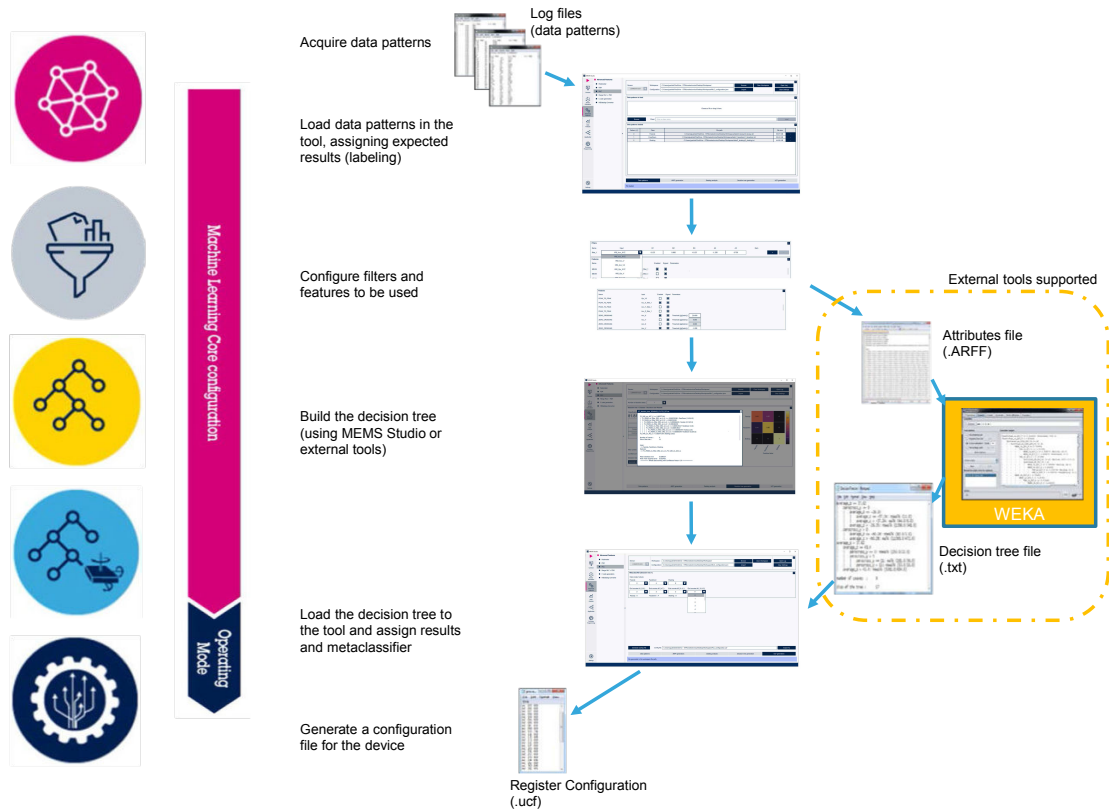
### Configuration procedure

Figure 27 shows the whole procedure of the machine learning processing, from the data patterns to the generation of a register setting for the device (IIS2DULPX).

As seen in Section 2.1: MEMS Studio, the data patterns can be acquired in the [Sensor Evaluation] [Save to File] tab of the MEMS Studio GUI. If this is not possible or if the user wants to use some different data patterns, they can still be uploaded in the machine learning core tool of MEMS Studio, with a few limitations:

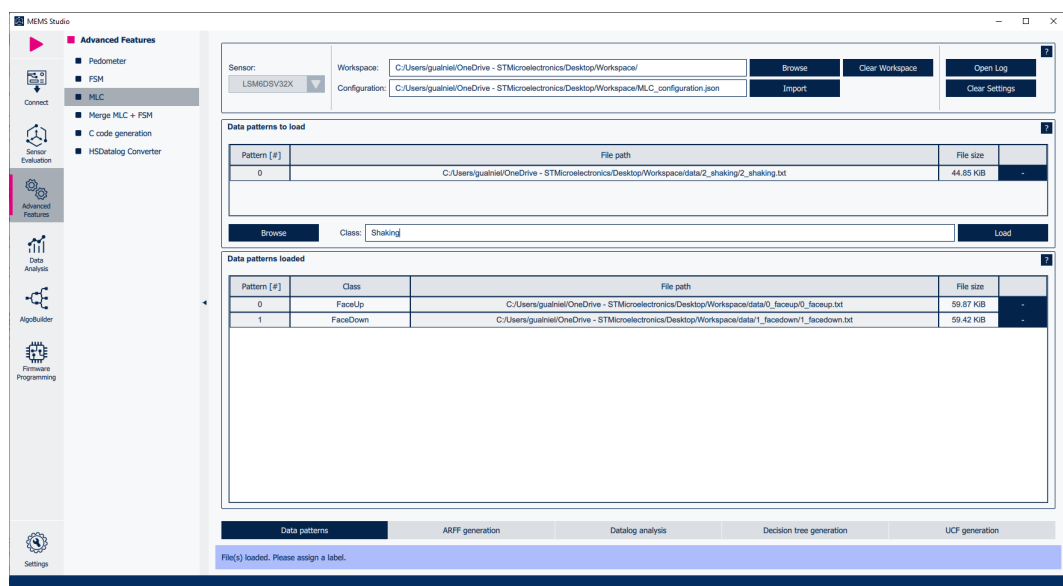
- Every data pattern has to start with a header line in one of the formats below, containing the unit of measurement of the data.
  - acc\_x [mg] acc\_y [mg] acc\_z [mg] temp [C]
  - acc\_x [mg] acc\_y [mg] acc\_z [mg] ah\_qvar [LSB]
- The data after the header line must be separated by “tab” or “comma”.
- The order of columns does not matter, but different logs must remain consistent and contain the same columns.

Figure 27. Configuration procedure



Opening the machine learning core tool available in MEMS Studio, the data patterns, acquired in the format described above, can be loaded assigning the expected result for each data log (as shown in the following figure).

Figure 28. Assigning a result to a data pattern



When all the data patterns have been loaded, the machine learning core parameters can be configured through the **[Configuration]** tab. These parameters are ODR, full scales, number of decision trees, window length, filters, features, and so on (as shown in Figure 29, Figure 30, Figure 31, Figure 32).

Figure 29. Configuration of machine learning core

Figure 30. Configuration of filters

Figure 31. Configuration of features

Figure 32. ARFF generation

Multiple filters and multiple features can be chosen (Figure 30). All the available features can be easily selected using the checkboxes (Figure 31).

Once all the features have been configured, the machine learning core tool in MEMS Studio generates an ARFF file (Figure 32), which is the file containing all the features computed from the training data. Figure 33 shows an example of an ARFF file generated by the machine learning core tool in MEMS Studio.

MEMS Studio has a built-in tool for decision tree generation, which internally uses the ARFF file to generate a decision tree, however, the ARFF file can also be used in external tools (for instance Weka). The decision tree generated with the external tool can be imported in MEMS Studio.

In some cases, the user must adapt the ARFF file to the file format required by other external tools for decision tree generation, and also the decision tree must be compatible with the format described in Section 2.2: Decision tree generation. For more information about the external tools supported, refer to the appendix sections.

Figure 33. ARFF file

```

1 @relation 'MLC'
2
3 @attribute ABS(MEAN)_on_ACC_X numeric
4 @attribute ABS(MEAN)_on_ACC_Y numeric
5 @attribute ABS(MEAN)_on_ACC_V^2 numeric
6 @attribute ABS(MEAN)_on_ACC_V^2 numeric
7 @attribute ABS(VAR)_on_ACC_X numeric
8 @attribute ABS(VAR)_on_ACC_Y numeric
9 @attribute ABS(VAR)_on_ACC_X numeric
10 @attribute ABS(VAR)_on_ACC_V^2 numeric
11 @attribute ABS(ENERGY)_on_ACC_V^2 numeric
12 @attribute ABS(ENERGY)_on_filter_BP_on_ACC_V^2 numeric
13 @attribute ABS(ENERGY)_on_filter_BP_on_ACC_V^2 numeric
14 @attribute ABS(ZeroCross)_on_filter_BP_on_ACC_V^2 numeric
15 @attribute ABS(ZeroCross)_on_filter_BP_on_ACC_V^2 numeric
16 @attribute ABS(PeakToPeak)_on_ACC_V numeric
17 @attribute class {Stationary, Walking, Jogging, Biking}
18
19 #data
20 0.0058403, 0.0390625, 1.01465, 1.03906, 4.17235e-04, 3.8147e-06, 0.00683594, 0.0107422, 80.25, 0.585938, 73.75, 0, 1, 0.0146484, Stationary
21 0.0059967, 0.0390625, 1.01465, 1.03613, 2.02656e-04, 7.62939e-06, 0.00683594, 0.00878906, 79.875, 0.004704, 79.9375, 0, 0, 0.0107422, Stationary
22 0.00609207, 0.039978, 1.01465, 1.03223, 4.64916e-04, 4.76837e-06, 0.00976562, 0.00488281, 80.375, 0.00771523, 80.625, 0, 0, 0.0136719, Stationary
23 0.00559235, 0.0400696, 1.0127, 1.03516, 3.03984e-04, 7.62939e-06, 0.0078125, 0.00585938, 80, 0.0043273, 80, 0, 0, 0.0126953, Stationary
24 0.00618744, 0.0392151, 1.01562, 1.03418, 3.45707e-04, 8.58307e-06, 0.00976562, 0, 80.25, 0.00463101, 80.0625, 0, 0, 0.0146484, Stationary
25 0.00530624, 0.0394592, 1.0166, 1.0332, 4.05312e-04, 9.53674e-06, 0.00195312, 0.00976562, 80.1875, 0.00390053, 80.125, 0, 0, 0.0126953, Stationary
26 0.00591278, 0.0392761, 1.0166, 1.03418, 3.49549e-04, 7.62939e-06, 0.00976562, 0, 80.25, 0.00770549, 80.9375, 0, 0, 0.0126953, Stationary
27 0.00541306, 0.0393677, 1.01465, 1.03125, 3.27826e-04, 1.81198e-05, 0, 0.00976562, 79.9375, 0.00463101, 80, 0, 0, 0.0136719, Stationary
28 0.00675964, 0.0390909, 1.01562, 1.03613, 1.90735e-04, 1.14441e-05, 0.00292969, 0.00292969, 80.3125, 0.004609875, 80.5, 0, 0, 0.0107422, Stationary
29 0.00554276, 0.0393066, 1.01465, 1.03125, 3.57622e-04, 6.67572e-06, 0.00976562, 0.00976562, 79.9375, 0.00419617, 80.0625, 0, 0, 0.0107422, Stationary
30 0.00581741, 0.0394287, 1.01367, 1.03223, 6.19888e-04, 1.04904e-05, 0.00292969, 0.00195312, 80.125, 0.004677586, 80.5, 0, 0, 0.0126953, Stationary
31 0.00605392, 0.0397339, 1.0127, 1.03613, 2.5034e-04, 1.04904e-05, 0.00976562, 0.00683594, 80.0625, 0.00499725, 80, 0, 0, 0.0107422, Stationary
32 0.00537109, 0.0390909, 1.0127, 1.03613, 2.86102e-04, 6.67572e-06, 0.00878906, 0.00585938, 80.125, 0.004609875, 80.0625, 0, 0, 0.0136719, Stationary
33 0.00551149, 0.0394592, 1.01465, 1.0332, 2.64938e-04, 1.52589e-05, 0.00292969, 0.00195312, 80.25, 0.00424842, 80.25, 0, 0, 0.0117188, Stationary
34 0.00587463, 0.0397573, 1.01367, 1.0332, 3.43581e-04, 9.53674e-06, 0.00390625, 0.00292969, 80.3125, 0.00118351, 80.875, 0, 0, 0.0136719, Stationary
35 0.00616837, 0.0388794, 1.01367, 1.03613, 3.99351e-04, 7.62939e-06, 0.00488281, 0.00878906, 79.9375, 0.004247002, 80.875, 0, 0, 0.0107422, Stationary
36 0.00630569, 0.0393066, 1.01465, 1.03223, 3.15905e-04, 8.58307e-06, 0.00976562, 0.00390625, 80.25, 0.00437803, 80.1875, 0, 0, 0.0126953, Stationary
37 0.0174408, 0.0148163, 1.02051, 1.04199, 6.4373e-06, 2.86102e-06, 0, 0.00585938, 81.0625, 0.00498295, 81.6875, 0, 0, 0.0126953, Stationary
38 0.0185547, 0.014183, 1.01953, 1.04004, 7.86781e-06, 1.90735e-06, 0, 0.0078125, 80.625, 0.00478029, 81.125, 0, 0, 0.0117188, Stationary
39 0.0185699, 0.0135422, 1.01855, 1.03711, 8.72205e-04, 4.76837e-07, 0, 80.6875, 0.00783416, 81.0625, 0, 0, 0.0126953, Stationary
40 0.0123105, 0.0145569, 1.01953, 1.03906, 5.48333e-04, 1.66893e-06, 0.00976562, 0.00292969, 80.875, 0.00500479, 81.5625, 0, 0, 0.0117188, Stationary
41 0.0187378, 0.0143585, 1.01953, 1.04004, 6.4373e-06, 3.09944e-06, 0.00976562, 0.00683594, 80.6875, 0.00270367, 81.1875, 0, 0, 0.00976562, Stationary
42 0.0182495, 0.0138016, 1.01855, 1.04199, 7.15255e-04, 2.26498e-06, 0.00390625, 0.00683594, 81, 0.00507832, 81.1875, 0, 0, 0.0146484, Stationary
43 0.0188141, 0.0145569, 1.02051, 1.03613, 6.4373e-06, 2.26498e-06, 0.00488281, 0.00683594, 81.0625, 0.00332355, 81.875, 0, 0, 0.0117188, Stationary
44 0.0187531, 0.0141373, 1.01953, 1.04004, 5.94046e-04, 1.19209e-06, 0, 0.00683594, 80.75, 0.00498295, 81.125, 0, 0, 0.0117188, Stationary
45 0.0175171, 0.0140076, 1.01953, 1.04199, 6.4373e-06, 2.98023e-06, 0.00292969, 0.00488281, 81.1875, 0.0011692, 81.75, 0, 0, 0.0136719, Stationary

```

Before generating or loading the decision tree, MEMS Studio also asks for the result values associated with each class recognized by the decision tree. These values are used as possible values for the MLCx\_SRC registers.

Figure 34. Configuration of results and decision tree

**MEMS Studio**

**Advanced Features**

- Pedometer
- FSM
- MLC
- Merge MLC + FSM
- C code generation
- HSDataLog Converter

**Sensor:** LSM6DSV32X

**Workspace:** C:/Users/guaniel/OneDrive - STMicronics/Desktop/Workspace/

**Configuration:** C:/Users/guaniel/OneDrive - STMicronics/Desktop/Workspace/MLC\_configuration.json

**Number of decision trees:** 1

**Decision tree 1 Classes / Decision tree Results**

Classification accuracy: **94.8052%**

Property	Value
Instances	77
Correctly Classified Instances	73
Incorrectly Classified Instances	4
Kappa Statistic	0.340192

Max number of nodes: 15

Confidence factor: 0.9

Decision tree file: sDrive - STMicronics/Desktop/Workspace/ST\_decision\_tree\_20240429\_172309\_237.txt

**Generate Decision Tree** **Inspect tree info**

**Confusion Matrix:**

	FaceUp	FaceDown	Shaking
Actual label FaceUp	0.87	0.13	0
Actual label FaceDown	0	1	0
Actual label Shaking	0	1	

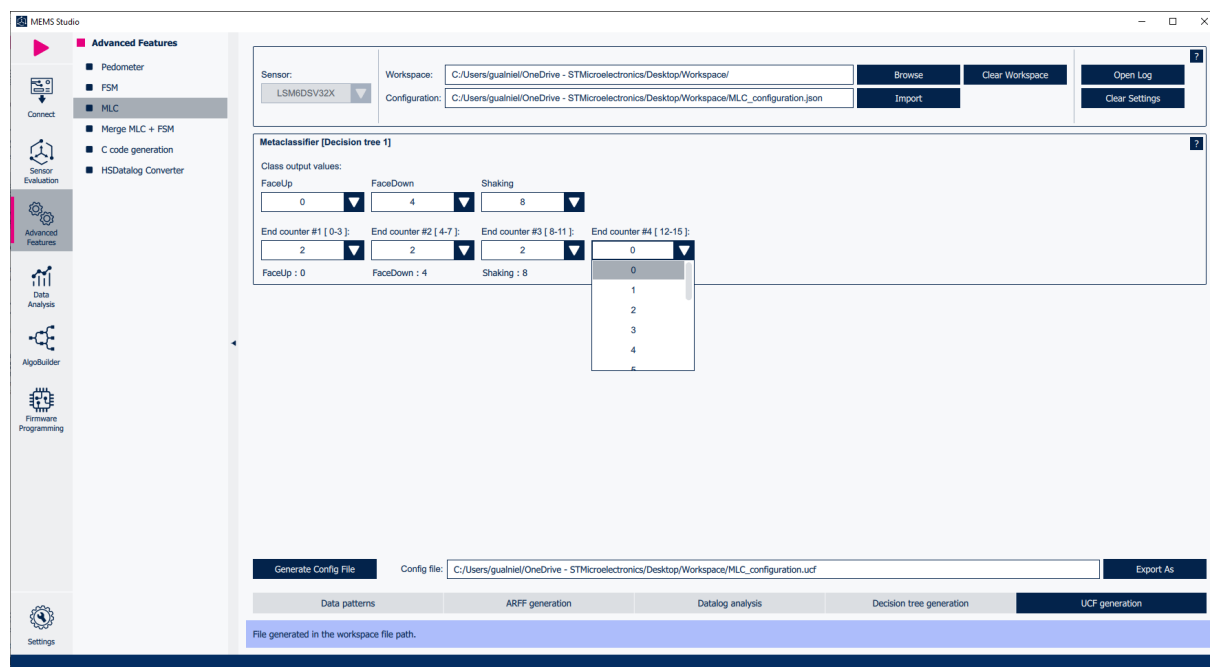
**Predicted label:** FaceUp, FaceDown, Shaking

**Data patterns** **ARFF generation** **Datalog analysis** **Decision tree generation** **UCF generation**



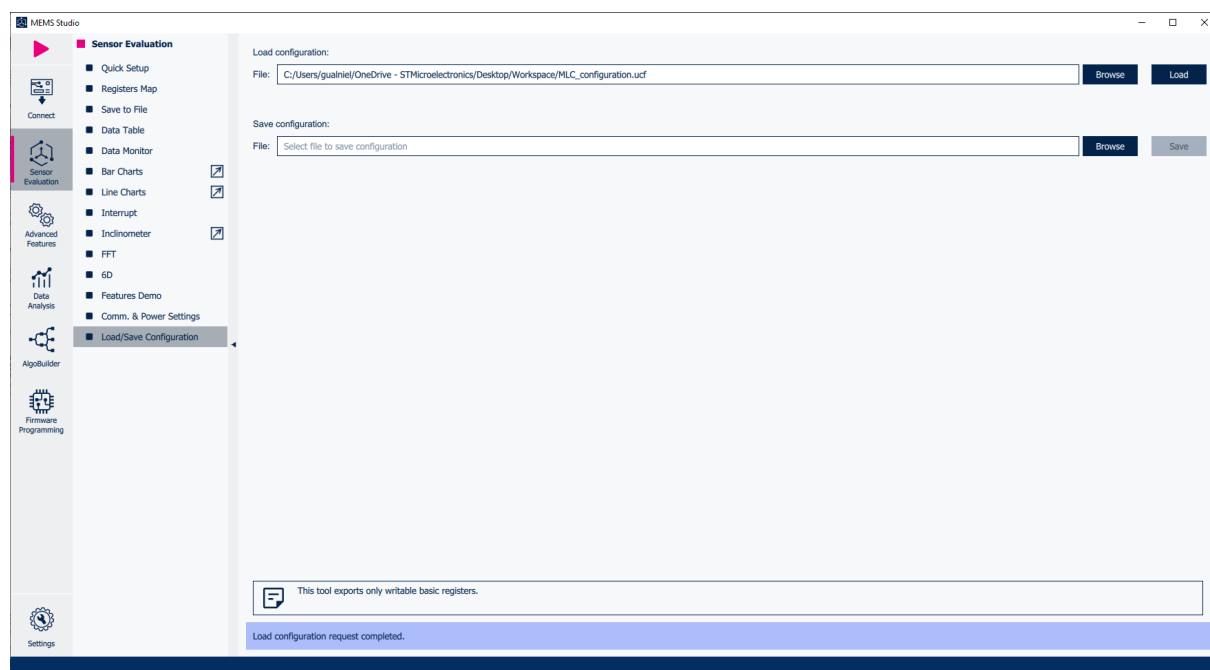
The last step of the configuration process is to configure the **[Metaclassifier]**, which is the optional filter for the generation of the decision tree results. After that, the tool is ready to generate a configuration for the device (Figure 35).

Figure 35. Metaclassifier and device configuration



Once the MLC configuration has been completed, MEMS Studio allows loading the .ucf file generated to directly program the device. The loading feature is available in the **[Sensor Evaluation ] [Load/Save Configuration]** tab of the MEMS Studio main window (Figure 36).

Figure 36. MEMS Studio Load/Save configuration



When the device is programmed, the machine learning core results can be monitored in the **[Sensor Evaluation] [Data Monitor]** tab of MEMS Studio (Figure 37) or in one of the registers tabs containing the machine learning core source registers (Figure 38).

The .ucf file generated by MEMS Studio can also be used for integrating the generated MLC configuration in other platforms and software (for example, AlgoBuilder, Unicleo, SensorTile.box, and so on).

From the .ucf file, it is also possible to convert the sequence of values to a header file (.h) to be imported in any C project (for example, driver, firmware, and so on): MEMS Studio allows .h file generation (from .ucf files) through the "C code generation" dedicated tool in the options tab of the MEMS Studio main window. An example of using the generated .h file in a standard C driver is available in [\[STMems\\_Standard\\_C\\_drivers repository\]](#) on GitHub.

Figure 37. MEMS Studio Data Monitor

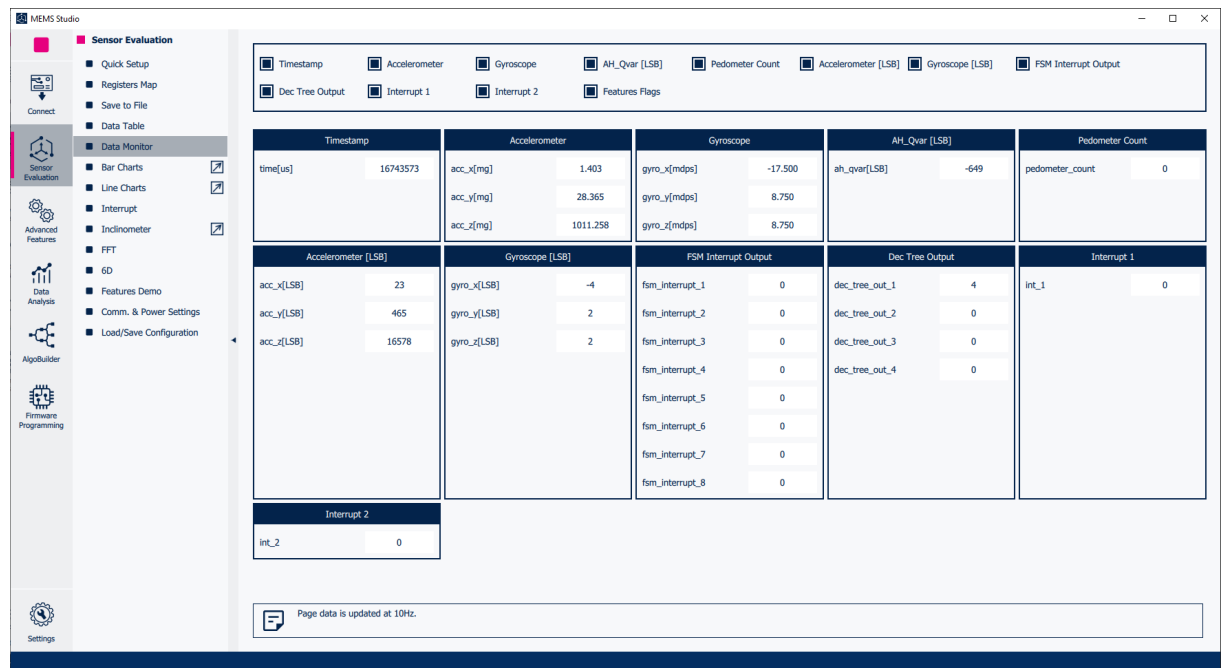


Figure 38. MEMS Studio - machine learning core source registers



## Appendix A Weka

Weka is free software developed at the University of Waikato, New Zealand. It contains a collection of visualization tools and algorithms for data analysis and predictive modeling, together with graphical user interfaces for easy access to these functions.

Weka is one of the most popular machine learning tools for decision tree generation. This section contains some details about this external software, additional details can be found at the links below:

- [Weka download](#)
- [Weka website](#)
- [Weka user guide](#)

All of Weka's techniques are predicated on the assumption that the data is available as one flat file or relation, where each data point is described by a fixed number of attributes.

An ARFF (attribute-relation file format) file is an ASCII text file that describes a list of instances sharing a set of attributes. The ARFF files have two distinct sections, as shown in [Figure 39](#): a header section containing the attributes (features, classes), and a data section containing all the feature values together with the corresponding class to be associated with that set of features.

**Figure 39. ARFF example**

```

1 @relation "HUC"
2
3 @attribute ABS(MEAN)_on_ACC_K numeric
4 @attribute ABS(MEAN)_on_ACC_Y numeric
5 @attribute ABS(MEAN)_on_ACC_Z numeric
6 @attribute ABS(MEAN)_on_ACC_V-2 numeric
7 @attribute ABS(VAR)_on_ACC_K numeric
8 @attribute ABS(VAR)_on_ACC_Y numeric
9 @attribute ABS(VAR)_on_ACC_Z numeric
10 @attribute ABS(VAR)_on_ACC_V-2 numeric
11 @attribute ABS(ENERGY)_on_ACC_V-2 numeric
12 @attribute ABS(ENERGY)_on_filter_BP_on_ACC_V-2 numeric
13 @attribute ABS(ENERGY)_on_filter_IIR2_on_ACC_V-2 numeric
14 @attribute ABS(ZeroCross)_on_filter_BP_on_ACC_V-2 numeric
15 @attribute ABS(ZeroCross)_on_filter_IIR2_on_ACC_V-2 numeric
16 @attribute ABS(PeakToPeak)_on_ACC_V numeric
17 @attribute class {Stationary, Walking, Jogging, Biking}
18
19 @data
20 0.00584603, 0.0390625, 1.01465, 1.03906, 4.17233e-06, 3.8147e-06, 0.00683594, 0.0107422, 80.25, 0.005938, 73.75, 0, 1, 0.0146484, Stationary
21 0.0059987, 0.0390406, 1.01465, 1.03613, 2.02656e-06, 7.62939e-06, 0.00683594, 0.0078906, 79.875, 0.0004704, 79.9375, 0, 0, 0.0107422, Stationary
22 0.00609207, 0.039978, 1.01465, 1.03223, 4.64916e-06, 4.76837e-06, 0.000976562, 0.00488281, 80.375, 0.000771523, 80.625, 0, 0, 0.0136719, Stationary
23 0.00559235, 0.0400696, 1.0127, 1.03516, 3.03984e-06, 7.62939e-06, 0.0078125, 0.00585938, 80, 0.00043273, 80, 0, 0, 0.0126953, Stationary
24 0.00618744, 0.0392131, 1.01562, 1.03418, 3.43707e-06, 8.59307e-06, 0.000976562, 0, 80.25, 0.000436101, 80.0625, 0, 0, 0.0146484, Stationary
25 0.00530624, 0.0394892, 1.0166, 1.0332, 4.0512e-06, 9.32674e-06, 0.00195312, 0.000976562, 80.1875, 0.000390053, 80.125, 0, 0, 0.0126953, Stationary
26 0.00591278, 0.0392763, 1.0166, 1.03418, 3.49549e-06, 7.62939e-06, 0.000976562, 0, 80.25, 0.000770569, 80.9375, 0, 0, 0.0126953, Stationary
27 0.00541306, 0.0393677, 1.01465, 1.03125, 3.27826e-06, 1.81198e-05, 0, 0.000976562, 79.9375, 0.000663757, 80, 0, 0, 0.0136719, Stationary
28 0.00679964, 0.0393099, 1.01562, 1.03613, 1.90735e-06, 1.14441e-05, 0.00292969, 0.00292969, 80.3125, 0.000409875, 80.5, 0, 0, 0.0107422, Stationary
29 0.00554276, 0.0393066, 1.01465, 1.03125, 3.57426e-06, 4.67572e-06, 0.000976562, 0.000976562, 79.9375, 0.000419617, 80.0625, 0, 0, 0.0107422, Stationary
30 0.00581741, 0.0394287, 1.01367, 1.03223, 4.19888e-06, 1.04904e-05, 0.00292969, 0.00195312, 80.125, 0.000477586, 80.5, 0, 0, 0.0126953, Stationary
31 0.00605392, 0.0397339, 1.0127, 1.03613, 2.5034e-06, 1.04904e-05, 0.000976562, 0.00683594, 80.0625, 0.000499725, 80, 0, 0, 0.0107422, Stationary
32 0.00537109, 0.039093, 1.0127, 1.03613, 2.86102e-06, 6.67572e-06, 0.0078906, 0.00585938, 80.125, 0.000460625, 80.0625, 0, 0, 0.0136719, Stationary
33 0.00651169, 0.0394592, 1.01465, 1.0332, 2.26498e-06, 1.52888e-05, 0.00292969, 0.00195312, 80.25, 0.000424662, 80.25, 0, 0, 0.0117188, Stationary
34 0.00587463, 0.0387573, 1.01367, 1.0332, 3.43508e-06, 9.53674e-07, 0.00390625, 0.00292969, 80.3125, 0.00118351, 80.875, 0, 0, 0.0175781, Stationary
35 0.00616337, 0.0388784, 1.01367, 1.03613, 3.99351e-06, 7.62939e-06, 0.00488281, 0.0078906, 79.9375, 0.000247002, 80.875, 0, 0, 0.0107422, Stationary
36 0.00630569, 0.0393066, 1.01465, 1.03223, 3.15905e-06, 8.59307e-06, 0.000976562, 0.00390625, 80.25, 0.00037803, 80.1875, 0, 0, 0.0126953, Stationary
37 0.0174408, 0.0148163, 1.02051, 1.04004, 6.4373e-06, 2.86102e-06, 0, 0.00585938, 81.0625, 0.000498295, 81.6875, 0, 0, 0.0126953, Stationary
38 0.0185547, 0.0141153, 1.01953, 1.04004, 7.86781e-06, 1.80735e-06, 0, 0.0078125, 80.625, 0.000476039, 81.125, 0, 0, 0.0117188, Stationary
39 0.0185699, 0.0134222, 1.01855, 1.03711, 5.72205e-06, 4.76837e-07, 0, 0.0, 80.6875, 0.000763416, 81.0625, 0, 0, 0.0126953, Stationary
40 0.0183105, 0.0145569, 1.01953, 1.03906, 5.48363e-06, 1.66893e-06, 0.000976562, 0.00292969, 80.875, 0.000500679, 81.5625, 0, 0, 0.0117188, Stationary
41 0.0187378, 0.0143585, 1.01953, 1.04004, 6.4373e-06, 3.09944e-06, 0.000976562, 0.00683594, 80.6875, 0.000270367, 81.1875, 0, 0, 0.00976562, Stationary
42 0.0182495, 0.0138016, 1.01855, 1.04199, 7.15256e-06, 2.26498e-06, 0.00390625, 0.00683594, 81, 0.000507032, 81.1875, 0, 0, 0.0146484, Stationary
43 0.0180141, 0.0145669, 1.02051, 1.03613, 6.4373e-06, 2.26498e-06, 0.00488281, 0.00683594, 81.0625, 0.000332355, 81.875, 0, 0, 0.0117188, Stationary
44 0.0187931, 0.0141379, 1.01953, 1.04004, 5.96046e-06, 1.19209e-06, 0, 0.00683594, 80.75, 0.000498295, 81.125, 0, 0, 0.0117188, Stationary
45 0.0175171, 0.0140076, 1.01953, 1.04199, 6.4373e-06, 2.98023e-06, 0.00292969, 0.00488281, 81.1875, 0.0011692, 81.75, 0, 0, 0.0136719, Stationary

```

Figure 40. Weka GUI Chooser



When launching Weka, the **[Weka GUI Chooser]** window appears (Figure 40), and the **[Explorer]** section, selectable through the first button, is the Weka main user interface.

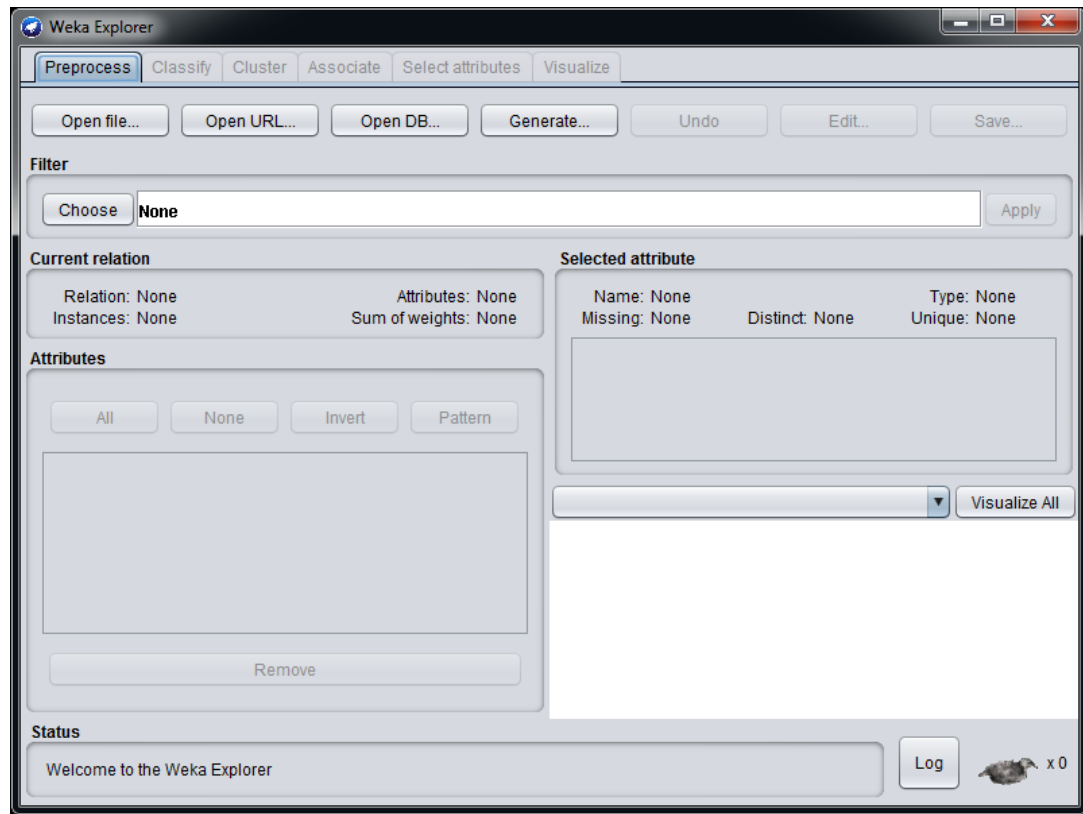
When selecting the Weka **[Explorer]** a new interface appears (Figure 41). Several tabs are available in the **[Explorer]** interface:

- The **[Preprocess]** tab has facilities for importing data.
- The **[Classify]** tab allows applying classification and regression algorithms to the dataset in order to estimate the accuracy of the resulting predictive model and to visualize erroneous predictions.
- The **[Cluster]** tab gives access to the clustering techniques in Weka.
- The **[Associate]** tab provides access to association rule learners that attempt to identify all important interrelationships between attributes in the data.
- The **[Select attributes]** tab provides algorithms for identifying the most predictive attributes in a dataset.
- The **[Visualize]** tab shows a scatter plot matrix.

In this appendix section, only the **[Preprocess]** and **[Classify]** tabs are described.

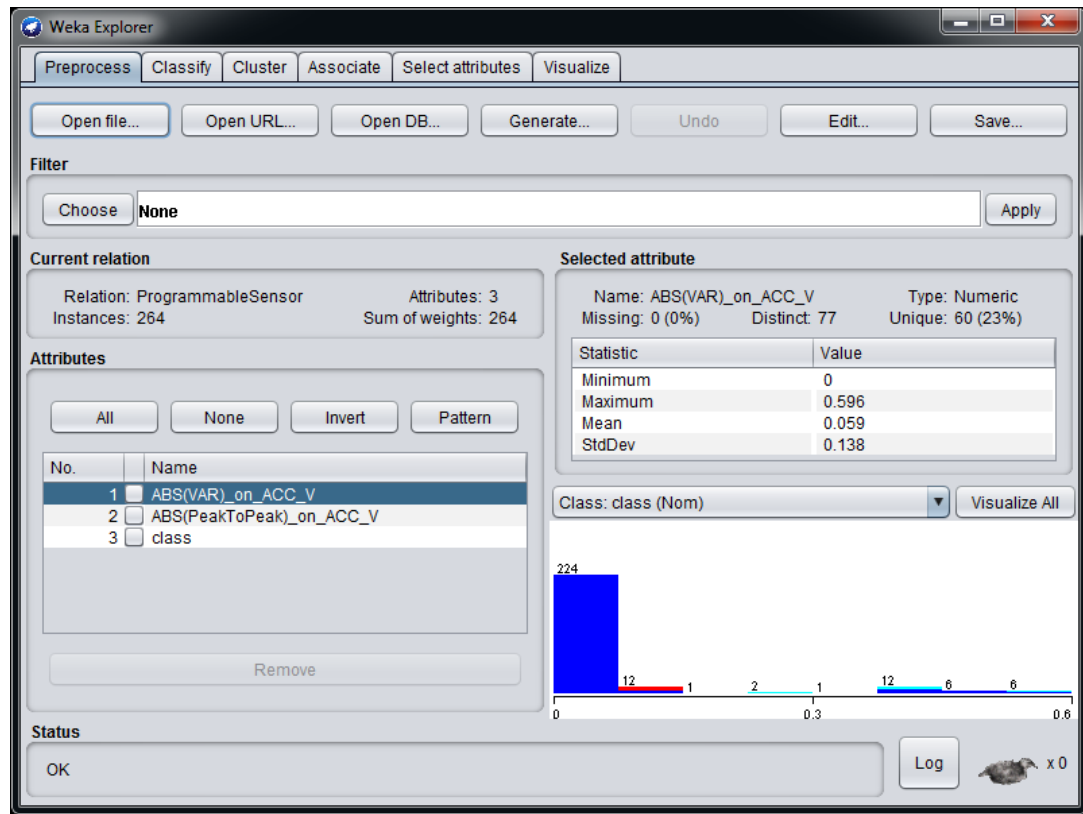
The **[Preprocess]** tab is shown in Figure 41, it allows loading an ARFF file from the **[Open file]** button.

Figure 41. Weka Explorer



When the ARFF file has been loaded, the **[Preprocess]** tab shows all the attributes (features and classes) of the imported ARFF file. The attributes can be visualized in a graphical way and the user can select the attributes to be used for the classification.

Figure 42. Weka Explorer - Attributes



After choosing the attributes, a classifier can be configured in the **[Classify]** tab of Weka **[Explorer]** (Figure 43). There are many classifiers available in Weka: by choosing the classifier **[J48]** (under **[trees]**) a decision tree can be generated (Figure 44).

Figure 43. Weka Classify

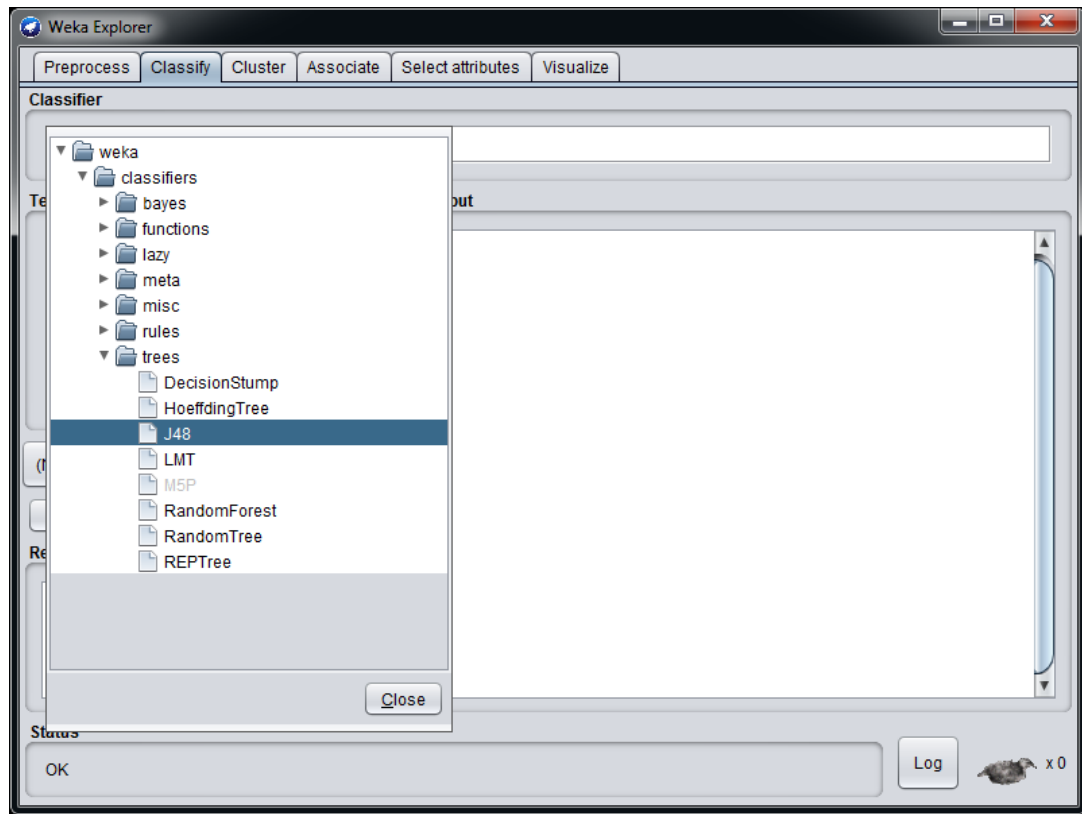
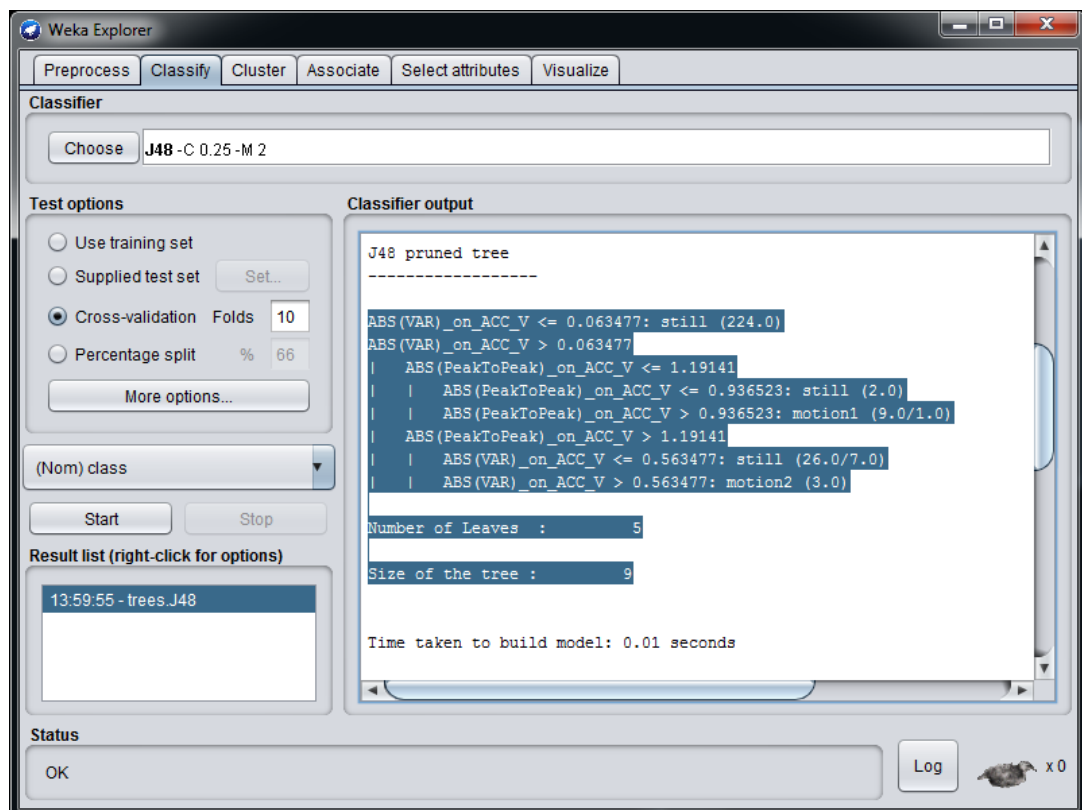
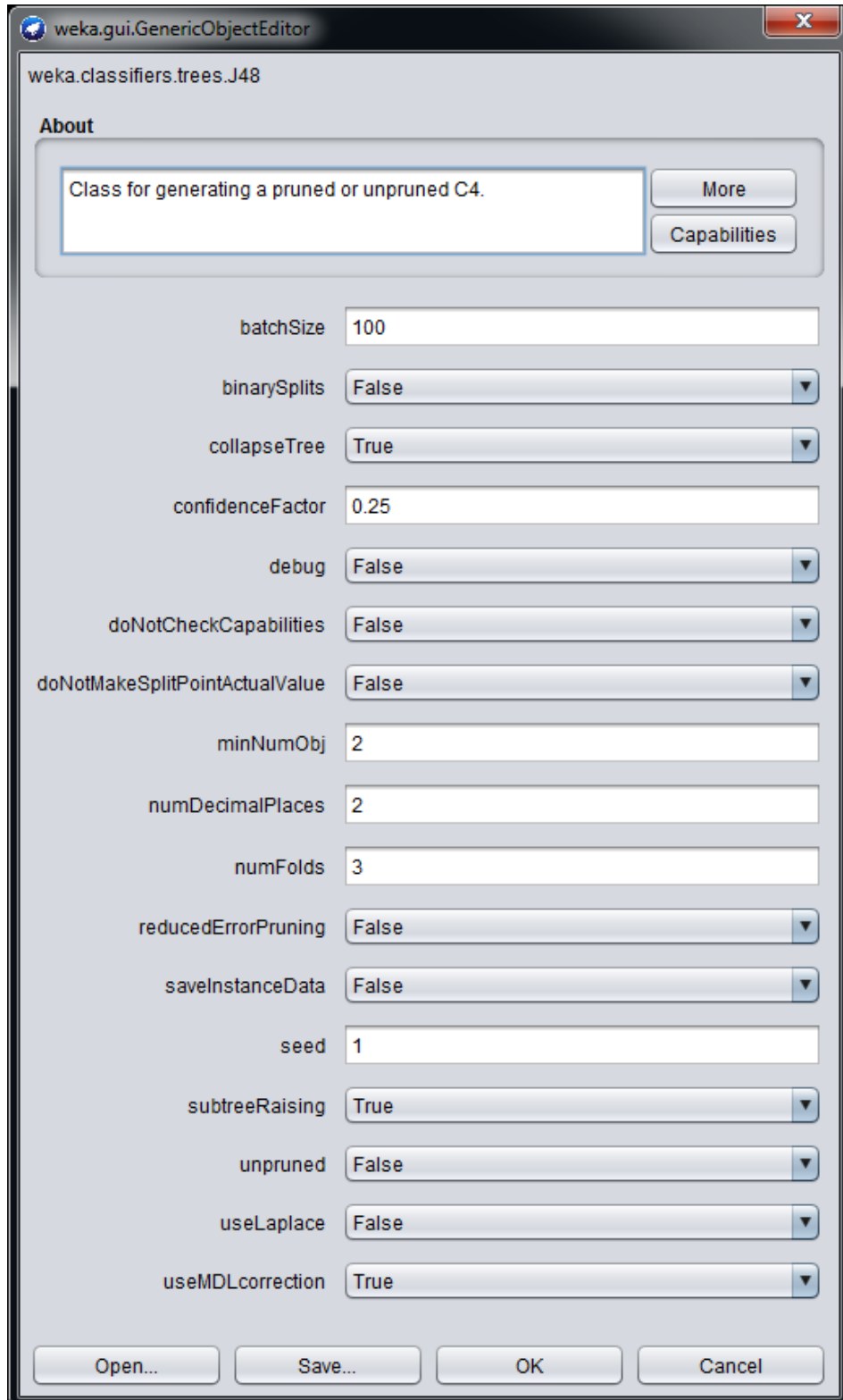


Figure 44. Weka Classify J48



Many parameters can be changed in the classifier section (Figure 45), and different decision trees can be generated by clicking the **[Start]** button (see Figure 44).

Figure 45. Weka J48 classifier parameters



The image shows a screenshot of the 'weka.gui.GenericObjectEditor' window, specifically the 'weka.classifiers.trees.J48' classifier parameters dialog. The window has a title bar with a close button. Below the title bar, the text 'weka.classifiers.trees.J48' is displayed. The main area is titled 'About' and contains a text box with the text 'Class for generating a pruned or unpruned C4.' and two buttons: 'More' and 'Capabilities'. Below this, there is a list of parameters with their corresponding values in text boxes or dropdown menus. At the bottom, there are four buttons: 'Open...', 'Save...', 'OK', and 'Cancel'.

Parameter	Value
batchSize	100
binarySplits	False
collapseTree	True
confidenceFactor	0.25
debug	False
doNotCheckCapabilities	False
doNotMakeSplitPointActualValue	False
minNumObj	2
numDecimalPlaces	2
numFolds	3
reducedErrorPruning	False
saveInstanceData	False
seed	1
subtreeRaising	True
unpruned	False
useLaplace	False
useMDLcorrection	True



- Number of nodes

Since the decision tree generated by the J48 algorithm in Weka is a binary tree, the number of nodes can be obtained by subtracting one from the parameter "Number of Leaves" which appears in the first row just after the decision tree (see [Figure 46. Correctly classified instances](#)). It is also possible to visualize the decision tree graphically by right-clicking on the **[Result list]** section on the left part of the tool (where all the models created can be easily compared).

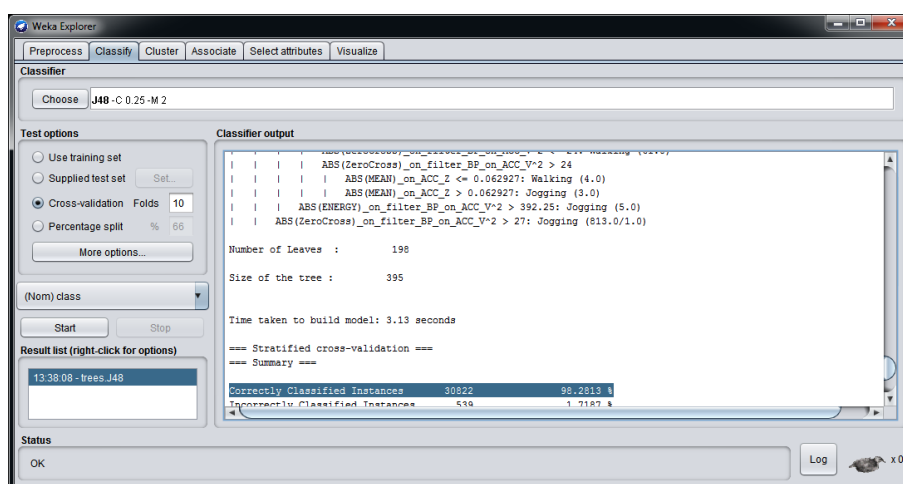
- Correctly classified instances

It is an estimate of the accuracy of the model created. The result of the model is compared to the result provided by the labels. **Figure 46. Correctly classified instances** shows the correctly classified instances of an activity recognition model.

- Confusion matrix

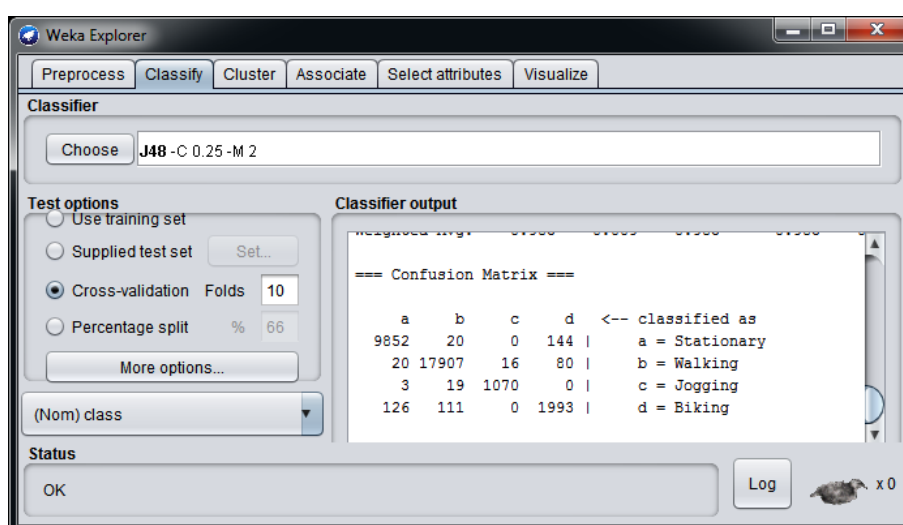
An NxN table that summarizes how successful the classification model predictions were, that is, the correlation between the label and the model classification. One axis of a confusion matrix is the label that the model predicted, and the other axis is the actual label.

**Figure 46. Correctly classified instances**



**Figure 47. Confusion matrix** shows an example of a confusion matrix for an activity recognition algorithm with four classes (stationary, walking, jogging, biking).

### Figure 47. Confusion matrix



## Appendix B RapidMiner

RapidMiner is a data science software platform which provides an integrated environment for data preparation, machine learning, deep learning, text mining, and predictive analytics. It is used for business and commercial applications as well as for research, education, training, rapid prototyping, and application development and supports all steps of the machine learning process including data preparation, results visualization, model validation and optimization.

This appendix describes the process to generate a decision tree starting from an ARFF file, using RapidMiner Studio. A simple example of a hand-washing detection algorithm is considered for this purpose. After opening RapidMiner Studio, the main steps are the following:

1. Add the **[Open File]** operator from the **[Operators]** window on the left, and drag the operator to the blank **[Process]** window as shown in [Figure 48](#).
2. Double-click the **[Open File]** operator to choose the ARFF file to be loaded.
3. Find the **[Read ARFF]** operator and drag it to the **[Process]** window. Then connect the **[Read ARFF]** operator to the **[Open File]** operator as shown in [Figure 49](#).
4. Find the **[Set Role]** operator and drag it to the **[Process]** window. Then, double-click the **[Set Role]** operator and type the attribute name and target role in the **[Parameters]** window as shown in [Figure 50](#).
5. Find the **[Decision Tree]** operator and set the corresponding parameters as shown in [Figure 51](#). You also need to connect the **[Decision Tree]** operator to **[res]**.
6. Click the **[Run]** button (blue triangle icon) in the upper left section of RapidMiner Studio.
7. After the **[Run]** button has been clicked, the **[Results]** tab shows the decision tree generated, in terms of **[Graph]** ([Figure 52](#)) and **[Description]**.
8. In the **[Description]** section of the decision tree generated ([Figure 53](#)) you need to copy the decision tree to a text file, which can be imported in the MLC tool in MEMS Studio.

**Figure 48. RapidMiner Studio - Open File**

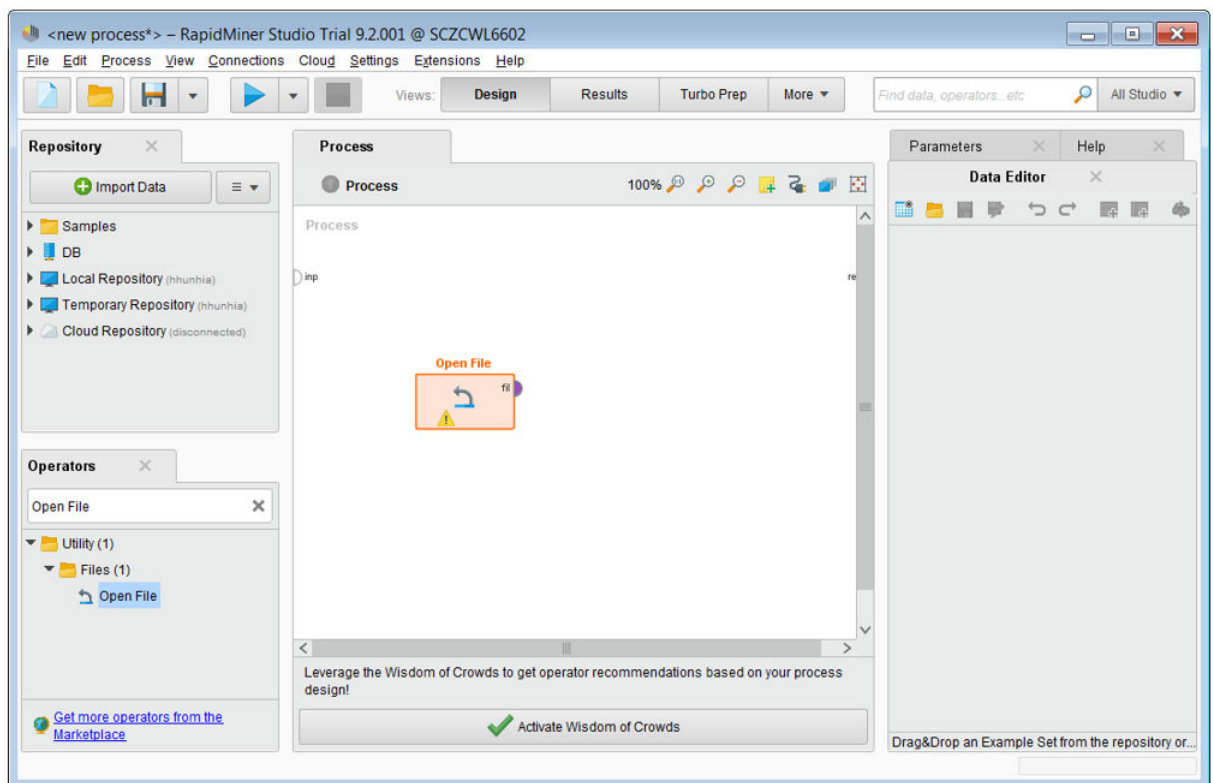


Figure 49. RapidMiner Studio - Read ARFF

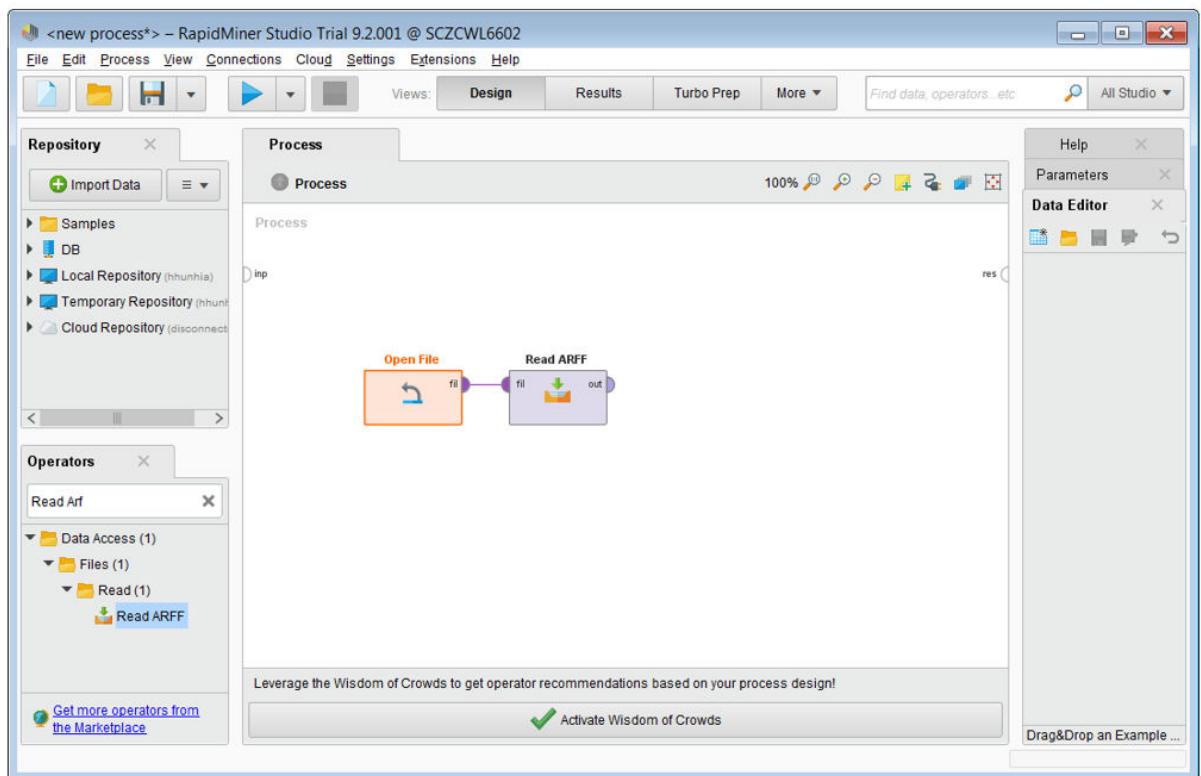


Figure 50. RapidMiner Studio - Set Role

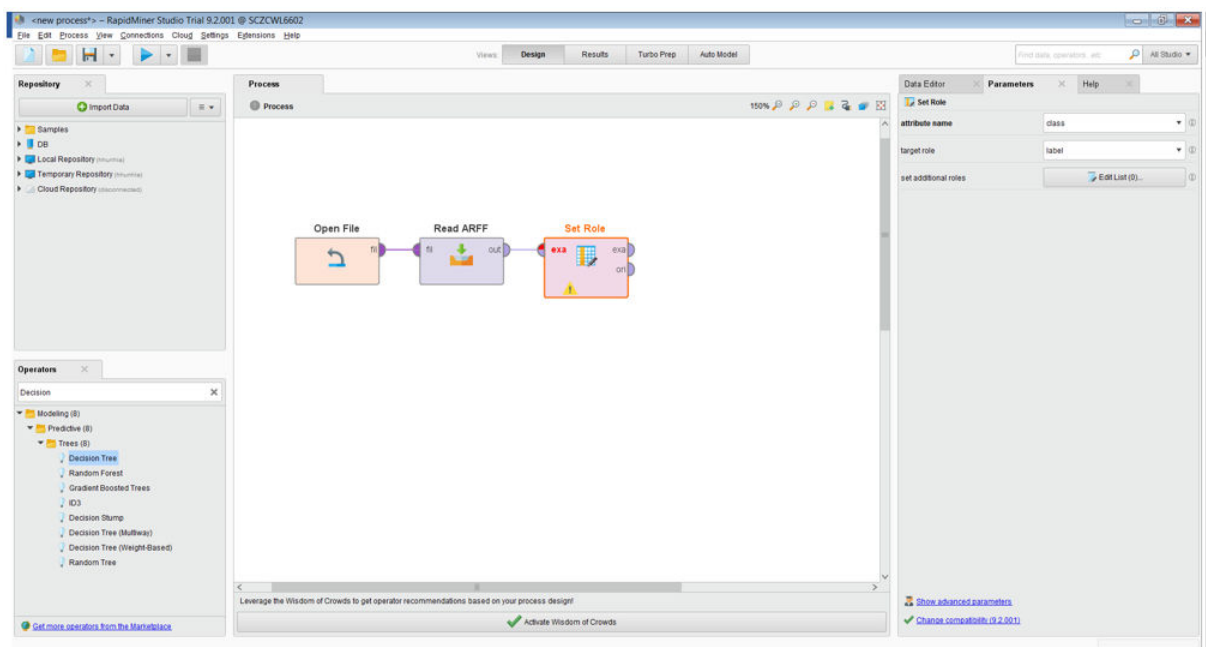


Figure 51. RapidMiner Studio - Decision Tree operator

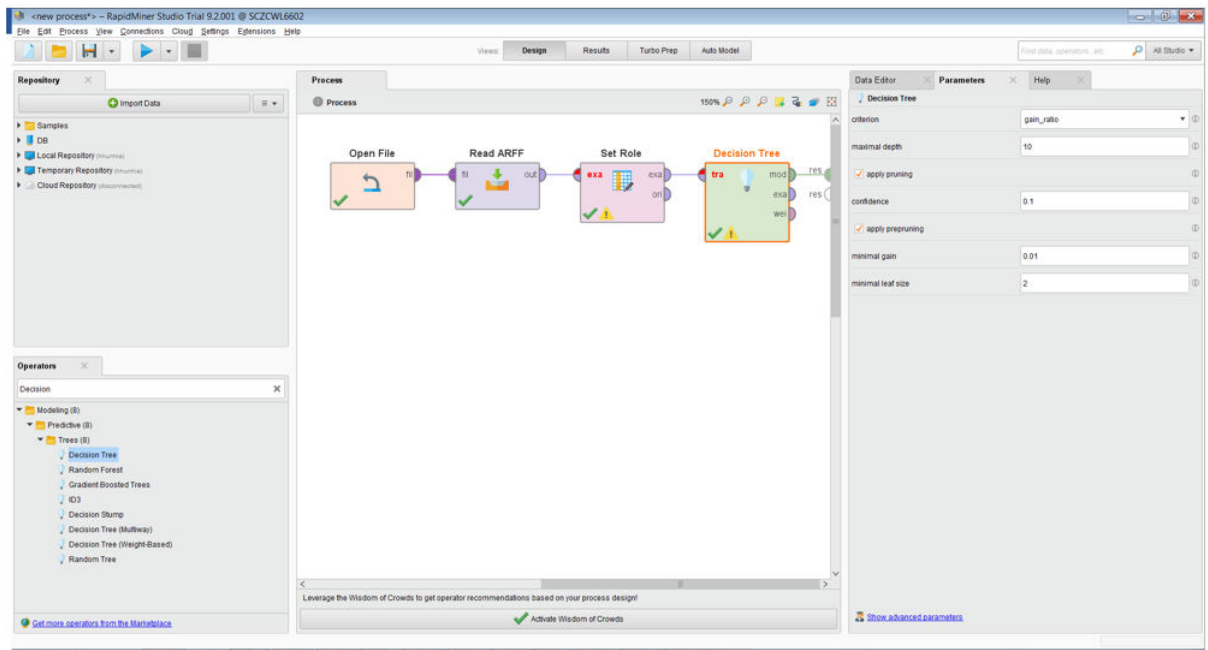


Figure 52. RapidMiner Studio - Decision Tree graph

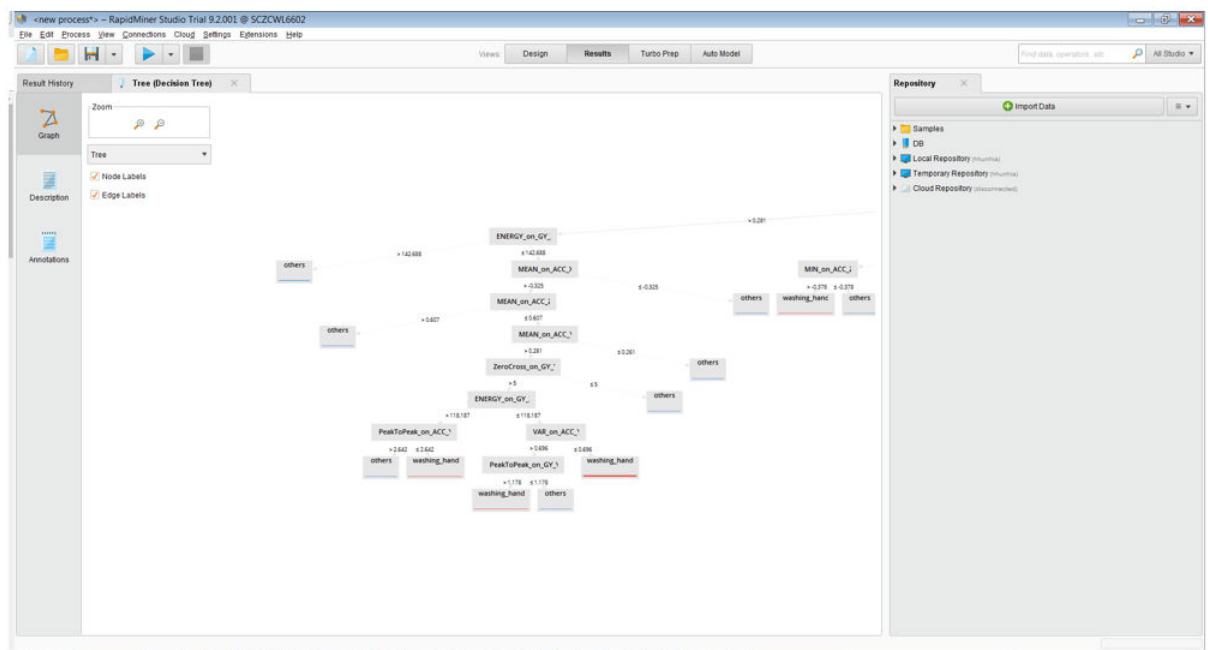


Figure 53. RapidMiner Studio - Decision Tree description

The screenshot displays the RapidMiner Studio interface with a decision tree model. The main window shows the 'Tree (Decision Tree)' description, which is a complex set of rules for classification. The rules are structured as follows:

```

VAR_on_ACC_Z > 0.281
|
| ENERGY_on_GY_Z > 142.688: others {others=98, washing_hand=1}
| ENERGY_on_GY_Z ≤ 142.688
| | MEAN_on_ACC_X > -0.325
| | | MEAN_on_ACC_Z > 0.607: others {others=5, washing_hand=0}
| | | MEAN_on_ACC_Z ≤ 0.607
| | | | MEAN_on_ACC_Y > 0.261
| | | | | ZeroCross_on_GY_Y > 5
| | | | | ENERGY_on_GY_Z > 118.187
| | | | | | PeakToPeak_on_ACC_Y > 2.642: others {others=2,
| | | | | | PeakToPeak_on_ACC_Y ≤ 2.642: washing_hand {othe
| | | | | ENERGY_on_GY_Z ≤ 118.187
| | | | | | VAR_on_ACC_Y > 0.696
| | | | | | PeakToPeak_on_GY_V > 1.178: washing_hand {c
| | | | | | PeakToPeak_on_GY_V ≤ 1.178: others {others=
| | | | | VAR_on_ACC_Y ≤ 0.696: washing_hand {others=4, t
| | | | | ZeroCross_on_GY_Y ≤ 5: others {others=2, washing_hand=
| | | | | MEAN_on_ACC_Y ≤ 0.261: others {others=3, washing_hand=0}
| | | | MEAN_on_ACC_X ≤ -0.325: others {others=24, washing_hand=0}
|
| VAR_on_ACC_Z ≤ 0.281
| | MAX_on_ACC_X > 2.544
| | | MIN_on_ACC_Z > -0.378: washing_hand {others=0, washing_hand=3}
| | | MIN on ACC Z ≤ -0.378: others {others=2, washing hand=0}

```

The interface includes a menu bar (File, Edit, Process, View, Connections, Cloud, Settings, Extensions, Help), a toolbar with icons for file operations and execution, and a sidebar with tabs for 'Result History', 'Tree (Decision Tree)', 'Graph', 'Description', and 'Annotations'. The 'Repository' panel on the right shows a list of data sources: Samples, DB, Local Repository (hhunhia), Temporary Repository (hhunhia), and Cloud Repository (disconnected).

## Appendix C MATLAB®

Decision trees for the machine learning core can be generated with MATLAB®. Dedicated scripts for MATLAB® are available at [MATLAB](#).

After importing all the scripts in the MATLAB® workspace, the function [**Generate\_DecisionTree()**] should be called, specifying two file names (an *.arff* file containing the features computed by the machine learning core tool in MEMS Studio and a *.txt* file that contains the decision tree generated):

```
filename_ARFF = 'features.arff';
```

```
filename_dectree = 'decision_tree.txt';
```

```
Generate_DecisionTree(filename_ARFF, filename_dectree);
```

More details can be found in the *README.md* file available contained in the [**matlab**] folder of the GitHub repository.

## Appendix D Python

Decision trees for the machine learning core can be generated with Python through the the “*scikit*” package. Python scripts are available at [Python](#) both as a Jupyter notebook (\*.ipynb) and as a common Python script (\*.py). More details can be found in the *README.md* file available contained in the **[python]** folder of the GitHub repository.

## Appendix E Glossary

This section contains a glossary of terms used in machine learning. Most of the terms have been taken from <https://developers.google.com/machine-learning/glossary/>.

ARFF	An ARFF (attribute-relation file format) file is an ASCII text file that describes a list of instances sharing a set of attributes. ARFF files were developed by the Machine Learning Project at the Department of Computer Science of The University of Waikato for use with the Weka machine learning software.
Attribute/feature	An attribute is an aspect of an instance (for example, temperature, humidity). Attributes are often called features in machine learning. A special attribute is the class label that defines the class this instance belongs to (required for supervised learning).
Binary classification	A type of classification task that outputs one of two mutually exclusive classes. For example, a machine learning model that evaluates email messages and outputs either "spam" or "not spam" is a binary classifier.
Class	One of a set of enumerated target values for a label. For example, in a binary classification model that detects spam, the two classes are spam and not spam. In a multi-class classification model that identifies dog breeds, the classes would be poodle, beagle, pug, and so forth.
Classification model	A type of machine learning model for distinguishing among two or more discrete classes. For example, a natural language processing classification model could determine whether an input sentence was in French, Spanish, or Italian.
Classification threshold	A scalar-value criterion that is applied to a model's predicted score in order to separate the positive class from the negative class. Used when mapping logistic regression results to binary classification. For example, consider a logistic regression model that determines the probability of a given email message being spam. If the classification threshold is 0.9, then logistic regression values above 0.9 are classified as spam and those below 0.9 are classified as not spam.
Class-imbalanced dataset	A binary classification problem in which the labels for the two classes have significantly different frequencies. For example, a disease dataset in which 0.0001 of examples have positive labels and 0.9999 have negative labels is a class-imbalanced problem, but a football game predictor in which 0.51 of examples label one team winning and 0.49 label the other team winning is not a class-imbalanced problem.
Clipping	A technique for handling outliers. Specifically, reducing feature values that are greater than a set maximum value down to that maximum value. Also, increasing feature values that are less than a specific minimum value up to that minimum value.
Confusion matrix	An NxN table that summarizes how successful the classification model predictions were; that is, the correlation between the label and the model classification. One axis of a confusion matrix is the label that the model predicted, and the other axis is the actual label.
Cross-validation	A mechanism for estimating how well a model generalizes to new data by testing the model against one or more non-overlapping data subsets withheld from the training set.
Data analysis	Obtaining an understanding of data by considering samples, measurement, and visualization. Data analysis can be particularly useful when a dataset is first received, before one builds the first model. It is also crucial in understanding experiments and debugging problems with the system.
Data augmentation	Artificially boosting the range and number of training examples by transforming existing examples to create additional examples. For example, suppose images are one of your features, but your dataset doesn't contain enough image examples for the model to learn useful associations. Ideally, you'd add enough labeled images to your dataset to enable your model to train properly. If that's not possible, data augmentation can rotate, stretch, and reflect each image to produce many variants of the original picture, possibly yielding enough labeled data to enable excellent training.
Data set or dataset	A collection of examples.
Decision boundary	The separator between classes learned by a model in a binary class or multi-class classification problems.
Decision threshold	Synonym for classification threshold.
Decision tree	A model represented as a sequence of branching statements.
Discrete feature	A feature with a finite set of possible values. For example, a feature whose values may only be animal, vegetable, or mineral is a discrete (or categorical) feature. Contrast with continuous feature.
Discriminative model	A model that predicts labels from a set of one or more features. More formally, discriminative models define the conditional probability of an output given the features and weights.



Downsampling	Overloaded term that can mean either of the following: <ul style="list-style-type: none"> <li>Reducing the amount of information in a feature in order to train a model more efficiently.</li> <li>Training on a disproportionately low percentage of over-represented class examples in order to improve model training on under-represented classes.</li> </ul>
Dynamic model	A model that is trained online in a continuously updating fashion. That is, data is continuously entering the model.
Example	One row of a dataset. An example contains one or more features and possibly a label. See also labeled example and unlabeled example.
False negative (FN)	An example in which the model mistakenly predicted the negative class. For example, the model inferred that a particular email message was not spam (the negative class), but that email message actually was spam.
False positive (FP)	An example in which the model mistakenly predicted the positive class. For example, the model inferred that a particular email message was spam (the positive class), but that email message was actually not spam.
False positive rate (FPR)	The x-axis in an ROC curve. The false positive rate is defined as follows: False positive rate = false positives / (false positives + true negatives)
Feature	An input variable used in making predictions.
Feature engineering	The process of determining which features might be useful in training a model, and then converting raw data from log files and other sources into said features. Feature engineering is sometimes called feature extraction.
Feature extraction	Overloaded term having either of the following definitions: <ul style="list-style-type: none"> <li>Retrieving intermediate feature representations calculated by an unsupervised or pre-trained model for use in another model as input.</li> <li>Synonym for feature engineering.</li> </ul>
Feature set	The group of features your machine learning model trains on. For example, postal code, property size, and property condition might comprise a simple feature set for a model that predicts housing prices.
Generalization	Refers to your model's ability to make correct predictions on new, previously unseen data as opposed to the data used to train the model.
Ground truth	The correct answer. Reality. Since reality is often subjective, expert raters typically are the proxy for ground truth.
Heuristic	A quick solution to a problem, which may or may not be the best solution.
Imbalanced dataset	Synonym for class-imbalanced dataset.
Independently and identically distributed (i.i.d)	Data drawn from a distribution that doesn't change, and where each value drawn doesn't depend on values that have been drawn previously. An i.i.d. is the ideal gas of machine learning—a useful mathematical construct but almost never exactly found in the real world. For example, the distribution of visitors to a web page may be i.i.d. over a brief window of time; that is, the distribution doesn't change during that brief window and one person's visit is generally independent of another's visit. However, if you expand that window of time, seasonal differences in the web page's visitors may appear.
Interference	In machine learning, often refers to the process of making predictions by applying the trained model to unlabeled examples. In statistics, inference refers to the process of fitting the parameters of a distribution conditioned on some observed data.
Instance	Synonym for example.
Interpretability	The degree to which a model's predictions can be readily explained. Deep models are often non-interpretable; that is, a deep model's different layers can be hard to decipher. By contrast, linear regression models and wide models are typically far more interpretable.
J48	An open source Java implementation of the C4.5 algorithm
Label	In supervised learning, the "answer" or "result" portion of an example. Each example in a labeled dataset consists of one or more features and a label. For instance, in a housing dataset, the features might include the number of bedrooms, the number of bathrooms, and the age of the house, while the label might be the house's price. In a spam detection dataset, the features might include the subject line, the sender, and the email message itself, while the label would probably be either "spam" or "not spam."
Linear regression	A type of regression model that outputs a continuous value from a linear combination of input features.

Machine learning	A program or system that builds (trains) a predictive model from input data. The system uses the learned model to make useful predictions from new (never-before-seen) data drawn from the same distribution as the one used to train the model. Machine learning also refers to the field of study concerned with these programs or systems.
Majority class	The more common label in a class-imbalanced dataset. For example, given a dataset containing 99% non-spam labels and 1% spam labels, the non-spam labels are the majority class.
Matplotlib	An open-source Python 2D plotting library. matplotlib helps you visualize different aspects of machine learning.
Minority class	The less common label in a class-imbalanced dataset. For example, given a dataset containing 99% non-spam labels and 1% spam labels, the spam labels are the minority class.
ML	Abbreviation for machine learning.
Model training	The process of determining the best model.
Multi-class classification	Classification problems that distinguish among more than two classes. For example, there are approximately 128 species of maple trees, so a model that categorized maple tree species would be multi-class. Conversely, a model that divided emails into only two categories (spam and not spam) would be a binary classification model.
Multinomial classification	Synonym for multi-class classification.
Negative class	In binary classification, one class is termed positive and the other is termed negative. The positive class is the thing we're looking for and the negative class is the other possibility. For example, the negative class in a medical test might be "not tumor." The negative class in an email classifier might be "not spam." See also positive class.
Neural network	A model that, taking inspiration from the brain, is composed of layers (at least one of which is hidden) consisting of simple connected units or neurons followed by nonlinearities.
Node (decision tree)	A "test" on an attribute.
Noise	Broadly speaking, anything that obscures the signal in a dataset. Noise can be introduced into data in a variety of ways. For example: <ul style="list-style-type: none"> <li>• Human raters make mistakes in labeling.</li> <li>• Humans and instruments mis-record or omit feature values.</li> </ul>
Normalization	The process of converting an actual range of values into a standard range of values, typically -1 to +1 or 0 to 1. For example, suppose the natural range of a certain feature is 800 to 6,000. Through subtraction and division, you can normalize those values into the range -1 to +1.  See also scaling.
Numerical data	Features represented as integers or real-valued numbers.
Outliers	Values distant from most other values. In machine learning, any of the following are outliers: <ul style="list-style-type: none"> <li>• Weights with high absolute values.</li> <li>• Predicted values relatively far away from the actual values.</li> <li>• Input data whose values are more than roughly 3 standard deviations from the mean.</li> </ul> Outliers often cause problems in model training. Clipping is one way of managing outliers.
Overfitting	Creating a model that matches the training data so closely that the model fails to make correct predictions on new data.
Parameter	A variable of a model that the ML system trains on its own.
Performance	Overloaded term with the following meanings: <ul style="list-style-type: none"> <li>• The traditional meaning within software engineering. Namely: How fast (or efficiently) does this piece of software run?</li> <li>• The meaning within ML. Here, performance answers the following question: How correct is this model? That is, how good are the model's predictions?</li> </ul>
Positive class	In binary classification, the two possible classes are labeled as positive and negative. The positive outcome is the thing we're testing for. (Admittedly, we're simultaneously testing for both outcomes, but play along.) For example, the positive class in a medical test might be "tumor." The positive class in an email classifier might be "spam."  Contrast with negative class.

Precision	A metric for classification models. Precision identifies the frequency with which a model was correct when predicting the positive class. That is:  Precision = true positives / (true positives + false positives)
Prediction	A model's output when provided with an input example.
Pre-trained model	Models or model components that have been already been trained.
Proxy labels	Data used to approximate labels not directly available in a dataset.  For example, suppose you want "is it raining?" to be a Boolean label for your dataset, but the dataset doesn't contain rain data. If photographs are available, you might establish pictures of people carrying umbrellas as a proxy label for "is it raining"? However, proxy labels may distort results. For example, in some places, it may be more common to carry umbrellas to protect against sun than the rain.
Rater	A human who provides labels in examples. Sometimes called an "annotator."
Recall	A metric for classification models that answers the following question:  "Out of all the possible positive labels, how many did the model correctly identify?"  That is:  Recall = true positives / (true positives + false negatives)
Regression model	A type of model that outputs continuous (typically, floating-point) values. Compare with classification models, which output discrete values, such as "day lily" or "tiger lily."
Reinforcement learning	A machine learning approach to maximize an ultimate reward through feedback (rewards and punishments) after a sequence of actions. For example, the ultimate reward of most games is victory. Reinforcement learning systems can become expert at playing complex games by evaluating sequences of previous game moves that ultimately led to wins and sequences that ultimately led to losses.
Representation	The process of mapping data to useful features.
ROC curve	ROC = receiver operating characteristic  A curve of true positive rate vs. false positive rate at different classification thresholds.
Scaling	A commonly used practice in feature engineering to tame a feature's range of values to match the range of other features in the dataset. For example, suppose that you want all floating-point features in the dataset to have a range of 0 to 1. Given a particular feature's range of 0 to 500, you could scale that feature by dividing each value by 500.  See also normalization.
Scikit-learn	A popular open-source ML platform. See <a href="http://www.scikit-learn.org">www.scikit-learn.org</a> .
Scoring	The part of a recommendation system that provides a value or ranking for each item produced by the candidate generation phase.
Semi-supervised learning	Training a model on data where some of the training examples have labels but others don't. One technique for semi-supervised learning is to infer labels for the unlabeled examples, and then to train on the inferred labels to create a new model. Semi-supervised learning can be useful if labels are expensive to obtain but unlabeled examples are plentiful.
Sequence model	A model whose inputs have a sequential dependence. For example, predicting the next video watched from a sequence of previously watched videos.
Serving	A synonym for inferring.
Static model	A model that is trained offline.
Stationarity	A property of data in a dataset, in which the data distribution stays constant across one or more dimensions. Most commonly, that dimension is time, meaning that data exhibiting stationarity doesn't change over time. For example, data that exhibits stationarity doesn't change from September to December.
Supervised machine learning	Training a model from input data and its corresponding labels. Supervised machine learning is analogous to a student learning a subject by studying a set of questions and their corresponding answers. After mastering the mapping between questions and answers, the student can then provide answers to new (never-before-seen) questions on the same topic.  Compare with unsupervised machine learning.
Target	Synonym for label.
Training	The process of determining the ideal parameters comprising a model.

Training set	<p>The subset of the dataset used to train a model.</p> <p>Contrast with validation set and test set.</p>
True negative (TN)	<p>An example in which the model correctly predicted the negative class. For example, the model inferred that a particular email message was not spam, and that email message really was not spam.</p>
True positive (TP)	<p>An example in which the model correctly predicted the positive class. For example, the model inferred that a particular email message was spam, and that email message really was spam.</p>
True positive rate (TPR)	<p>Synonym for recall. That is:</p> $\text{True positive rate} = \frac{\text{true positives}}{\text{true positives} + \text{false negatives}}$ <p>True positive rate is the y-axis in an ROC curve.</p>
Underfitting	<p>Producing a model with poor predictive ability because the model hasn't captured the complexity of the training data. Many problems can cause underfitting, including:</p> <ul style="list-style-type: none"> <li>• Training on the wrong set of features.</li> <li>• Training for too few epochs or at too low a learning rate.</li> <li>• Training with too high a regularization rate.</li> <li>• Providing too few hidden layers in a deep neural network.</li> </ul>
Unlabeled example	<p>An example that contains features but no label. Unlabeled examples are the input to inference. In semi-supervised and unsupervised learning, unlabeled examples are used during training.</p>
Unsupervised machine learning	<p>Training a model to find patterns in a dataset, typically an unlabeled dataset.</p> <p>The most common use of unsupervised machine learning is to cluster data into groups of similar examples. For example, an unsupervised machine learning algorithm can cluster songs together based on various properties of the music. The resulting clusters can become an input to other machine learning algorithms (for example, to a music recommendation service). Clustering can be helpful in domains where true labels are hard to obtain. For example, in domains such as anti-abuse and fraud, clusters can help humans better understand the data.</p> <p>Another example of unsupervised machine learning is principal component analysis (PCA). For example, applying PCA on a dataset containing the contents of millions of shopping carts might reveal that shopping carts containing lemons frequently also contain antacids.</p> <p>Compare with supervised machine learning.</p>
Validation	<p>A process used, as part of training, to evaluate the quality of a machine learning model using the validation set. Because the validation set is disjoint from the training set, validation helps ensure that the model's performance generalizes beyond the training set.</p> <p>Contrast with test set.</p>
Validation set	<p>A subset of the dataset—disjoint from the training set—used in validation.</p> <p>Contrast with training set and test set.</p>
Weka	<p>A collection of machine learning algorithms for data mining tasks. It contains tools for data preparation, classification, regression, clustering, association rules mining, and visualization.</p>

## Revision history

**Table 13. Document revision history**

Date	Version	Changes
08-Apr-2025	1	Initial release

## Contents

<b>1</b>	<b>Machine learning core in the IIS2DULPX</b>	<b>2</b>
1.1	Inputs	4
1.2	Filters	6
1.2.1	Filter coefficients	7
1.3	Features	9
1.3.1	Mean	10
1.3.2	Variance	10
1.3.3	Energy	10
1.3.4	Peak-to-peak	10
1.3.5	Zero-crossing	11
1.3.6	Positive zero-crossing	11
1.3.7	Negative zero-crossing	12
1.3.8	Peak detector	12
1.3.9	Positive peak detector	13
1.3.10	Negative peak detector	13
1.3.11	Minimum	14
1.3.12	Maximum	14
1.3.13	Recursive features	15
1.3.14	Selection of features	16
1.4	Decision tree	19
1.4.1	Decision tree limitations in the IIS2DULPX	20
1.5	Metaclassifier	21
1.5.1	Metaclassifier limitations in the IIS2DULPX	21
1.6	Finite state machine interface	22
1.7	MLC data in FIFO	23
<b>2</b>	<b>Machine learning core tools</b>	<b>24</b>
2.1	MEMS Studio	24
2.2	Decision tree generation	27
2.3	Configuration procedure	29
<b>Appendix A</b>	<b>Weka</b>	<b>35</b>
<b>Appendix B</b>	<b>RapidMiner</b>	<b>42</b>
<b>Appendix C</b>	<b>MATLAB®</b>	<b>46</b>
<b>Appendix D</b>	<b>Python</b>	<b>47</b>
<b>Appendix E</b>	<b>Glossary</b>	<b>48</b>
	<b>Revision history</b>	<b>53</b>

---

List of tables .....	56
List of figures.....	57

## List of tables

<b>Table 1.</b>	Machine learning core output data rates . . . . .	2
<b>Table 2.</b>	Filter coefficients . . . . .	6
<b>Table 3.</b>	Examples of filter coefficients . . . . .	7
<b>Table 4.</b>	Features . . . . .	9
<b>Table 5.</b>	First group of recursive features. . . . .	15
<b>Table 6.</b>	Second group of recursive features . . . . .	16
<b>Table 7.</b>	Decision tree results. . . . .	20
<b>Table 8.</b>	Decision tree interrupts. . . . .	20
<b>Table 9.</b>	Decision tree limitations in the IIS2DULPX . . . . .	20
<b>Table 10.</b>	Metaclassifier example . . . . .	21
<b>Table 11.</b>	Metaclassifier limitations in the IIS2DULPX . . . . .	21
<b>Table 12.</b>	Data in FIFO . . . . .	23
<b>Table 13.</b>	Document revision history . . . . .	53



## List of figures

Figure 1.	Machine learning core supervised approach . . . . .	1
Figure 2.	Machine learning core in the IIS2DULPX . . . . .	2
Figure 3.	Machine learning core blocks . . . . .	3
Figure 4.	MLC inputs (accelerometer) . . . . .	4
Figure 5.	Filter basic element . . . . .	6
Figure 6.	Peak-to-peak . . . . .	10
Figure 7.	Zero-crossing . . . . .	11
Figure 8.	Positive zero-crossing . . . . .	11
Figure 9.	Negative zero-crossing . . . . .	12
Figure 10.	Peak detector . . . . .	12
Figure 11.	Positive peak detector . . . . .	13
Figure 12.	Negative peak detector . . . . .	13
Figure 13.	Minimum . . . . .	14
Figure 14.	Maximum . . . . .	14
Figure 15.	Distribution of single feature for three different classes . . . . .	17
Figure 16.	Visualization of two features and two classes . . . . .	17
Figure 17.	Ranking from automated output tool . . . . .	18
Figure 18.	Decision tree node . . . . .	19
Figure 19.	Identifiers for filters and features . . . . .	23
Figure 20.	MEMS Studio . . . . .	25
Figure 21.	Machine learning core tool - data patterns . . . . .	25
Figure 22.	Machine learning core tool - configuration . . . . .	26
Figure 23.	Decision tree generation in MEMS Studio . . . . .	27
Figure 24.	Weka preprocess . . . . .	28
Figure 25.	Weka classify . . . . .	28
Figure 26.	Decision tree format . . . . .	29
Figure 27.	Configuration procedure . . . . .	30
Figure 28.	Assigning a result to a data pattern . . . . .	30
Figure 29.	Configuration of machine learning core . . . . .	31
Figure 30.	Configuration of filters . . . . .	31
Figure 31.	Configuration of features . . . . .	31
Figure 32.	ARFF generation . . . . .	31
Figure 33.	ARFF file . . . . .	32
Figure 34.	Configuration of results and decision tree . . . . .	32
Figure 35.	Metaclassifier and device configuration . . . . .	33
Figure 36.	MEMS Studio Load/Save configuration . . . . .	33
Figure 37.	MEMS Studio Data Monitor . . . . .	34
Figure 38.	MEMS Studio - machine learning core source registers . . . . .	34
Figure 39.	ARFF example . . . . .	35
Figure 40.	Weka GUI Chooser . . . . .	36
Figure 41.	Weka Explorer . . . . .	37
Figure 42.	Weka Explorer - Attributes . . . . .	38
Figure 43.	Weka Classify . . . . .	39
Figure 44.	Weka Classify J48 . . . . .	39
Figure 45.	Weka J48 classifier parameters . . . . .	40
Figure 46.	Correctly classified instances . . . . .	41
Figure 47.	Confusion matrix . . . . .	41
Figure 48.	RapidMiner Studio - Open File . . . . .	42
Figure 49.	RapidMiner Studio - Read ARFF . . . . .	43
Figure 50.	RapidMiner Studio - Set Role . . . . .	43
Figure 51.	RapidMiner Studio - Decision Tree operator . . . . .	44
Figure 52.	RapidMiner Studio - Decision Tree graph . . . . .	44
Figure 53.	RapidMiner Studio - Decision Tree description . . . . .	45

**IMPORTANT NOTICE – READ CAREFULLY**

STMicroelectronics NV and its subsidiaries ("ST") reserve the right to make changes, corrections, enhancements, modifications, and improvements to ST products and/or to this document at any time without notice. Purchasers should obtain the latest relevant information on ST products before placing orders. ST products are sold pursuant to ST's terms and conditions of sale in place at the time of order acknowledgment.

Purchasers are solely responsible for the choice, selection, and use of ST products and ST assumes no liability for application assistance or the design of purchasers' products.

No license, express or implied, to any intellectual property right is granted by ST herein.

Resale of ST products with provisions different from the information set forth herein shall void any warranty granted by ST for such product.

ST and the ST logo are trademarks of ST. For additional information about ST trademarks, refer to [www.st.com/trademarks](http://www.st.com/trademarks). All other product or service names are the property of their respective owners.

Information in this document supersedes and replaces information previously supplied in any prior versions of this document.

© 2025 STMicroelectronics – All rights reserved