
BlueNRG-MS development kits

Introduction

This document describes the BlueNRG-MS development kits and related hardware and software components. The BlueNRG-MS is a very low power Bluetooth® low energy (BLE) single-mode network processor, compliant with Bluetooth specifications core. The BlueNRG-MS can support multiple roles simultaneously.

The following BlueNRG-MS kits are available:

- BlueNRG-MS development platform (order code: [STEVAL-IDB005V1](#))
- BlueNRG-MS daughterboard (order code: [STEVAL-IDB005V1D](#))
- BlueNRG-MS USB dongle (order code: [STEVAL-IDB006V1](#))

1 Getting started

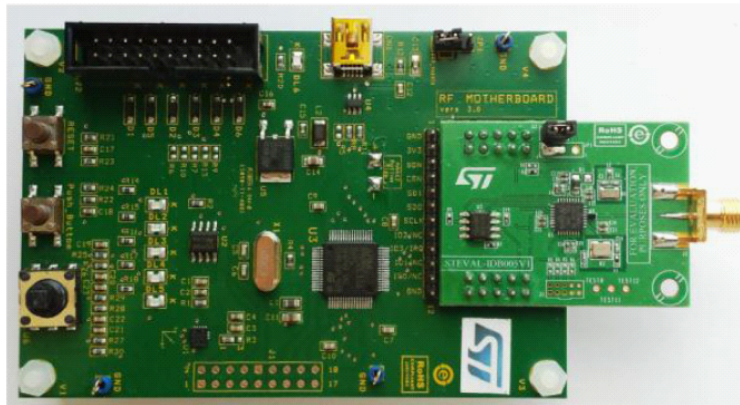
This section describes all the software and hardware requirements for installing the BlueNRG DK SW package (STSW-BLUENRG-DK) and using the related HW, SW resources.

1.1 STEVAL-IDB005V1 kit contents

This kit is composed of the following items:

- 1 development motherboard
- 1 BlueNRG-MS daughterboard
- 1 2.4 GHz Bluetooth antenna
- 1 USB cable

Figure 1. BlueNRG-MS kit motherboard with the STEVAL-IDB005V1 daughterboard connected

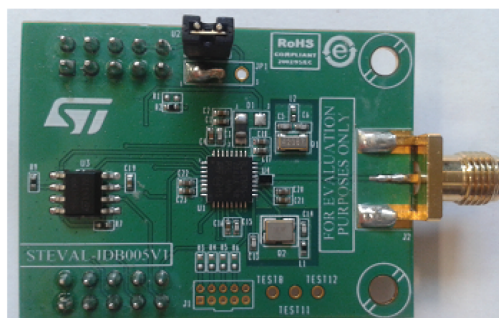


1.2 STEVAL-IDB005V1D kit contents

This kit is composed of the following items:

- BlueNRG-MS daughterboard

Figure 2. STEVAL-IDB005V1D BlueNRG-MS daughterboard

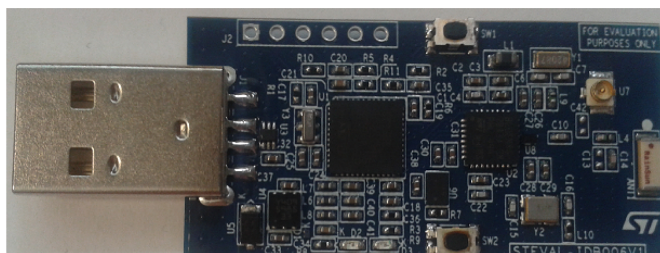


Note: The STEVAL-IDB005V1D BlueNRG-MS daughterboard is identical to the BlueNRG-MS daughterboard available within the STEVAL-IDB005V1 kit (refer to [Section 1.1 STEVAL-IDB005V1 kit contents](#))

1.3 STEVAL-IDB006V1 kit contents

This kit is composed of 1 USB dongle.

Figure 3. STEVAL-IDB006V1 BlueNRG-MS USB dongle



1.4 System requirements

The BlueNRG DK SW package (STSW-BLUENRG-DK) has the following minimum requirements:

- PC with Intel® or AMD® processor running one of the following Microsoft® operating systems:
 - Windows XP SP3
 - Windows Vista
 - Windows 7
- At least 128 Mb of RAM
- 2 USB ports
- 40 Mb of hard disk space available
- Adobe Acrobat Reader 6.0 or later

1.5 BlueNRG-MS development kit setup

1. Extract the content of the BlueNRG_DK_-x.x.x-Setup.zip file into a temporary directory
2. Launch the BlueNRG-DK-x.x.x-Setup.exe file and follow the on-screen instructions.

Note: EWARM Compiler 7.40.3 or later is required for building the BlueNRG_DK_x.x.x demonstration applications

Note: BlueNRG DK software package supports both BlueNRG and BlueNRG-MS devices

2 Hardware description

The following sections describe the components of the kits.

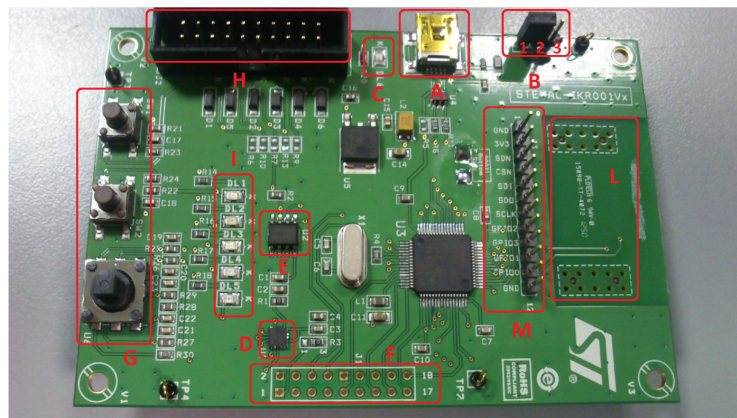
2.1 STEVAL-IDB005V1 motherboard

The motherboard included in the development kit allows testing of the functionality of the BlueNRG-MS processor. The STM32L microcontroller on the board can also be programmed, so the board can be used to develop applications using the BlueNRG-MS. A connector on the motherboard ([Figure 1. BlueNRG-MS kit motherboard with the STEVAL-IDB005V1 daughterboard connected](#)) allows access to the JTAG interface for programming and debugging. The board can be powered through a mini-USB connector that can also be used for I/O interaction with a USB Host. The board includes sensors, and buttons and a joystick for user interaction. The RF daughterboard can be easily connected through a dedicated interface.

This is a list of some of the features that are available on the boards:

- STM32L151RBT6 64-pin microcontroller
- Mini USB connector for power supply and I/O
- JTAG connector
- RF daughterboard interface
- One RESET button and one USER button
- One LIS3DH accelerometer
- One STLM75 temperature sensor
- One joystick
- 5 LEDs
- One PWR LED
- One battery holder for 2 AAA batteries
- One row of test points on the interface to the RF daughterboard

Figure 4. Motherboard for the BlueNRG-MS development kit



2.1.1 Microcontroller and connections

The board features an STM32L151RB microcontroller, which is an ultra low-power microcontroller with 128 KB of Flash memory, 16 KB of RAM, 32-bit core ARM cortex-M3, 4 KB of data EEPROM, RTC, LCD, timers, USART, I2C, SPI, ADC, DAC and comparators.

The microcontroller is connected to various components such as buttons, LEDs and connectors for external circuitry. The following table shows what functionality is available on each microcontroller pin.

Table 1. MCU pin description versus board function

Pin name	Pin	Board function							
		LEDs	DB conn.	Buttons	Acceler.	Temp. sensor	USB	JTAG	EXT. conn.
VLCD	1								
PC13	2		DB_SDN_RST						
PC14	3								3
PC15	4								5
OSC_IN	5								
OSC_OUT	6								
NRST	7			RESET					7
PC0	8	LED1							
PC1	9	LED2							
PC2	10		DB_PIN3						
PC3	11								9
VSSA	12								
VDDA	13								
PA0	14								11
PA1	15								13
PA2	16								15
PA3	17								17
VSS_4	18								
VDD_4	19								
PA4	20				SPI1_NSS				
PA5	21				SPI1_SCK				
PA6	22				SPI1_MISO				
PA7	23				SPI1_MOSI				
PC4	24	LED4							
PC5	25	LED5							
PB0	26			JOY_DOWN					
PB1	27			JOY_RIGHT					
PB2	28								18
PB10	29				INT1				
PB11	30				INT2				
VSS_1	31								
VDD_1	32								
PB12	33		DB_CSN ⁽¹⁾						

Pin name	Pin	Board function							
		LEDs	DB conn.	Buttons	Acceler.	Temp. sensor	USB	JTAG	EXT. conn.
PB13	34		DB_SCLK ⁽¹⁾						
PB14	35		DB_SDO ⁽¹⁾						
PB15	36		DB_SDI ⁽¹⁾						
PB15	37			PUSH_BTN					
PC7	38		DB_IO0 ⁽¹⁾						
PC8	39		DB_IO1 ⁽¹⁾						
PC9	40		DB_IO2 ⁽¹⁾						
PA8	41			JOY_LEFT					
PA9	42			JOY_CENTER					
PA10	43			JOY_UP					
PA11	44						USB_DM		
PA12	45						USB_DP		
PA13	46							JTMS	16
VSS_2	47								
VDD_2	48								
PA14	49							JTCK	14
PA15	50							JTDI	12
PC10	51		DB_IO3_IRQ ⁽¹⁾						
PC11	52		DB_PIN1						
PC12	53		DB_PIN2						
PD2	54	LED3							
PB3	55							JTDO	10
PB4	56							JNTRST	8
PB5	57					TSEN_INT			
PB6	58					I2C1_SCL			
PB7	59					I2C1_SDA			
BOOT0	60								
PB8	61								4
PB9	62								6
VSS_3	63								
VDD_3	64								

1. These lines are also available on the test point row

2.1.2

Power

The board can be powered either by the mini USB connector CN1 (A in [Figure 4. Motherboard for the BlueNRG-MS development kit](#)) or by 2 AAA batteries. To power the board through USB bus, jumper JP1 must be in position

1-2, as in [Figure 4. Motherboard for the BlueNRG-MS development kit \(B\)](#). To power the board using batteries, 2 AAA batteries must be inserted in the battery holder at the rear of the board, and jumper JP1 set to position 2-3. When the board is powered, the green LED DL6 is on (C).

If needed, the board can be powered by an external DC power supply. Connect the positive output of the power supply to the central pin of JP1 (pin 2) and ground to one of the four test point connectors on the motherboard (TP1, TP2, TP3 and TP4).

2.1.3 Sensors

Two sensors are available on the motherboard:

- LIS3DH, an ultra-low power high performance three-axis linear accelerometer (D in [Figure 4. Motherboard for the BlueNRG-MS development kit](#)). The sensor is connected to the STM32L through the SPI interface. Two lines for interrupts are also connected.
- STLM75, a high precision digital CMOS temperature sensor, with I²C interface (E in [Figure 4. Motherboard for the BlueNRG-MS development kit](#)). The pin for the alarm function is connected to one of the STM32L GPIOs.

2.1.4 Extension connector

There is the possibility to solder a connector on the motherboard to extend its functionality (F in [Figure 4. Motherboard for the BlueNRG-MS development kit](#)). 16 pins of the microcontroller are connected to this expansion slot ([Table 1. MCU pin description versus board function](#)).

2.1.5 Push-buttons and joystick

For user interaction the board has two buttons. One is to reset the microcontroller, while the other is available to the application. There is also a digital joystick with 4 possible positions (left, right, up, down) (G in [Figure 4. Motherboard for the BlueNRG-MS development kit](#)).

2.1.6 JTAG connector

A JTAG connector on the board (H in [Figure 4. Motherboard for the BlueNRG-MS development kit](#)) allows the programming and debugging of the STM32L microcontroller on board(a), using an in-circuit debugger and programmer such as the ST-LINK/V2.

2.1.7 LEDs

Five LEDs are available (I in [Figure 4. Motherboard for the BlueNRG-MS development kit](#)):

- DL1: green
- DL2: orange
- DL3: red
- DL4: blue
- DL5: yellow

2.1.8 Daughterboard interface

The main feature of the motherboard is the capability to control an external board, connected to the J4 and J5 connectors (L in [Figure 4. Motherboard for the BlueNRG-MS development kit](#)). [Table 1. MCU pin description versus board function](#) shows which pins of the microcontroller are connected to the daughterboard.

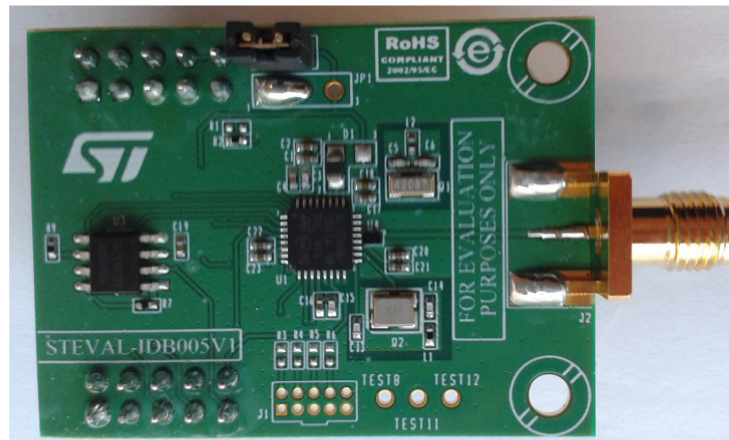
Some of the lines are connected also to a row of test points (M).

Note: *The STM32L is preprogrammed with a DFU firmware that allows the downloading of a firmware image without the use of a programmer. If an user accidentally erases DFU firmware, he can reprogram it through STLink using the hex image DFU_Bootloader.hex available on BlueNRG-MS DK SW package, firmware folder.*

2.2 BlueNRG-MS daughterboard

The BlueNRG-MS daughterboard ([Figure 5. BlueNRG-MS daughterboard](#)) included in the development kit is a small circuit board to be connected to the main board. It contains the BlueNRG-MS network processor (in a QFN32 package), an SMA antenna connector, discrete passive components for RF matching and balun, and small number of additional components required by the BlueNRG-MS for proper operation (see the schematic diagram in [Figure 17. STEVAL-IDB005V1 MCU](#)).

Figure 5. BlueNRG-MS daughterboard



The main features of the BlueNRG-MS daughterboard are:

- BlueNRG-MS low power network processor for Bluetooth low energy (BLE), with embedded host stack
- High frequency 16 MHz crystal
- Low frequency 32 kHz crystal for the lowest power consumption
- Integrated balun and harmonic filter
- SMA connector

The daughterboard is also equipped with a discrete inductor for the integrated highefficiency DC-DC converter, for best-in-class power consumption. It is still possible to disable the DC-DC converter. In this case the following changes must be performed on the daughterboard (see [Figure 17. STEVAL-IDB005V1 MCU](#)):

- Remove inductor from solder pads 1 and 2 of D1
- Place a 0 ohm resistor between pads 1 and 3
- Move resistor on R2 to R1

For proper operation, jumpers must be set as indicated in [Figure 5. BlueNRG-MS daughterboard](#).

The following tables show the connections between the daughterboard and the main board.

Table 2. Connections between BlueNRG-MS board and motherboard on left connector

Pin	J4 motherboard	J3 daughterboard
1	DB_PIN1	NC
2	3V3	3V3
3	DB_PIN3	NC
4	NC	NC
5	GND	GND
6	DB_PIN2	nS
7	GND	GND
8	3V3	U2 pin 1
9	DB_SDN_RST	RST
10	3V3	U2 pin 1

Table 3. Connections between BlueNRG-MS board and motherboard on right connector

Pin	J5 motherboard	J4 daughterboard
1	GND	GND
2	GND	GND
3	DB_CSN	CSN
4	DB_IO3_IRQ	IRQ
5	DB_SCLK	CLK
6	DB_IO2	NC
7	DB_SDI	MOSI
8	DB_IO1	NC
9	DB_SDO	MISO
10	DB_IO0	NC

2.2.1 Current measurements

To monitor power consumption of the entire BlueNRG-MS daughterboard, remove the jumper from U2 and insert an ammeter between pins 1 and 2 of the connector. Since power consumption of the BlueNRG-MS during most operation time is very low, an accurate instrument in the range of few microamps may be required.

2.2.2 Hardware setup

1. Plug the BlueNRG-MS daughterboard into J4 and J5 connectors as in [Figure 1. BlueNRG-MS kit motherboard with the STEVAL-IDB005V1 daughterboard connected](#)
2. Ensure the jumper configuration on the daughterboard is as in [Figure 1. BlueNRG-MS kit motherboard with the STEVAL-IDB005V1 daughterboard connected](#)
3. Connect the motherboard to the PC with an USB cable (through connector CN1)
4. Verify the PWR LED lights is on

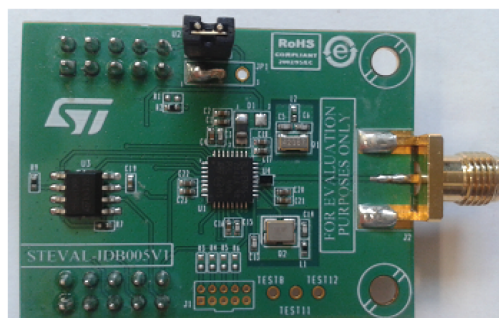
2.2.3 STM32L preprogrammed application

The STM32L on STEVAL-IDB005V1 motherboard is preprogrammed with the sensor demo application when the kits components are assembled (refer to [Section 4 BlueNRG-MS sensor profile demo](#) for the application description).

2.3 STEVAL-IDB005V1D Kit

The STEVAL-IDB005V1D kit is a standalone RF daughterboard which features the BlueNRG-MS device, an SMA connector for an antenna or measuring instruments and an SPI connector for external microcontroller. It can be connected to the STM32L motherboards available with the STEVAL-IDB002V1 and STEVAL-IDB005V1 kits. The STEVAL-IDB005V1D BlueNRG-MS daughterboard is identical to the BlueNRG-MS daughterboard available within the STEVAL-IDB005V1 kit (refer to [Section 2.2 BlueNRG-MS daughterboard](#)).

Figure 6. STEVAL-IDB005V1D BlueNRG-MS daughterboard



2.4 STEVAL-IDB006V1 USB dongle

The BlueNRG-MS USB dongle allows users to easily add BLE functionalities to their PC by plugging the dongle into a USB port. The on-board STM32L microcontroller can also be programmed, so the board can be used to develop applications that use the BlueNRG-MS.

The board can be powered through the USB connector, which can also be used for I/O interaction with a USB host. The board also has two buttons and two LEDs for user interaction.

Below is a list of some of the main features that are available on the board (see [Figure 3. STEVAL-IDB006V1 BlueNRG-MS USB dongle](#)):

- BlueNRG-MS network coprocessor
- STM32L151CUB6 48-pin microcontroller
- USB connector for power supply and I/O
- One row of pins with SWD interface
- Chip antenna
- Two user buttons (SW1, SW2)
- Two LEDs (D2, D3)
- BALF-NRG-01D3 integrated balun

2.4.1 Microcontroller and connections

The board utilizes an STM32L151CUB6, which is an ultra low-power microcontroller with 128 KB of Flash memory, 16 KB of RAM, 32-bit core ARM cortex-M3, 4 KB of data EEPROM, RTC, timers, USART, I2C, SPI, ADC, DAC and comparators. The microcontroller is connected to various components such as buttons, LEDs and connectors for external circuitry. The following table shows which functionality is available on each microcontroller pin.

Table 4. MCU pin description versus board function

Pin name	Pin num.	Board function				
		LEDs	BlueNRG	Buttons	USB	SWD
VLCD	1		VBAT			
PC13	2					
PC14	3					
PC15	4					
OSC_IN	5					
OSC_OUT	6					
NRST	7					
VSS_A	8					
VDD_A	9					
PA0	10					
PA1	11			Button SW2		
PA2	12					
PA3	13					
PA4	14					
PA5	15					
PA6	16					
PA7	17					
PB0	18	Led D2				

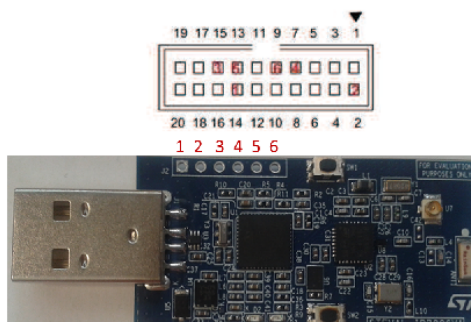
Pin name	Pin num.	Board function				
		LEDs	BlueNRG	Buttons	USB	SWD
PB1	19	Led D3				
PB2	20			Button SW1		
PB10	21		BlueNRG_IRQ			
PB11	22					
VSS1	23					
VDD1	24					
PB12	25		SPI2_CS			
PB13	26		SPI2_CLK			
PB14	27		SPI2_MISO			
PB15	28		SPI2_MOSI			
PA8	29					
PA9	30		EEPROM_CS			
PA10	31					
PA11	32				USB_DM	
PA12	33				USB_DP	
PA13	34					SWDIO
VSS2	35					
VDD2	36					
PA14	37					SWCLK
PA15	38					
PB3	39					SWO
PB4	40					
PB5	41					
PB6	42					
PB7	43					
BOOT0	44					
PB8	45					
PB9	46					
VSS_3	47					
VDD_4	48					

2.4.2

SWD interface

The SWD interface is available through the J2 pins. The SWD interface allows programming and debugging of the STM32L microcontroller on the board, using an in-circuit debugger and programmer like the ST-LINK/V2. In [Figure 7. SWD connection scheme with ST-LINK/V2](#) the connection scheme illustrating how to connect the ST-LINK/V2 with the board pins is shown.

Figure 7. SWD connection scheme with ST-LINK/V2



The signals available on the STEVAL-IDB006V1 are:

1. GND
2. VDD
3. nRESET
4. SWDIO
5. SWO/TRACE
6. SWCLK

The connection to the ST-LINK/V2 interface is given in the table below, as shown in [Figure 7. SWD connection scheme with ST-LINK/V2](#):

Table 5. SWD connection

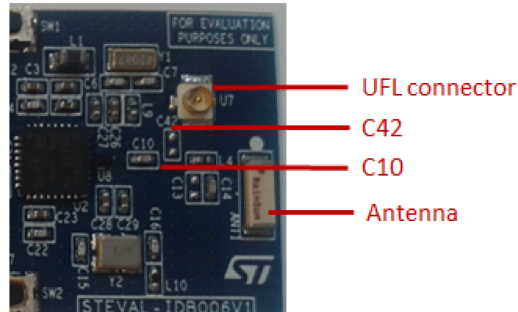
Signal name	STEVAL-IDB006V1 pin number	ST-LINK/V2 pin number
GND	1	14/6
VDD	2	2/1
nRESET	3	15
SWDIO	4	7
SWO/TRACE	5	13
SWCLK	6	9

2.4.3 RF connector

The STEVAL-IDB006V1 provides two different RF connections: antenna (chip antenna, default configuration) and UFL connector. Although the default configuration allows communication on air, it can be useful to switch to the UFL connector in order to connect the STEVAL-IDB006V1 to RF equipment such as a spectrum analyzer or RF signal generator.

To switch from antenna to UFL connector, capacitor C10 must be removed and capacitor C42 must be soldered. To restore the default configuration and use the antenna, capacitor C42 must be removed and capacitor C10 must be soldered. Both capacitors C10 and C42 have the same value: 56 pF. In [Figure 8. RF connector scheme](#), the two pads for C10 and C42 are shown together with the chip antenna and UFL connector.

Figure 8. RF connector scheme



2.4.4 Push-buttons

For user interaction the board has two buttons, both available to the application:

- SW1
- SW2

Note: SW1 is the DFU button. The BlueNRG-MS USB dongle is preprogrammed with a DFU application allowing upgrades to the STM32L firmware image through USB and using the BlueNRG GUI. To activate the DFU, press button SW1 and plug the BlueNRG-MS USB dongle into a PC USB port.

2.4.5 User LEDs

Two LEDs are available:

- D2: red
- D3: orange

Note: When DFU is activated, LED D3 is blinking

2.4.6 BALF-NRG-01D3 integrated balun

BALF-NRG-01D3 integrated balun is an ultra miniature balun which integrates a matching network and harmonics filter.

2.4.7 Hardware setup

Plug the BlueNRG USB dongle into a PC USB port.

2.4.8 STM32L preprogrammed application

The STM32L on the STEVAL-IDB006V1 motherboard is preprogrammed with the BlueNRG_VCOM_x_x.hex application when the kit components are assembled.

3 Programming with BlueNRG-MS network processor

The BlueNRG-MS provides a high level interface to control its operation. This interface is called ACI (application-controller interface). The ACI is implemented as an extension to the standard Bluetooth HCI interface. Since BlueNRG-MS is a network processor, the stack runs inside the device itself. Hence, no library is required on the external microcontroller, except for profiles and all the functions needed to communicate with the BlueNRG-MS SPI interface.

The development kit software includes sample code that shows how to configure BlueNRGMS and send commands or parsing events. The source library is called simple BlueNRGMS HCI to distinguish it from the library for the complete profile framework (not present in the software development kit). This library is able to handle multiple profiles at the same time and supports several Bluetooth GATT-based profiles for BlueNRG-MS. Documentation on the ACI is provided in a separate document.

Figure 9. Profile framework structure

Proximity	FindMe	HOGP
Basic profile framework					

3.1 Requirements

In order to communicate with BlueNRG-MS network processor very few resources are needed by the main processor. These are listed below:

- SPI interface
- Platform-dependent code to write/read to/from SPI
- A timer to handle SPI timeouts or to run Bluetooth LE Profiles

Minimum requirements in terms of Flash and RAM space largely depend on the functionality needed by the application, on the microprocessor that will run the code and on the compiler toolchain used to build the firmware.

3.2 Software directory structure

The Projects folder contains some sample code that can be used on the application processor to control the BlueNRG-MS. Platform-dependent code is also provided for STM32L1 platforms. The example project provided in the package will run “as is” on the development kit.

The files are organized using the following folder structure:

- Drivers. It contains all the STM32L1xx Cube library framework files
- Middlewares\ST\STM32_BlueNRG\SimpleBlueNRG_HCI. Contains the code that is used to send ACI commands to the BlueNRG-MS network processor. It contains also definitions of BlueNRG-MS events
- platform. Contains all the platform-dependent files (only on STM32L1xx standard library framework). These can be taken as an example to build applications that can be run on other platforms.
- Project_Cube, Projects_STD_Library. Contains source based, respectively, on STM32L1xx Cube library and on STM32L1xx standard library frameworks, that can be used as an example to build other applications that will use the Bluetooth technology with the BlueNRG-MS. Project files for IAR embedded workbench are also available.

4 BlueNRG-MS sensor profile demo

The software development kit contains an example, which implements a proprietary Bluetooth profile: the sensor profile. This example is useful for building new profiles and applications that use the BlueNRG-MS network processor. This GATT profile is not compliant to any existing specification. The purpose of this project is simply to show how to implement a given profile.

This profile exposes two services: acceleration service and environmental service.

[Figure 10. BlueNRG-MS sensor demo GATT database](#) shows the whole GATT database, including the GATT and GAP services that are automatically added by the stack.

One of the acceleration service's characteristics has been called free-fall characteristic. This characteristic cannot be read or written but can be notified. The application will send a notification on this characteristic (with value equal to 0x01) if a free-fall condition has been detected by the LIS3DH MEMS sensor (the condition is detected if the acceleration on the 3 axes is near zero for a certain amount of time). Notifications can be enabled or disabled by writing on the related client characteristic configuration descriptor.

The other characteristic exposed by the service gives the current value of the acceleration that is measured by the accelerometer. The value is made up of six bytes. Each couple of bytes contains the acceleration on one of the 3 axes. The values are given in mg. This characteristic is readable and can be notified if notifications are enabled.

Another service is also defined. This service contains characteristics that expose data from some environmental sensors: temperature, pressure and humidity.

Tip:

An expansion board with LPS25H pressure sensor and HTS221 humidity sensor can be connected to the motherboard through the expansion connector (F in [Figure 4. Motherboard for the BlueNRG-MS development kit](#)). If the expansion board is not detected, only temperature from STLM75 will be used

For each characteristic, a characteristic format descriptor is present to describe the type of data contained inside the characteristic. All of the characteristics have read-only properties.

Figure 10. BlueNRG-MS sensor demo GATT database

# Handle	UUID (16 or 128bit)	Attribute Type	Properties	Initial Parameter Value	Comment
<div> <div>U</div> <div>R</div> <div>S</div> <div>E</div> <div>R</div> <div>N</div> <div>S</div> <div>E</div> <div>D</div> <div>O</div> <div>C</div> <div>P</div> <div>R</div> <div>T</div> <div>D</div> <div>N</div> <div>E</div> </div>					
1	0001	2800	Primary Service	{Service=0x1801 ("Attribute Profile")}	
2	0002	2803	Characteristic	X {handle=0x0003, UUID=0x2A05}	
3	0003	2A05	Service Changed	{start handle=0x0001, end handle=0xFFFF}	
4	0004	2902	Client Characteristic Configuration	0x0000	
5	0005	2800	Primary Service	{Service=0x1800 ("Generic Access Profile")}	
6	0006	2803	Characteristic	X X X X {handle=0x0007, UUID=0x2A00}	
7	0007	2A00	Device Name	"bluenrg"	
8	0008	2803	Characteristic	X X X {handle=0x0009, UUID=0x2A01}	
9	0009	2A01	Appearance	0x0000	
12	000C	2800	Primary Service	{Service=0x02366E80CF3A11E19AB40002A5D5C51B ("Acc. Service")}	
13	000D	2803	Characteristic	X {handle=0x000E, UUID=0xE23E78A0CF4A11E18FFC00002A5D5C51B}	
14	000E	E23E78A0CF4A11E18FFC0002A5D5C51B	Free Fall	0x00	Indication with value 1 when a free fall condition is detected
15	000F	2902	Client Characteristic Configuration	0x0000	
16	0010	2803	Characteristic	X X {handle=0x0011, UUID=0x340A1B80CF4B11E1AC360002A5D5C51B}	
17	0011	340A1B80CF4B11E1AC360002A5D5C51B	Acceleration	0x000000000000	X-Axis (2bytes) Y-Axis (2bytes) Z-Axis (2bytes)
18	0012	2902	Client Characteristic Configuration	0x0000	
19	0013	2800	Primary Service	{Service=0x42821A40E47711E282D00002A5D5C51B ("Env. Service")}	
20	0014	2803	Characteristic	X {handle=0x0015, UUID=0xA32E5520E47711E2A9E30002A5D5C51B}	
21	0015	A32E5520E47711E2A9E30002A5D5C51B	Temperature	0x0000	Temperature in tenths of degree Celsius
22	0016	2904	Characteristic Format	{format=0x0E, exp=-1, unit=0x272F, n_sp=0x00, descr=0x0000}	format=sint16, unit=temperature celsius
23	0017	2803	Characteristic	X {handle=0x0018, UUID=0xCD20C480E48B11E2840B0002A5D5C51B}	
24	0018	CD20C480E48B11E2840B0002A5D5C51B	Pressure	0x000000	Pressure in hundredths of millibar
25	0019	2904	Characteristic Format	{format=0x0F, exp=-5, unit=0x2780, n_sp=0x00, descr=0x0000}	format=sint24, unit=pressure bar
26	001A	2803	Characteristic	X {handle=0x001B, UUID=0x01C50B60E48C11E2A0730002A5D5C51B}	
27	001B	01C50B60E48C11E2A0730002A5D5C51B	Humidity	0x0000	Humidity in tenths of RH
28	001C	2904	Characteristic Format	{format=0x06, exp=-1, unit=0x2700, n_sp=0x00, descr=0x0000}	format=uint16, unit=unitless

4.1 Supported platforms

The BlueNRG-MS sensor profile demo is supported only on the BlueNRG-MS development platform ([STEVAl-IDB005V1](#)) and on BlueNRG-MS daughterboard ([STEVAl-IDB005V1D](#)).

4.2 BlueNRG-MS app for smartphones

An application is available for smartphones (iOS and android), that works with the sensor profile demo. The development kits are preprogrammed with the sensor profile demo firmware. If the development board has been flashed with another firmware, it can be programmed with the correct firmware. The correct pre-compiled firmware can be found inside firmware folder (BlueNRG-MS_SensorDemo.hex). The source file for the demo is inside the project folder.

This app enables notifications on the acceleration characteristic and displays the value on the screen. Data from environmental sensors are also periodically read and displayed.

Figure 11. BlueNRG-MS app



4.3 BlueNRG-MS sensor profile demo: connection with a central device

This section describes how to interact with a central device, while BlueNRG-MS is acting as a peripheral. The central device can be another BlueNRG-MS acting as a master, or any other Bluetooth smart or smart-ready device.

First, BlueNRG-MS must be set up. In order to do this, a series of HCI command need to be sent to the processor.

4.3.1 Initialization

BlueNRG-MS's stack must be correctly initialized before establishing a connection with another Bluetooth LE device. This is done with two commands:

- `aci_gatt_init()`
- `aci_gap_init(GAP_PERIPHERAL_ROLE, 0, 0x07, &service_handle, &dev_name_char_handle, &appearance_char_handle);`

Where: Role = GAP_PERIPHERAL_ROLE, privacy_enabled = 0, device_name_char_len = 0x07.

See HCI documentation for more information on these commands and on those that follow as well. Peripheral role, privacy enabled or not, device name length must be specified inside the `aci_gap_init` command.

4.3.2 Add service and characteristics

BlueNRG-MS's Bluetooth LE stack has both server and client capabilities. A characteristic is an element in the server database where data are exposed. A service contains one or more characteristics. Add a service using the following command. Parameters are provided only as an example.

- `aci_gatt_add_serv(0x01, 0xA001, 0x01, 0x06, &Service_Handle);`

Where: Service_UUID_Type=0x01, Service_UUID_16=0xA001, Service_Type=0x01, Max_Attributes_Records=0x06.

The command will return the service handle on variable `Service_Handle` (e.g., 0x000C). A characteristic must now be added to this service. This service is identified by the service handle.

- `aci_gatt_add_char (Service_Handle, 0x01, 0xA002, 10, 0x1A,0x00, 0x01, 0x07, 0x01, &Char_Handle);`

Where: Char_UUID_Type=0x01, Char_UUID_16=0xA002, Char_Value_Length=10, Char_Properties=0x1A, Security_Permissions=0x00, GATT_Evt_Mask=0x01, Enc_Key_Size=0x07, Is_Variable=0x01.

With this command a variable-length characteristic has been added, with read, write and notify properties. The characteristic handle is also returned on variable `Char_Handle`.

4.3.3 Set security requirements

BlueNRG-MS exposes a command that the application can use to specify its security requirements. If a characteristic has security restrictions, a pairing procedure must be initiated by the central in order to access that characteristic. Let's assume we want the user to insert a passcode during the pairing procedure.

- `aci_gap_set_authentication_requirement (0x01, 0,0, 7, 16, 123456, 1);`

Where: MITM_Mode=0x01, OOB_Enable=0, OOB_Data=0, Min_Encryption_Key_Size=7, Max_Encryption_Key_Size=16, Use_Fixed_Pin=0, Fixed_Pin=123456, Bonding_Mode=1.

4.3.4 Enter connectable mode

Use GAP ACL commands to enter one of the discoverable and connectable modes.

- `aci_gap_set_discoverable (0x00, 0x800,0x900, 0x00, 0x00, 0x08, local_name, 0x00, 0x00, 0x0000, 0x0000);`

Where: Advertising_Type=0x00, Advertising_Interval_Min=0x800, Advertising_Interval_Max=0x900, Own_Address_Type=0x00, Advertising_Filter_Policy=0x00, Local_Name_Length=0x08, local_name[] = {AD_TYPE_COMPLETE_LOCAL_NAME,'B','I','u','e','N','R','G'}; Service_UUID_Length=0x00, Service_UUID_List=0x00, Slave_Connection_Interval_Min=0x0000, Slave_Connection_Interval_Max=0x0000.

The Local_Name parameter contains the name that will be present in advertising data, as described in Bluetooth core specification, Vol. 3, Part C, Ch. 11.

4.3.5 Connection with central device

Once BlueNRG-MS is put in a discoverable mode, it can be seen by a central device in scanning.

Any Bluetooth smart and smart-ready device can connect to BlueNRG-MS, such as a smartphone. LightBlue is one of the applications in the Apple store for iPhone® 4S/5 and later versions of Apple's iPhone.

Start the LightBlue application. It will start to scan for peripherals. A device with the BlueNRG-MS name will appear on the screen. Tap on the box to connect to the device. A list of all the available services will be shown on the screen. Touching a service will show the characteristics for that service.

BlueNRG-MS has added two standard services: GATT Service (0x1801) and GAP service (0x1800).

Try to read the characteristic from the service just added (0xA001). The characteristic has a variable length attribute, so you will not see any value. Write a string into the characteristic and read it back.

BlueNRG-MS can send notifications of the characteristic that has been previously added, with UUID 0xA002 (after notifications have been enabled). This can be done using the following command:

- `aci_gatt_update_char_value (Service_Handle, Char_Handle, 0,0x05,'hello');`

where: Val_Offset=0, Char_Value_Length=0x05, Char_Value='hello'.

Once this ACL command has been sent, the new value of the characteristic will be displayed on the phone.

4.4 BlueNRG-MS sensor demo: central profile role

This application implements a basic version of the BlueNRG-MS Sensor Profile Central role which emulates the BlueNRG-MS Sensor Demo applications available for smartphones (iOS and Android).

It configures a BlueNRG-MS device as a BlueNRG-MS Sensor device, Central role which is able to find, connect and properly configure the free fall, acceleration and environment sensor characteristics provided by a BlueNRG-MS development platform, configured as a BlueNRG-MS Sensor device, Peripheral role.

This application uses a new set of APIs that allow the performance of the following operations on a BlueNRG-MS Master/Central device:

- Master Configuration Functions
- Master Device Discovery Functions
- Master Device Connection Functions
- Master Discovery Services & Characteristics Functions
- Master Data Exchange Functions
- Master Security Functions
- Master Common Services Functions

These APIs are provided through binary libraries available on Projects\Bluetooth LE\Profile_Framework_Central library. The master library APIs are documented in doxygen format within the SW package.

The BlueNRG-MS Sensor Demo Central role is supported on the BlueNRG-MS development platform (STEVAL-IDB005V1), BlueNRG-MS daughterboard (STEVAL-IDB005V1D) and on BlueNRG-MS USB dongle (STEVAL-IDB006V1).

The sections that follow describe how to use the master library APIs for configuring a BlueNRG-MS Sensor Demo Central device.

4.4.1 Initialization

BlueNRG-MS's master library must be correctly initialized before establishing a connection with another Bluetooth LE device. This is done with this command:

- `Master_Init(¶m)`

param variable allows to set the initialization parameters (device address, name, ...).

Refer to the master library doxygen documentation for more information about the command and related parameters.

On the application main loop, the `Master_Process()` API has to be called in order to process the Master library state machines.

4.4.2 Discovery a sensor peripheral device

In order to discover a Sensor Peripheral device, a discovery procedure has to be started with the master library command:

- `Master_DeviceDiscovery(&devDiscParam);` devDiscParam variable allows to set the discovery parameters (discovery procedure, interval, window, ...).

Refer to the master library doxygen documentation for more information about the command and related parameters.

The found devices are returned through the `Master_DeviceDiscovery_CB()` master library callback (DEVICE_DISCOVERED status).

4.4.3 Connect to discovered sensor peripheral device

Once a Sensor Peripheral device has been found, the Sensor Central device connects to it by using the following master library command:

- `Master_DeviceConnection(&connParam);`

connParam variable allows to set the connection parameters (connection procedure, scan duration, window,...).

Refer to the master library doxygen documentation for more information about the command and related parameters.

When the connection is established with success, the `Master_Connection_CB()` master library callback is called with CONNECTION_ESTABLISHED_EVT event.

4.4.4 Discovery sensor peripheral services and characteristics

Once a Sensor Peripheral device has been connected, the Sensor Central device starts discovery all primary service procedure, by using the following master library command:

- `Master_GetPrimaryServices()`

Refer to the master library doxygen documentation for more information about the command and related parameters.

When services are discovered, the `Master_ServiceCharacPeerDiscovery_CB` master library callback is called with PRIMARY_SERVICE_DISCOVERY code. In particular the sensor and environmental services are discovered.

For each discovered service, the related characteristics are discovered by using the following master library command:

- `Master_GetCharacOfService()`

Refer to the master library doxygen documentation for more information about the command and related parameters.

When the characteristics of a service are discovered, the `Master_ServiceCharacPeerDiscovery_CB` master library callback is called with GET_CHARACTERISTICS_OF_A_SERVICE code. In particular the sensor acceleration, free fall and temperature characteristics are discovered.

4.4.5 Enable sensor peripheral acceleration and free fall notifications

Once the Sensor Peripheral device sensor acceleration and free fall characteristics have been discovered, the Sensor Central device can enable the related characteristics notification by using the following master library command:

- `Master_NotifIndic_Status(masterContext.connHandle, handle, TRUE, FALSE);`

Refer to the master library doxygen documentation for more information about the command and related parameters.

When a characteristic notification is enabled, the `Master_PeerDataExchange_CB()` master library callback is called with `NOTIFICATION_INDICATION_CHANGE_STATUS` code. On a Sensor Central device context, the sensor acceleration and free fall characteristics notifications coming from the Sensor Peripheral device are received through the `Master_PeerDataExchange_CB()` master library callback, `NOTIFICATION_DATA_RECEIVED` code. Each received values is displayed on the connected hyper terminal (115200, 8, N, 1).

4.4.6

Read the sensor peripheral temperature sensor characteristic

Once the Sensor Peripheral device sensor temperature characteristic is discovered, the Sensor Central device can read the related characteristic value by using the following master library command:

- `Master_Read_Value()`

Refer to the master library doxygen documentation for more information about the command and related parameters.

The characteristic value is received through the `Master_PeerDataExchange_CB()` master library callback, `READ_VALUE_STATUS` code. Each received value is also displayed on the connected hyper terminal (115200, 8, N, 1).

5 BlueNRG-MS chat demo application

The software development kit contains another example, which implements a simple 2-way communication between two BlueNRG-MS devices. It shows a simple point-to-point wireless communication using the BlueNRG-MS product.

This demo application exposes one service: chat service. The chat service contains 2 characteristics:

- The TX characteristic: the client can enable notifications on this characteristic. When the server has data to be sent, it will send notifications which will contain the value of the TX characteristic.
- The RX characteristic: this is a writable characteristic. When the client has data to be sent to the server, it will write a value into this characteristic
- The maximum length of the characteristic value is 20 bytes.

There are 2 device roles which can be selected through the specific EWARM workspace:

- The “Server” that exposes the chat service (BLE peripheral device)
- The “Client” that uses the chat service (BLE central device).

The application requires 2 devices to be programmed respectively with the 2 devices roles: server and client. The user must connect the 2 devices to a PC through USB and open a serial terminal on both, with the following configurations:

Table 6. 6. Serial port configuration

Baudrate	115200	bit/sec
Data bits	8	bit
Parity	None	bit
Stop bits	1	bit

The application will listen for keys typed into one device and upon pressing the keyboard return key, it will send them to the remote device. The remote device will listen for RF messages and will output them in the serial port. In other words, anything typed in one device will be visible to the other device.

5.1 Supported platforms

The BlueNRG-MS chat demo (server & client roles) is supported on the BlueNRG-MS development platform (STEVAL-IDB005V1), BlueNRG-MS daughterboard (STEVAL-IDB005V1D) and on BlueNRG-MS USB dongle (STEVAL-IDB006V1).

5.2 BlueNRG-MS chat demo application: peripheral and central devices

This section describes how two BLE chat devices (server-peripheral & client-central) interact with each other in order to set up a point-to-point wireless chat communication.

First, BlueNRG-MS must be set up on both devices. In order to do this, a series of ACI commands need to be sent to the processor.

5.2.1 Initialization

BlueNRG-MS’s stack must be correctly initialized before establishing a connection with another Bluetooth LE device. This is done with two commands

- `aci_gatt_init()`
- BLE Chat, “Server” role:
 - `aci_gap_init(GAP_PERIPHERAL_ROLE, 0, 0x07, &service_handle, &dev_name_char_handle, &appearance_char_handle);`

- BLE Chat, "Client role:
 - `aci_gap_init(GAP_CENTRAL_ROLE, 0, 0x07, &service_handle, &dev_name_char_handle, &appearance_char_handle);`

Peripheral & central BLE roles must be specified inside the GAP_INIT command. See ACI documentation for more information on these commands and on those that follow.

5.2.2 Add service and characteristics

The chat service is added on the BLE chat, server role device using the following command:

```
aci_gatt_add_serv(UUID_TYPE_128, service_uuid, PRIMARY_SERVICE, 7, &chatServHandle);
```

Where `service_uuid` is the private service UUID 128 bits allocated for the chat service (Primary service).

The command will return the service handle in `chatServHandle`.

The TX characteristic is added using the following command (on BLE Chat, Server role device):

```
aci_gatt_add_char(chatServHandle, UUID_TYPE_128, charUuidTX, 20, CHAR_PROP_NOTIFY, ATTR_PERMISSION_NONE, 0, 16, 1, &TXCharHandle);
```

Where `charUuidTX` is the private characteristic UUID 128 bits allocated for the TX characteristic (notify property).

The characteristic handle is also returned (on `TXCharHandle`).

The RX characteristic is added using the following command (on BLE Chat, Server role device):

```
aci_gatt_add_char(chatServHandle, UUID_TYPE_128, charUuidRX, 20, CHAR_PROP_WRITE|CHAR_PROP_WRITE_WITHOUT_RESP, ATTR_PERMISSION_NONE, GATT_SERVER_ATTR_WRITE, 16, 1, &RXCharHandle);
```

Where `charUuidRX` is the private characteristic UUID 128 bits allocated for the RX characteristic (write property).

The characteristic handle is also returned (on `RXCharHandle`).

See ACI documentation for more information on these commands as well as those that follow.

5.2.3 Enter connectable mode

On BLE chat, server role device uses GAP ACI commands to enter into general discoverable mode:

```
aci_gap_set_discoverable(ADV_IND, 0, 0, PUBLIC_ADDR, NO_WHITE_LIST_USE, 8, local_name, 0, NULL, 0, 0);
```

The `local_name` parameter contains the name that will be present in advertising data, as described in the Bluetooth core specification, Vol. 3, Part C, Ch. 11.

5.2.4 Connection with central device

Once the BLE chat, server role device is put in a discoverable mode, it can be seen by the BLE chat, client role device in order to create a Bluetooth low energy connection.

On BLE chat, client role device uses GAP ACI commands to connect with the BLE chat, server role device in advertising mode:

```
aci_gap_create_connection(0x4000, 0x4000, PUBLIC_ADDR, bdaddr, PUBLIC_ADDR, 9, 9, 0, 60, 1000, 1000);
```

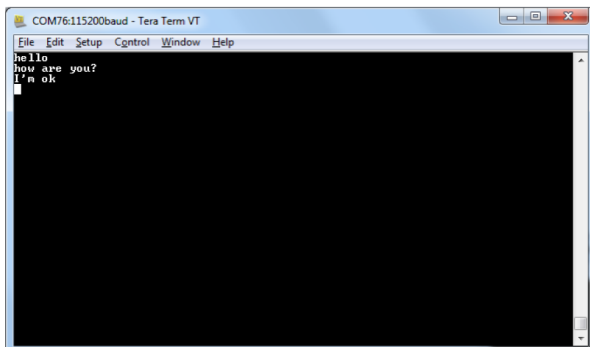
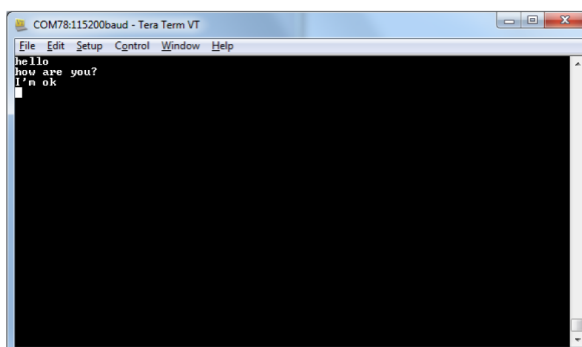
where `bdaddr` is the peer address of the BLE chat, client role device.

Once the 2 devices are connected, the user can set up a serial terminal and type into each of them. The typed characters will be respectively stored in 2 buffers and upon pressing the keyboard return key, BLE communication will work as follows:

1. On BLE chat, server role device, the typed characters will be sent to BLE chat, client role device by notifying the TX characteristic that has been previously added (after notifications have been enabled). This can be done using the following command: `aci_gatt_update_char_value(chatServHandle, TXCharHandle, 0, len, (tHalUInt8 *)cmd+j)`
2. On BLE chat, client role device, the typed characters will be sent to the BLE chat, server role device, by writing the RX characteristic that has been previously added. This can be done using the following command: `aci_gatt_write_without_response(connection_handle, RX_HANDLE+1, len, (tHalUInt8*)cmd+j)`

Where `connection_handle` is the handle returned on connection creation as a parameter of the `EVT_LE_CONN_COMPLETE` event.

Once these ACI commands have been sent, the values of the TX, RX characteristics are displayed on the serial terminals.

Figure 12. BLE chat client example

Figure 13. BLE chat server example


6 BlueNRG-MS Beacon demonstration application

The software development kit contains another example, which shows how to configure a BlueNRG-MS device to advertise specific manufacturing data and allow another BLE device to know if it is in the range of the BlueNRG-MS beacon device.

6.1 Supported platforms

The BlueNRG-MS Beacon demo is supported by the BlueNRG-MS development platform (STEVAL-IDB005V1), BlueNRG-MS daughterboard (STEVAL-IDB005V1D) and on BlueNRG-MS USB dongle (STEVAL-IDB006V1).

6.2 BLE Beacon application setup

This section describes how to configure a BlueNRG-MS device for acting as a beacon device.

6.2.1 Initialization

The BlueNRG-MS stack must be correctly initialized as follows:

- aci_gatt_init()
- aci_gap_init(GAP_PERIPHERAL_ROLE, 0, 0x07, &service_handle, &dev_name_char_handle, &appearance_char_handle)

6.2.2 Define advertising data

The BLE Beacon application advertises the following manufacturing data:

Table 7. BlueNRG-MS Beacon advertising manufacturing data

Data field	Description	Notes
Company identifier code	SIG company identifier	Default is 0x0030 (STMicroelectronics)
ID	Beacon ID	Fixed value
Location UUID	Beacons UUID	Used to distinguish specific beacons from others
Major number	Identifier for a group of beacons	Used to group a related set of beacons
Minor number	Identifier for a single beacon	Used to identify a single beacon
Tx Power	2's complement of the Tx power	Used to establish how far you are from device

Note: SIG company identifiers are available at: <https://www.bluetooth.org/en-us/specification/assigned-numbers/company-identifiers>

6.2.3 Entering non-connectable mode

The BLE Beacon device uses the GAP ACI command to enter non-connectable mode as follows:

```
aci_gap_set_discoverable(ADV_NONCONN_IND, 160, 160, PUBLIC_ADDR,
NO_WHITE_LIST_USE, 0, NULL, 0, NULL, 0, 0);
In order to advertise the specific selected manufacturer data, the BLE Beacon application
uses the following GAP ACIs:
/* Remove TX power level field from the advertising data: it is necessary to have enough
space for the beacon manufacturing data */
ret = aci_gap_delete_ad_type(AD_TYPE_TX_POWER_LEVEL);
/* Define the beacon manufacturing payload */
const uint8_t manuf_data[] = {26, AD_TYPE_MANUFACTURER_SPECIFIC_DATA,
0x30, 0x00, //Company identifier code (Default is 0x0030 - STMicroelectronics)}
```

```
0x02, // ID
0x15, //Length of the remaining payload
0xE2, 0x0A, 0x39, 0xF4, 0x73, 0xF5, 0x4B, 0xC4, //Location UUID
0xA1, 0x2F, 0x17, 0xD1, 0xAD, 0x07, 0xA9, 0x61,
0x00, 0x00, // Major number
0x00, 0x00, // Minor number
0xC8 //2's complement of the Tx power (-56dB)};
};
/* Set the beacon manufacturing data on the advertising packet */
ret = aci_gap_update_adv_data(27, manuf_data);
```

7 BLE remote control demo application

This demo application shows how to control a remote device (like an actuator) using a BlueNRG-MS device. This application periodically sends broadcast data (temperature values) that can be read by any device. The broadcast data is encapsulated in a manufacturer-specific AD type. The data content (besides the manufacturer ID, i.e. 0x0030 for STMicroelectronics) is as follows:

Table 8. BLE remote advertising data

Byte 0	Byte 1	Byte 2
App ID (0x05)	Temperature value (little-endian)	

The temperature value is given in tenths of degrees Celsius.

The device is also connectable and exposes a characteristic used to control the LEDs on the BlueNRG-MS platform. The value of this characteristic is a bitmap of 1 byte. Each bit controls one of the LEDs:

- bit 0 is the status of LED 1
- bit 1 is the status of LED 2
- bit 2 is the status of LED 3
- bit 3 is the status of LED 4
- bit 4 is the status of LED 5

As a consequence, a remote device can connect and write this byte to change or read the status of these LEDs (1 for LED ON, 0 for LED OFF).

The peripheral disconnects after a timeout (DISCONNECT_TIMEOUT), to prevent that a central is always connected to the device.

By default, no security is used, but it can be enabled with ENABLE_SECURITY (refer to file BLE_RC_main.h). When security is enabled the central has to be authenticated before reading or writing the device characteristic.

In order to interact with a BlueNRG-MS device configured as a BLE Remote control, another BLE device (a BlueNRG-MS or any SMART READY device) can be used to scan and see broadcast data.

To control one of the LEDs, the device has to connect to a BlueNRG-MS BLE Remote Control device and write into the exposed control point characteristic. The Service UUID is ed0ef62e-9b0d-11e4-89d3-123b93f75cba. The control point characteristic UUID is ed0efb1a-9b0d-11e4-89d3-123b93f75cba.

7.1 Supported platforms

The BlueNRG-MS BLE Remote Control is supported on the BlueNRG-MS development platform (STEVAL_IDB005V1), BlueNRG-MS daughterboard (STEVAL_IDB005V1D) and on BlueNRG-MS USB dongle (STEVAL_IDB006V1).

7.2 BLE remote control application setup

This section describes how to configure a BlueNRG-MS device to acting as a remote control device.

7.2.1 Initialization

The BlueNRG-MS's stack must be correctly initialized before establishing a connection with another Bluetooth LE device. This is done with two commands

- aci_gatt_init()
- aci_gap_init(GAP_PERIPHERAL_ROLE, 0, 0x07, &service_handle, &dev_name_char_handle, &appearance_char_handle);

7.2.2 Define advertising data

The BLE Remote Control application advertises some manufacturing data as follows:

```
/* Set advertising device name as Node */
const uint8_t scan_resp_data[] =
{0x05, AD_TYPE_COMPLETE_LOCAL_NAME, 'N', 'o', 'd', 'e'}
/* Set scan response data */
hci_le_set_scan_resp_data(sizeof(scan_resp_data), scan_resp_data);
/* Set Undirected Connectable Mode */
ret = aci_gap_set_discoverable(ADV_IND, (ADV_INTERVAL_MIN_MS*1000)/625,
(ADV_INTERVAL_MAX_MS*1000)/625, PUBLIC_ADDR, NO_WHITE_LIST_USE, 0,
NULL, 0, NULL, 0, 0);
/* Set advertising data */
ret = hci_le_set_advertising_data(sizeof(adv_data), adv_data);
```

On the BlueNRG-MS development platform (STEVAL-IDB005V1), the temperature sensor value is set within the `adv_data` variable.

7.2.3 Add service and characteristics

The BLE Remote Control service is added using the following command:

```
aci_gatt_add_serv(UUID_TYPE_128, service_uuid, PRIMARY_SERVICE, 7, &RCServHandle);
```

Where `service_uuid` is the private service 128-bit UUID allocated for the BLE remote service (ed0ef62e-9b0d-11e4-89d3-123b93f75cba).

The command returns the service handle in `RCServHandle`.

The BLE Remote Control characteristic is added using the following command:

```
#if ENABLE_SECURITY
ret = aci_gatt_add_char(RCServHandle, UUID_TYPE_128, controlPointUuid, 1,
CHAR_PROP_READ|CHAR_PROP_WRITE|CHAR_PROP_WRITE_WITHOUT_RESP|CH
AR_PROP_SIGNED_WRITE,
ATTR_PERMISSION_AUTHEN_READ|ATTR_PERMISSION_AUTHEN_WRITE,
GATT_NOTIFY_ATTRIBUTE_WRITE, 16, 1, &controlPointHandle);
#else
ret = aci_gatt_add_char(RCServHandle, UUID_TYPE_128, controlPointUuid, 1,
CHAR_PROP_READ|CHAR_PROP_WRITE|CHAR_PROP_WRITE_WITHOUT_RESP,
ATTR_PERMISSION_NONE, GATT_NOTIFY_ATTRIBUTE_WRITE, 16, 1,
&controlPointHandle);
#endif
```

Where `controlPointUuid` is the private characteristic 128-bit UUID allocated for BLE Remote Control characteristic (ed0efb1a-9b0d-11e4-89d3-123b93f75cba).

If security is enabled, the characteristic properties must be set accordingly to enable authentication on `controlPointUuid` characteristic read and write.

7.2.4 Connection with a BLE Central device

When connected to a BLE Central device (another BlueNRG-MS device or any SMART READY device), the `controlPointUuid` characteristic is used to control the BLE Remote Control platform LED. Each time a write operation is done on `controlPointUuid`, the `EVT_BLUE_GATT_ATTRIBUTE_MODIFIED` event is raised on the `HCI_Event_CB ()` callback and the selected LED/LEDs are turned on or off.

8 List of acronyms

Table 9. List of acronyms used in this document

Term	Meaning
BLE	Bluetooth low energy
USB	Universal serial bus

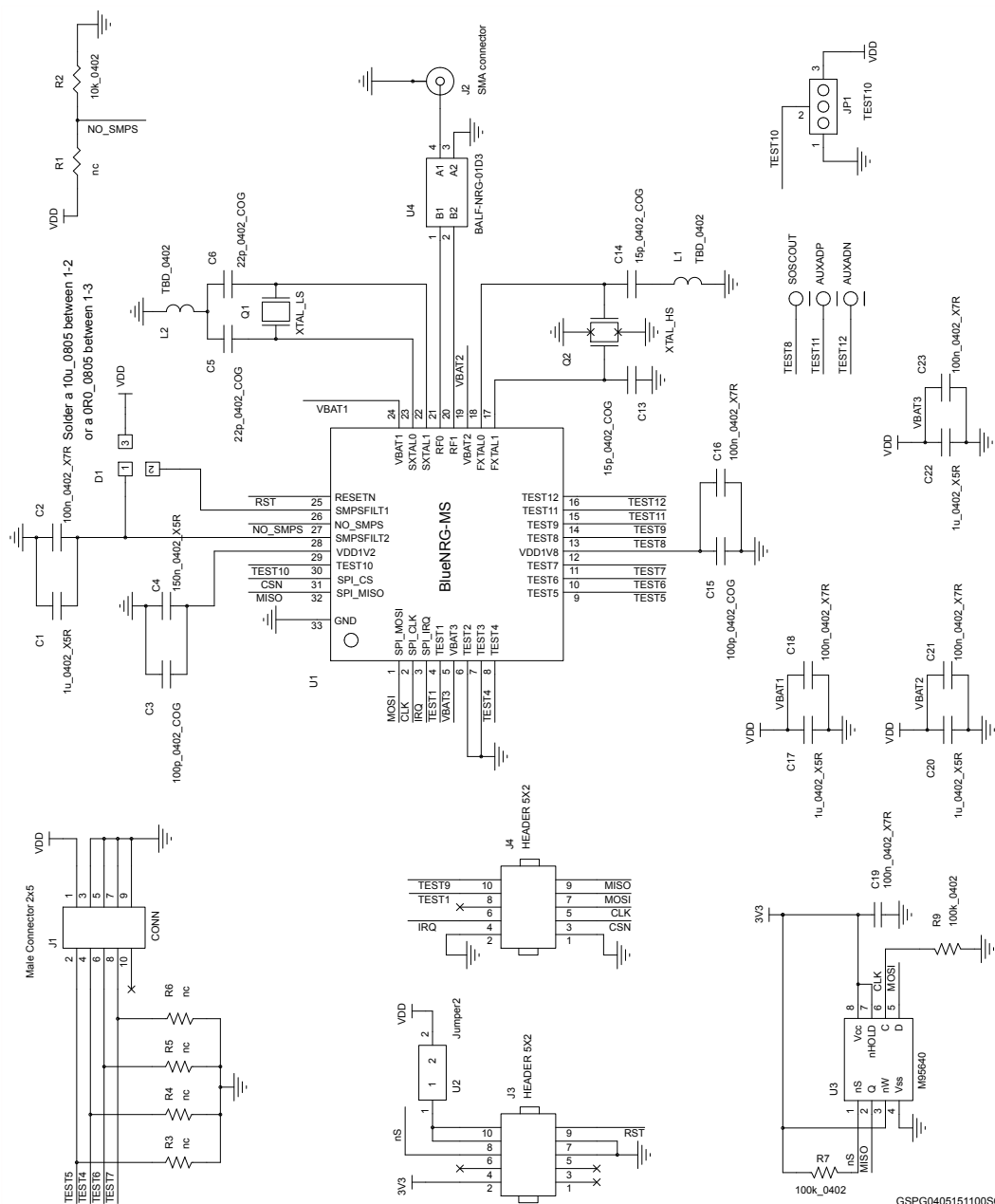
9 References

Table 10. References table

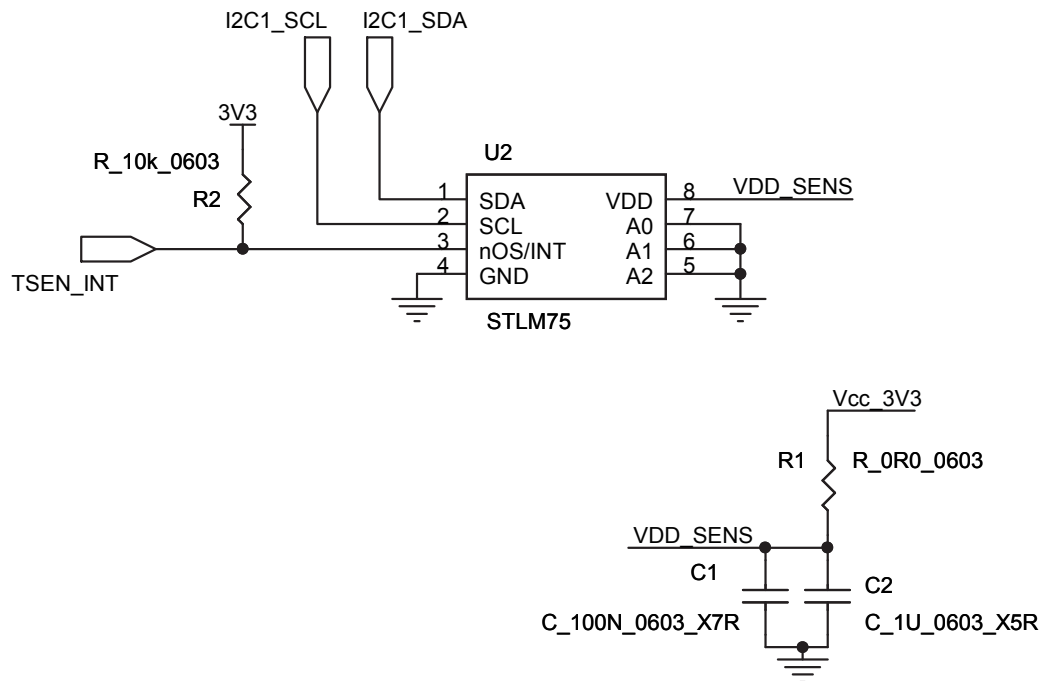
Name	Title
STSW-BLUENRG-DK	BlueNRG SW package for BlueNRG, BlueNRG-MS kits
Bluetooth specification	Specification of the Bluetooth system
UM1865	BlueNRG-MS Bluetooth LE stack APIs and events user manual

10 Available board schematics

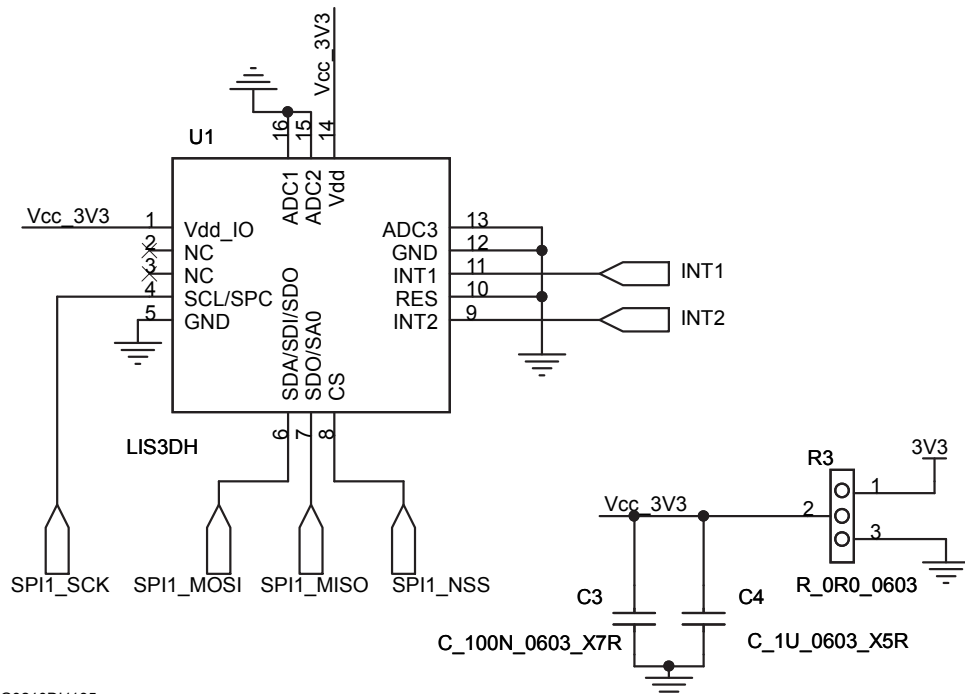
Figure 14. STEVAL-IDB005V1 BlueNRG-MS daughterboard



Note: The STEVAL-IDB005V1D BlueNRG-MS daughterboard is identical to the BlueNRG-MS daughterboard available within the STEVAL-IDB005V1 kit.

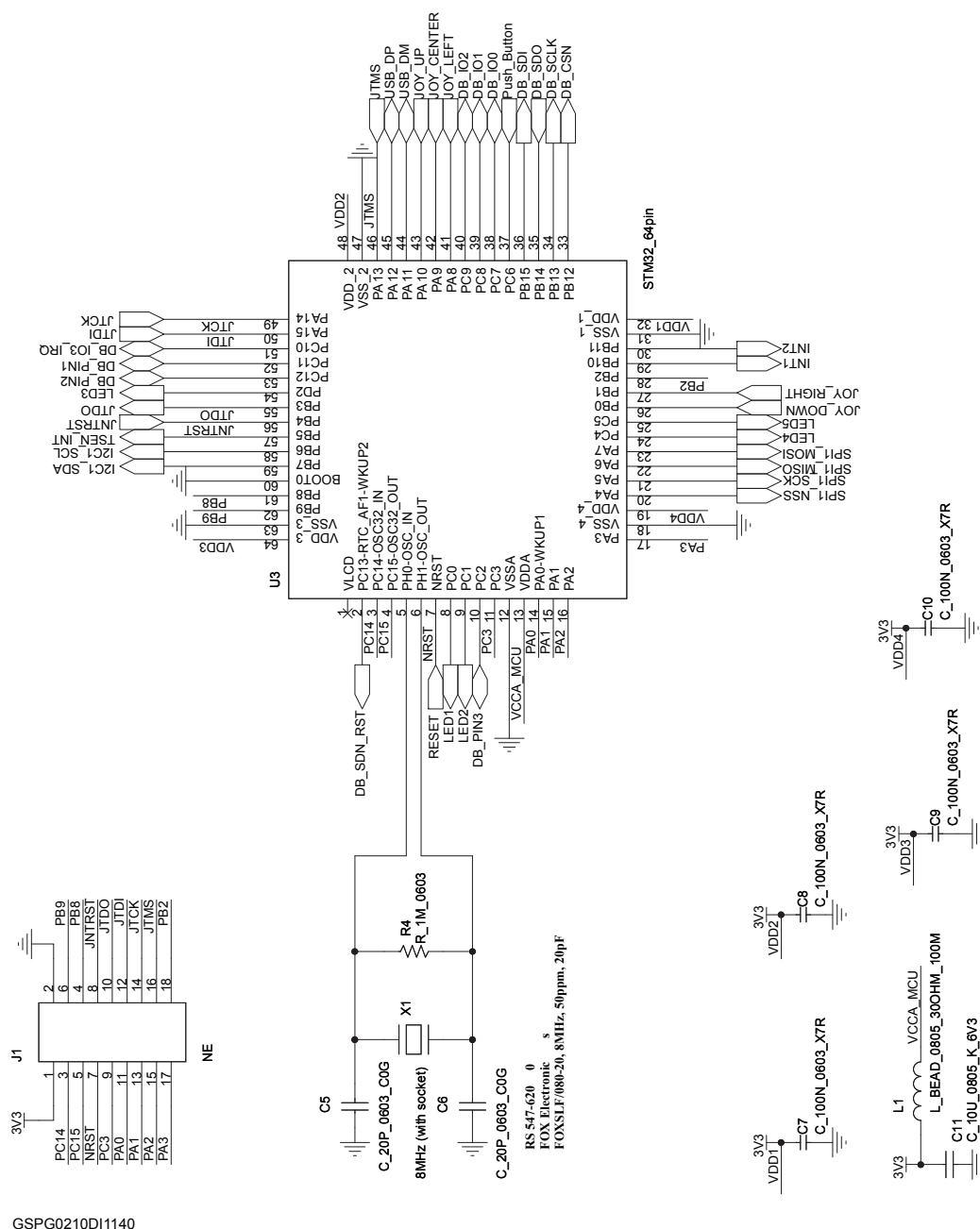
Figure 15. STEVAL-IDB005V1 temperature sensor


GSPG0210DI1130

Figure 16. STEVAL-IDB005V1 accelerometer


GSPG0210DI1135

Figure 17. STEVAL-IDB005V1 MCU



GSPG0210DI1140

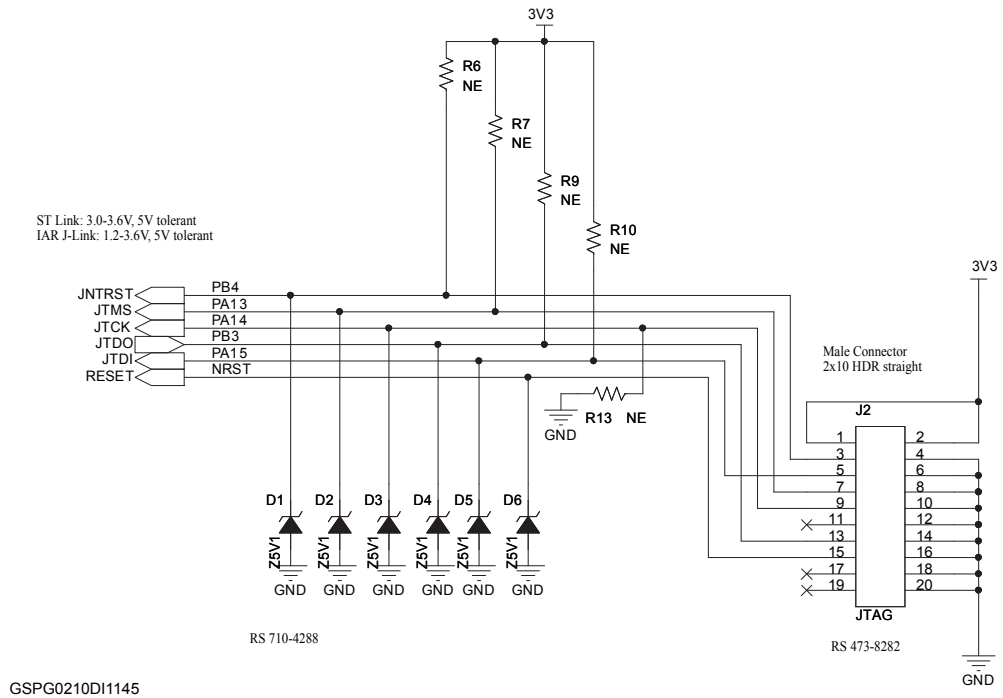
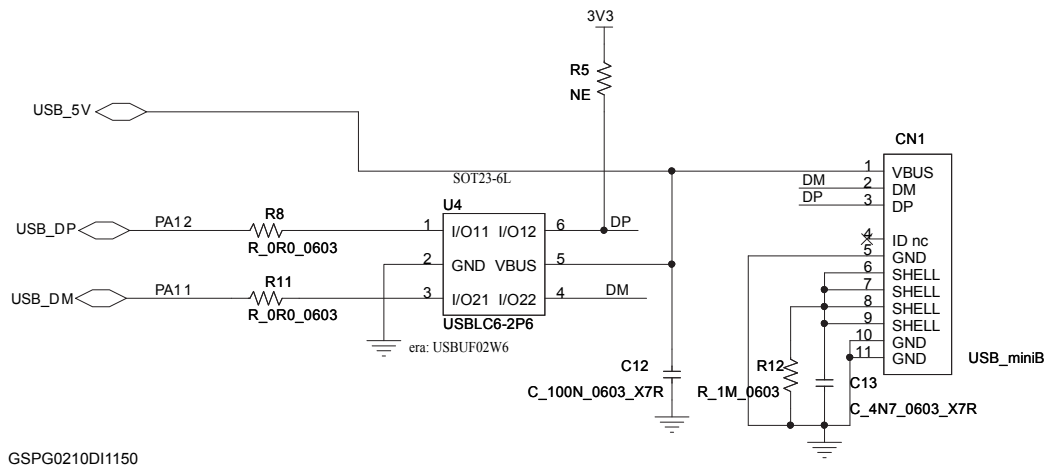
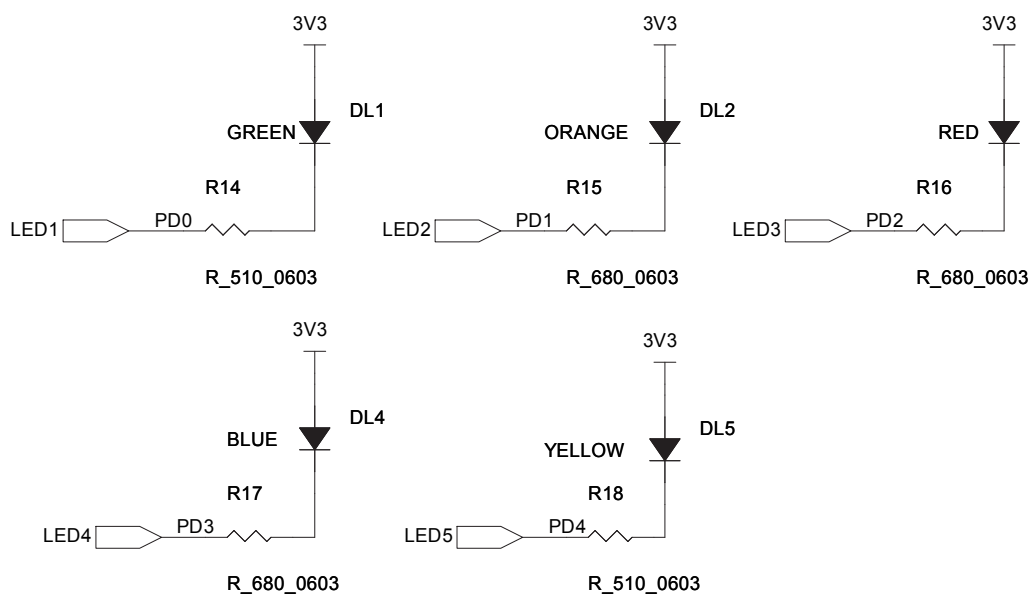
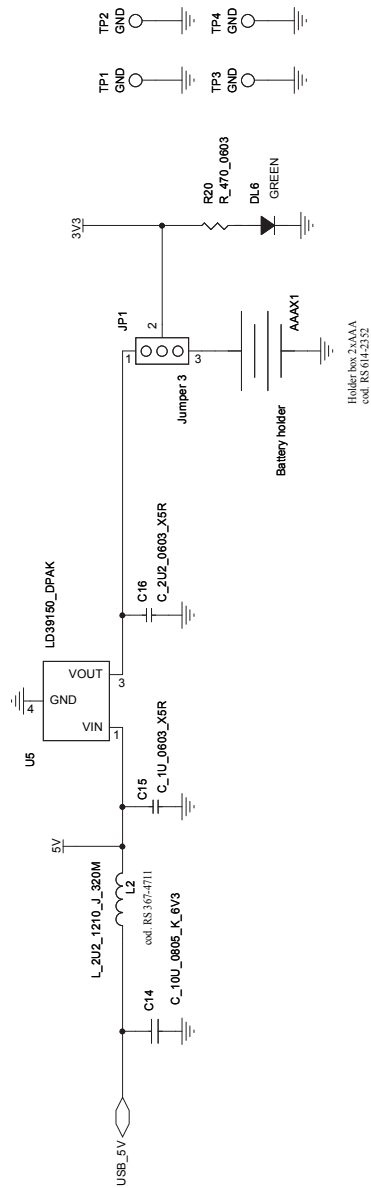
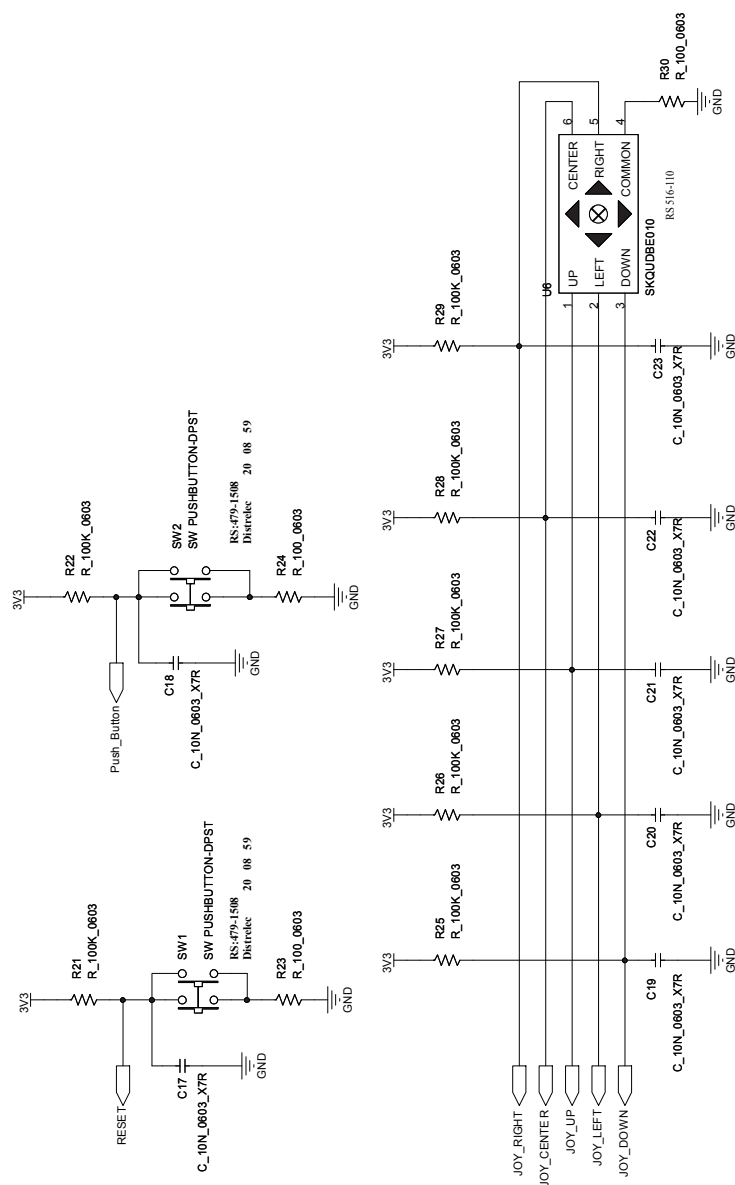
Figure 18. STEVAL-IDB005V1 JTAG/SWD

Figure 19. STEVAL-IDB005V1 USB


Figure 20. STEVAL-IDB005V1 LED


GSPG0210DI1155

Figure 21. STEVAL-IDB005V1 power supply


GSPG0210DI1200

Figure 22. STEVAL-IDB005V1 button and joystick


GSPG0210DI1205

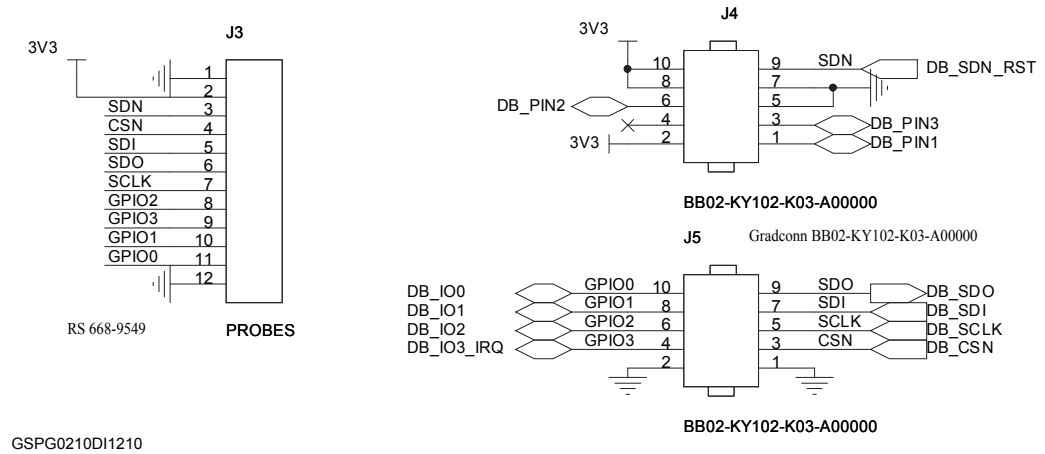
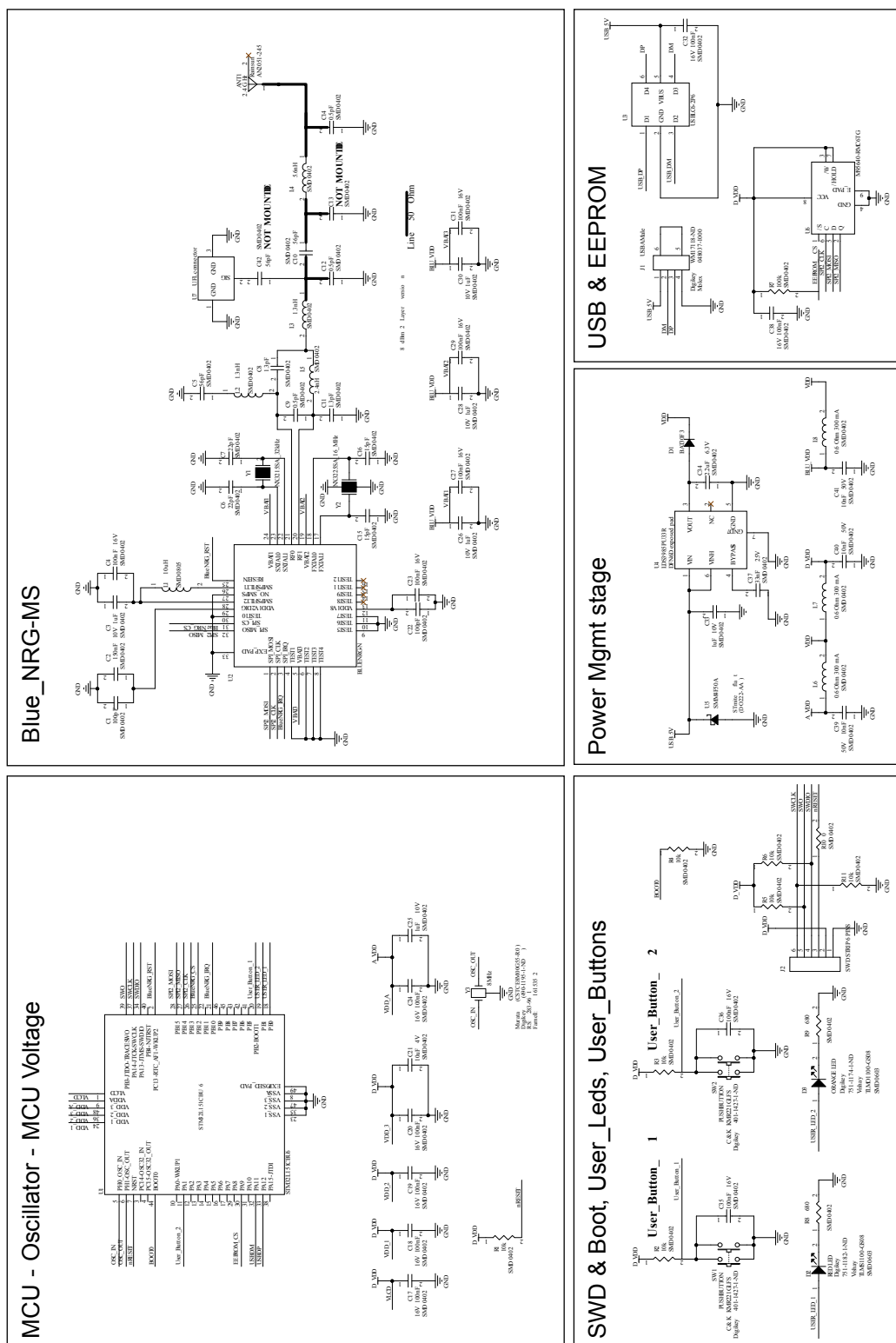
Figure 23. STEVAL-IDB005V1 daughterboard connectors


Figure 24. STEVAL-IDB006V1 USB dongle schematics


GSPG0907151600SG

Revision history

Table 11. Document revision history

Date	Version	Changes
14-May-2015	1	Initial release.
03-Dec-2015	2	Added: - Section 2.4: STEVAL-IDB006V1 USB dongle - Figure 36: STEVAL-IDB006V1 USB dongle schematics Updated: - Figure 3, Figure 9, Figure 13, Figure 14, Figure 15 and Figure 16.
26-May-2016	3	Added: - Section 9: References. Removed: - Section 3.
09-Nov-2018	4	Minor text changes to improve readability

Contents

1	Getting started	2
1.1	STEVAL-IDB005V1 kit contents	2
1.2	STEVAL-IDB005V1D kit contents	2
1.3	STEVAL-IDB006V1 kit contents	2
1.4	System requirements	3
1.5	BlueNRG-MS development kit setup	3
2	Hardware description	4
2.1	STEVAL-IDB005V1 motherboard	4
2.1.1	Microcontroller and connections	4
2.1.2	Power	6
2.1.3	Sensors	7
2.1.4	Extension connector	7
2.1.5	Push-buttons and joystick	7
2.1.6	JTAG connector	7
2.1.7	LEDs	7
2.1.8	Daughterboard interface	7
2.2	BlueNRG-MS daughterboard	7
2.2.1	Current measurements	9
2.2.2	Hardware setup	9
2.2.3	STM32L preprogrammed application	9
2.3	STEVAL-IDB005V1D Kit	9
2.4	STEVAL-IDB006V1 USB dongle	9
2.4.1	Microcontroller and connections	10
2.4.2	SWD interface	11
2.4.3	RF connector	12
2.4.4	Push-buttons	13
2.4.5	User LEDs	13
2.4.6	BALF-NRG-01D3 integrated balun	13
2.4.7	Hardware setup	13
2.4.8	STM32L preprogrammed application	13

3	Programming with BlueNRG-MS network processor.....	14
3.1	Requirements	14
3.2	Software directory structure	14
4	BlueNRG-MS sensor profile demo.....	15
4.1	Supported platforms	16
4.2	BlueNRG-MS app for smartphones	16
4.3	BlueNRG-MS sensor profile demo: connection with a central device.....	17
4.3.1	Initialization	17
4.3.2	Add service and characteristics.....	17
4.3.3	Set security requirements	17
4.3.4	Enter connectable mode	18
4.3.5	Connection with central device	18
4.4	BlueNRG-MS sensor demo: central profile role	18
4.4.1	Initialization	18
4.4.2	Discovery a sensor peripheral device	19
4.4.3	Connect to discovered sensor peripheral device	19
4.4.4	Discovery sensor peripheral services and characteristics	19
4.4.5	Enable sensor peripheral acceleration and free fall notifications	19
4.4.6	Read the sensor peripheral temperature sensor characteristic	20
5	BlueNRG-MS chat demo application	21
5.1	Supported platforms	21
5.2	BlueNRG-MS chat demo application: peripheral and central devices	21
5.2.1	Initialization	21
5.2.2	Add service and characteristics.....	22
5.2.3	Enter connectable mode	22
5.2.4	Connection with central device	22
6	BlueNRG-MS Beacon demonstration application	24
6.1	Supported platforms	24
6.2	BLE Beacon application setup.....	24
6.2.1	Initialization	24
6.2.2	Define advertising data	24

6.2.3	Entering non-connectable mode	24
7	BLE remote control demo application	26
7.1	Supported platforms	26
7.2	BLE remote control application setup	26
7.2.1	Initialization	26
7.2.2	Define advertising data	26
7.2.3	Add service and characteristics	27
7.2.4	Connection with a BLE Central device	27
8	List of acronyms.....	28
9	References	29
10	Available board schematics.....	30
	Revision history	39
	Contents	40
	List of tables	43
	List of figures.....	44

List of tables

Table 1.	MCU pin description versus board function	5
Table 2.	Connections between BlueNRG-MS board and motherboard on left connector	8
Table 3.	Connections between BlueNRG-MS board and motherboard on right connector	9
Table 4.	MCU pin description versus board function	10
Table 5.	SWD connection	12
Table 6.	6. Serial port configuration	21
Table 7.	BlueNRG-MS Beacon advertising manufacturing data	24
Table 8.	BLE remote advertising data	26
Table 9.	List of acronyms used in this document.	28
Table 10.	References table	29
Table 11.	Document revision history	39

List of figures

Figure 1.	BlueNRG-MS kit motherboard with the STEVAL-IDB005V1 daughterboard connected	2
Figure 2.	STEVAL-IDB005V1D BlueNRG-MS daughterboard	2
Figure 3.	STEVAL-IDB006V1 BlueNRG-MS USB dongle	3
Figure 4.	Motherboard for the BlueNRG-MS development kit	4
Figure 5.	BlueNRG-MS daughterboard	8
Figure 6.	STEVAL-IDB005V1D BlueNRG-MS daughterboard	9
Figure 7.	SWD connection scheme with ST-LINK/V2.	12
Figure 8.	RF connector scheme	13
Figure 9.	Profile framework structure.	14
Figure 10.	BlueNRG-MS sensor demo GATT database.	16
Figure 11.	BlueNRG-MS app	17
Figure 12.	BLE chat client example	23
Figure 13.	BLE chat server example	23
Figure 14.	STEVAL-IDB005V1 BlueNRG-MS daughterboard	30
Figure 15.	STEVAL-IDB005V1 temperature sensor.	31
Figure 16.	STEVAL-IDB005V1 accelerometer	31
Figure 17.	STEVAL-IDB005V1 MCU	32
Figure 18.	STEVAL-IDB005V1 JTAG/SWD	33
Figure 19.	STEVAL-IDB005V1 USB	33
Figure 20.	STEVAL-IDB005V1 LED	34
Figure 21.	STEVAL-IDB005V1 power supply	35
Figure 22.	STEVAL-IDB005V1 button and joystick	36
Figure 23.	STEVAL-IDB005V1 daughterboard connectors	37
Figure 24.	STEVAL-IDB006V1 USB dongle schematics	38

IMPORTANT NOTICE – PLEASE READ CAREFULLY

STMicroelectronics NV and its subsidiaries ("ST") reserve the right to make changes, corrections, enhancements, modifications, and improvements to ST products and/or to this document at any time without notice. Purchasers should obtain the latest relevant information on ST products before placing orders. ST products are sold pursuant to ST's terms and conditions of sale in place at the time of order acknowledgement.

Purchasers are solely responsible for the choice, selection, and use of ST products and ST assumes no liability for application assistance or the design of Purchasers' products.

No license, express or implied, to any intellectual property right is granted by ST herein.

Resale of ST products with provisions different from the information set forth herein shall void any warranty granted by ST for such product.

ST and the ST logo are trademarks of ST. All other product or service names are the property of their respective owners.

Information in this document supersedes and replaces information previously supplied in any prior versions of this document.

© 2018 STMicroelectronics – All rights reserved