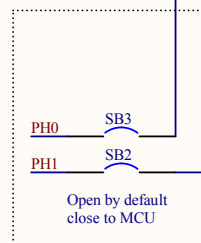
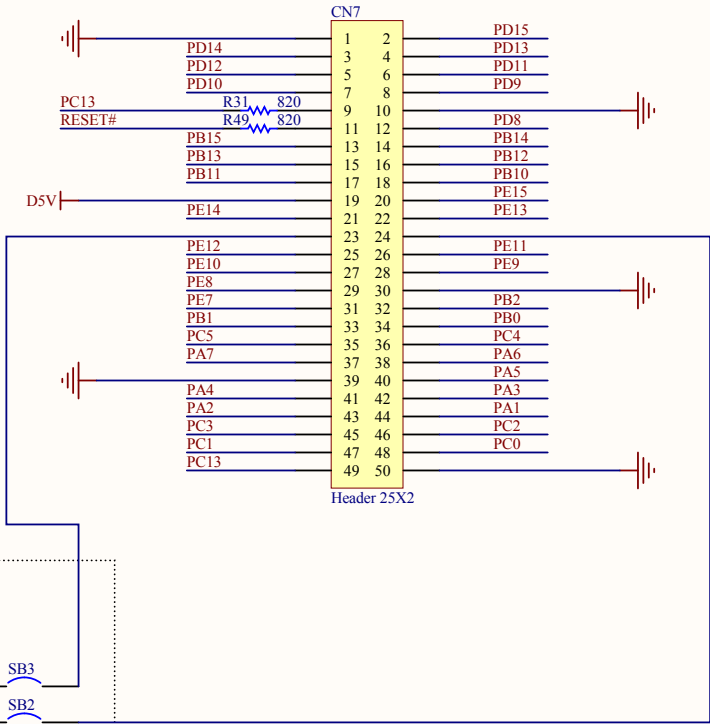
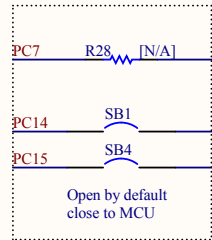


**STMicroelectronics**

Title: *STM32L152-EVAL Audio*

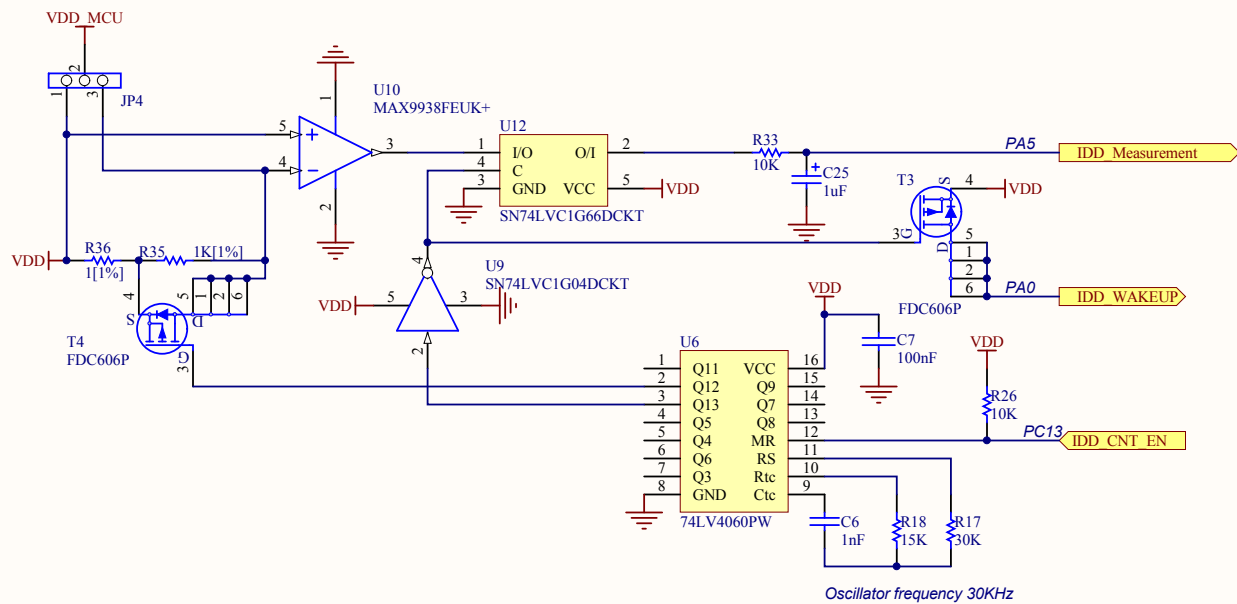
Number: MB819	Rev: B.4(PCB.SCH)	Date: 9/7/2011	Sheet 4 of 14
---------------	-------------------	----------------	---------------



<u>PA[0..15]</u>	PA[0..15]
<u>PB[0..15]</u>	PB[0..15]
<u>PC[0..15]</u>	PC[0..15]
<u>PD[0..15]</u>	PD[0..15]
<u>PE[0..15]</u>	PE[0..15]
<u>RESET#</u>	RESET#
<u>PHI[0..2]</u>	PHI[0..2]

Title: *STM32L152-EVAL Extension Connector*

Number: MB819	Rev: B.4(PCB.SCH)	Date: 9/7/2011	Sheet 7 of 14
---------------	-------------------	----------------	---------------

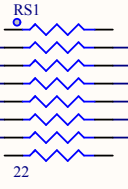
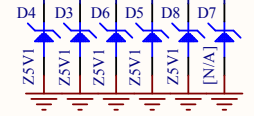


**STMicroelectronics**

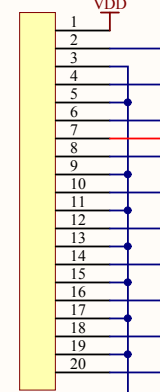
Title: STM32L152-EVAL IDD\_Measurement

Number: MB819 Rev: B.4(SCH.PCB) Date: 9/7/2011 Sheet 10 of 14

TMS/SWDIO  
TCK/SWCLK  
TDO/SWO  
TDI  
TRST  
RESET#



CN8  
FTSH-110-01-L-DV



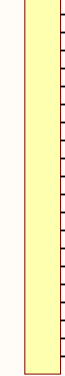
TRACE D3 PE6  
TRACE D2 PE5  
TRACE D1 PE4  
TRACE D0 PE3  
TRACE CK PE2

Trace connector

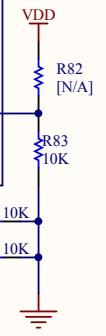
PA13  
PA14  
PB3  
PA15  
PB4



CN9  
JTAG

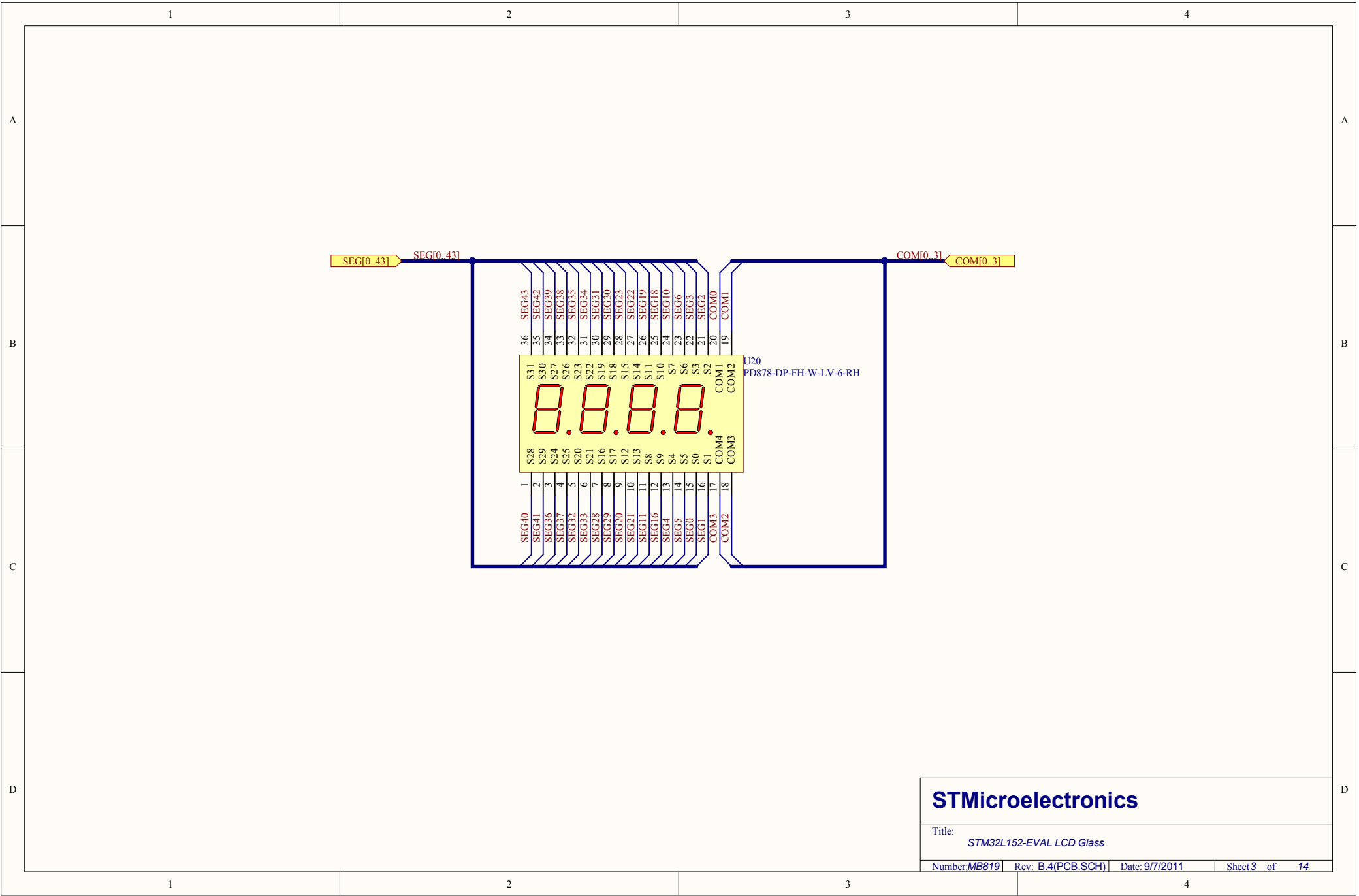


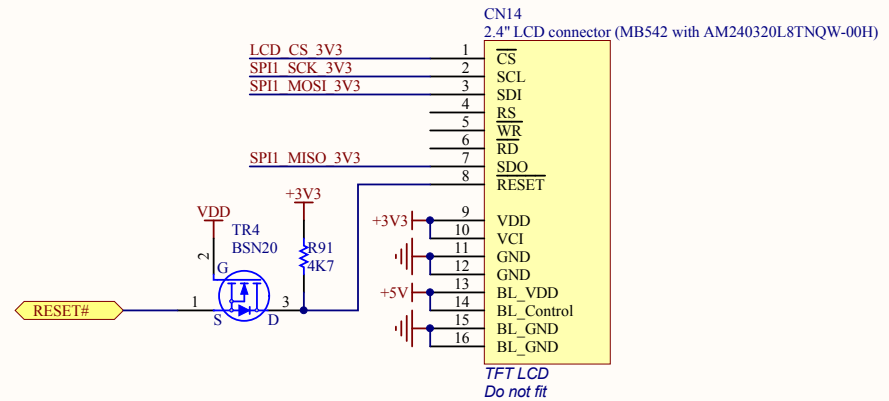
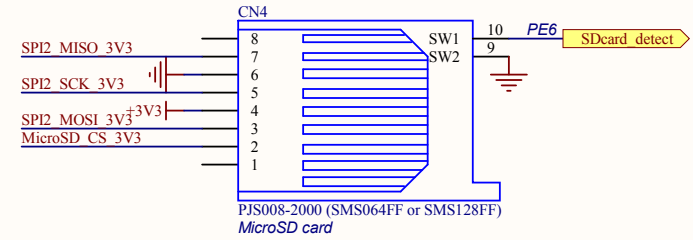
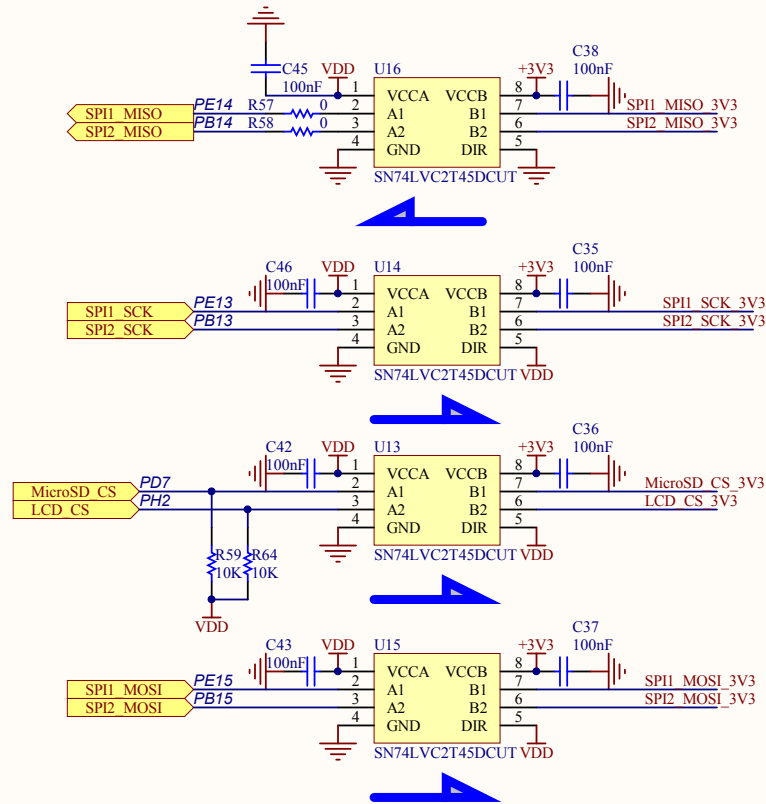
JTAG connector



**STMicroelectronics**

Title: STM32L152-EVAL JTAG&Trace  
Number: MB819 Rev: B.4(PCB.SCH) Date: 9/7/2011 Sheet 13 of 14





**STMicroelectronics**

Title:  
STM32L152-EVAL LCD&SDcard

Number: MB819 Rev: B.4(PCB.SCH) Date: 9/7/2011 Sheet 8 of 14

U\_LCD\_Glass  
LCD\_Glass.SCHDOC

U\_Audio  
Audio.SchDoc

U\_Extension connector  
Extension connector.SCHDOC

U\_IDD\_measurement  
IDD\_measurement.SchDoc

U\_TemSensor  
TemSensor.SCHDOC

U\_RS232\_IrDA  
RS232\_IrDA.SCHDOC

U\_LCD\_MicroSD  
LCD\_MicroSD.SchDoc

U\_Power  
Power.SchDoc

U\_MCU  
MCU.SchDoc

U\_Touch Sensing  
Touch Sensing.SchDoc

U\_Peripherals  
Peripherals.SchDoc

U\_JTAG&Trace  
JTAG&Trace.SchDoc

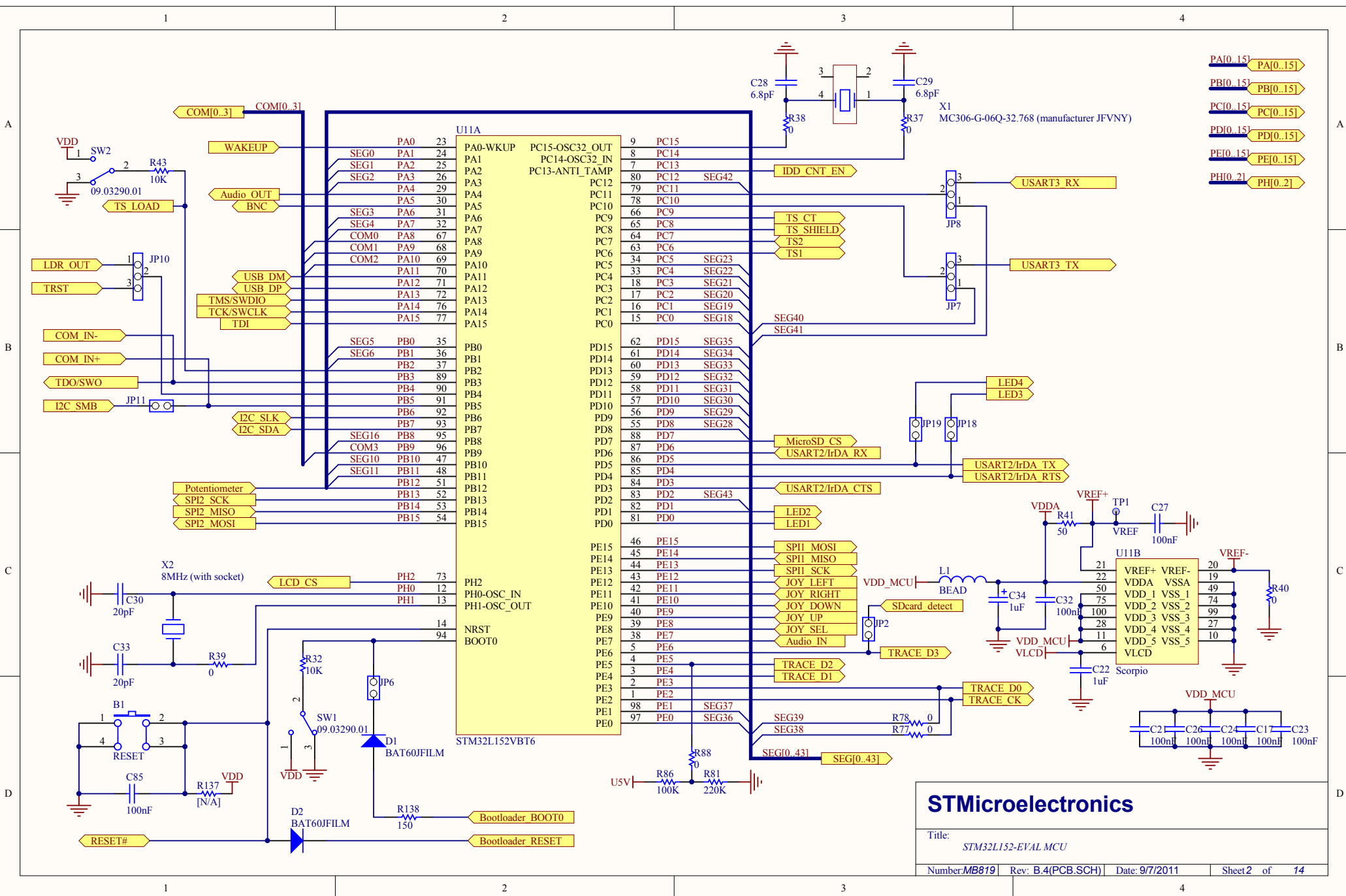
U\_ST\_LINK  
ST\_LINK.SCHDOC

Note1:All text in the each sheet is in *Italic* format to be different with Net label.  
Note2:Version upgrade from B.1 to B.2 due to FDC606 used for T3 and T4 instead of STT5PF20V.  
Note3:Version upgrade from B.3 to B.4 to correct comments on *italic* for LD3&LD4 on sheet 5.

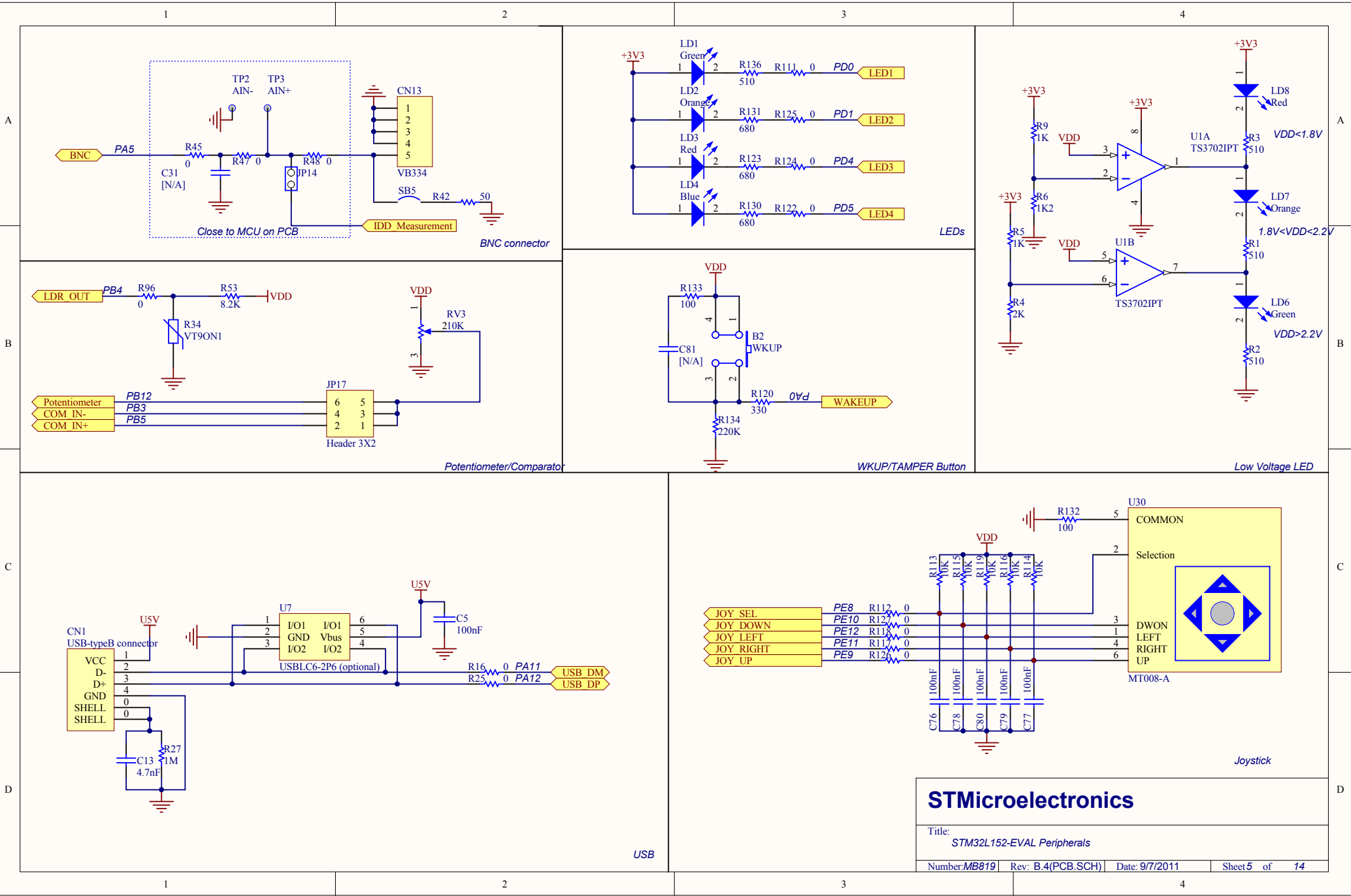
**STMicroelectronics**

Title:  
*STM32L152-EVAL*

Number: *MB819* Rev: *B.4(PCB.SCH)* Date: *9/7/2011* Sheet *7* of *14*



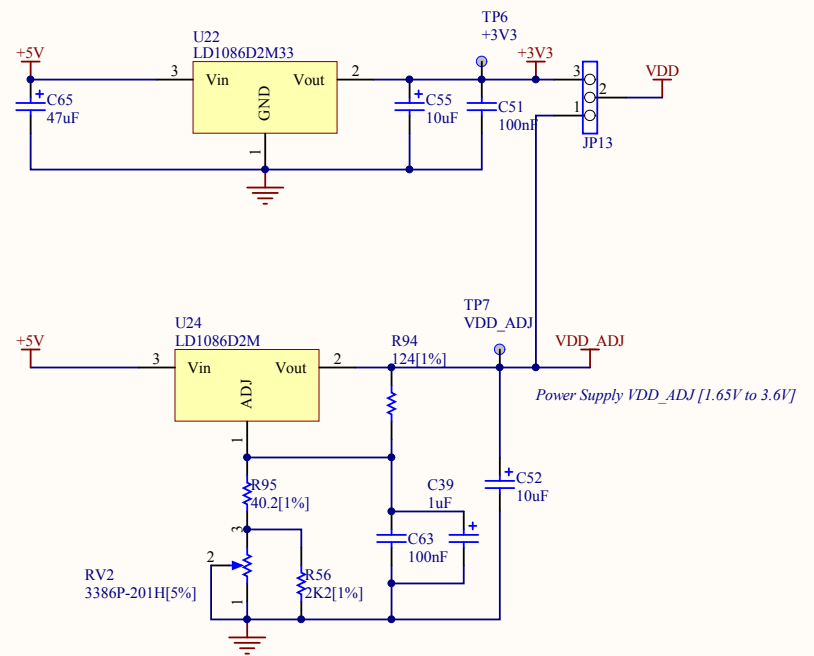
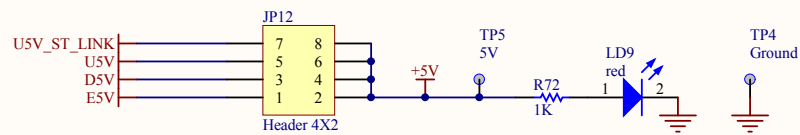
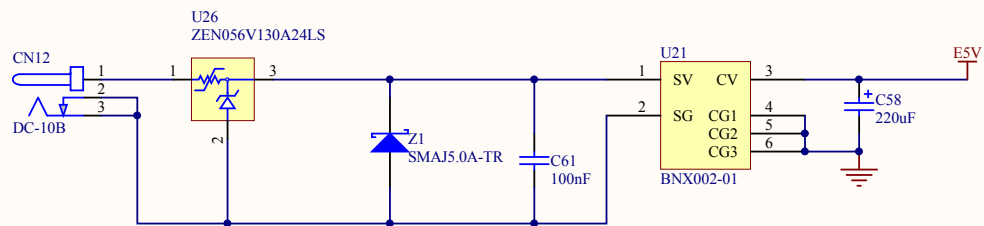




**STMicroelectronics**

Title:  
STM32L152-EVAL Peripherals

Number: MB819	Rev: B.4(PCB.SCH)	Date: 9/7/2011	Sheet 5 of 14
---------------	-------------------	----------------	---------------



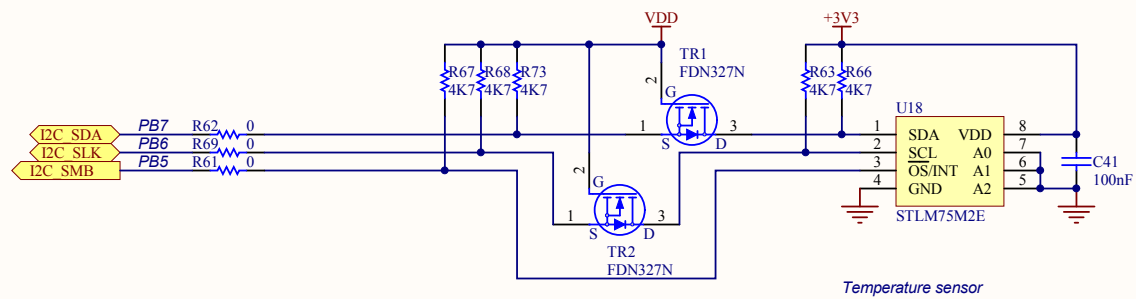
**STMicroelectronics**

Title:  
STM32L152-EVAL Power

Number: MB819 Rev: B.4(PCB.SCH) Date: 9/7/2011 Sheet 6 of 14



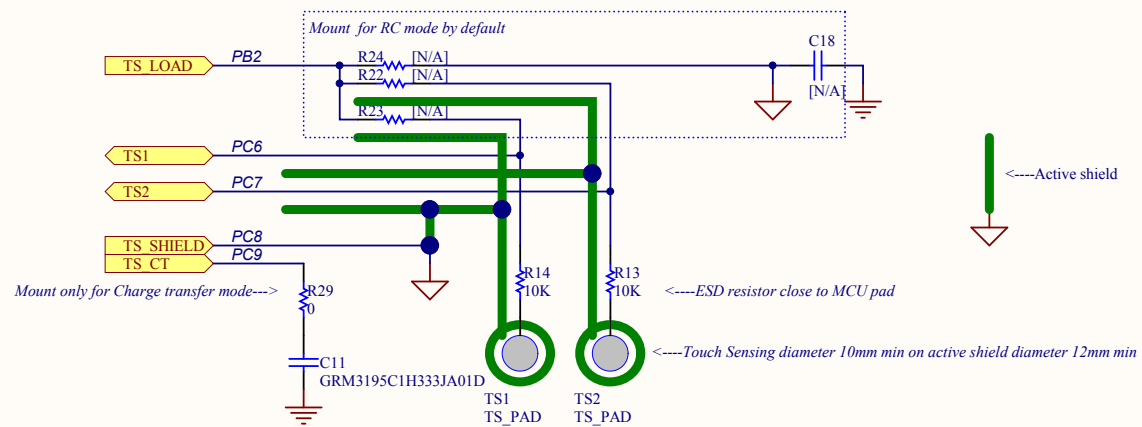




**STMicroelectronics**

Title:  
STM32L152-EVAL TemperatureSensor

Number:MB819 Rev: B.4(PCB.SCH) Date: 9/7/2011 Sheet 11 of 14



**STMicroelectronics**

Title: STM32L152-EVAL Touch Sensing

Number: MB819 Rev: B.4(PCB.SCH) Date: 9/7/2011 Sheet 14 of 14