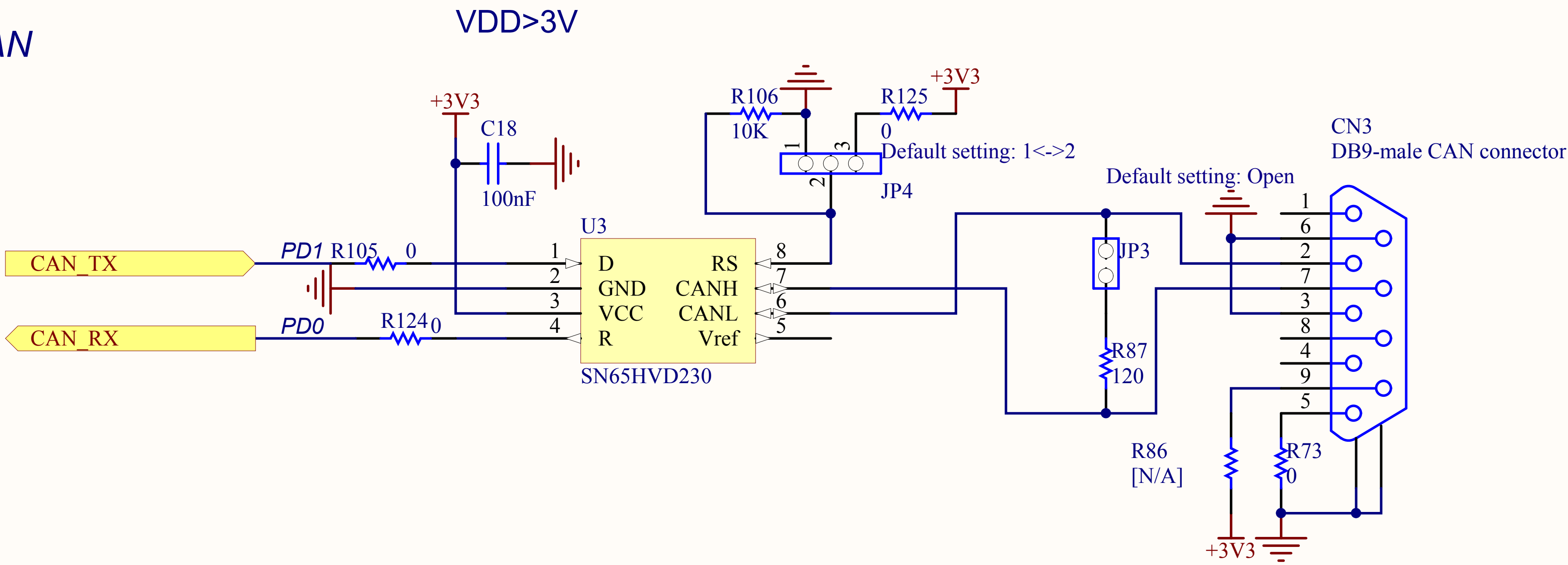


**STMicroelectronics**

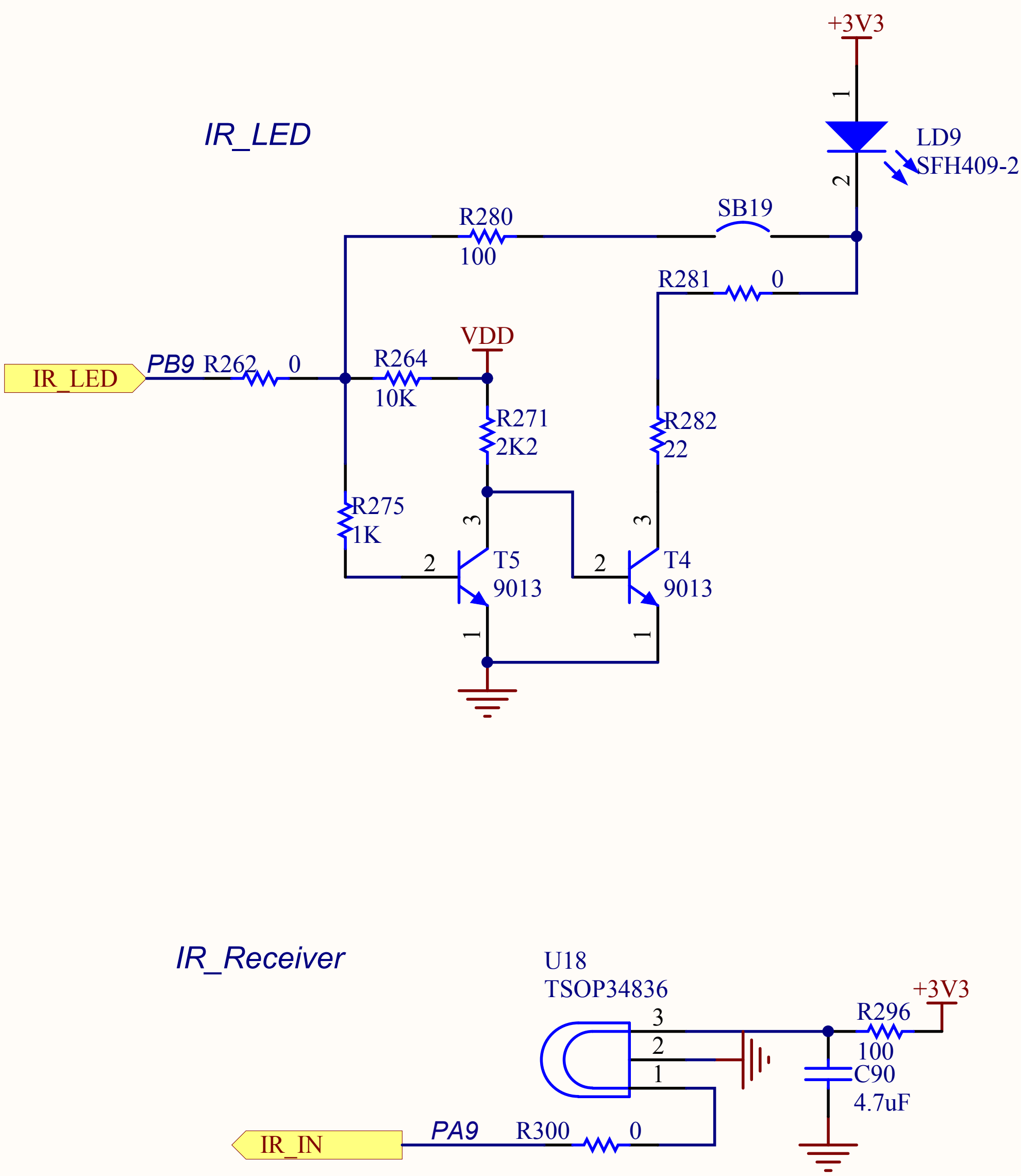
Title: **STM32303E-EVAL Audio**

Number: MB1019 Rev: C.2 Date: 7/22/2014 Sheet 5 of 13

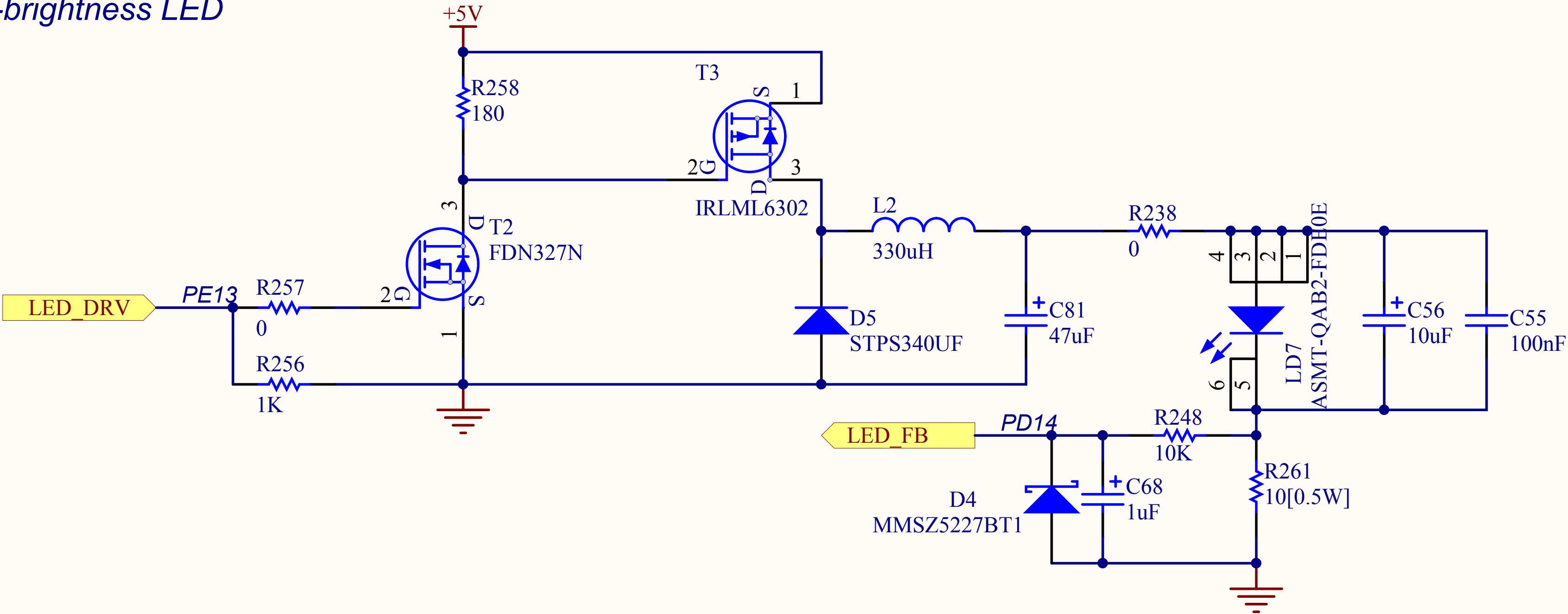
CAN



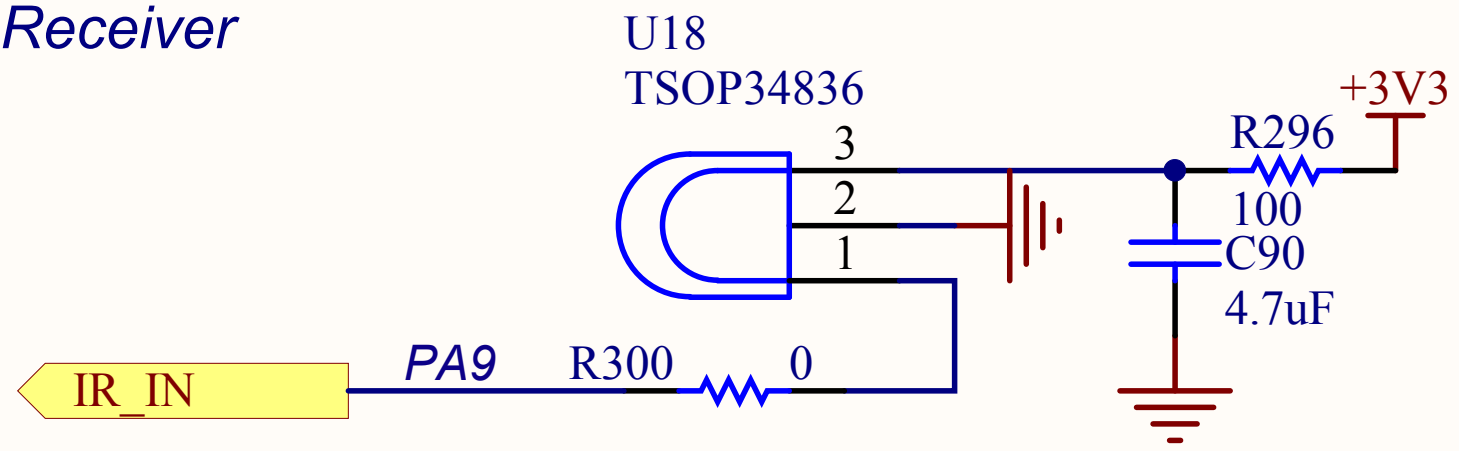
IR



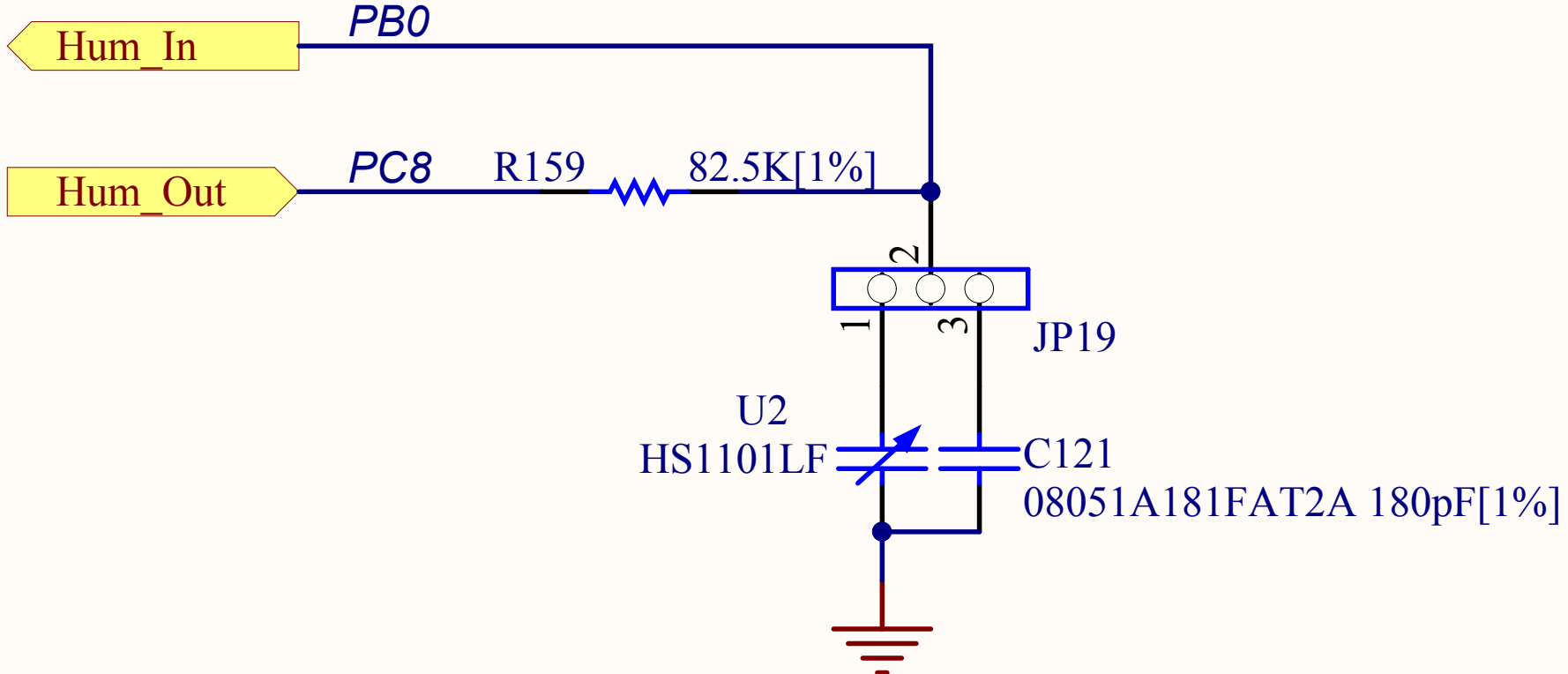
High-brightness LED



IR\_Receiver



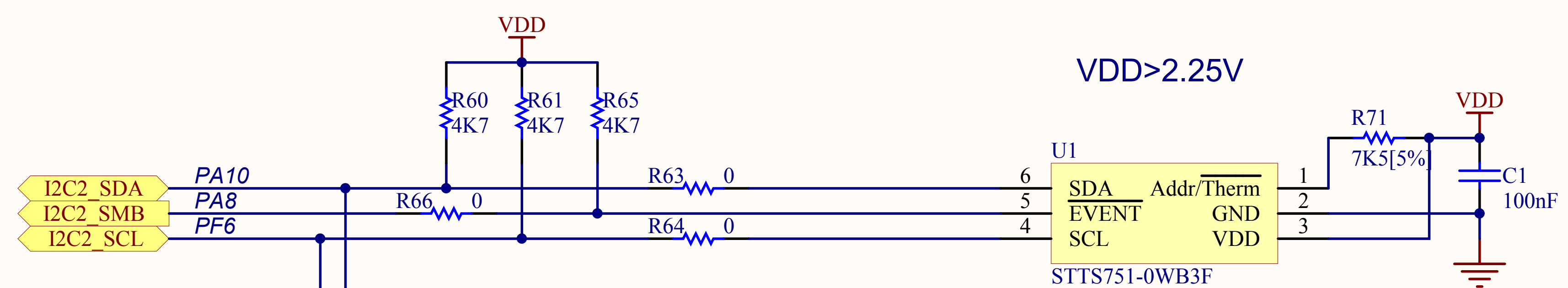
Humidity Sensor (Measure Condition: VDDA=VDDIO)



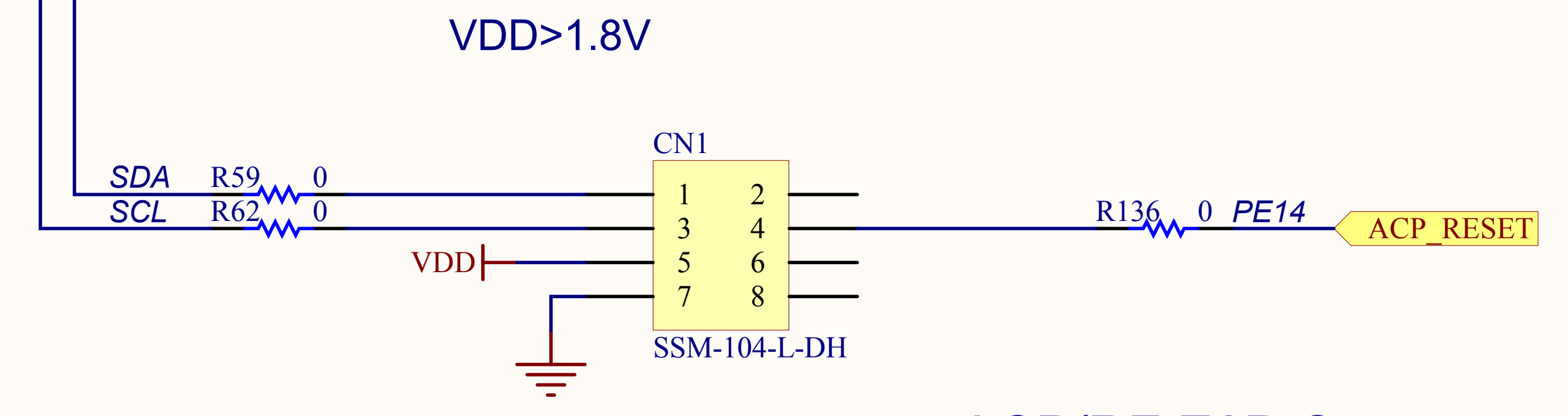
STMicroelectronics

Title: STM32303E-EVAL CAN & IR & High-brightness LED & Humidity Sensor

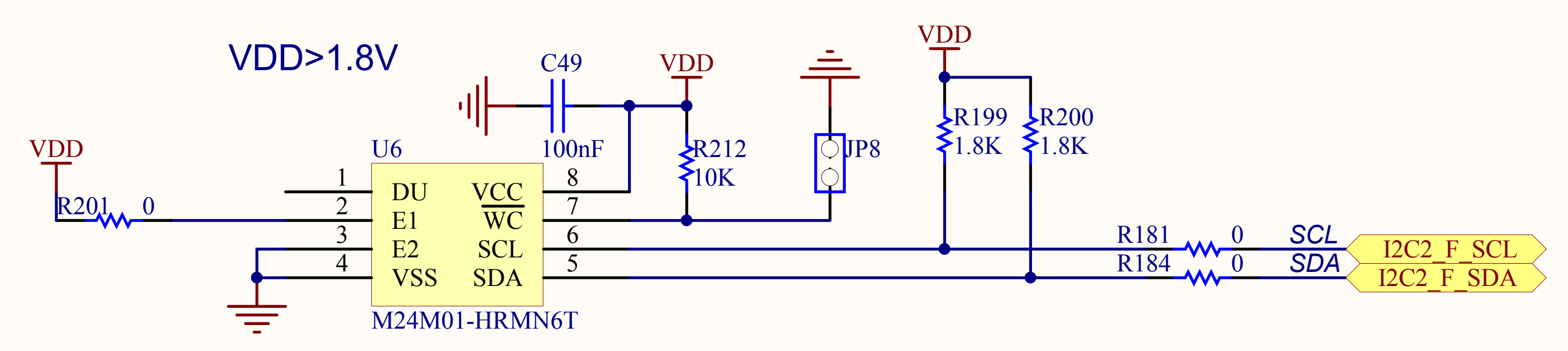




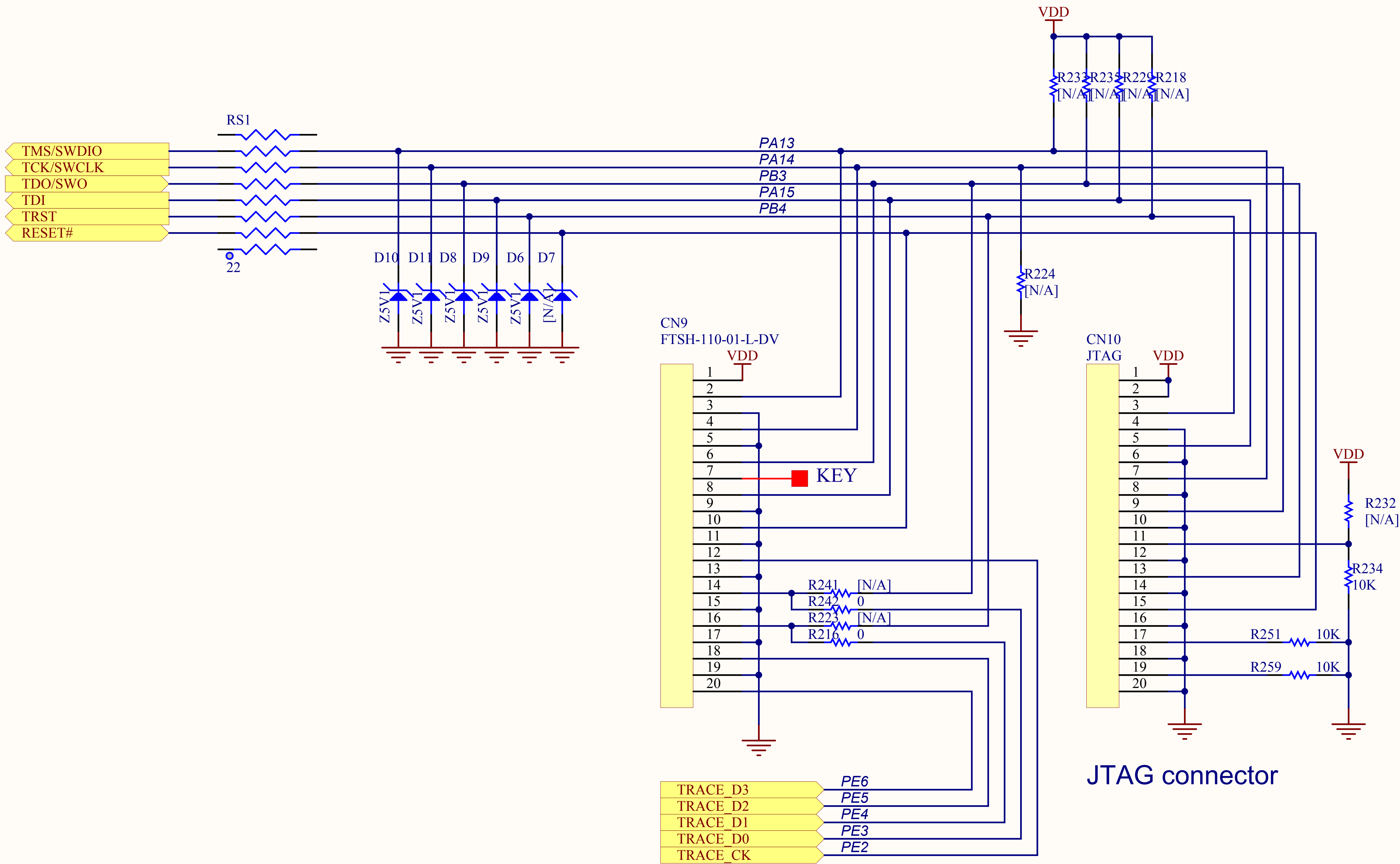
Temperature sensor  
Address:1001000



ACP/RF E2P Connector  
Address:1010(E2)00



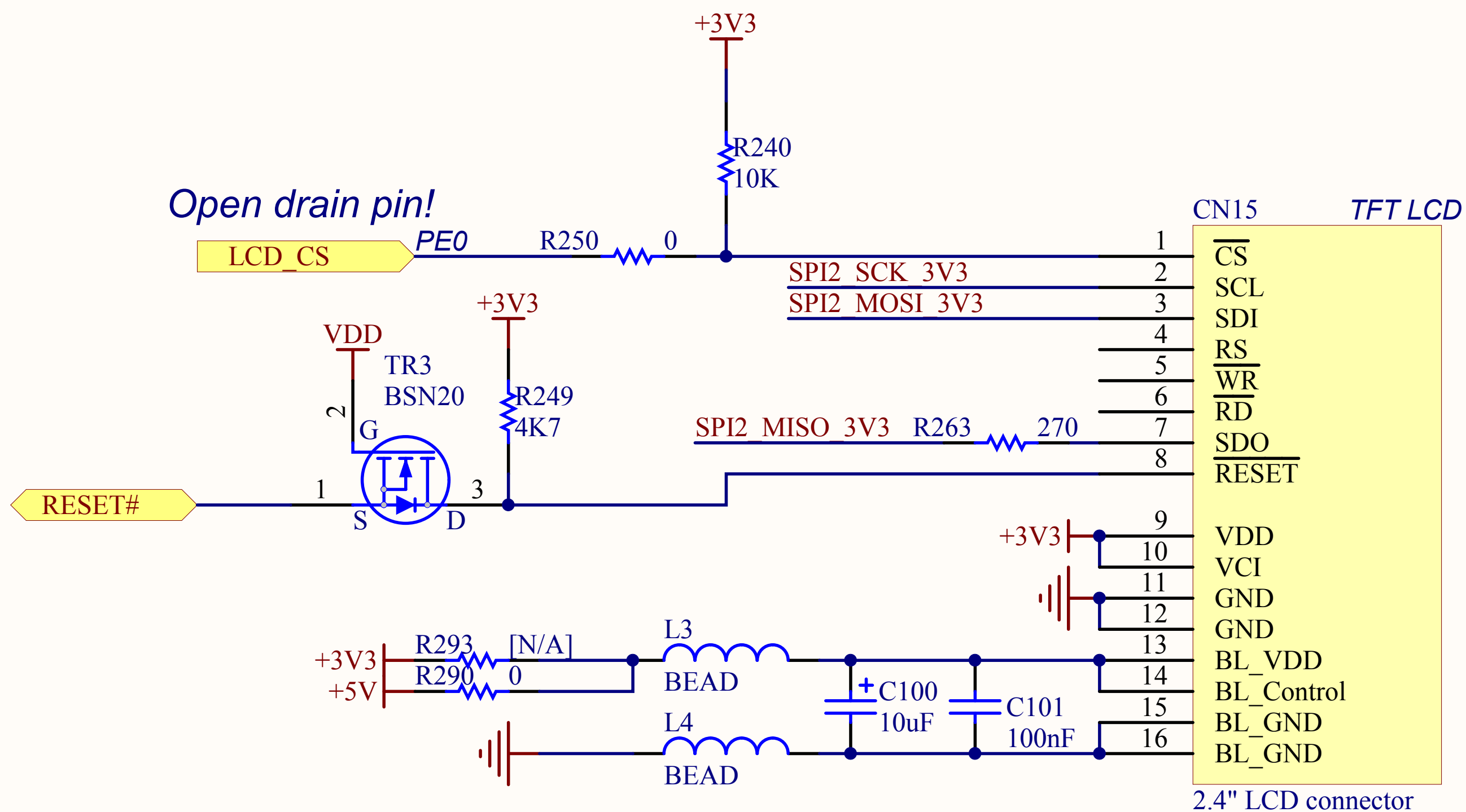
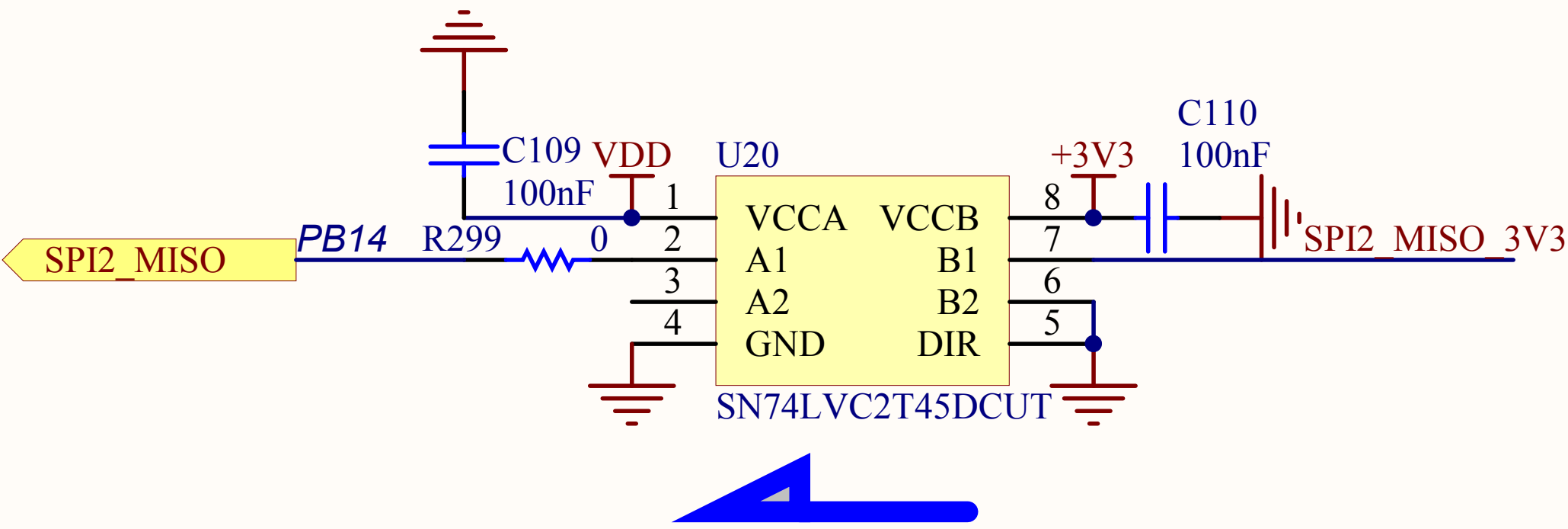
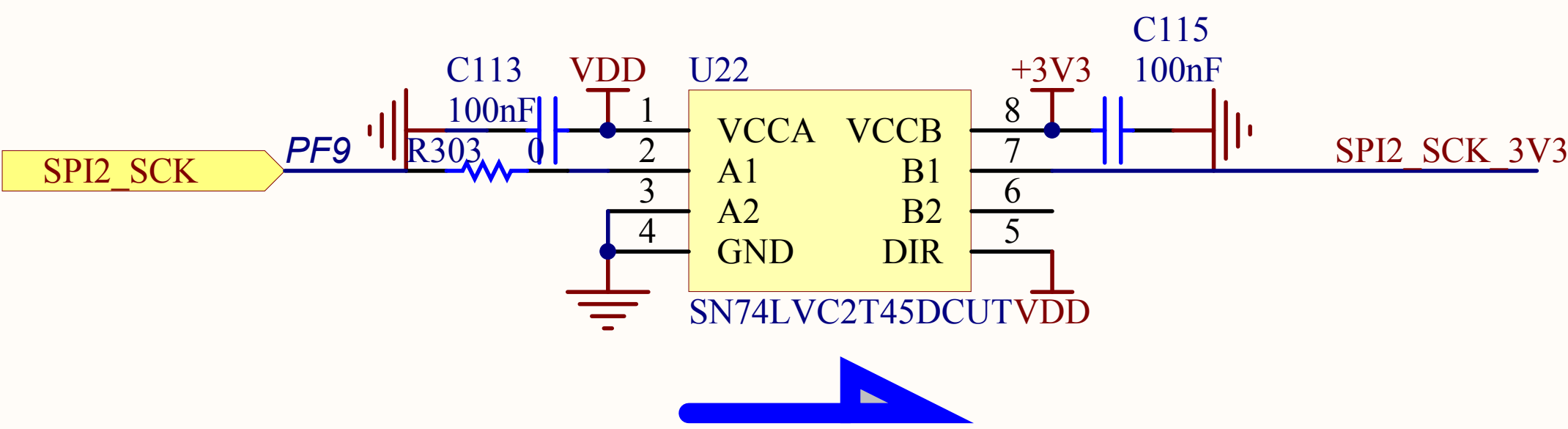
E2PROM  
Address:101001(A16)



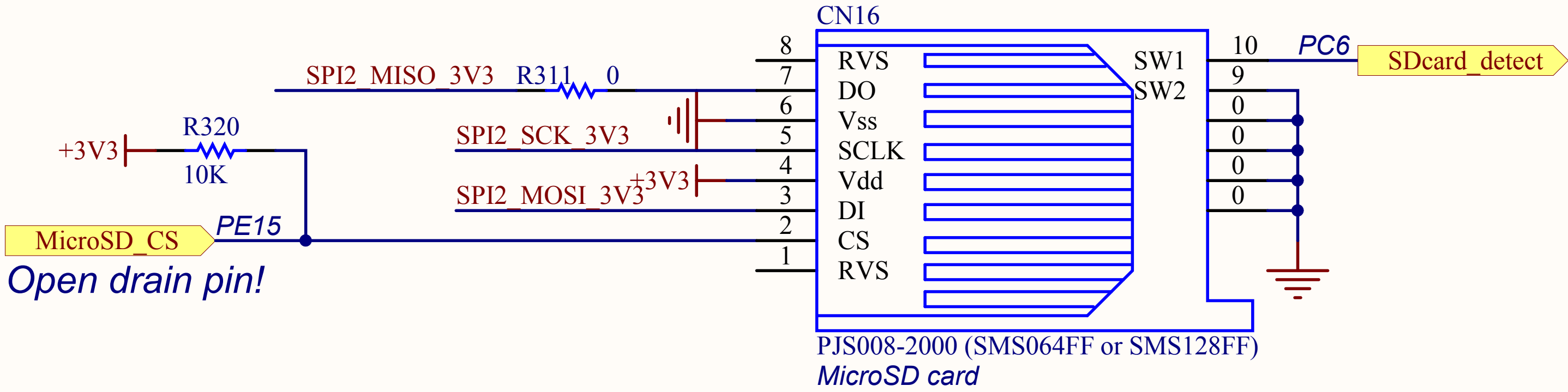
Trace connector

JTAG connector

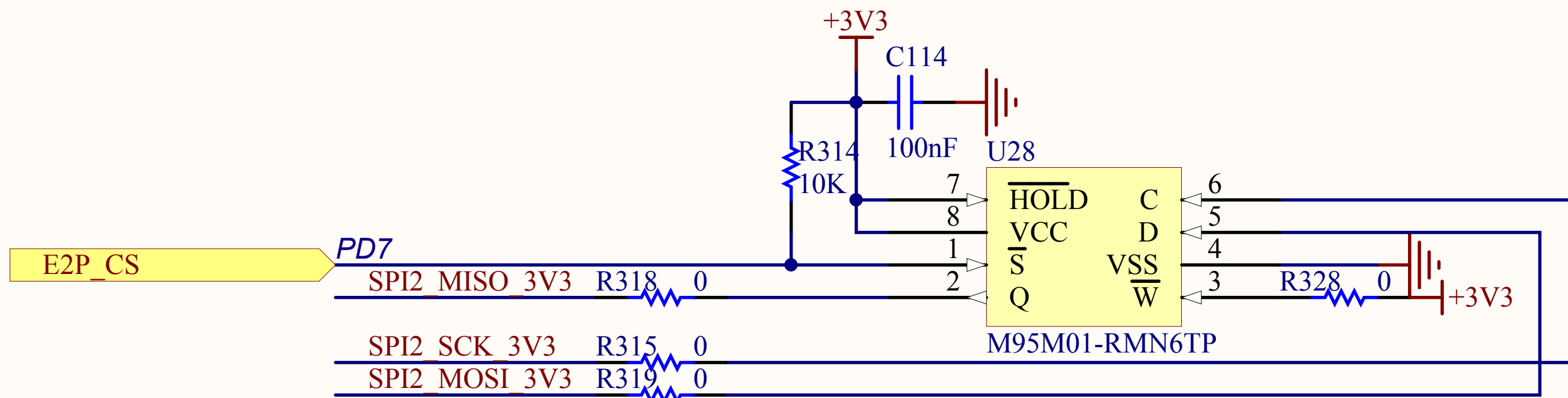
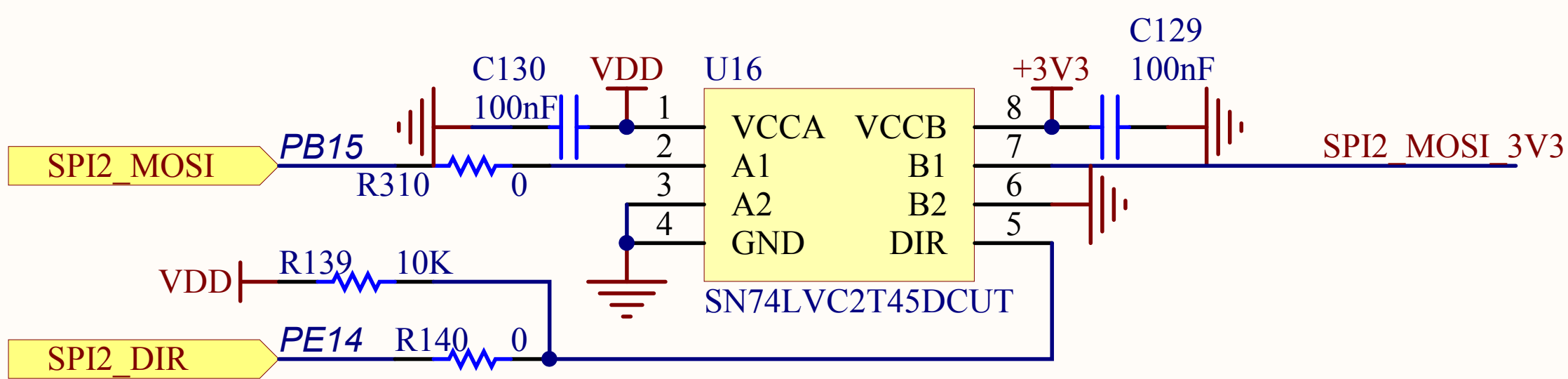
STMicroelectronics			
Title: STM32303E-EVAL JTAG&Trace			
Number:MB1019	Rev: C.2	Date: 7/22/2014	Sheet 12 of 13



SPI LCD



SPI MICRO SD



SPI EEPROM

STMicroelectronics

Title: STM32303E-EVAL LCD&SDcard&Flash



A

A

B

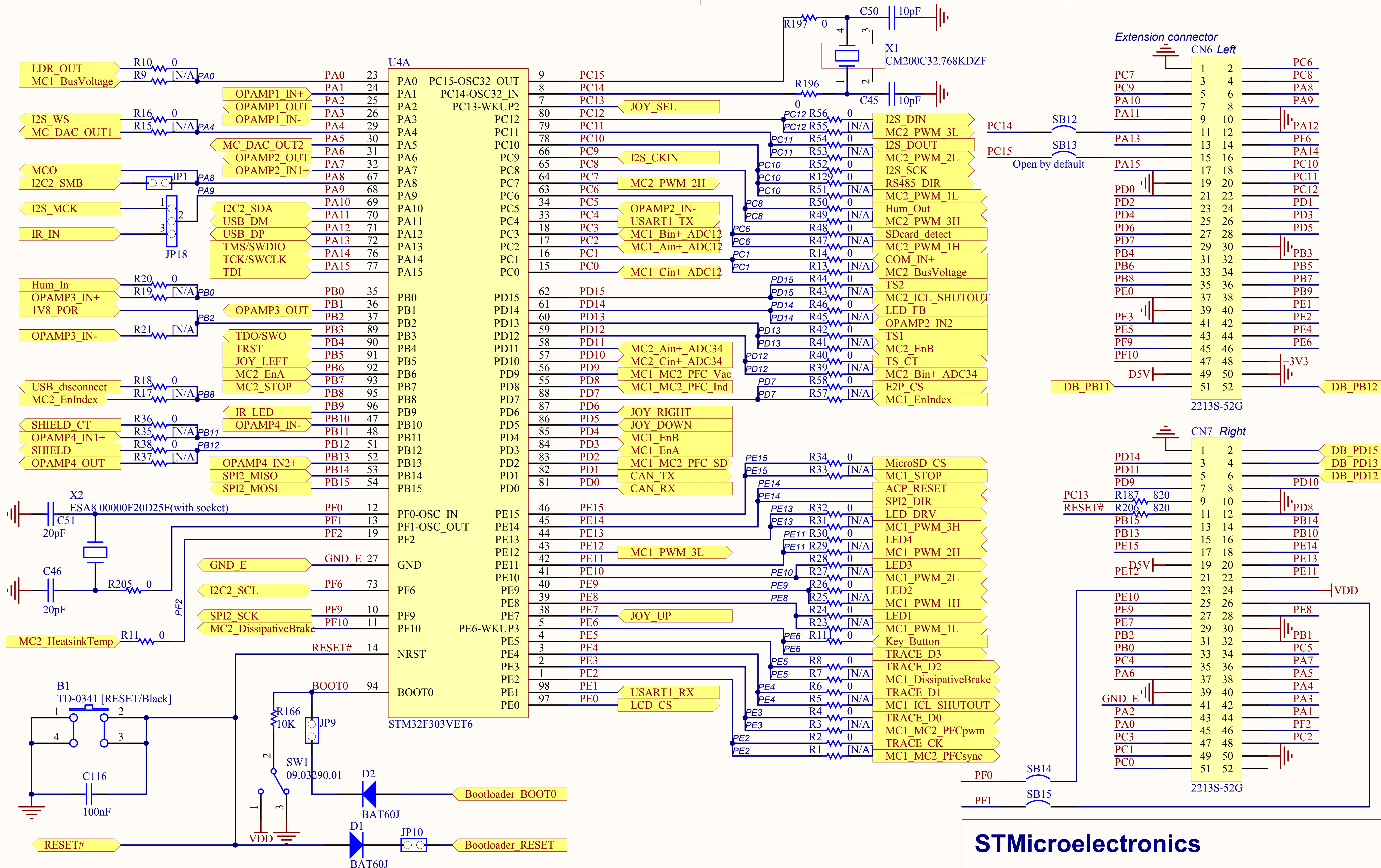
B

C

C

D

D

**STMicroelectronics**

Title:

**STM32303E-EVAL MCU**

Number:MB1019 Rev: C.2

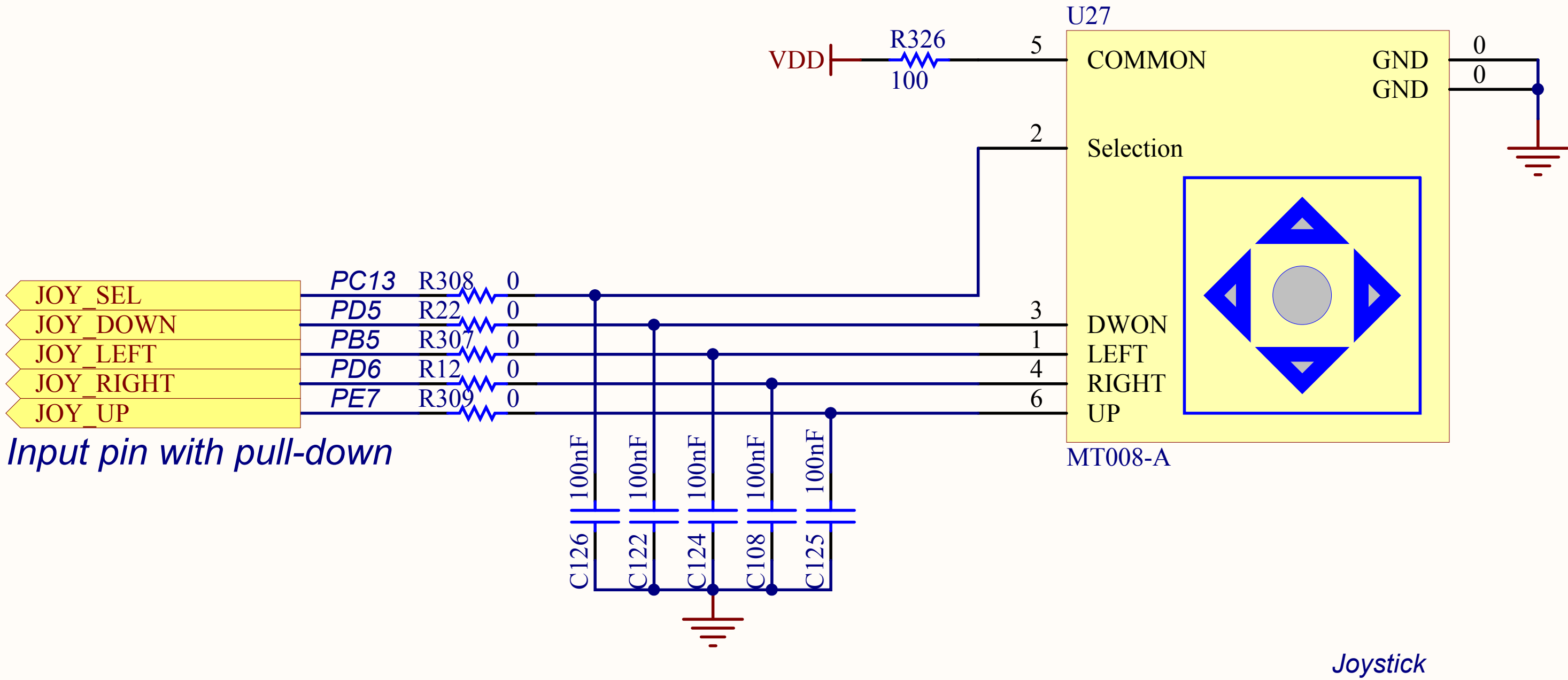
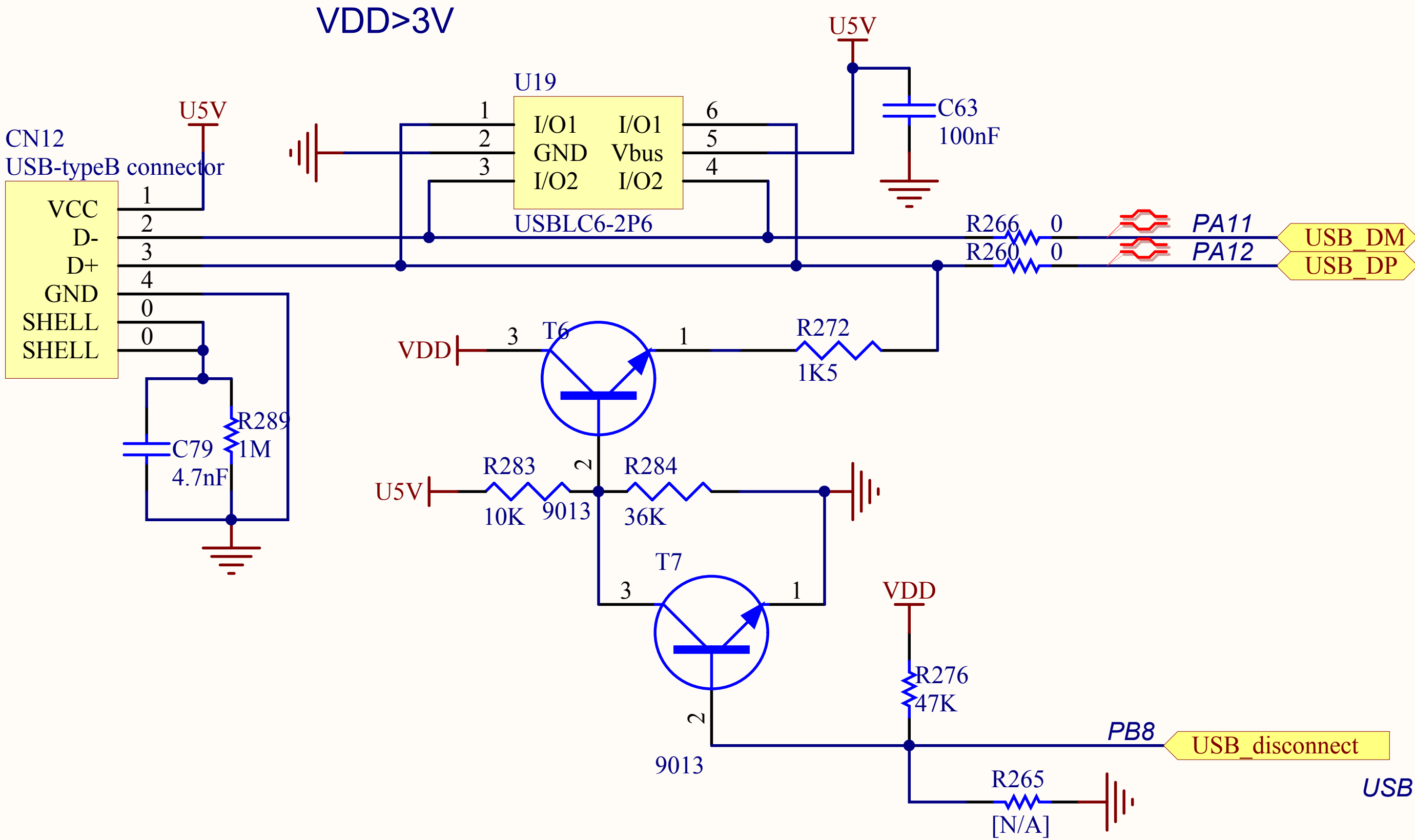
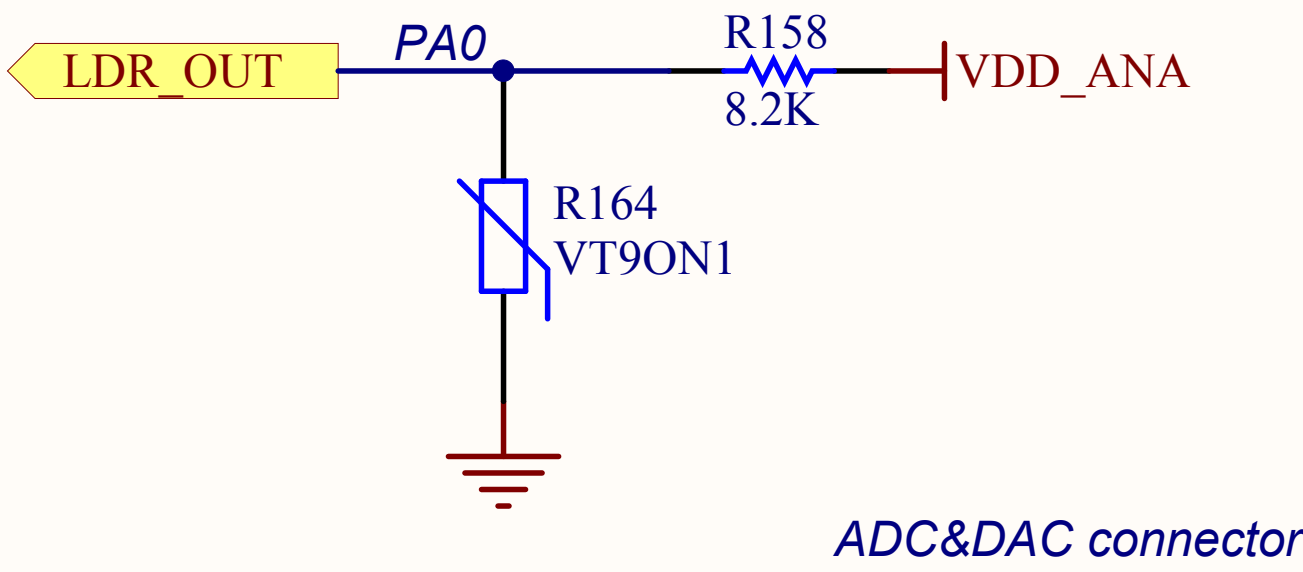
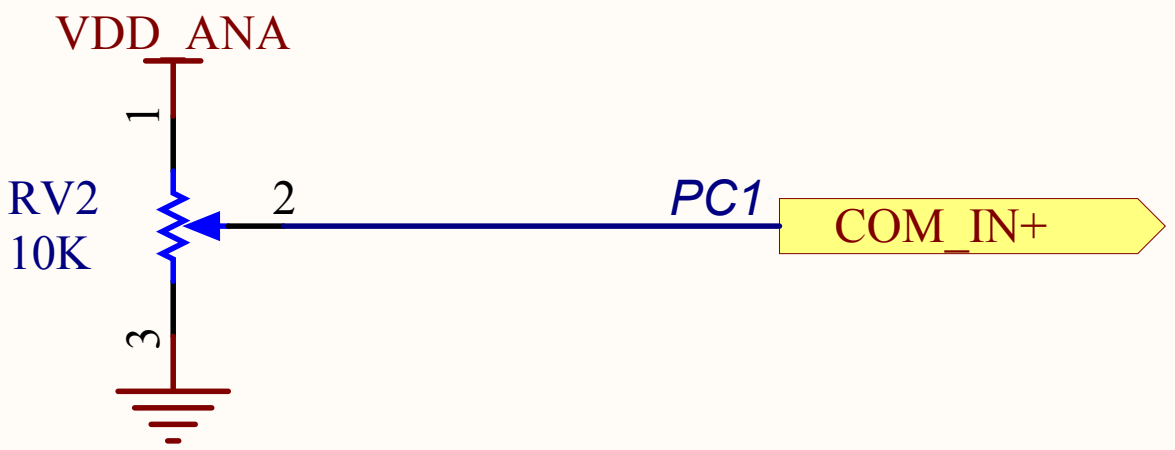
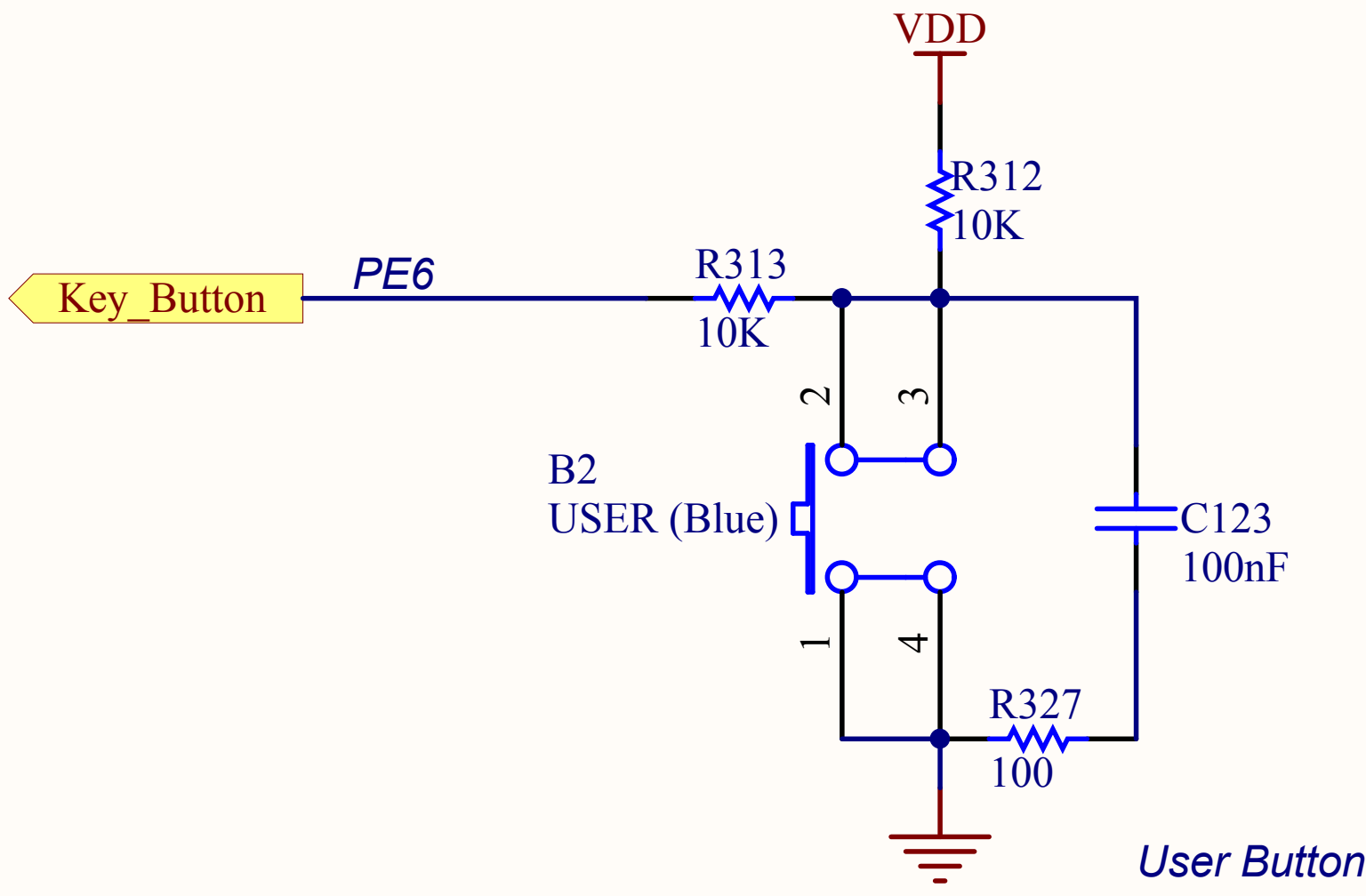
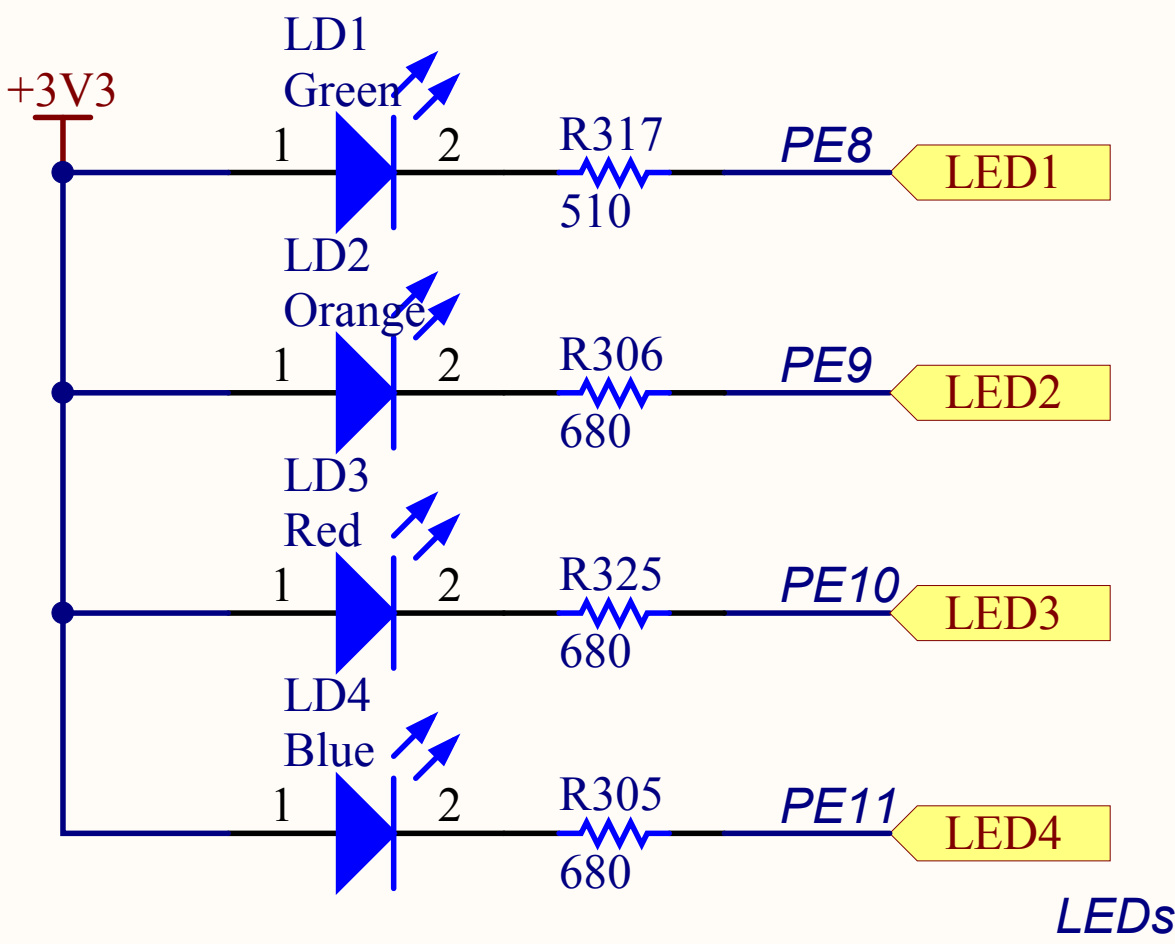
Date:7/22/2014

Sheet2 of 13









STMicroelectronics

Title: STM32303E-EVAL Peripherals

A

A

B

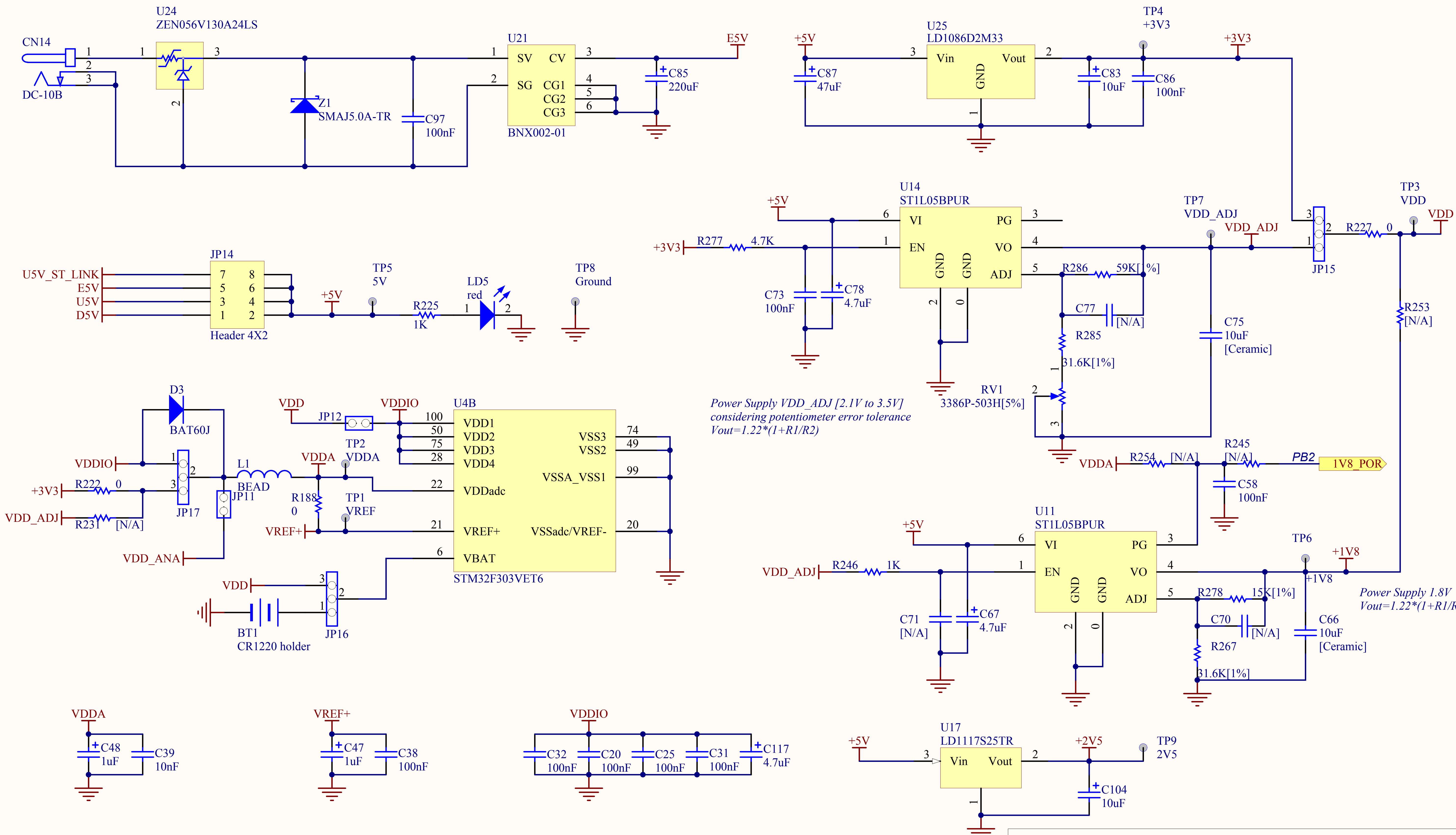
B

C

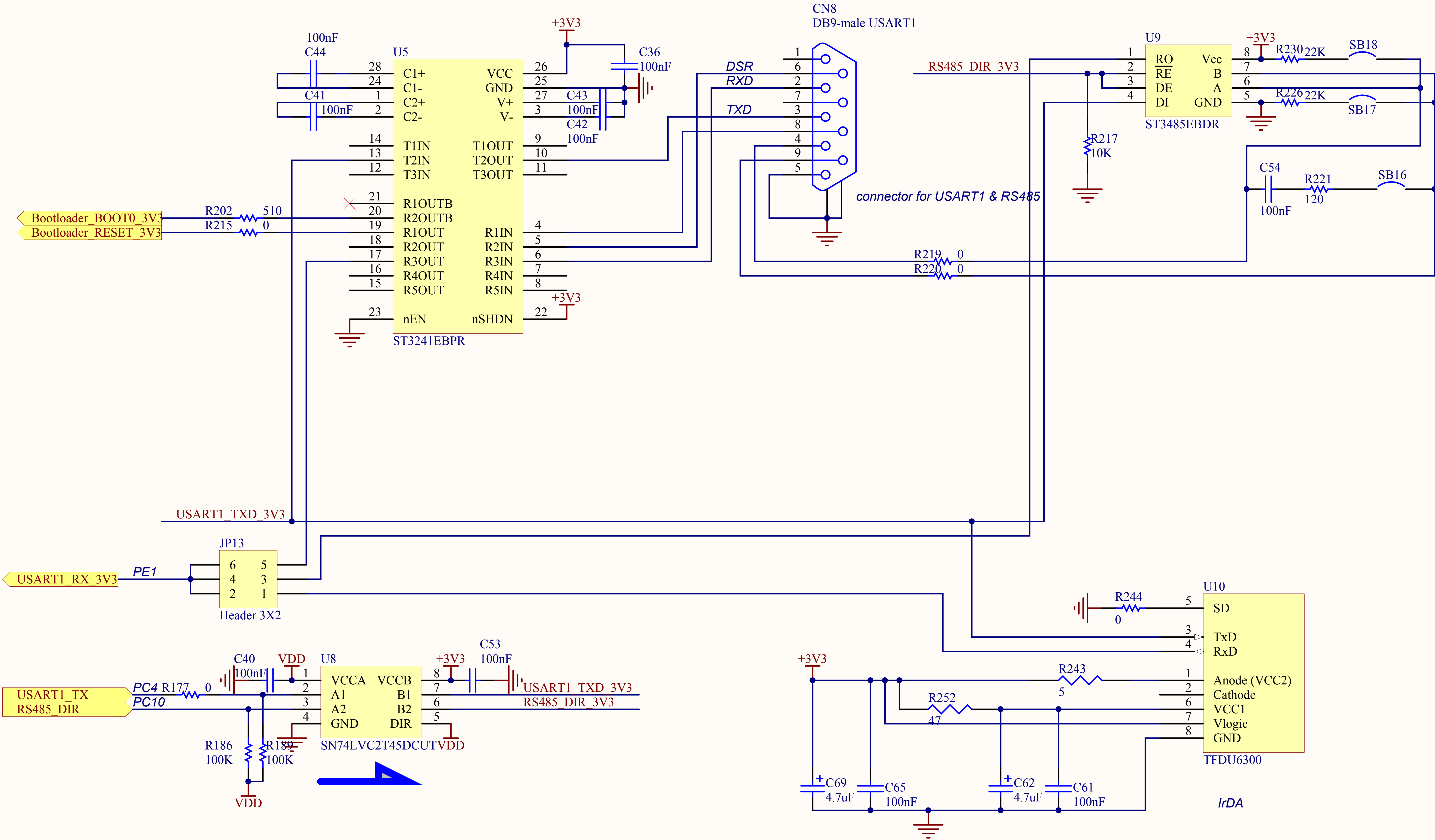
C

D

D

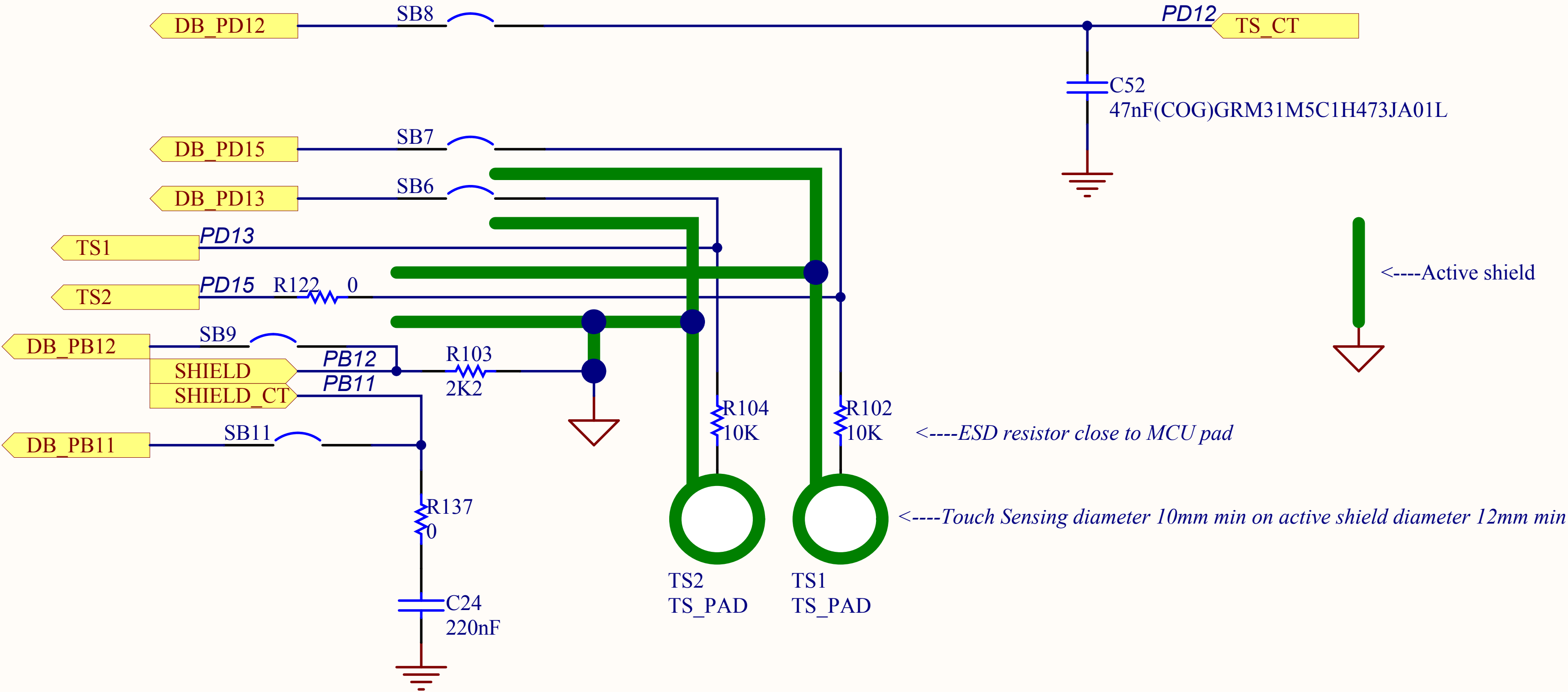












**STMicroelectronics**

Title: *STM32303E-EVAL Touch Sensing*

Number: *MB1019* Rev: *C.2* Date: *7/22/2014* Sheet *13* of *13*