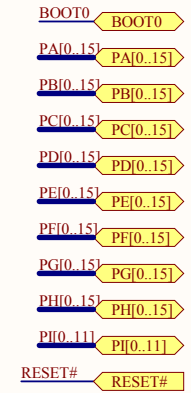
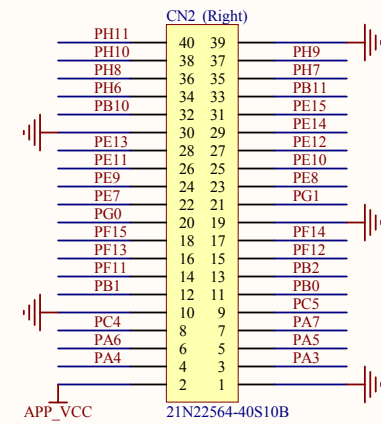
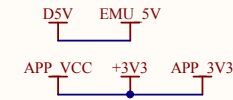
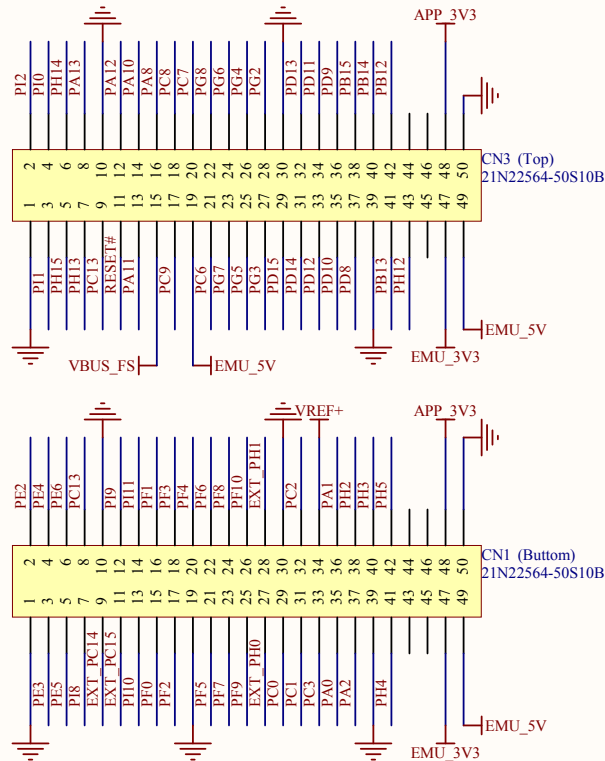
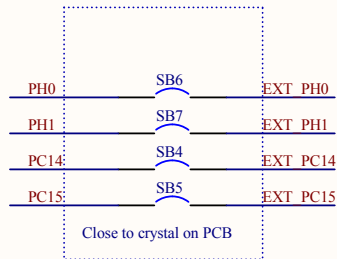
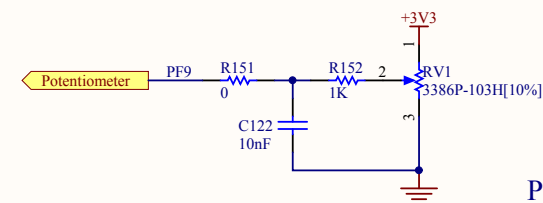
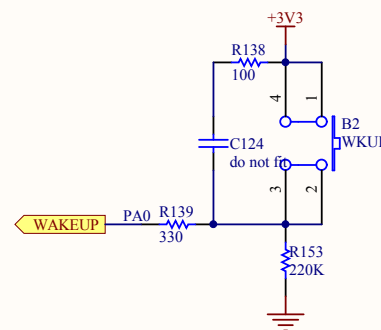
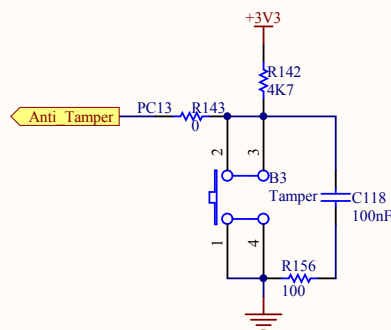
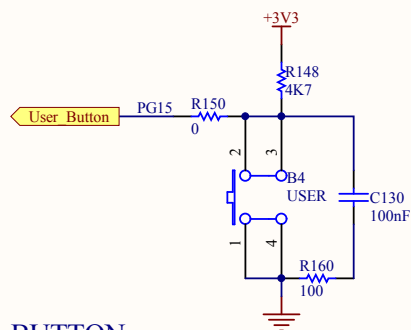
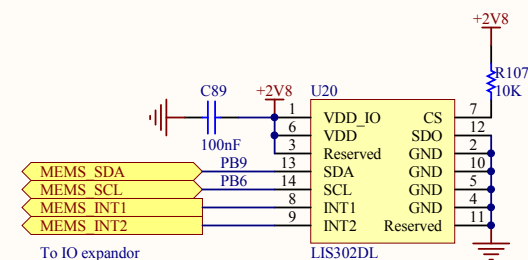
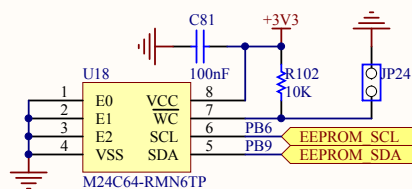
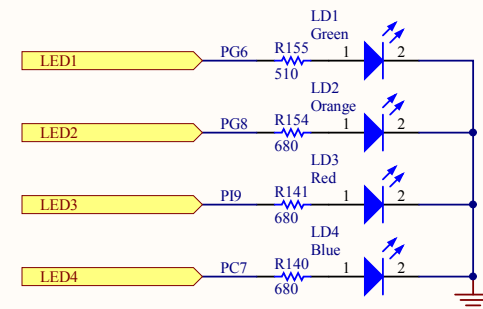
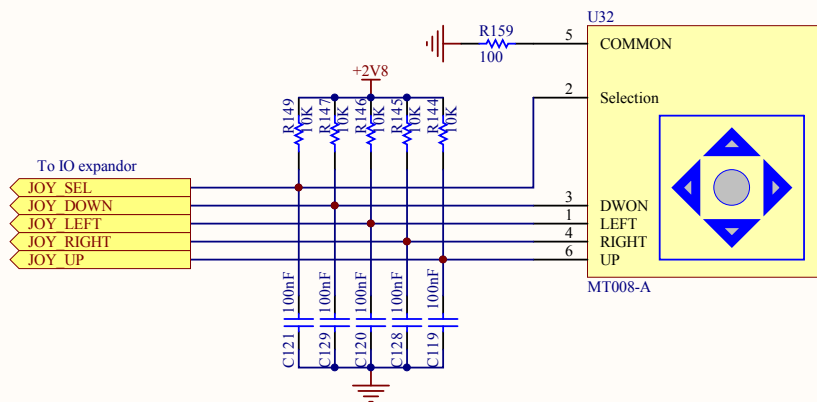


STMicroelectronics

Title: **STM32 20-21-45-46 G-EVAL CAN**

Number: MB786 | Rev: C.2(PCB.SCH) | Date: 11/11/2011 | Sheet 11 of 20

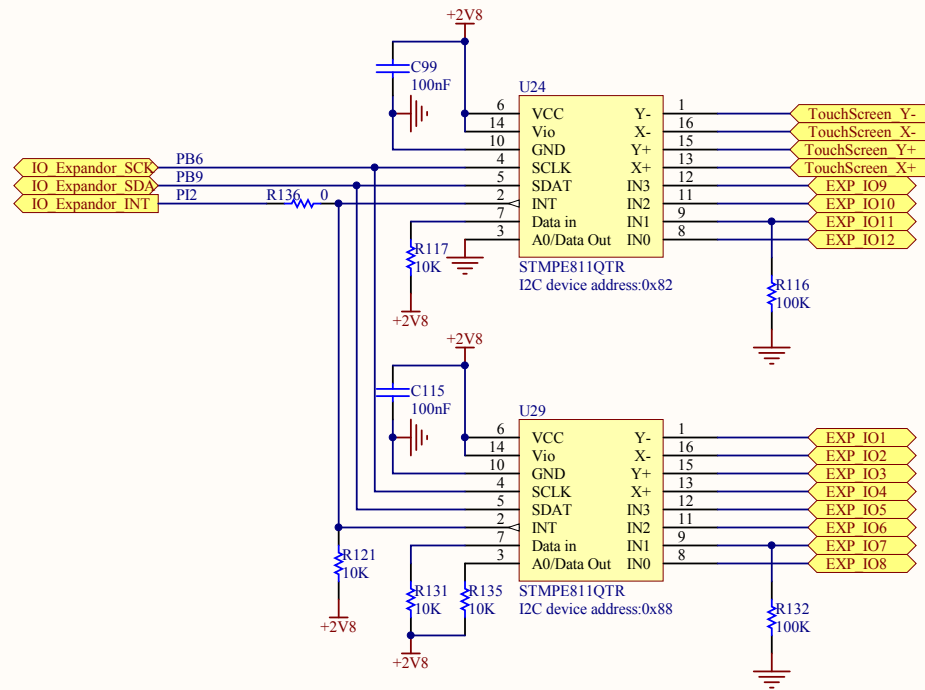




STMicroelectronics

Title: STM32 20-21-45-46 G-EVAL IO Peripherals

Number: MB786 Rev: C.2(PCB.SCH) Date: 11/11/2011 Sheet 12 of 20

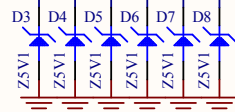


STMicroelectronics

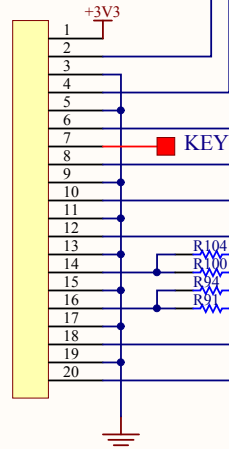
Title: **STM32 20-21-45-46 G-EVAL IO_Expander**

Number: MB786 | Rev: C.2(PCB.SCH) | Date: 11/11/2011 | Sheet 13 of 20

TMS/SWDIO
TCK/SWCLK
TDO/SWO
TDI
TRST
RESET#



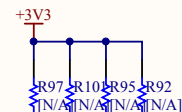
CN13
FTSH-110-01-L-DV



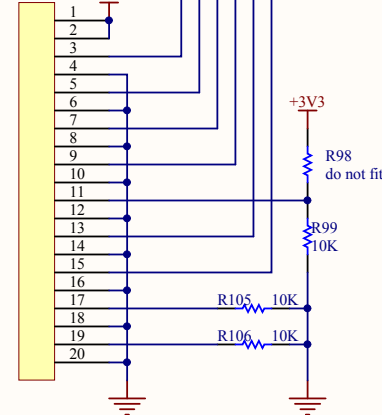
TRACE D3 PE6
TRACE D2 PE5
TRACE D1 PE4
TRACE D0 PE3
TRACE CK PE2

Trace connector

PA13
PA14
PB3
PA15
PB4



CN14
JTAG

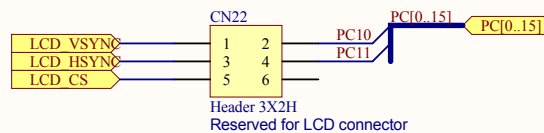
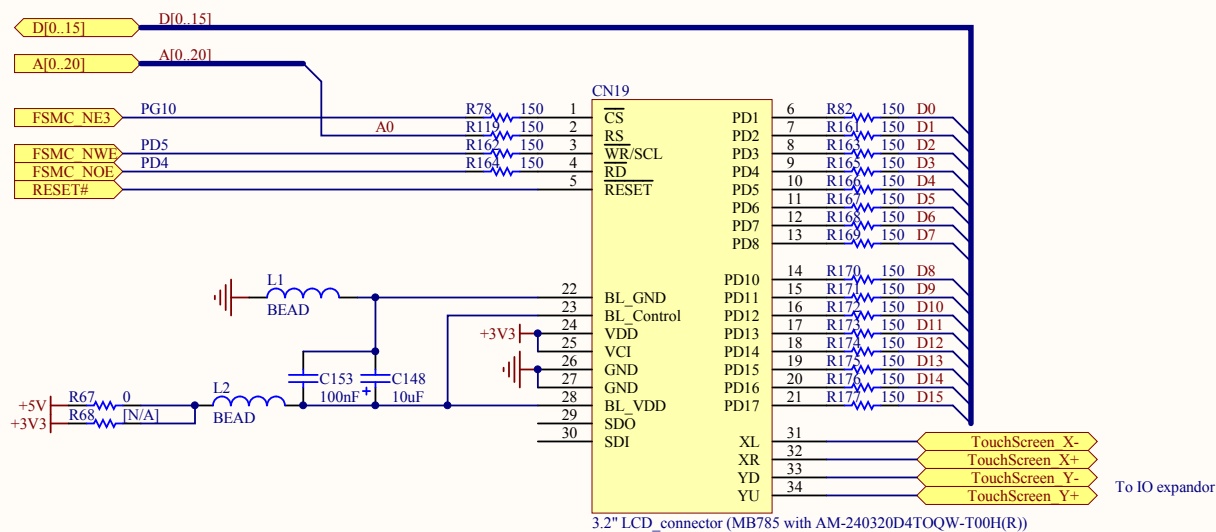


JTAG connector

STMicroelectronics

Title: STM32 20-21-45-46 G-EVAL JTAG & Trace

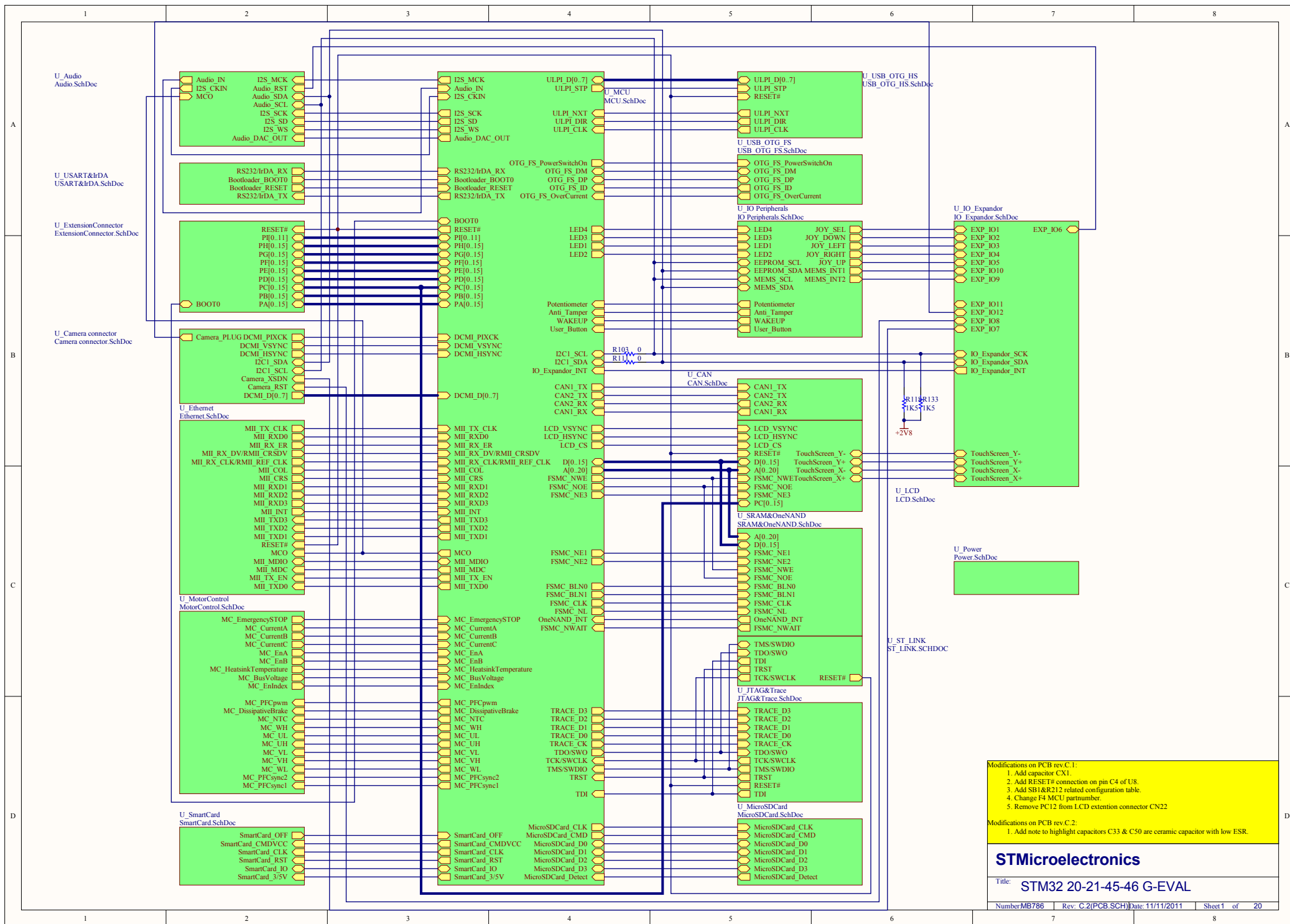
Number: MB786 Rev: C.2(PCB.SCH) Date: 11/11/2011 Sheet 17 of 20

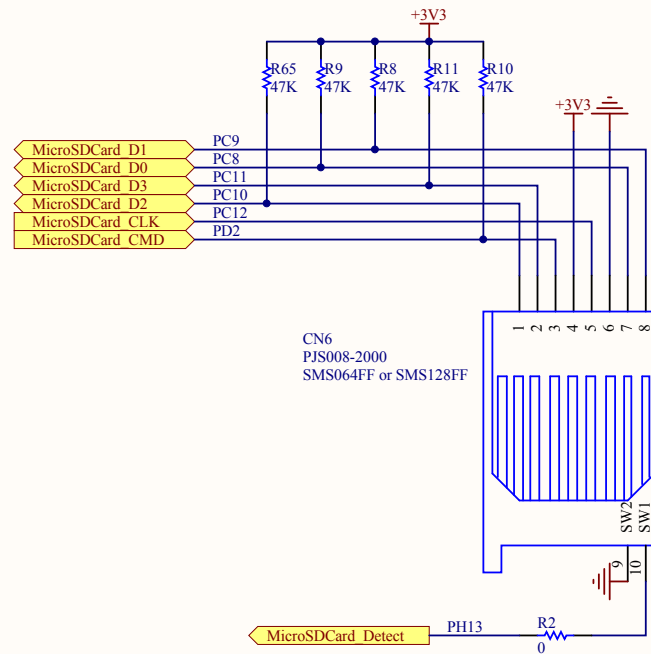


STMicroelectronics

Title: **STM32 20-21-45-46 G-EVAL LCD**

Number: MB786 Rev: C.2(PCB.SCH) Date: 11/11/2011 Sheet 9 of 20





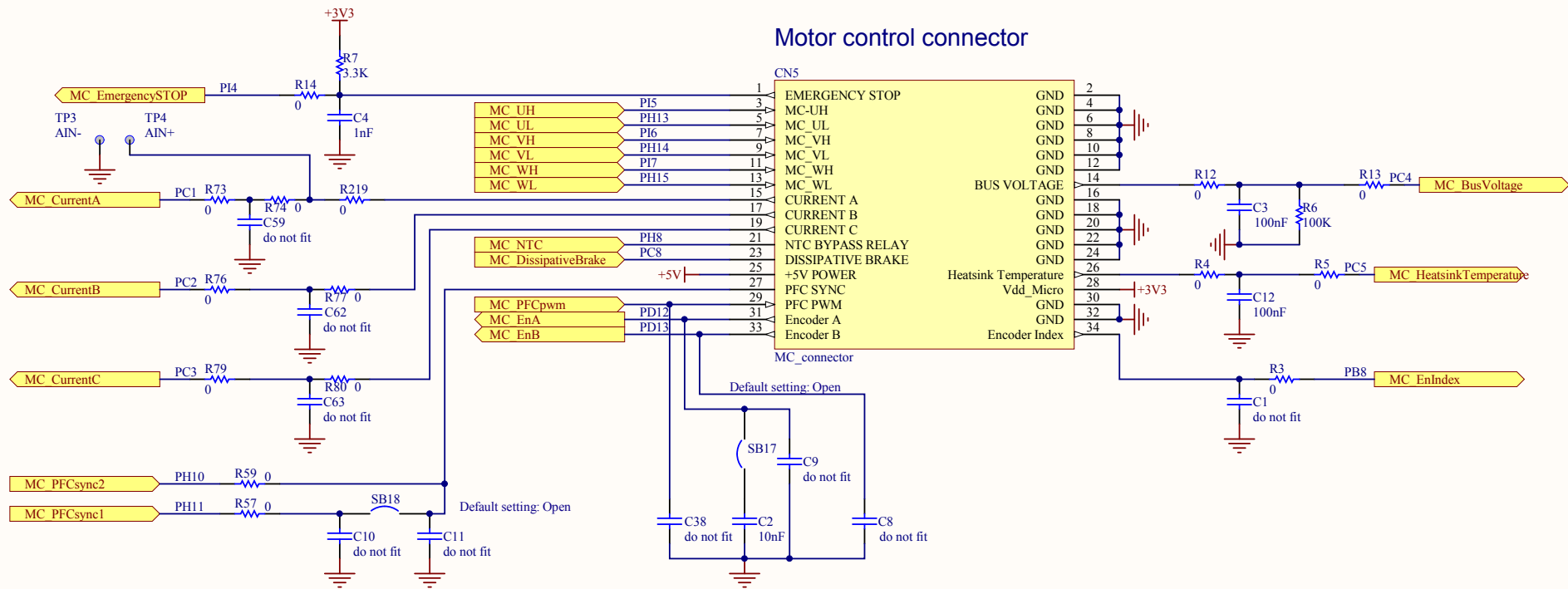
MicroSD card

STMicroelectronics

Title: **STM32 20-21-45-46 G-EVAL MicroSD card**

Number: MB786 | Rev: C.2(PCB.SCH) | Date: 11/11/2011 | Sheet 14 of 20

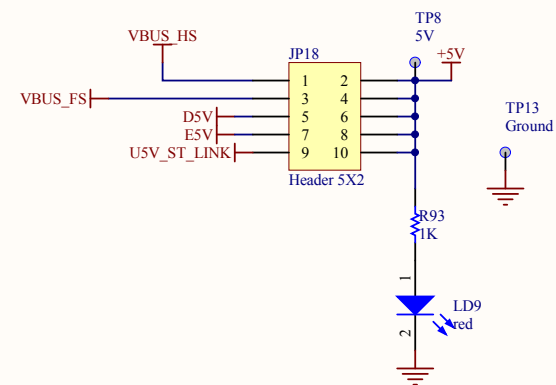
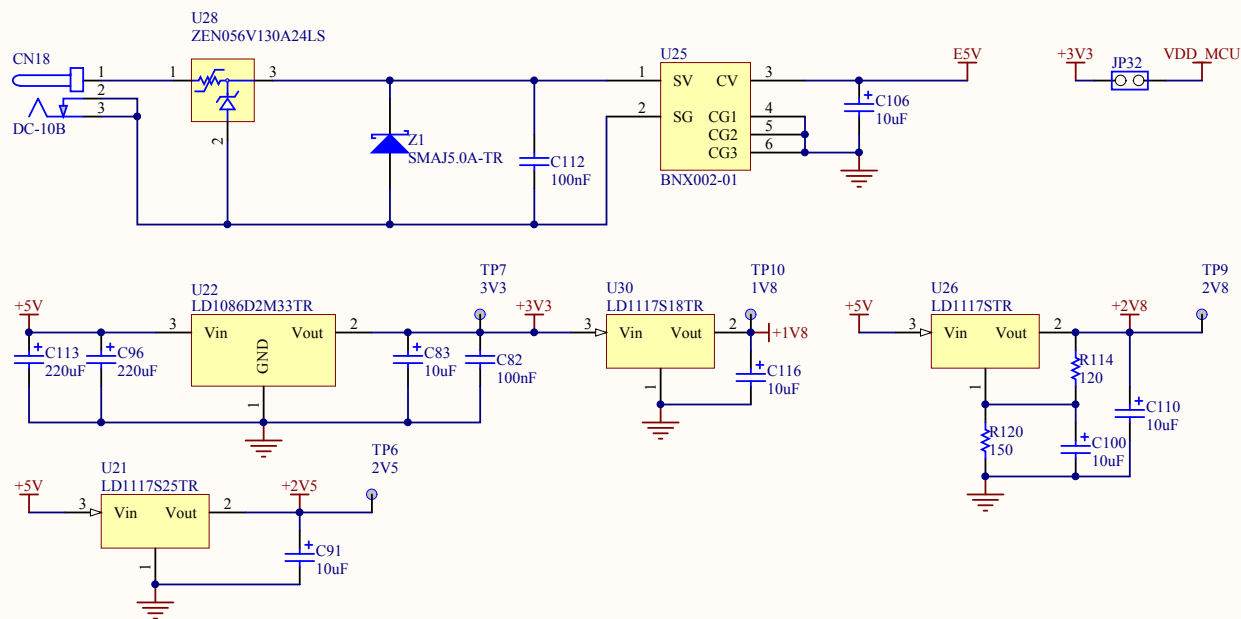
Motor control connector



STMicroelectronics

Title: **STM32 20-21-45-46 G-EVAL Motor control**

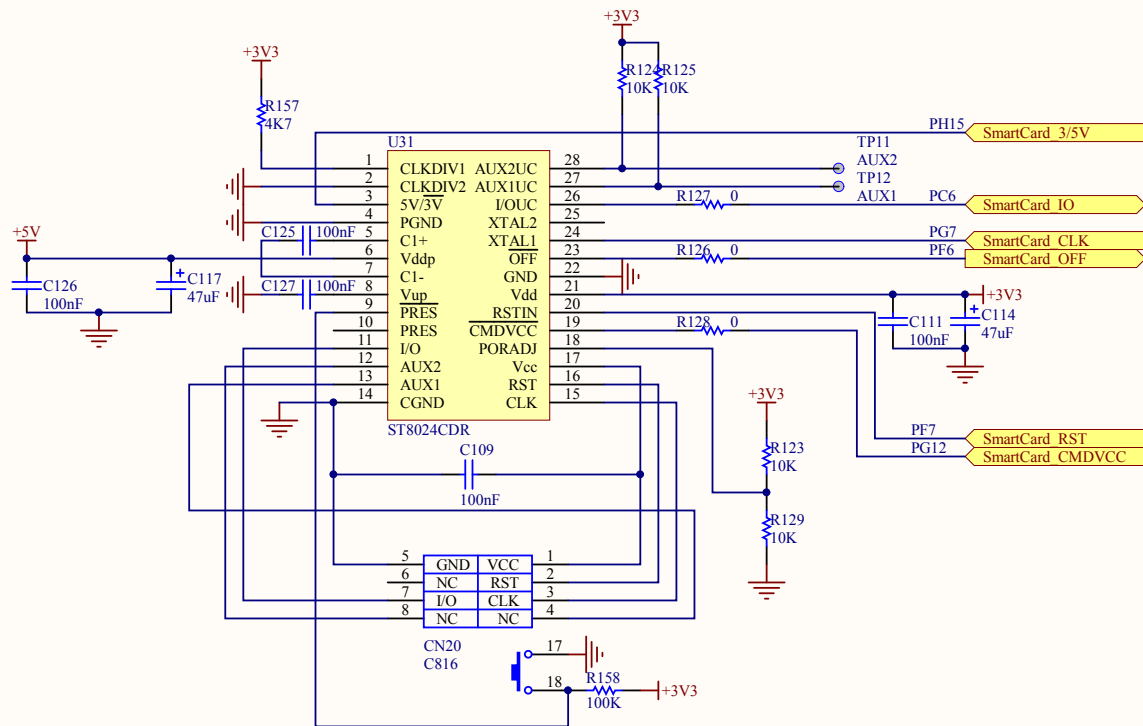
Number: MB786 Rev: C.2(PCB.SCH) Date: 11/11/2011 Sheet 15 of 20



STMicroelectronics

Title: **STM32 20-21-45-46 G-EVAL Power**

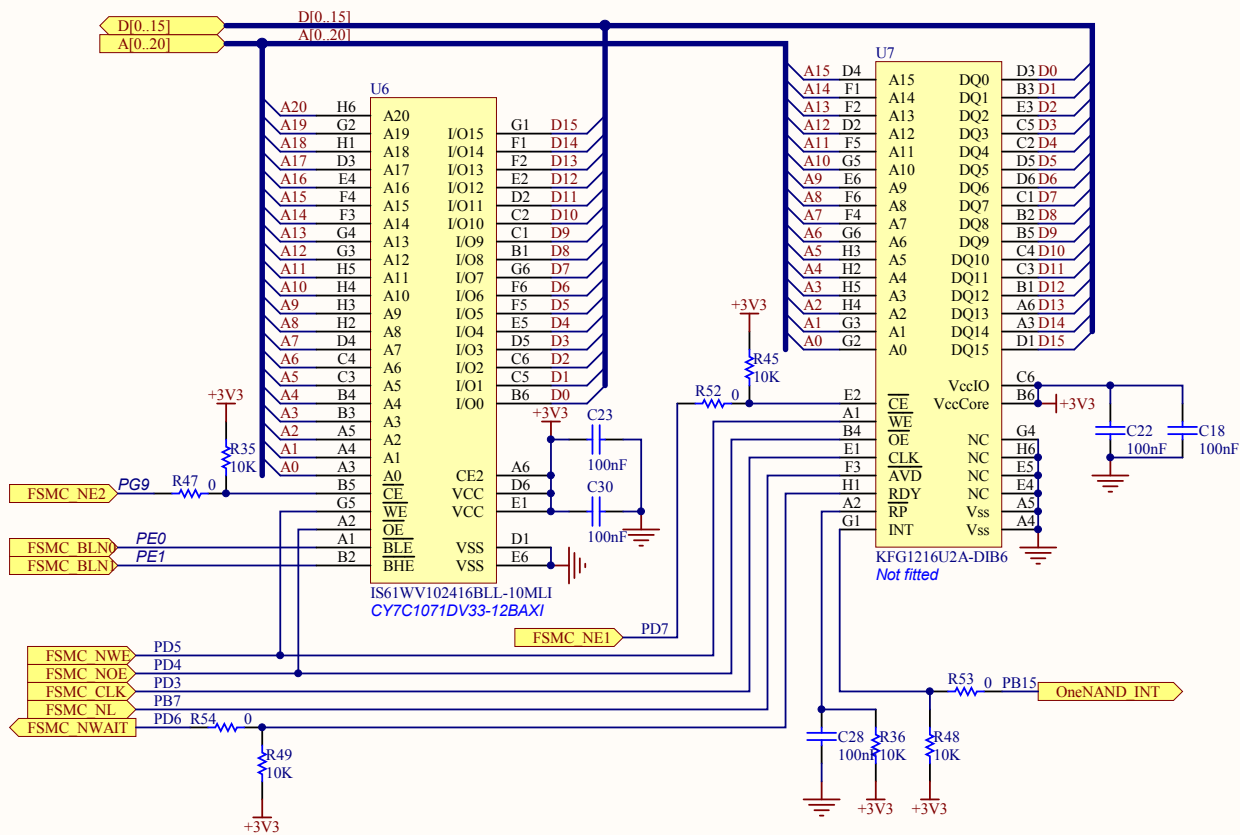
Number: MB786 Rev: C.2(PCB.SCH) Date: 11/11/2011 Sheet 18 of 20



STMicroelectronics

Title: STM32 20-21-45-46 G-EVAL Smart card

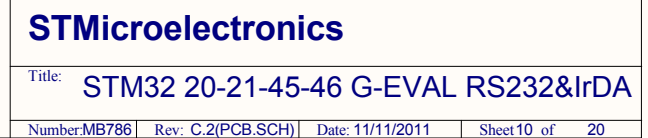
Number: MB786 Rev: C.2(PCB.SCH) Date: 11/11/2011 Sheet 16 of 20

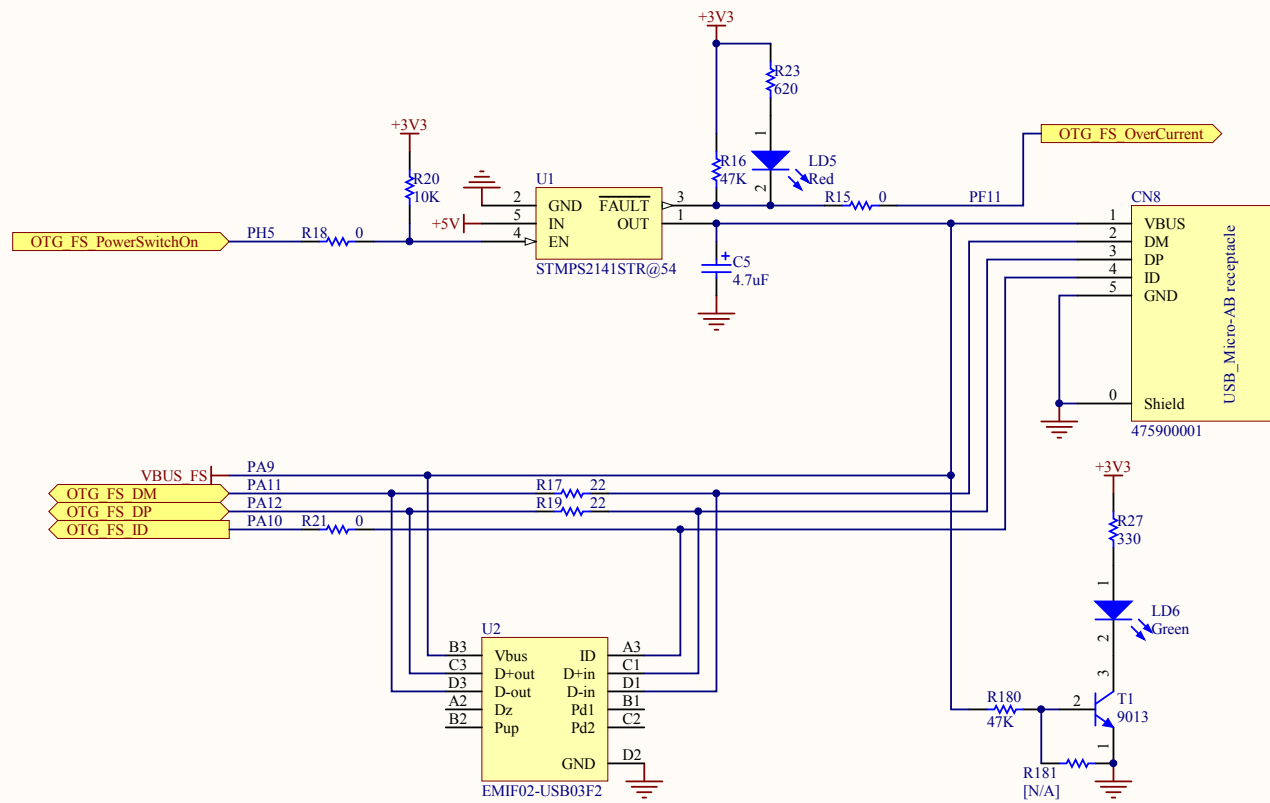


STMicroelectronics

Title: STM32 20-21-45-46 G-EVAL SRAM & OneNAND

Number: MB786 Rev: C.2(PCB.SCH) Date: 11/11/2011 Sheet 8 of 20

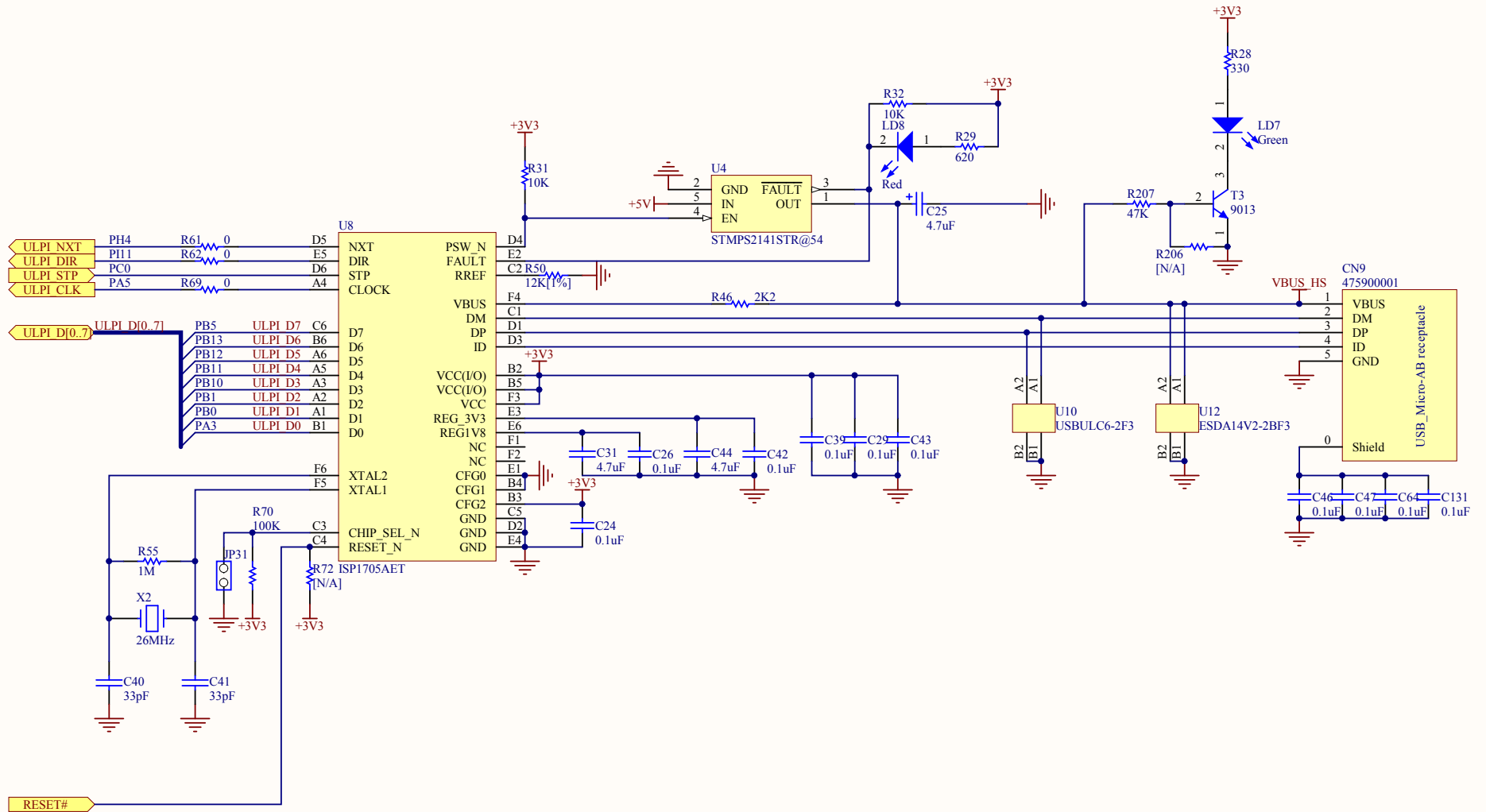




STMicroelectronics

Title: STM32 20-21-45-46 G-EVAL USB_OTG_FS

Number: MB786 Rev: C.2(PCB.SCH) Date: 11/11/2011 Sheet 7 of 20



STMicroelectronics

Title: **STM32 20-21-45-46 G-EVAL USB OTG HS**

Number: MB786 Rev: C.2(PCB.SCH) Date: 11/11/2011 Sheet 3 of 20