

# STM32WL3 - QFN48 - 4-Layers - SMD

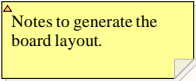
MB2218

## Table of contents

- Sheet 1: Project overview (this page)
- Sheet 2: Top
- Sheet 3: STM32 microcontroller I/Os
- Sheet 4: Supply
- Sheet 5 : RF front-end

## Legend

- General comment such as function title, configuration, ...
- Text to be added to silkscreen.
- Warning text.



## Open Platform License Agreement

The Open Platform License Agreement (“Agreement”) is a binding legal contract between you (“You”) and STMicroelectronics International N.V. (“ST”), a company incorporated under the laws of the Netherlands acting for the purpose of this Agreement through its Swiss branch 39, Chemin du Champ des Filles, 1228 Plan-les-Ouates, Geneva, Switzerland.

By using the enclosed reference designs, schematics, PC board layouts, and documentation, in hardcopy or CAD tool file format (collectively, the “Reference Material”), You are agreeing to be bound by the terms and conditions of this Agreement. Do not use the Reference Material until You have read and agreed to this Agreement terms and conditions. The use of the Reference Material automatically implies the acceptance of the Agreement terms and conditions.

The complete Open Platform License Agreement can be found on [www.st.com/opla](http://www.st.com/opla).

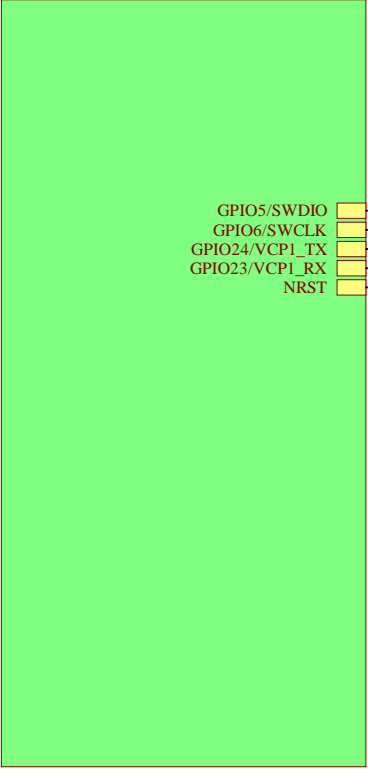
U\_Top  
Top.SchDoc



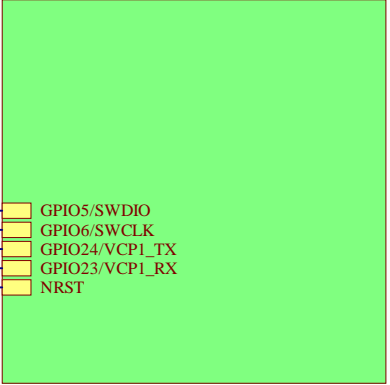
Title: <b>Project Overview</b>		
Project: <b>STM32WL3 - QFN48 - 4-Layers - SMD</b>		
Variant: 868MHz_16dBm		
Revision: A-01	Reference: MB2218	
Size: A4	Date: 12/02/2024	Sheet: 1 of 5



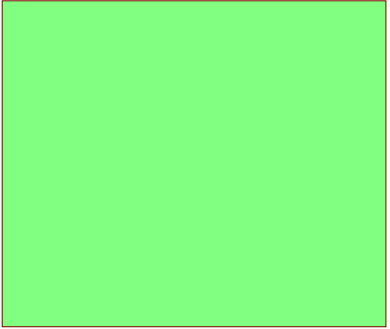
Designator  
MCU\_IOs.SchDoc



Designator  
Supply.SchDoc



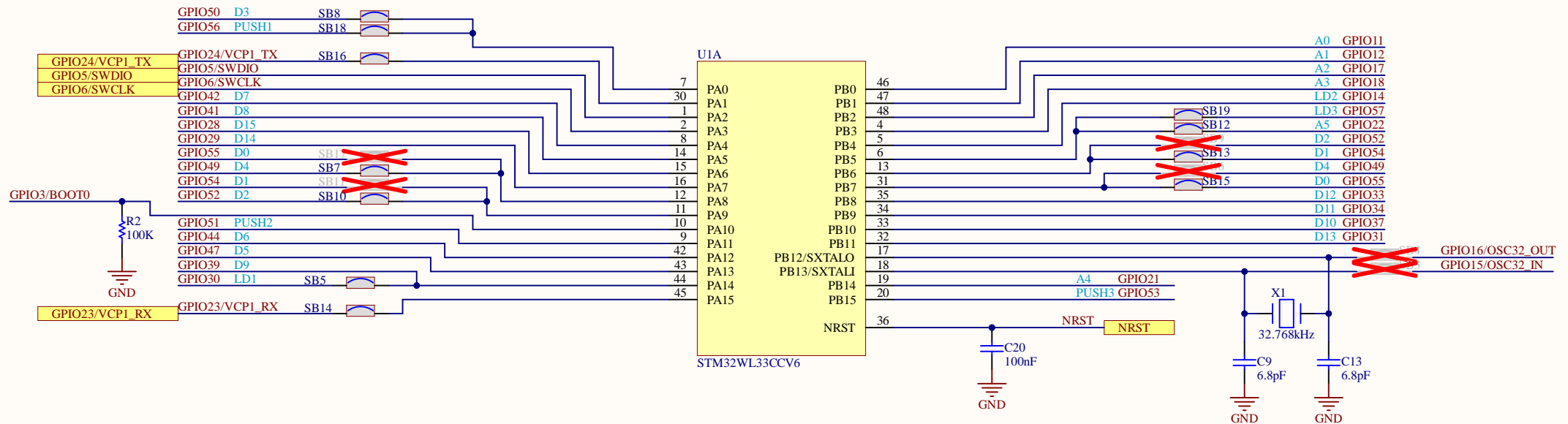
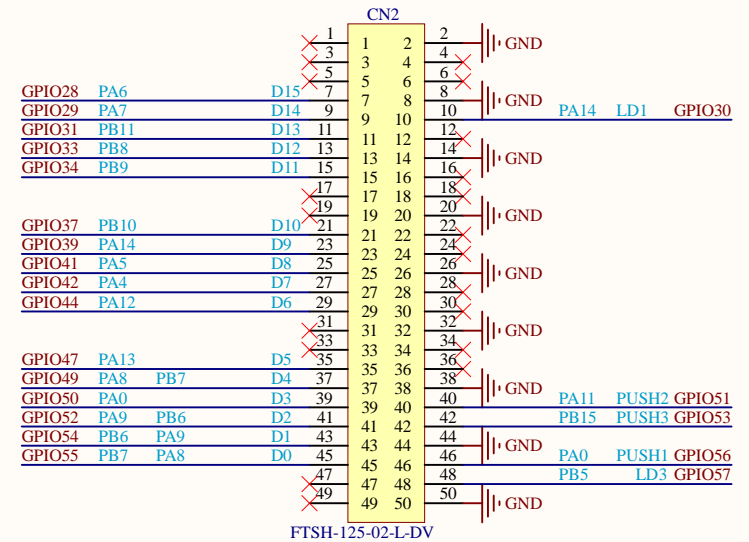
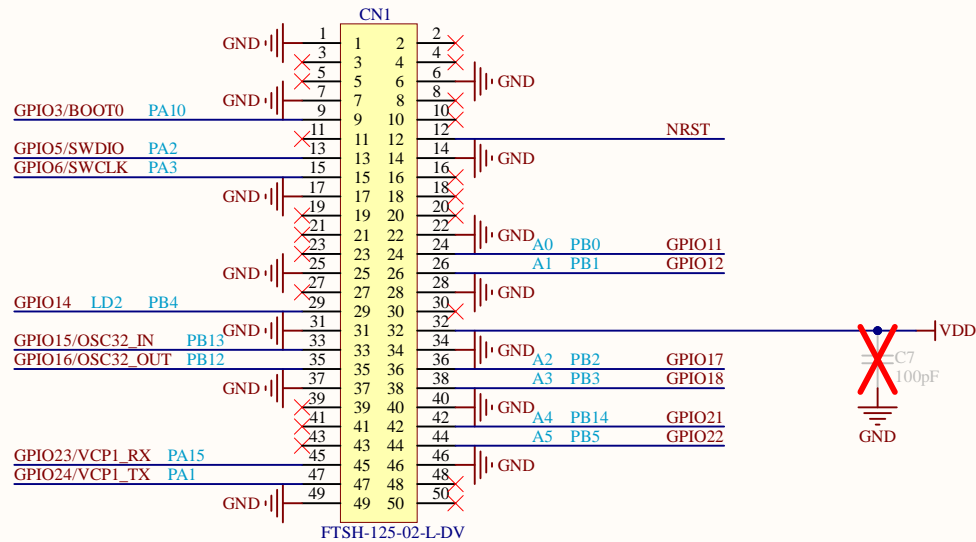
Designator  
RF.SchDoc

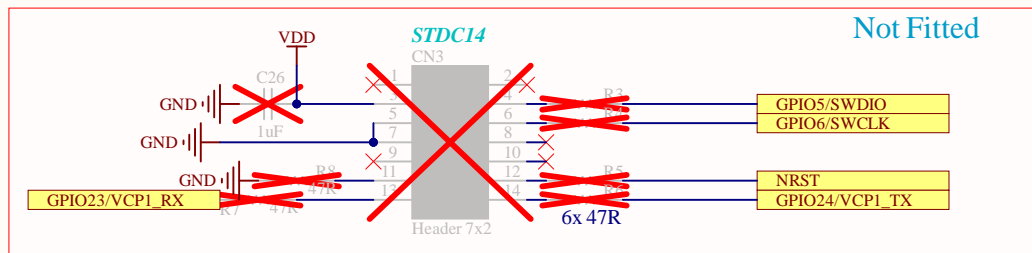
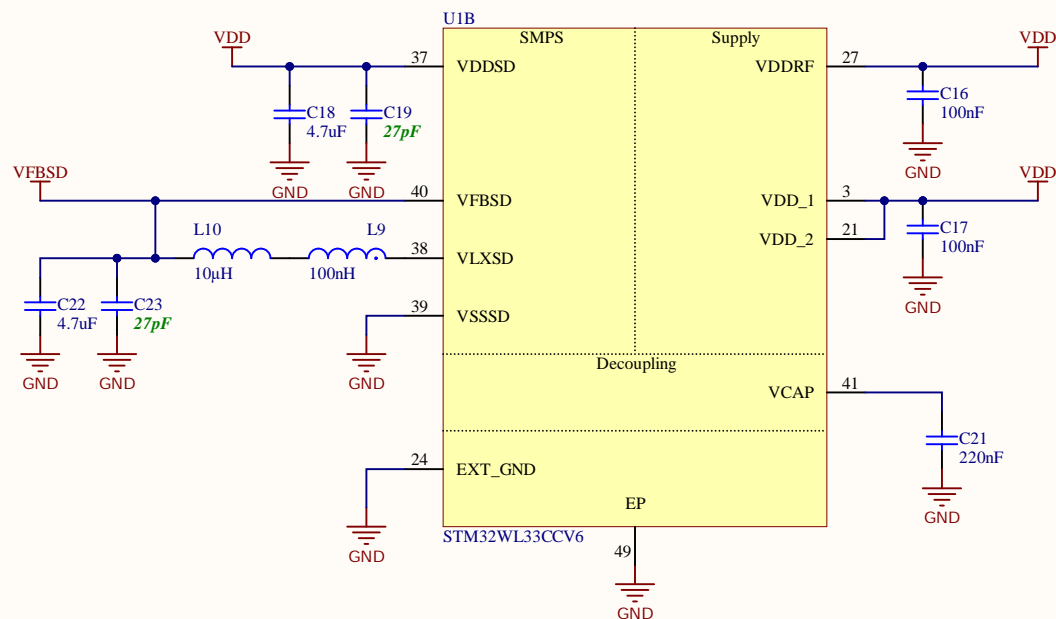


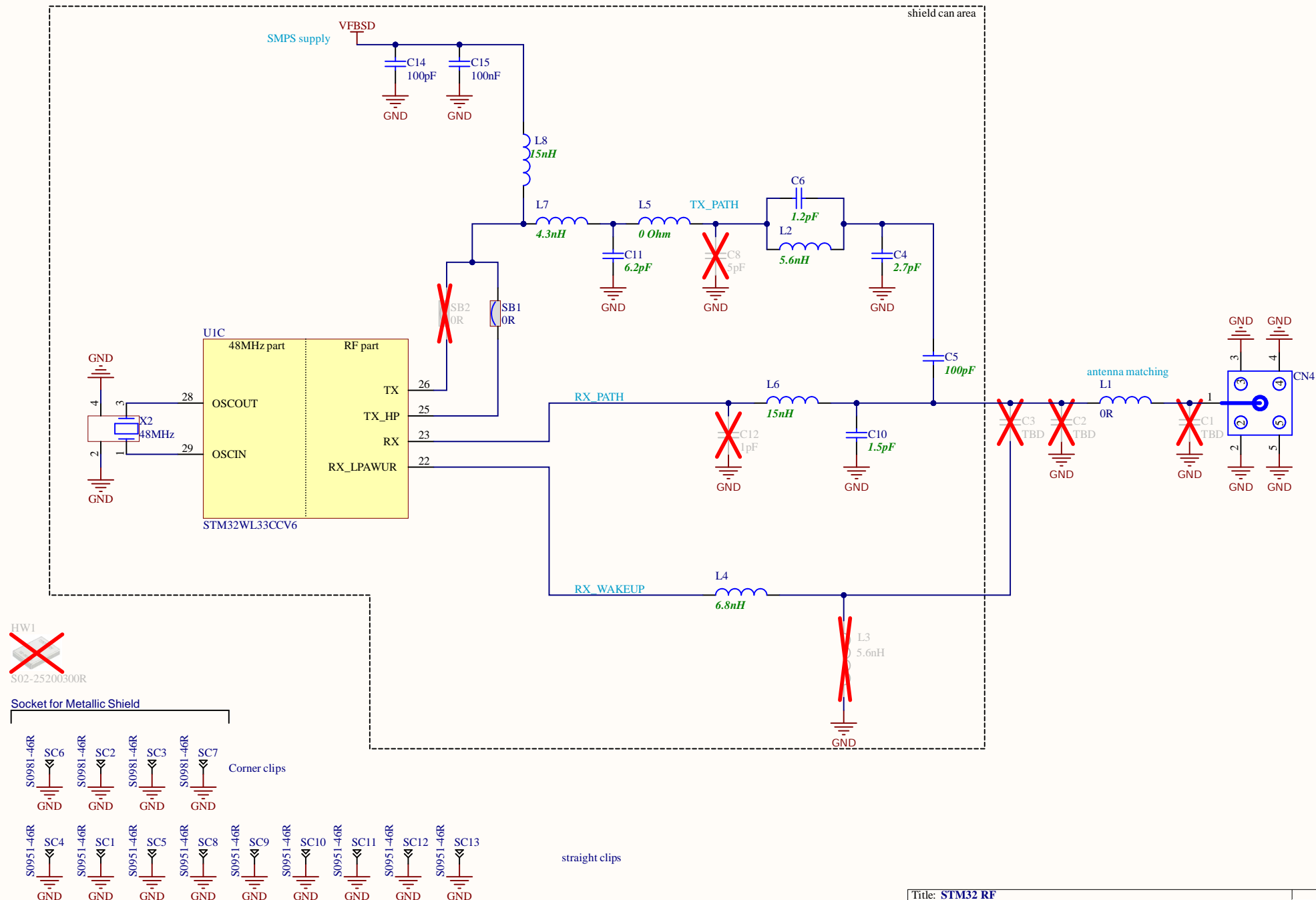
GPIO5/SWDIO  
GPIO6/SWCLK  
GPIO24/VCP1\_TX  
GPIO23/VCP1\_RX  
NRST

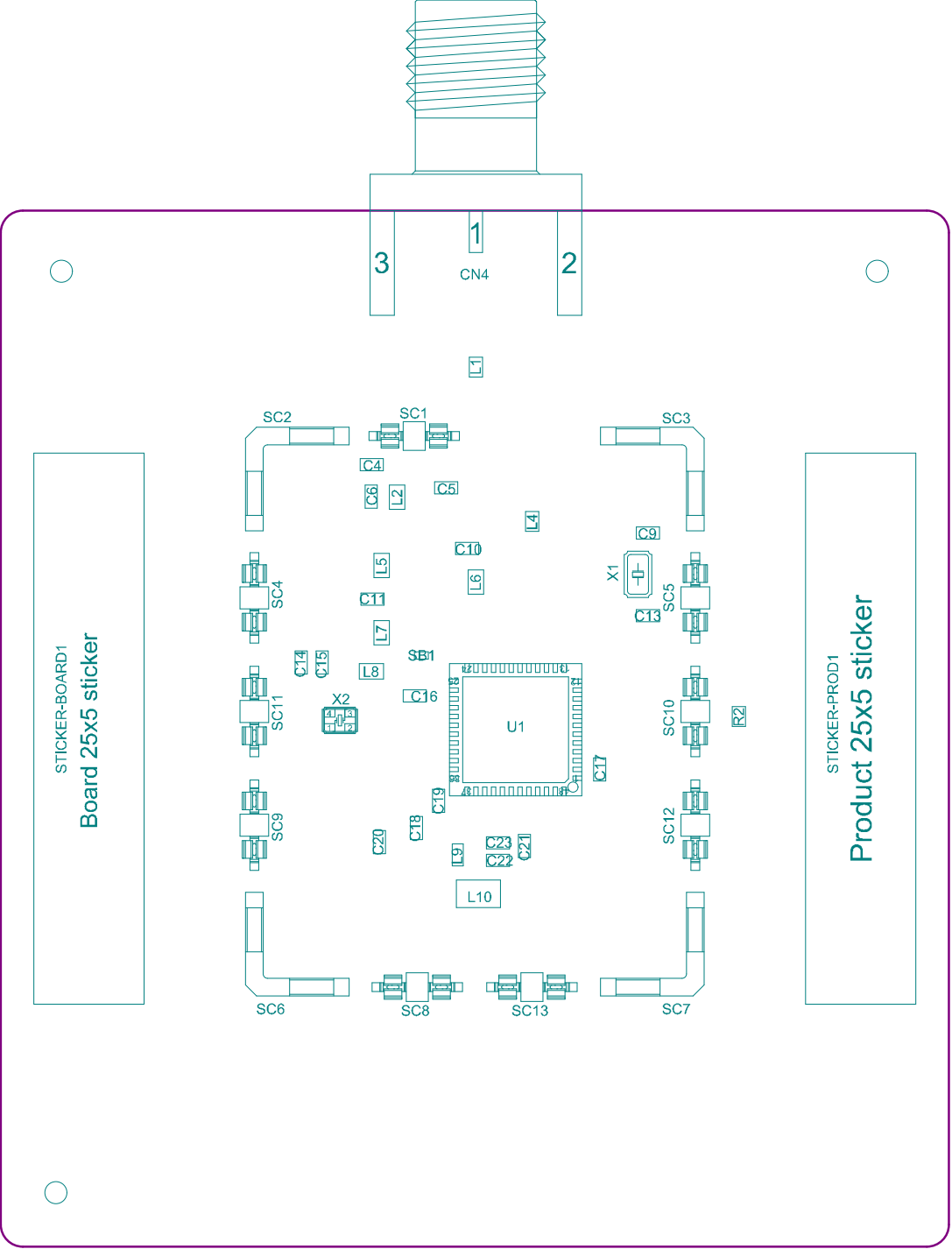
GPIO5/SWDIO  
GPIO6/SWCLK  
GPIO24/VCP1\_TX  
GPIO23/VCP1\_RX  
NRST











Project: STM32WL3 - QFN48 - 4-Layers - SMD

Layer: M14-Top Assembly

Variant: 868MHz\_16dBm

Date: 12/02/2024

Gerber: .GM14

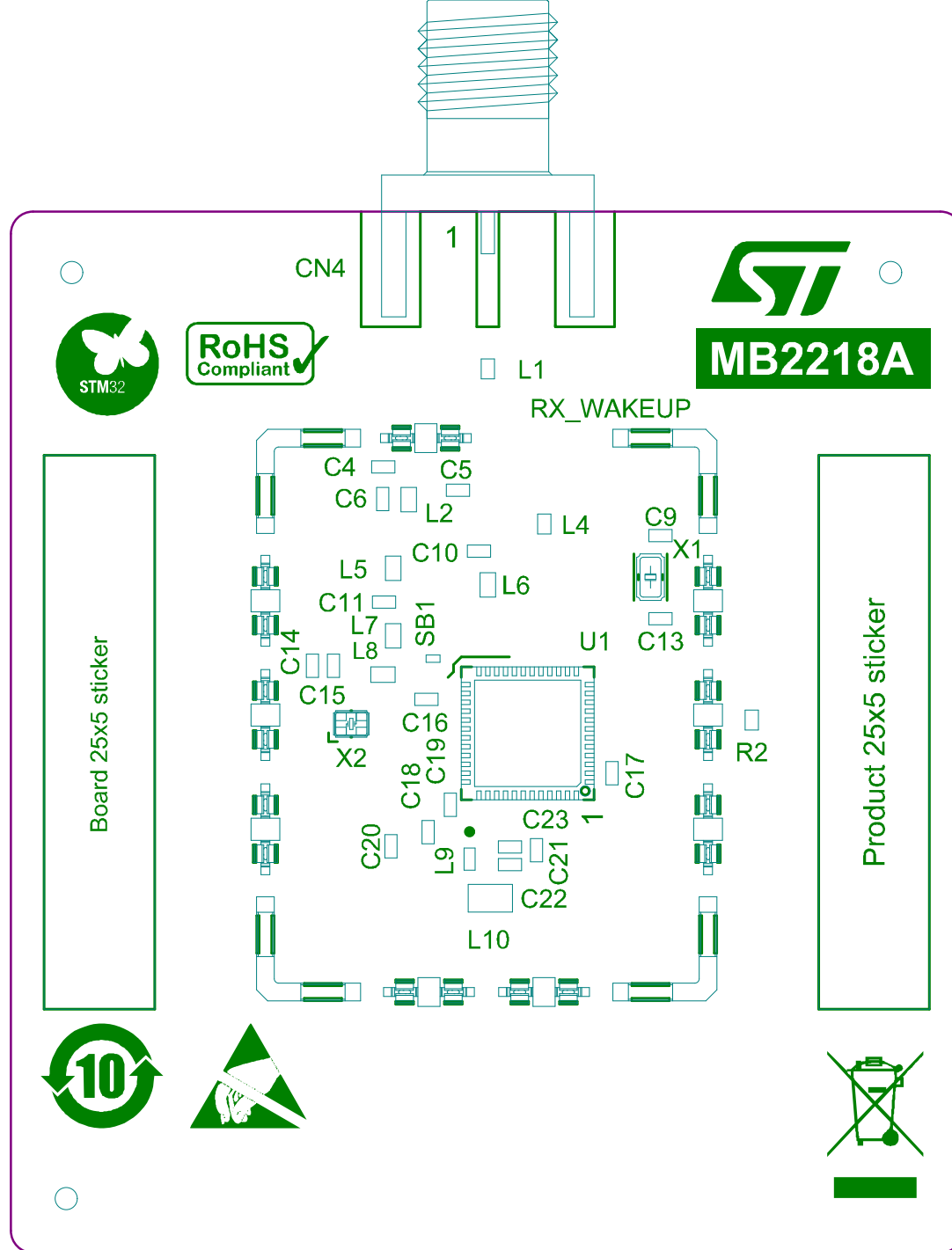
Ref: MB2218

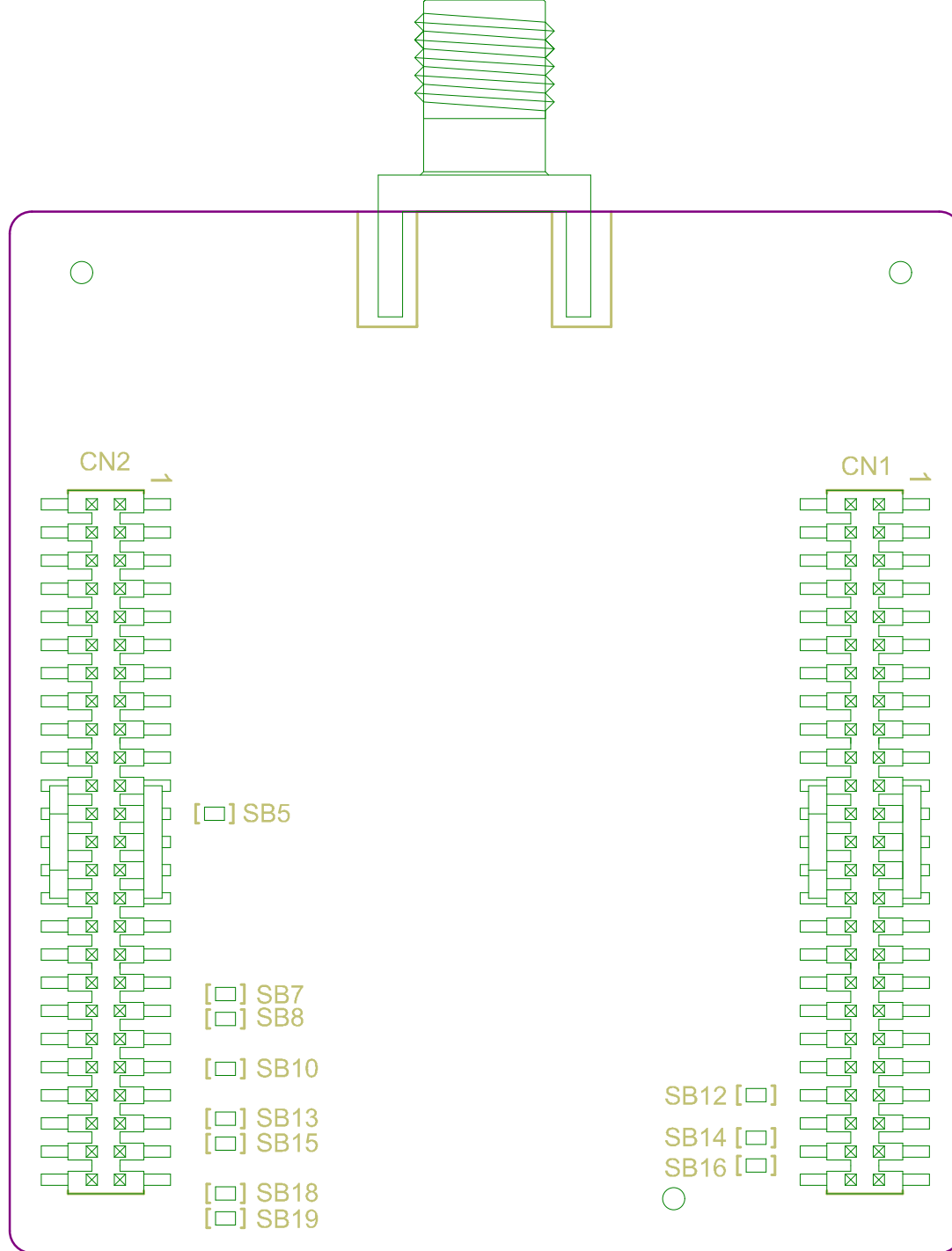
Rev: A











Bottom Overlay

.GBO