

STM32WL3 - QFN48 - 4-Layers - SMD

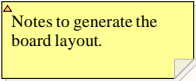
MB2218

Table of contents

- Sheet 1: Project overview (this page)
- Sheet 2: Top
- Sheet 3: STM32 microcontroller I/Os
- Sheet 4: Supply
- Sheet 5 : RF front-end

Legend

- General comment such as function title, configuration, ...
- Text to be added to silkscreen.
- Warning text.



Open Platform License Agreement

The Open Platform License Agreement (“Agreement”) is a binding legal contract between you (“You”) and STMicroelectronics International N.V. (“ST”), a company incorporated under the laws of the Netherlands acting for the purpose of this Agreement through its Swiss branch 39, Chemin du Champ des Filles, 1228 Plan-les-Ouates, Geneva, Switzerland.

By using the enclosed reference designs, schematics, PC board layouts, and documentation, in hardcopy or CAD tool file format (collectively, the “Reference Material”), You are agreeing to be bound by the terms and conditions of this Agreement. Do not use the Reference Material until You have read and agreed to this Agreement terms and conditions. The use of the Reference Material automatically implies the acceptance of the Agreement terms and conditions.

The complete Open Platform License Agreement can be found on www.st.com/opla.

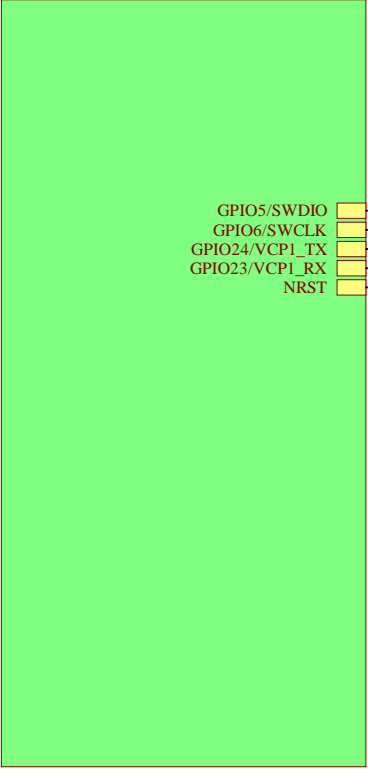
U_Top
Top.SchDoc



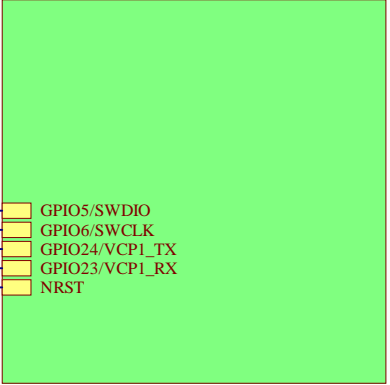
Title: Project Overview		
Project: STM32WL3 - QFN48 - 4-Layers - SMD		
Variant: 868MHz_10dBm		
Revision: A-01		Reference: MB2218
Size: A4	Date: 12/02/2024	Sheet: 1 of 5



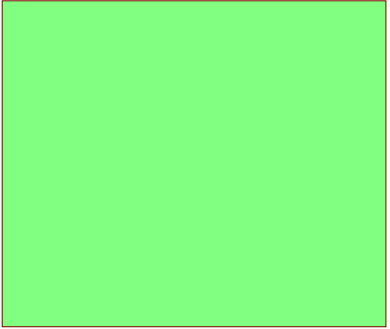
Designator
MCU_IOs.SchDoc



Designator
Supply.SchDoc



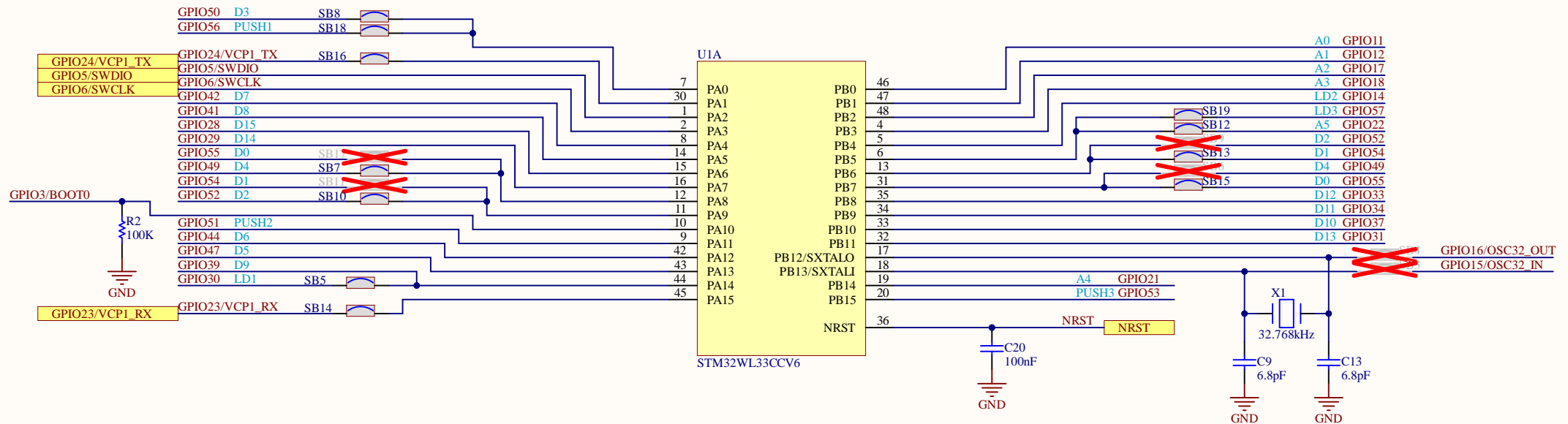
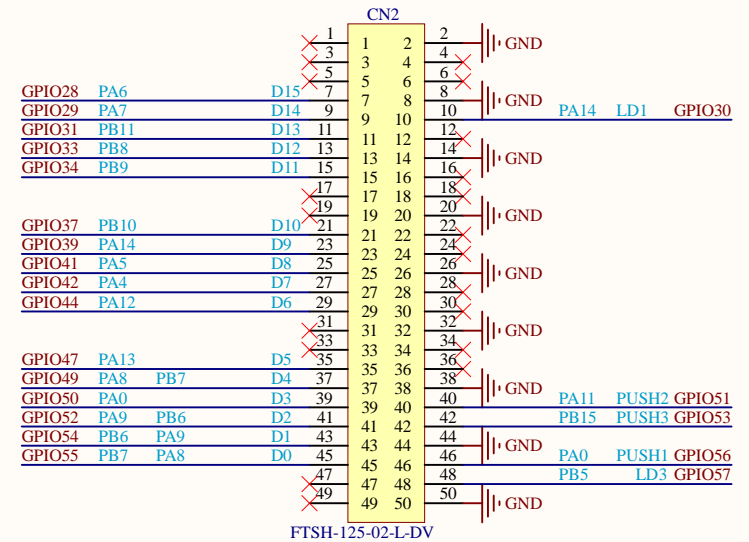
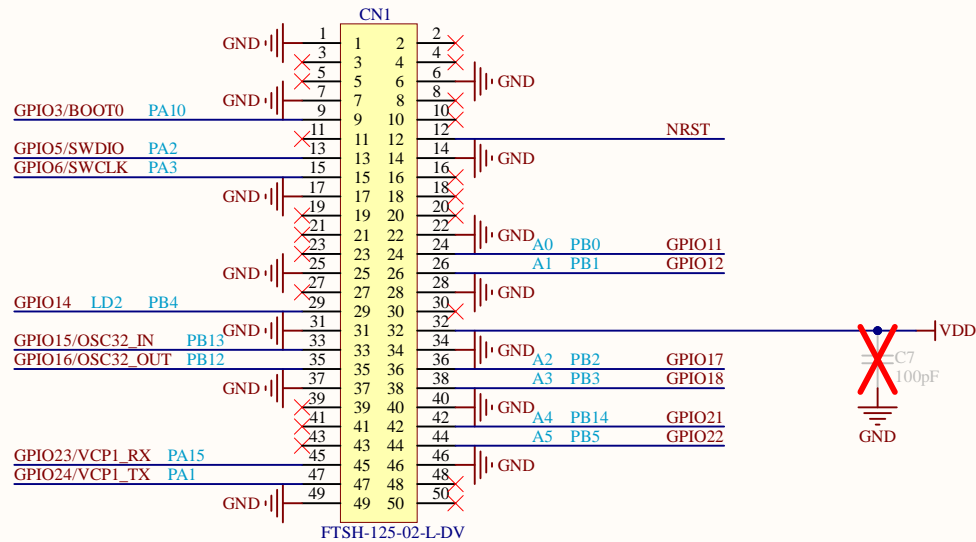
Designator
RF.SchDoc

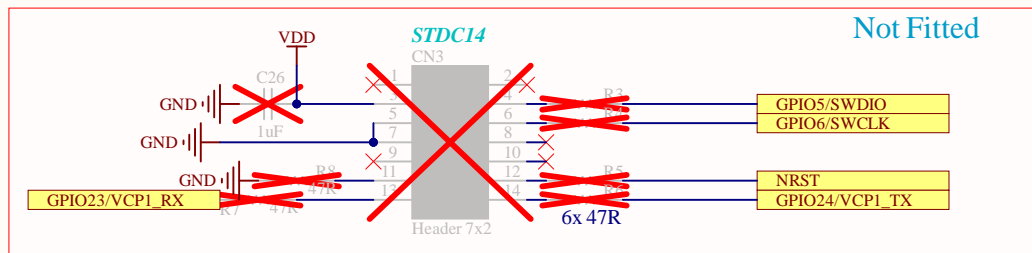
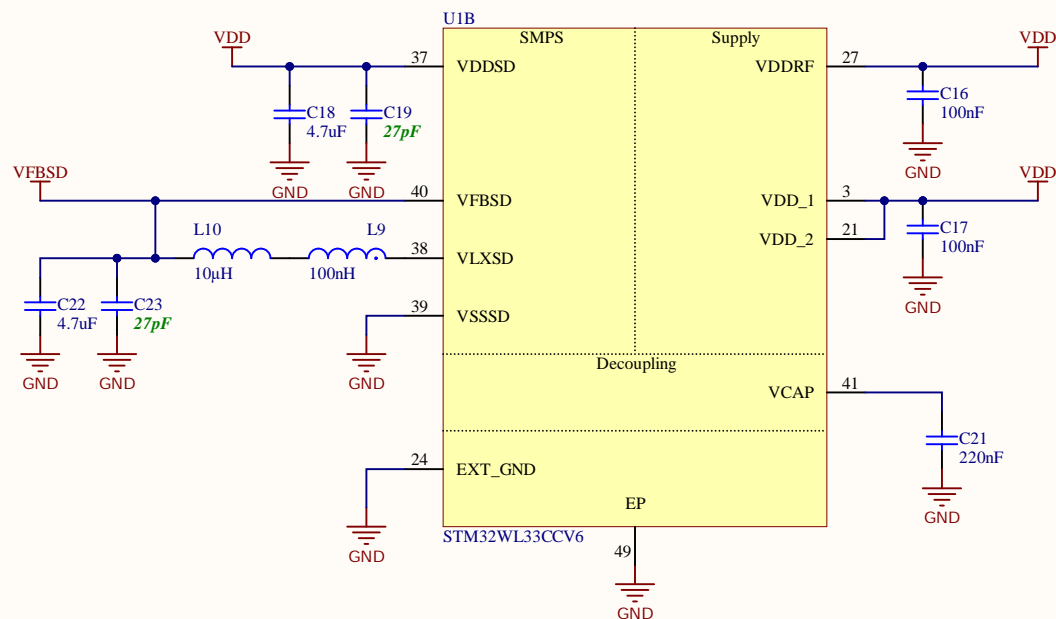


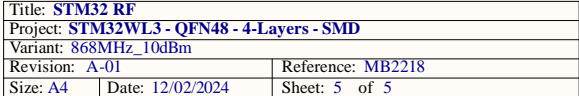
GPIO5/SWDIO
GPIO6/SWCLK
GPIO24/VCP1_TX
GPIO23/VCP1_RX
NRST

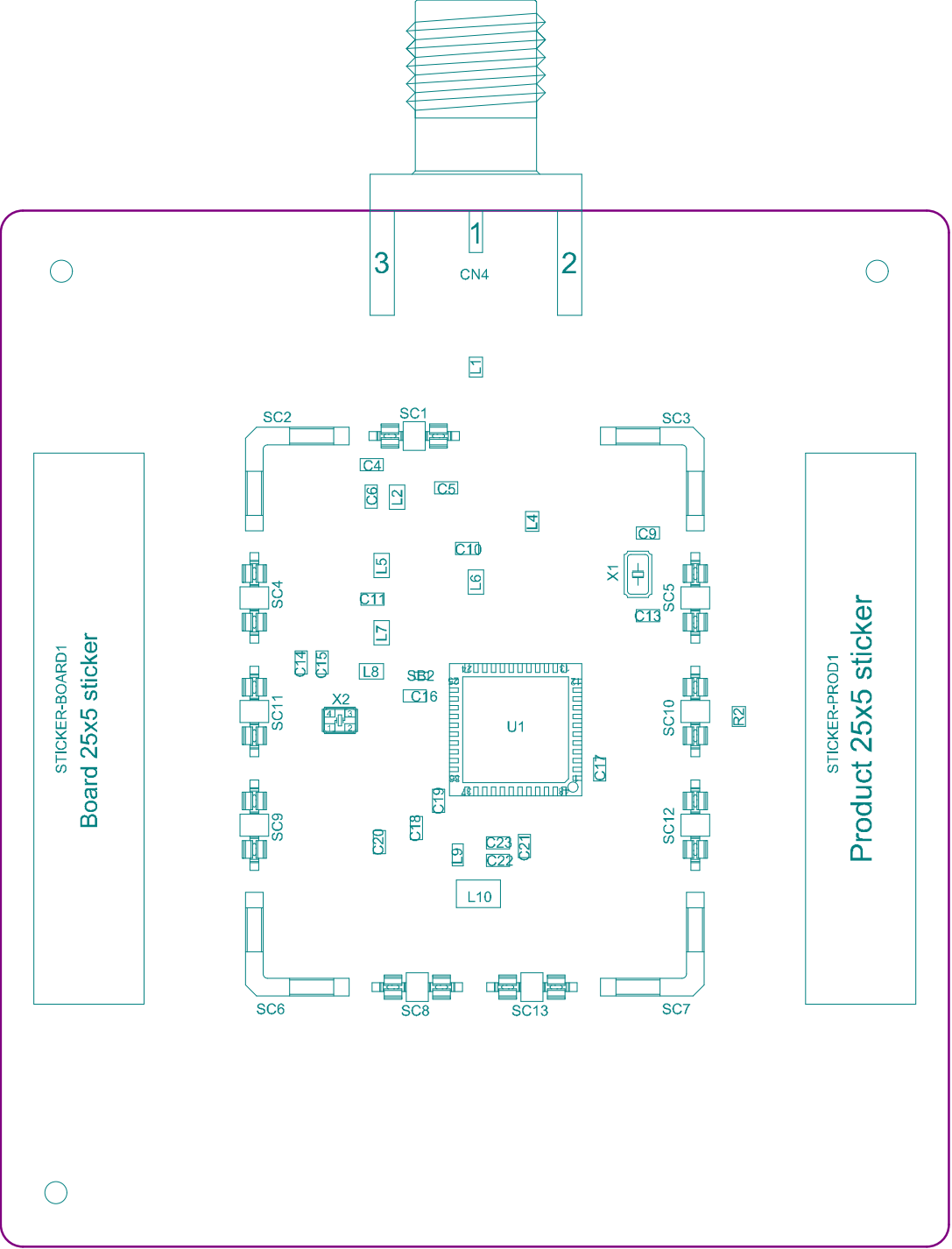
GPIO5/SWDIO
GPIO6/SWCLK
GPIO24/VCP1_TX
GPIO23/VCP1_RX
NRST











Project: STM32WL3 - QFN48 - 4-Layers - SMD

Layer: M14-Top Assembly

Variant: 868MHz_10dBm

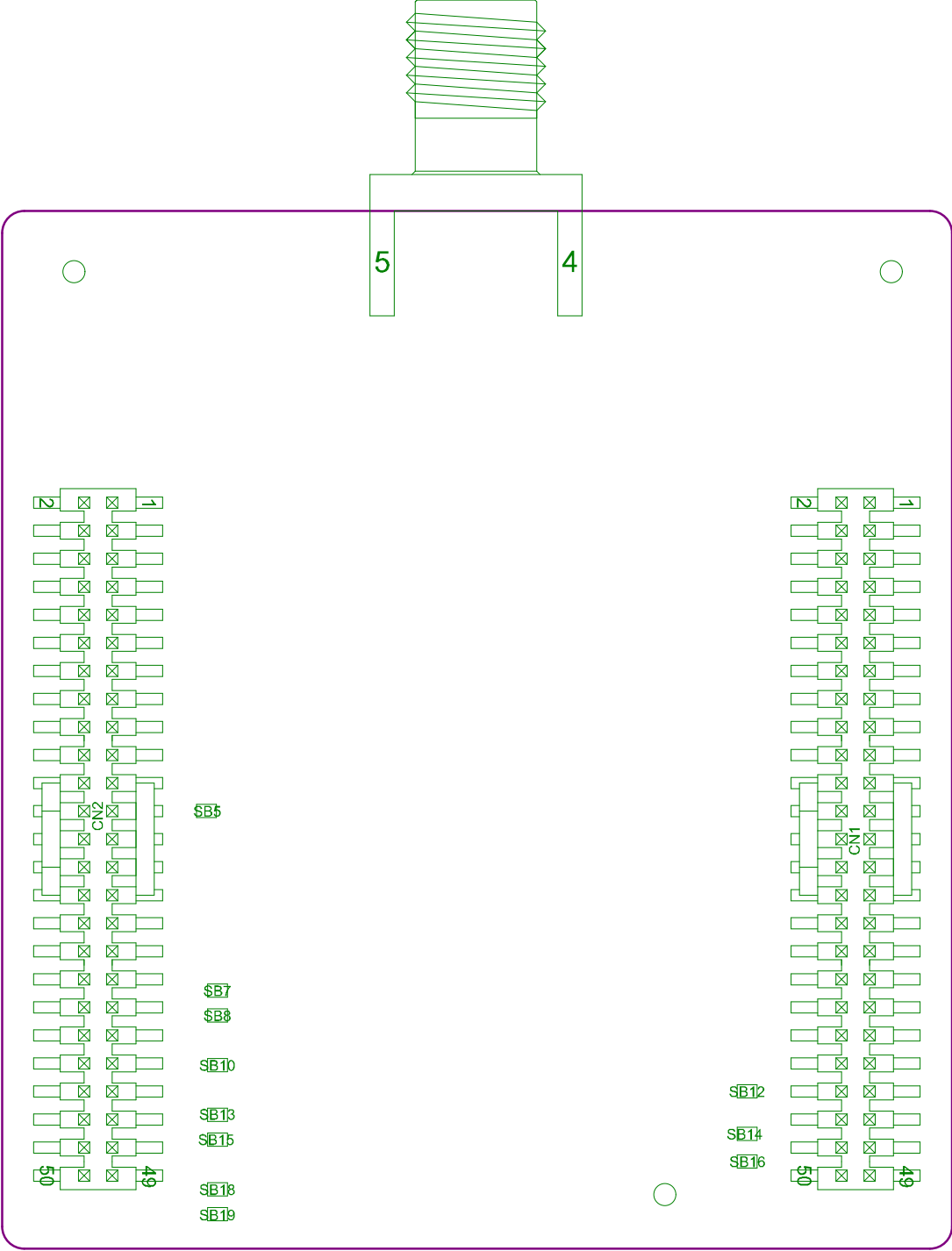
Date: 12/02/2024

Gerber: .GM14

Ref: MB2218

Rev: A





Project: STM32WL3 - QFN48 - 4-Layers - SMD

Layer: M15-Bottom Assembly

Variant: 868MHz_10dBm

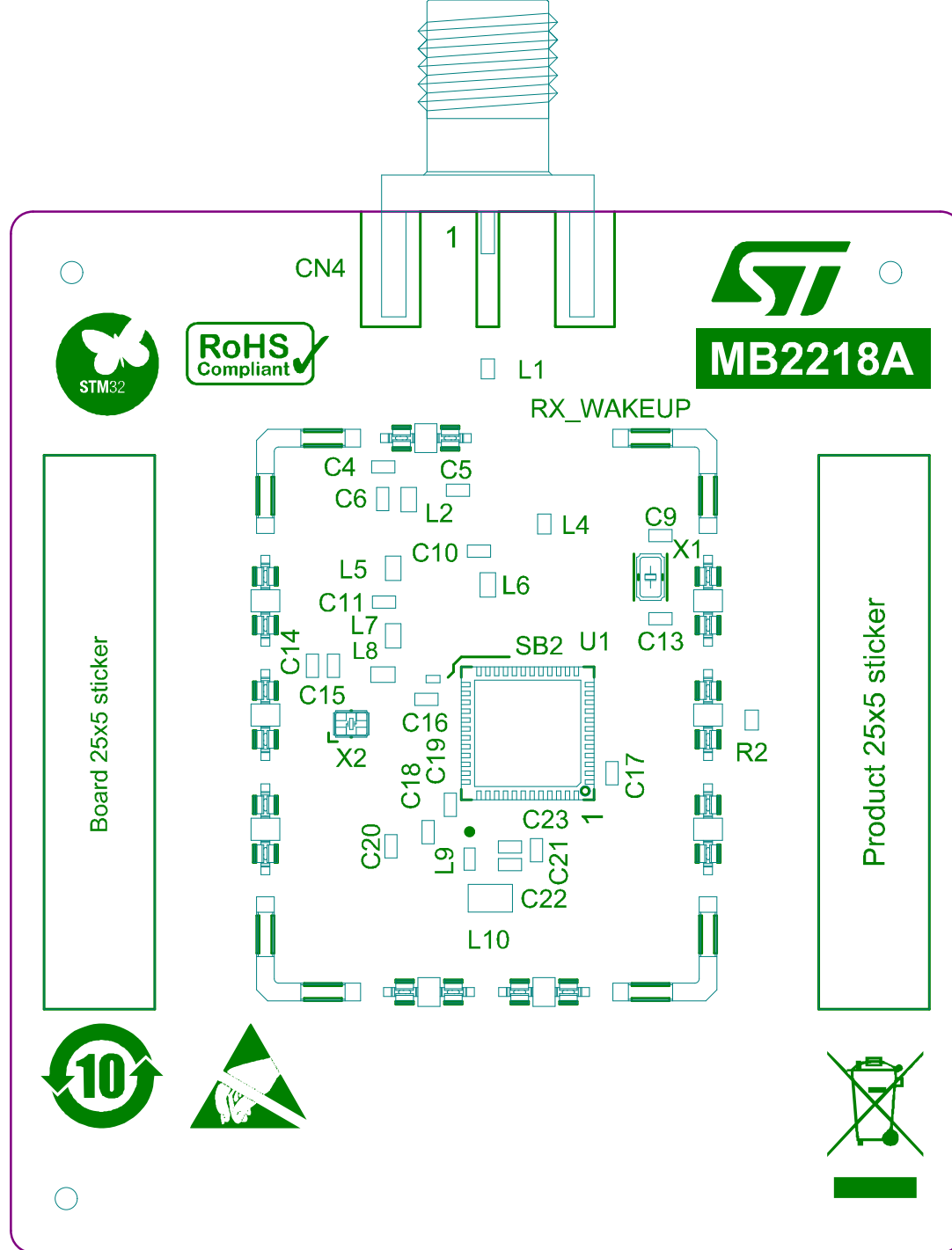
Date: 12/02/2024

Gerber:.GM15

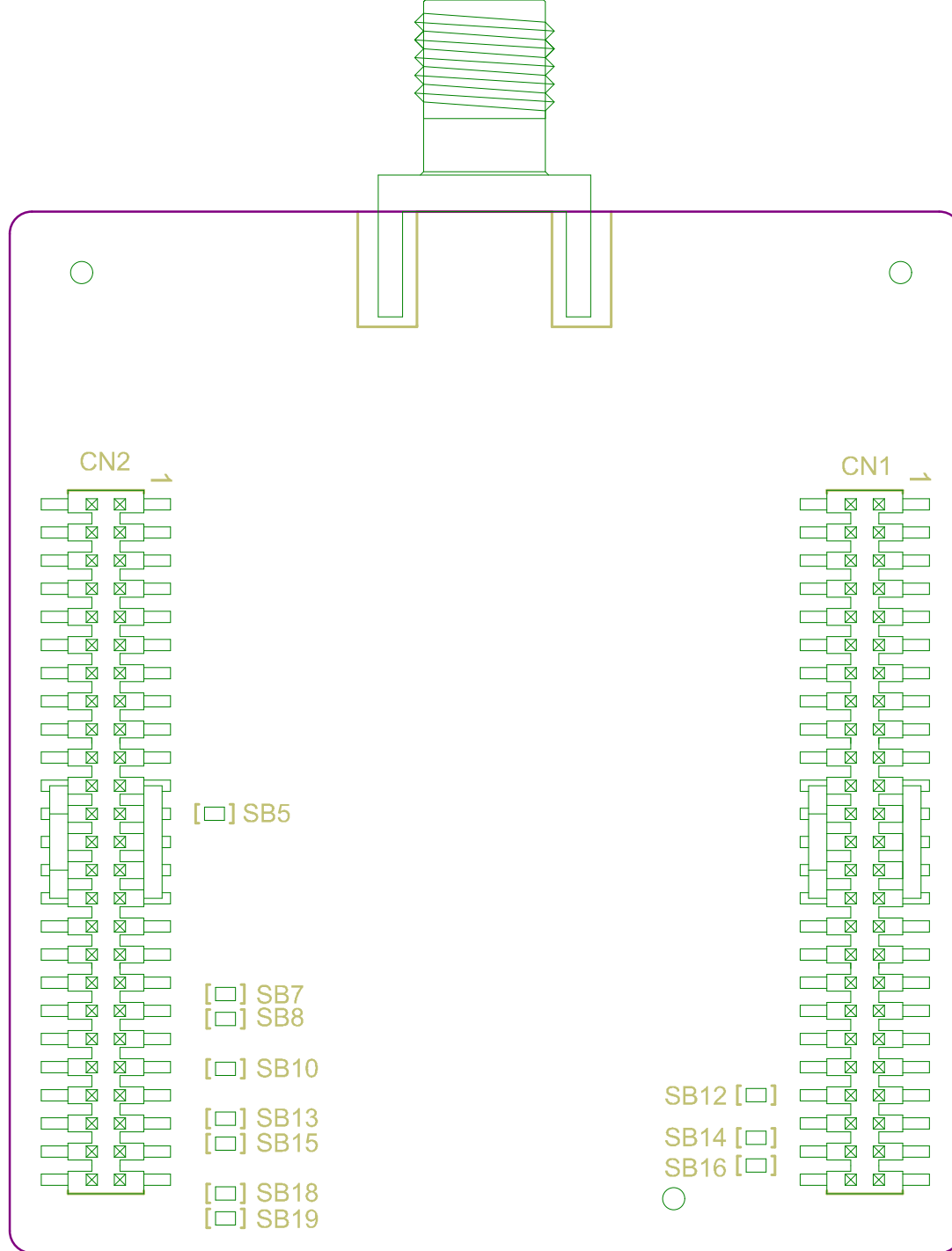
Ref: MB2218

Rev: A





.GTO



Bottom Overlay

.GBO