

STM32WL-QFN48-2Layers_Reference_Board

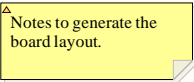
MB1791

Table of contents

- Sheet 1: Project overview (this page)
- Sheet 2: STM32WL_BGA73_Ref_Board_with_TCXO.SchDoc

Legend

- General comment such as function title, configuration, ...
- Text to be added to silkscreen.
- Warning text.



Open Platform License Agreement

The Open Platform License Agreement (“Agreement”) is a binding legal contract between you (“You”) and STMicroelectronics International N.V. (“ST”), a company incorporated under the laws of the Netherlands acting for the purpose of this Agreement through its Swiss branch 39, Chemin du Champ des Filles, 1228 Plan-les-Ouates, Geneva, Switzerland.

By using the enclosed reference designs, schematics, PC board layouts, and documentation, in hardcopy or CAD tool file format (collectively, the “Reference Material”), You are agreeing to be bound by the terms and conditions of this Agreement. Do not use the Reference Material until You have read and agreed to this Agreement terms and conditions. The use of the Reference Material automatically implies the acceptance of the Agreement terms and conditions.

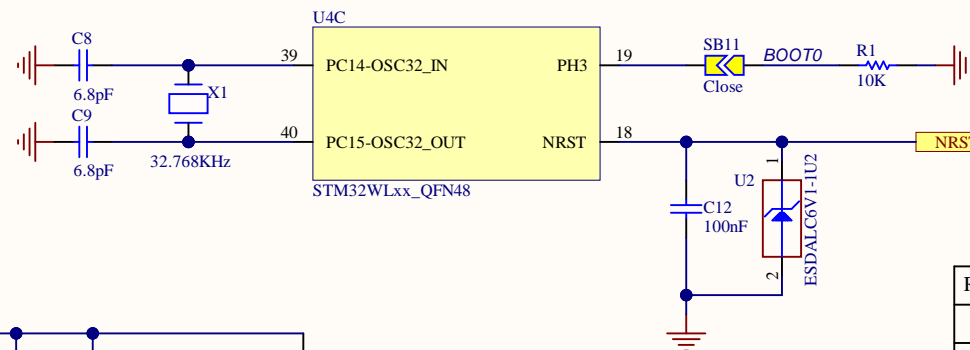
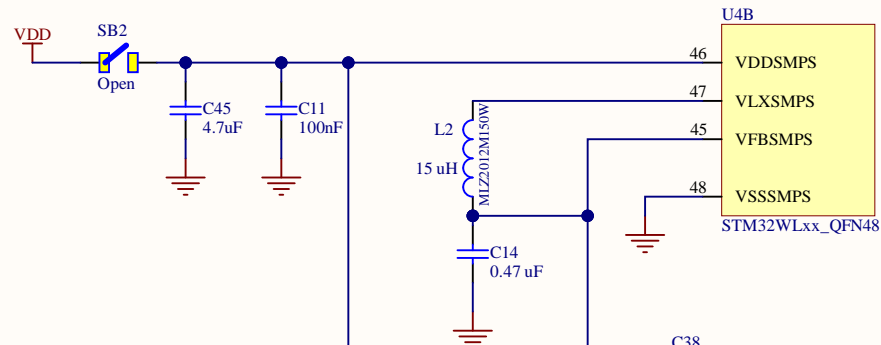
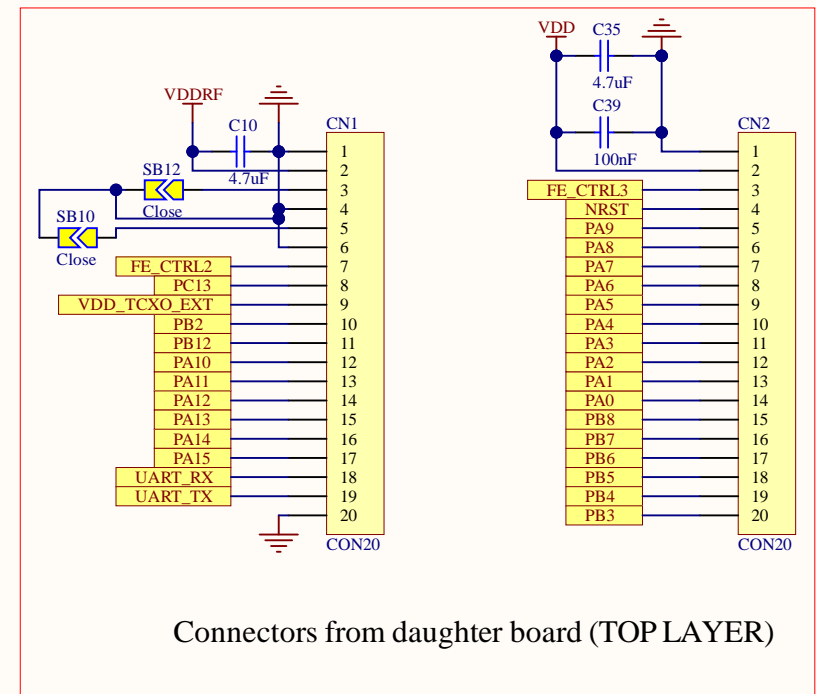
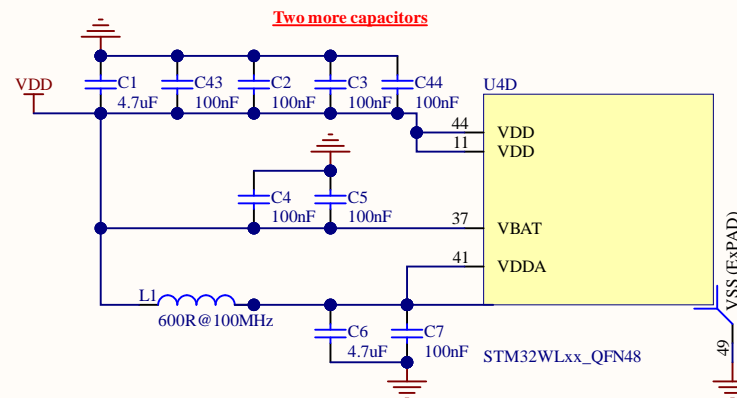
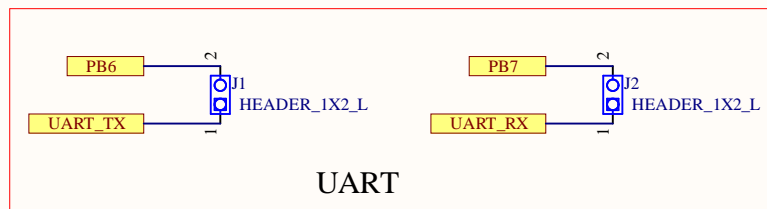
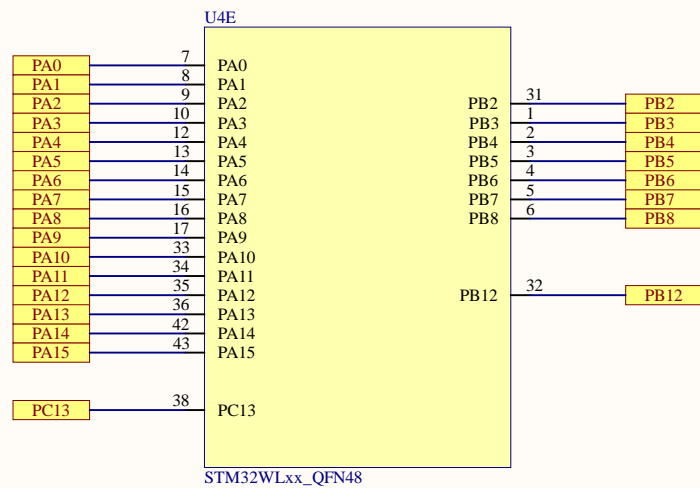
The complete Open Platform License Agreement can be found on www.st.com/opla.

U_Top
Reference_Design_STM32WL_2L_RF_SW.SchDoc

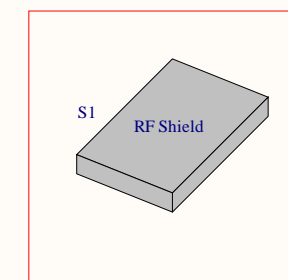
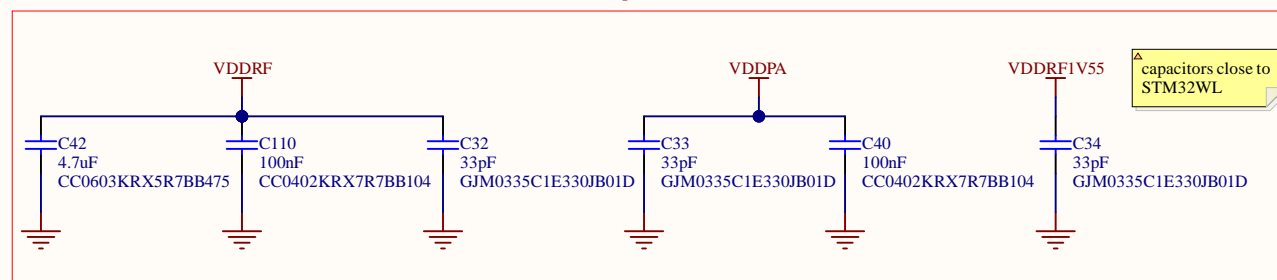
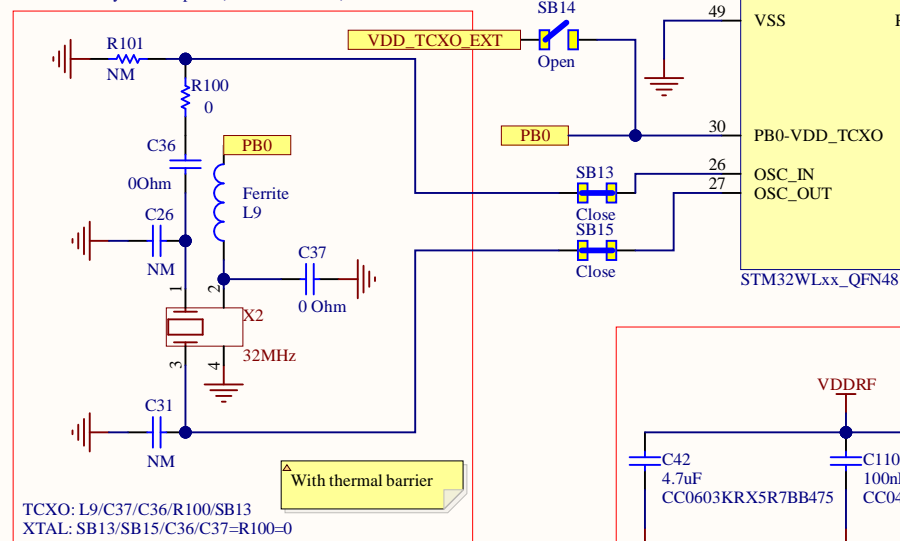


Title: Schematic sheet title to update		
Project: STM32WL-QFN48-2Layers_Reference_Board		
Variant: HighBand_LowPower		
Revision: A-01		Reference: MB1791
Size: A4	Date: 4-4-2022	Sheet: 1 of 2





HSE Clock: Hybrid footprint (XTAL or TCXO)



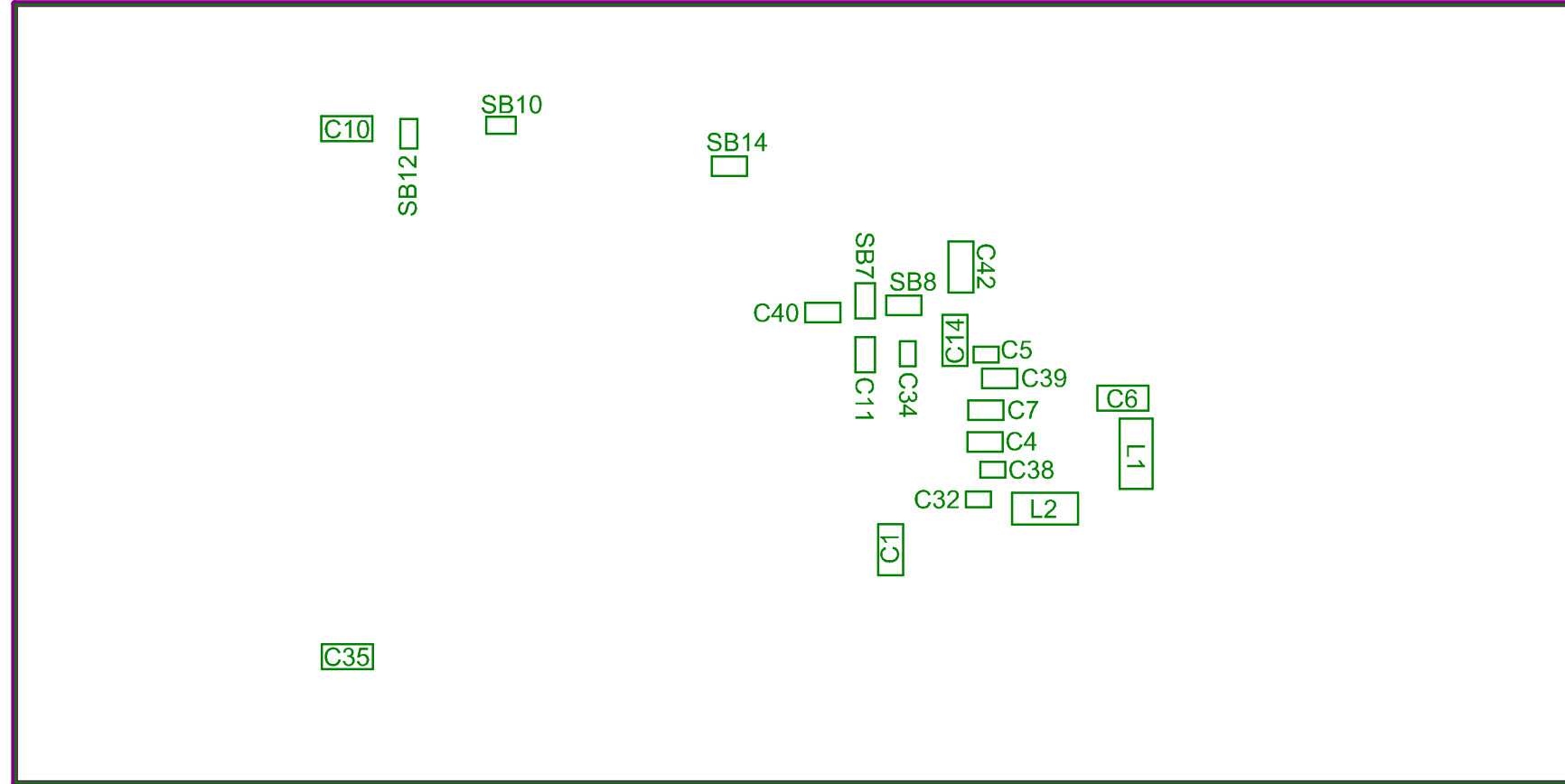
Notes:


RF BoMHighBand_LowPower

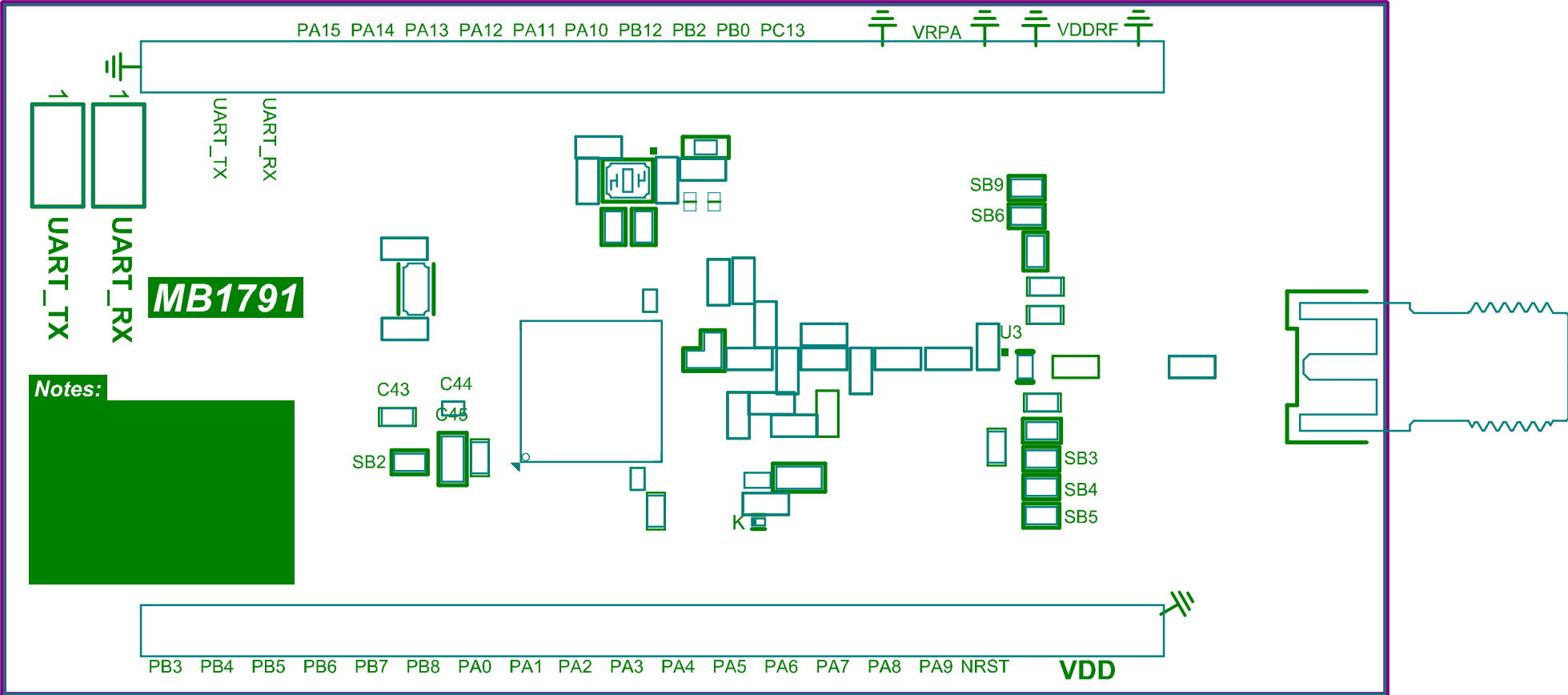
RF components:

- RF High-Q muRata GJM15 series for capacitors
- RF High-Q muRata LQW15AN series for inductors



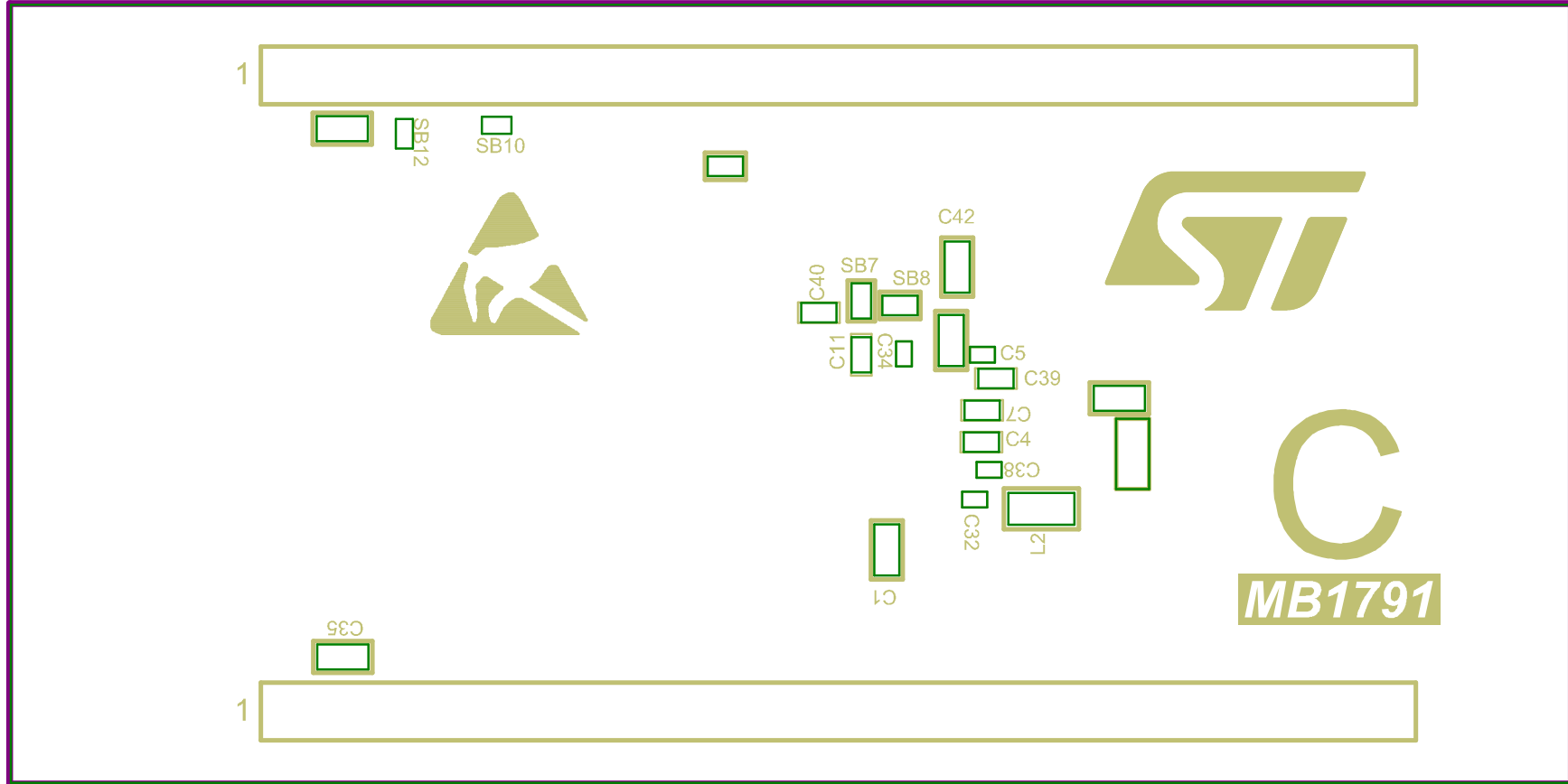


Project: STM32WL-QFN48-2Layers_Reference_Board		
Layer: Bottom Assembly	Gerber: .GM15	
Variant: HighBand_LowPower	Ref: MB1791	
Date: 4-4-2022	Rev: A	



Top Overlay

.GTO



Bottom Overlay

.GBO