

life.augmented

STM8 Nucleo open development platform



STM8 Nucleo key benefits



Flexible prototyping

Unlimited expansion capabilities

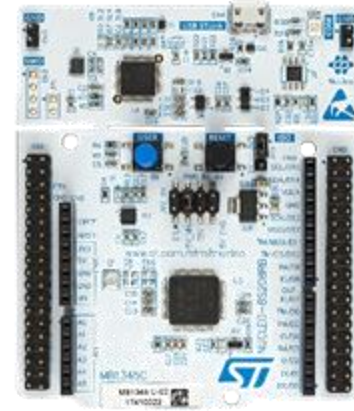
Simply showcase the STM8 portfolio to the communities

...Including two form factors



Nucleo-32
32 pins

STM8
Nucleo

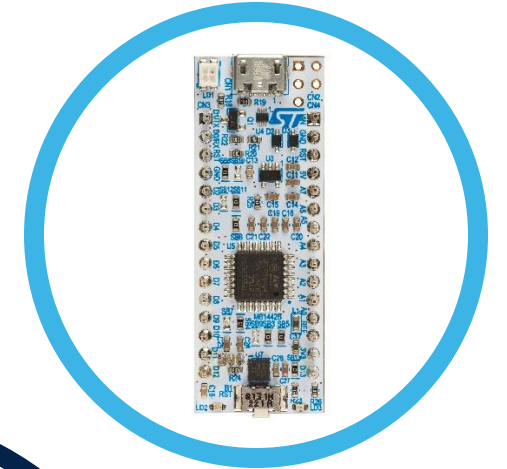


Nucleo-64
64 pins



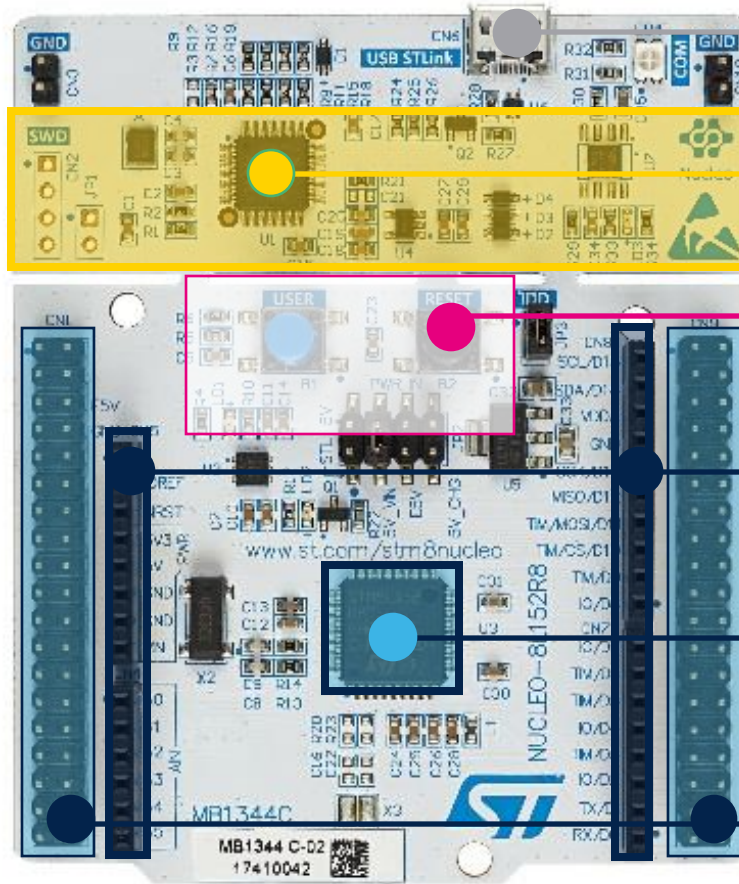
...Make creation more fluid

- Flexible prototyping
 - Affordable STM8 boards sharing the same association scheme (headers + connectors).
 - Reduction of financial risk through easy HW/SW tuning
- Unlimited extension capability.
 - Benefit from open hardware initiatives
 - Instant access to a large ecosystem of peripheral shields (Arduino)
- Simply showcase the STM8 portfolio to development communities
 - Extension shields are compatible with STM8 Nucleo boards
 - Free access to Arduino online IDE





STM8 Nucleo-64 features



Flexible board power supply:
through USB or external source

Integrated ST-Link
mass storage device flash programming,
virtual com port

2 push buttons, 2 color LEDs

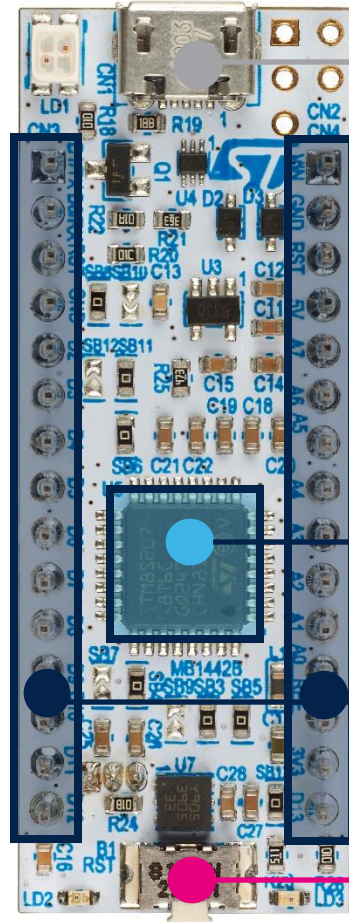
Arduino Uno extension connectors:
easy access to add-ons

One STM8 MCU flavor with 64 pins

ST morpho extension headers:
direct access to all MCU I/Os



STM8 Nucleo-32 features



Flexible board power supply:
through USB or external source

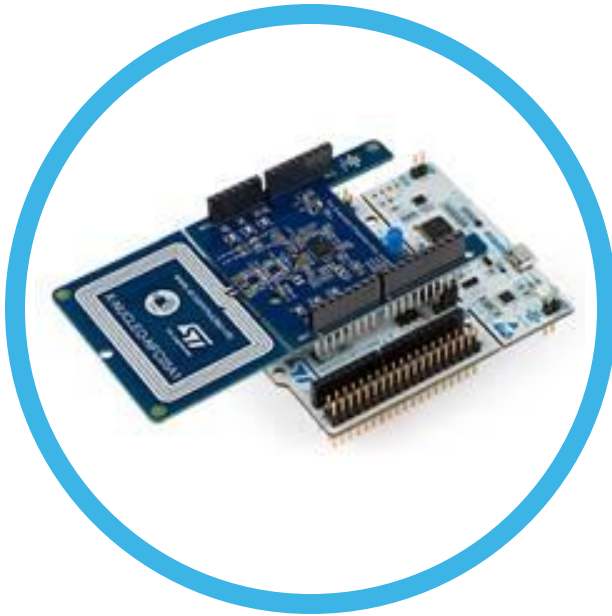
Integrated ST-LINK/V2-1:
drag & drop device flash programming

One STM8 MCU flavor with 32 pins

Arduino Nano extension connectors:
easy access to add-ons

Push button, 2 color LEDs

Association with expansion boards



Specialized functionality add-on

Smooth integration with STM8 Standard software library

Multiple IDE support



Sense



Connect



Move



Power



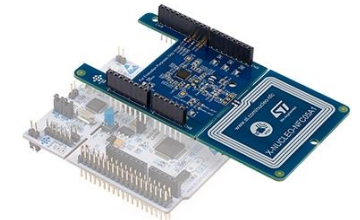
Interact

Simply scalable : No limit to possibilities



STM8 Nucleo SW & IDEs

- Software solutions for STM8 Nucleo boards include :
 - Comprehensive STM8 standard software library SPL
 - Pre-loaded « Blinky LED» demo with color LED
 - Various application notes / demo examples to be used with an expansion shield : NFC reader, image viewer...
- STM8 Nucleo boards work with several IDEs including :



IDEA



EWSTM8



STVD



IDE plug-ins

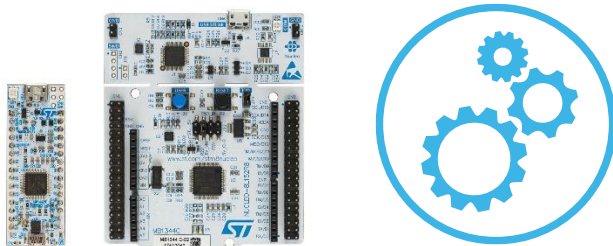


Free IDE



STM8 Nucleo open development platform

Hardware Tools



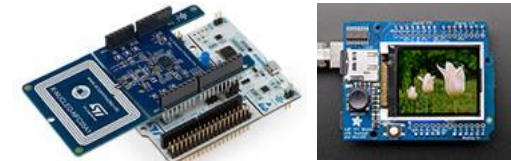
STM8 Nucleo
development boards

Software Tools



STM8 Standard
software library

Expansion Tools



STM8 Nucleo expansion
boards
(or Nucleo shields)

STM8 expansion SW

Multi-IDE support



Unified HW & SW abstraction across all STM8 series



Support for Arduino community

Arduino sketches (SW libraries)
ported on STM8 Standard Peripheral Libraries
with Cosmic compiler

visit GitHub page :
[Arduino Core STM8](#)

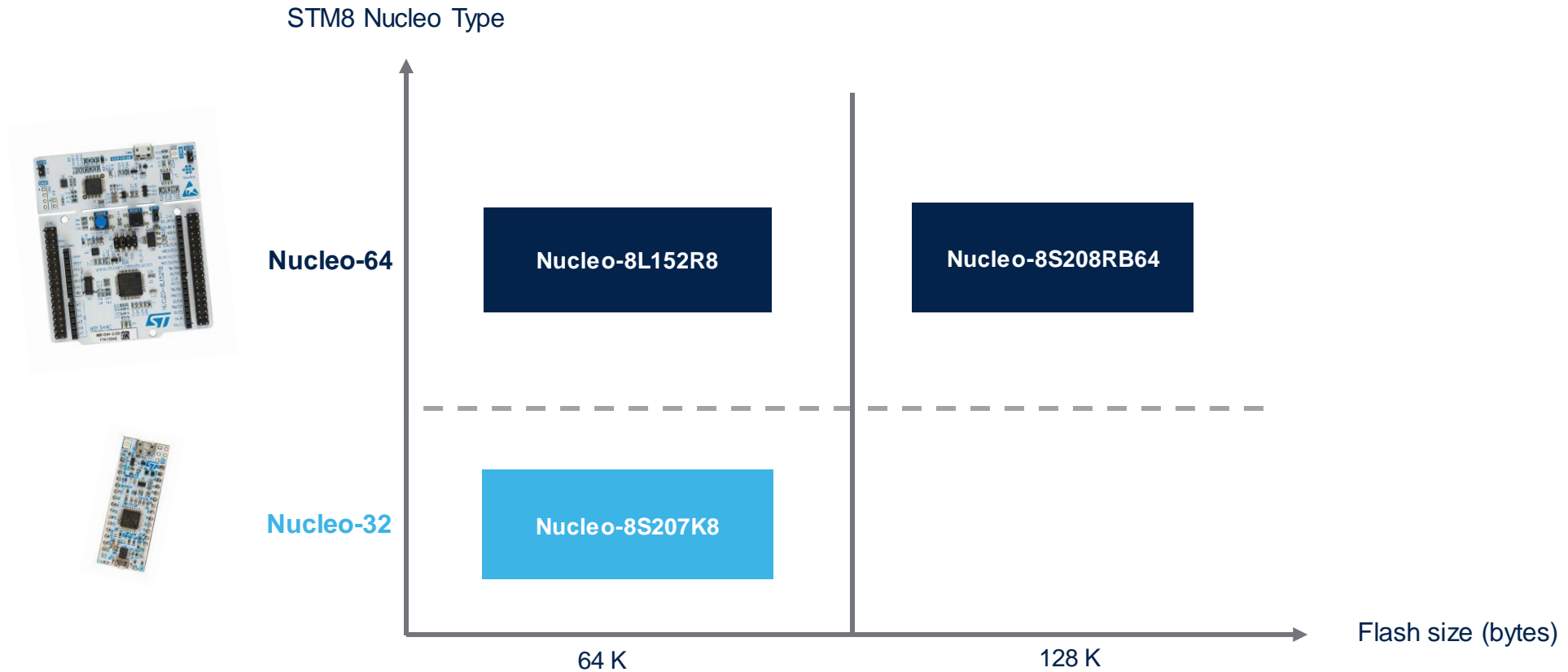


New plug-in for Arduino IDE
ready to support STM8 Nucleo boards

get plug-in :
[Arduino BoardManagerFile for STM8](#)



STM8 Nucleo portfolio



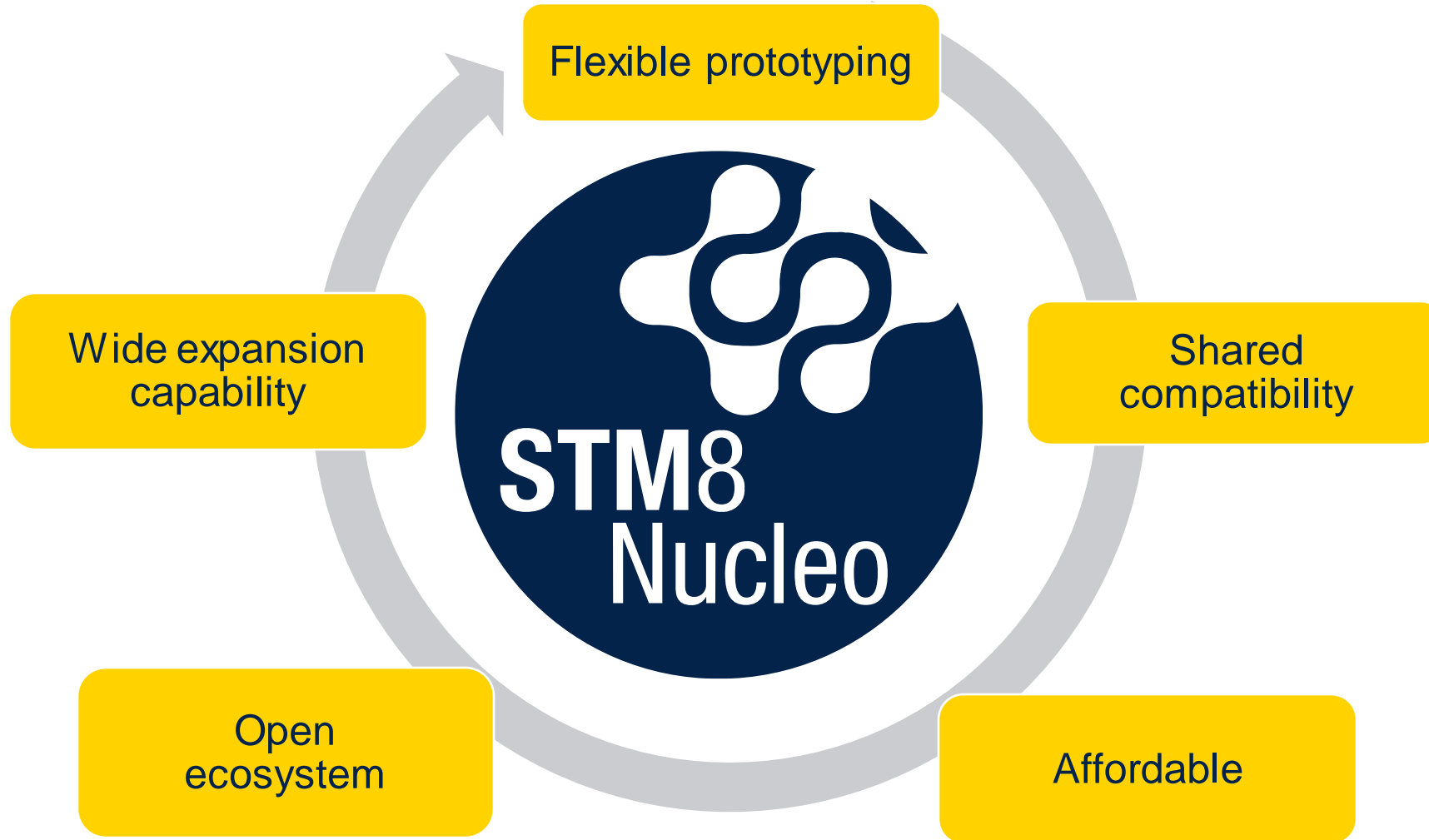
STM8 Nucleo showcases the whole family of STM8 microcontrollers



Board references

Part number	Nucleo Type	STM8 MCU reference	Price
Nucleo-8S207K8	32-pin	STM8S207K8T6	\$10.32 8.8€
Nucleo-8S208RB	64-pin	STM8S208RBT6	\$10.32 8.8€
Nucleo-8L152R8		STM8L152R8T6	\$10.32 8.8€

STM8 Nucleo value proposition



More information at www.st.com/STM8



<http://community.st.com>

Our technology starts with You



Find out more at www.st.com/STM8

© STMicroelectronics - All rights reserved.

ST logo is a trademark or a registered trademark of STMicroelectronics International NV or its affiliates in the EU and/or other countries.

For additional information about ST trademarks, please refer to www.st.com/trademarks.

All other product or service names are the property of their respective owners.



life.augmented