



50 kPa temperature compensated pressure sensors



MPX2053D
Case 344-15



MPXV2053DP
Case 1351-01



MPXM2053DT1
Case 1320-02



MPXM2053GS/GST1
Case 1320A-02

Features

- Ratiometric to Supply Voltage
- Differential and Gauge Options
- Temperature Compensated over 0 °C to 85 °C
- Easy-to-Use Chip Carrier Package Options

Applications

- Level Indicators
- Medical Diagnostics
- Robotics
- Pressure Switching
- Pump/Motor Controllers
- Non-Invasive Blood Pressure Measurement

Description

The MPX2053 series devices are silicon piezoresistive pressure sensors that provide a highly accurate and linear voltage output directly proportional to the applied pressure.

The sensor is a single monolithic silicon diaphragm with the strain gauge and a thin-film resistor network integrated on-chip. The chip is laser trimmed for precise span and offset calibration and temperature compensation.



1 Ordering information

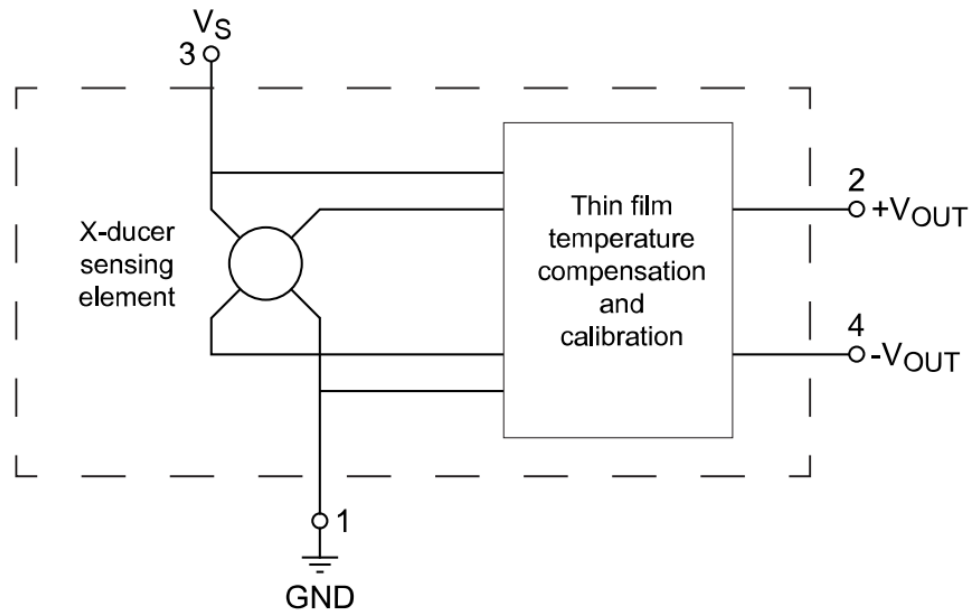
Table 1. Ordering information

Device Name	Package options	Case number	Gauge	Differential	Absolute	Device marking
MPXV2053DP	Tray	1351		•		MPXV2053DP
MPX2053D	Tray	344		•		MPX2053D
MPXM2053DT1	Tape & Reel	1320		•		MPXM2053D
MPXM2053GS	Tube	1320A		•		MPXM2053GS
MPXM2053GST1	Tape & Reel	1320A		•		MPXM2053GS

2 Block Diagram

Figure 1 shows a block diagram of the internal circuitry on the stand-alone pressure sensor chip.

Figure 1. Temperature compensated pressure sensor schematic

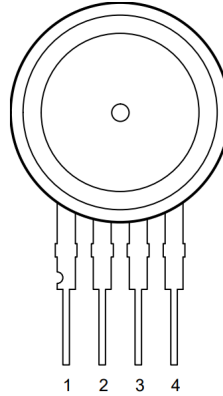


aaa-038712

3 Pin information

MPX2053D

Figure 2. Case 344-15



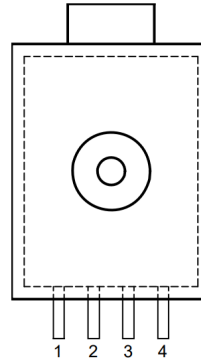
aaa-037831

Table 2. Pin definitions – MPX2053D

Symbol	Pin	Description
GND	1	Ground
+V _{OUT}	2	+ Voltage output
V _S	3	Power supply
-V _{OUT}	4	- Voltage output

MPXM2053GS/GST1

Figure 3. Case 1320A-02



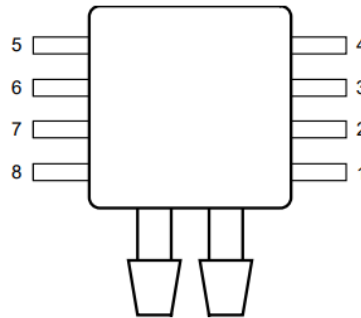
aaa-037854

Table 3. Pin definitions – MPXM2053GS/GST1

Symbol	Pin	Description
GND	1	Ground
+V _{OUT}	2	+ Voltage output
V _S	3	Power supply
-V _{OUT}	4	- Voltage output

MPXV2053DP

Figure 4. CASE 1351-01



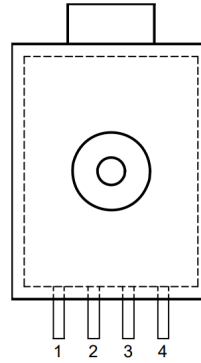
aaa-037858

Table 4. Pin definitions – MPXV2053DP

Symbol	Pin	Description
GND	1	Ground
+V _{OUT}	2	+ Voltage output
V _S	3	Power supply
-V _{OUT}	4	- Voltage output
n.a.	5	—
n.a.	6	—
n.a.	7	—
n.a.	8	—

MPXM2053DT1

Figure 5. Case 1320-02



aaa-037854

Table 5. Pin definitions - MPXM2053DT1

Symbol	Pin	Description
GND	1	Ground
+V _{OUT}	2	+ Voltage output
V _S	3	Power supply
-V _{OUT}	4	- Voltage output

4 Maximum ratings

Exposure beyond the specified limits may cause permanent damage or degradation to the device. In accordance with the Absolute Maximum Rating System (IEC 60134).

Table 6. Maximum ratings

Symbol	Parameter	Conditions	Min	Typ	Max
P _{max}	Overpressure	P1 > P2			200 kPa
T _{stg}	Storage Temperature		-40 °C		+125 °C
T _A	Operating Temperature		-40 °C		+125 °C

5 Operating Characteristics

Table 7. Operating Characteristics (VS = 10.0 Vdc, TA = 25 °C unless otherwise noted, P1 > P2)

Characteristic	Symbol	Min	Typ	Max
Operating Pressure Range ⁽¹⁾	P _{OP}	0	—	50 kPa
Supply Voltage ⁽²⁾	V _S	—	10	16 Vdc
Supply Current	I _o	—	6.0	— mAdc
Full Scale Span ⁽³⁾	V _{FSS}	38.5	40	41.5 mV
Offset ⁽⁴⁾	V _{off}	-1.0	—	1.0 mV
Sensitivity	ΔV/ΔP	—	0.8	— mV/kPa
Linearity ⁽⁵⁾	—	-0.6	—	0.4 %V _{FSS}
Pressure Hysteresis (0 kPa to 50 kPa) ⁽⁵⁾	—	—	±0.1	— %V _{FSS}
Temperature Hysteresis (-40 °C to 125 °C) ⁽⁵⁾	—	—	±0.5	— %V _{FSS}
Temperature Coefficient of Full Scale Span ⁽⁵⁾	TCV _{FSS}	-2.0	—	2.0 %V _{FSS}
Temperature Coefficient of Offset ⁽⁵⁾	TCV _{off}	-1.0	—	1.0 mV
Input Impedance	Z _{in}	1000	—	2500 Ω
Output Impedance	Z _{out}	1400	—	3000 Ω
Response Time (10% to 90%) ⁽⁶⁾	t _R	—	1.0	— ms
Warm-Up Time ⁽⁷⁾	—	—	20	— ms
Offset Stability ⁽⁸⁾	—	—	±0.5	— %V _{FSS}

- 1.0 kPa equals 0.145 PSI.
- Device is ratiometric within this specified excitation range. Operating the device above the specified excitation range may induce additional error due to device self-heating.
- Full Scale Span (VFSS) is defined as the algebraic difference between the output voltage at full rated pressure and the output voltage at the minimum rated pressure.
- Offset (Voff) is defined as the output voltage at the minimum rated pressure.
- Accuracy (error budget) consists of linearity, temperature hysteresis, pressure hysteresis, TcSpan, and TcOffset as described in the source datasheet.
- Response Time is defined as the time for the incremental change in the output to go from 10% to 90% of its final value when subjected to a specified step change in pressure.
- Warm-Up Time is defined as the time required for the product to meet the specified output voltage after the pressure has been stabilized.
- Offset Stability is the product's output deviation when subjected to 1000 hours of Pulsed Pressure Temperature Cycling with Bias test.

6 Characteristics

Voltage output versus applied differential pressure

The output voltage of the differential or gauge sensor increases with increasing pressure applied to the pressure side (P1) relative to the vacuum side (P2). Similarly, output voltage increases as increasing vacuum is applied to the vacuum side (P2) relative to the pressure side (P1).

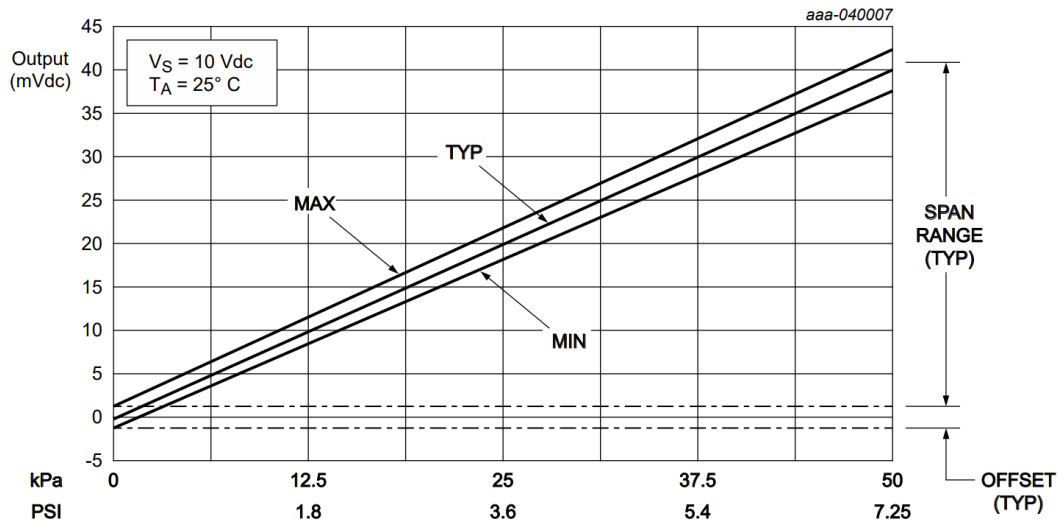
On-chip temperature compensation and calibration

Figure 6 shows the typical output characteristics of the MPX2053 series at 25 °C.

The effects of temperature on full scale span and offset are very small and are shown under Operating Characteristics.

This performance over temperature is achieved by having both the shear stress strain gauge and the thin-film resistor circuitry on the same silicon diaphragm. Each chip is dynamically laser trimmed for precise span and offset calibration and temperature compensation.

Figure 6. Output vs. pressure differential



Linearity

Linearity refers to how well a transducer's output follows the equation $V_{out} = V_{off} + \text{Sensitivity} \times P$ over the operating pressure range Figure 7.

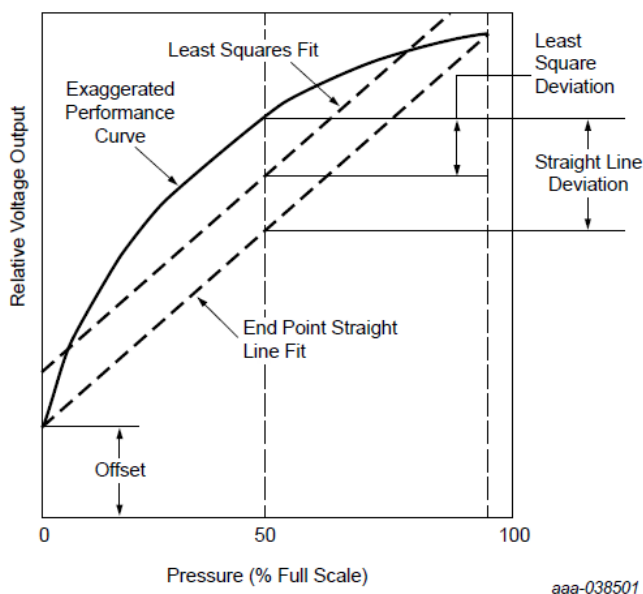
There are two basic methods for calculating nonlinearity:

- End point straight line fit
- Least squares best line fit

While a least squares fit gives the best case linearity error, the calculations required are burdensome.

Conversely, an end point fit gives the worst case error and the calculations are more straightforward for the user.

ST's specified pressure sensor linearities are based on the end point straight line method measured at the midrange pressure.

Figure 7. Linearity specification comparison

Pressure (P1) / Vacuum (P2) side identification

ST designates the two sides of the pressure sensor as the Pressure (P1) side and the Vacuum (P2) side. The Pressure (P1) side is the side containing silicone gel that isolates the die from the environment. The ST MPX pressure sensor is designed to operate with positive differential pressure applied, $P1 > P2$.

The Pressure (P1) side may be identified by using the following table.

Table 8. Pressure (P1) side delineation table

Part Number	Case Type	Pressure (P1) Side Identifier
MPX2053D	344	Stainless Steel Cap
MPXV2053DP	1351	Side with Part Marking
MPXM2053DT1	1320	Side with Part Marking
MPXM2053GS/GST1	1320A	Side with Port Attached

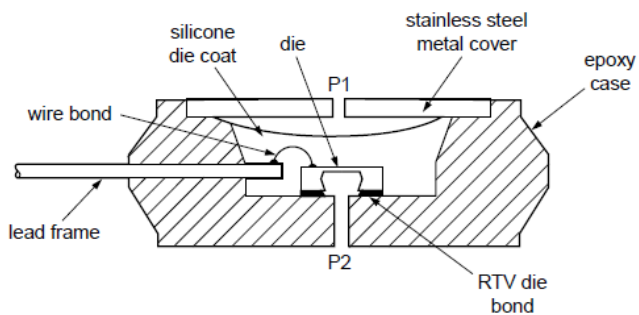
Media compatibility

Figure 8 illustrates the differential or gauge configuration in a typical chip carrier. A silicone gel isolates the die surface and wire bonds from the environment while allowing the pressure signal to be transmitted to the silicon diaphragm.

The MPX2053 series pressure sensor operating characteristics, internal reliability and qualification tests are based on the use of dry clean air as the pressure medium. Media other than dry clean air may have adverse effects on sensor performance and long term reliability. Contact the factory for information regarding media compatibility in your application.

For more information, refer to application note AN3728.

Figure 8. Unibody package — cross-sectional diagram (not to scale)

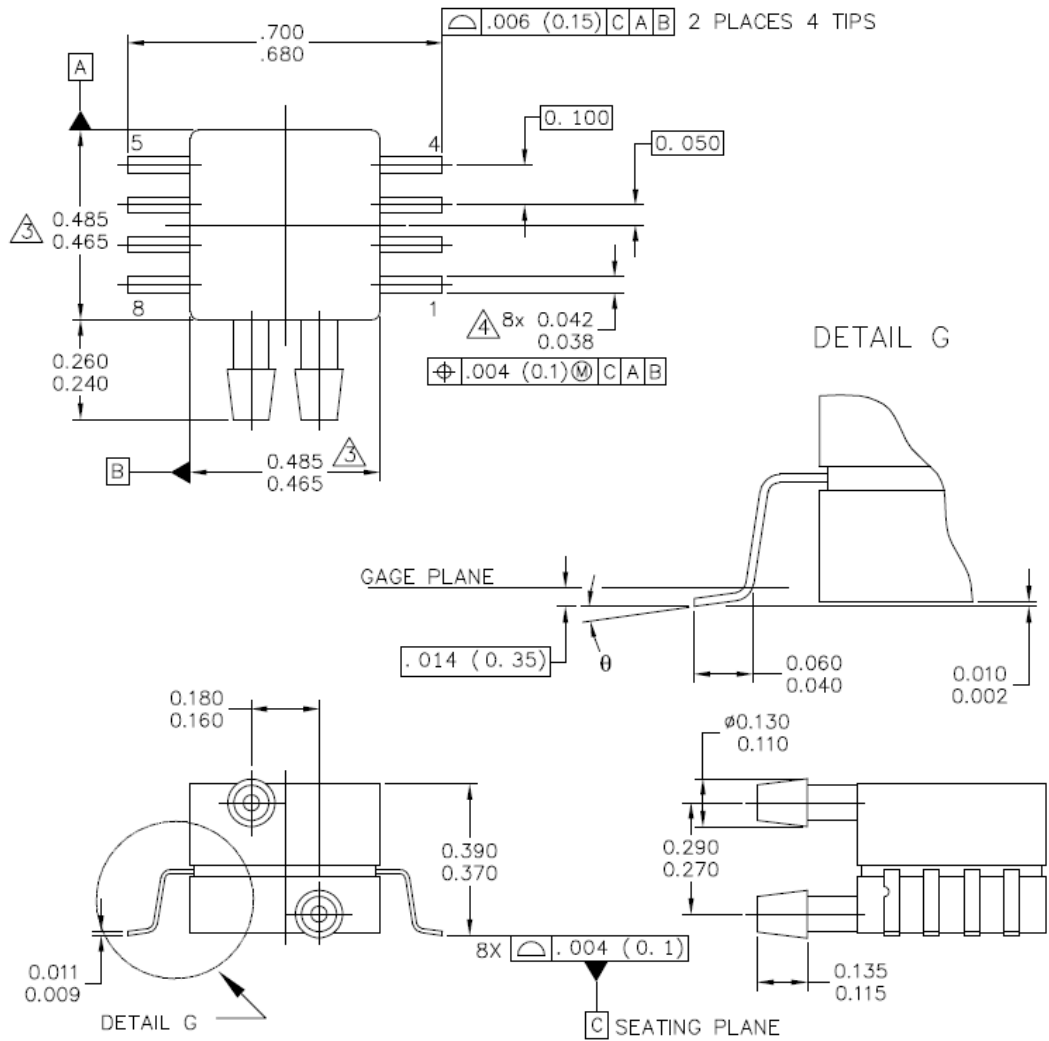


aaa-037713

7 Package Outlines

Small outline packages

Figure 9. SOT1693-1 (Case 1351) – Page 1



© NXP SEMICONDUCTORS N. V. ALL RIGHTS RESERVED	MECHANICAL OUTLINE	PRINT VERSION NOT TO SCALE
TITLE: 8 LD SNSR, DUAL PORT	DOCUMENT NO: 98ASA99255D	REV: B
	STANDARD: NON-JEDEC	
	SOT1693-1	14 MAR 2016

Figure 10. SOT1693-1 (Case 1351) – Page 2

NOTES:

1. CONTROLLING DIMENSION: INCH
2. INTERPRET DIMENSIONS AND TOLERANCES PER ASME Y14.5M–1994.
3. DIMENSIONS DO NOT INCLUDE MOLD FLASH OR PROTRUSIONS. MOLD FLASH AND PROTRUSIONS SHALL NOT EXCEED .006 PER SIDE.
4. DIMENSION DOES NOT INCLUDE DAMBAR PROTRUSION. ALLOWABLE DAMBAR PROTRUSION SHALL BE .008 MAXIMUM.

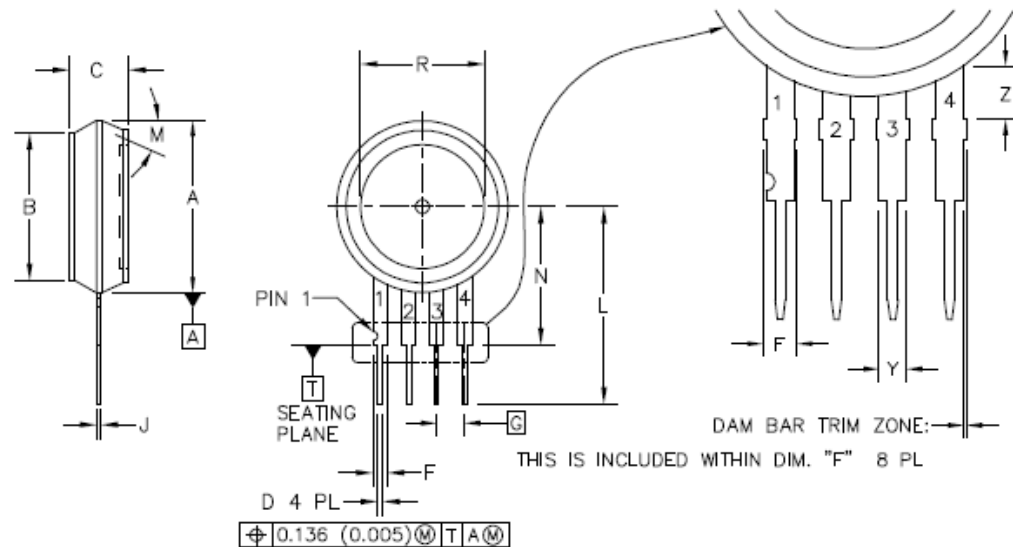
STYLE 1:

PIN 1: GND
 PIN 2: +Vout
 PIN 3: Vs
 PIN 4: -Vout
 PIN 5: N/C
 PIN 6: N/C
 PIN 7: N/C
 PIN 8: N/C

STYLE 2:

PIN 1: N/C
 PIN 2: Vs
 PIN 3: GND
 PIN 4: Vout
 PIN 5: N/C
 PIN 6: N/C
 PIN 7: N/C
 PIN 8: N/C

© NXP SEMICONDUCTORS N. V. ALL RIGHTS RESERVED	MECHANICAL OUTLINE	PRINT VERSION NOT TO SCALE	
TITLE: 8 LD SNSR, DUAL PORT		DOCUMENT NO: 98ASA99255D	REV: B
		STANDARD: NON-JEDEC	
		SOT1693-1	14 MAR 2016

Unibody packages
Figure 11. SOT1772-1 (Case 344-15)


DIM	MILLIMETERS		INCHES	
	MIN	MAX	MIN	MAX
A	15.11	16.00	0.595	0.630
B	13.06	13.56	0.514	0.534
C	5.08	5.59	0.200	0.220
D	0.41	0.51	0.016	0.020
F	1.22	1.63	0.048	0.064
G	2.54 BSC		0.100 BSC	
J	0.36	0.40	0.014	0.016
L	17.65	18.42	0.695	0.725
M	30° NOM		30° NOM	
N	12.07	12.57	0.475	0.495
R	10.92	11.43	0.430	0.450
Y	1.22	1.32	0.048	0.052
Z	2.68	3.00	0.106	0.118

NOTES:

1. DIMENSIONING AND TOLERANCING PER ASME Y14.5M, 1994
2. CONTROLLING DIMENSION: INCH.
3. DIMENSION A IS INCLUSIVE OF THE MOLD STOP RING NOT TO EXCEED 16.00 (0.630)
4. 344-01 THRU -4 OBSOLETE.
5. 344-05 THRU -11 OBSOLETE, NEW STANDARD 344-15.

STYLE 1:

PIN 1. GROUND
 2. + OUTPUT
 3. + SUPPLY
 4. - OUTPUT

STYLE 2:

PIN 1. VCC
 2. - SUPPLY
 3. + SUPPLY
 4. GROUND

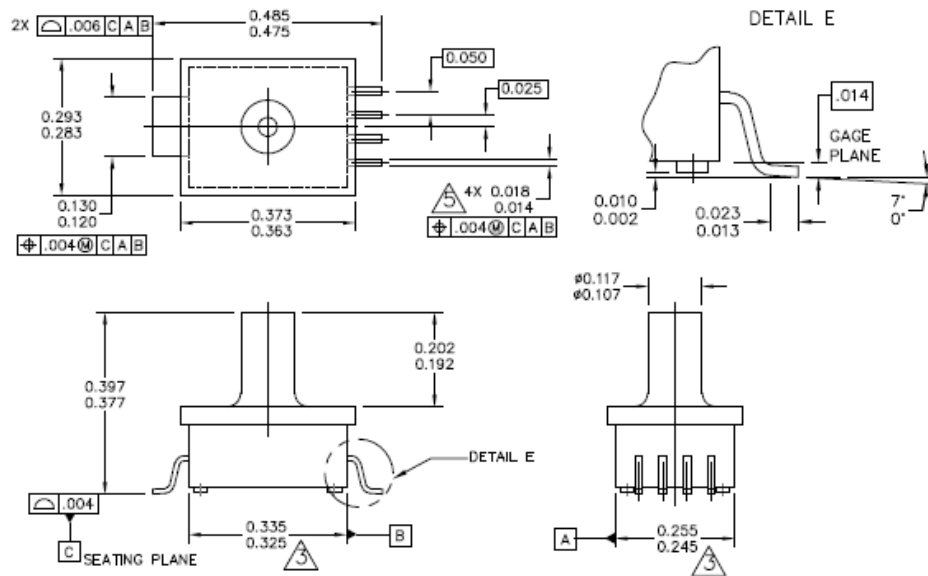
STYLE 3:

PIN 1. GROUND
 2. - VOUT
 3. VS
 4. + VOUT

© NXP SEMICONDUCTORS N.V. ALL RIGHTS RESERVED	MECHANICAL OUTLINE	PRINT VERSION NOT TO SCALE
TITLE: UNIBODY A & D	DOCUMENT NO: 98ASB42280B REV: AD	
	STANDARD: NON-JEDEC	
	SOT1772-1	02 FEB 2016

MPAK packages

Figure 12. SOT1673-1 (1320A-02) – Page 1



© NXP SEMICONDUCTORS N. V. ALL RIGHTS RESERVED	MECHANICAL OUTLINE	PRINT VERSION NOT TO SCALE
TITLE: 5 LD M-PAC, PORTED	DOCUMENT NO: 98ARH99087A	REV: B
	STANDARD: NON-JEDEC	
	SOT1673-1	29 FEB 2016

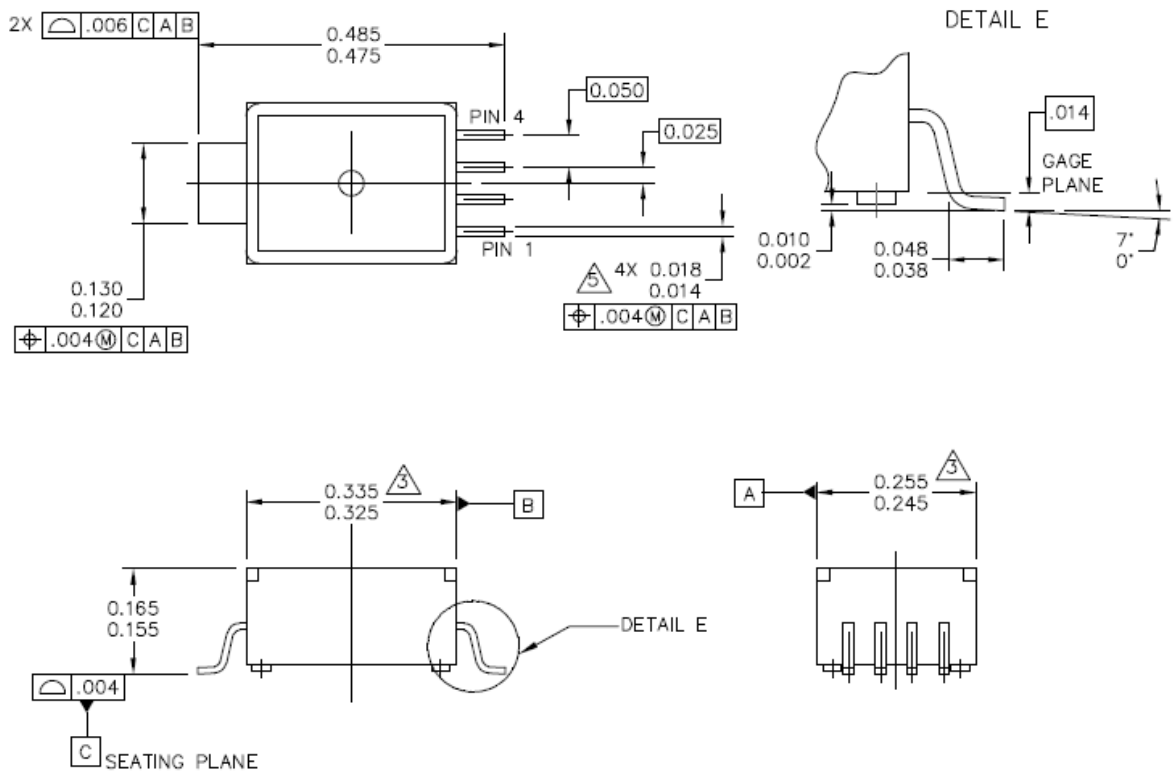
Figure 13. SOT1673-1 (1320A-02) – Page 2

NOTES:

1. DIMENSIONS ARE IN INCHES.
2. INTERPRET DIMENSIONS AND TOLERANCES PER ASME Y14.5M-1994.
3. DIMENSIONS DOES NOT INCLUDE MOLD FLASH OR PROTRUSION. MOLD FLASH OR PROTRUSION SHALL NOT EXCEED .006" PER SIDE.
4. ALL VERTICAL SURFACES TO BE 5" MAXIMUM.
5. DIMENSION DOES NOT INCLUDE DAMBAR PROTRUSION. ALLOWABLE DAMBAR PROTRUSION SHALL BE .008 MAXIMUM.

© NXP SEMICONDUCTORS N. V. ALL RIGHTS RESERVED	MECHANICAL OUTLINE	PRINT VERSION NOT TO SCALE	
TITLE:		DOCUMENT NO: 98ARH99087A	REV: B
5 LD M-PAC, PORTED		STANDARD: NON-JEDEC	
		SOT1673-1	29 FEB 2016

Figure 14. SOT1674-1 (Case 1320-02) – Page 1



© NXP SEMICONDUCTORS N.V. ALL RIGHTS RESERVED	MECHANICAL OUTLINE	PRINT VERSION NOT TO SCALE
TITLE: 5 LD M-PAC	DOCUMENT NO: 98ARH99088A	REV: D
	STANDARD: NON-JEDEC	
	SOT1674-1	29 FEB 2016

Figure 15. SOT1674-1 (Case 1320-02) – page 2

NOTES:

1. DIMENSIONS ARE IN INCHES.
2. INTERPRET DIMENSIONS AND TOLERANCES PER ASME Y14.5M-1994.
3. DIMENSION DOES NOT INCLUDE MOLD FLASH OR PROTRUSION. MOLD FLASH OR PROTRUSION SHALL NOT EXCEED .006" PER SIDE.
4. ALL VERTICAL SURFACES TO BE 5° MAXIMUM.
5. DIMENSION DOES NOT INCLUDE DAMBAR PROTRUSION. ALLOWABLE DAMBAR PROTRUSION SHALL BE .008 MAXIMUM.

PIN 1: GND
 PIN 2: +Vout
 PIN 3: Vs
 PIN 4: -Vout

© NXP SEMICONDUCTORS N. V. ALL RIGHTS RESERVED	MECHANICAL OUTLINE	PRINT VERSION NOT TO SCALE	
TITLE: 5 LD M-PAC		DOCUMENT NO: 98ARH99088A	REV: D
		STANDARD: NON-JEDEC	
		SOT1674-1	29 FEB 2016



Revision history

Table 9. Document revision history

Date	Version	Changes
07-Jul-2026	1	Initial release from ST, rebranded NXP document



IMPORTANT NOTICE – READ CAREFULLY

STMicroelectronics NV and its subsidiaries (“ST”) reserve the right to make changes, corrections, enhancements, modifications, and improvements to ST products and/or to this document at any time without notice.

In the event of any conflict between the provisions of this document and the provisions of any contractual arrangement in force between the purchasers and ST, the provisions of such contractual arrangement shall prevail.

The purchasers should obtain the latest relevant information on ST products before placing orders. ST products are sold pursuant to ST’s terms and conditions of sale in place at the time of order acknowledgment.

The purchasers are solely responsible for the choice, selection, and use of ST products and ST assumes no liability for application assistance or the design of the purchasers’ products.

No license, express or implied, to any intellectual property right is granted by ST herein.

Resale of ST products with provisions different from the information set forth herein shall void any warranty granted by ST for such product.

If the purchasers identify an ST product that meets their functional and performance requirements but that is not designated for the purchasers’ market segment, the purchasers shall contact ST for more information.

ST and the ST logo are trademarks of ST. For additional information about ST trademarks, refer to www.st.com/trademarks. All other product or service names are the property of their respective owners.

Information in this document supersedes and replaces information previously supplied in any prior versions of this document.

© 2026 STMicroelectronics – All rights reserved