



Integrated silicon pressure sensor, on-chip signal conditioned, temperature compensated and calibrated

Features

- 2.5 % Maximum Error over 0 ° to 85 °C
- Ideally suited for Microprocessor or Microcontroller-based systems
- Temperature compensated over –40 ° to +125 °C
- Patented silicon shear stress strain gauge
- Durable epoxy unibody element
- Easy-to-use chip carrier option

Description

The MPXx5050 series piezoresistive transducer is a state-of-the-art monolithic silicon pressure sensor designed for a wide range of applications, but particularly those employing a microcontroller or microprocessor with A/D inputs. This patented, single element transducer combines advanced micromachining techniques, thin-film metallization, and bipolar processing to provide an accurate, high level analog output signal that is proportional to the applied pressure.

1 Ordering information

Table 1. Ordering information

Type number	Package		
	Name	Description	Version
MPX5050DP	SENSOR4F	Pressure sensor, 5 V, 0/50 kPa, Port; Unibody package, 4 terminals; 2.54 mm pitch; 17.78 mm x 29.48 mm x 10.67 mm body	SOT1756-1
MPXV5050DP	SENSOR6F	Pressure sensor, 5 V, 0/50 kPa, Port, SO8, plastic, small outline package; 8 terminals; 2.54 mm pitch; 12.06 mm x 12.06 mm x 7.62 mm body	SOT1693-1
MPXV5050GP	SO8	Pressure sensor, 5 V, 0/50 kPa, Port, 8 terminals; 2.54 mm pitch; 12.06 mm x 12.06 mm x 3.38 mm body body	SOT1693-3
MPXV5050GC6T1	SO8	Pressure sensor, 5 V, 0/540 kPa, small outline package, Port, 8 terminals; 2.54 mm pitch; 10.67 mm x 10.67 mm x 12.96 mm body	SOT18454-1

1.1 Ordering options

Table 2. Ordering options

ORDERING INFORMATION								
Device Name	Case No.	# of Ports			Pressure Type			Device Marking
		None	Single	Dual	Gauge	Differential	Absolute	
Unibody Package (MPX5050 Series)								
MPX5050DP	867C			•		•		MPX5050DP
Small Outline Package (MPXV5050 Series)								
MPXV5050GP	1369		•		•			MPXV5050GP
MPXV5050DP	1351			•		•		MPXV5050DP
MPXV5050GC6T1	482A		•		•			MPXV5050G

2 Pinning information

2.1 Pinning

Figure 1. MPX5050DP - SOT1756-1 - Case 867C-05

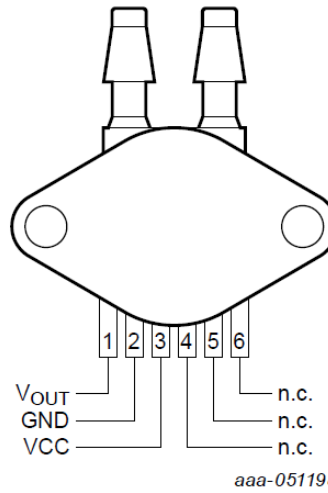


Figure 2. MPXV5050DP Case 1351-01

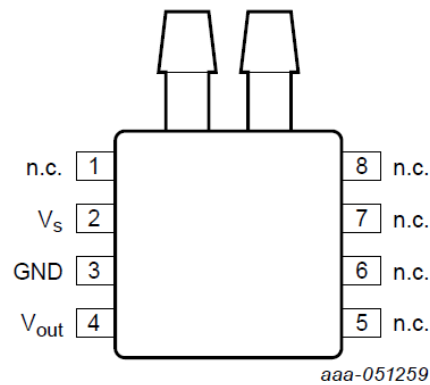


Figure 3. MPXV5050GP Case 1369-01

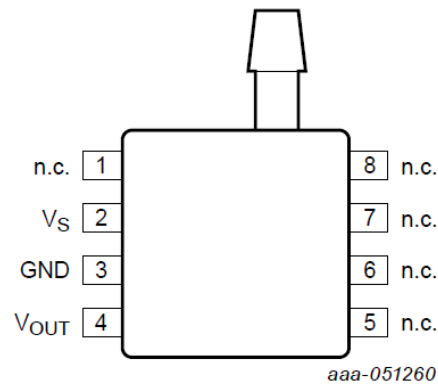
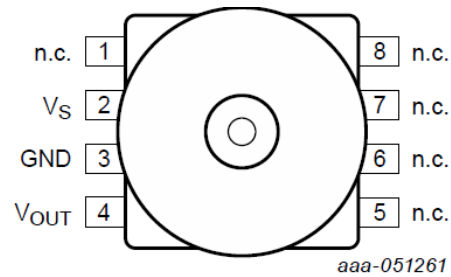


Figure 4. MPXV5050GC6T1 – Case 482A-01



2.2 Pin description

Table 3. Pin descriptions - MPX5050DP

Symbol	Pin	Description
V _{OUT}	1	V _{OUT}
Ground	2	Ground
V _{CC}	3	Supply voltage
N.C.	4	No connection.
N.C.	5	No connection.
N.C.	6	No connection.

Table 4. Pin descriptions - MPXV5050GC6T1, MPXV5050DP, and MPXV5050GP

Symbol	Pin	Description
N.C.	1	No connect
V _S	2	Supply voltage
Ground	3	Ground
V _{OUT}	4	V _{OUT}
N.C.	5	No connect
N.C.	6	No connect
N.C.	7	No connect
N.C.	8	No connect

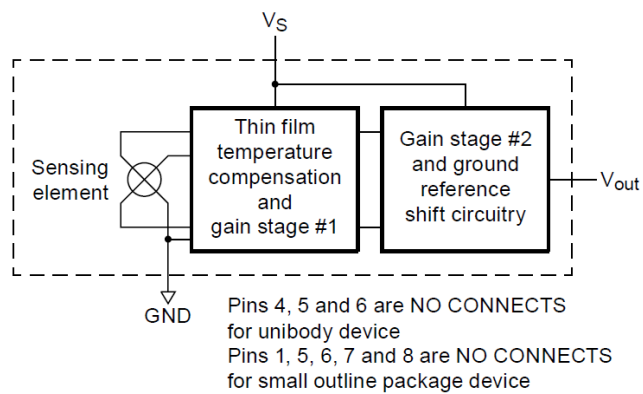
3 Limiting values

Table 5. Limiting values [1]

Rating	Symbol	Value	Unit
Maximum pressure ($P_1 > P_2$)	P_{max}	200	kPa
Storage temperature	T_{stg}	-40 to +125	°C
Operating temperature	T_A	-40 to +125	°C

[1] Exposure beyond the specified limits may cause permanent damage or degradation to the device. Figure 5 shows a block diagram of the internal circuitry integrated on a pressure sensor chip.

Figure 5. Fully Integrated Pressure Sensor Schematic



aaa-051151

4 Recommended operating conditions

Table 6. Recommended operating conditions ($V_S = 5.0$ Vdc, $T_A = 25$ °C unless otherwise noted, $P_1 > P_2$. Decoupling circuit shown in Figure 8 required to meet electrical specifications.)

Characteristic	Symbol	Min	Typ	Max	Unit
Pressure Range ^[1]	P_{OP}	0	—	50	kPa
Supply Voltage ^[2]	V_S	4.75	5.0	5.25	Vdc
Supply Current	I_o	—	7.0	10	mAdc
Minimum Pressure Offset ^[3] (0 °C to 85 °C) @ $V_S = 5.0$ Volts	V_{off}	0.088	0.2	0.313	Vdc
Full Scale Output ^[4] (0 °C to 85 °C) @ $V_S = 5.0$ Volts	V_{FSO}	4.587	4.7	4.813	Vdc
Full Scale Span ^[5] (0 °C to 85 °C) @ $V_S = 5.0$ Volts	V_{FSS}	—	4.5	—	Vdc
Accuracy ^[6] (0 °C to 85 °C)	—	—	—	±2.5	% V_{FSS}
Sensitivity	V/P	—	90	—	mV/kPa
Response Time ^[7]	t_R	—	1.0	—	ms
Output Source Current at Full Scale Output	I_{o+}	—	0.1	—	mAdc
Warm-Up Time ^[8]	—	—	20	—	ms
Offset Stability ^[9]	—	—	±0.5	—	% V_{FSS}

- 1.0 kPa (kiloPascal) equals 0.145 psi.
- Device is ratiometric within this specified excitation range.
- Offset (V_{off}) is defined as the output voltage at the minimum rated pressure.
- Full Scale Output (V_{FSO}) is defined as the output voltage at the maximum or full rated pressure.
- Full Scale Span (V_{FSS}) is defined as the algebraic difference between the output voltage at full rated pressure and the output voltage at the minimum rated pressure.
- Accuracy (error budget) consists of the following:
 - Linearity: Output deviation from a straight line relationship with pressure over the specified pressure range.
 - Temperature Hysteresis: Output deviation at any temperature within the operating temperature range, after the temperature is cycled to and from the minimum or maximum operating temperature points, with zero differential pressure applied.
 - Pressure Hysteresis: Output deviation at any pressure within the specified range, when this pressure is cycled to and from the minimum or maximum rated pressure at 25 °C.
 - TcSpan: Output deviation over the temperature range of 0 °C to 85 °C, relative to 25 °C.
 - TcOffset: Output deviation with minimum pressure applied, over the temperature range of 0 °C to 85 °C, relative to 25 °C.
 - Variation from Nominal: The variation from nominal values, for Offset or Full Scale Span, as a percent of V_{FSS} at 25 °C.
- Response Time is defined as the time for the incremental change in the output to go from 10% to 90% of its final value when subjected to a specified step change in pressure.
- Warm-up Time is defined as the time required for the product to meet the specified output voltage after the Pressure has been stabilized.
- Offset Stability is the product's output deviation when subjected to 1000 hours of Pulsed Pressure, Temperature Cycling with Bias Test

5 On-chip Temperature Compensation and Calibration

Figure 7 illustrates the Differential/Gauge Sensing Chip in the basic chip carrier (Case 867). A fluorosilicone gel isolates the die surface and wire bonds from the environment, while allowing the pressure signal to be transmitted to the sensor diaphragm.

The MPX5050/MPXV5050G series pressure sensor operating characteristics, and internal reliability and qualification tests are based on use of dry air as the pressure media. Media, other than dry air, may have adverse effects on sensor performance and long-term reliability. Contact the factory for information regarding media compatibility in your application.

Figure 6 shows the sensor output signal relative to pressure input. Typical, minimum, and maximum output curves are shown for operation over a temperature range of 0 °C to 85 °C using the decoupling circuit shown in Figure 9. The output will saturate outside of the specified pressure range.

Figure 9 shows the recommended decoupling circuit for interfacing the output of the integrated sensor to the A/D input of a microprocessor or microcontroller. Proper decoupling of the power supply is recommended.

Figure 6. Output vs. pressure differential

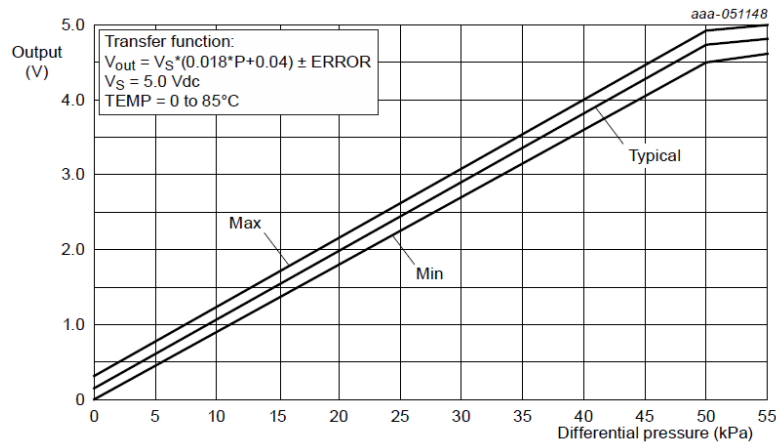


Figure 7. Cross-sectional diagram (not to scale)

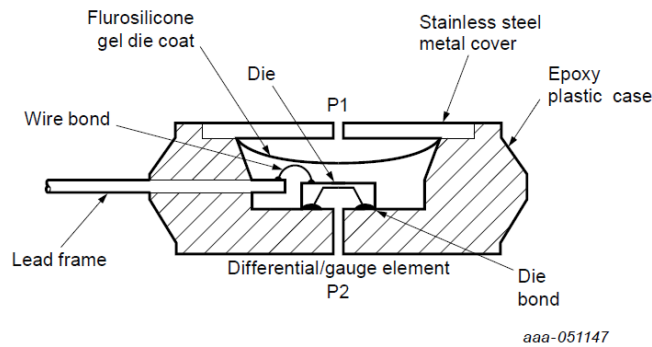


Figure 8. Nominal Transfer Value

$$V_{OUT} = V_S (P \times 0.018 + 0.04) \pm (\text{Pressure Error} \times \text{Temp. Factor} \times 0.018 \ V_S)$$

$$V_S = 5.0 \ V \ \pm 0.25 \ Vdc$$

Figure 9. Recommended power supply decoupling and output filtering (For additional output filtering, refer to application note AN1646)

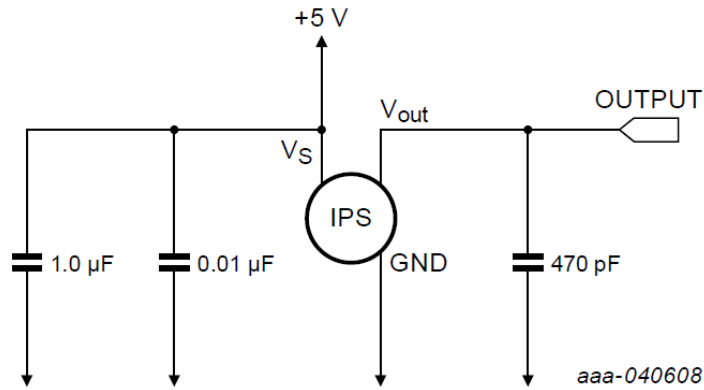


Figure 10. Temperature error band

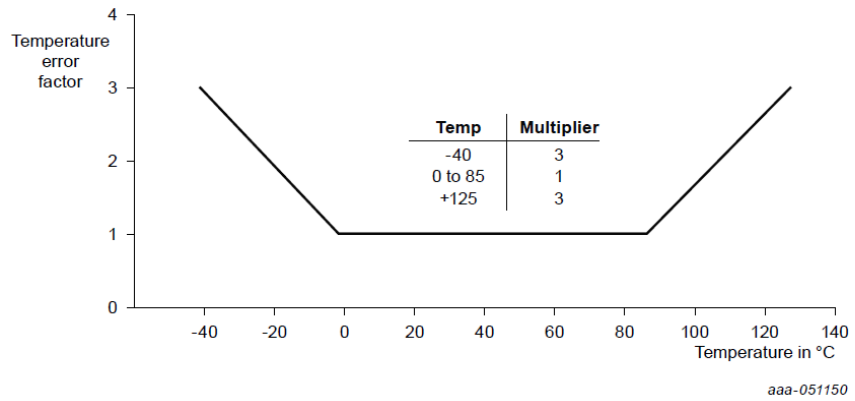
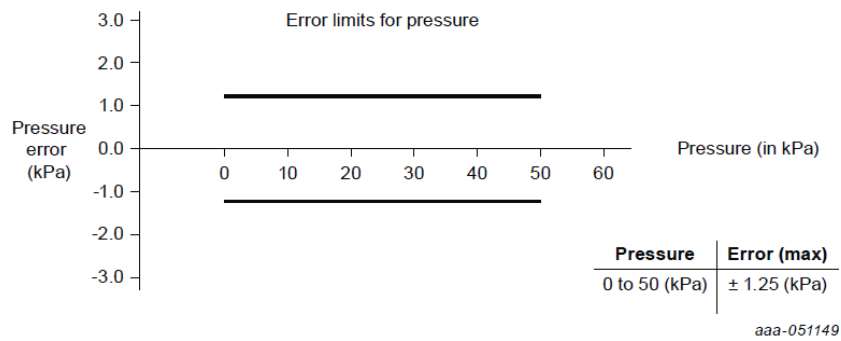


Figure 11. Pressure error band



6 Pressure (P1) / Vacuum (P2) side identification table

ST designates the two sides of the pressure sensor as the Pressure (P1) side and the Vacuum (P2) side. The Pressure (P1) side is the side containing fluorosilicone gel which protects the die from harsh media. The MPX pressure sensor is designed to operate with positive differential pressure applied, $P1 > P2$.

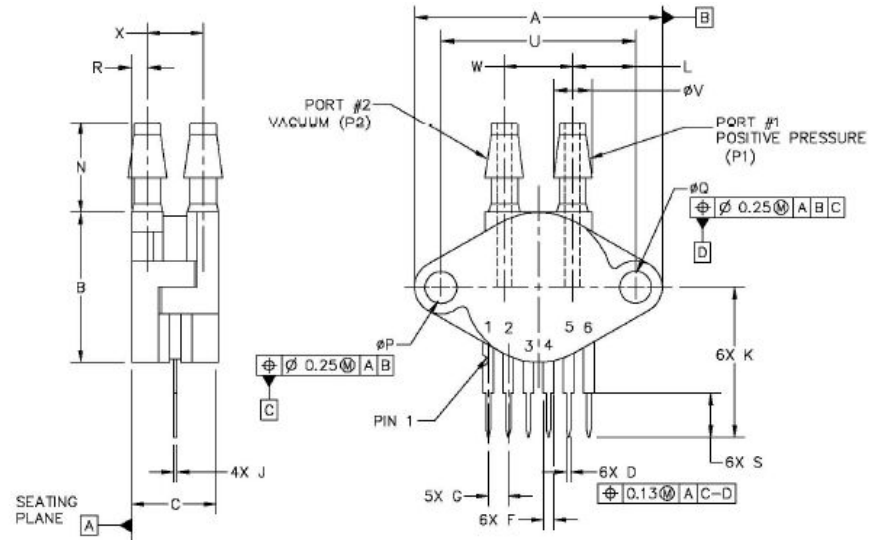
The Pressure (P1) side may be identified by using [Table 7](#).

Table 7. Pressure (P1) side identification

Part Number	Case Type	Pressure (P1) Side Identifier
MPX5050DP	867C	Side with Part Marking
MPXV5050GP	1369	Side with Port Attached
MPXV5050DP	1351	Side with Part Marking
MPXV5050GC6/T1	482A	Vertical Port Attached

7 Package outline

Figure 12. MPX5050DP - SOT17560-1 - Case 867C package outline ¹



DIM	MILLIMETERS MIN	MILLIMETERS MAX	DIM	MILLIMETERS MIN	MILLIMETERS MAX	NOTES:
A	29.08	29.85	P	$\phi 3.89$	$\phi 4.04$	
B	17.40	18.16	Q	$\phi 3.89$	$\phi 4.04$	
C	10.29	11.05	R	1.60	2.11	
D	0.68	0.84	S	5.59	6.10	
F	1.22	1.63	U	23.11	BSC	
G	2.54	BSC	V	4.62	4.93	
J	0.36	0.41	W	7.87	8.38	
K	17.65	18.42	X	6.30	7.06	
L	7.37	7.62				
N	10.67	11.18				
<small>© NXP SEMICONDUCTORS N.V. ALL RIGHTS RESERVED</small>			MECHANICAL OUTLINE		PRINT VERSION NOT TO SCALE	
TITLE:				DOCUMENT NO: 98ASB42797B		REV: H
SENSOR, 4 LEAD UNIBODY				STANDARD: NON-JEDEC		
				SOT1756-1		29 JAN 2016

1. Refer to Table 3. Pin descriptions - MPX5050DP.

Figure 14. MPX5050DP - SOT1693-1 - Case 1351-01 package outline notes ²

NOTES:

1. CONTROLLING DIMENSION: INCH
2. INTERPRET DIMENSIONS AND TOLERANCES PER ASME Y14.5M-1994.
3. DIMENSIONS DO NOT INCLUDE MOLD FLASH OR PROTRUSIONS. MOLD FLASH AND PROTRUSIONS SHALL NOT EXCEED .006 PER SIDE.
4. DIMENSION DOES NOT INCLUDE DAMBAR PROTRUSION. ALLOWABLE DAMBAR PROTRUSION SHALL BE .008 MAXIMUM.

STYLE 1:

PIN 1: GND
 PIN 2: +Vout
 PIN 3: Vs
 PIN 4: -Vout
 PIN 5: N/C
 PIN 6: N/C
 PIN 7: N/C
 PIN 8: N/C

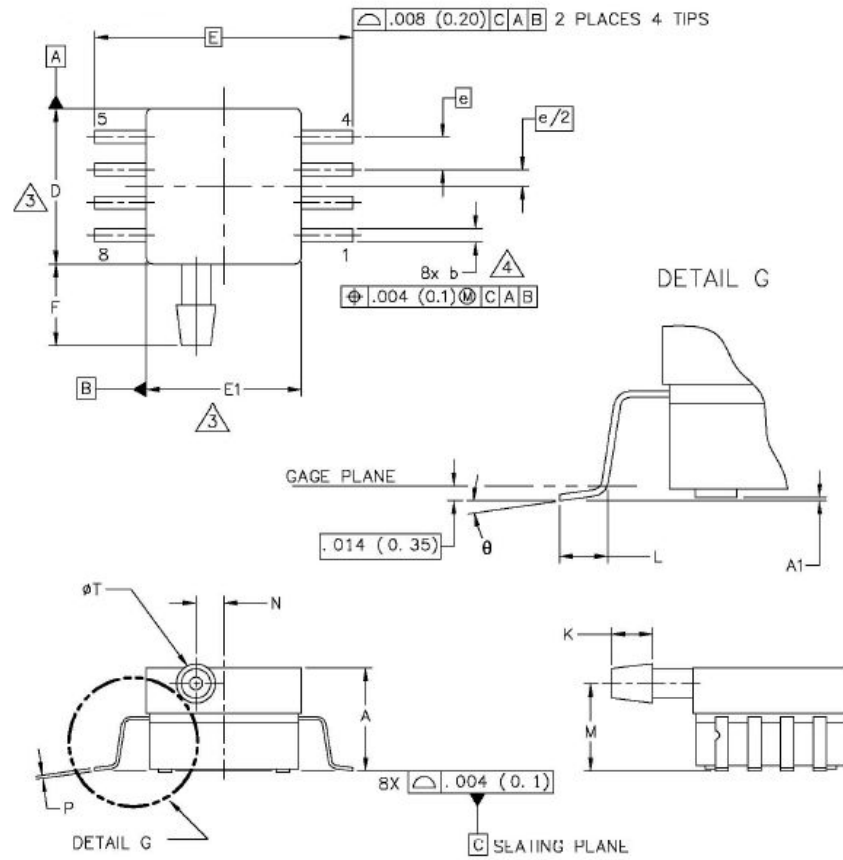
STYLE 2:

PIN 1: N/C
 PIN 2: Vs
 PIN 3: GND
 PIN 4: Vout
 PIN 5: N/C
 PIN 6: N/C
 PIN 7: N/C
 PIN 8: N/C

© NXP SEMICONDUCTORS N. V. ALL RIGHTS RESERVED	MECHANICAL OUTLINE	PRINT VERSION NOT TO SCALE	
TITLE: 8 LD SNSR, DUAL PORT		DOCUMENT NO: 98ASA99255D	REV: B
		STANDARD: NON-JEDEC	
		SOT1693-1	14 MAR 2016

2. Style 1 is not applicable for the parts covered by this datasheet.

Figure 15. MPX5050GP - SOT1693-3 - Case 1369-01 package outline



© NXP SEMICONDUCTORS N.V. ALL RIGHTS RESERVED	MECHANICAL OUTLINE	PRINT VERSION NOT TO SCALE
TITLE:	8 LD SOP, SIDE PORT	DOCUMENT NO: 98ASA99303D REV: E
		STANDARD: NON-JEDEC
		SOT1693-3 14 MAR 2016

Figure 16. MPX5050GP - SOT1693-3 - Case 1369-01 package outline notes

NOTES:

1. CONTROLLING DIMENSION: INCH

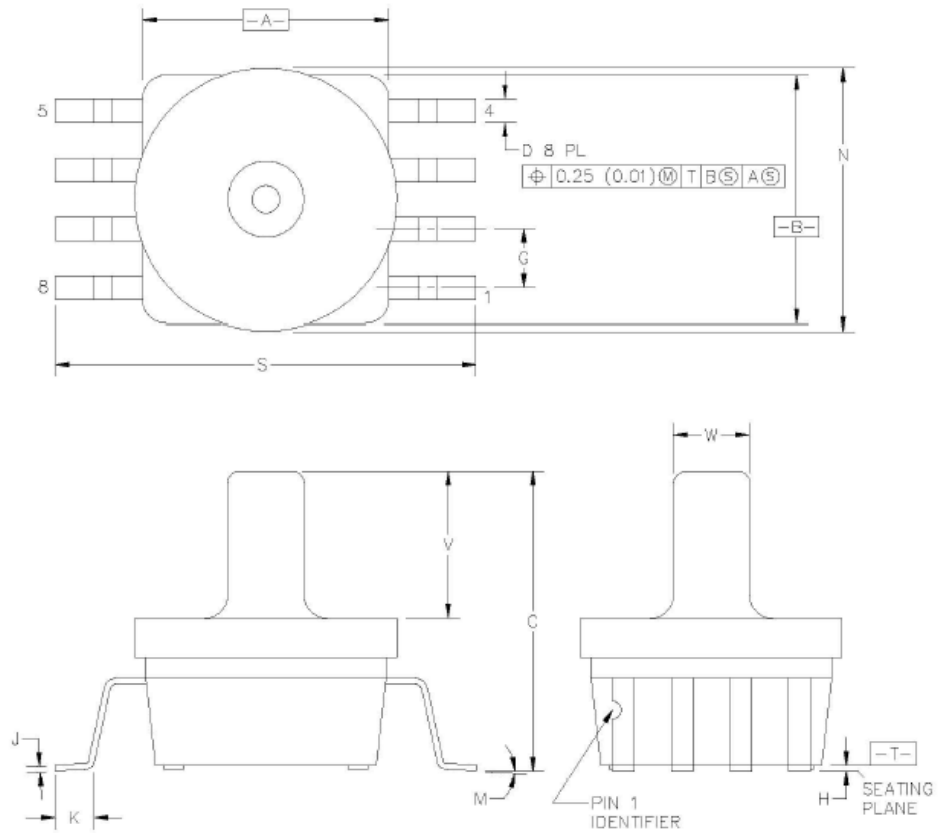
2. INTERPRET DIMENSIONS AND TOLERANCES PER ASME Y14.5M-1994.

DIMENSIONS DO NOT INCLUDE MOLD FLASH OR PROTRUSIONS.
 MOLD FLASH AND PROTRUSIONS SHALL NOT EXCEED .006 (0.152) PER SIDE.

DIMENSION DOES NOT INCLUDE DAMBAR PROTRUSION. ALLOWABLE DAMBAR
 PROTRUSION SHALL BE .008 (0.203) MAXIMUM.

DIM	INCHES		MILLIMETERS		DIM	INCHES		MILLIMETERS	
	MIN	MAX	MIN	MAX		MIN	MAX	MIN	MAX
A	.300	.330	7.62	8.38	Ø	0'	7'	0'	7'
A1	.002	.010	0.05	0.25	-	----	----	----	----
b	.038	.042	0.96	1.07	-	----	----	----	----
D	.465	.485	11.81	12.32	-	----	----	----	----
E	.717 BSC		18.21 BSC		-	----	----	----	----
E1	.465	.485	11.81	12.32	-	----	----	----	----
e	.100 BSC		2.54 BSC		-	----	----	----	----
F	.245	.255	6.22	6.47	-	----	----	----	----
K	.120	.130	3.05	3.30	-	----	----	----	----
L	.061	.071	1.55	1.80	-	----	----	----	----
M	.270	.290	6.86	7.36	-	----	----	----	----
N	.080	.090	2.03	2.28	-	----	----	----	----
P	.009	.011	0.23	0.28	-	----	----	----	----
T	.115	.125	2.92	3.17	-	----	----	----	----
© NXP SEMICONDUCTORS N. V. ALL RIGHTS RESERVED			MECHANICAL OUTLINE			PRINT VERSION NOT TO SCALE			
TITLE:					DOCUMENT NO: 98ASA99303D		REV: E		
8 LD SOP, SIDE PORT					STANDARD: NON-JEDEC				
					SOT1693-3		14 MAR 2016		

Figure 17. MPXV5050GC6T1 - SOT1854-1, Case 482-A package outline



© NXP SEMICONDUCTORS N.V. ALL RIGHTS RESERVED	MECHANICAL OUTLINE	PRINT VERSION NOT TO SCALE
TITLE: SENSOR UNIBODY, 11.33 X 11.33 X 12.955 PKG, 2.54 PITCH, 8 I/O	DOCUMENT NO: 98ASB17757C	REV: C
	STANDARD: NON-JEDEC	
	SOT1854-1	13 JUL 2017

Figure 18. MPXV5050GC6T1 - SOT1854-1, Case 482-A package outline notes

NOTES:

1. DIMENSIONING AND TOLERANCING PER ANSI Y14.5M-1982.
2. CONTROLLING DIMENSION: INCH.
3. DIMENSION 'A' AND 'B' DO NOT INCLUDE MOLD PROTRUSION.
4. MAXIMUM MOLD PROTRUSION 0.15 (0.006).
5. ALL VERTICAL SURFACES 5° TYPICAL DRAFT.

DIM	INCHES		MILLIMETERS			
	MIN	MAX	MIN	MAX		
A	0.415	0.425	10.54	10.79		
B	0.415	0.425	10.54	10.79		
C	0.500	0.520	12.70	13.21		
D	0.038	0.042	0.96	1.07		
G	0.100	BSC	2.54	BSC		
H	0.002	0.010	0.05	0.25		
J	0.009	0.011	0.23	0.28		
K	0.061	0.071	1.55	1.80		
M	0°	7°	0°	7°		
N	0.444	0.448	11.28	11.38		
S	0.709	0.725	18.01	18.41		
V	0.245	0.255	6.22	6.48		
W	0.115	0.125	2.92	3.17		
© NXP SEMICONDUCTORS N.V. ALL RIGHTS RESERVED			MECHANICAL OUTLINE		PRINT VERSION NOT TO SCALE	
TITLE: SENSOR UNIBODY, 11.33 X 11.33 X 12.955 PKG, 2.54 PITCH, 8 I/O			DOCUMENT NO: 98ASB17757C		REV: C	
			STANDARD: NON-JEDEC			
			SOT1854-1		13 JUL 2017	

Revision history

Table 8. Document revision history

Date	Revision	Changes
22-May-2026	1	Initial release from ST, rebranded NXP document

Contents

1	Ordering information	2
1.1	Ordering options	2
2	Pinning information	3
2.1	Pinning	3
2.2	Pin description	4
3	Limiting values	5
4	Recommended operating conditions	6
5	On-chip Temperature Compensation and Calibration	7
6	Pressure (P1) / Vacuum (P2) side identification table	9
7	Package outline	10
	Revision history	17
	List of tables	19
	List of figures	20



List of tables

Table 1.	Ordering information.	2
Table 2.	Ordering options	2
Table 3.	Pin descriptions - MPX5050DP	4
Table 4.	Pin descriptions - MPXV5050GC6T1, MPXV5050DP, and MPXV5050GP	4
Table 5.	Limiting values ^[1]	5
Table 6.	Recommended operating conditions ($V_S = 5.0$ Vdc, $T_A = 25$ °C unless otherwise noted, $P1 > P2$. Decoupling circuit shown in Figure 8 required to meet electrical specifications.)	6
Table 7.	Pressure (P1) side identification.	9
Table 8.	Document revision history	17

List of figures

Figure 1.	MPX5050DP - SOT1756-1 - Case 867C-05	3
Figure 2.	MPXV5050DP Case 1351-01	3
Figure 3.	MPXV5050GP Case 1369-01	3
Figure 4.	MPXV5050GC6T1 – Case 482A-01	4
Figure 5.	Fully Integrated Pressure Sensor Schematic	5
Figure 6.	Output vs. pressure differential	7
Figure 7.	Cross-sectional diagram (not to scale)	7
Figure 8.	Nominal Transfer Value	7
Figure 9.	Recommended power supply decoupling and output filtering (For additional output filtering, refer to application note AN1646)	8
Figure 10.	Temperature error band	8
Figure 11.	Pressure error band	8
Figure 12.	MPX5050DP - SOT17560-1 - Case 867C package outline ¹	10
Figure 13.	MPX5050DP - SOT1693-1 - Case 1351-01 package outline	11
Figure 14.	MPX5050DP - SOT1693-1 - Case 1351-01 package outline notes ²	12
Figure 15.	MPX5050GP - SOT1693-3 - Case 1369-01 package outline	13
Figure 16.	MPX5050GP - SOT1693-3 - Case 1369-01 package outline notes	14
Figure 17.	MPXV5050GC6T1 - SOT1854-1, Case 482-A package outline	15
Figure 18.	MPXV5050GC6T1 - SOT1854-1, Case 482-A package outline notes	16

IMPORTANT NOTICE – READ CAREFULLY

STMicroelectronics NV and its subsidiaries (“ST”) reserve the right to make changes, corrections, enhancements, modifications, and improvements to ST products and/or to this document at any time without notice.

In the event of any conflict between the provisions of this document and the provisions of any contractual arrangement in force between the purchasers and ST, the provisions of such contractual arrangement shall prevail.

The purchasers should obtain the latest relevant information on ST products before placing orders. ST products are sold pursuant to ST’s terms and conditions of sale in place at the time of order acknowledgment.

The purchasers are solely responsible for the choice, selection, and use of ST products and ST assumes no liability for application assistance or the design of the purchasers’ products.

No license, express or implied, to any intellectual property right is granted by ST herein.

Resale of ST products with provisions different from the information set forth herein shall void any warranty granted by ST for such product.

If the purchasers identify an ST product that meets their functional and performance requirements but that is not designated for the purchasers’ market segment, the purchasers shall contact ST for more information.

ST and the ST logo are trademarks of ST. For additional information about ST trademarks, refer to www.st.com/trademarks. All other product or service names are the property of their respective owners.

Information in this document supersedes and replaces information previously supplied in any prior versions of this document.

© 2026 STMicroelectronics – All rights reserved