

8-Kbit serial I²C bus EEPROM operating up to 105 °C, with 1.8 V core and 1.2 V-compatible I/Os



WLCSP (CT)
(0.703 x 0.713 mm)

Product status

Prerelease

Product label



Features

I²C interface

- Compatible with the following I²C bus modes:
 - 400 kHz (Fast-mode)
 - 100 kHz (Standard-mode)

Memory

- 8-Kbit (1-Kbyte) of EEPROM
- Page size: 16-byte

Supply voltage

- Voltage range: 1.8 V ± 5%

Input/output

- 1.2 V-compatible

Temperature

- Extended operating temperature range: -40 °C to + 105 °C

Fast write cycle time

- Byte and page write within 5 ms (3.5 ms typical)

Performance

- Enhanced ESD/latch-up protection: 3 kV (HBM)
- More than 4 million write cycles
- More than 200-year data retention

Ultralow-power current consumption

- 240 nA (typical) in standby mode
- 130 µA (typical) for read current
- 100 µA (typical) for write current

Advanced features

- Hardware write protection of the whole memory array
- Random and sequential read modes

Package

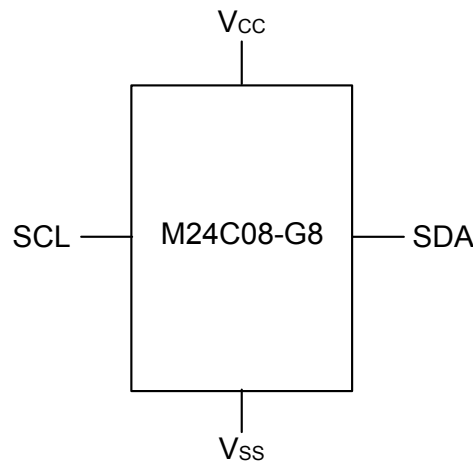
- WLCSP4 4-ball (ECOPACK2-compliant)

1 Description

The **M24C08-G8** is an 8-Kbit I²C-compatible EEPROM (electrically erasable programmable read-only memory) organized as 1 K × 8 bits. It can operate with a supply voltage of 1.8 V ± 5%, with a maximum clock frequency of 400 kHz, over an extended temperature range from -40 °C to +105 °C, This product offers 1.2 V-compatible I/Os, and it is available in 4-ball wafer level chip scale packaging (WLCSP).

1.1 Logic diagram

Figure 1. Logic diagram



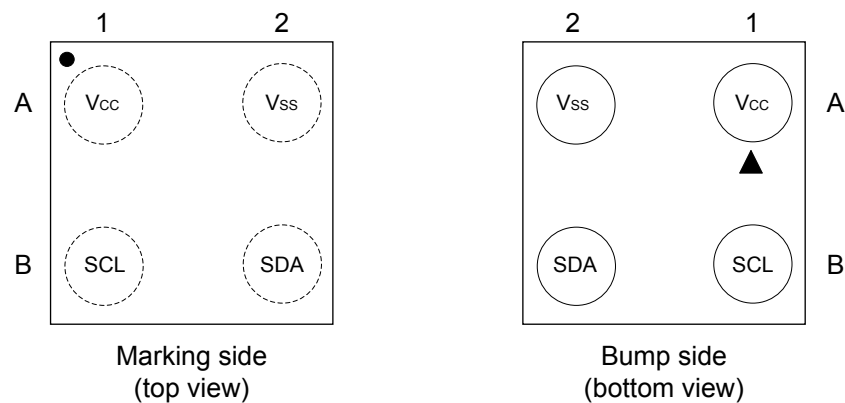
DT74680v1

Table 1. Signal names

Signal name	Function	Direction
SDA	Serial data	I/O
SCL	Serial clock	Input
V _{CC}	Supply voltage	-
V _{SS}	Ground	-

1.2 Device packaging

Figure 2. 4-bump WLCSP connections



DT51099V2

Table 2. Signal names

Signal name	Position
V _{CC}	A1
V _{SS}	A2
SCL	B1
SDA	B2

2 Signal description

2.1 Serial clock (SCL)

SCL is an input. The signal applied on the SCL input is used to strobe the data available on SDA(in) and to output the data on SDA(out).

2.2 Serial data (SDA)

SDA is an input/output used to transfer data in or out of the device. SDA(out) is an open drain output that may be wired-AND with other open drain or open collector signals on the bus. A pull-up resistor must be connected from serial data (SDA) to V_{CC} (Figure 10 indicates how to calculate the value of the pull-up resistor).

2.3 V_{SS} (ground)

V_{SS} is the reference for the V_{CC} supply voltage.

2.4 Supply voltage (V_{CC})

2.4.1 Operating supply voltage (V_{CC})

Prior to selecting the memory and issuing instructions to it, a valid and stable V_{CC} voltage within the specified [$V_{CC}(\min)$, $V_{CC}(\max)$] range must be applied (see operating conditions in [Section 8: DC and AC parameters](#)). To secure a stable DC supply voltage, it is recommended to decouple the V_{CC} line with a suitable capacitor (usually 10 nF to 100 nF) close to the V_{CC}/V_{SS} package pins.

This voltage must remain stable and valid until the end of the transmission of the instruction and, for a write instruction, until the completion of the internal write cycle (t_W).

2.4.2 Power-up conditions

The V_{CC} voltage has to rise continuously from 0 V up to the minimum V_{CC} operating voltage (see operating conditions in [Section 8: DC and AC parameters](#)).

2.4.3 Device reset

To prevent inadvertent write operations during power-up, a power-on-reset (POR) circuit is included.

At power-up, the device does not respond to any instruction until V_{CC} has reached the internal reset threshold voltage. This threshold is lower than the minimum V_{CC} operating voltage (see operating conditions in [Section 8: DC and AC parameters](#)). When V_{CC} exceeds the POR threshold, the device is reset and enters the Standby Power mode; however, the device must not be accessed until V_{CC} reaches a valid and stable DC voltage within the specified [$V_{CC}(\min)$, $V_{CC}(\max)$] range (see operating conditions in [Section 8: DC and AC parameters](#)).

In a similar way, during power-down (continuous decrease in V_{CC}), the device must not be accessed when V_{CC} drops below $V_{CC}(\min)$. When V_{CC} drops below the internal reset threshold voltage, the device stops responding to any instruction sent to it.

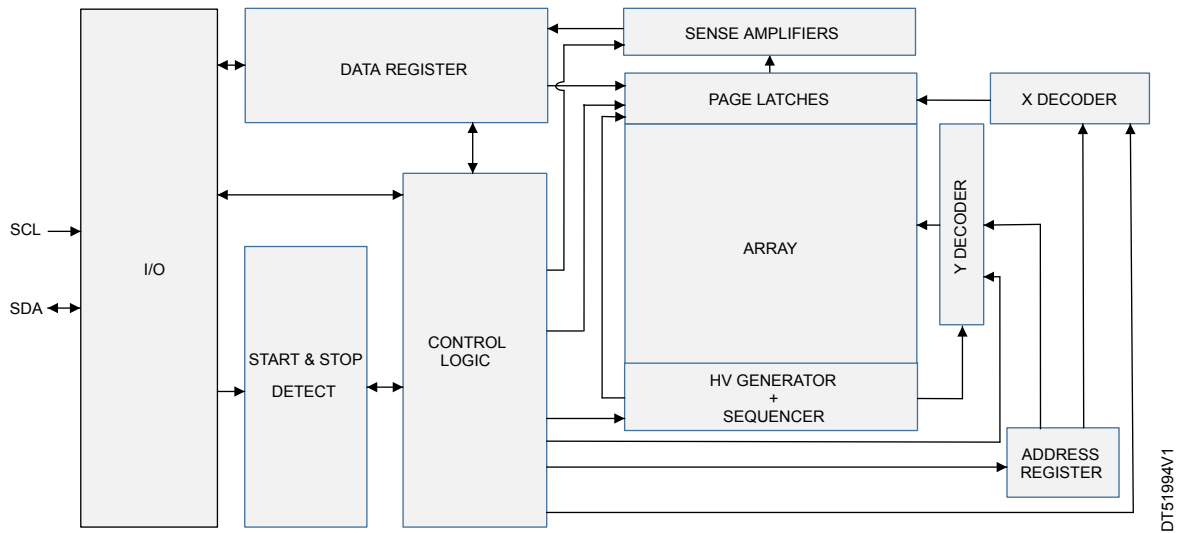
2.4.4 Power-down conditions

During power-down, the device must be in the standby power mode (mode reached after decoding a stop condition, with no internal write cycle in progress).

3 Block diagram

The block diagram of the device is shown below.

Figure 3. Block diagram

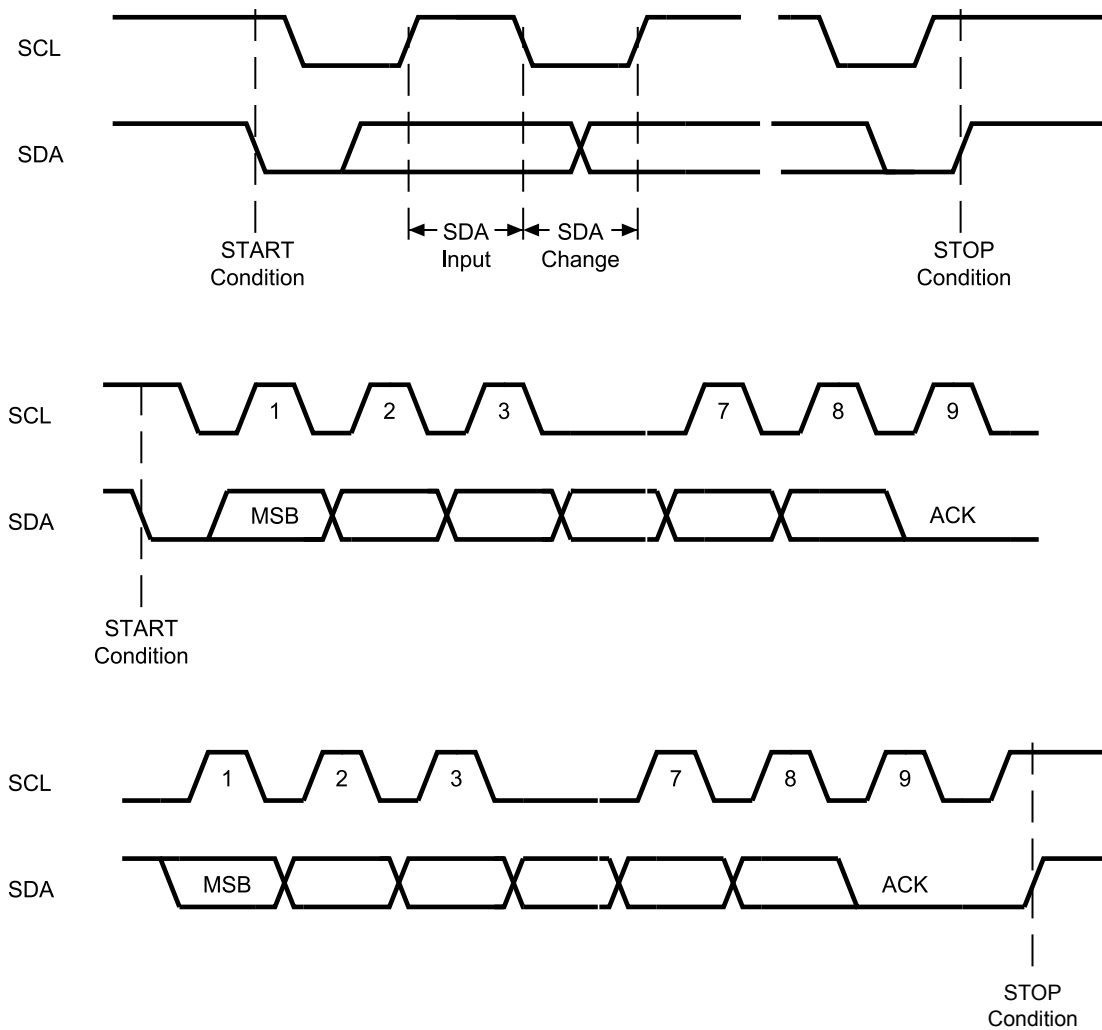


DT51994V1

4 Device operation

The device supports the I²C protocol summarized in Figure 4. Any device that sends data onto the bus is defined as a transmitter, and any device that reads the data is defined as a receiver. The device that controls the data transfer is known as the bus controller, and the other as the target device. A data transfer can only be initiated by the bus controller, which also provides the serial clock for synchronization. The device is always a target in all communications.

Figure 4. I²C bus protocol



DT00792BV1

4.1 Start condition

The start condition is identified by a falling edge of serial data (SDA) while the serial clock (SCL) is stable in the high state. This condition must precede any data transfer instruction. The device continuously monitors the SDA and the SCL for a start signal, except during a write cycle.

4.2 Stop condition

The stop condition is identified by a rising edge of serial data (SDA) while serial clock (SCL) is stable in the high state. This condition terminates the communication between the device and the bus controller. A read instruction followed by NO ACK can be followed by a stop condition to force the device into the standby mode.

A stop condition at the end of a write instruction triggers the internal write cycle.

4.3 Data input

During data input, the device samples the serial data (SDA) on the rising edge of serial clock (SCL). For proper device operation, the SDA must be stable during the rising edge of SCL, and the SDA signal must change only when the SCL is driven low.

4.4 Acknowledge bit (ACK)

The acknowledge bit is used to indicate a successful byte transfer. The bus transmitter, whether a bus controller or target device, releases serial data (SDA) after sending eight bits of data. During the ninth clock pulse period, the receiver pulls SDA low to acknowledge the receipt of the eight data bits.

4.5 Device addressing

To start communication between the bus controller and the target device, the bus controller must initiate a Start condition. If then, the bus controller sends the device select code and byte address as specified in [Table 3](#) and [Table 4](#).

When the device select code is received, the device responds only if the device select code value matches with the values specified in [Table 3](#).

If a match occurs, the corresponding device gives an acknowledgment on serial data (SDA) during the ninth bit time. If the device does not acknowledge the device select code, the device deselects itself from the bus, and goes into standby mode (therefore it does not acknowledge the device select code) after a stop condition.

The eighth bit is the R/W bit (\overline{RW}). This bit is set to 1 for read and 0 for write operations.

The 1 Kbytes (8 Kbit) are addressed with 10 address bits, the eight lower address bits being defined by the address byte and the most significant address bits (A9 and A8) being included in the device select code (see [Table 3](#)).

Table 3. Device select code

Features	Device type identifier				Chip enable address	MSB address		\overline{RW}
	Bit 7 ⁽¹⁾	Bit 6	Bit 5	Bit 4	Bit 3	Bit 2	Bit 1	Bit 0 ⁽²⁾
Memory	1	0	1	0	0	A9	A8	\overline{RW}

1. MSB is sent first

2. LSB

Note: The most significant bit, b7, is sent first.

Table 4. Byte address

Features	Bit 7	Bit 6	Bit 5	Bit 4	Bit 3	Bit 2	Bit 1	Bit 0
Memory	A7	A6	A5	A4	A3	A2	A1	A0

Note: The most significant bit, b7, is sent first.

5 Instructions

5.1 Write operations on memory array

Following a start condition, the bus controller sends a device select code with the R/W bit (\overline{RW}) reset to 0. The device acknowledges this, as shown in [Figure 5. Byte write mode sequences](#), and waits for one address byte. The device responds to the address byte with an acknowledge bit, and then waits for the data byte.

When the bus controller generates a stop condition immediately after a data byte ACK bit (in the tenth bit time slot), either at the end of a byte write or a page write, the internal write cycle (t_W) is triggered. A stop condition at any other time slot does not trigger the internal write cycle.

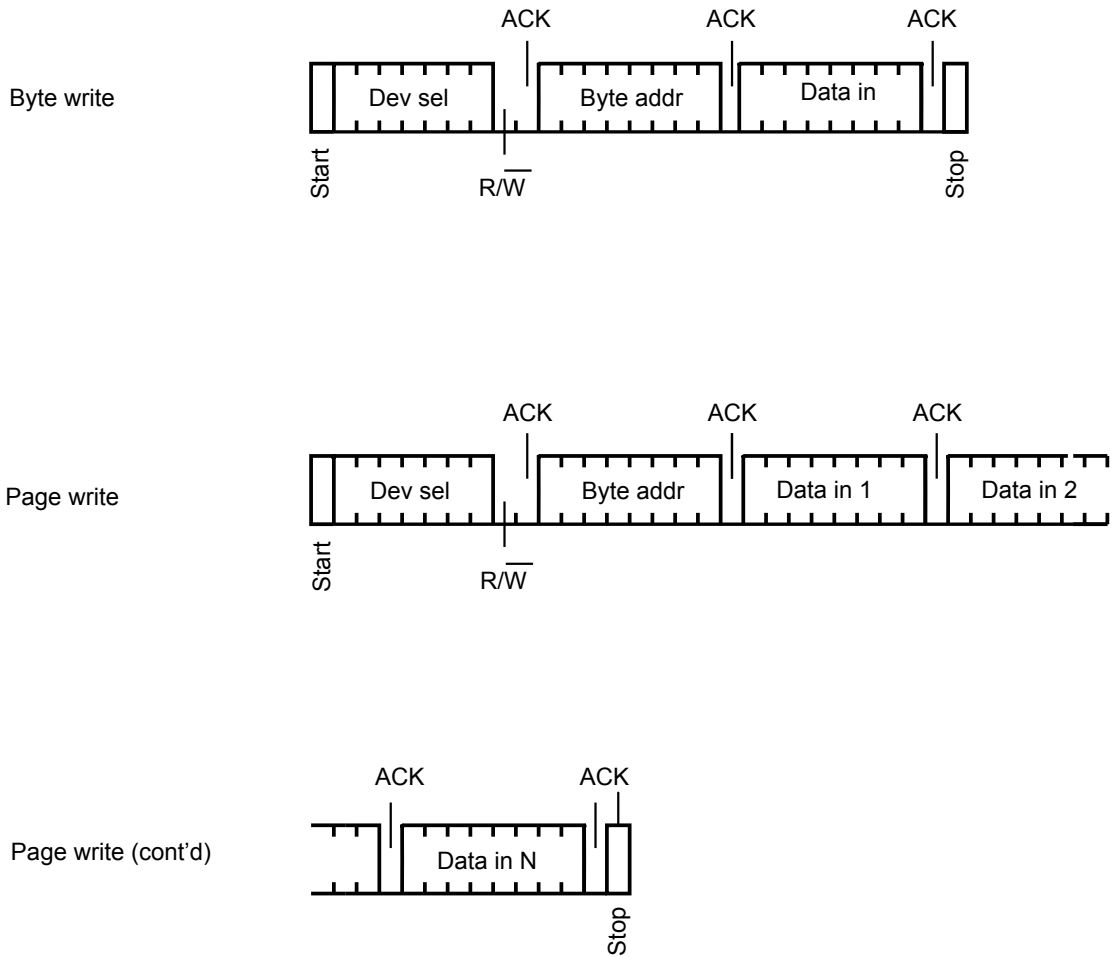
After the stop condition and the successful completion of an internal write cycle (t_W), the device internal address counter is automatically incremented to point to the next byte after the last modified byte.

During the internal write cycle, serial data (SDA) is disabled internally, and the device does not respond to any requests.

5.1.1 Byte write

After the device select code and the address byte, the bus controller sends one data byte and the device replies with ACK. The bus controller terminates the transfer by generating a stop condition, as shown in Figure 5 :

Figure 5. Byte write mode sequences



DT54816V1

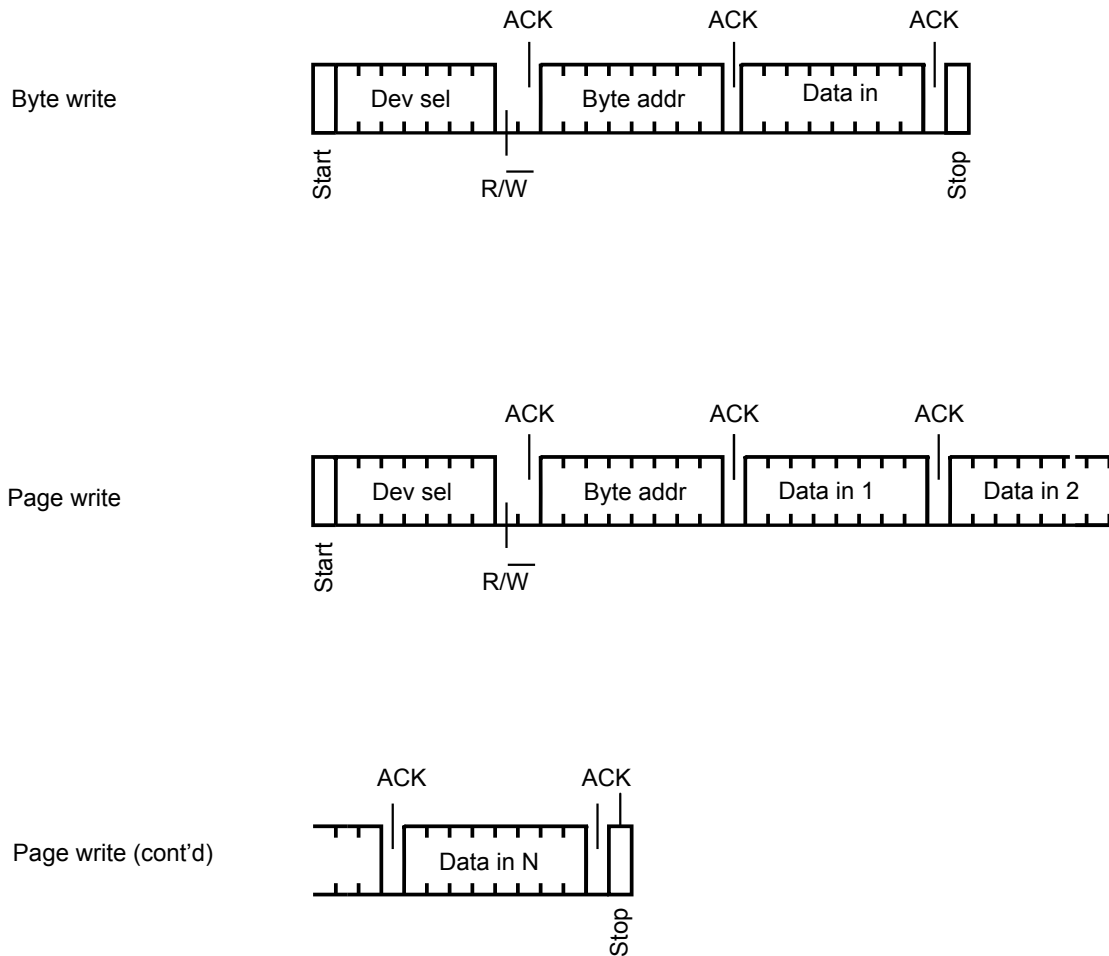
5.1.2 Page write

The page write mode allows up to 16 bytes to be written in a single write cycle, provided they are all located in the same page. This means that the most significant memory address bits, from A9 to A4, are the same. If more bytes are sent than fit up to the end of the page, a roll-over occurs: the bytes exceeding the page end are written on the same page, from location 0.

The bus controller sends from 1 to 16 bytes of data, each is acknowledged by the device. The contents of the addressed memory location are then modified, and each data byte is followed by an ACK, as shown in Figure 6. After each transferred byte, the internal page address counter is incremented.

The transfer is terminated by the bus controller generating a stop condition.

Figure 6. Page write mode sequences



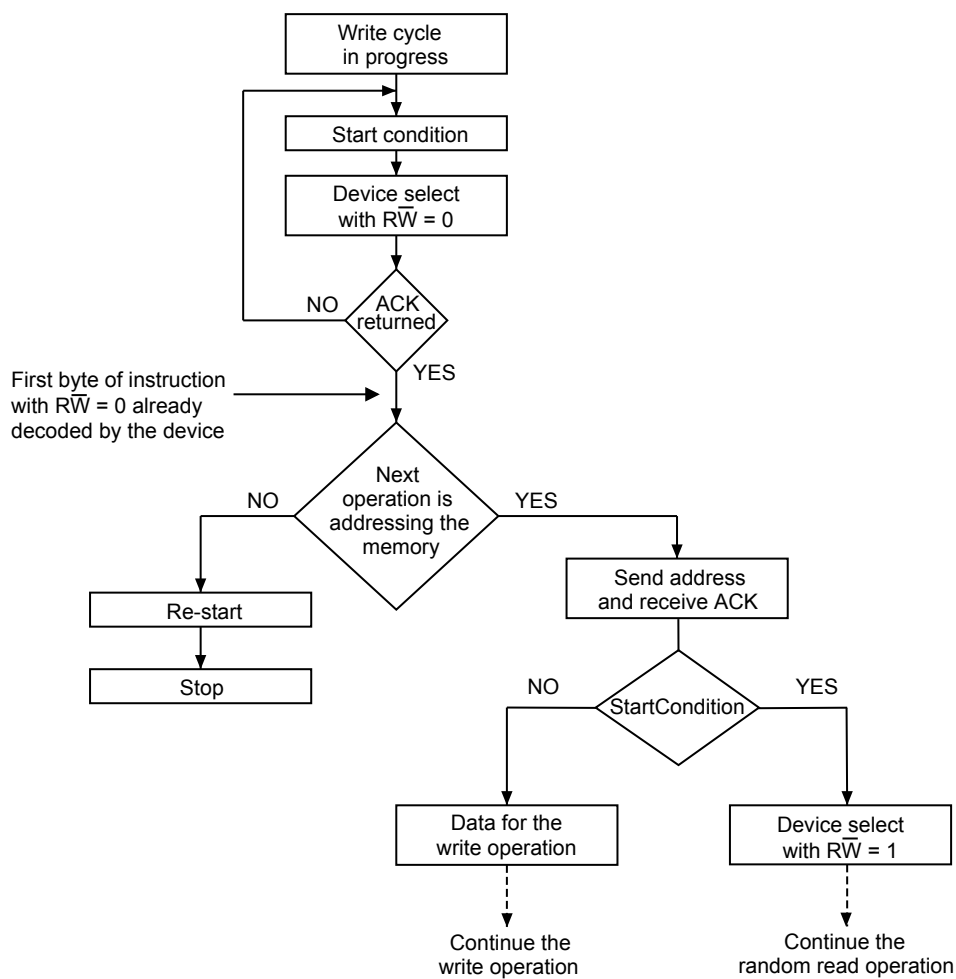
DT54816V1

5.1.3 Minimizing write delays by polling on ACK

The maximum write time (t_w) is shown in the AC characteristics table in Section 8: DC and AC parameters, but the typical time is shorter. The bus controller can implement a polling sequence to utilize this feature. The sequence is shown in Figure 7.

- Initial condition: a write cycle is in progress.
- Step 1: the bus controller issues a start condition followed by a device select code (the first byte of the new instruction).
- Step 2: if the device is busy with the internal write cycle, NO ACK is returned and the bus controller goes back to step 1. If the device has terminated the internal write cycle, it responds with an ACK, indicating that it is ready to receive the second part of the instruction (the first byte of this instruction has been sent during step 1).

Figure 7. Write-cycle polling flow using ACK



DT01847eV1

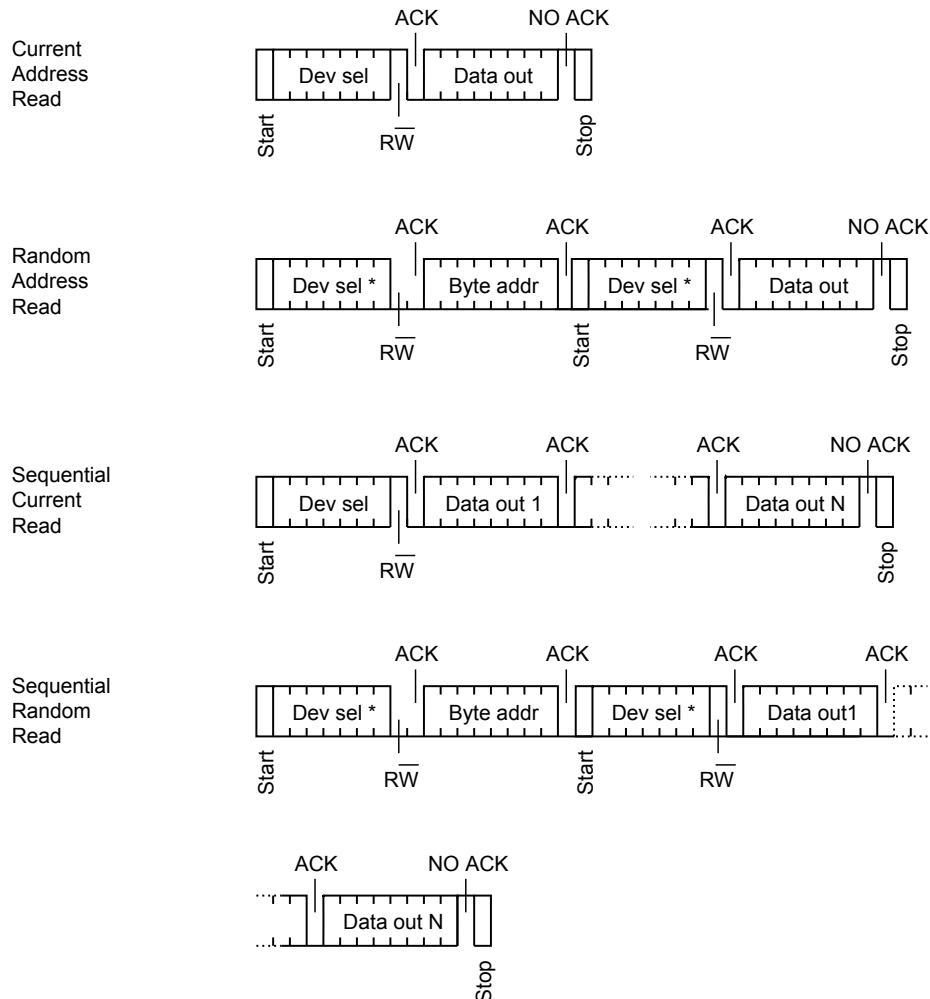
1. The seven most significant bits of the device select code in a random read (bottom-right box in the figure) must match those of the device select code in the write operation (polling instruction in the figure).

5.2 Read operations on memory array

After the successful completion of a read operation, the device internal address counter is incremented by one, to point to the next byte address.

After each byte read (data out), the device waits for an acknowledgement (data in) during the ninth bit time. If the bus controller does not acknowledge during this time, the device terminates the data transfer and switches to its standby mode.

Figure 8. Read mode sequences



The seven most significant bits of the first device select code of a random read must match those of the device select code in the write operation.

5.2.1 Random address read

A dummy write is first performed to load the address into address counter (as shown in Figure 8) but without sending a stop condition. Then, the bus controller sends another start condition, and repeats the device select code, with the R/W bit (\overline{RW}) set to 1. The device acknowledges this, and outputs the contents of the addressed byte. The bus controller must not acknowledge the byte, and terminates the transfer with a stop condition.

5.2.2 Current address read

For the current address read operation, following a start condition, the bus controller only sends a device select code with the R/W bit (\overline{RW}) set to 1. The device acknowledges this, and outputs the byte addressed by the internal address counter. The counter is then incremented. The bus controller terminates the transfer with a stop condition, as shown in Figure 8, without acknowledging the byte.

When accessing the memory, it is safer to use the random address read instruction (this instruction loads the address counter with the byte location to read in the memory, see [Section 5.2.1: Random address read](#)) instead of the current address read instruction.

5.2.3 Sequential read

This operation can be used after a current address read or a random address read. The bus controller does not acknowledge the data byte output and sends additional clock pulses so that the device continues to output the next byte in sequence. To terminate the stream of bytes, the bus controller must not acknowledge the last byte, and must generate a stop condition, as shown in [Figure 8](#).

The output data comes from consecutive addresses, with the internal address counter automatically incremented after each byte output. After reaching the last memory address, the address counter rolls-over, and the device continues to output data from the memory address 00h.

6 Initial delivery state

The device is delivered with all the memory array bits set to 1 (each byte contains FFh).

7 Maximum ratings

Stressing the device outside the ratings listed in Table 5 may permanently damage it. These are stress ratings only, and functional operation of the device at these, or any other conditions outside those indicated in the operating sections of this specification, is not implied. Exposure to absolute maximum rating conditions for extended periods may affect device reliability.

Table 5. Absolute maximum ratings

Symbol	Parameter	Min.	Max.	Unit
T _{AMB}	Ambient operating temperature	-40	130	°C
T _{STG}	Storage temperature	-65	150	°C
I _{OL}	DC output current (SDA = 0)	-	5	mA
V _{IO}	Input or output range	-0.50	6.5	V
V _{CC}	Supply voltage	-0.50	6.5	V
V _{ESD}	Electrostatic pulse (human body model) ⁽¹⁾	-	3000	V

1. Positive and negative pulses applied on different combinations of pin connections, according to AEC-Q100-002 (compliant with ANSI/ESDA/JEDEC JS-001 standard, C1 = 100 pF, R1 = 1500 Ω).

8 DC and AC parameters

This section summarizes the operating and measurement conditions, and the DC and AC characteristics.

Table 6. Operating conditions

Symbol	Parameter	Min.	Max.	Unit
V_{CC}	Supply voltage	1.71	1.89	V
T_A	Ambient operating temperature	-40	105	°C
f_C	Operating clock frequency	-	400	kHz

Table 7. Input parameters

Symbol	Parameter	Test condition	Min.	Max.	Unit
$C_{IN}^{(1)}$	Input capacitance (SDA)	-	-	8	pF
$C_{IN}^{(1)}$	Input capacitance (other pins)	-	-	6	pF

1. Specified by design - Not tested in production

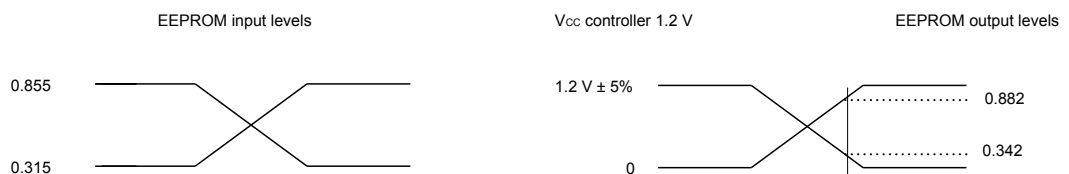
Table 8. AC measurement conditions

Symbol	Parameter	Min.	Max.	Unit
C_{bus}	Load capacitance	-	100	pF
-	SCL input rise/fall time, SDA input fall time	-	50	ns
-	Input levels ⁽¹⁾	0.315 to 0.855		V
-	Output levels ⁽²⁾	0.342 to 0.882		V

1. Timing reference level: 0.25 V_{CC} controller - 0.75 V_{CC} controller

2. Timing reference level: 0.3 V_{CC} controller - 0.7 V_{CC} controller

Figure 9. AC measurement I/O waveforms



DT54567V2

Table 9. Cycling performance

Symbol	Parameter	Test condition	Max	Unit
N_{cycle}	Write cycle endurance ⁽¹⁾	$T_A \leq 25\text{ °C}, V_{CC}(\min) < V_{CC} < V_{CC}(\max)$	4,000,000	Write cycle ⁽²⁾
		$T_A = 85\text{ °C}, V_{CC}(\min) < V_{CC} < V_{CC}(\max)$	1,200,000	
		$T_A = 105\text{ °C}, V_{CC}(\min) < V_{CC} < V_{CC}(\max)$	100 000	

1. Evaluated by characterization and qualification- Not tested in production.

2. A write cycle is executed when either a page write, or a byte write instruction is decoded.

Table 10. Memory cell data retention

Parameter	Test condition	Min.	Unit
Data retention ⁽¹⁾	$T_A = 55\text{ }^\circ\text{C}$	200	Year

1. The data retention behavior is checked in production, while the data retention limit defined in this table is extracted from characterization and qualification results.

Table 11. DC characteristics

Symbol	Parameter	Test conditions (in addition to those in Table 6)	Min.	Max.	Unit
I_{LI}	Input leakage current (SCL, SDA)	$V_{IN} = V_{SS}$ or V_{CC} device in standby mode	-	± 2	μA
I_{LO}	Output leakage current	SDA in high-Z, external voltage applied on SDA: V_{SS} or V_{CC}	-	± 2	μA
I_{CC}	Supply current (Read)	$V_{CC} = 1.8\text{ V} \pm 5\%$	-	0.8 ⁽¹⁾	mA
I_{CC0} ⁽²⁾	Supply current (Write)	During t_W	-	1 ⁽³⁾	mA
I_{CC1}	Standby supply current	Device not selected, ⁽⁴⁾ $V_{IN} = 0\text{ V}$ or 1.14 V	-	1.5 ⁽⁵⁾	μA
V_{IL}	Input low voltage (SCL, SDA)	$V_{CC} = 1.8\text{ V} \pm 5\%$	-0.45	0.315	V
V_{IH}	Input high voltage (SCL, SDA)	-	0.855	1.32	V
V_{OL}	Output low voltage	$I_{OL} = 1\text{ mA}$, $V_{CC} = 1.8\text{ V}$	-	0.2	V

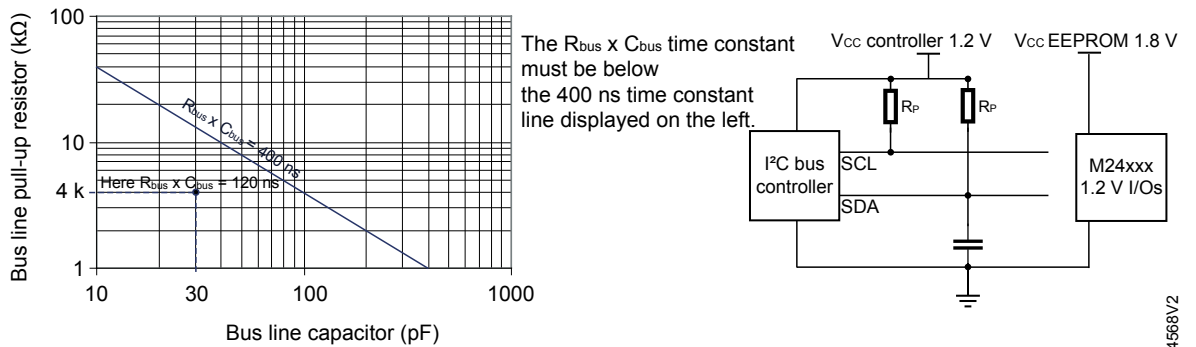
1. 130 μA typical value at 1.8 V and 25 $^\circ\text{C}$. Evaluated by characterization - Not tested in production.
2. Evaluated by characterization - Not tested in production
3. 100 μA typical value at 1.8 V and 25 $^\circ\text{C}$. Evaluated by characterization - Not tested in production.
4. The device is not selected after power-up, after a read instruction (after the stop condition), or after the completion of the internal write cycle t_W (t_W is triggered by the correct decoding of a write instruction).
5. 240 nA typical value at 1.8 V and 25 $^\circ\text{C}$. Evaluated by characterization - Not tested in production.

Table 12. AC characteristics (Fast-mode)

Symbol	Alternate	Parameter	Min.	Max.	Unit
f_C	f_{SCL}	Clock frequency	-	400	kHz
t_{CHCL}	t_{HIGH}	Clock pulse width high	600	-	ns
t_{CLCH}	t_{LOW}	Clock pulse width low	1300	-	ns
$t_{QL1QL2}^{(1)}$	t_F	SDA (out) fall time	20 ⁽²⁾	300	ns
t_{XH1XH2}	t_R	Input signal rise time	⁽³⁾	400 ⁽³⁾	ns
t_{XL1XL2}	t_F	Input signal fall time	⁽³⁾	400 ⁽³⁾	ns
t_{DVCH}	$t_{SU:DAT}$	Data in set up time	100	-	ns
t_{CLDX}	$t_{HD:DAT}$	Data in hold time	0	-	ns
$t_{CLQX}^{(4)}$	t_{DH}	Data out hold time	100	-	ns
$t_{CLQV}^{(5)}$	t_{AA}	Clock low to next data valid (access time)	-	900	ns
t_{CHDL}	$t_{SU:STA}$	Start condition setup time	600	-	ns
t_{DLCL}	$t_{HD:STA}$	Start condition hold time	600	-	ns
t_{CHDH}	$t_{SU:STO}$	Stop condition set up time	600	-	ns
t_{DHDL}	t_{BUF}	Time between stop condition and next start condition	1300	-	ns
t_W	t_{WR}	Write cycle time	-	5	ms
$t_{NS}^{(1)}$	-	Pulse width ignored (input filter on SCL and SDA) - Single glitch	-	100	ns

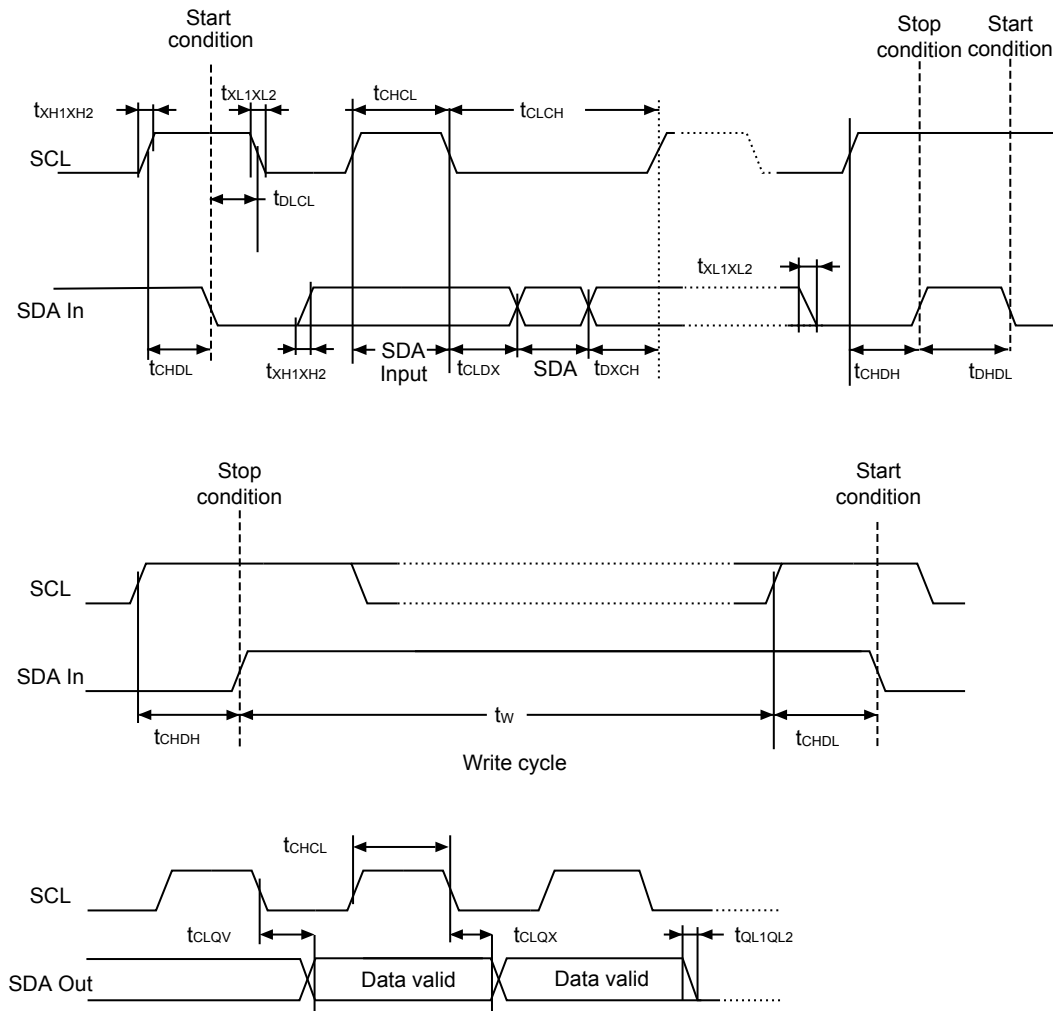
1. Evaluated by characterization - Not tested in production.
2. With $C_L = 10$ pF.
3. It is recommended by the I²C specification that the input signal rise and fall times be more than 20 ns and less than 300 ns when $f_C < 400$ kHz.
4. To avoid spurious Start and Stop conditions, a minimum delay is placed between SCL = 1 and the falling or rising edge of SDA.
5. t_{CLQV} is the time (from the falling edge of SCL) required by the SDA bus line to reach either 0.342 V or 0.882 V, assuming that $R_{bus} \times C_{bus}$ time constant is within the values specified in Figure 10 .

Figure 10. R_{bus} value versus bus parasitic capacitance (C_{bus}) for an I²C bus ($f_c = 400$ kHz)



DT54568V2

Figure 11. AC waveforms



DT74678V1

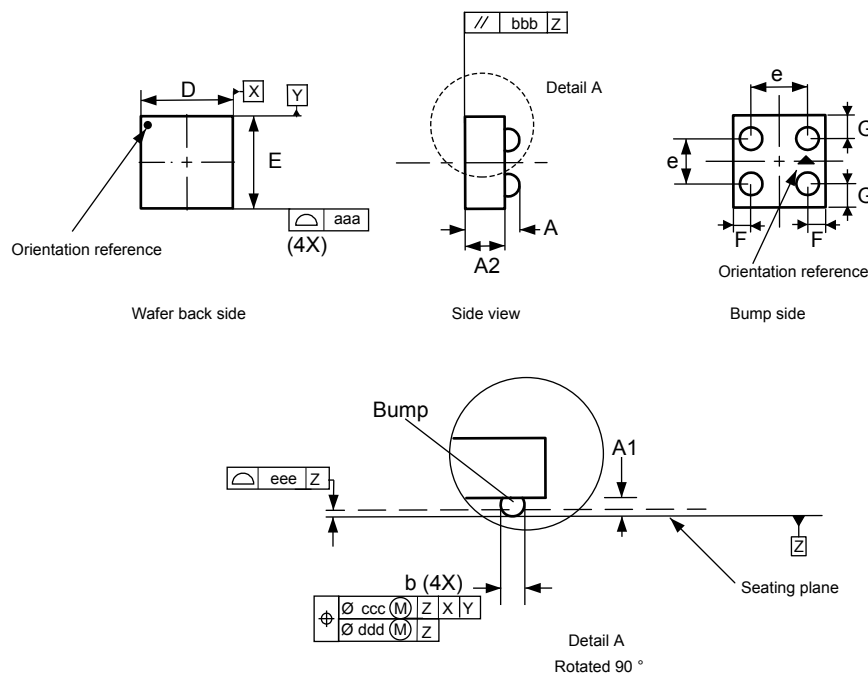
9 Package information

To meet environmental requirements, ST offers these devices in different grades of **ECOPACK** packages, depending on their level of environmental compliance. ECOPACK specifications, grade definitions, and product status are available at: www.st.com. ECOPACK is an ST trademark.

9.1 WLCSP4 (CT) package information

This WLCSP4 is a 4 ball, 0.703 x 0.713 mm, 0.4 mm pitch, wafer level chip scale package.

Figure 12. WLCSP4 - Outline



1. Drawing is not to scale.
2. Dimension is measured at the maximum bump diameter parallel to primary datum Z.
3. Primary datum Z and seating plane are defined by the spherical crowns of the bump.
4. Bump position designation per JESD 95-1, SPP-010.

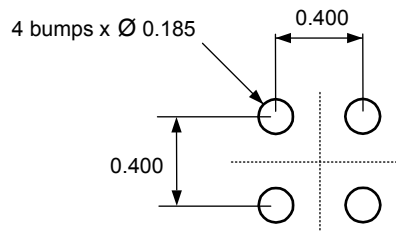
(Vc_WLCSP4_ME_V1

Table 13. WLCSP4 - Mechanical data

Symbol	Millimeters			Inches ⁽¹⁾		
	Min	Typ	Max	Min	Typ	Max
A	0.270	0.295	0.330	0.0106	0.0116	0.0130
A1	-	0.095	-	-	0.0037	-
A2	-	0.200	-	-	0.0079	-
b	-	0.185	-	-	0.0073	-
D	-	0.703	0.723	-	0.0277	0.0285
E	-	0.713	0.733	-	0.0281	0.0288
e	-	0.400	-	-	0.0157	-
F	-	0.152	-	-	0.0060	-
G	-	0.156	-	-	0.0061	-
aaa	-	0.110	-	-	0.0043	-
bbb	-	0.110	-	-	0.0043	-
ccc	-	0.110	-	-	0.0043	-
ddd	-	0.060	-	-	0.0024	-
eee	-	0.060	-	-	0.0024	-

1. Values in inches are converted from mm and rounded to 4 decimal digits.

9.1.1 WLCSP4 package footprint

Figure 13. WLCSP4 - Footprint example


Vc_WLCSP4_FP_V1

1. Dimensions are expressed in millimeters.

10 Ordering information

Table 14. Ordering information scheme

Example:	M24	C08-	G	CT	8	T	P	/T
Device type	M24 = I ² C serial access EEPROM		G = V _{CC} = 1.8 V ± 5% and 1.2 V on I/Os	CT = Thin 4-bump WLCSP	8 = Industrial-plus device tested with extended test flow over -40 to 105 °C	T = Tape and reel packing Blank = Tube packing	P or G = ECOPACK2	/T = Manufacturing technology code
Device function								
Operating voltage	C08 = 8-Kbit (1 K x 8 bit)							
Package ⁽¹⁾								
Device grade								
Option								
Plating technology								
Process ⁽²⁾								

1. ECOPACK2 (RoHS compliant and free of brominated, chlorinated and antimony oxide flame retardants).
2. The process letter appears on the device package (marking) and on the shipment box. Contact your nearest ST Sales Office for further information.

Note: Parts marked as “ES” or “E” are not yet qualified and therefore not approved for use in production. ST is not responsible for any consequences resulting from such use. In no event will ST be liable for the customer using any of these engineering samples in production. ST’s Quality department must be contacted prior to any decision to use these engineering samples to run a qualification activity.

Revision history

Table 15. Document revision history

Date	Version	Changes
03-Dec-2024	1	Initial release.

Contents

1	Description	2
1.1	Logic diagram	2
1.2	Device packaging	2
2	Signal description	4
2.1	Serial clock (SCL)	4
2.2	Serial data (SDA)	4
2.3	V _{SS} (ground)	4
2.4	Supply voltage (V _{CC})	4
2.4.1	Operating supply voltage (V _{CC})	4
2.4.2	Power-up conditions	4
2.4.3	Device reset	4
2.4.4	Power-down conditions	4
3	Block diagram	5
4	Device operation	6
4.1	Start condition	6
4.2	Stop condition	6
4.3	Data input	7
4.4	Acknowledge bit (ACK)	7
4.5	Device addressing	7
5	Instructions	8
5.1	Write operations on memory array	8
5.1.1	Byte write	9
5.1.2	Page write	10
5.1.3	Minimizing write delays by polling on ACK	11
5.2	Read operations on memory array	12
5.2.1	Random address read	12
5.2.2	Current address read	12
5.2.3	Sequential read	13
6	Initial delivery state	14
7	Maximum ratings	15
8	DC and AC parameters	16
9	Package information	20
9.1	WLCSP4 (CT) package information	20
9.1.1	WLCSP4 package footprint	21



10	Ordering information22
	Revision history23
	List of tables26
	List of figures27

List of tables

Table 1.	Signal names	2
Table 2.	Signal names	3
Table 3.	Device select code.	7
Table 4.	Byte address.	7
Table 5.	Absolute maximum ratings	15
Table 6.	Operating conditions	16
Table 7.	Input parameters	16
Table 8.	AC measurement conditions	16
Table 9.	Cycling performance	16
Table 10.	Memory cell data retention	17
Table 11.	DC characteristics	17
Table 12.	AC characteristics (Fast-mode)	18
Table 13.	WLCSP4 - Mechanical data.	21
Table 14.	Ordering information scheme.	22
Table 15.	Document revision history	23

List of figures

Figure 1.	Logic diagram	2
Figure 2.	4-bump WLCSP connections	2
Figure 3.	Block diagram	5
Figure 4.	I ² C bus protocol	6
Figure 5.	Byte write mode sequences	9
Figure 6.	Page write mode sequences	10
Figure 7.	Write-cycle polling flow using ACK	11
Figure 8.	Read mode sequences	12
Figure 9.	AC measurement I/O waveforms	16
Figure 10.	R _{bus} value versus bus parasitic capacitance (C _{bus}) for an I ² C bus (f _C = 400 kHz)	19
Figure 11.	AC waveforms	19
Figure 12.	WLCSP4 - Outline	20
Figure 13.	WLCSP4 - Footprint example	21

IMPORTANT NOTICE – READ CAREFULLY

STMicroelectronics NV and its subsidiaries (“ST”) reserve the right to make changes, corrections, enhancements, modifications, and improvements to ST products and/or to this document at any time without notice. Purchasers should obtain the latest relevant information on ST products before placing orders. ST products are sold pursuant to ST’s terms and conditions of sale in place at the time of order acknowledgment.

Purchasers are solely responsible for the choice, selection, and use of ST products and ST assumes no liability for application assistance or the design of purchasers’ products.

No license, express or implied, to any intellectual property right is granted by ST herein.

Resale of ST products with provisions different from the information set forth herein shall void any warranty granted by ST for such product.

ST and the ST logo are trademarks of ST. For additional information about ST trademarks, refer to www.st.com/trademarks. All other product or service names are the property of their respective owners.

Information in this document supersedes and replaces information previously supplied in any prior versions of this document.

© 2024 STMicroelectronics – All rights reserved