

## Data logger and event logger based on M24LR64-R EEPROM

Data brief – production data

### Features

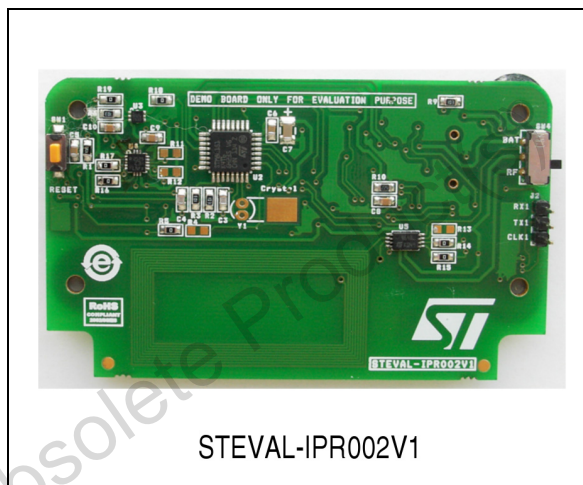
- Evaluation system demonstrating dual communication interfaces (RF and I<sup>2</sup>C) of M24LR64 EEPROM
- Demonstration board for recording temperature, motion (MEMS), humidity and light (photo diode) parameters in a dual EEPROM M24LR64-R
- Two operation modes:
  - RFID mode for reading and writing the EEPROM using an RFID kit (RFID starter kit reader used)
  - I<sup>2</sup>C read and write using a microcontroller (STM8L used for demonstration)
- An inductive antenna of 20 mm x 40 mm size for RF communication with starter kit RFID reader
- Graphical user interface to evaluate the logged information from EEPROM
- The board also works with an Android NFC application called DatalogV3
- RoHS compliant

### Description

The STEVAL-IPR002V1 is based on the M24LR64-R, a dual interface EEPROM which targets a wide range of applications such as industrial or medical equipment and consumer electronics.

RFID (13.56 MHz) and I<sup>2</sup>C serial communication are the two interfaces available with EEPROM. This demo is an autonomous battery-powered RFID tag with logging capability for recording and storing the sensor data of the following sensors: temperature sensor, humidity sensor, vibration, freefall, tamper and light.

The value of different sensors is stored inside the EEPROM and then at later stages these logged values can be retrieved over the RFID interface



for evaluation. This data logger can be inserted along with any transported article and this article can then be tracked throughout the supply chain, and the data can be scanned at any point using an RFID reader.

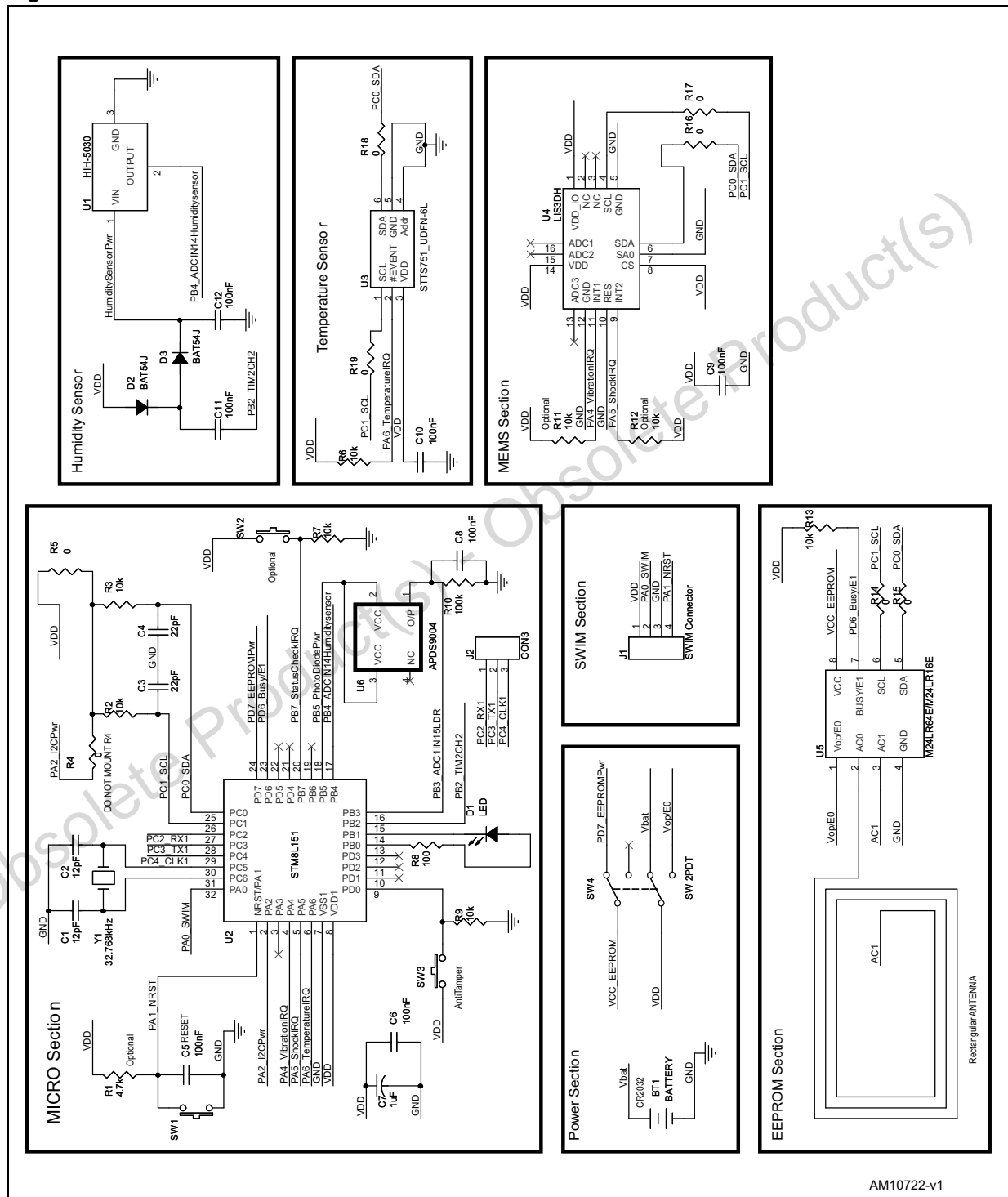
This system can operate in two modes: data logger mode and event logger mode.

In data logger mode, the system reads all the sensor values once every second and stores the same inside EEPROM. The system stops logging the data when the allocated memory for a particular sensor gets filled.

In event logger mode, the system configures the threshold limits for each sensor. Whenever the sense value is outside the set threshold limits, it is stored in the EEPROM.

# 1 Schematic circuit

Figure 1. Schematic circuit



AM10722-v1

## 2 Revision history

**Table 1. Document revision history**

Date	Revision	Changes
14-Nov-2011	1	Initial release.
15-Dec-2011	2	Minor text changes in cover page to improve readability.
12-Mar-2012	3	Modified: features.

**Please Read Carefully:**

Information in this document is provided solely in connection with ST products. STMicroelectronics NV and its subsidiaries ("ST") reserve the right to make changes, corrections, modifications or improvements, to this document, and the products and services described herein at any time, without notice.

All ST products are sold pursuant to ST's terms and conditions of sale.

Purchasers are solely responsible for the choice, selection and use of the ST products and services described herein, and ST assumes no liability whatsoever relating to the choice, selection or use of the ST products and services described herein.

No license, express or implied, by estoppel or otherwise, to any intellectual property rights is granted under this document. If any part of this document refers to any third party products or services it shall not be deemed a license grant by ST for the use of such third party products or services, or any intellectual property contained therein or considered as a warranty covering the use in any manner whatsoever of such third party products or services or any intellectual property contained therein.

**UNLESS OTHERWISE SET FORTH IN ST'S TERMS AND CONDITIONS OF SALE ST DISCLAIMS ANY EXPRESS OR IMPLIED WARRANTY WITH RESPECT TO THE USE AND/OR SALE OF ST PRODUCTS INCLUDING WITHOUT LIMITATION IMPLIED WARRANTIES OF MERCHANTABILITY, FITNESS FOR A PARTICULAR PURPOSE (AND THEIR EQUIVALENTS UNDER THE LAWS OF ANY JURISDICTION), OR INFRINGEMENT OF ANY PATENT, COPYRIGHT OR OTHER INTELLECTUAL PROPERTY RIGHT.**

**UNLESS EXPRESSLY APPROVED IN WRITING BY TWO AUTHORIZED ST REPRESENTATIVES, ST PRODUCTS ARE NOT RECOMMENDED, AUTHORIZED OR WARRANTED FOR USE IN MILITARY, AIR CRAFT, SPACE, LIFE SAVING, OR LIFE SUSTAINING APPLICATIONS, NOR IN PRODUCTS OR SYSTEMS WHERE FAILURE OR MALFUNCTION MAY RESULT IN PERSONAL INJURY, DEATH, OR SEVERE PROPERTY OR ENVIRONMENTAL DAMAGE. ST PRODUCTS WHICH ARE NOT SPECIFIED AS "AUTOMOTIVE GRADE" MAY ONLY BE USED IN AUTOMOTIVE APPLICATIONS AT USER'S OWN RISK.**

Resale of ST products with provisions different from the statements and/or technical features set forth in this document shall immediately void any warranty granted by ST for the ST product or service described herein and shall not create or extend in any manner whatsoever, any liability of ST.

ST and the ST logo are trademarks or registered trademarks of ST in various countries.

Information in this document supersedes and replaces all information previously supplied.

The ST logo is a registered trademark of STMicroelectronics. All other names are the property of their respective owners.

© 2012 STMicroelectronics - All rights reserved

STMicroelectronics group of companies

Australia - Belgium - Brazil - Canada - China - Czech Republic - Finland - France - Germany - Hong Kong - India - Israel - Italy - Japan - Malaysia - Malta - Morocco - Philippines - Singapore - Spain - Sweden - Switzerland - United Kingdom - United States of America

[www.st.com](http://www.st.com)