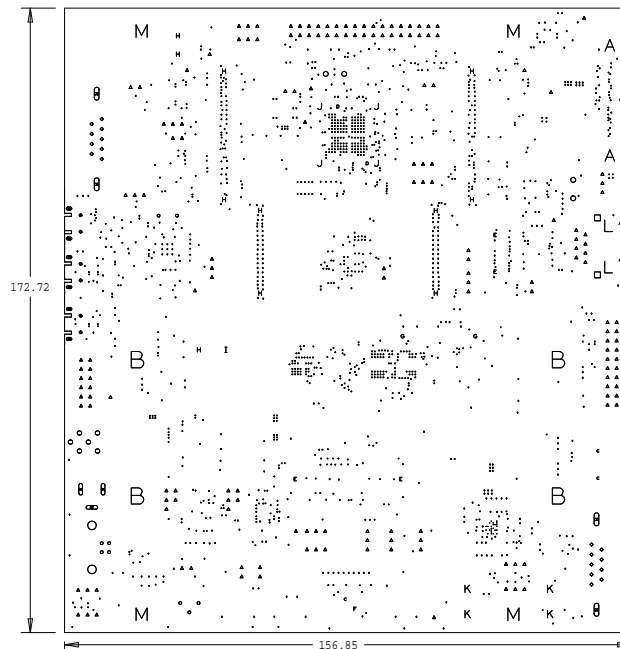


REVISIONS			
REV	DESCRIPTION	DATE	APPROVED
1.0	EDITION ORIGINALE	2008-**-**	***

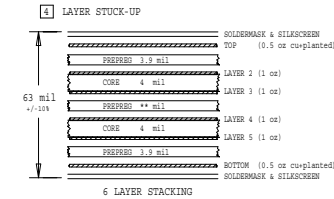
5 IMPEDANCE TABLE

LAYER	TRACE (mil)	SPACING (mil)	IMPEDANCE (single end)	IMPEDANCE (differential)	TOLERANCE
1,6	5.0	N/A	55 OHM	N/A	+/-10%
3	4.0				
1	5.1	9.9	N/A	100 OHM	+/-10%
3	4.1	10.9			
1	6.1	8.9			
3	5.1	9.9	N/A	90 OHM	+/-10%



DRILL CHART: TOP TO BOTTOM					
ALL UNITS ARE IN MILS					
FIGURE	SIZE	TOLERANCE	PLATED	ROTATION	QT.
•	6.0	+3.0/-3.0	PLATED	-	24
•	8.0	+3.0/-3.0	PLATED	-	29
•	10.0	+3.0/-3.0	PLATED	-	77
•	12.0	+3.0/-3.0	PLATED	-	60
◦	30.0	+3.0/-3.0	PLATED	-	9
◦	36.0	+3.0/-3.0	PLATED	-	10
▲	40.0	+3.0/-3.0	PLATED	-	17
○	48.0	+3.0/-3.0	PLATED	-	6
○	53.0	+3.0/-3.0	PLATED	-	4
□	64.0	+3.0/-3.0	PLATED	-	2
○	95.0	+3.0/-3.0	PLATED	-	2
A	126.0	+3.0/-3.0	PLATED	-	2
B	177.0	+3.0/-3.0	PLATED	-	4
◐	28.0	+2.0/-2.0	NON-PLATED	-	3
◐	33.46	+2.0/-2.0	NON-PLATED	-	2
◐	38.0	+2.0/-2.0	NON-PLATED	-	4
f	39.0	+2.0/-2.0	NON-PLATED	-	1
◐	40.0	+2.0/-2.0	NON-PLATED	-	2
H	47.0	+2.0/-2.0	NON-PLATED	-	1
I	58.0	+2.0/-2.0	NON-PLATED	-	1
J	67.0	+2.0/-2.0	NON-PLATED	-	4
K	79.0	+2.0/-2.0	NON-PLATED	-	4
L	125.0	+2.0/-2.0	NON-PLATED	-	2
M	138.0	+2.0/-2.0	NON-PLATED	-	4
◐	33.0x30.0	+5.0/-5.0	PLATED	0.000	60
•	59.0x33.0	+5.0/-5.0	PLATED	0.000	60
◐	126.0x40.0	+5.0/-5.0	PLATED	90.000	2
◐	126.0x40.0	+5.0/-5.0	PLATED	0.000	1
◐	140.0x50.0	+5.0/-5.0	PLATED	90.000	2

TOTAL HOLES: 1933




PCB SPECIFICATIONS:

- |  |  |  |  |                                 |
|--|--|--|--|---------------------------------|
| A. MATERIAL;   | FR-4,  | <input checked="" type="checkbox"/> TG-170     | <input type="checkbox"/> TG-150                | <input type="checkbox"/> TG-140 |
| B. MATERIAL FAMILY;                                    | N/A,   |  |  |                                 |
| C. SOLDERMASK COLOR;                                   | <input type="checkbox"/> GREEN                                   | <input checked="" type="checkbox"/> BLUE       | <input type="checkbox"/> RED                   | <input type="checkbox"/> BLACK  |
| D. SILKSCREEN COLOR;                                   | <input checked="" type="checkbox"/> WHITE                        | <input type="checkbox"/> YELLOW                | <input type="checkbox"/> BLACK                 |                                 |
| E. SURFACE FINISH;                                     | <input checked="" type="checkbox"/> ENIG                         | <input type="checkbox"/> IMMERSION SILVER      | <input type="checkbox"/> IMMERSION TIN         |                                 |
|  | <input type="checkbox"/> HASL                                    | <input type="checkbox"/> HASL (PB-FREE)        | <input type="checkbox"/> GOLDEN FINGER         |                                 |
| <input checked="" type="checkbox"/> IMPEDANCE CONTROL; | <input type="checkbox"/> NO                                      | <input checked="" type="checkbox"/> YES        | (SEE IMPEDANCE TABLE FOR DETAIL INFORMATION)   |                                 |
| G. THROUGH VIA;  | PLUG THE VIAS WHICH ARE COVERED WITH SOLDERMASK ONE OR TWO SIDE. |  |  |                                 |
|  | PLUG MATERIAL:   | <input checked="" type="checkbox"/> SOLDERMASK | <input type="checkbox"/> NON-CONDUCTIVE EPOXY. |                                 |
| <input checked="" type="checkbox"/> STACK-UP;          | SEE LAYER STACK-UP SEQUENCE FOR OVERALL THICKNESS.               |  |  |                                 |

PCB REQUIREMENTS:

1. THIS BOARD WILL CONFORM TO:  
IPC-A-600. CURRENT REV., CLASS II  
IPC-6012, CURRENT REV., CLASS II
2. UNLESS OTHERWISE SPECIFIED ALL HOLE DIMENSIONS APPLY AFTER PLATING.  
ALL HOLES SHALL BE LOCATED WITHIN .003" DIAMETER OF TRUE POSITION.
3. PLAYED HOLE WALL THICKNESS SHALL NOT BE LESS THAN .001 INCH MINIMUM  
AVERAGE, WITH NO READING LESS THAN .0008 BY COROSS SECTION.
4. MATERIAL FR4 RATING 94V-0 MINIMUM EPOXY GLASS LAMINATE.  
BOARD SHALL BE LPI SOLDER MASKED OVER BARE COPPER BOTH SIDES PER  
IPC-SM-840 CLASS II.
6. SILKSCREEN SHALL BE PERMANENT NON-CONDUCTIVE INK AND WITH NO OVERLAP  
ON ANY COMPONENT PAD OR THROUGH HOLE.
7. MGFR, TO LEGIBLY ETCH OR STAMP/SCREEN WITH PERMANENT NON-CONDUCTIVE INK  
A. U.L. CODE                      D. MGFR. LOGO  
B. DATE CODE                    E. SUCCESSFUL ELECTRICAL BOARD TEST.  
C. FLAMMABILITY RATING
8. REMOVE THE FLASHS WHICH SMALLER THAN HOLE SIZE.
9. REMOVE ALL SHAPE EDGES AND BURRS .005 MAXIMUM.
10. PLEASE USE THE SUPPLIED IPC 356 NETLIST TO VERIFY BOARD BEFORE  
FABRICATING BOARD.

 <p>DESIGNED BY SOFER www.sofer.com.cn</p> <p>Tel : +86 21 - 6482 6908 Mail: design@sofer.com.cn</p>	LAYER: FAB DAWNING & DRILL LEGEND		COMPANY NAME: ST	
	DESIGNER: Shelley		PROJECT NAME: MB1165	
	DATE: 2015.05.27		PROJECT NUMBER: D031-01383	
				REV

UNLESS OTHERWISE SPECIFIED	SIGNATURES	DATE	LOGO		COMPANY NAME	
DIMENSIONS ARE IN INCHES	DRAWN	YY-MM-DD	TITLE PROJECT NAME *			
TOLERANCES ON;	CHECKED	YY-MM-DD				
2 PL DECIMALS +	ENGRG	YY-MM-DD				
3 PL DECIMALS +	ISSUED					
ANGLES +			SIZE B	DWG NO	*****	REV **
FRACTIONS +			SCALE 1:1		SHEET	1 OF 1