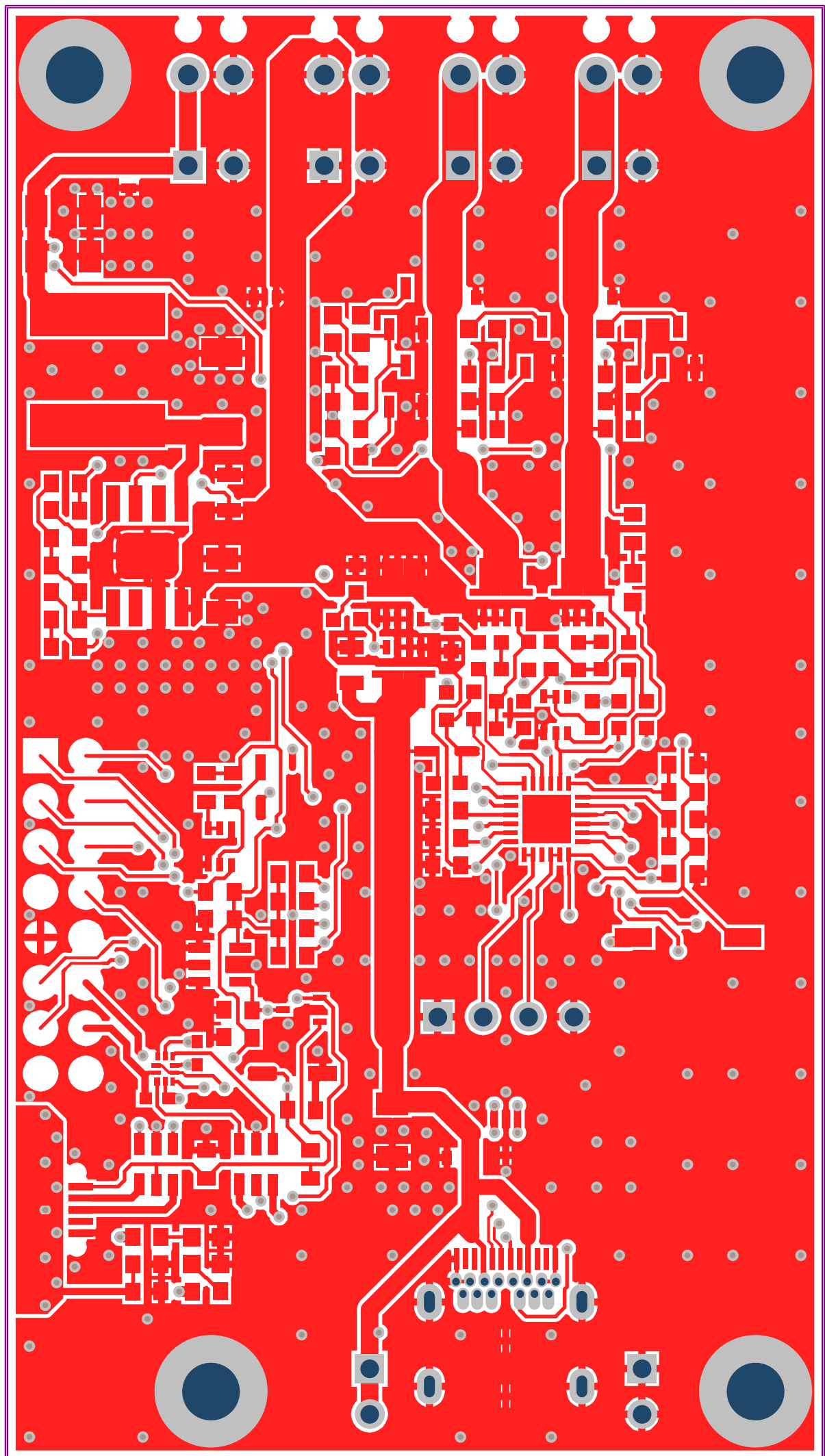
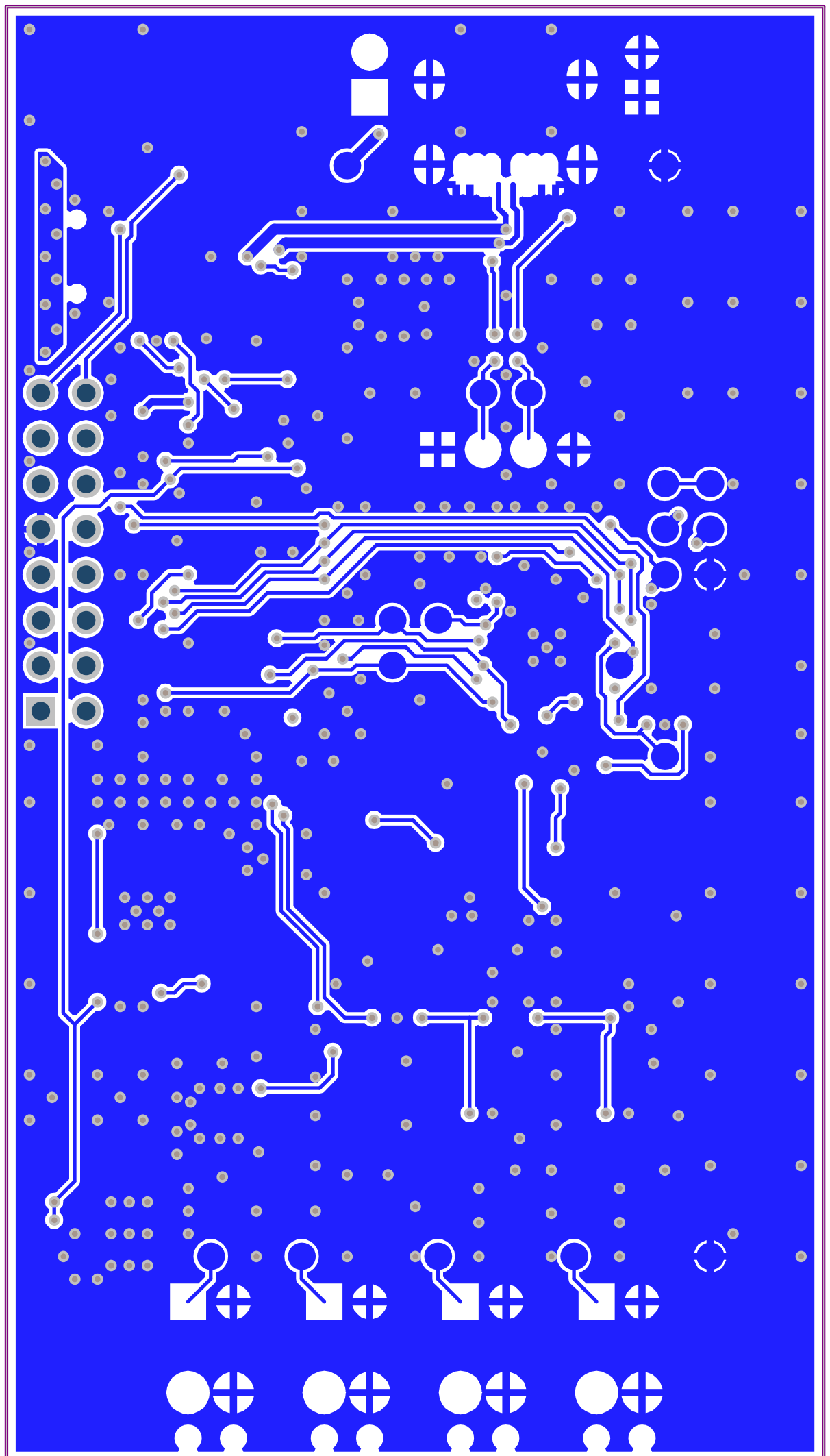
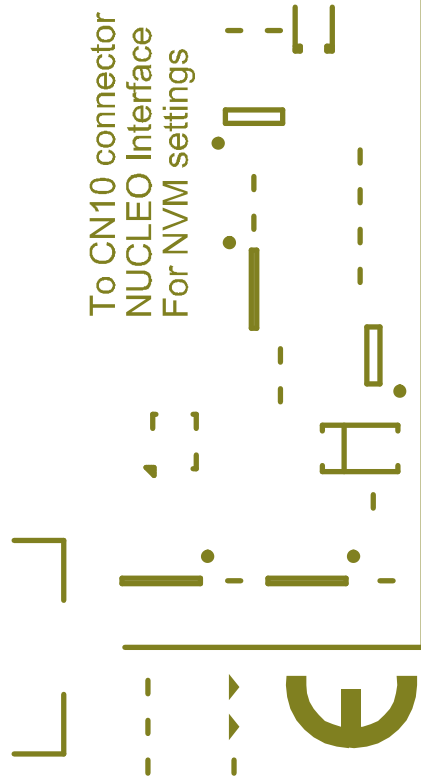


45.7

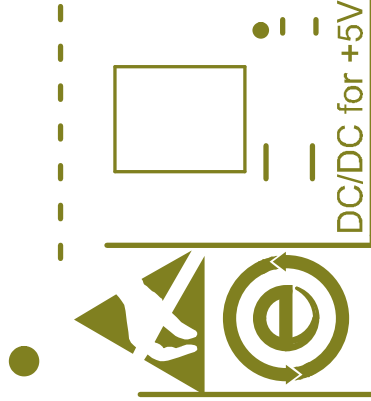
81.3



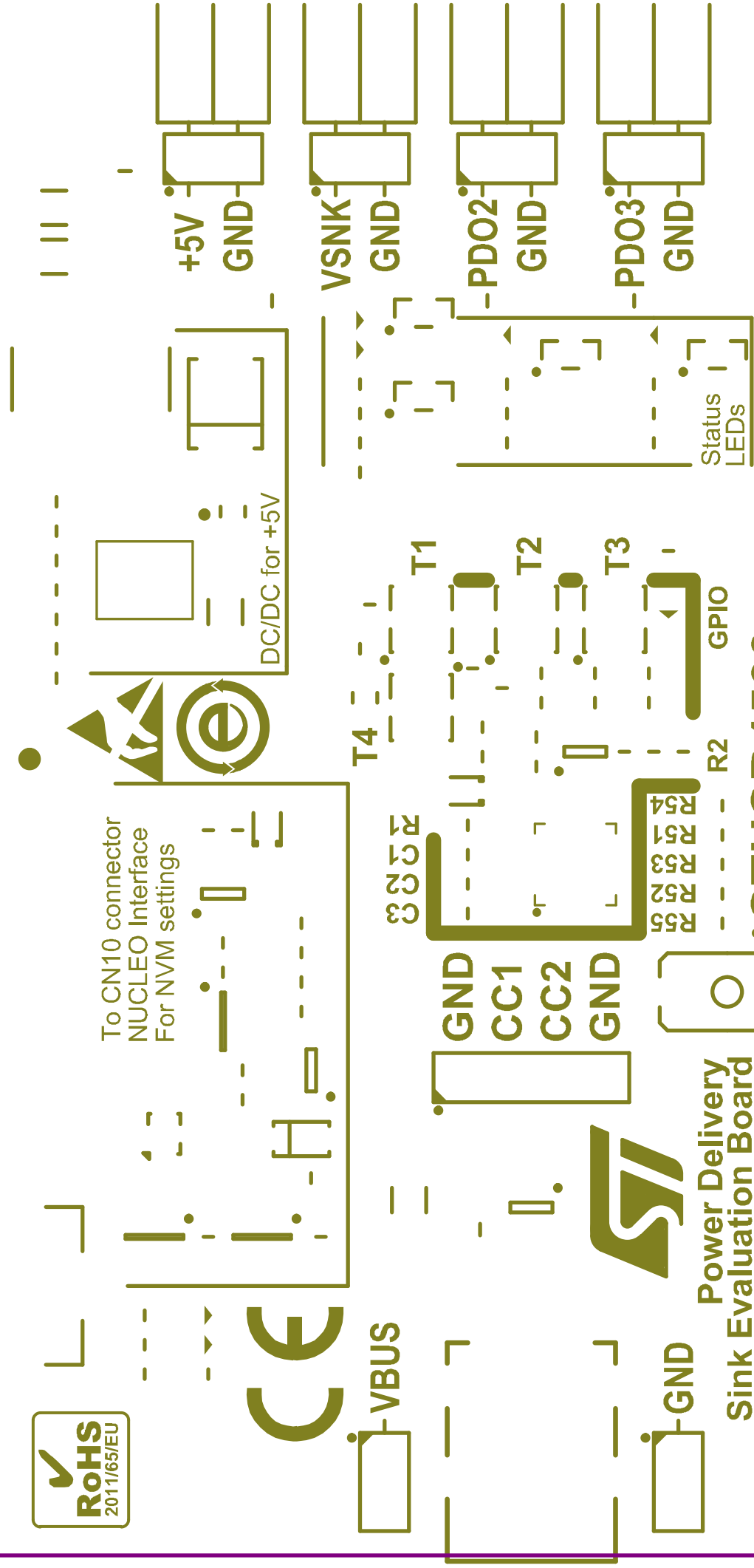




To CN10 connector  
NUCLEO Interface  
For NVM settings



DC/DC for +5V



For evaluation purpose only;  
not FCC approved for resale

**STUSB4500**  
Stand-alone USB PD SINK controller  
(with integrated discharge path)

**STEVAL-ISC005V1**

**Power Delivery  
Sink Evaluation Board**

--	--

