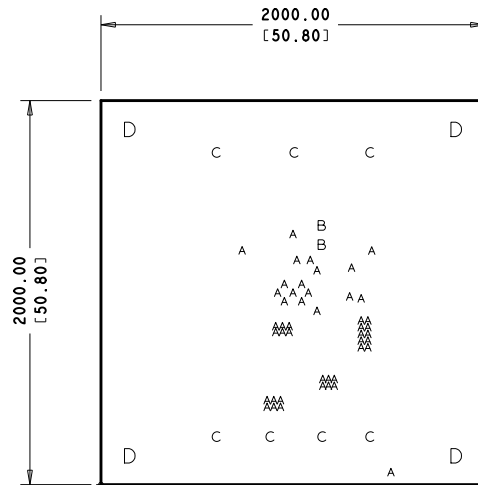


REVISION DATE								
		Description A698x / A698xF PIANO DI MONTAGGIO TOP E BOTTOM					Symbol A698x / A698xF	
							Group	
AUTOMATION DEPT. AGRATE B. ITALY		TOLERANCE UNLESS NOTED UNIT=MM					ISO	SCALE:
ALL RIGHTS STRICTLY RESERVED. REPRODUCTION OR ISSUE TO THIRD PARTIES IN ANY FORM WHATEVER IS NOT PERMITTED WITHOUT WRITTEN AUTHORIZATION FROM STMicroelectronics.		linear	0 <10	>10 <50	>50 <200	>200	ANG. LES.	REV. 0.0
		midle	±0.1	±0.2	±0.3	±0.5	±1°	Material
Drawn IFARCAD DP	date 11/07/13	accurate	±0.05	±0.1	±0.15	±0.25	±30°	Treatment and surface finishing
Approved	date							

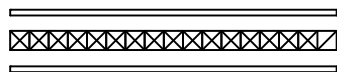


LATO TOP

FABRICATION NOTE:

- 1:FABRICATE USING LATEST REVISION OF IPC-6012A CLASS 2 OR ABOVE
- 2:FABRICATE USING MASTER ARTWORK A698x/A698xFR0 FOR CIRCUIT PATTERN
NO DEVIATION FROM MASTER ARTWORK ARE PERMITTED WITHOUT WRITTEN
APPROVAL FROM AN AUTHORIZED IFARCAD Snc REPRESENTATIVE
- 3:VENDOR MUST BE UL QUALIFIED AND BOARDS MUST BE IDENTIFIED WITH
APPROPRIATE VENDOR UL IDENTIFICATION MARK, LOT OR JOB NUMER AND
PCB MATERIAL FLAMMABILITY RATING (94V-0) MINIMUM
- 4:MATERIAL: FR4 RoHS COMPLIANT MINIMUM 125 C
SEE "DETAIL 'A'" FOR BOARD THICKNESS, COPPER WEIGHT AND LAYER CONSTRUCTION
- 5:SOLDER MASK BOTH SIDE OF BOARD WITH LIQUID PHOTO IMAGEABLE SOLDERMASK
- 6:FINISH: HASL RoHS6 COMPLIANT
- 7:FOR SMT COMPONENTS WITH PIN PITCH OF 0.019 INCH OR MORE NO GANG RELIEF
OF SOLDER MASK IS ALLOWED
- 8:SILKSCREEN TO BE WHITE, NON CONDUCTIVE, EPOXY INK OR EQUIVALENT
- 9:THIS IS NOT A CONTROLLED IMPEDANCE BOARD
- 10:DESIGNATED AREA OR INSPECTION AND TEST STAMP
- 11:ON PCB MUST BE IDENTIFIED MANUFACTURER LOGO AND PCB TYPE
(MEANS OF MATERIAL TYPE INDICATED ON THE YELLOW CARD DOCUMENT)
- 12:VENDOR TO PROVIDE BOARD STACK-UP FOR IMPEDANCE APPROVAL PRIOR TO BOARD
FABBRICATION,STACK UP AND IMPEDANCE TO INCLUDE COPPER PLATING ON
OUTER LAYERS.FAB DRAWING STACK-UP DIMENSION ARE PROVIDED FOR REFERENCE ONLY
VENDOR TO PROVIDE BOARD FOR IMPEDANCE TEST RESULTS AND COUPON
- 13:TEARDROPPING OF VIAS AND PADS ALLOWED AT PAD TO TRACE INTERSECTION
TO INSURE A 2MIL ANULAR RING AT THE JUNCTION
- 14:REMOVE SILKSCREEN FROM SOLDERABLE SURFACE
- 15:ALL BOARD TO BE 100% ELECTRICALLY NETLIST TESTED FOR OPENS ANDION
SHORTS. APPLY TEST STAMP IN REFERENCED AREA
- 16:THIS BOARD SHALL BE FULLY COMPLIANT WITH UL796

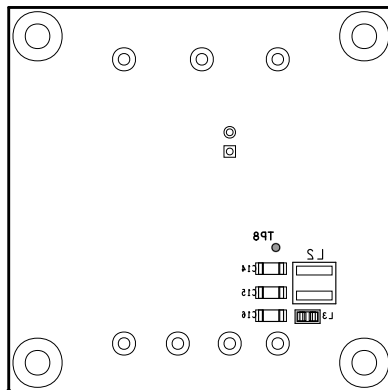
Finished Hole Tolerance - All units are in Inches -		
Finish Hole Diameter	Plated Through Finish Hole Diameter	Non Plated Through Finish Hole Diameter
0.008"-0.013"	+0.002/-FHS"	+/-0.002"
0.014"-0.063"	+/-0.003"	+/-0.002"
0.064"-0.156"	+/-0.004"	+/-0.003"
0.157"-0.250"	+/-0.007"	+/-0.004"
0.251" and up	+/-0.007"	+/-0.005"
0.125"	Non Plated Only	+0.003/-0.000"

DETAIL 'A'LAYER BUILD UP
(reference only)Cu FOIL - 70u
CORE - 1600u
Cu FOIL - 70u(external Cu th are after plating)
estimated total thickness 1600u

DRILL CHART: TOP to BOTTOM			
ALL UNITS ARE IN MILS			
FIGURE	SIZE	PLATED	QTY
A	13.0	PLATED	46
B	35.0	PLATED	2
C	60.0	PLATED	7
D	128.0	PLATED	4

REVISION DATE

		Description A698x / A698xF FABRICATION DRAWING						Symbol A698x / A698xF			
								Group			
AUTOMATION DEPT. AGRATE B. ITALY		TOLERANCE UNLESS NOTED UNIT=MM						ISO		SCALE:	REV. 0.0
ALL RIGHTS STRICTLY RESERVED. REPRODUCTION OR ISSUE TO THIRD PARTIES IN ANY FORM WHATEVER IS NOT PERMITTED WITHOUT WRITTEN AUTHORIZATION FROM STMicroelectronics.								linear		0 <10	>10 <50
		midle	±0.1	±0.2	±0.3	±0.5	±1°	Treatment and surface finishing			
		Drawn IFARCAD DP	date 11/07/13	accurate	±0.05	±0.1	±0.15	±0.25	±30°		
Approved		date									



IFARCAD

CODICE PRODOTTO		A698x / A698xF			
CLIENTE		STM - LISSONI			
DESCRIZIONE VISTA					
DATA	11-07-2013	REVISIONE	0.0	DISEGNATORE	D.PANZERI
RISERVATO - CONFIDENZIALE Questo documento e' di proprieta della societa' IFARCAD e del CLIENTE FINALE che se ne riservano tutti i diritti Eventuali divulgazioni non autorizzate a terze parti saranno perseguite nei termini di legge.					