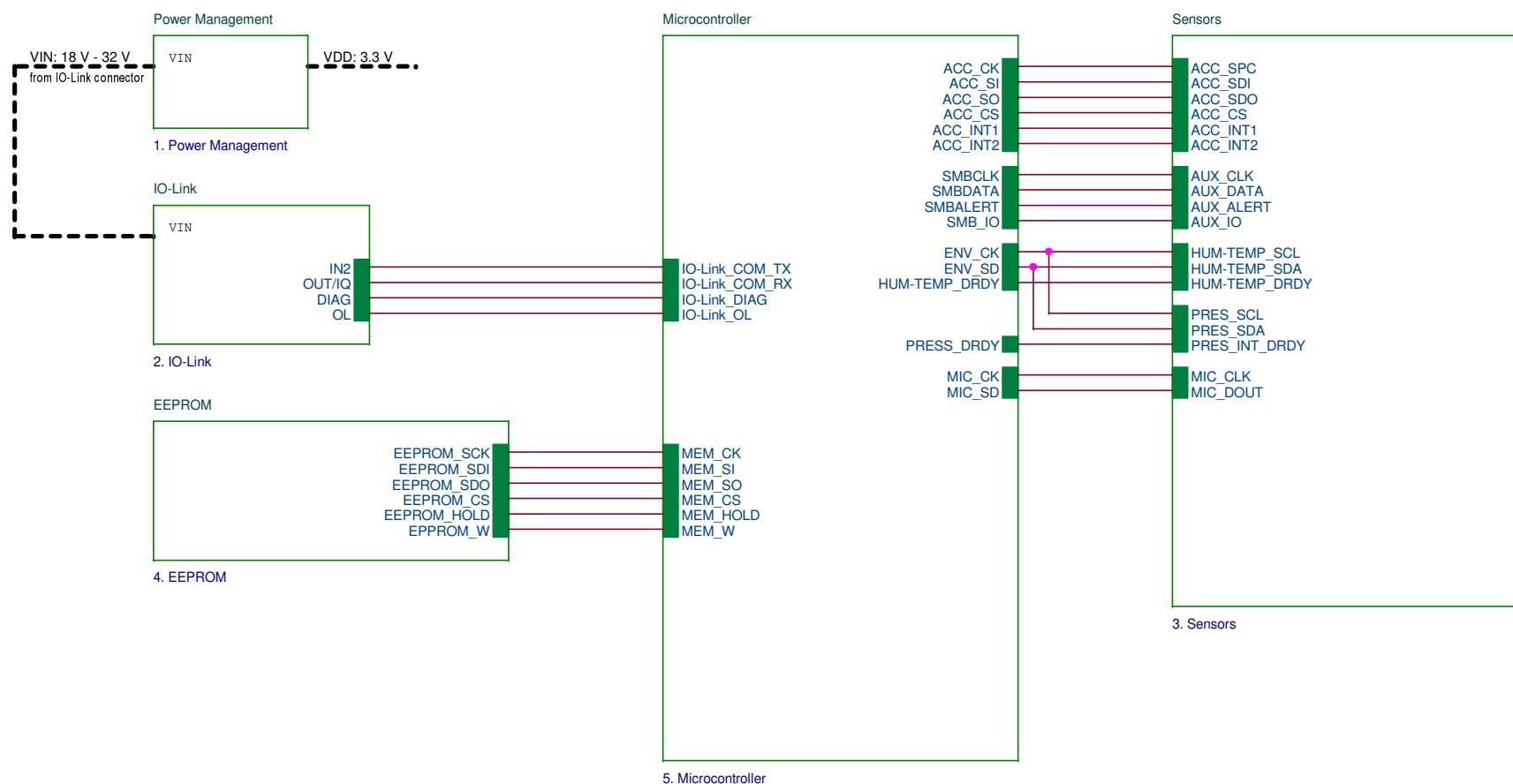


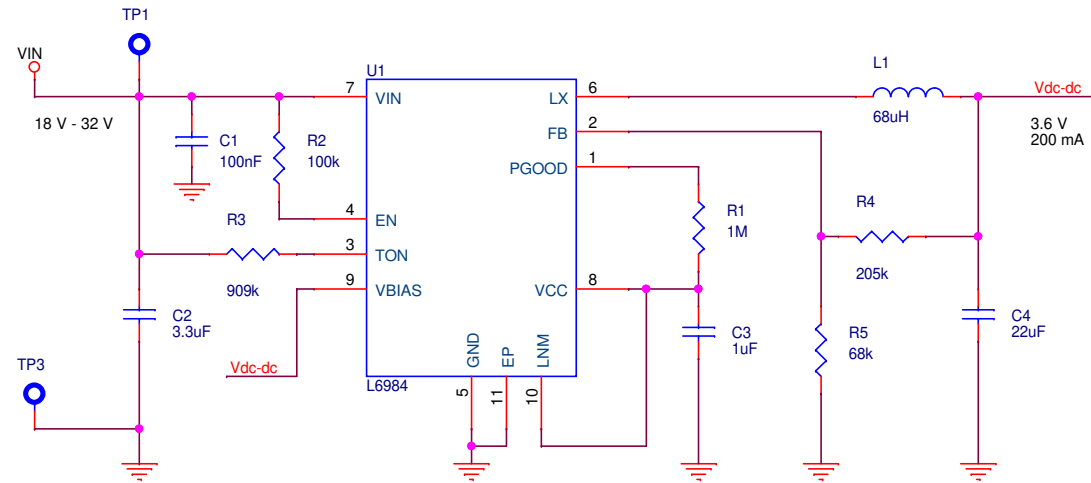
General Purpose Industrial Sensor



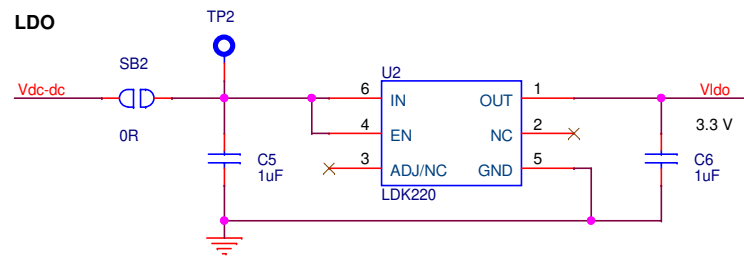
Board Title STEVAL-IDP005V1			
Sheet Title Main Page			
Doc No 1	Date Wednesday, June 13, 2018	Rev 5	Sheet 1 / 7

Power Management

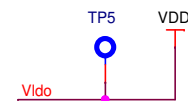
step-down switching regulator




LDO

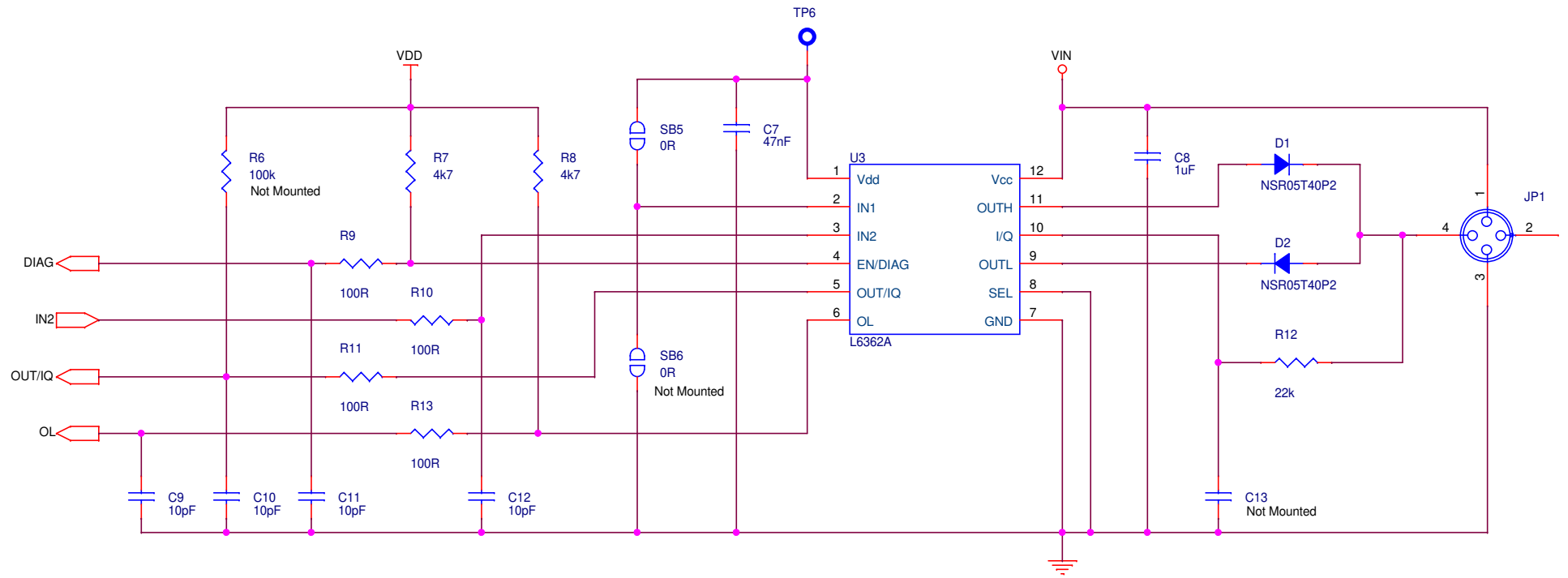


VDD



		Board Title STEVAL-IDP005V1	
		Sheet Title Power Management	
1	Doc No	Date Wednesday, June 13, 2018	Rev 5
2	Sheet / 7		

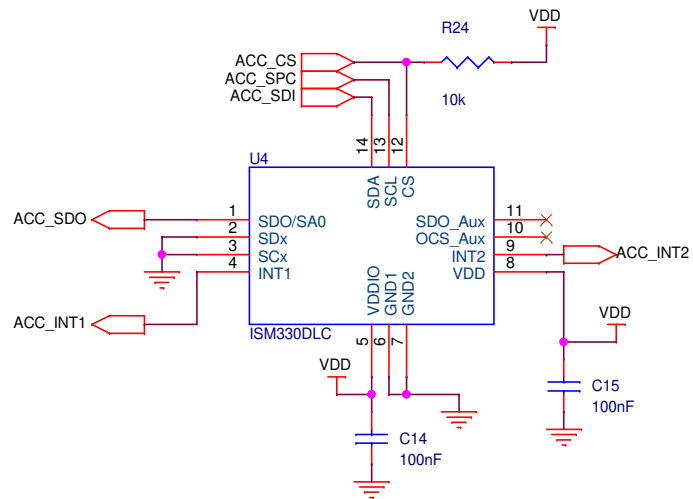
IO-Link



Board Title STEVAL-IDP005V1			
Sheet Title IO-Link			
Doc No	Date	Rev	Sheet
1	Wednesday, June 13, 2018	5	3 / 7

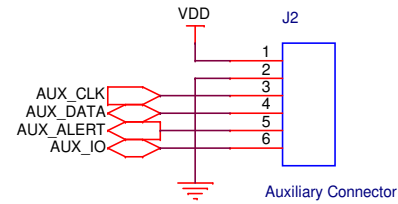
Sensors

3D accelerometer



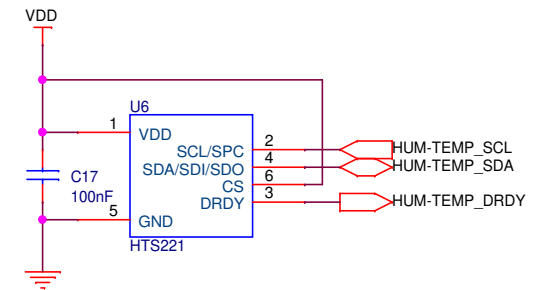
SPI

Auxiliary SMBus



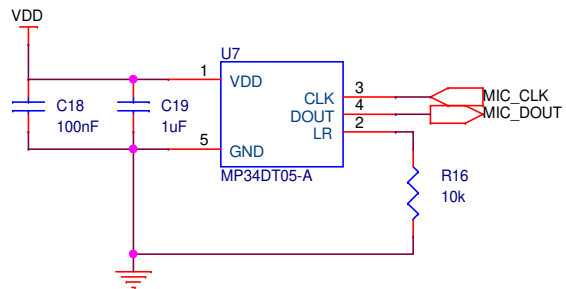
SMBus

Humidity and Temperature Sensor



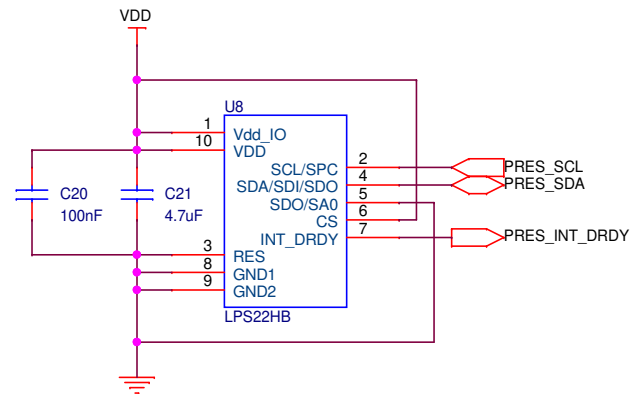
I²C

MEMS microphone



I²S

MEMS Pressure Sensor



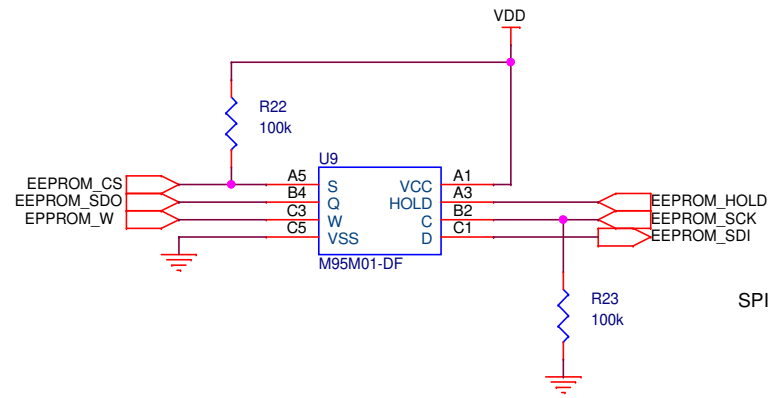
I²C



Board Title STEVAL-IDP005V1			
Sheet Title Sensors			
Doc No	Date	Rev	Sheet
1	Wednesday, June 13, 2018	5	4 / 7

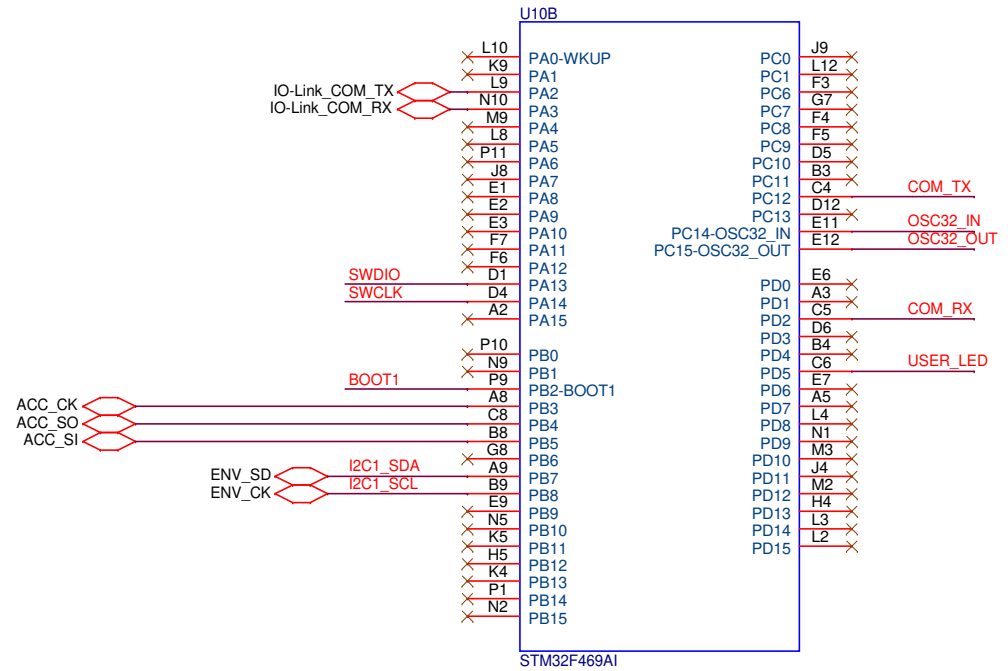
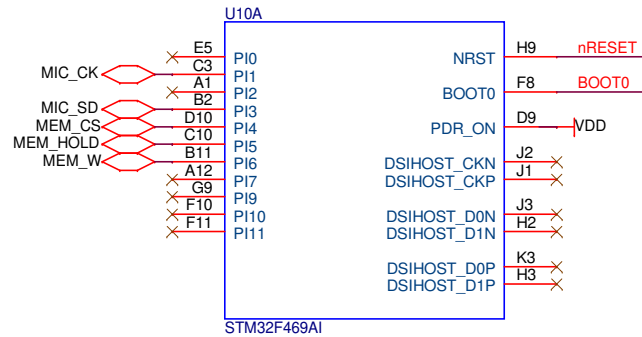
Electrically Erasable PROgrammable Memory

1-Mbit SPI bus EEPROM with high-speed clock

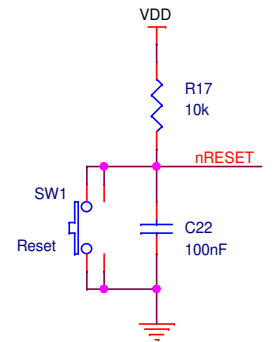
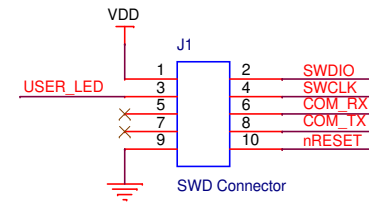
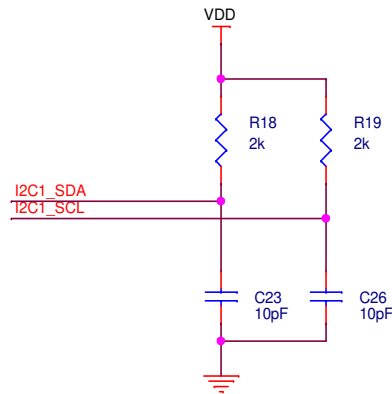
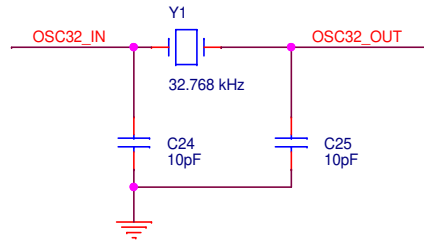
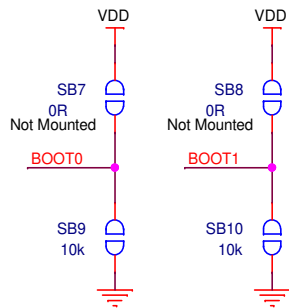



Board Title STEVAL-IDP005V1			
Sheet Title EEPROM			
1	Doc No	Date Wednesday, June 13, 2018	Rev 5
5	Sheet	5	7

Microcontroller (Part A)

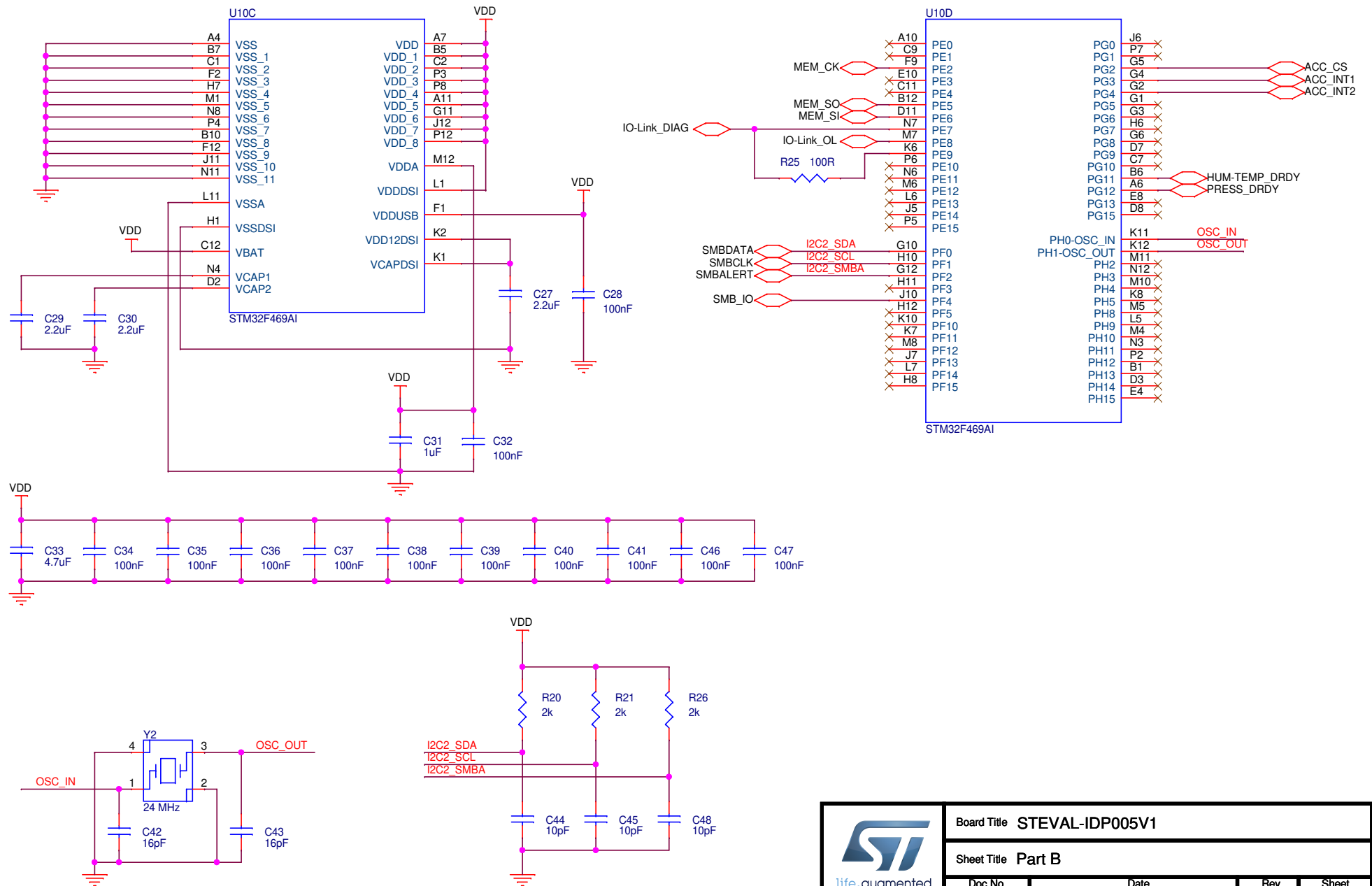



Take care about the MCU boot configuration table



	Board Title STEVAL-IDP005V1				
	Sheet Title Part A				
Doc No	1	Date	Wednesday, June 13, 2018	Rev	5
Sheet	6				7

Microcontroller (Part B)



		Board Title STEVAL-IDP005V1		
		Sheet Title Part B		
Doc No	1	Date	Wednesday, June 13, 2018	Rev
				5
				7
				Sheet
				7