
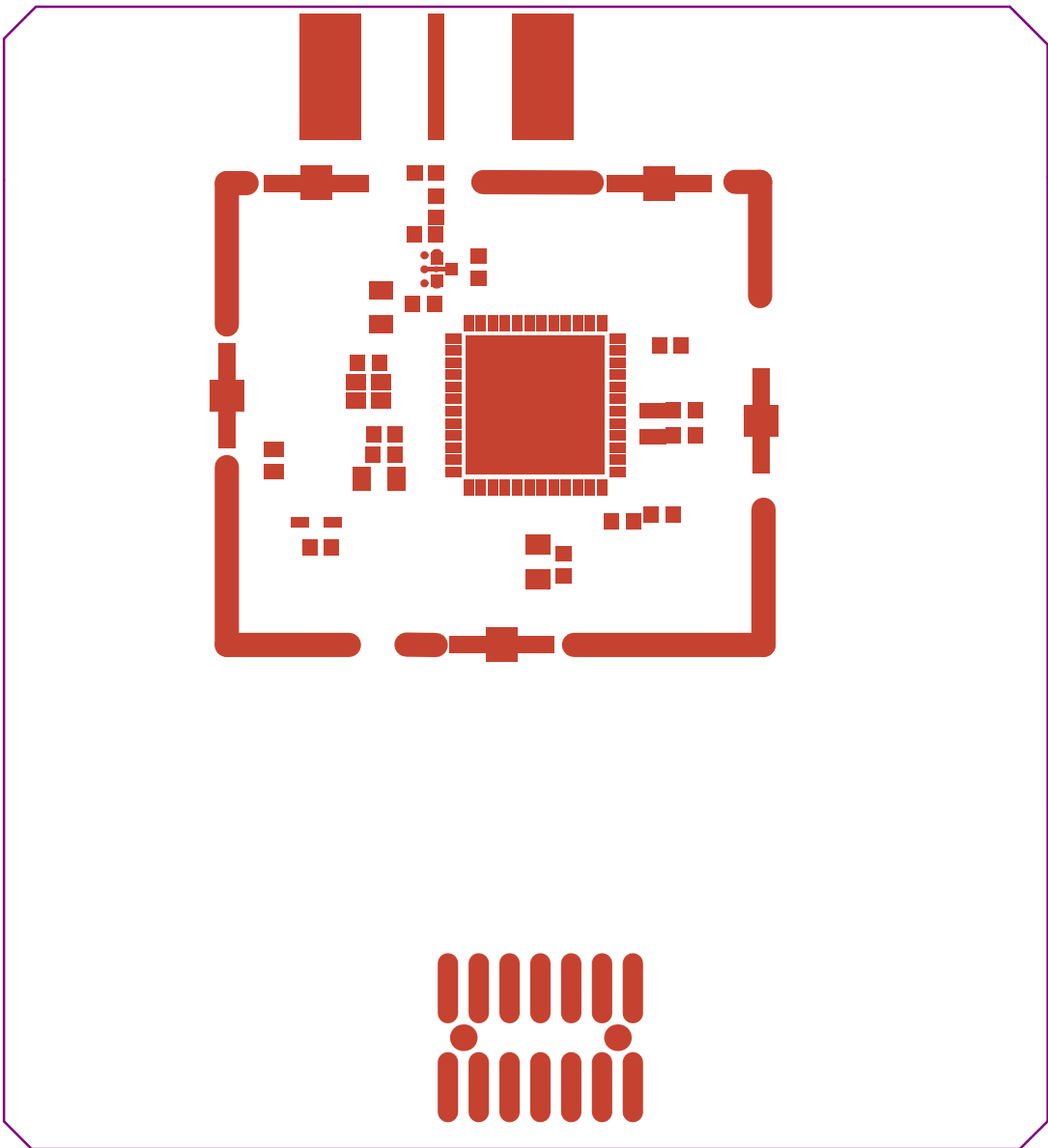

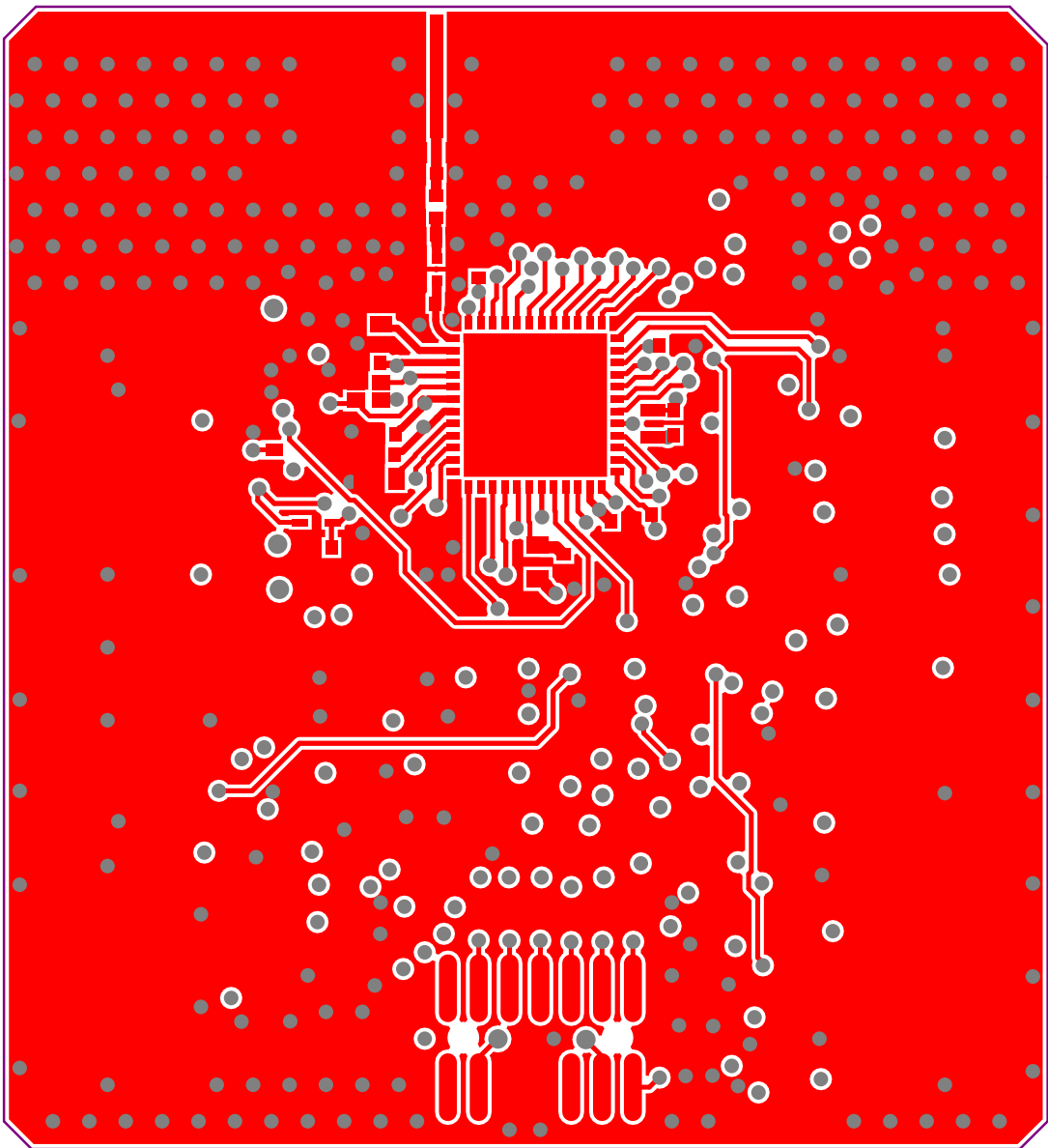



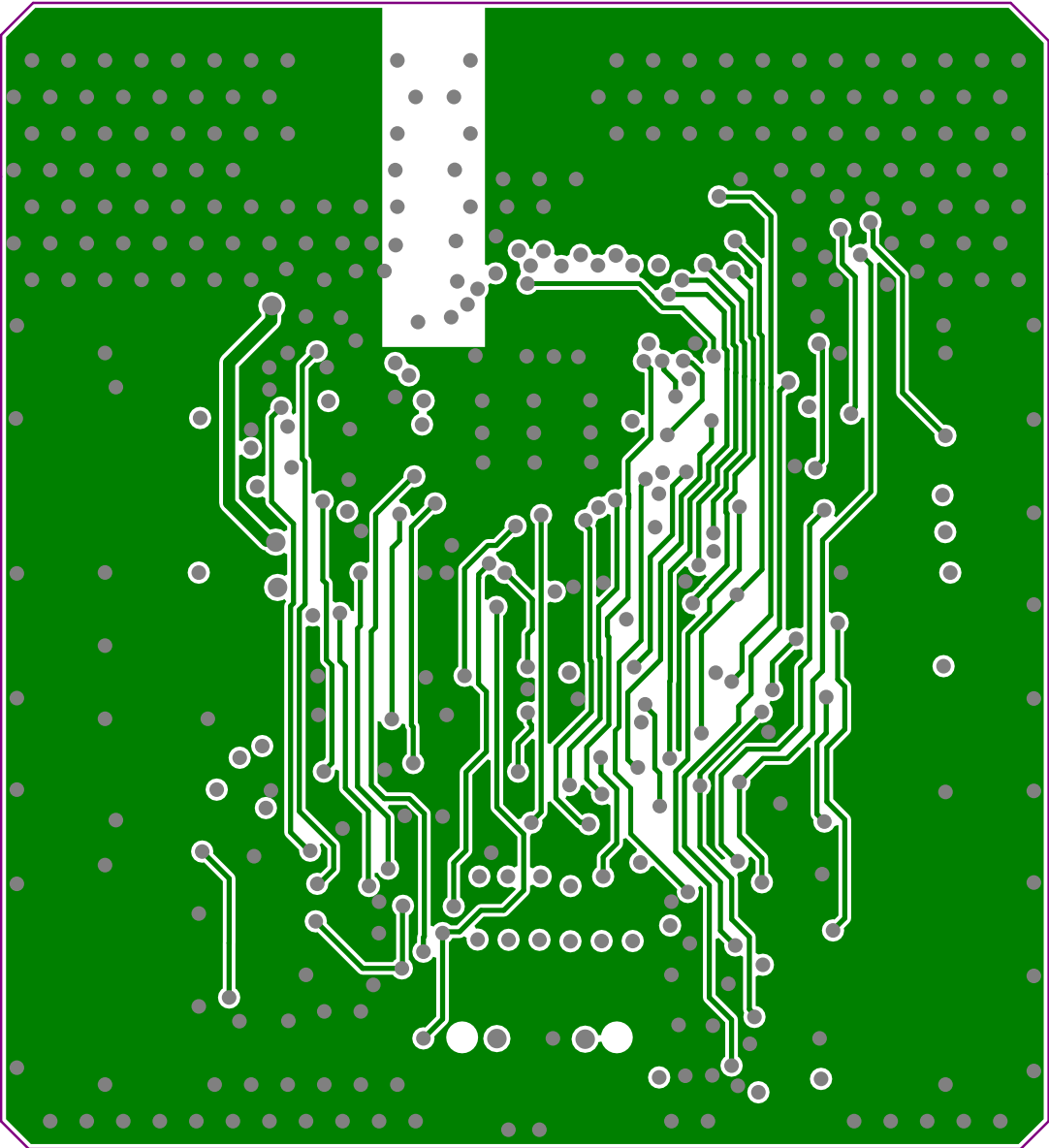
Project: MiniBoard_WBA6x_QFN48_LDO_USB_SMA		
Layer: Top Overlay	Gerber: .GTO	
Variant: [No Variations]	Ref: MB2296	
Date: 23-07-2024	Rev: A	




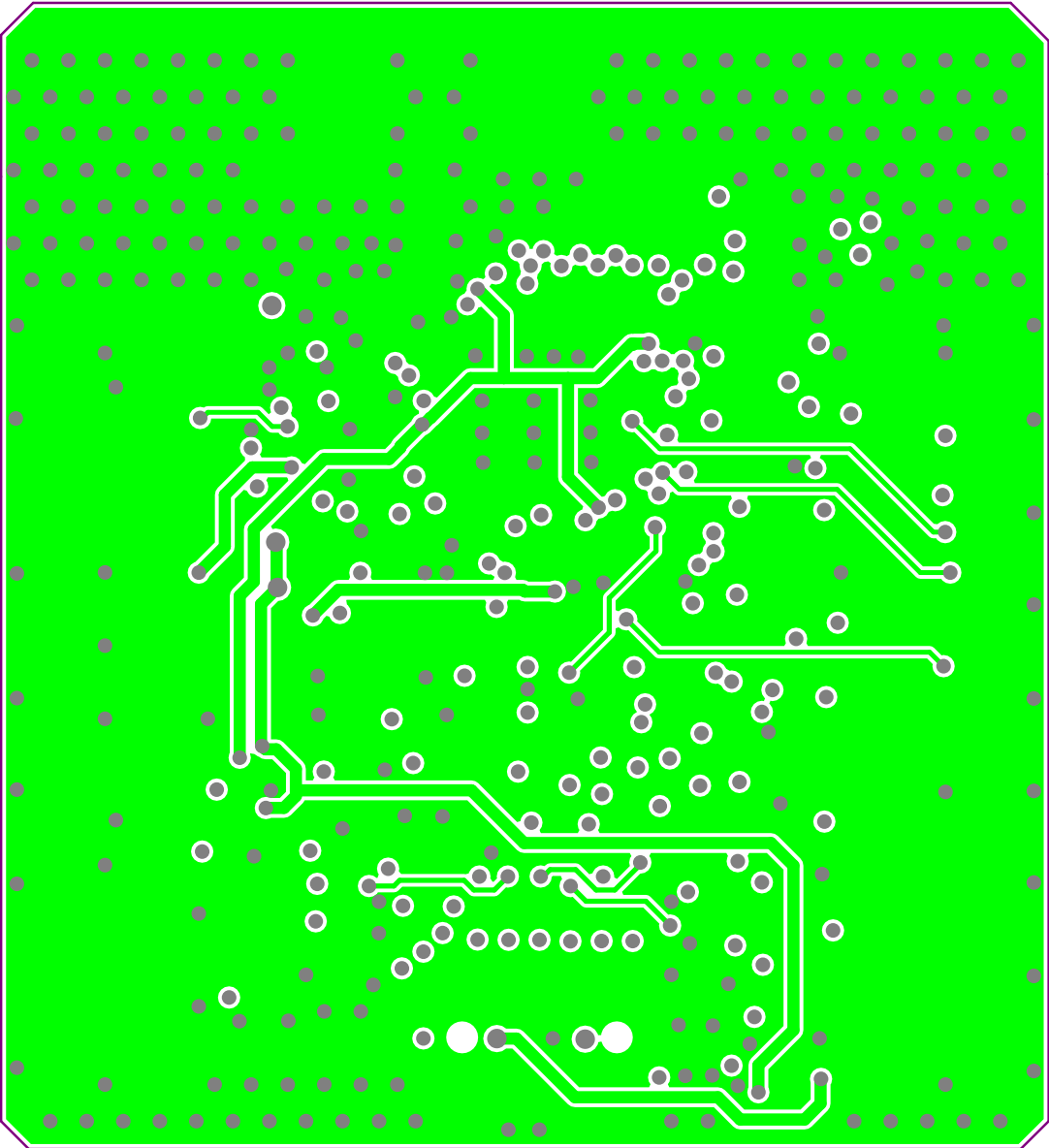
Project: MiniBoard_WBA6x_QFN48_LDO_USB_SMA		
Layer: <b>Top Solder</b>	Gerber: <b>.GTS</b>	
Variant: [No Variations]	Ref: MB2296	
Date: 23-07-2024	Rev: A	




Project: MiniBoard_WBA6x_QFN48_LDO_USB_SMA		
Layer: <b>Top Layer</b>	Gerber: <b>.GTL</b>	
Variant: [No Variations]	Ref: MB2296	
Date: 23-07-2024	Rev: A	



Project: MiniBoard_WBA6x_QFN48_LDO_USB_SMA		
Layer: Internal 1	Gerber: .G1	
Variant: [No Variations]	Ref: MB2296	
Date: 23-07-2024	Rev: A	



Project: MiniBoard_WBA6x_QFN48_LDO_USB_SMA		
Layer: Internal 2	Gerber: .G2	
Variant: [No Variations]	Ref: MB2296	
Date: 23-07-2024	Rev: A	

# Gerber File List

Project: MiniBoard\_WBA6x\_QFN48\_LDO\_USB\_SMA

Layer: Bottom Layer

Variant: [No Variations]

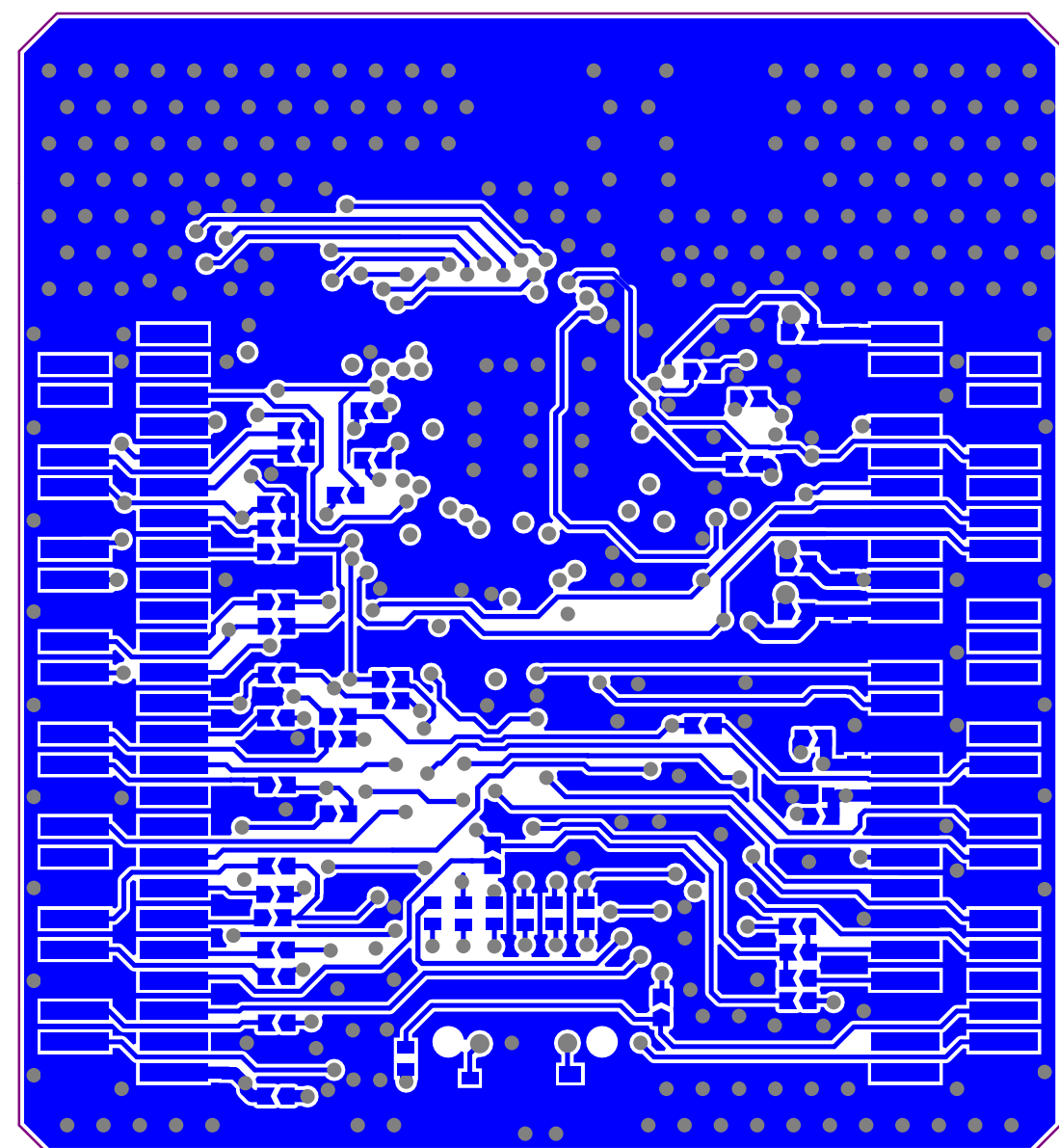
Date: 23-07-2024


Rev: A

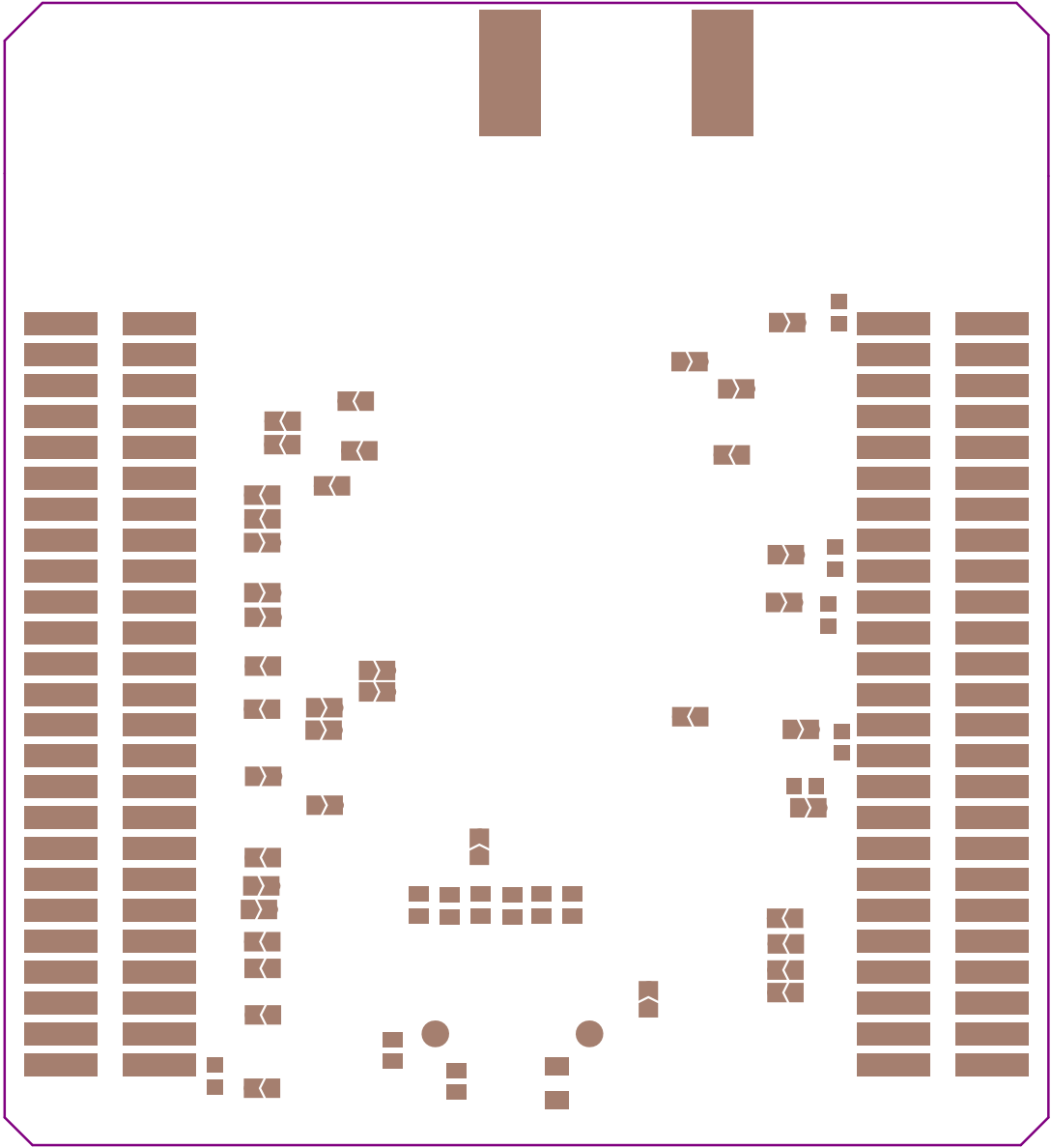
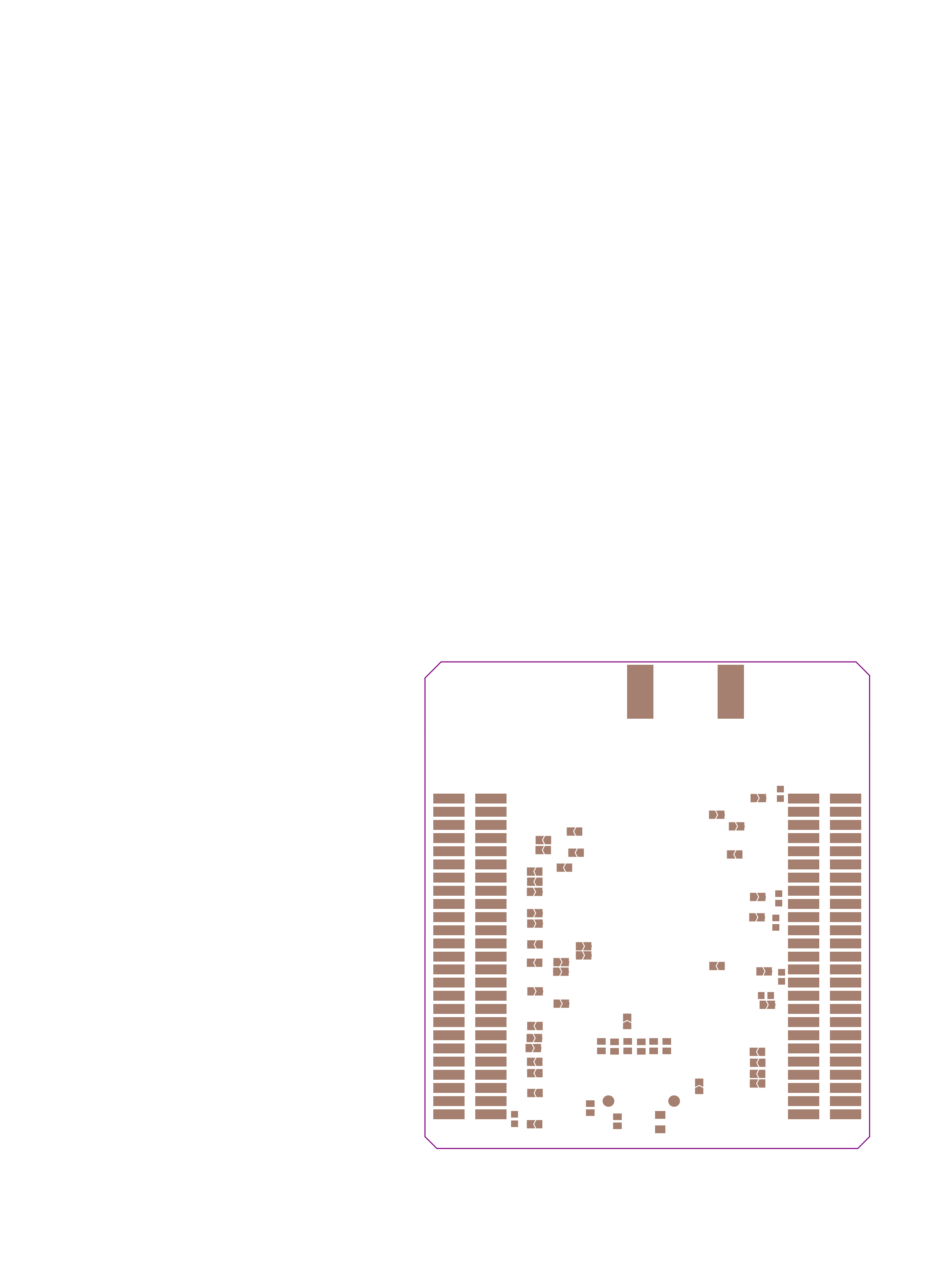
Gerber: .GBL


Ref: MB2296

Rev: A

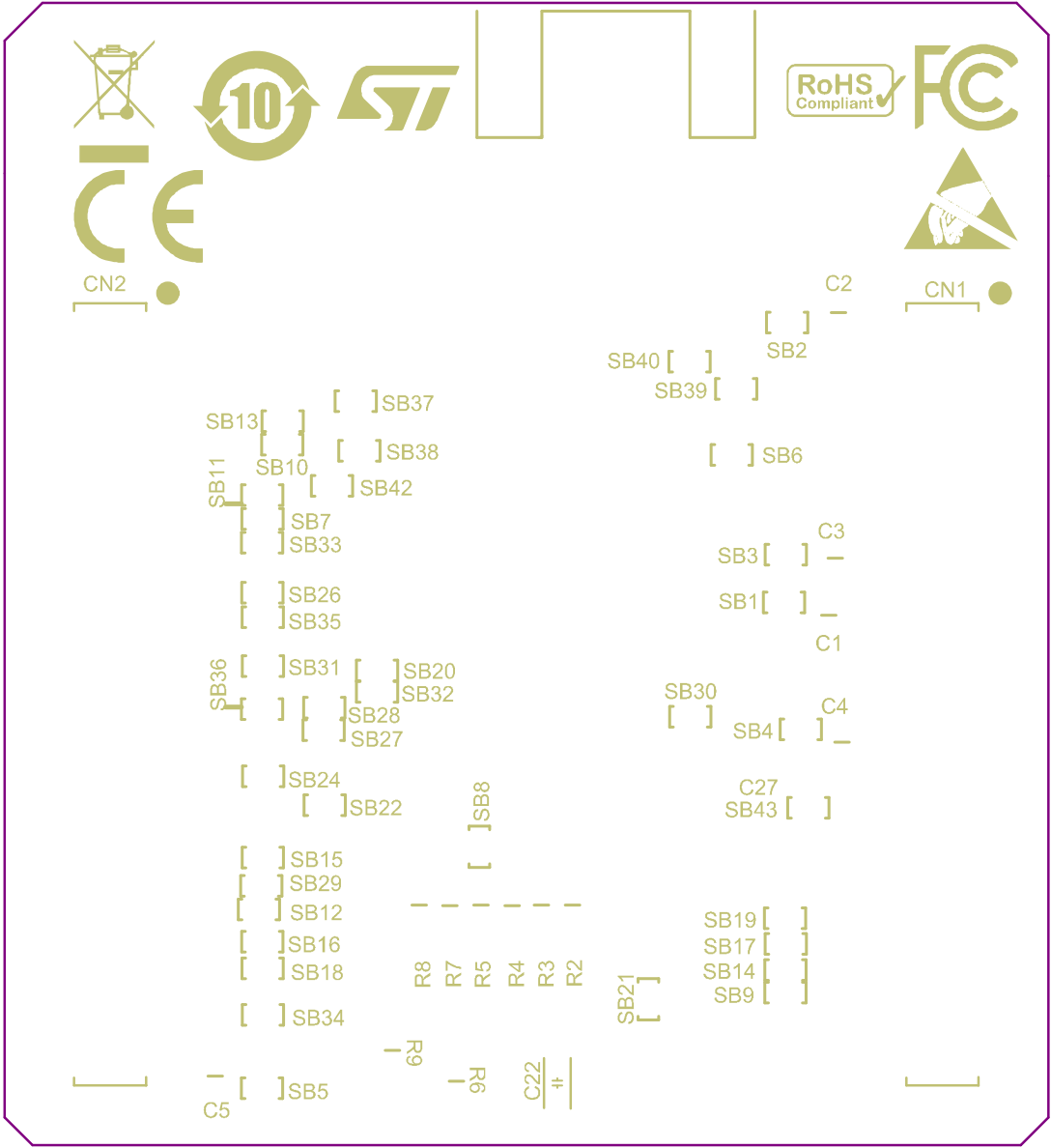


Project: MiniBoard_WBA6x_QFN48_LDO_USB_SMA		
Layer: Bottom Layer	Gerber: .GBL	
Variant: [No Variations]	Ref: MB2296	
Date: 23-07-2024	Rev: A	



Project: MiniBoard_WBA6x_QFN48_LDO_USB_\$MA		
Layer: Bottom Solder	Gerber:.GBS	
Variant: [No Variations]	Ref: MB2296	
Date: 23-07-2024	Rev: A	





Project: MiniBoard\_WBA6x\_QFN48\_LDO\_USB\_SMA

Layer: Bottom Overlay

Gerber:.GBO

Variant: [No Variations]

Ref: MB2296

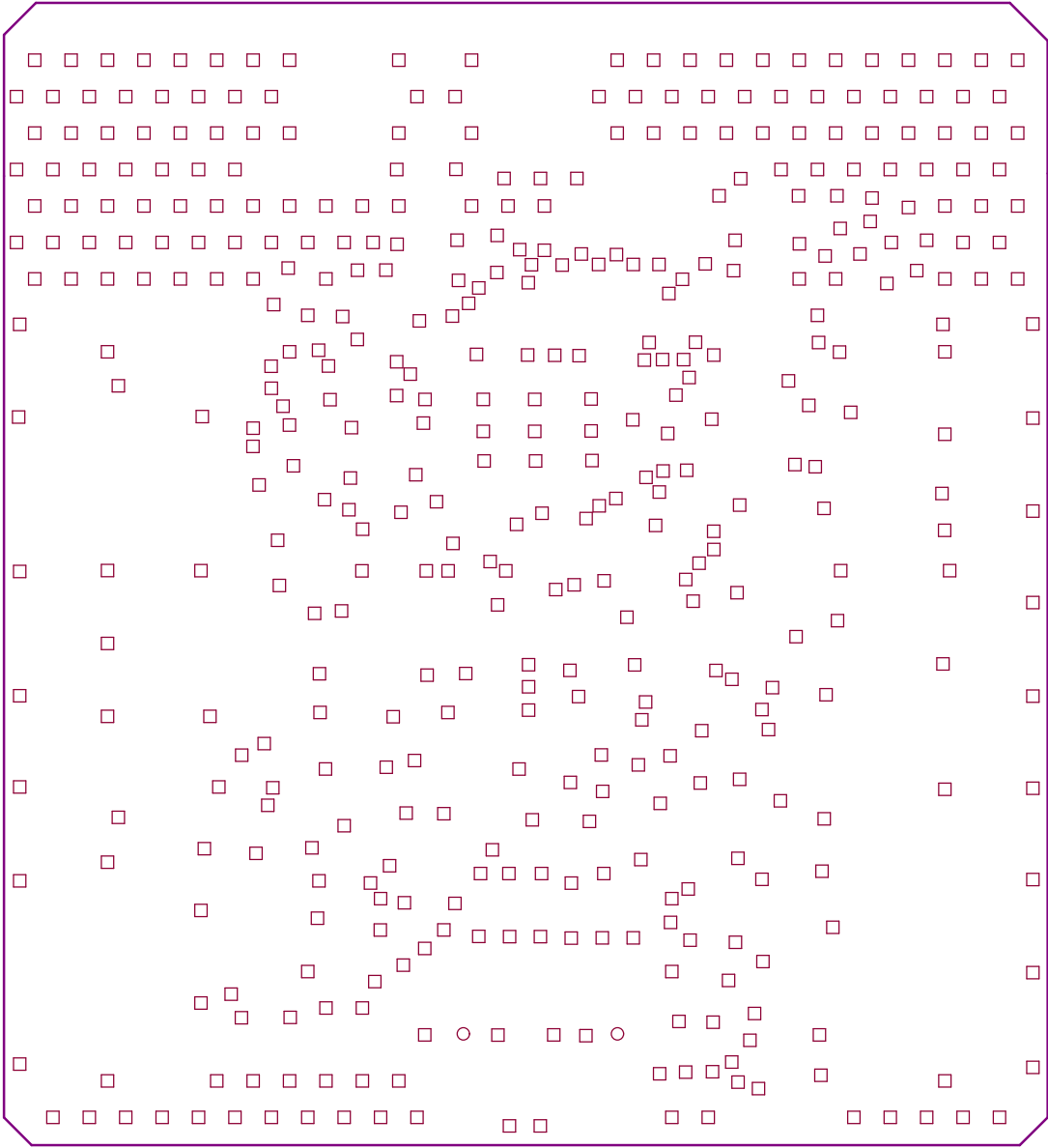
Date: 23-07-2024


Rev: A



Layer	Name	Material	Thickness	Constant	Board Layer Stack
	Top Overlay				
	Top Solder	Solder Resist	0.70mil	4.2	
1	Top Layer		1.60mil		
	Dielectric 1	FR-4	3.00mil	3.7	
2	Internal 1		1.20mil		
	Dielectric 3		50.00mil	4.5	
3	Internal 2		1.20mil		
	Dielectric 2	FR-4	3.00mil	3.7	
4	Bottom Layer		1.60mil		
	Bottom Solder	Solder Resist	0.70mil	4.2	
	Bottom Overlay				

Symbol	Count	Hole Size	Plated	Hole Type	Drill Layer Pair	Via/Pad	Pad Shape	Template	Description
□	438	11.81mil (0.30mm)	PTH	Round	Top Layer - Bottom Layer	Via	Rounded	(Mixed)	
○	2	39.37mil (1.00mm)	NPTH	Round	Top Layer - Bottom Layer	Pad	Rounded	c0hn100m105p0	
	440 Total								



Project: MiniBoard_WBA6x_QFN48_LDO_USB_SMA		
Layer: Drill Drawing	Gerber: .DRL	
Variant: [No Variations]	Ref: MB2296	
Date: 23-07-2024	Rev: A	