
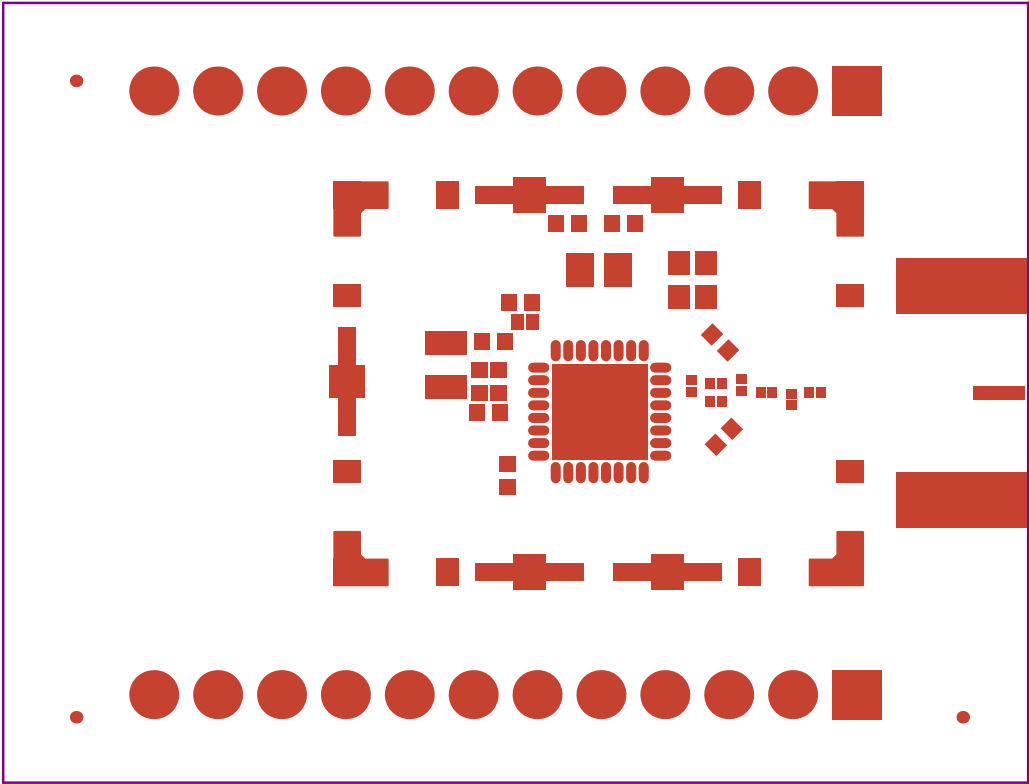

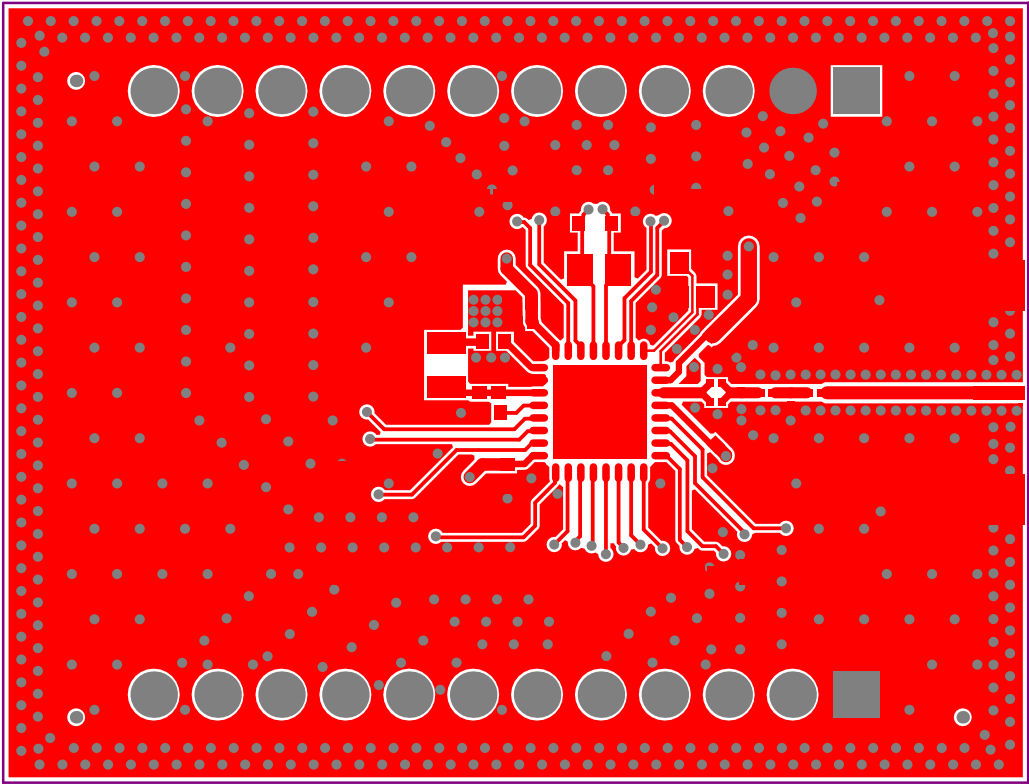



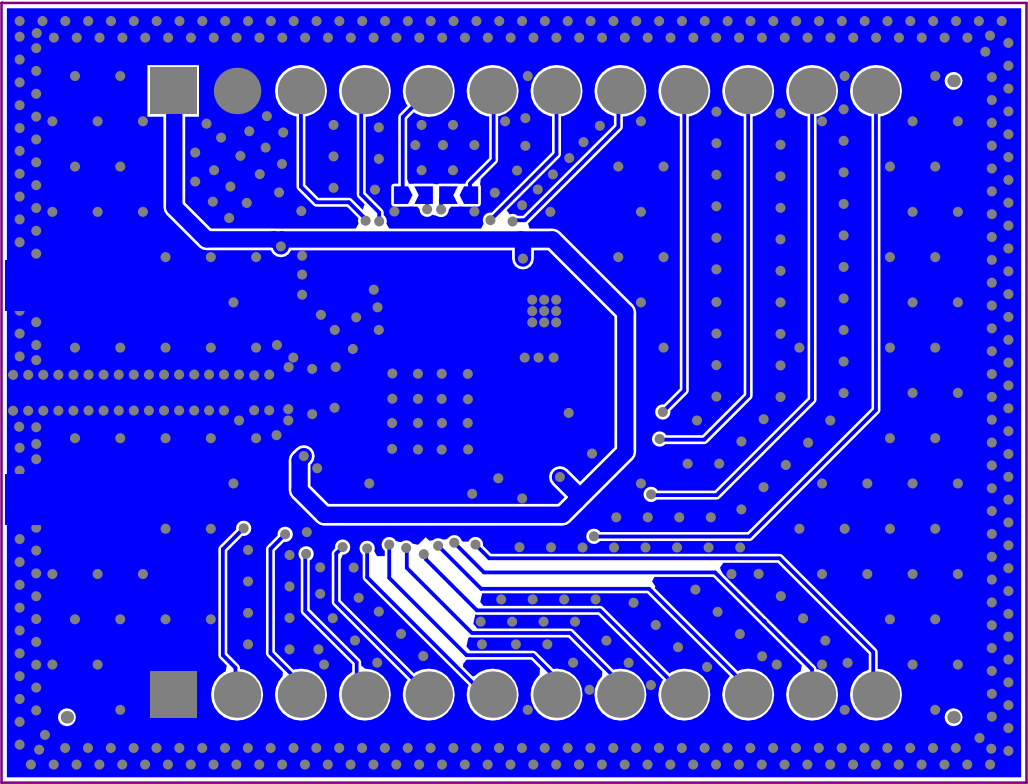
Project: STM32WB05_QFN32_2L_SMD		
Layer: Top Overlay	Gerber: .GTO	
Variant: [No Variations]	Ref: MB2161	
Date: 7 July 2024	Rev: A	




Project: STM32WB05_QFN32_2L_SMD		
Layer: <b>Top Solder</b>	Gerber: <b>.GTS</b>	
Variant: [No Variations]	Ref: MB2161	
Date: 7 July 2024	Rev: A	




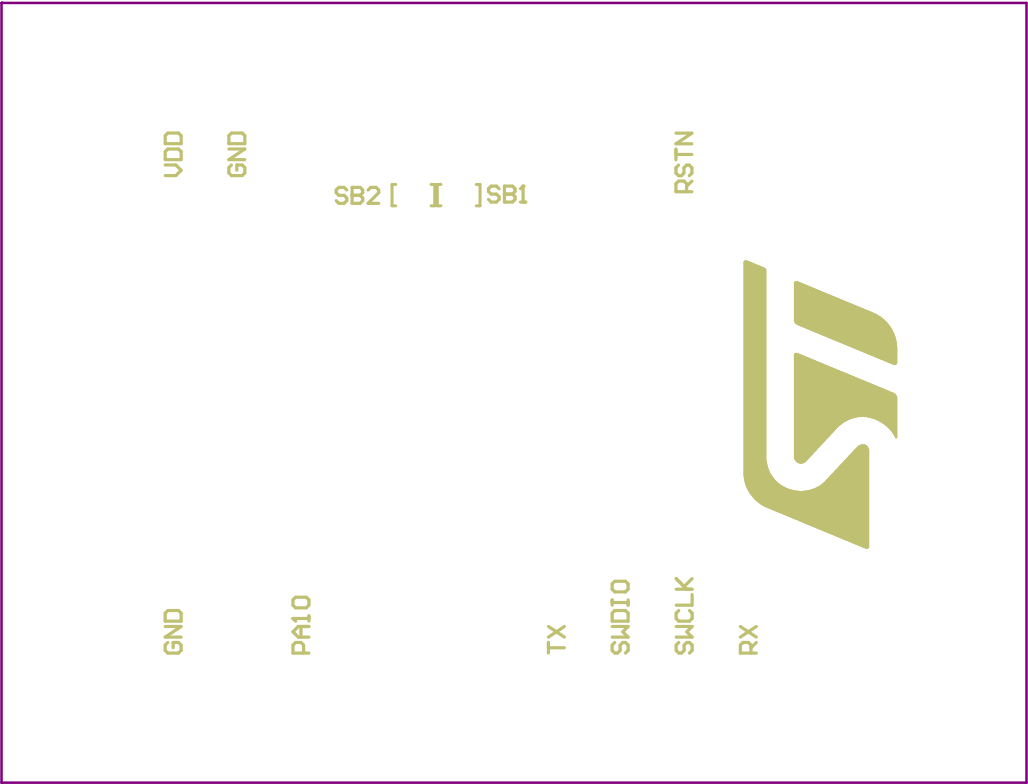
Project: STM32WB05_QFN32_2L_SMD		
Layer: <b>Top Layer</b>	Gerber: <b>.GTL</b>	
Variant: [No Variations]	Ref: MB2161	
Date: 7 July 2024	Rev: A	




Project: STM32WB05_QFN32_2L_SMD		
Layer: Bottom Layer	Gerber: .GBL	
Variant: [No Variations]	Ref: MB2161	
Date: 7 July 2024	Rev: A	



Project: STM32WB05_QFN32_2L_SMD		
Layer: Bottom Solder	Gerber:.GBS	
Variant: [No Variations]	Ref: MB2161	
Date: 7 July 2024	Rev: A	



Project: STM32WB05_QFN32_2L_SMD		
Layer: Bottom Overlay	Gerber: .GBO	
Variant: [No Variations]	Ref: MB2161	
Date: 7 July 2024	Rev: A	

PCB SPECIFICATIONS :

A. MATERIAL :

FR-4☒TG-170☐TG-150☐TG-140

B. MATERIAL FAMILY :

N/A

C. SOLDERMASK COLOR :

☒GREEN☐BLUE☐RED☐BLACK

D. SILKSCREEN COLOR :

☒WHITE☐YELLOW☐BLACK

E. SURFACE FINISH :

☒ENIG☐IMMERSION SILVER☐IMMERSION TIN  
☐HASL☐HASL (PB-FREE)☐GOLDEN FINGER

☐IMPEDANCE CONTROL :

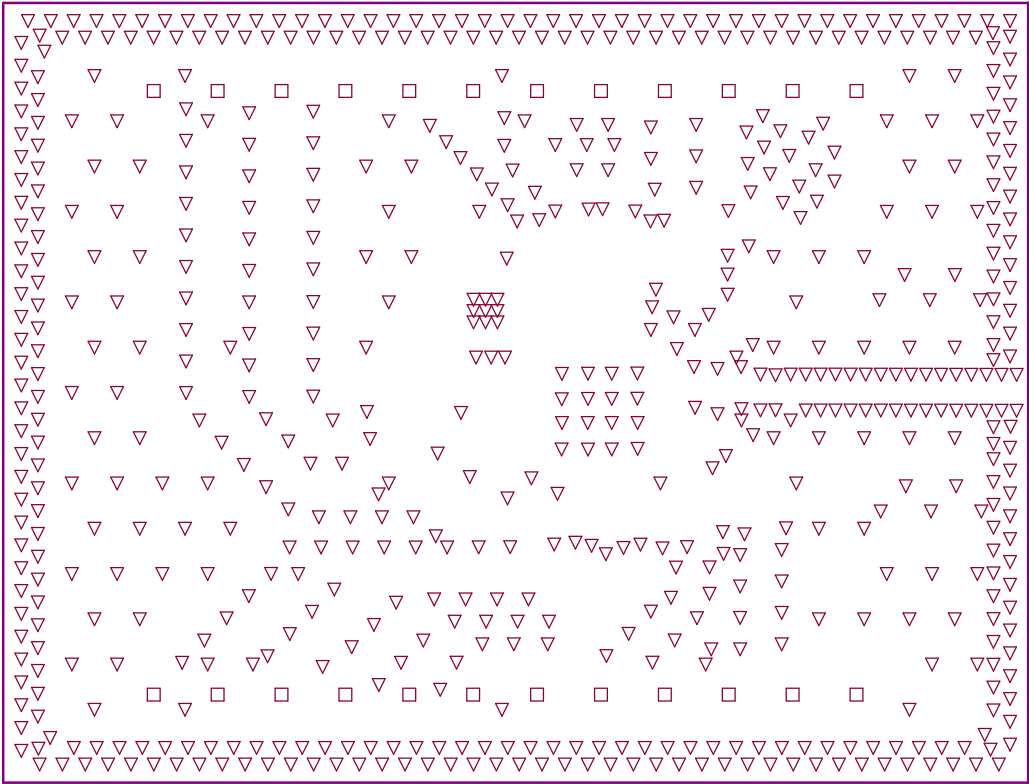
☐NO☒YES (SEE IMPEDANCE TABLE FOR DETAIL INFORMATION)

G. THROUGH VIA :


PLUG THE VIAS WHICH ARE COVERED WITH SOLDERMASK ONE OR TWO SIDE.  
PLUG MATERIAL : ☒SOLDERMASK☐NON-CONDUCTIVE EPOXY.

☐STACK-UP :

SEE LAYER STACK-UP SEQUENCE FOR OVERALL THICKNESS.



Layer	Name	Material	Thickness	Constant
	Top Overlay			
	Top Solder	Solder Resist	0.020mm	3.5
1	Top Layer		0.035mm	
	Dielectric 1	VT-47 (2X7628+2116)	0.508mm	4.28
2	Bottom Layer		0.035mm	
	Bottom Solder	Solder Resist	0.020mm	3.5
	Bottom Overlay			

Project: STM32WB05_QFN32_2L_SMD		
Layer: Drill Drawing	Gerber: .DRL	
Variant: [No Variations]	Ref: MB2161	
Date: 7 July 2024	Rev: A	

IMPEDANCE TABLE					
LAYER	TRACE (mm)	SPACING (mm)	IMPEDANCE (Single ended)	IMPEDANCE (Differential)	TOL.
TOP	0.52	0.161	50 ohm	NA	+/- 10%