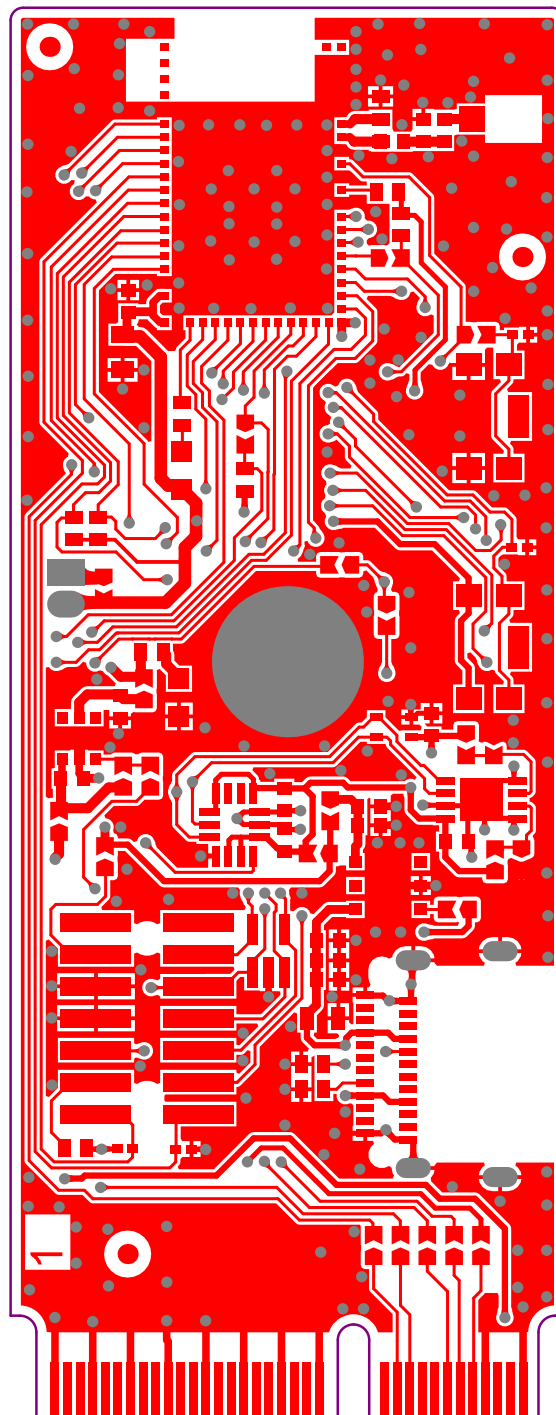


Top Solder

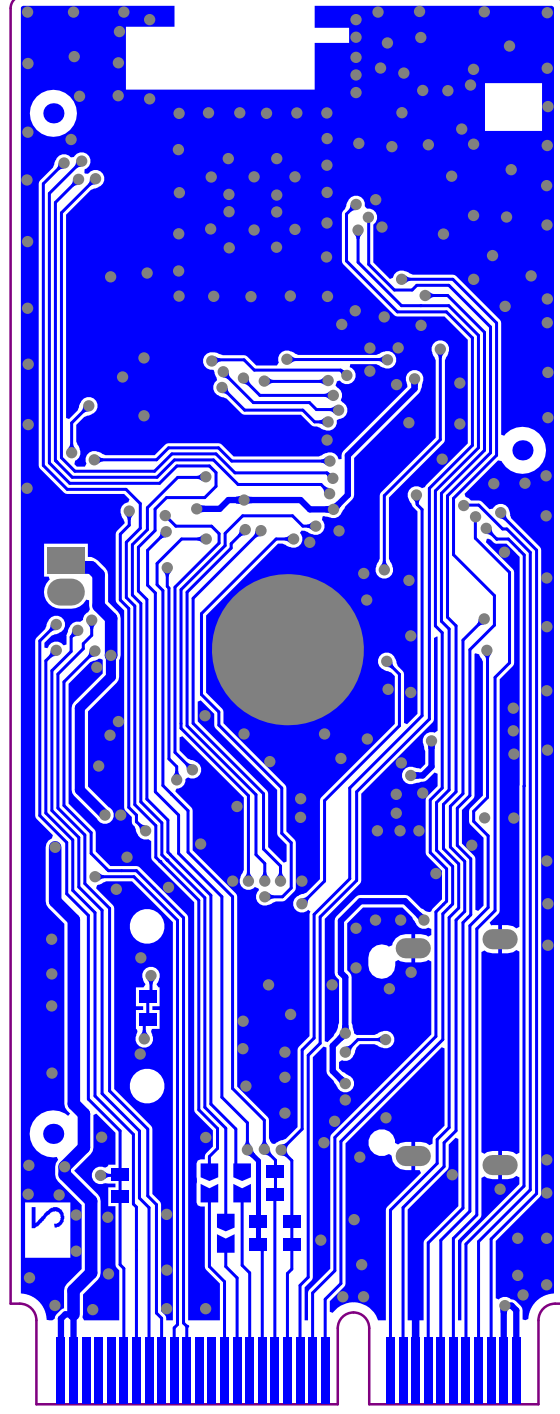
.GTS



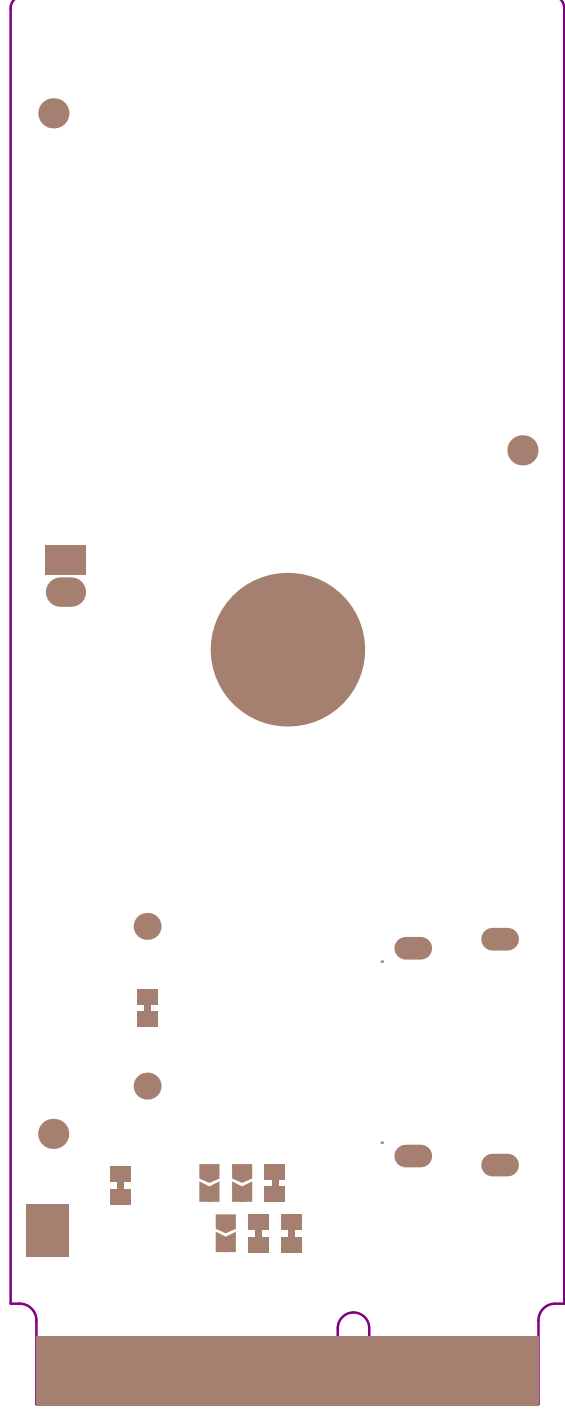
Top Layer

.GTL

Bottom Layer



.GBL



.GB2

Bottom Solder

PCB SPECIFICATIONS :

A. MATERIAL :

FR-4

☐ TG-170

☒ TG-150

☐ TG-140

B. MATERIAL FAMILY :

N/A

C. SOLDERMASK COLOR :

☐ GREEN

☐ WHITE

☐ RED

☒ Blue ink PANTONE 2955

D. SILKSCREEN COLOR :

☒ WHITE

☐ YELLOW

☐ BLACK

E. SURFACE FINISH :

☒ ENIG

☐ IMMERSION SILVER

☐ IMMERSION TIN

☐ HASL

☐ HASL (PB-FREE)

☐ GOLDEN FINGER

F. IMPEDANCE CONTROL :

☐ NO

☒ YES (SEE IMPEDANCE FILE)

G. THROUGH VIA :

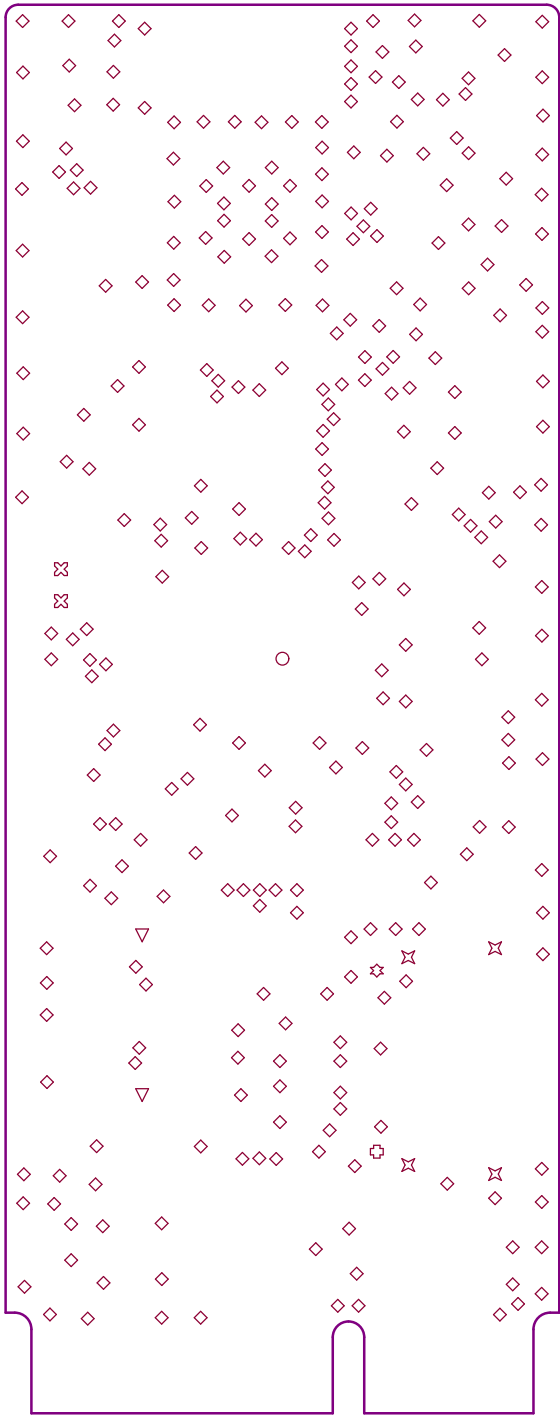
PLUG THE VIAS WHICH ARE COVERED WITH SOLDERMASK ONE OR TWO SIDE.

PLUG MATERIAL : ☒ SOLDERMASK

☐ NON-CONDUCTIVE EPOXY.

H. STACK-UP :

SEE LAYER STACK-UP SEQUENCE FOR OVERALL THICKNESS.



Layer	Name	Material	Thickness	Constant	Board Layer Stack
	Top Overlay				
	Top Solder	Solder Resist	0.015mm	3.5	
1	Top Layer		0.035mm		
	Dielectric 1	FR-4	0.800mm	4.8	
2	Bottom Layer		0.035mm		
	Bottom Solder	Solder Resist	0.015mm	3.5	
	Bottom Overlay				

PCB : TYPE 2

ASPECT-RATIO, AXE Z :
<6 :1
LEVEL "A"

MINIMUN PARAMETERS

DEFAULT
TRACKS : 0.120mm
GAPS : 0.120mm

Symbol	Count	Hole Size	Plated	Hole Type	Drill Layer Pair	Via/Pad	Pad Shape	Hole Length	Routed Path Length
◆	308	0.200mm (7.87mil)	PTH	Round	Top Layer - Bottom Layer	Via	Rounded	-	-
✕	4	0.500mm (19.69mil)	PTH	Slot	Top Layer - Bottom Layer	Pad	Rounded	1.100mm (43.31mil)	0.600mm (23.62mil)
⊕	1	0.650mm (25.59mil)	NPTH	Round	Top Layer - Bottom Layer	Pad	Rounded	-	-
✱	1	0.650mm (25.59mil)	NPTH	Slot	Top Layer - Bottom Layer	Pad	Rounded	0.950mm (37.40mil)	0.300mm (11.81mil)
⊗	2	0.800mm (31.50mil)	PTH	Round	Top Layer - Bottom Layer	Pad	(Mixed)	-	-
▽	2	0.970mm (38.19mil)	NPTH	Round	Top Layer - Bottom Layer	Pad	Rounded	-	-
○	1	4.150mm (163.39mil)	PTH	Round	Top Layer - Bottom Layer	Pad	Rounded	-	-
	319 Total								

Slot definitions : Routed Path Length = Calculated from tool start centre position to tool end centre position.
Hole Length = Routed Path Length + Tool Size = Slot length as defined in the PCB layout