
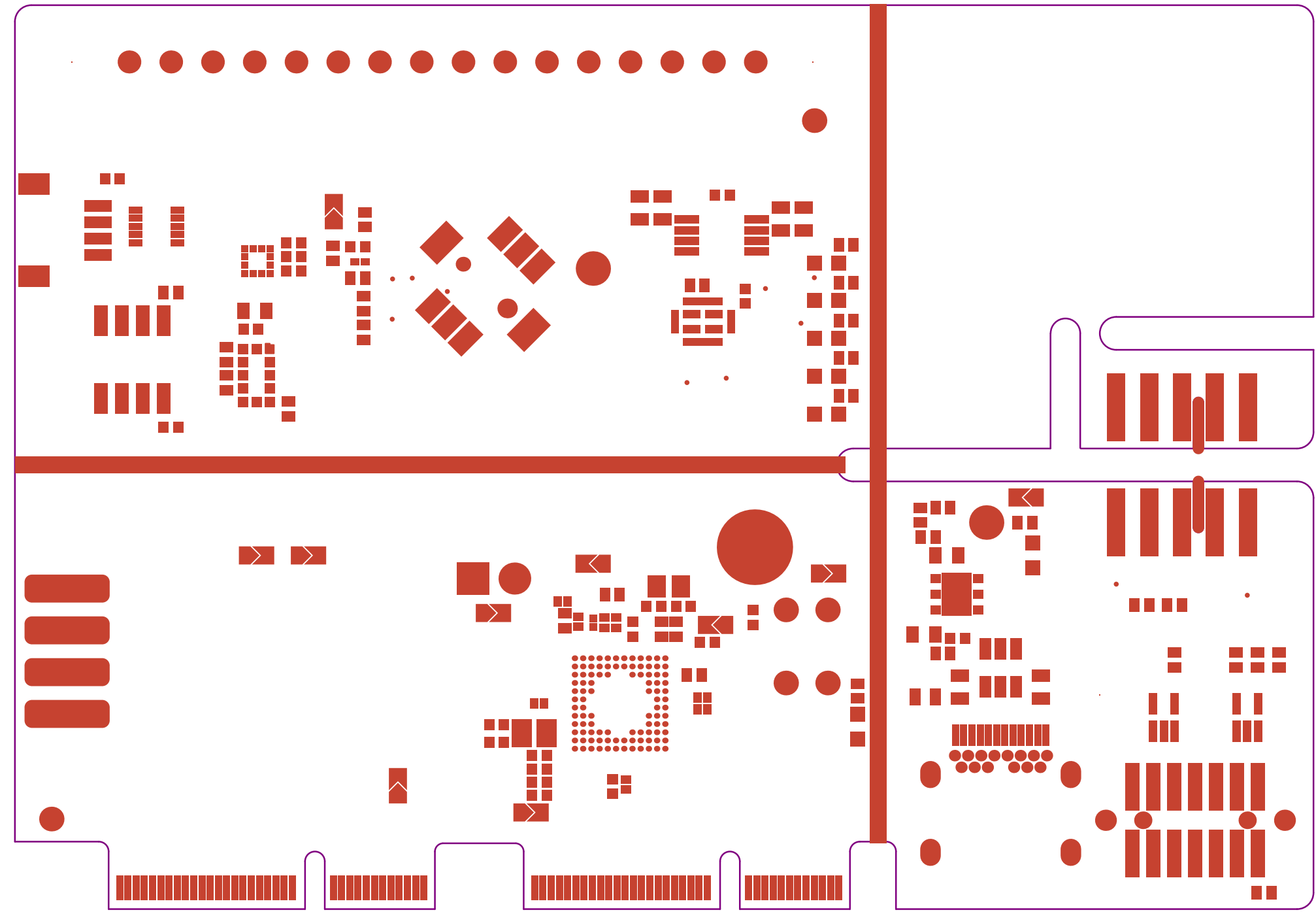

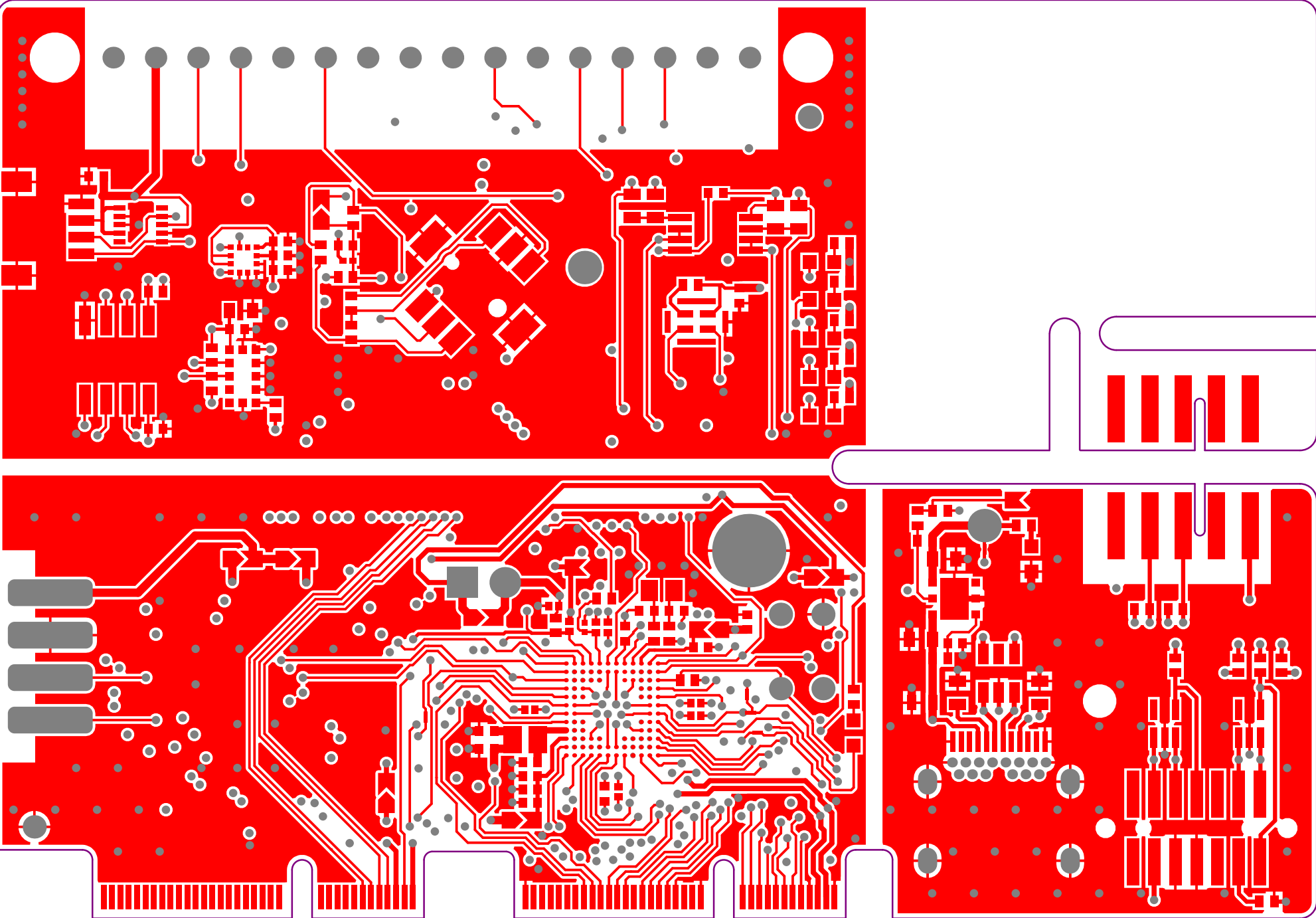



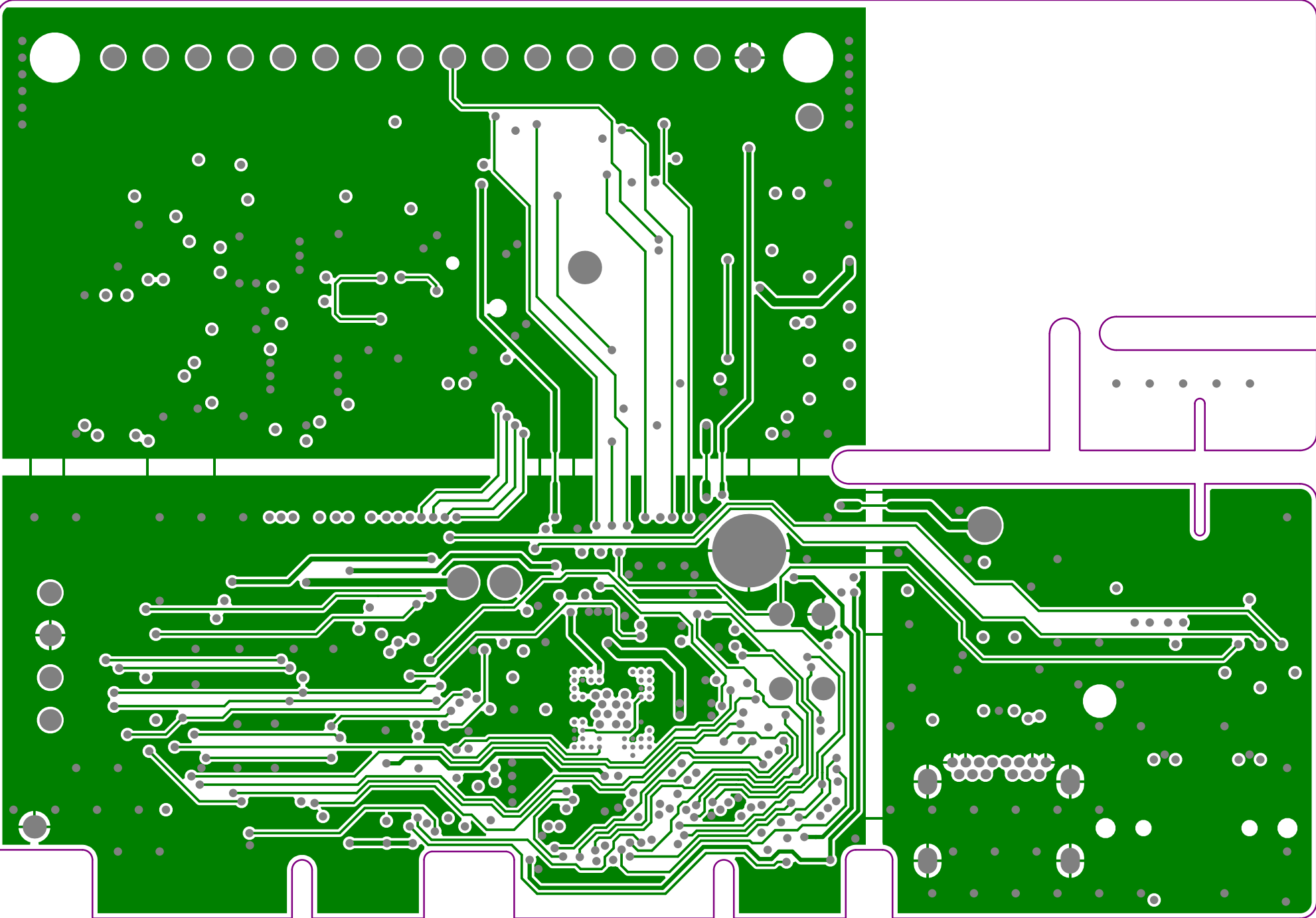
Project: Naquada		
Layer: Top Overlay	Gerber: .GTO	
Variant: [No Variations]	MB2095	
Date: 25-March-2025	Rev: C	




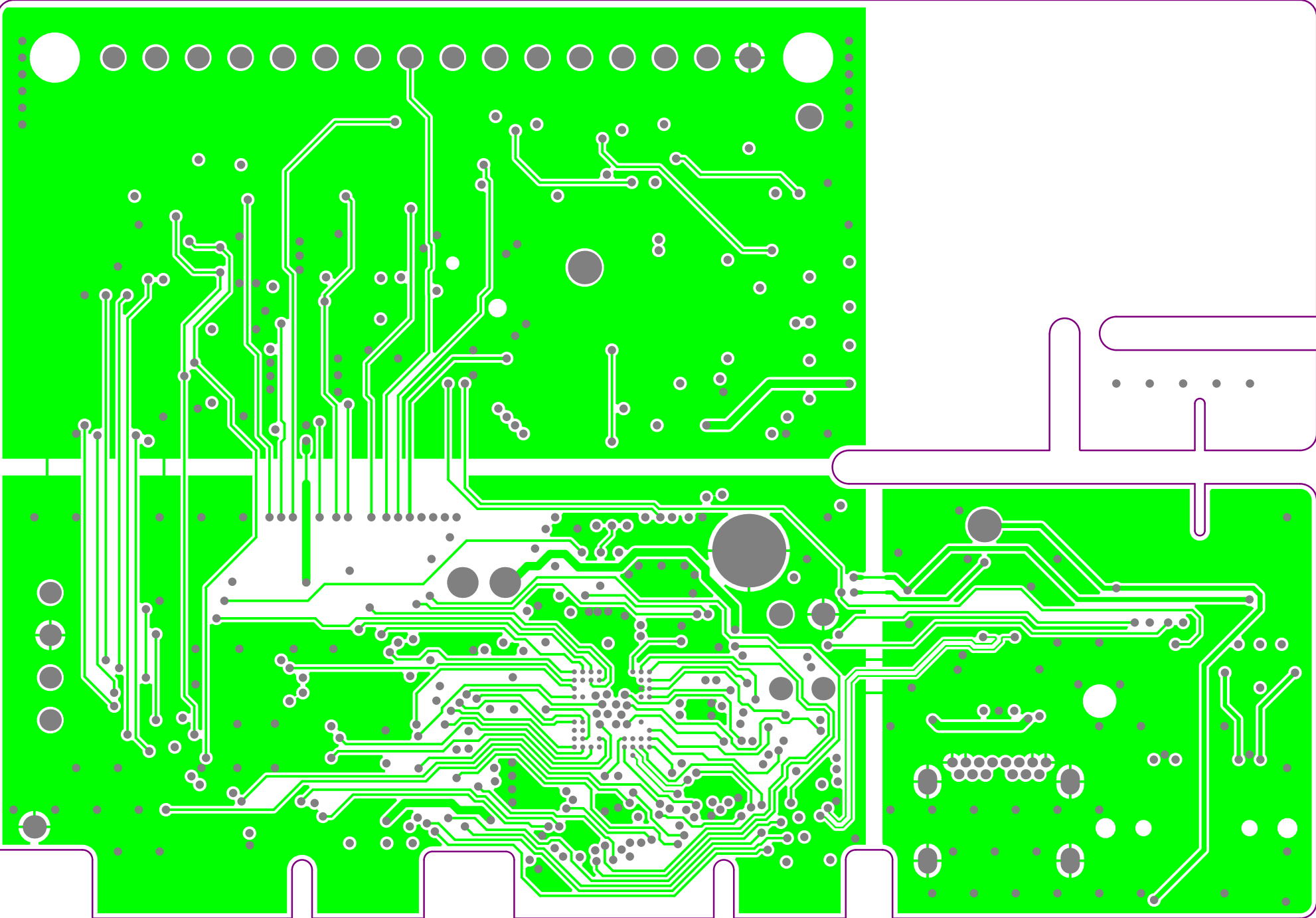
Project: Naquada		
Layer: Top Solder	Gerber: .GTS	
Variant: [No Variations]	MB2095	
Date: 25-March-2025	Rev: C	




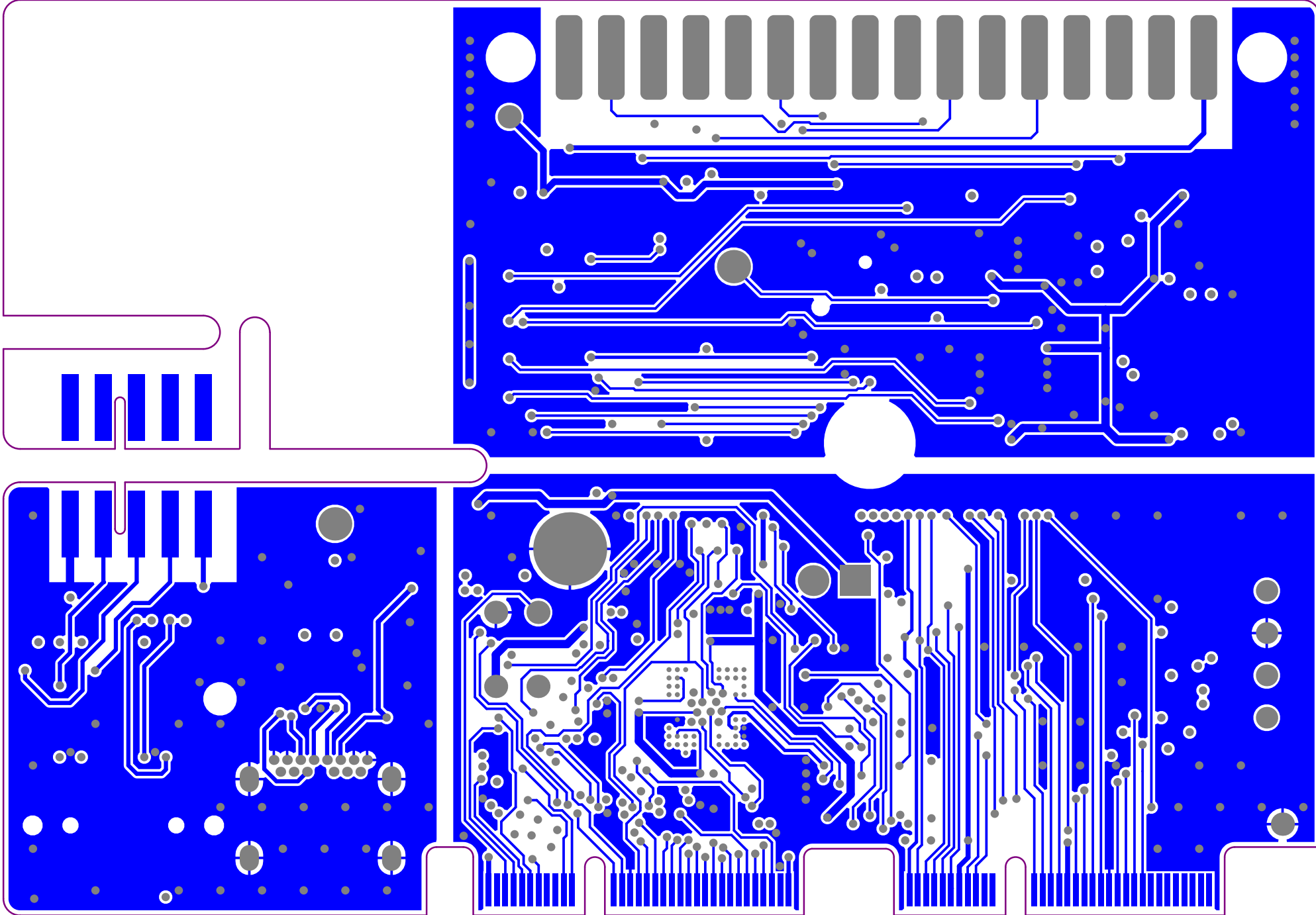
Project: Naquada		
Layer: Top Layer	Gerber: .GTL	
Variant: [No Variations]	MB2095	
Date: 25-March-2025	Rev: C	




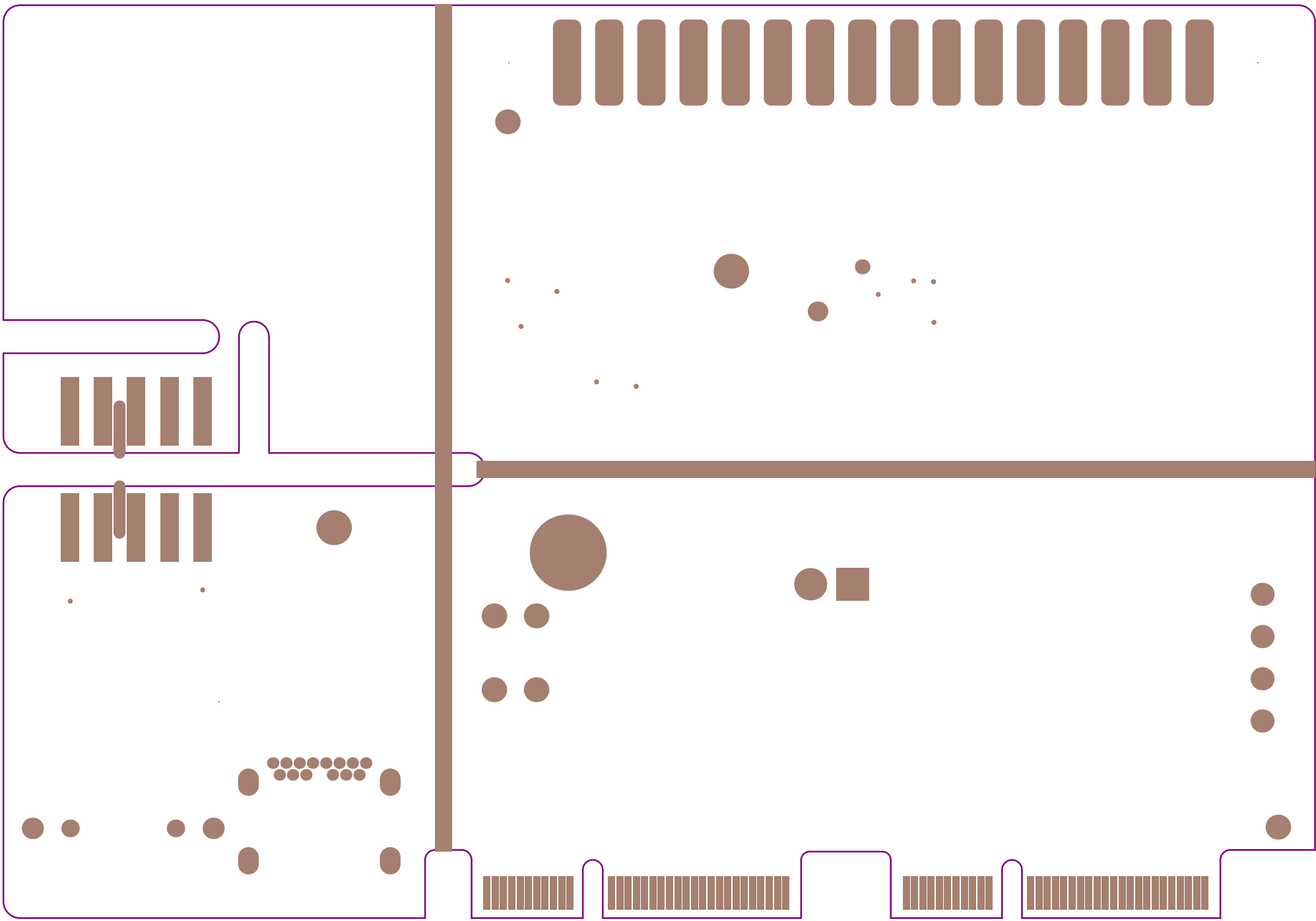
Project: Naquada		
Layer: Layer 1	Gerber: .G1	
Variant: [No Variations]	MB2095	
Date: 25-March-2025	Rev: C	




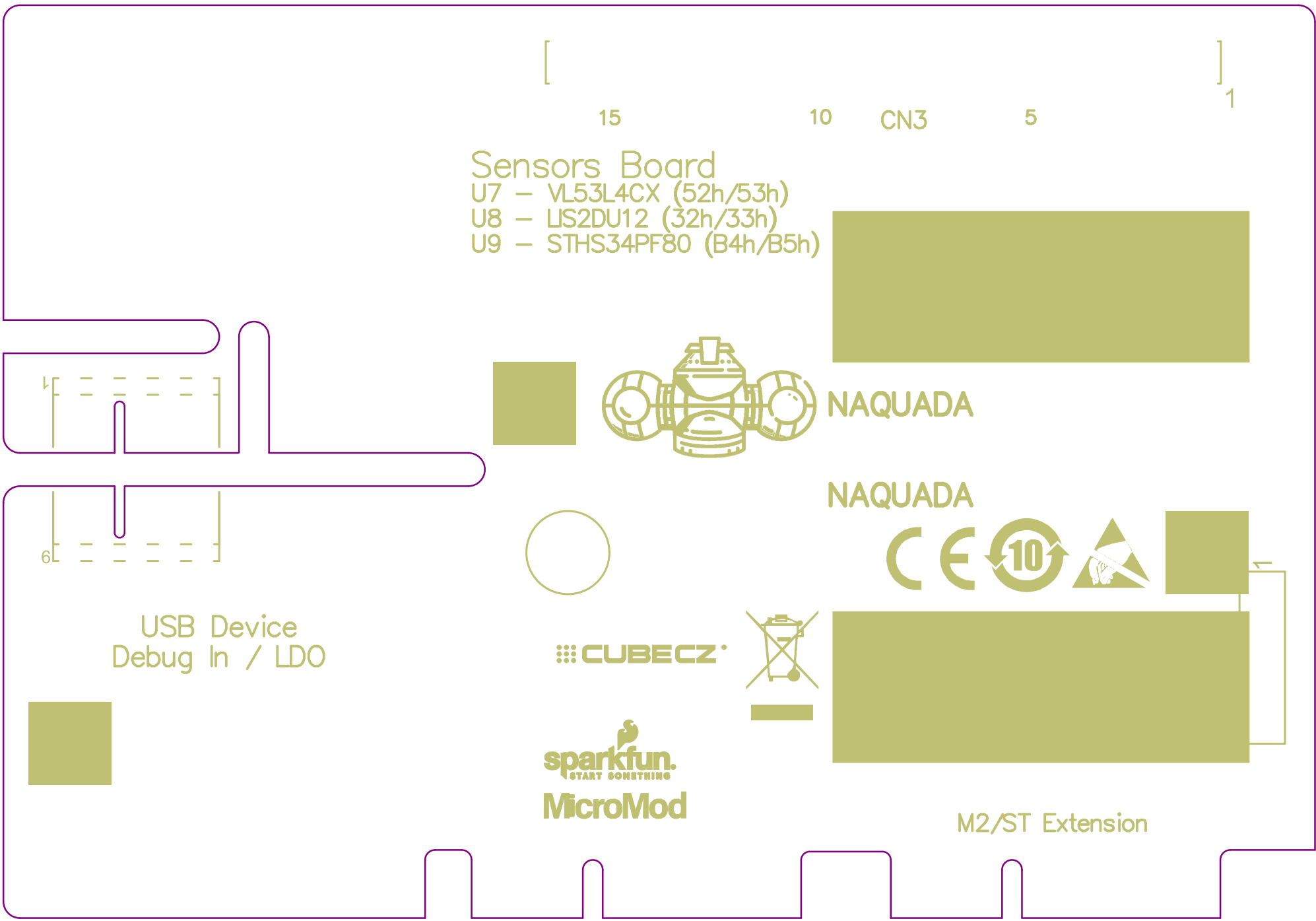
Project: Naquada		
Layer: Layer 2	Gerber: .G2	
Variant: [No Variations]	MB2095	
Date: 25-March-2025	Rev: C	




Project: Naquada		
Layer: Bottom Layer	Gerber: .GBL	
Variant: [No Variations]	MB2095	
Date: 25-March-2025	Rev: C	



Project: Naquada		
Layer: Bottom Solder	Gerber: .GBS	
Variant: [No Variations]	MB2095	
Date: 25-March-2025	Rev: C	



Project: Naquada		
Layer: Bottom Overlay	Gerber: .GBO	
Variant: [No Variations]	MB2095	
Date: 25-March-2025	Rev: C	

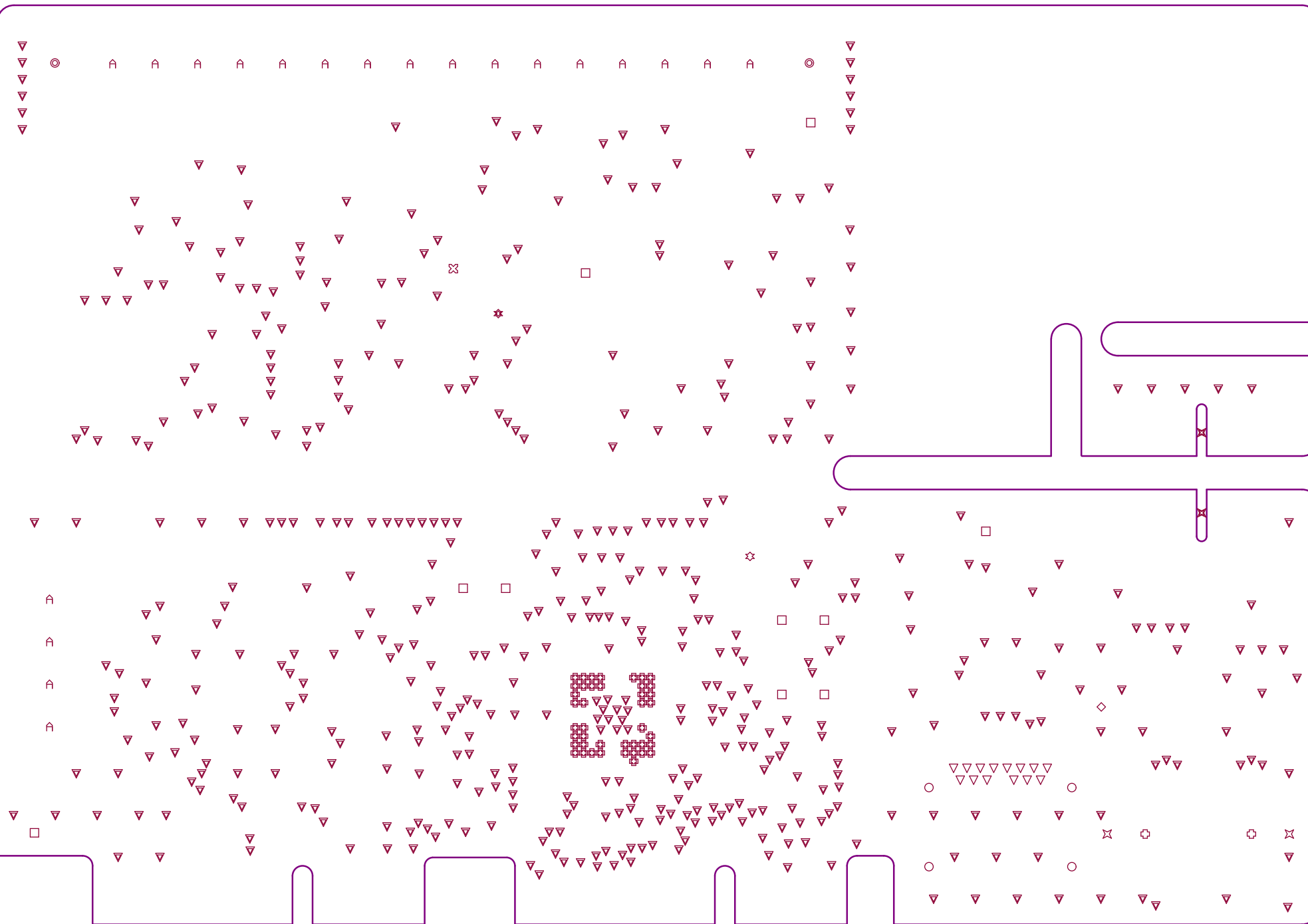
Layer	Name	Material	Thickness	Constant	Board Layer Stack
	Top Overlay				
	Top Solder	Solder Resist	0.010mm	3.5	
	Top Surface Finish	Nickel, Gold	0.004mm		
1	Top Layer		0.036mm		
	Dielectric 2	IS400 1080	0.076mm	3.91	
	Dielectric 4	IS400 7628	0.201mm	4.39	
2	Layer 1	CF-004	0.018mm		
	Dielectric 1	IS 400 2116	0.102mm	4.39	
3	Layer 2	CF-004	0.018mm		
	Dielectric 5	IS400 7628	0.201mm	4.39	
	Dielectric 3	IS400 1080	0.076mm	3.91	
4	Bottom Layer		0.036mm		
	Bottom Surface Finish	Nickel, Gold	0.004mm		
	Bottom Solder	Solder Resist	0.010mm	3.5	
	Bottom Overlay				

Total board thickness:0.790mm

Symbol	Count	Hole Size	Plated	Hole Type	Drill Layer Pair	Via/Pad	Pad Shape	Template	Description	Hole Tolerance (+)	Hole Tolerance (-)	Hole Length	Routed Path Length
⊗	1	31.50mil (0.80mm)	NPTH	Round	Top Layer - Bottom Layer	Pad	Rounded	c0hn80m90p0				-	-
⊛	1	43.31mil (1.10mm)	NPTH	Round	Top Layer - Bottom Layer	Pad	Rounded	c0hn110m120p0				-	-
◇	1	78.74mil (2.00mm)	NPTH	Round	Top Layer - Bottom Layer	Pad	Rectangle	s0hn200				-	-
⊛	1	125.98mil (3.20mm)	PTH	Round	Top Layer - Bottom Layer	Pad	Rounded	c440h320m460				-	-
⊕	2	38.19mil (0.97mm)	NPTH	Round	Top Layer - Bottom Layer	Pad	Rounded	c0hn97m107				-	-
⊗	2	46.85mil (1.19mm)	NPTH	Round	Top Layer - Bottom Layer	Pad	Rounded	c0hn119m129				-	-
⊙	2	118.11mil (3.00mm)	NPTH	Round	Top Layer - Bottom Layer	Pad	Rectangle	s0hn300				-	-
⊗	2	133.86mil (3.40mm)	NPTH	Slot	Top Layer - Bottom Layer	Pad	Rounded	c0hn340_60m350				23.62mil (0.60mm)	-110.24mil (-2.80mm)
○	4	17.72mil (0.45mm)	PTH	Slot	Top Layer - Bottom Layer	Pad	Rounded	r155_115h45_85r57m165_125				33.47mil (0.85mm)	15.75mil (0.40mm)
□	10	39.37mil (1.00mm)	PTH	Round	Top Layer - Bottom Layer	Pad	Rounded	(Mixed)				-	-
▽	14	15.75mil (0.40mm)	PTH	Round	Top Layer - Bottom Layer	Pad	Rounded	c60h40m70				-	-
⌒	20	35.43mil (0.90mm)	PTH	Round	Top Layer - Bottom Layer	Pad	Rounded	(Mixed)				-	-
⊕	42	3.94mil (0.10mm)	PTH	Round	Top Layer - Bottom Layer	Via	Rounded	v30h10m0mx0				-	-
▽	494	7.87mil (0.20mm)	PTH	Round	Top Layer - Bottom Layer	Via	Rounded	(Mixed)				-	-
	596 Total												

Slot definitions : Routed Path Length = Calculated from tool start centre position to tool end centre position.
Hole Length = Routed Path Length + Tool Size = Slot length as defined in the PCB layout

THE COMPONENTS WITH PLATED THROUGH HOLE (PTH) MAY BE WELDED (CABLED) IN "PIN-IN-PASTE" MODE (IF NECESSARY)



PCB SPECIFICATIONS :

- A. MATERIAL :

B. MATERIAL FAMILY :

C. SOLDERMASK COLOR :

D. SILKSCREEN COLOR :

E. SURFACE FINISH :

F. IMPEDANCE CONTROL :

G. THROUGH VIA :

H. STACK-UP :
- FR-4

N/A

☒ GREEN

☒ WHITE

☒ ENIG

☐ NO

☒ YES (SEE IMPEDANCE TABLE FOR DETAIL INFORMATION)

PLUG THE VIAS WHICH ARE COVERED WITH SOLDERMASK ONE OR TWO SIDE.

PLUG MATERIAL : ☒ SOLDERMASK ☐ NON-CONDUCTIVE EPOXY.

SEE LAYER STACK-UP SEQUENCE FOR OVERALL THICKNESS.
- ☐ TG-170

☒ TG-150

☐ TG-140

☐ WHITE

☐ YELLOW

☐ IMMERSION SILVER

☐ HASL

☐ HASL (PB-FREE)

☐ BLACK

☐ BLACK

☐ IMMERSION TIN

☐ GOLDEN FINGER


☐ Blue ink PANTONE 2955

PCB : TYPE 3

ASPECT-RATIO, AXE Z :
6:1 to 8:1
LEVEL "B"

MINIMUM PARAMETERS

DEFAULT
TRACKS : 0.150mm
GAPS : 0.250mm

Project: Naquada		
Layer: Drill Drawing	Gerber: .DRL	
Variant: [No Variations]	MB2095	
Date: 25-March-2025	Rev: C	