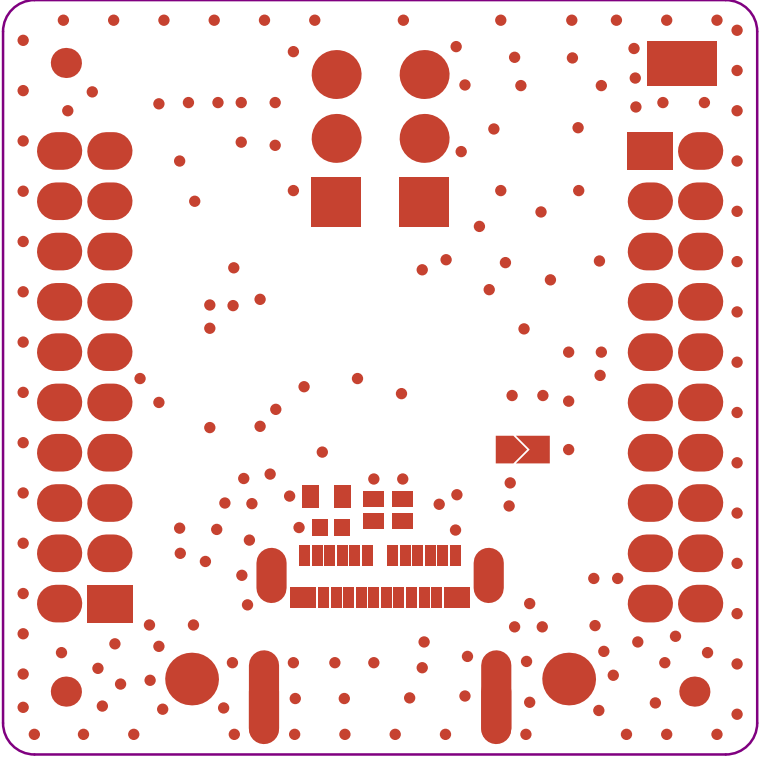


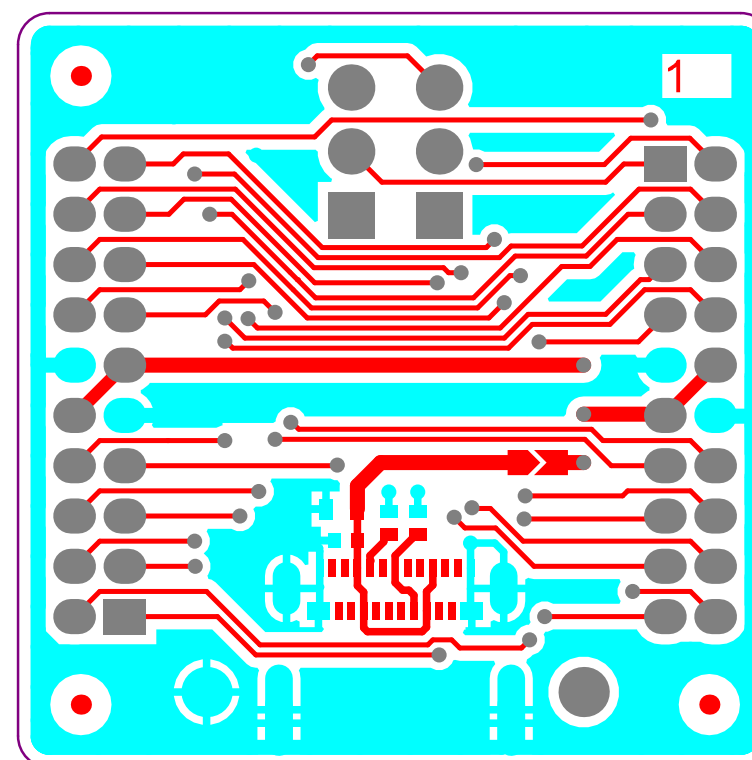
Top Overlay

.GTO



Top Solder

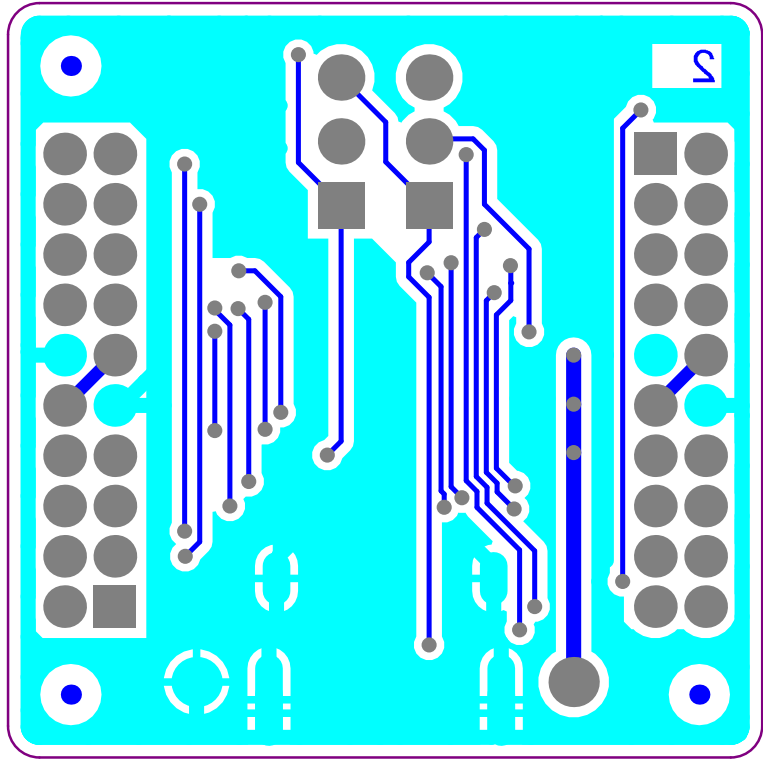
.GTS



Top Layer

.GTL

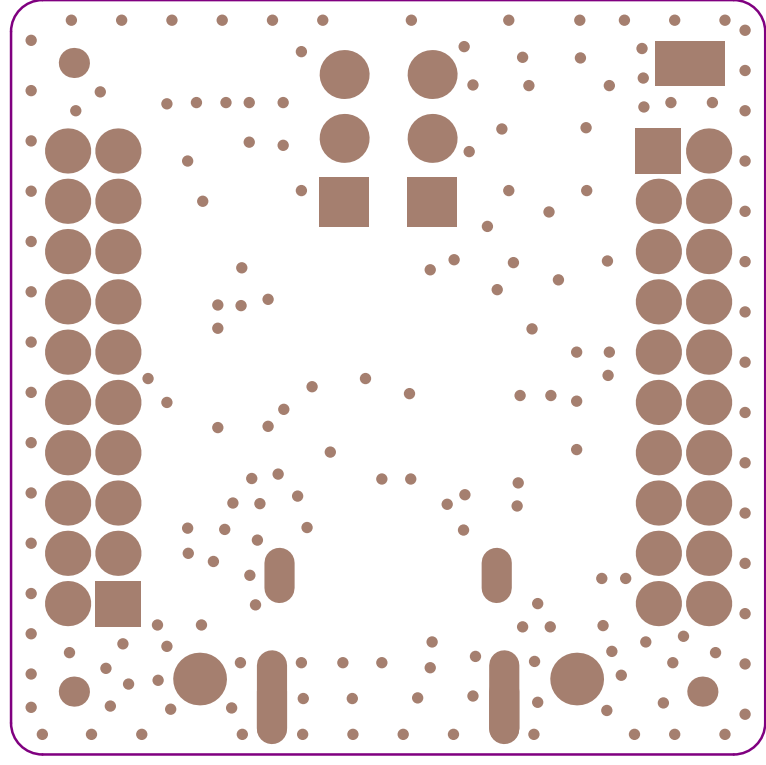
Bottom Layer



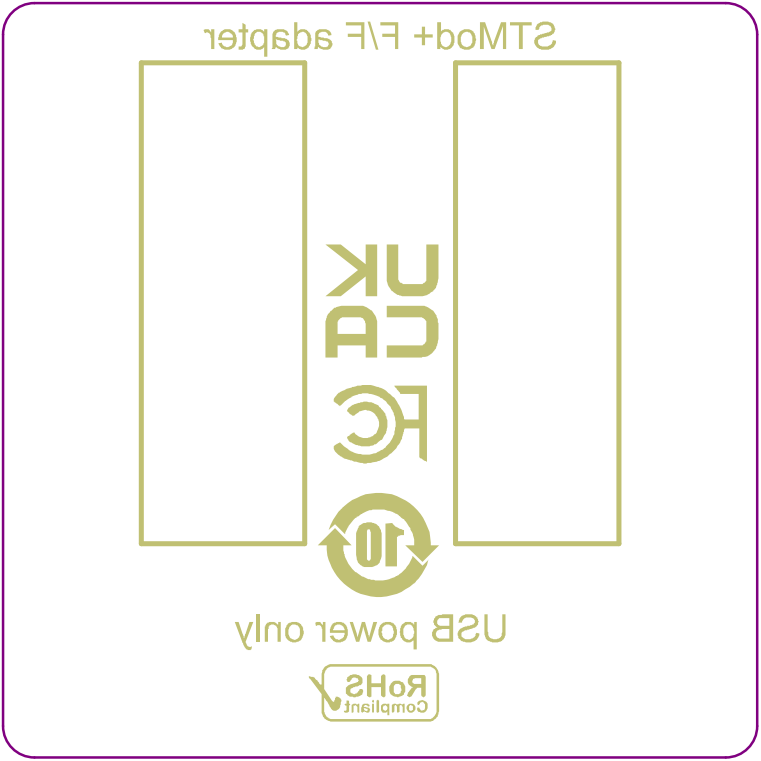
.GBL

Bottom Solder

.GB2



Bottom Overlay



.GBO

PCB SPECIFICATIONS :

A. MATERIAL :

FR-4

☐ TG-170

☐ TG-150

☒ TG-140

B. MATERIAL FAMILY :

N/A

C. SOLDERMASK COLOR :

☐ GREEN

☐ WHITE

☐ RED

☒ Blue ink PANTONE 2955

D. SILKSCREEN COLOR :

☒ WHITE

☐ YELLOW

☐ BLACK

☐ Blue ink PANTONE 2955

E. SURFACE FINISH :

☒ ENIG

☐ IMMERSION SILVER

☐ IMMERSION TIN

☐ HASL

☐ HASL (PB-FREE)

☐ GOLDEN FINGER

☐ IMPEDANCE CONTROL :

☒ NO

☐ YES (SEE IMPEDANCE TABLE FOR DETAIL INFORMATION)

G. THROUGH VIA :

PLUG THE VIAS WHICH ARE COVERED WITH SOLDERMASK ONE OR TWO SIDE.

PLUG MATERIAL : ☒ SOLDERMASK

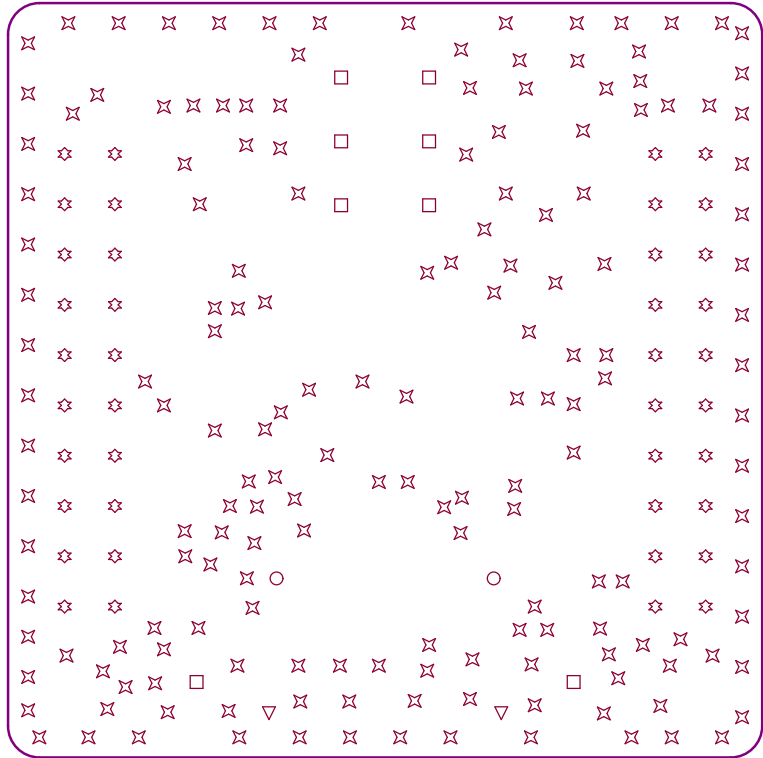
☐ NON-CONDUCTIVE EPOXY.

☐ STACK-UP :

SEE LAYER STACK-UP SEQUENCE FOR OVERALL THICKNESS.

MINIMUM PARAMETERS
DEFAULT TRACKS : 0.20mm GAPS : 0.20mm

PCB : TYPE 2
ASPECT-RATIO, AXE Z : < 6:1 LEVEL "A"



Layer	Name	Material	Thickness	Constant
	Top Overlay			
	Top Solder	Solder Resist	0.020mm	4.2
1	Top Layer		0.018mm	
	Dielectric 2	8 x 7628	1.464mm	4.2
2	Bottom Layer		0.018mm	
	Bottom Solder	Solder Resist	0.020mm	4.2
	Bottom Overlay			

Drill Drawing

.DRL

Symbol	Count	Hole Size	Plated	Hole Type	Drill Layer Pair	Via/Pad	Pad Shape
○	2	0.600mm (23.62mil)	PTH	Slot	Top Layer - Bottom Layer	Pad	Rounded
▽	2	0.600mm (23.62mil)	PTH	Slot	Top Layer - Bottom Layer	Pad	Rounded
□	8	1.000mm (39.37mil)	PTH	Round	Top Layer - Bottom Layer	Pad	Rounded
☆	40	0.900mm (35.43mil)	PTH	Round	Top Layer - Bottom Layer	Pad	(Mixed)
✧	171	0.350mm (13.78mil)	PTH	Round	Top Layer - Bottom Layer	Via	Rounded
	223 Total						

Slot definitions : Routed Path Length = Calculated from tool start centre position to tool end centre position.
Hole Length = Routed Path Length + Tool Size = Slot length as defined in the PCB layout