

Project: 5 inch LCD daughter board

Layer: **M14-Top Assembly**

Gerber: **.GM14**

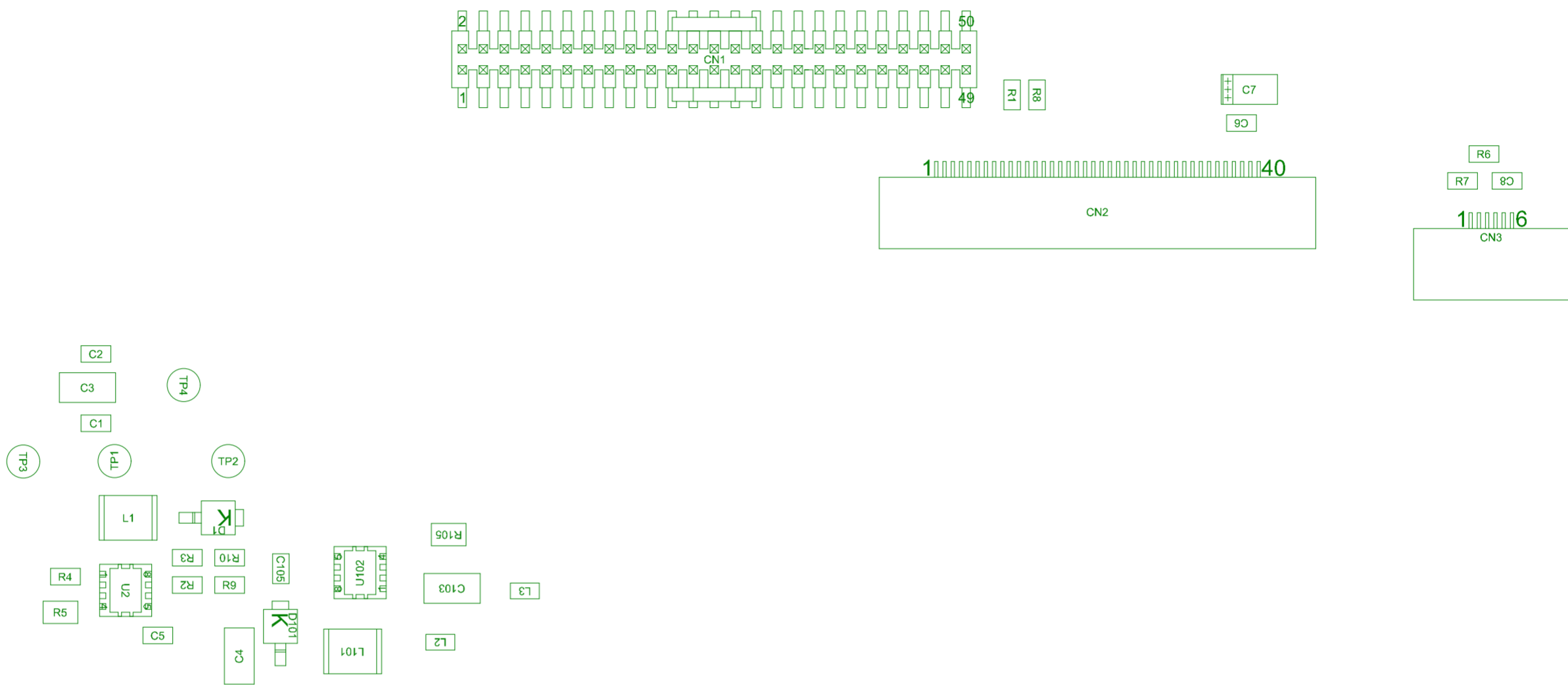
Variant: [No Variations]

Ref: MB1860

Date: 30-AUG-23

Rev: B





Project: 5 inch LCD daughter board

Layer: M15-Bottom Assembly

Variant: [No Variations]

Date: 30-AUG-23

Gerber:.GM15

Ref: MB1860

Rev: B

