
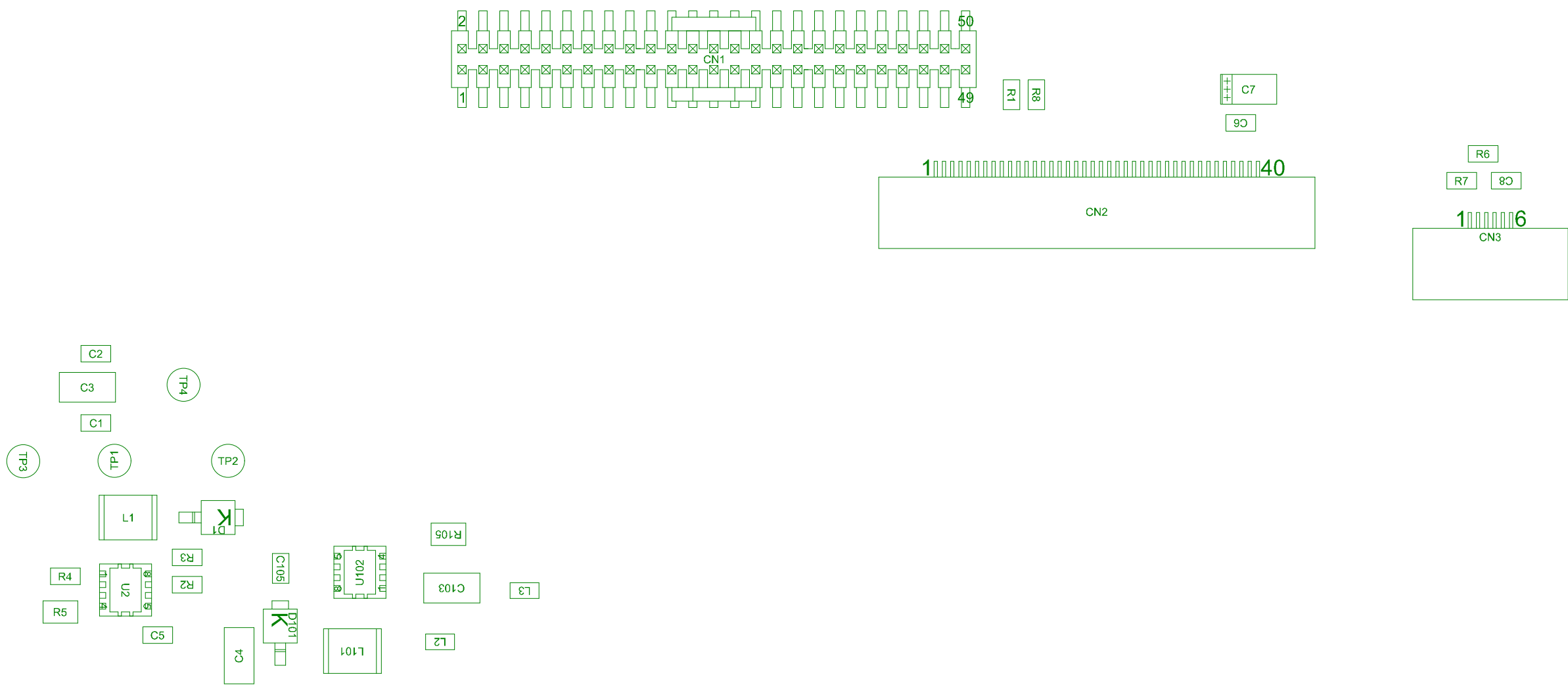


Project: 5 inch LCD daughter board		
Layer: M14-Top Assembly	Gerber: .GM14	
Variant: [No Variations]	Ref: MB1860	
Date: 18-NOV-21	Rev: A	



Project: 5 inch LCD daughter board

Layer: M15-Bottom Assembly

Variant: [No Variations]

Date: 18-NOV-21

Gerber: .GM15

Ref: MB1860

Rev: A

