
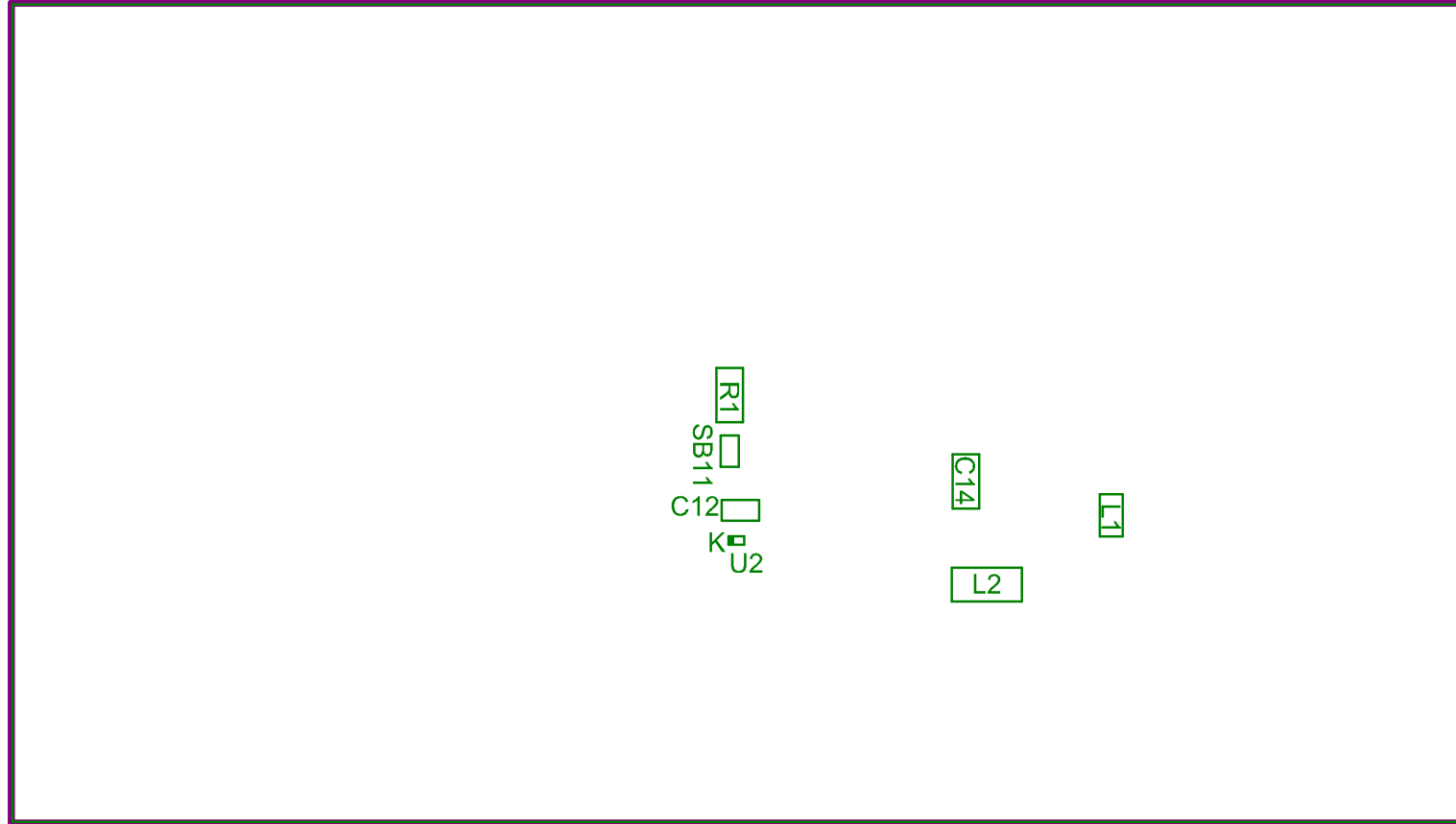



Project: STM32WL_QFN48_4Layers_WMBUS169MHz_RefBoard		
Layer: Top Assembly	Gerber: .GM14	
Variant: [No Variations]	Ref: MB1792	
Date: 01-04-2022	Rev: A	



Project: STM32WL_QFN48_4Layers_WMBUS169MHz_RefBoard		
Layer: Bottom Assembly	Gerber:.GM15	
Variant: [No Variations]	Ref: MB1792	
Date: 01-04-2022	Rev: A	