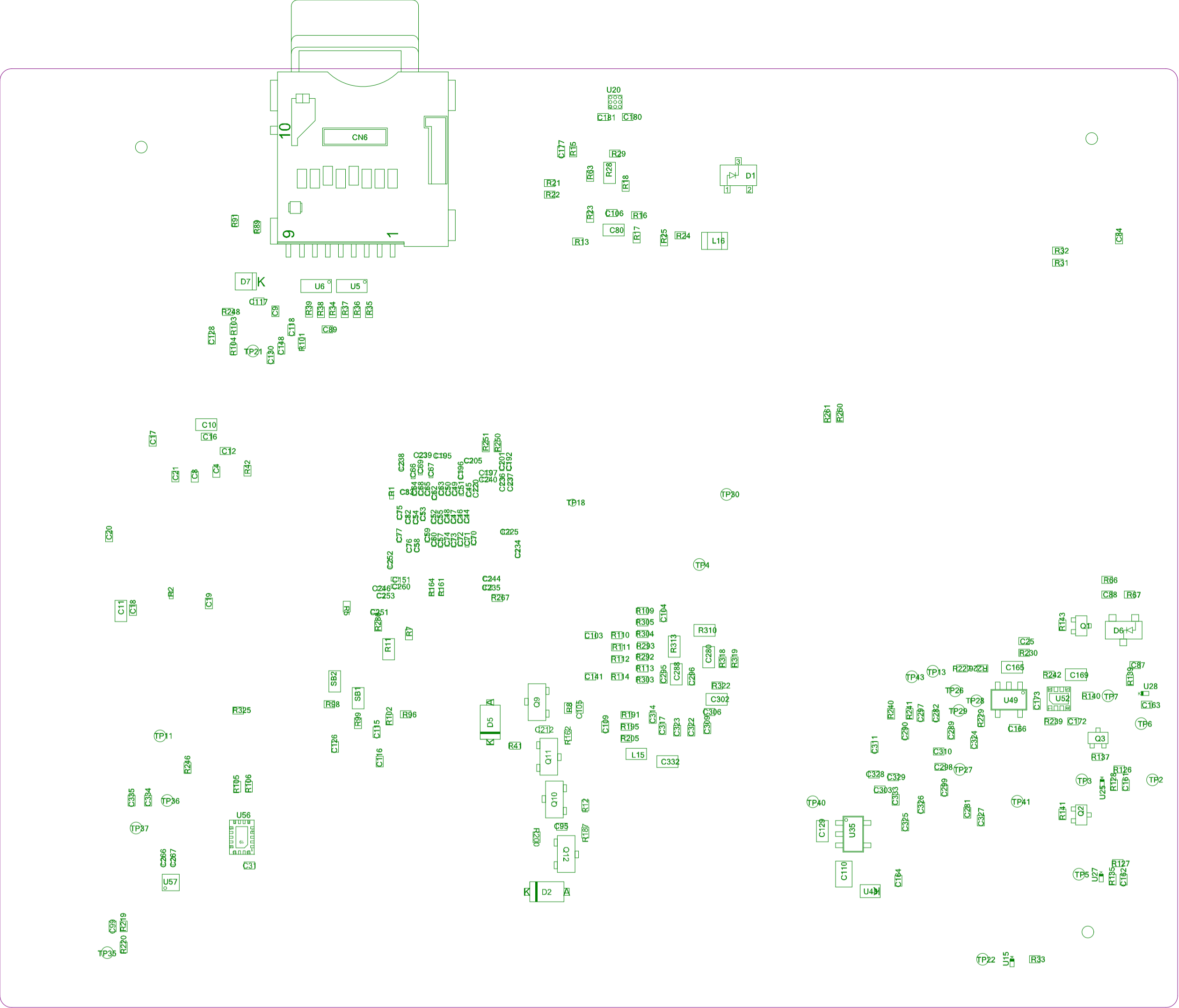


The logo consists of the letters 'S' and 'T' in a bold, stylized, italicized font. The letters are black and are contained within a white parallelogram with a black border. A registered trademark symbol (®) is located to the right of the parallelogram.



Project: STM32MP257-DK

Layer: Bottom Assembly

Variant: [No Variations]

Date: 03-JUN-24

Gerber:.GM15

Ref: MB1605

Rev: C

