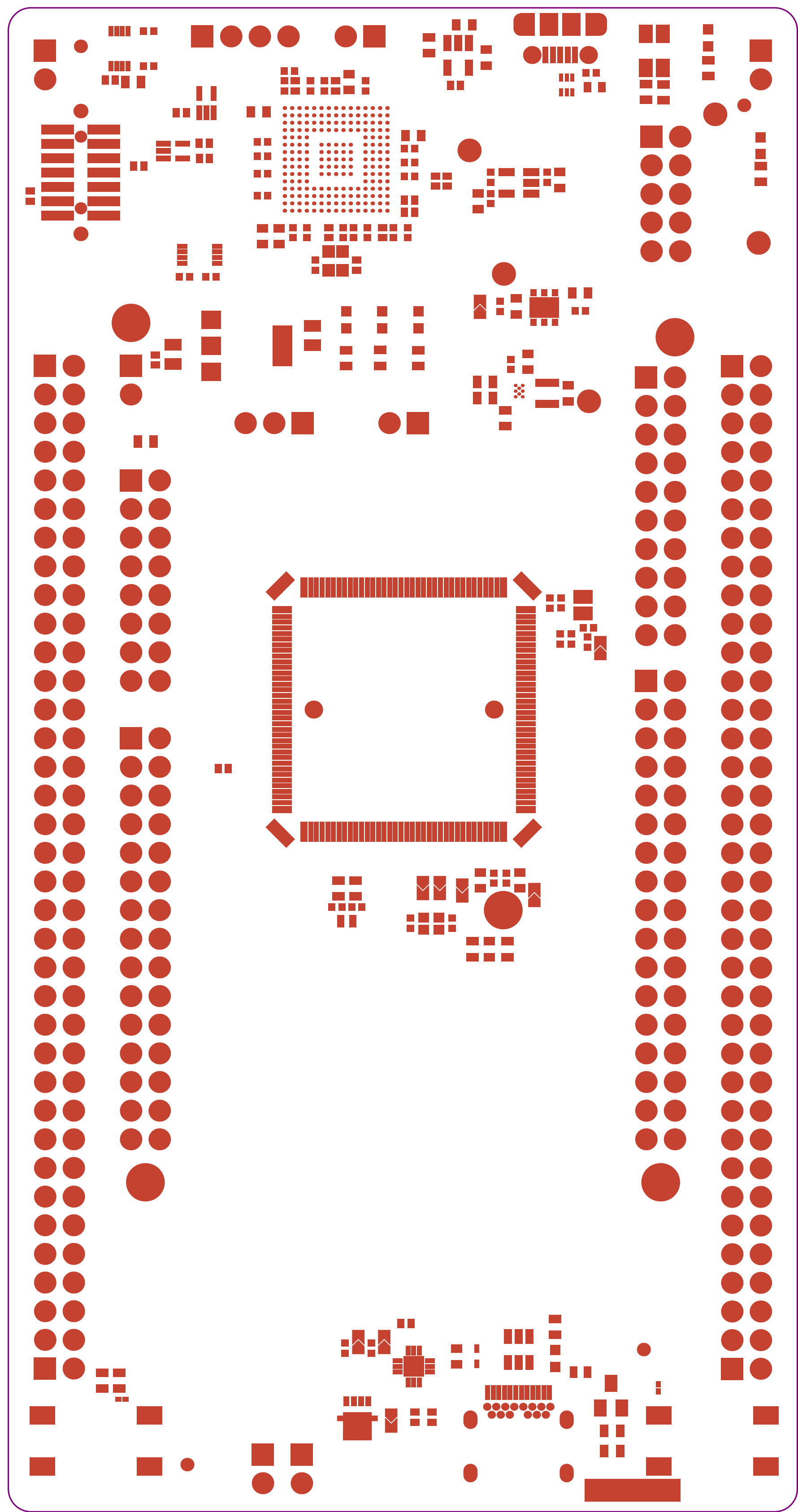
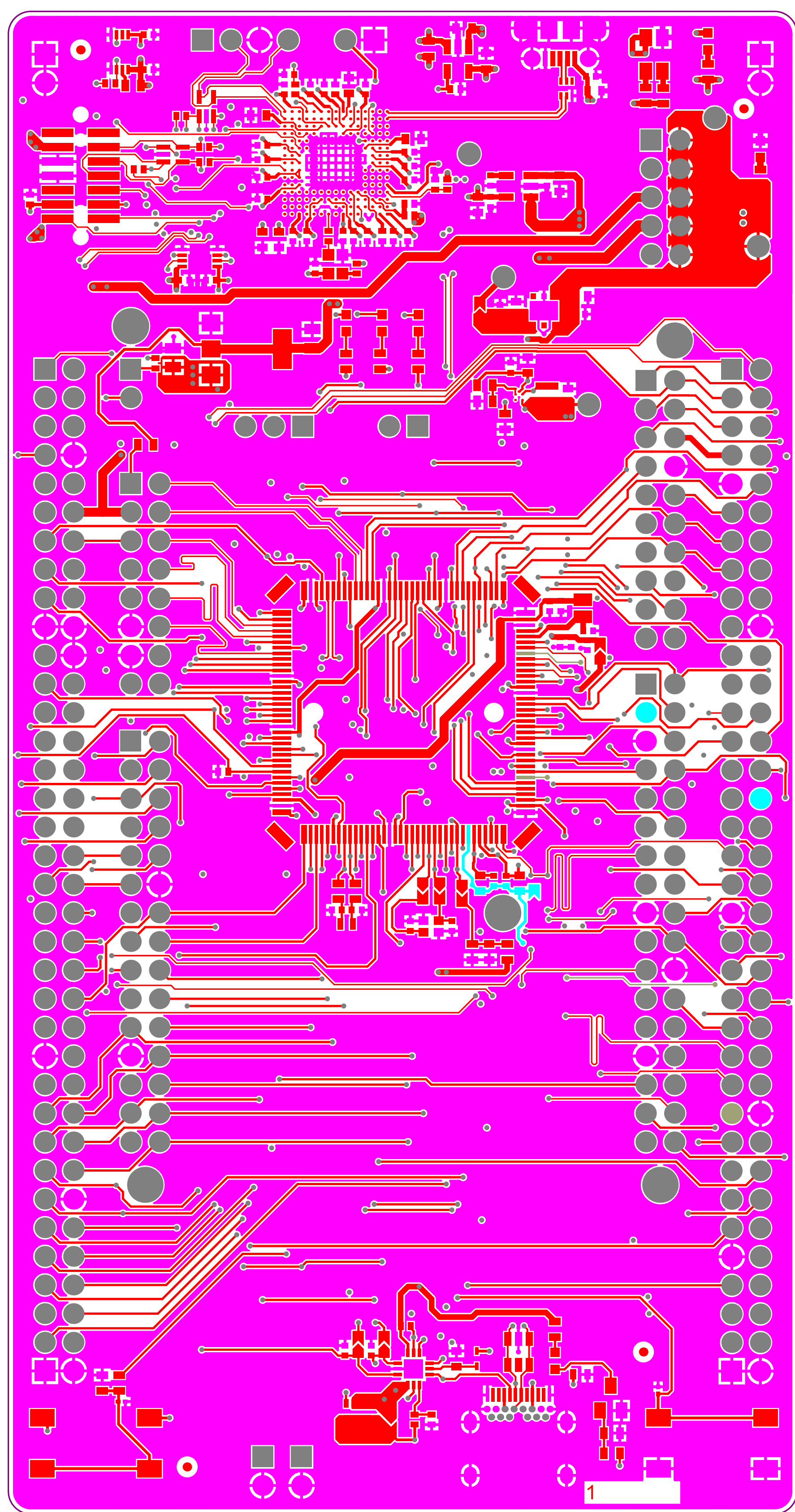
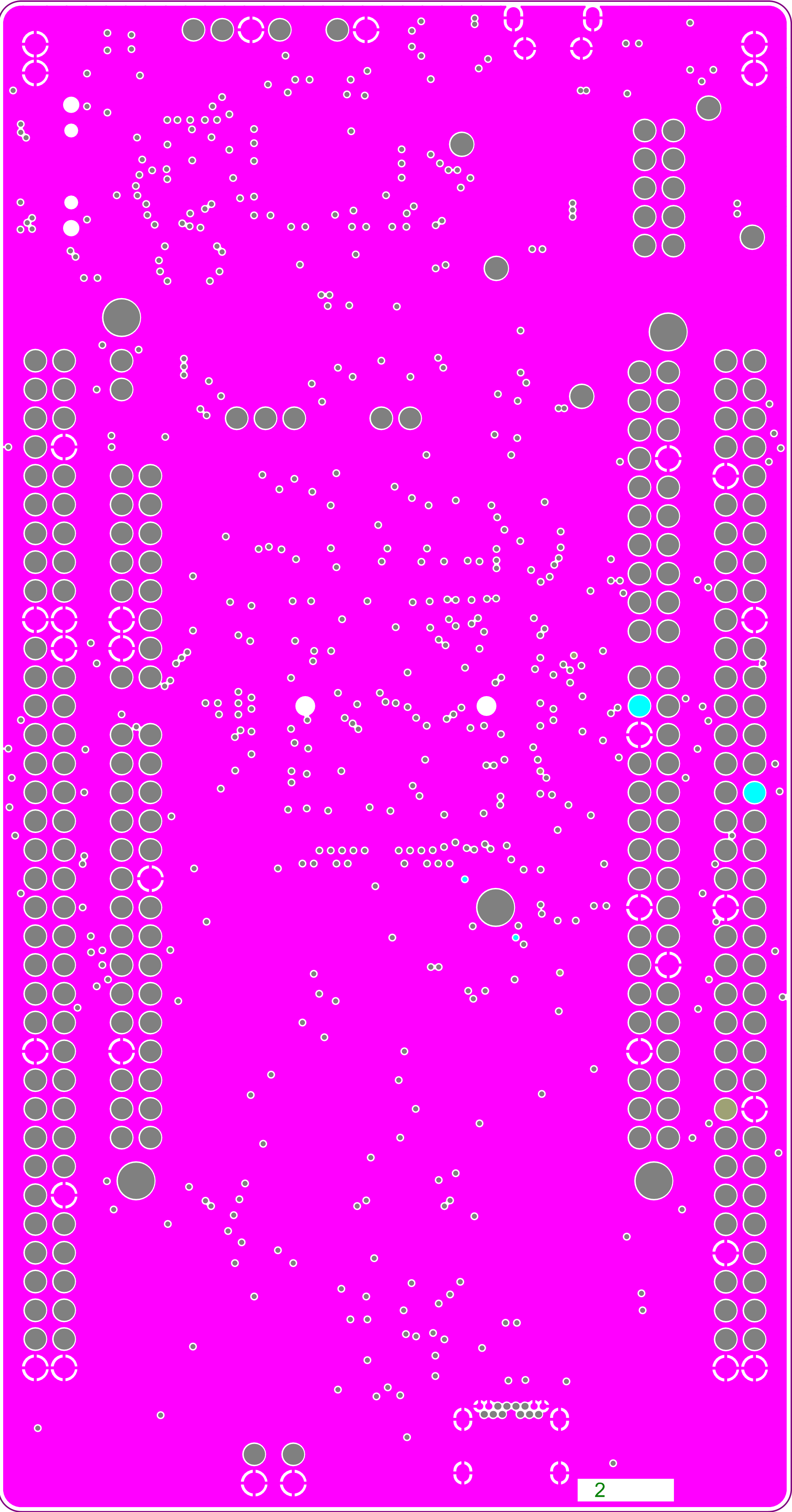




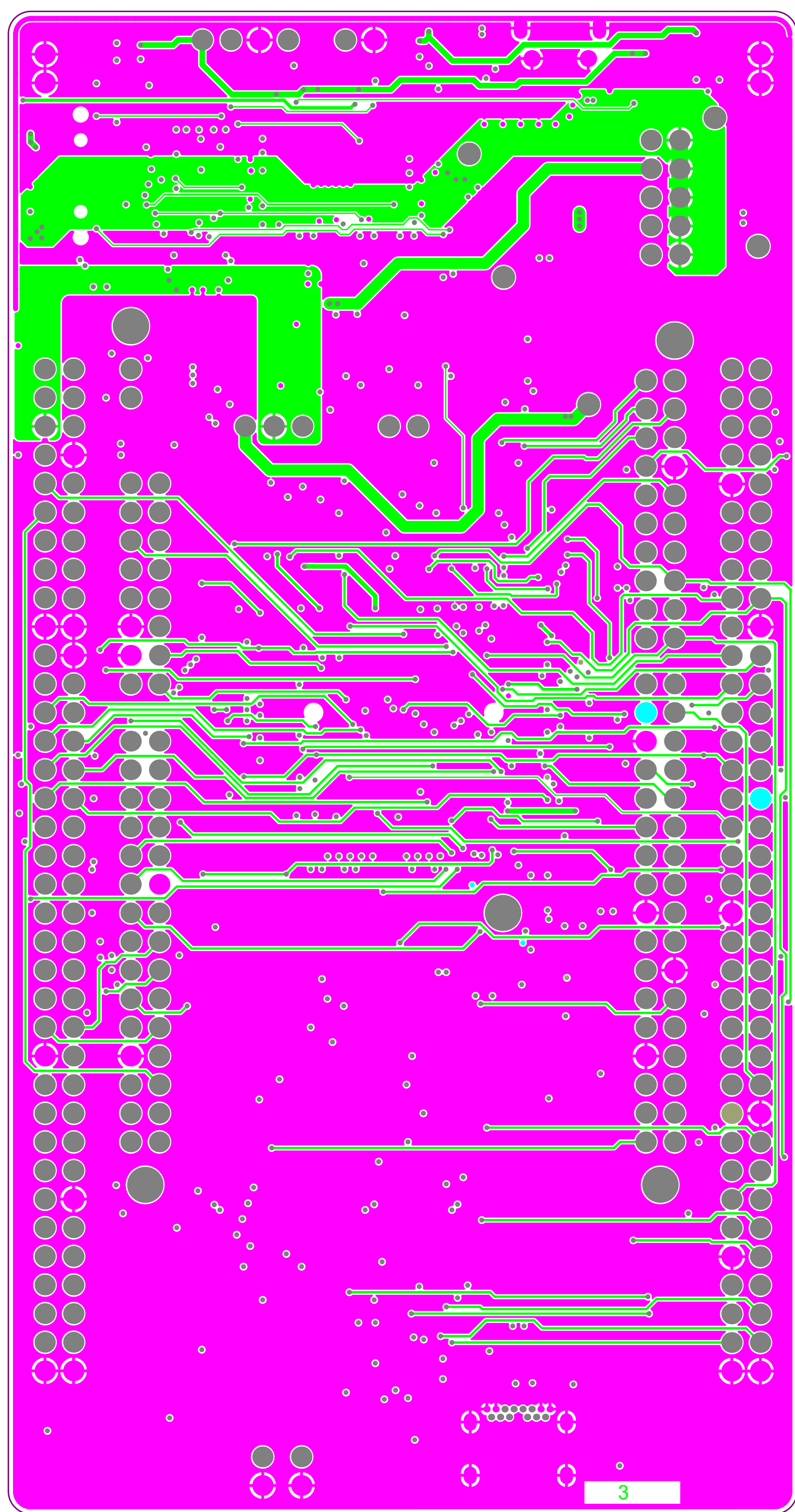
## Top Overlay

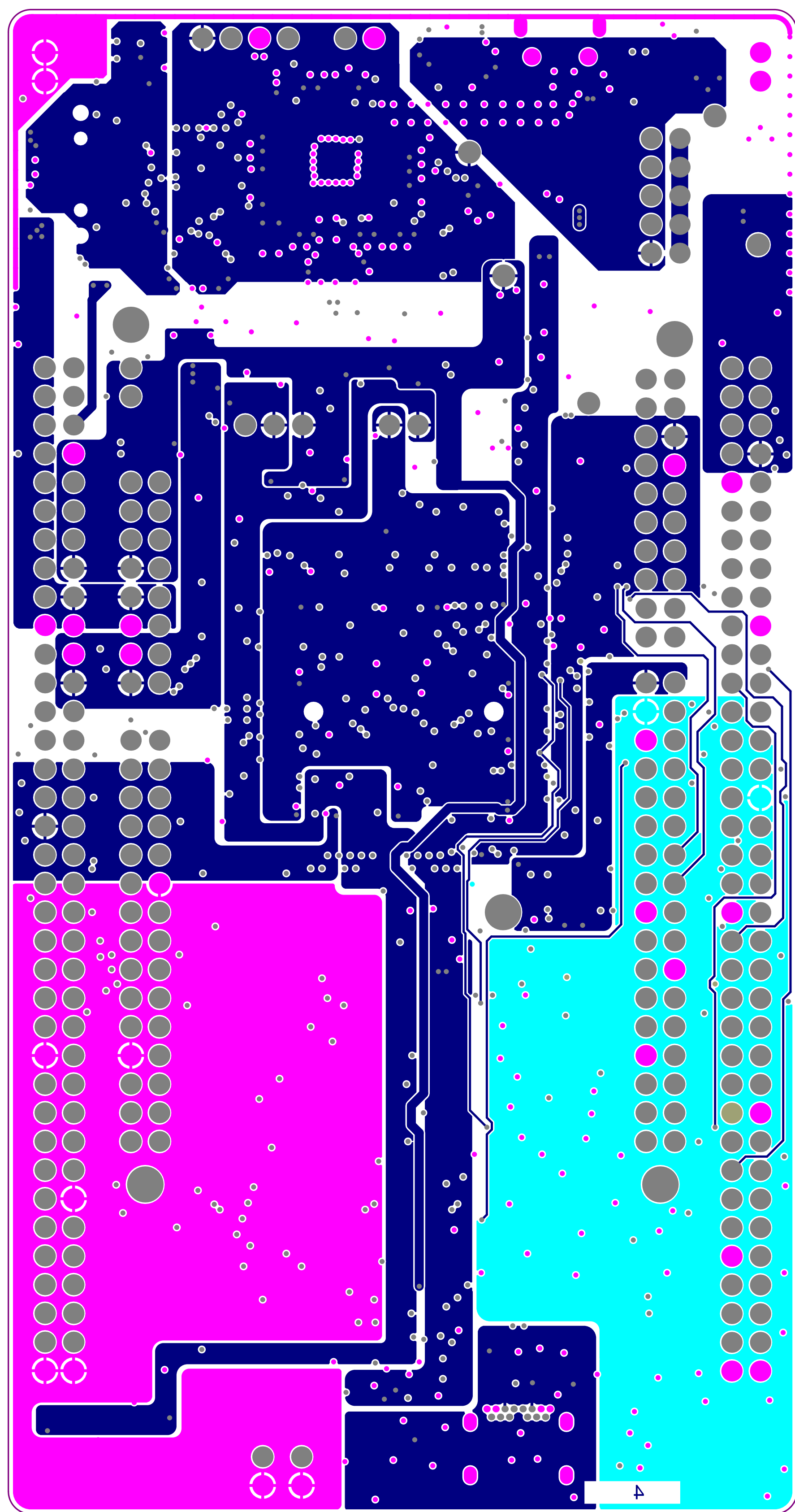


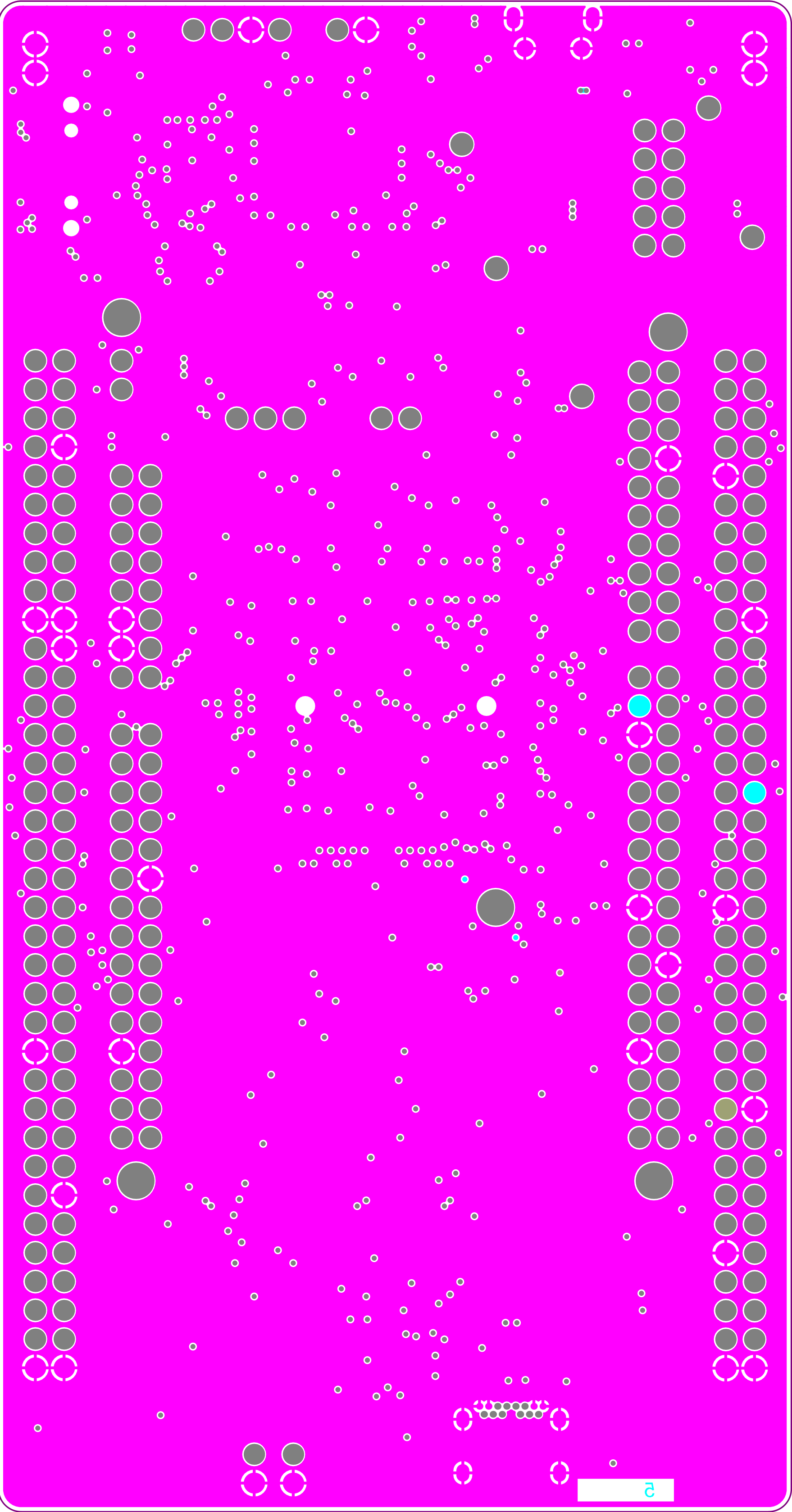






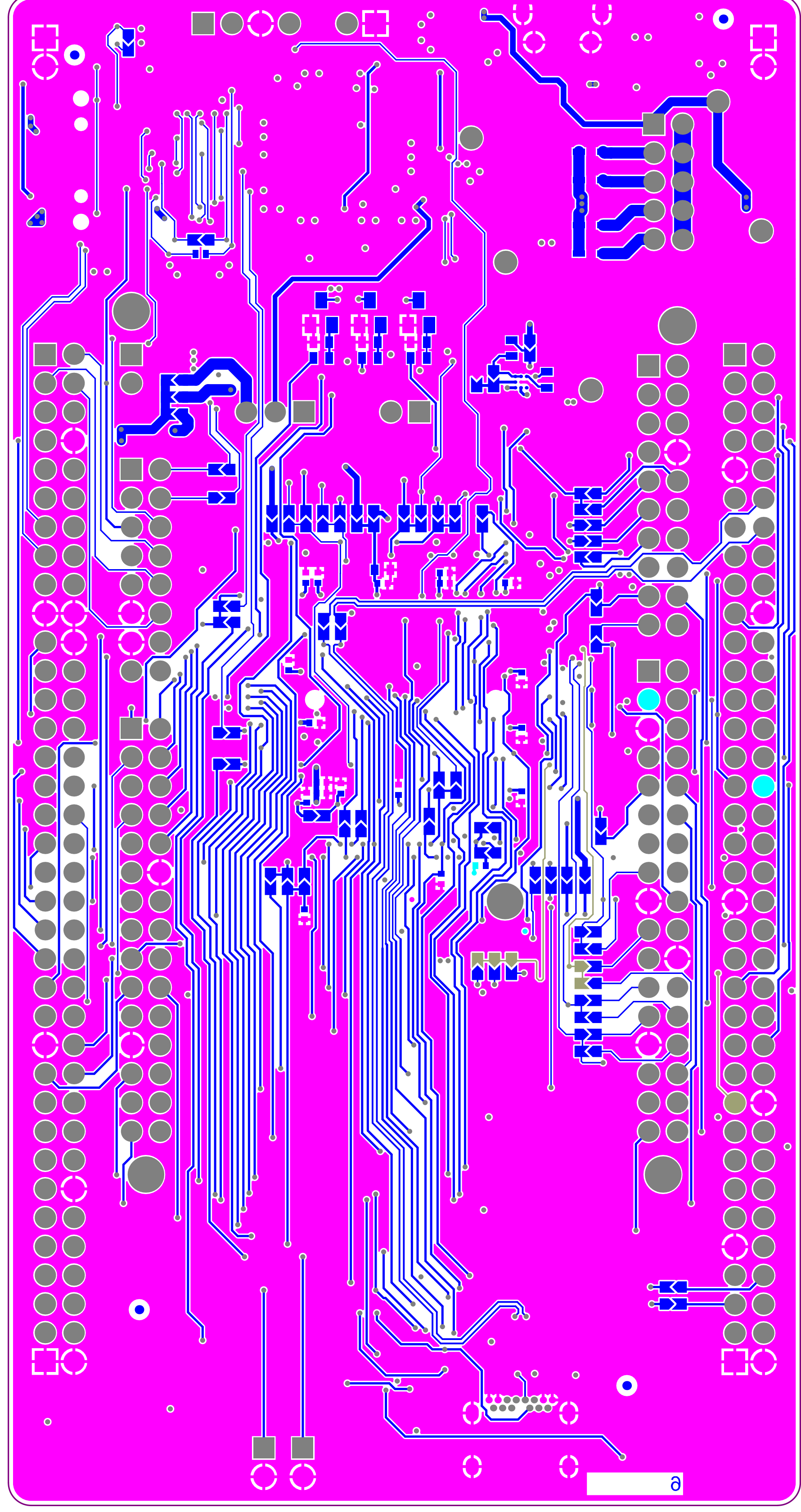




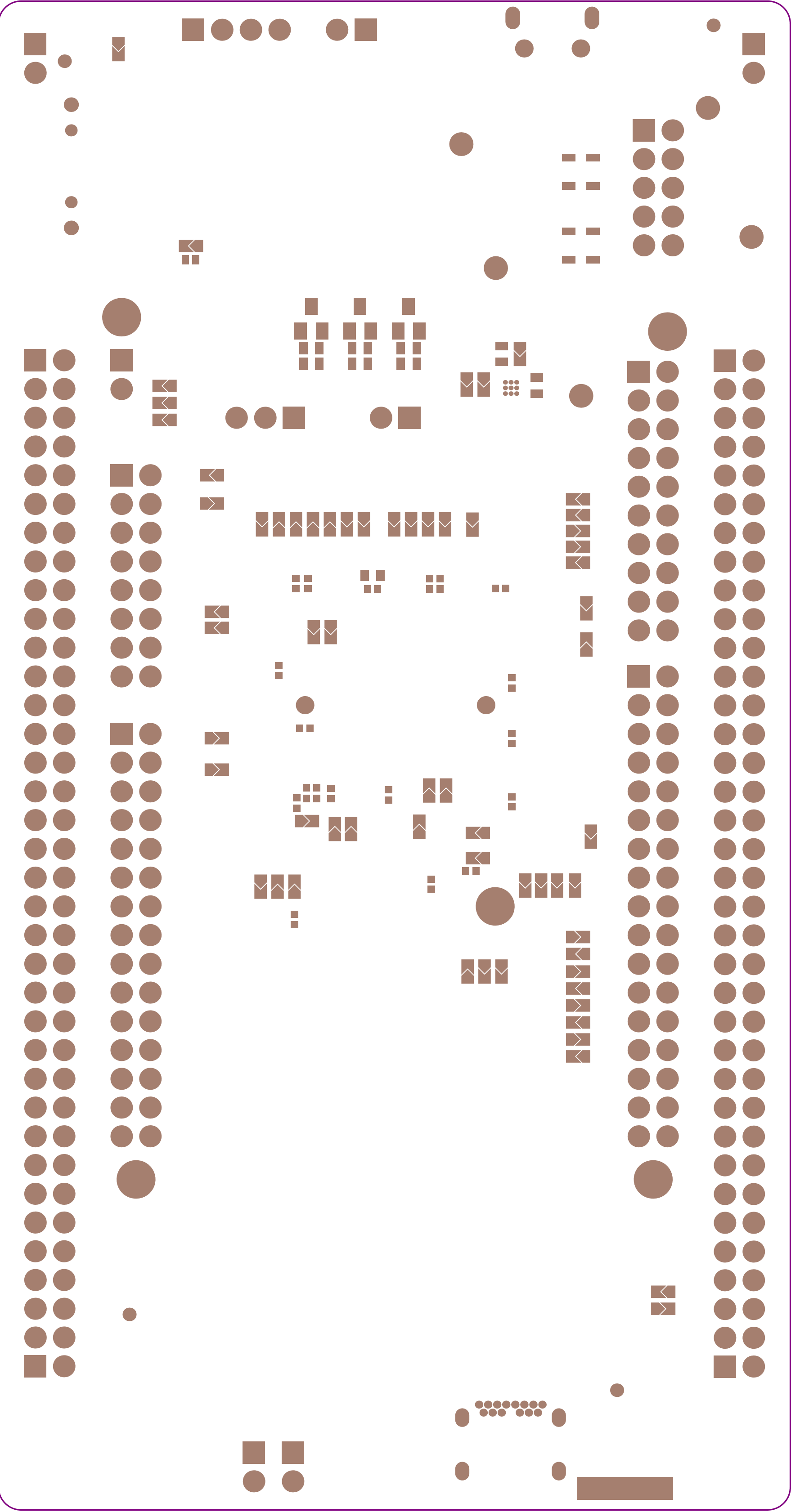


Bottom Layer

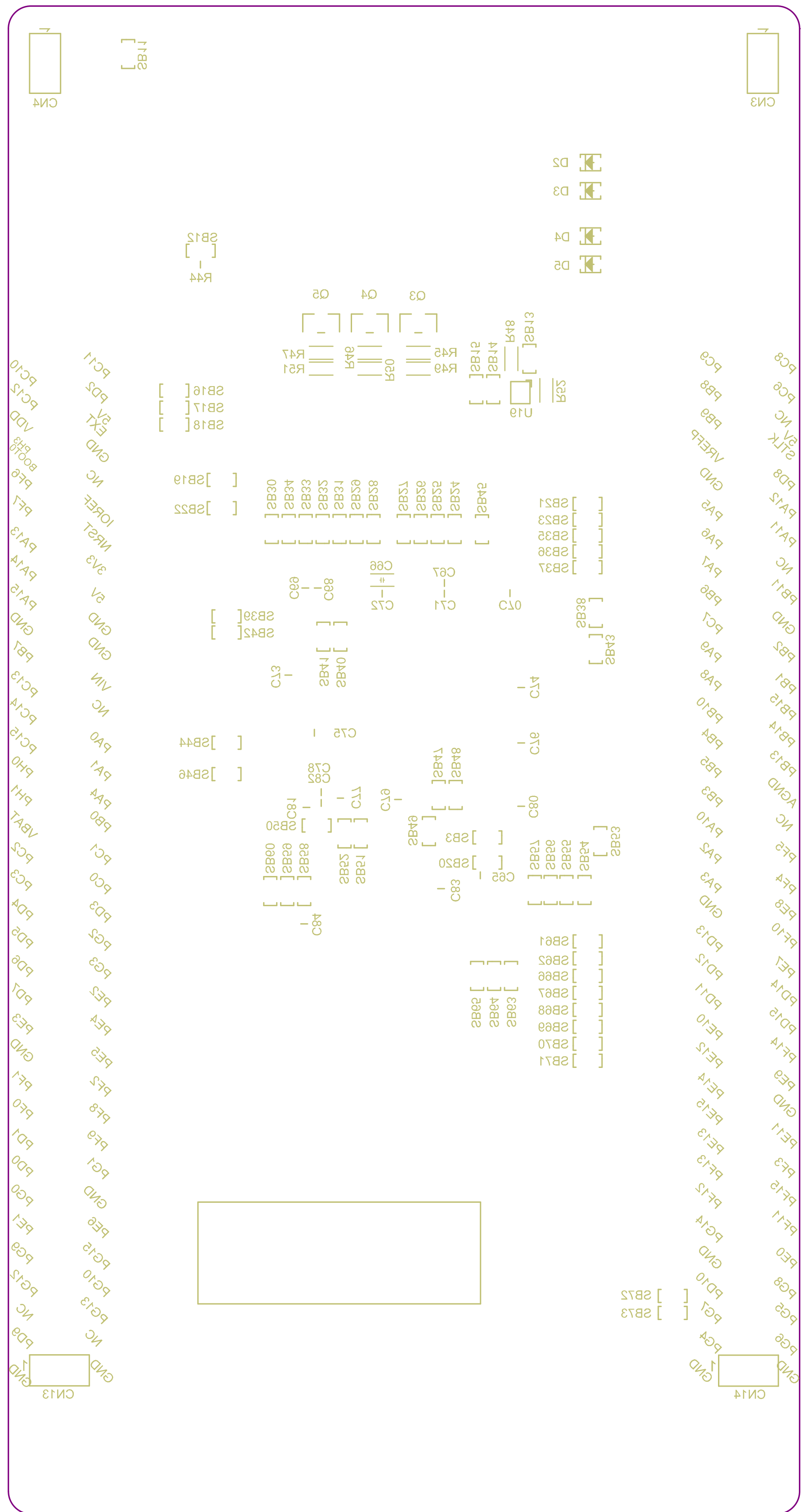
GBL











PCB SPECIFICATIONS :

A. MATERIAL :

FR-4

☐ TG-170

☒ TG-150

☐ TG-140

B. MATERIAL FAMILY :

N/A

C. SOLDERMASK COLOR :

☐ GREEN

☒ WHITE

☐ RED

☐ BLACK

D. SILKSCREEN COLOR :

☐ WHITE

☐ YELLOW

☐ BLACK

☒ Blue ink PANTONE 2955

E. SURFACE FINISH :

☒ ENIG

☐ IMMERSION SILVER

☐ IMMERSION TIN

☐ HASL

☐ HASL (PB-FREE)

☐ GOLDEN FINGER

F. IMPEDANCE CONTROL :

☐ NO

☒ YES (SEE IMPEDANCE TABLE FOR DETAIL INFORMATION)

G. THROUGH VIA :

PLUG THE VIAS WHICH ARE COVERED WITH SOLDERMASK ONE OR TWO SIDE.

PLUG MATERIAL : ☒ SOLDERMASK ☐ NON-CONDUCTIVE EPOXY.

H. STACK-UP :

SEE LAYER STACK-UP SEQUENCE FOR OVERALL THICKNESS.

Layer	Name	Material	Thickness	Constant	Board Layer Stack
	Top Overlay				
	Top Solder	Solder Resist	0,015mm	3,5	
1	Top Layer	Copper	0,042mm		
	Dielectric 1	FR-4	0,090mm	4,2	
2	Signal Layer 1	Copper	0,035mm		
	Dielectric 2		0,100mm	4,2	
3	Signal Layer 2	Copper	0,035mm		
	Dielectric 3		0,966mm	4,2	
4	Signal Layer 3	Copper	0,035mm		
	Dielectric 4		0,100mm	4,2	
5	Signal Layer 4	Copper	0,035mm		
	Dielectric 5		0,090mm	4,2	
6	Bottom Layer	Copper	0,042mm		
	Bottom Solder	Solder Resist	0,015mm	3,5	
	Bottom Overlay				

MINIMUM PARAMETERS

DEFAULT  
TRACKS : 0.127 mm  
GAPS : 0.127 mm

IMPEDANCE  
TRACKS : 0.102 mm

Symbol	Count	Hole Size	Plated	Drill Layer Pair	Via/Pad	Pad Shape	Hole Length	Routed Path Length
✕	2	0,600mm (23,62mil)	PTH	Top Layer - Bottom Layer	Pad	Rounded	1,300mm (51,18mil)	0,700mm (27,56mil)
⊕	2	0,900mm (35,43mil)	PTH	Top Layer - Bottom Layer	Pad	Rounded	-	-
✧	2	0,970mm (38,19mil)	NPTH	Top Layer - Bottom Layer	Pad	Rounded	-	-
⊗	2	1,190mm (46,85mil)	NPTH	Top Layer - Bottom Layer	Pad	Rounded	-	-
◇	2	1,500mm (59,06mil)	NPTH	Top Layer - Bottom Layer	Pad	Rounded	-	-
○	4	0,450mm (17,72mil)	PTH	Top Layer - Bottom Layer	Pad	Rounded	0,850mm (33,47mil)	0,400mm (15,75mil)
✕	5	3,200mm (125,98mil)	NPTH	Top Layer - Bottom Layer	Pad	Rounded	-	-
▣	14	0,400mm (15,75mil)	PTH	Top Layer - Bottom Layer	Pad	Rounded	-	-
✧	100	1,100mm (43,31mil)	PTH	Top Layer - Bottom Layer	Pad	Rounded	-	-
▽	180	1,000mm (39,37mil)	PTH	Top Layer - Bottom Layer	Pad	Rounded	-	-
□	875	0,200mm (7,87mil)	PTH	Top Layer - Bottom Layer	Via	Rounded	-	-
	1188 Total							

Slot definitions : Routed Path Length = Calculated from tool start centre position to tool end centre position.  
Hole Length = Routed Path Length + Tool Size = Slot length as defined in the PCB layout

