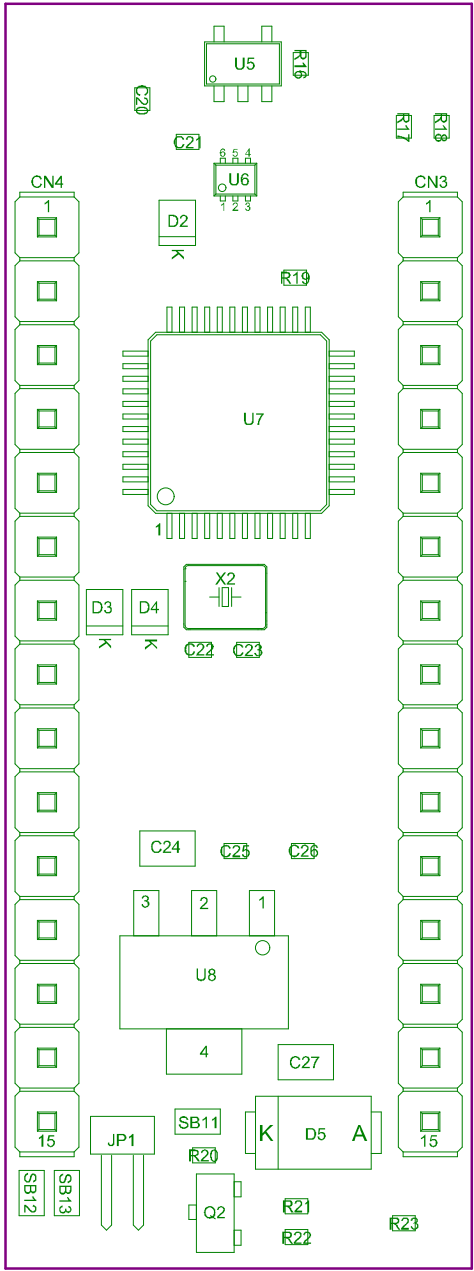


| | |
|----------------------------|---------------|
| Project: NUCLEO-32 STM32G0 | |
| Layer: M14-Top Assembly | Gerber: .GM14 |
| Variant: [No Variations] | Ref: MB1455 |
| Date: 18-FEB-19 | Rev: C |





Project: NUCLEO-32 STM32G0

Layer: M15-Bottom Assembly

Variant: [No Variations]

Date: 18-FEB-19

Gerber:.GM15

Ref: MB1455

Rev: C

