

THE COMPONENTS WITH PLATED THROUGH HOLE (PTH) MAY BE WELDED (CABLED) IN "PIN-IN-PASTE" MODE (IF NECESSARY)

PCB SPECIFICATIONS :

A. MATERIAL :

B. MATERIAL FAMILY :

C. SOLDERMASK COLOR :

D. SILKSCREEN COLOR :

E. SURFACE FINISH :

F. IMPEDANCE CONTROL :

G. THROUGH VIA :

H. STACK-UP :

FR-4

□ TG-170

☒ TG-150

□ TG-140

N/A

□ GREEN

☒ WHITE

□ RED

□ BLACK

□ WHITE

□ YELLOW

□ BLACK

☒ Blue ink PANTONE 2955

☒ ENIG

□ IMMERSION SILVER

□ IMMERSION TIN

□ HASL

□ HASL (PB-FREE)

□ GOLDEN FINGER

□ NO

☒ YES (SEE IMPEDANCE TABLE FOR DETAIL INFORMATION)

PLUG THE VIAS WHICH ARE COVERED WITH SOLDERMASK ONE OR TWO SIDE.
PLUG MATERIAL : ☒ SOLDERMASK □ NON-CONDUCTIVE EPOXY.

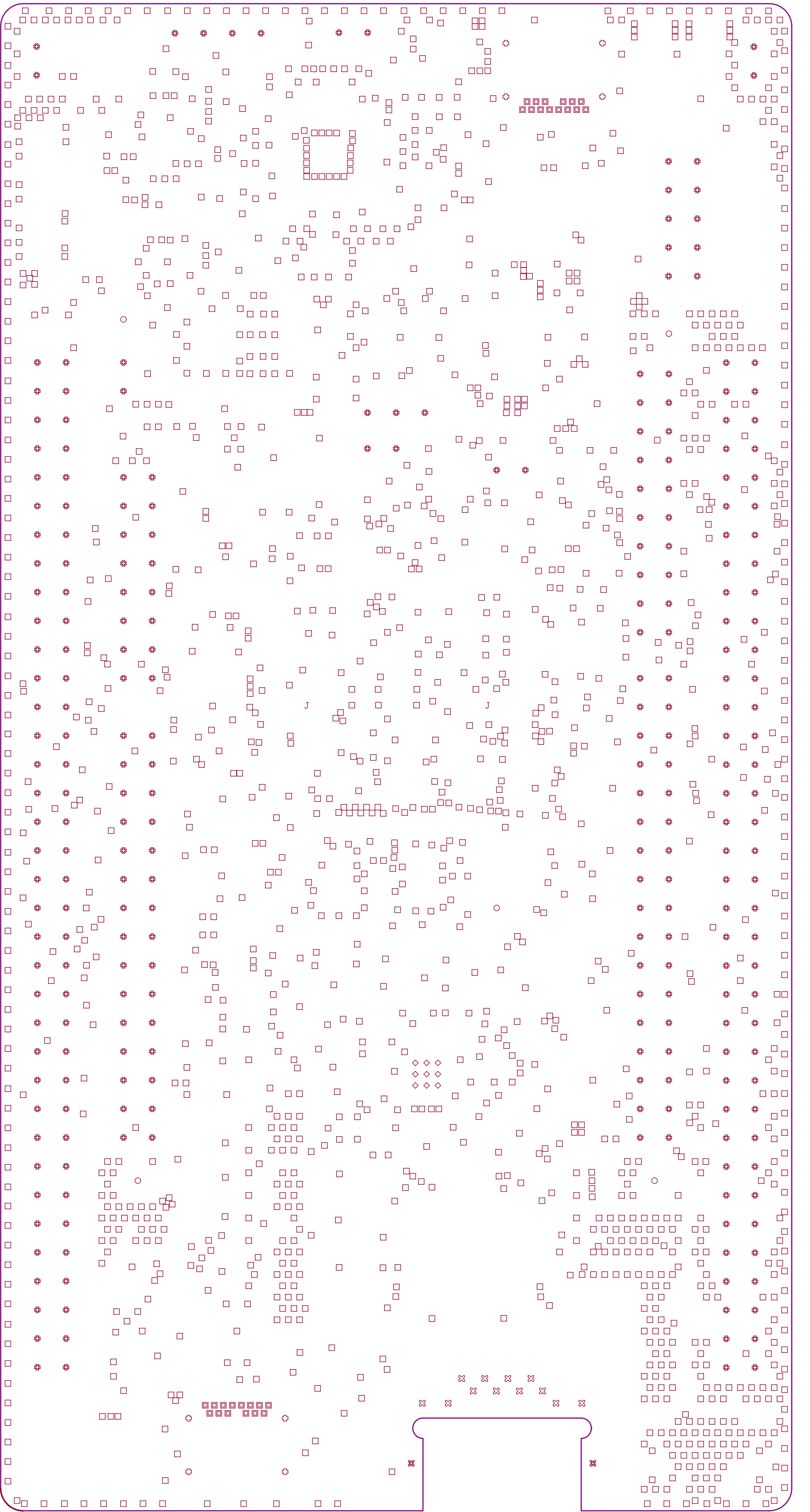
SEE LAYER STACK-UP SEQUENCE FOR OVERALL THICKNESS.

PCB : TYPE 3

ASPECT-RATIO, AXE Z :
6:1 to 8:1
LEVEL "B"

MINIMUM PARAMETERS

DEFAULT
TRACKS : 0.120mm
GAPS : 0.120mm



Layer	Name	Material	Thickness	Constant	Board Layer Stack
	Top Overlay				
	Top Solder	Solder Resist	0,015mm	3.5	
1	Top Layer		0,042mm		
	Dielectric 1	FR-4	0,099mm	4.2	
2	Signal Layer 1		0,035mm		
	Dielectric 2		0,102mm	4.2	
3	Signal Layer 2		0,035mm		
	Dielectric 3		0,946mm	4.2	
4	Signal Layer 3		0,035mm		
	Dielectric 4		0,102mm	4.2	
5	Signal Layer 4		0,035mm		
	Dielectric 5		0,099mm	4.2	
6	Bottom Layer		0,042mm		
	Bottom Solder	Solder Resist	0,015mm	3.5	
	Bottom Overlay				

Symbol	Count	Hole Size	Plated	Hole Type	Drill Layer Pair	Hole Length	Routed Path Length
□	1737	0,200mm (7,87mil)	PTH	Round	Top Layer - Bottom Layer	-	-
◇	9	0,300mm (11,81mil)	PTH	Round	Top Layer - Bottom Layer	-	-
▣	28	0,400mm (15,75mil)	PTH	Round	Top Layer - Bottom Layer	-	-
⊕	8	0,450mm (17,72mil)	PTH	Slot	Top Layer - Bottom Layer	0,850mm (33,47mil)	0,400mm (15,75mil)
⊗	12	0,700mm (27,56mil)	PTH	Round	Top Layer - Bottom Layer	-	-
⊗	2	0,700mm (27,56mil)	PTH	Slot	Top Layer - Bottom Layer	2,200mm (86,61mil)	1,500mm (59,06mil)
⊕	273	1,000mm (39,37mil)	PTH	Round	Top Layer - Bottom Layer	-	-
J	2	1,500mm (59,06mil)	NPTH	Round	Top Layer - Bottom Layer	-	-
○	5	3,200mm (125,98mil)	NPTH	Round	Top Layer - Bottom Layer	-	-
	2076 Total						

Slot definitions : Routed Path Length = Calculated from tool start centre position to tool end centre position.
Hole Length = Routed Path Length + Tool Size = Slot length as defined in the PCB layout