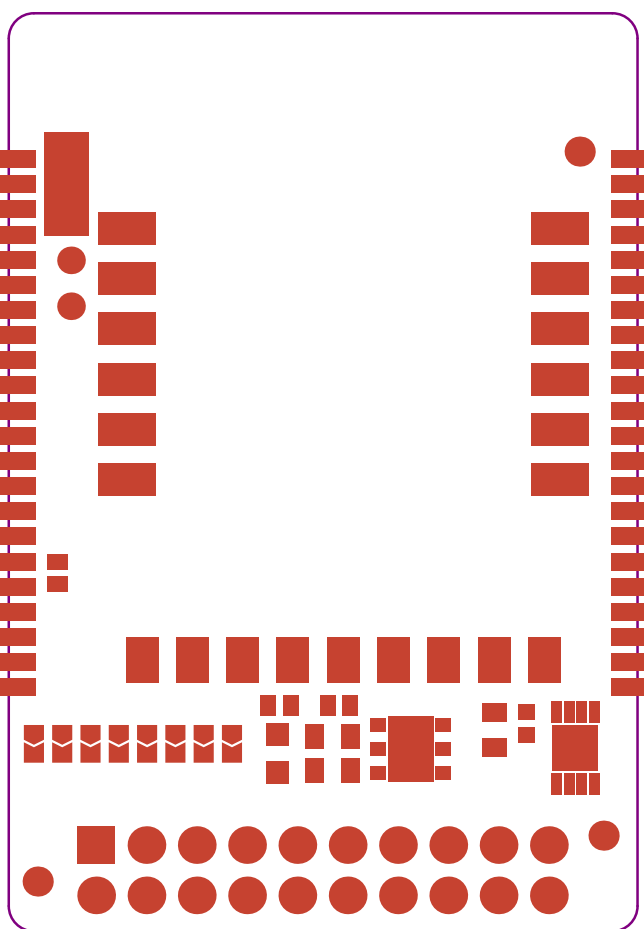


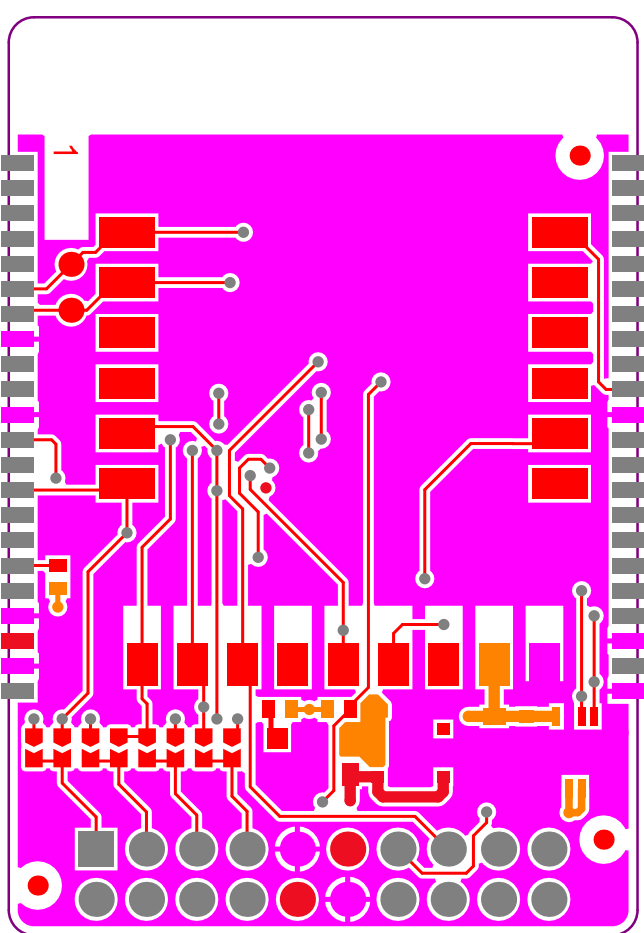
Top Overlay

.GTO



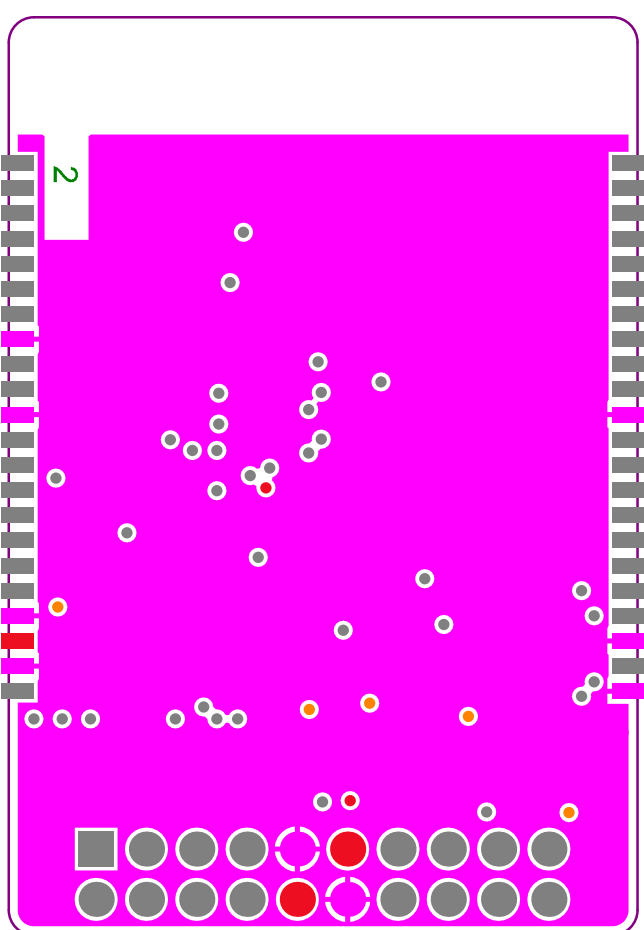
Top Solder

.GTS



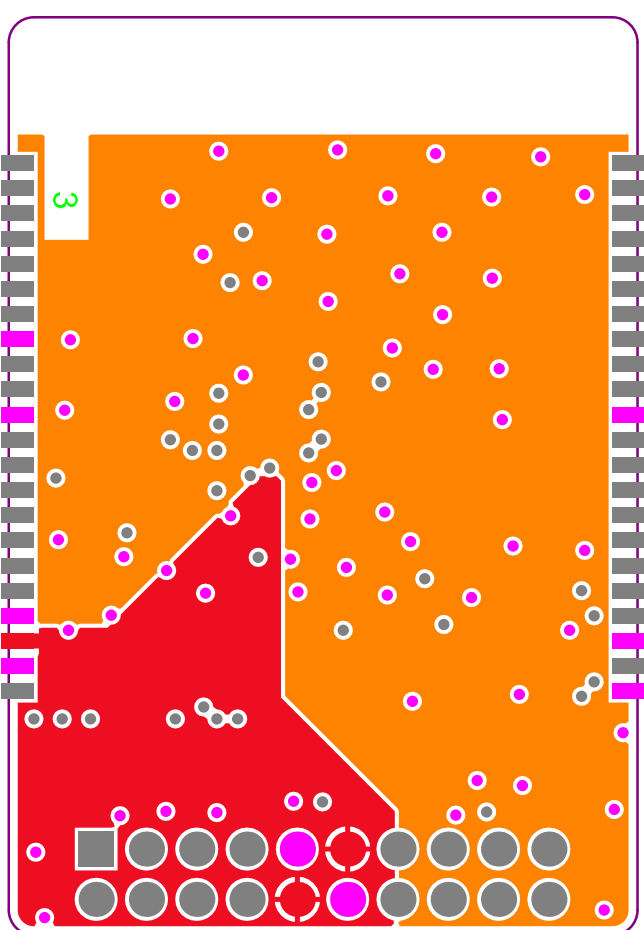
Top Layer

.GTL



Signal Layer 1

.G1

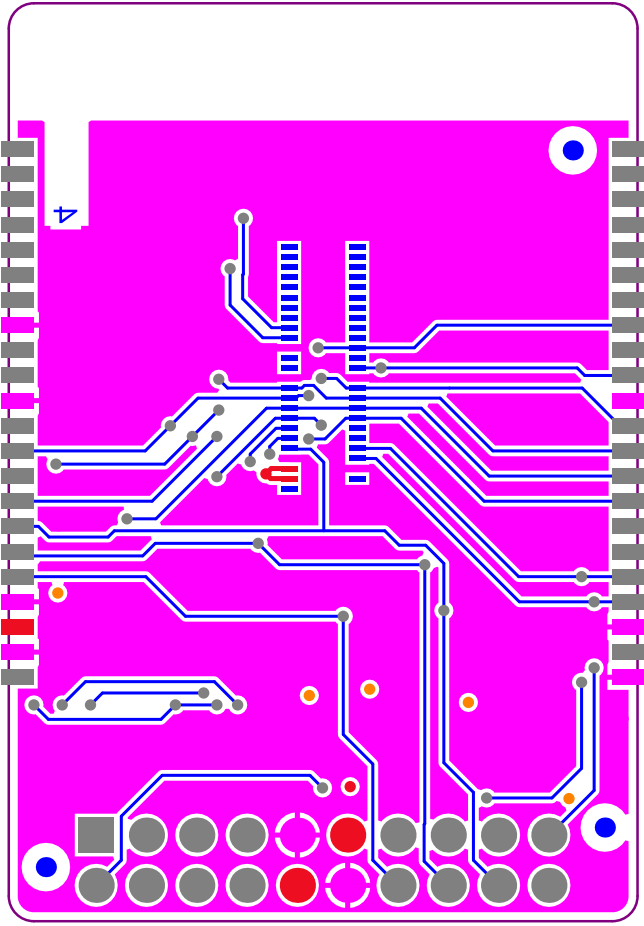


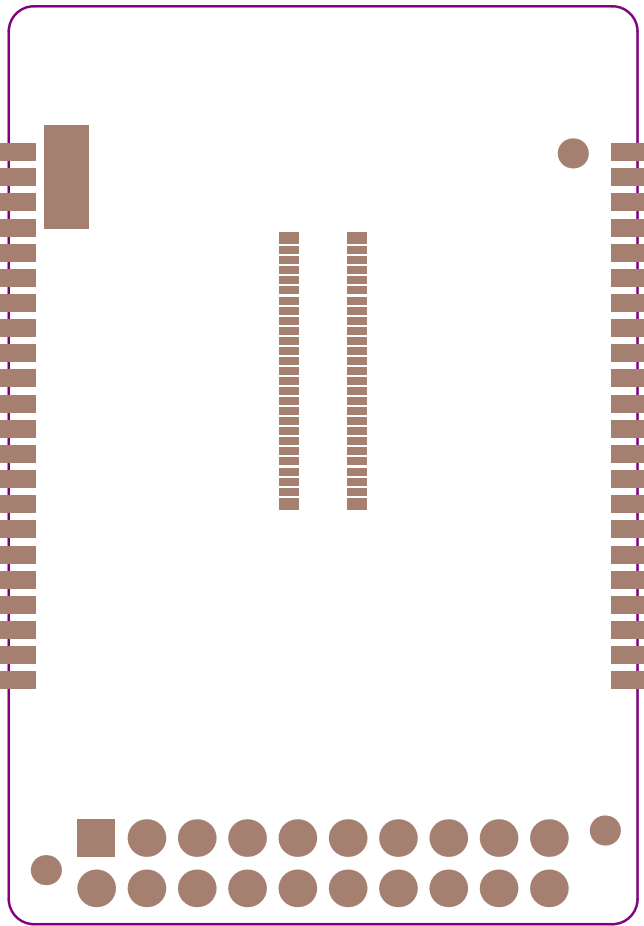
Signal Layer 2

.G2

Bottom Layer

.GBL





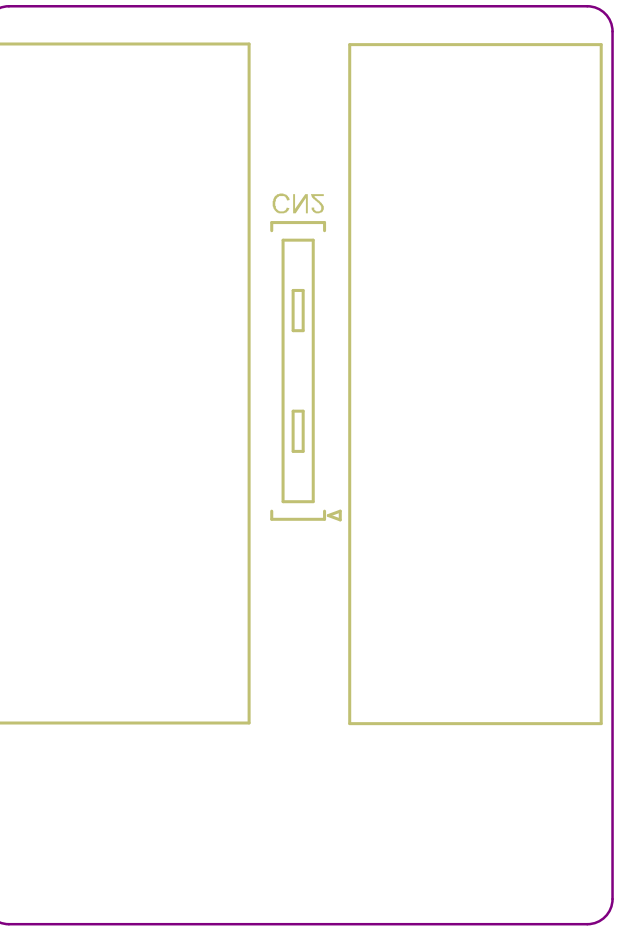
.GB2

Bottom Solder



Bottom Overlay

.GBO





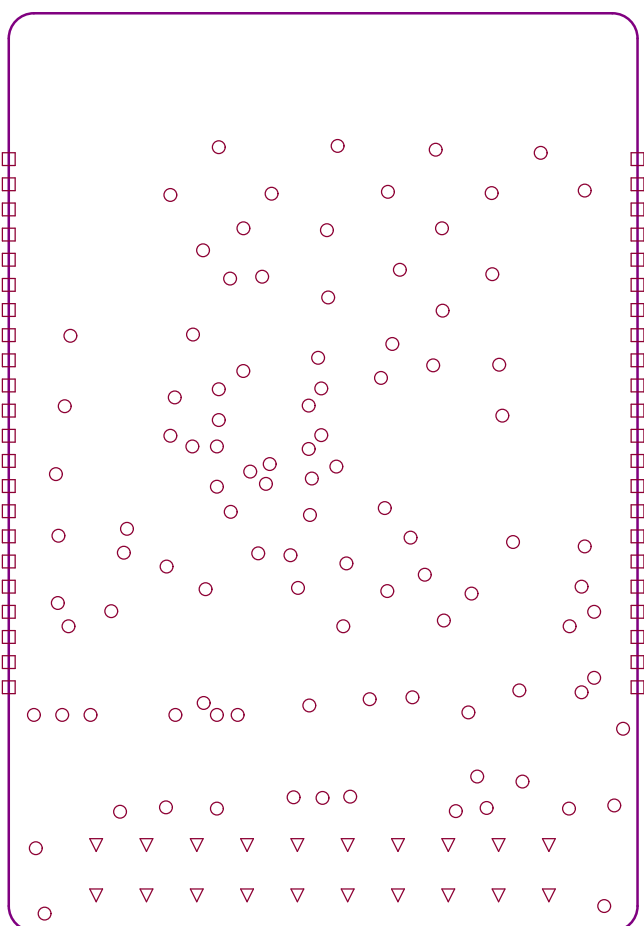
## PCB SPECIFICATIONS :

A. MATERIAL :	FR-4	<input type="checkbox"/> TG-170	<input checked="" type="checkbox"/> TG-150	<input type="checkbox"/> TG-140
B. MATERIAL FAMILY :	N/A			
C. SOLDERMASK COLOR :	<input type="checkbox"/> GREEN	<input checked="" type="checkbox"/> BLUE	<input type="checkbox"/> RED	<input type="checkbox"/> BLACK
D. SILKSCREEN COLOR :	<input checked="" type="checkbox"/> WHITE	<input type="checkbox"/> YELLOW	<input type="checkbox"/> BLACK	
E. SURFACE FINISH :	<input checked="" type="checkbox"/> ENIG	<input type="checkbox"/> IMMERSION SILVER	<input type="checkbox"/> IMMERSION TIN	
	<input type="checkbox"/> HASL	<input type="checkbox"/> HASL (PB-FREE)	<input type="checkbox"/> GOLDEN FINGER	
<input type="checkbox"/> F. IMPEDANCE CONTROL :	<input type="checkbox"/> NO	<input checked="" type="checkbox"/> YES (SEE IMPEDANCE TABLE FOR DETAIL INFORMATION)		
G. THROUGH VIA :	PLUG THE VIAS WHICH ARE COVERED WITH SOLDERMASK ONE OR TWO SIDE.			
	PLUG MATERIAL : <input checked="" type="checkbox"/> SOLDERMASK <input type="checkbox"/> NON-CONDUCTIVE EPOXY.			
<input type="checkbox"/> H. STACK-UP :	SEE LAYER STACK-UP SEQUENCE FOR OVERALL THICKNESS.			

Layer	Name	Material	Thickness	Constant	Board Layer Stack
1	Top Overlay				
2	Top Solder	Solder Resist	0,020mm	3,5	
3	Top Layer	Copper	0,035mm		
4	Dielectric 1	FR-4	0,106mm	4,1	
5	Signal Layer 1	Copper	0,035mm		
6	Dielectric 2		0,848mm	4,25	
7	Signal Layer 2	Copper	0,035mm		
8	Dielectric 3		0,106mm	4,25	
9	Bottom Layer	Copper	0,035mm		
10	Bottom Solder	Solder Resist	0,020mm	3,5	
11	Bottom Overlay				

## MINIMUN PARAMETERS

DEFAULT  
TRACKS : 0.120mm  
GAPS : 0.120mm



## Drill Drawing

**.DRL**

Symbol	Count	Hole Size	Plated	Hole Type	Drill Layer Pair	Via/Pad	Hole Length	Routed Path Length
○	102	0,200mm (7,87mil)	PTH	Round	Top Layer - Bottom Layer	Via	-	-
□	44	0,600mm (23,62mil)	PTH	Round	Top Layer - Bottom Layer	Pad	-	-
▽	20	0,900mm (35,43mil)	PTH	Round	Top Layer - Bottom Layer	Pad	-	-
	166 Total							