
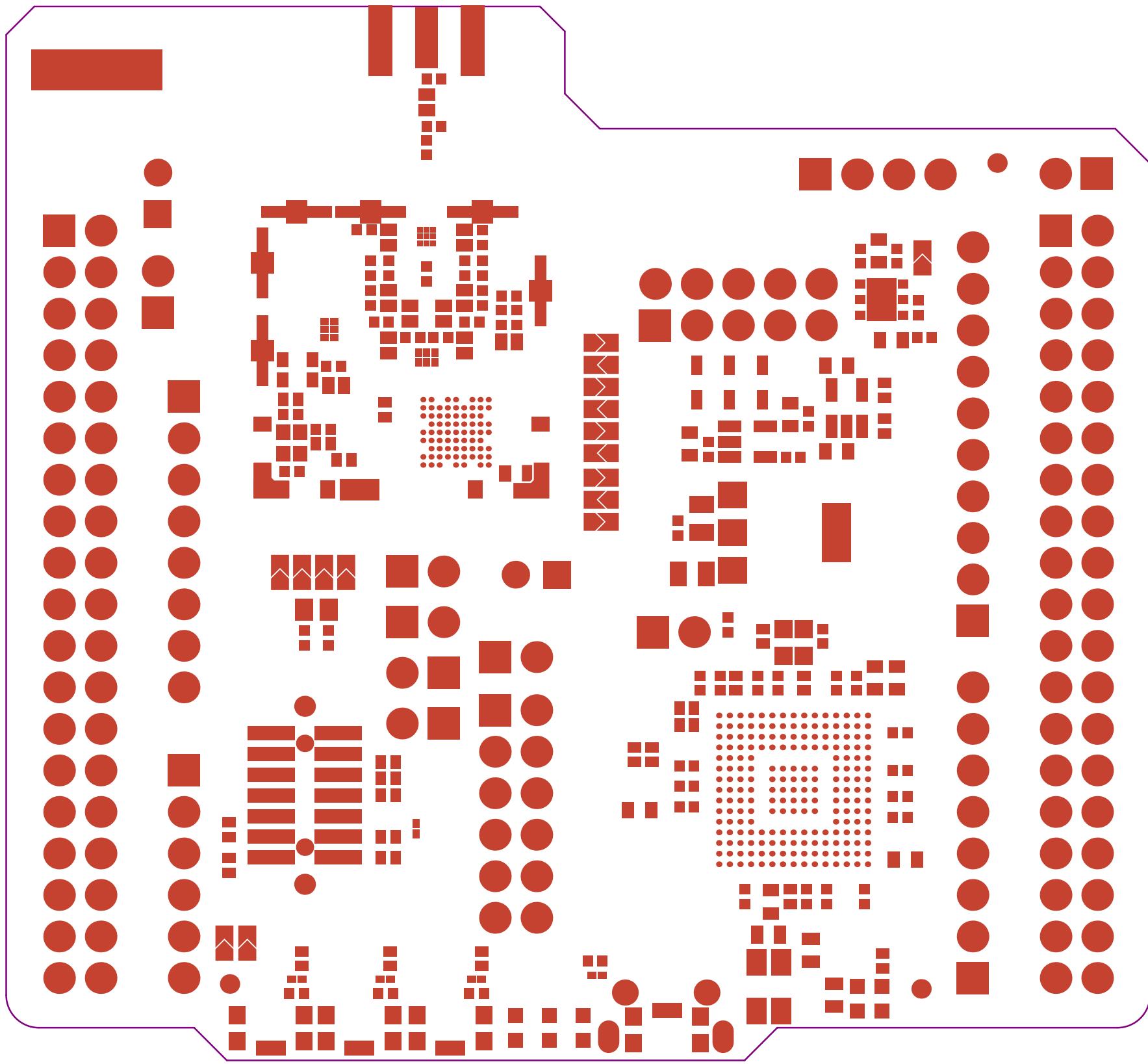

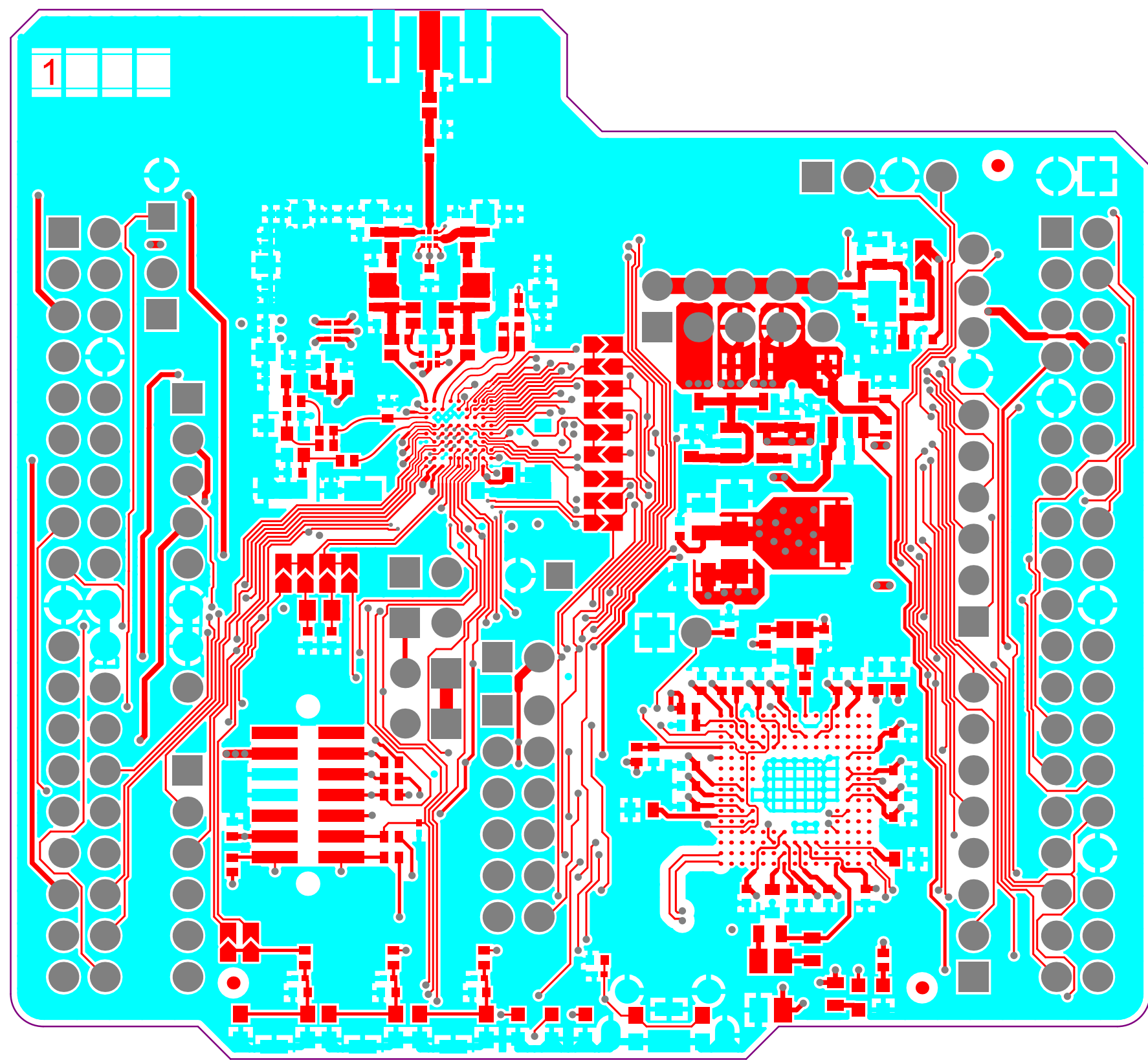



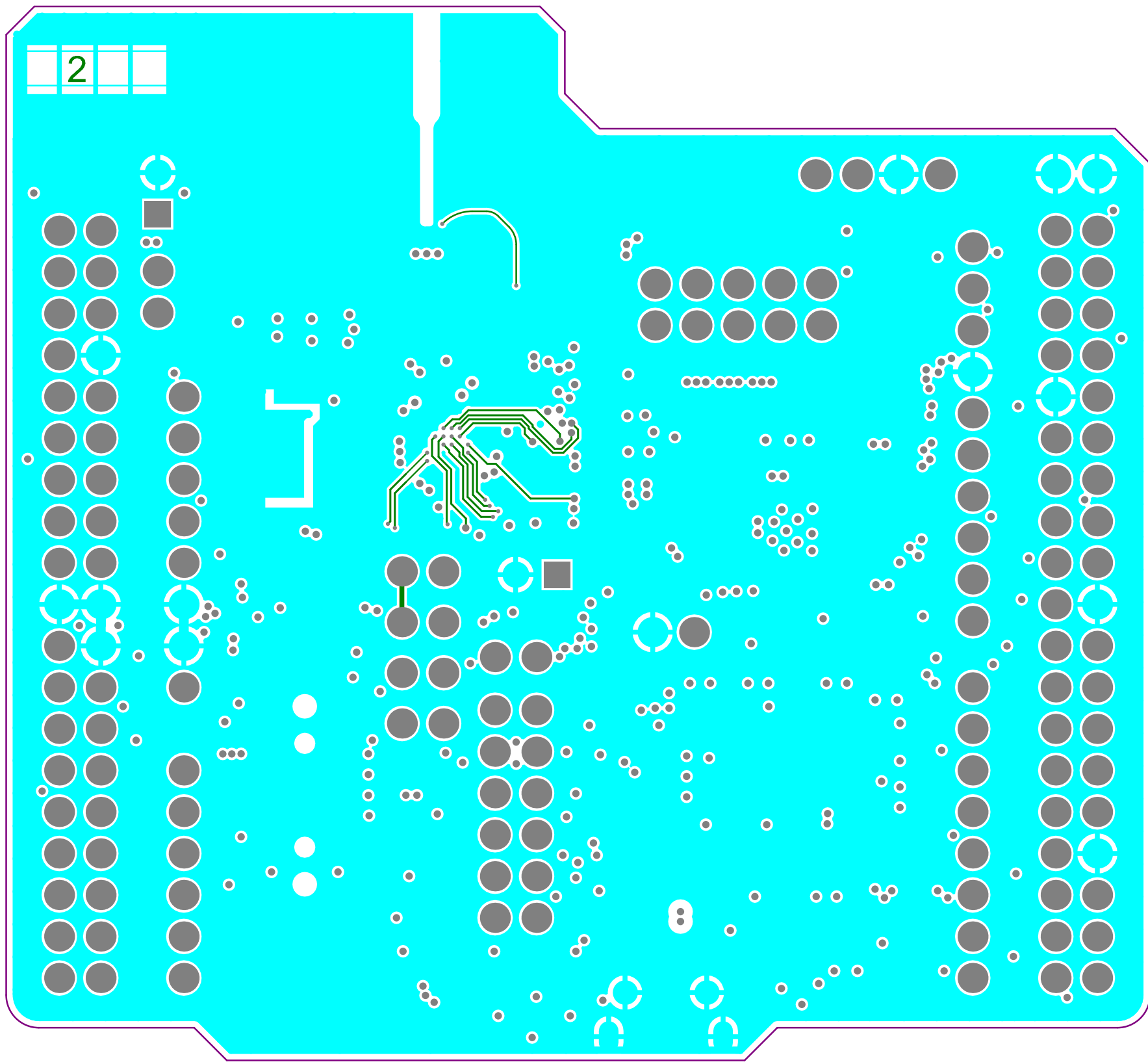
| | | |
|---------------------------|---------------------|--|
| Project: NUCLEO-WL5JC | |  |
| Layer: Top Overlay | Gerber: .GTO | |
| Variant: [No Variations] | Ref: MB1389 | |
| Date: 2020-September-09 | Rev: E | |




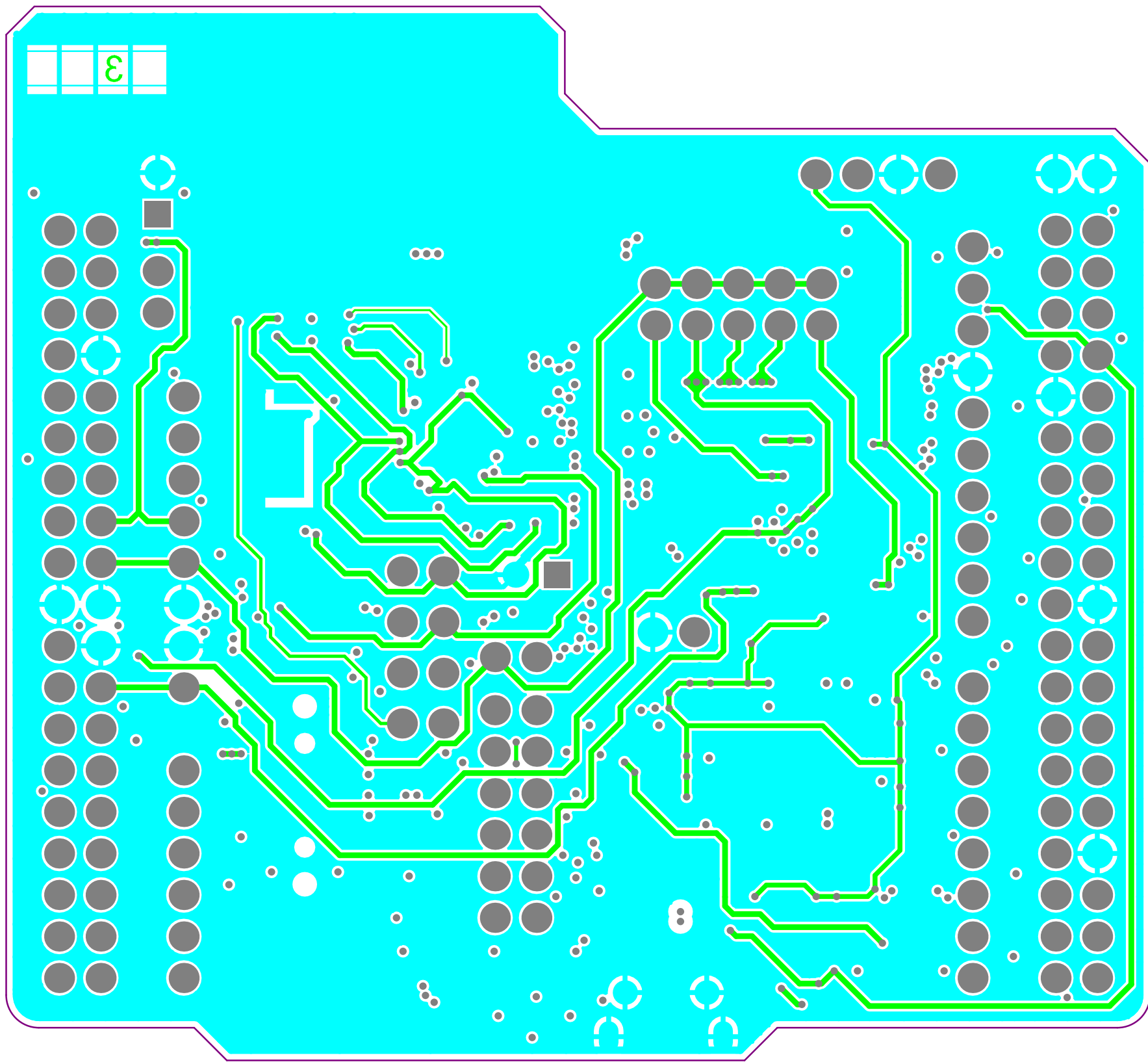
| | | |
|--------------------------|---------------------|--|
| Project: NUCLEO-WL5JC | |  |
| Layer: Top Solder | Gerber: .GTS | |
| Variant: [No Variations] | Ref: MB1389 | |
| Date: 2020-September-09 | Rev: E | |




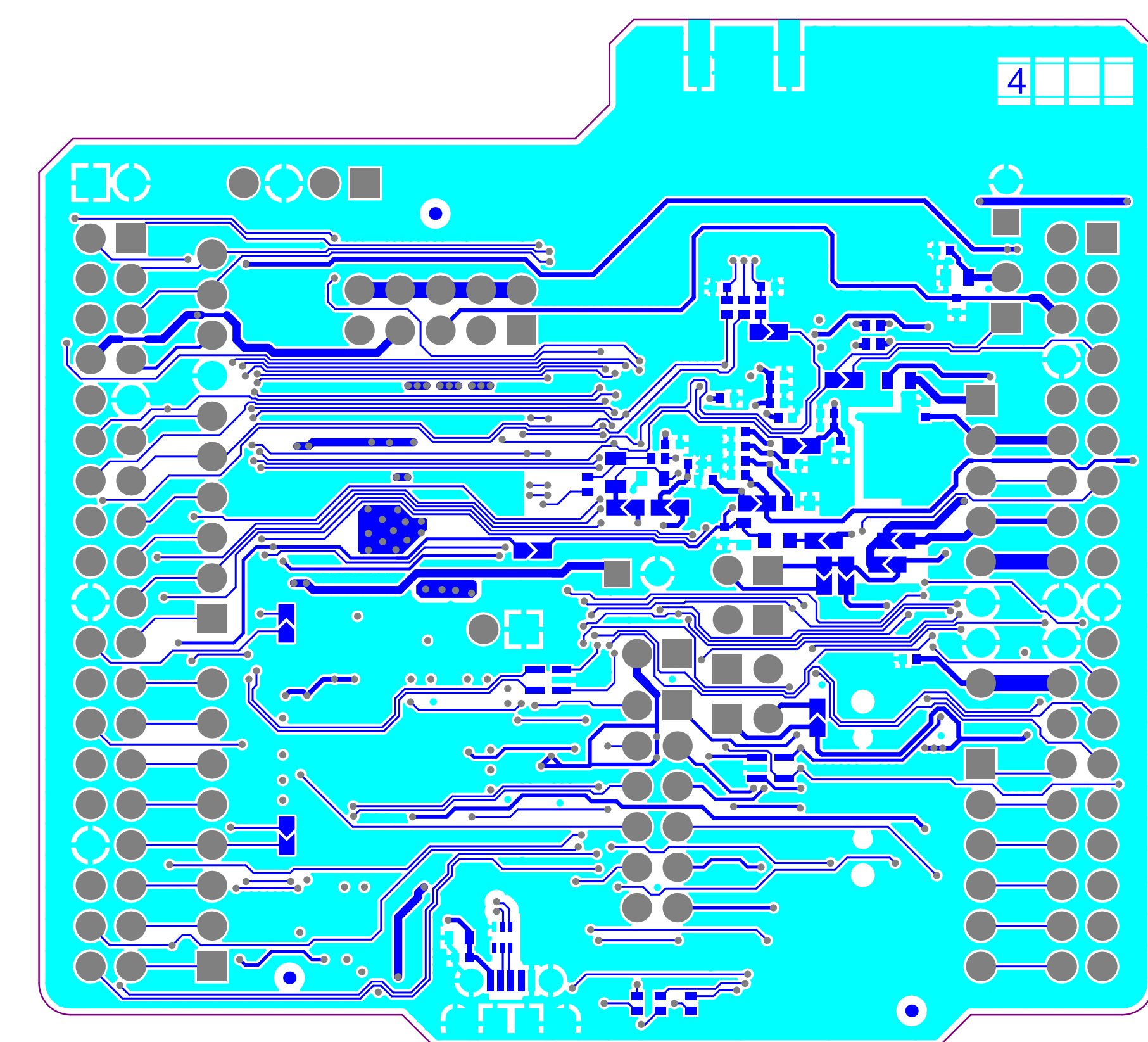
| | | |
|--------------------------|---------------------|--|
| Project: NUCLEO-WL5JC | |  |
| Layer: Top Layer | Gerber: .GTL | |
| Variant: [No Variations] | Ref: MB1389 | |
| Date: 2020-September-09 | Rev: E | |




| | | |
|--------------------------|-------------|--|
| Project: NUCLEO-WL5JC | |  |
| Layer: Signal Layer 1 | Gerber: .G1 | |
| Variant: [No Variations] | Ref: MB1389 | |
| Date: 2020-September-09 | Rev: E | |




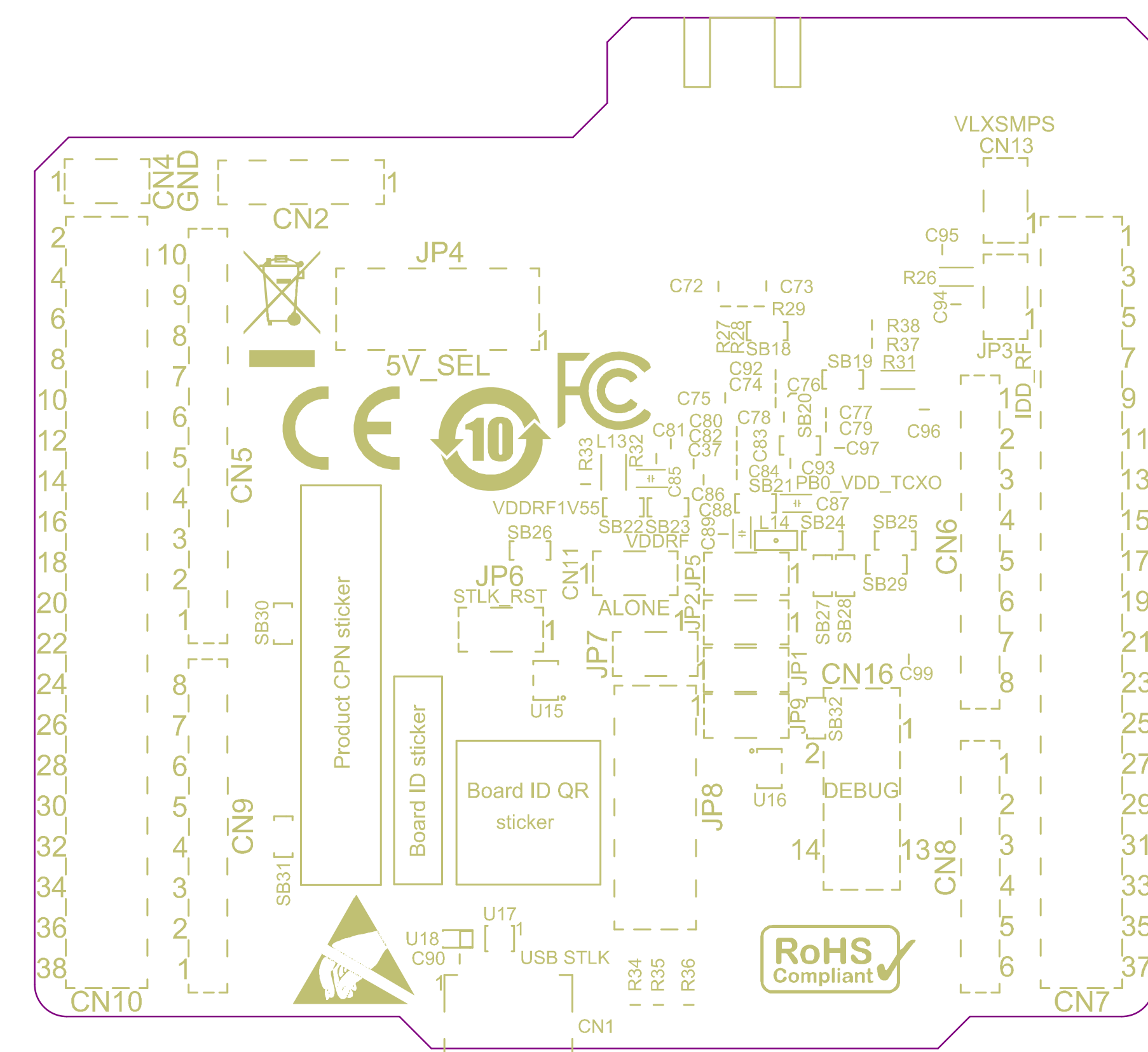
| | | |
|--------------------------|-------------|--|
| Project: NUCLEO-WL5JC | |  |
| Layer: Signal Layer 2 | Gerber: .G2 | |
| Variant: [No Variations] | Ref: MB1389 | |
| Date: 2020-September-09 | Rev: E | |




| | | |
|--------------------------|-------------|---|
| Project: NUCLEO-WL5JC | |  |
| Layer: Bottom Layer | Gerber:.GBL | |
| Variant: [No Variations] | Ref: MB1389 | |
| Date: 2020-September-09 | Rev: E | |



| | | |
|--------------------------|-------------|---|
| Project: NUCLEO-WL5JC | |  |
| Layer: Bottom Solder | Gerber:.GBS | |
| Variant: [No Variations] | Ref: MB1389 | |
| Date: 2020-September-09 | Rev: E | |



| | | |
|--------------------------|--------------|---|
| Project: NUCLEO-WL5JC | |  |
| Layer: Bottom Overlay | Gerber: .GBO | |
| Variant: [No Variations] | Ref: MB1389 | |
| Date: 2020-September-09 | Rev: E | |

THE COMPONENTS WITH PLATED THROUGH HOLE (PTH) MAY BE WELDED (CABLED) IN "PIN-IN-PASTE" MODE (IF NECESSARY)
""BOTTOM PASTE""

PCB SPECIFICATIONS :

A. MATERIAL :

B. MATERIAL FAMILY :

C. SOLDERMASK COLOR :

D. SILKSCREEN COLOR :

E. SURFACE FINISH :

F. IMPEDANCE CONTROL :

G. THROUGH VIA :

H. STACK-UP :

FR-4

N/A

☐ GREEN

☒ WHITE

☐ RED

☐ BLACK

☐ WHITE

☐ YELLOW

☐ BLACK

☒ Blue ink PANTONE 2955

☒ ENIG

☐ IMMERSION SILVER

☐ IMMERSION TIN

☐ HASL

☐ HASL (PB-FREE)

☐ GOLDEN FINGER

☐ NO

☒ YES (SEE IMPEDANCE TABLE FOR DETAIL INFORMATION)

PLUG THE VIAS WHICH ARE COVERED WITH SOLDERMASK ONE OR TWO SIDE.

PLUG MATERIAL : ☒ SOLDERMASK ☐ NON-CONDUCTIVE EPOXY.

SEE LAYER STACK-UP SEQUENCE FOR OVERALL THICKNESS.

PCB : TYPE 3

ASPECT-RATIO, AXE Z :

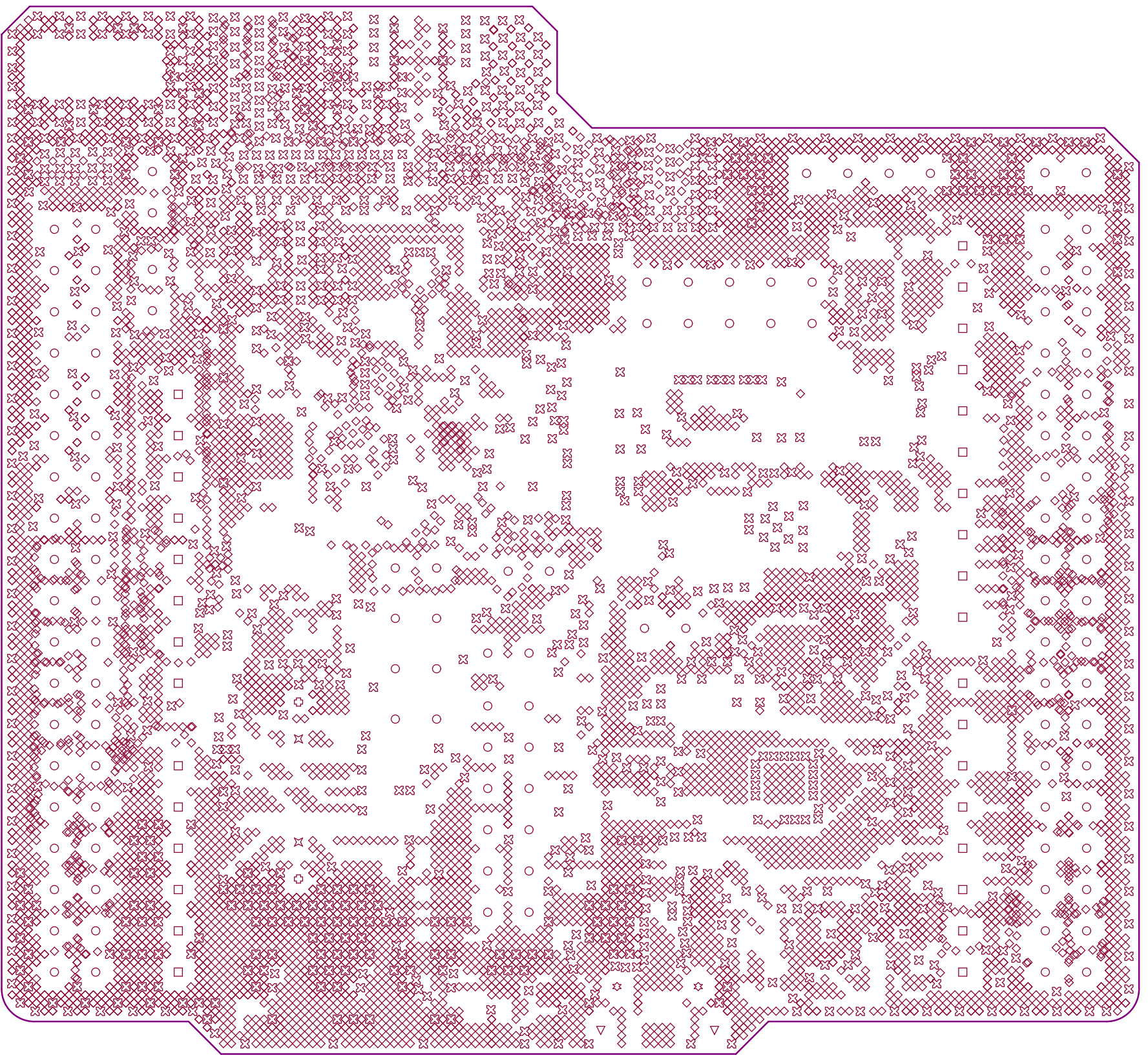
6:1 to 8:1
LEVEL "B"

MINIMUM PARAMETERS

DEFAULT
TRACKS : 0.120mm
GAPS : 0.120mm

EXCEPT BGA PITCH 0.5MM U13
TRACKS : 0.090mm
GAPS : 0.090mm

| Layer | Name | Material | Thickness | Constant | Board Layer Stack |
|-------|----------------|---------------|-----------|----------|-------------------|
| 1 | Top Overlay | | | | |
| 2 | Top Solder | Solder Resist | 0,020mm | 3,5 | |
| 3 | Top Layer | Copper | 0,035mm | | |
| 4 | Dielectric 1 | 1080HR RC68 | 0,076mm | 4,18 | |
| 5 | Signal Layer 1 | Copper | 0,035mm | | |
| 6 | Dielectric 2 | 7 x 7628 | 1,268mm | 4,74 | |
| 7 | Signal Layer 2 | Copper | 0,035mm | | |
| 8 | Dielectric 3 | 1080HR RC68 | 0,076mm | 4,18 | |
| 9 | Bottom Layer | Copper | 0,035mm | | |
| 10 | Bottom Solder | Solder Resist | 0,020mm | 3,5 | |
| 11 | Bottom Overlay | | | | |



| Symbol | Count | Hole Size | Plated | Hole Type | Drill Layer Pair | Via/Pad | Pad Shape | Hole Length | Routed Path Length |
|--------|------------|--------------------|--------|-----------|--------------------------|---------|-----------|--------------------|--------------------|
| ▽ | 2 | 0,600mm (23,62mil) | PTH | Slot | Top Layer - Bottom Layer | Pad | Rounded | 1,300mm (51,18mil) | 0,700mm (27,56mil) |
| ☆ | 2 | 0,900mm (35,43mil) | PTH | Round | Top Layer - Bottom Layer | Pad | Rounded | - | - |
| ✧ | 2 | 0,970mm (38,19mil) | NPTH | Round | Top Layer - Bottom Layer | Pad | Rounded | - | - |
| ⊕ | 2 | 1,190mm (46,85mil) | NPTH | Round | Top Layer - Bottom Layer | Pad | Rounded | - | - |
| □ | 32 | 1,100mm (43,31mil) | PTH | Round | Top Layer - Bottom Layer | Pad | Rounded | - | - |
| ○ | 122 | 1,000mm (39,37mil) | PTH | Round | Top Layer - Bottom Layer | Pad | (Mixed) | - | - |
| ⊗ | 1295 | 0,200mm (7,87mil) | PTH | Round | Top Layer - Bottom Layer | Via | Rounded | - | - |
| | 1457 Total | | | | | | | | |

Slot definitions : Routed Path Length = Calculated from tool start centre position to tool end centre position.
Hole Length = Routed Path Length + Tool Size = Slot length as defined in the PCB layout

| Symbol | Count | Hole Size | Plated | Hole Type | Drill Layer Pair | Via/Pad | Pad Shape |
|--------|------------|-------------------|--------|-----------|----------------------------|---------|-----------|
| ◇ | 4148 | 0,100mm (3,94mil) | PTH | Round | Top Layer - Signal Layer 1 | Via | Rounded |
| | 4148 Total | | | | | | |

| Symbol | Count | Hole Size | Plated | Hole Type | Drill Layer Pair | Via/Pad | Pad Shape |
|--------|------------|-------------------|--------|-----------|-------------------------------|---------|-----------|
| ◇ | 4578 | 0,100mm (3,94mil) | PTH | Round | Signal Layer 2 - Bottom Layer | Via | Rounded |
| | 4578 Total | | | | | | |

Project: NUCLEO-WL5JC

Layer: **Drill Drawing**

Variant: [No Variations]

Date: 2020-September-09

Gerber: **.DRL**

Ref: MB1389

Rev: E

