

HW3

UP

LEFT

LCD ROCKTEK RK070ER9427-CT

RIGHT

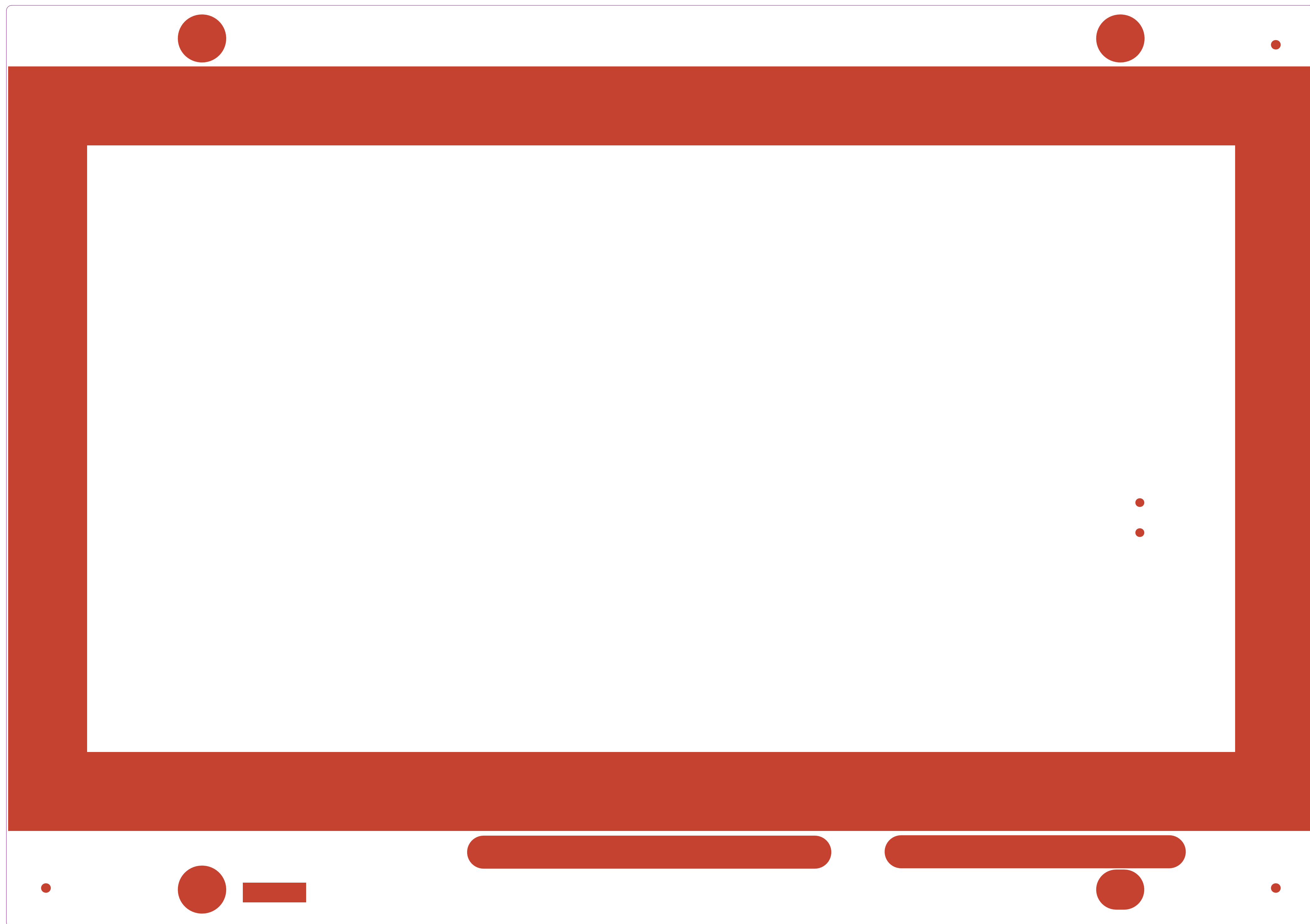
DOWN

MB1370B



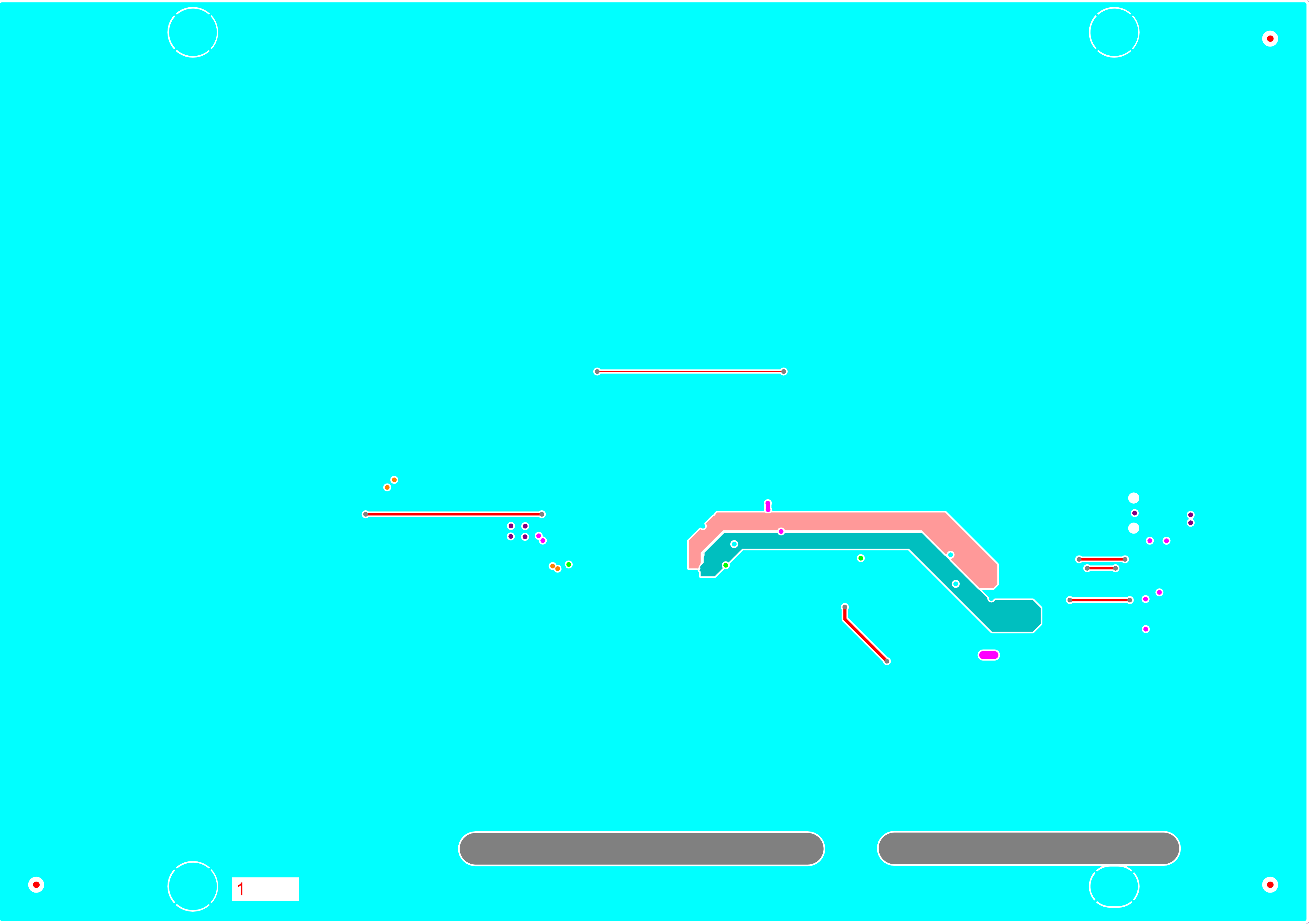
LCD 7" WVGA

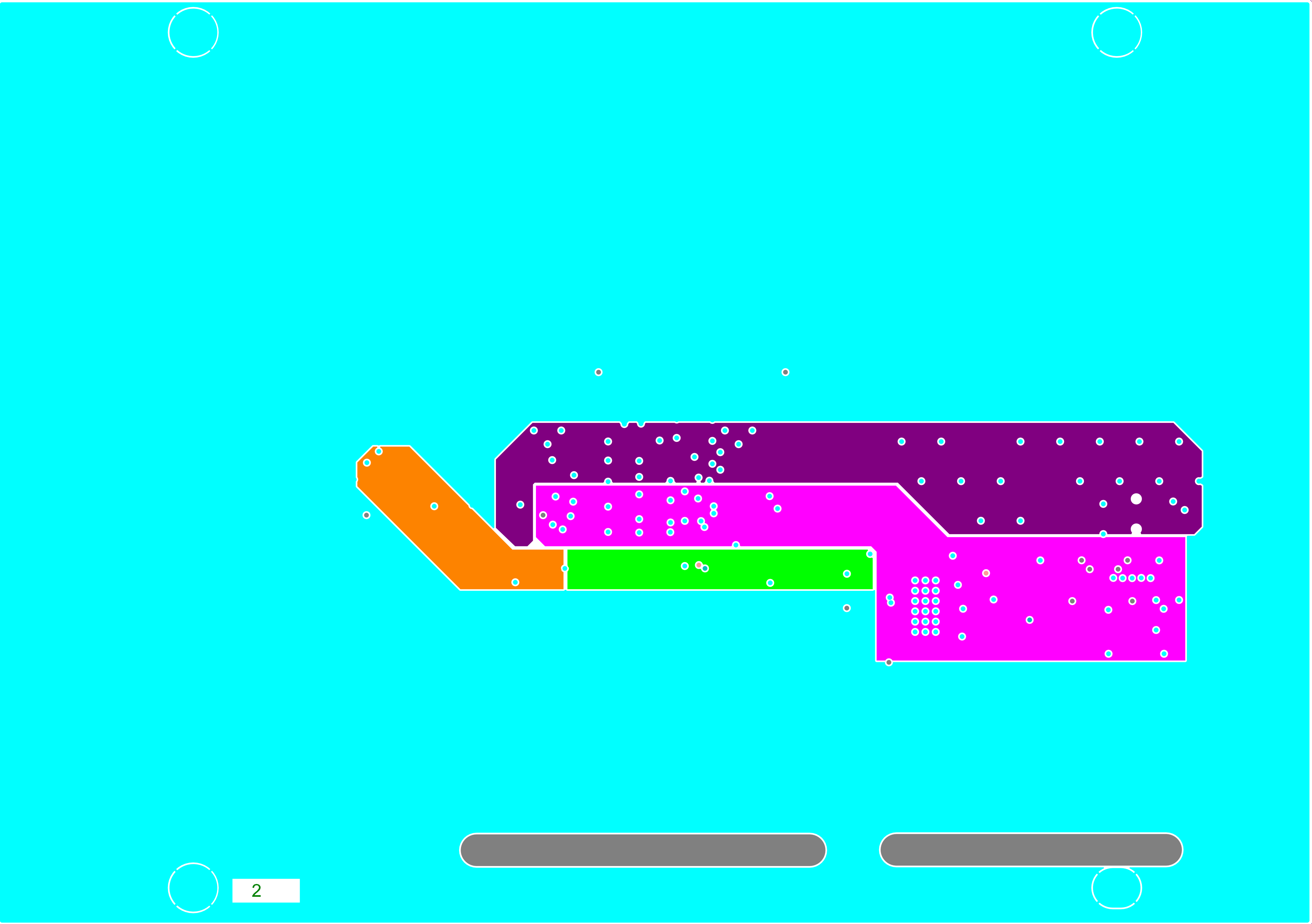


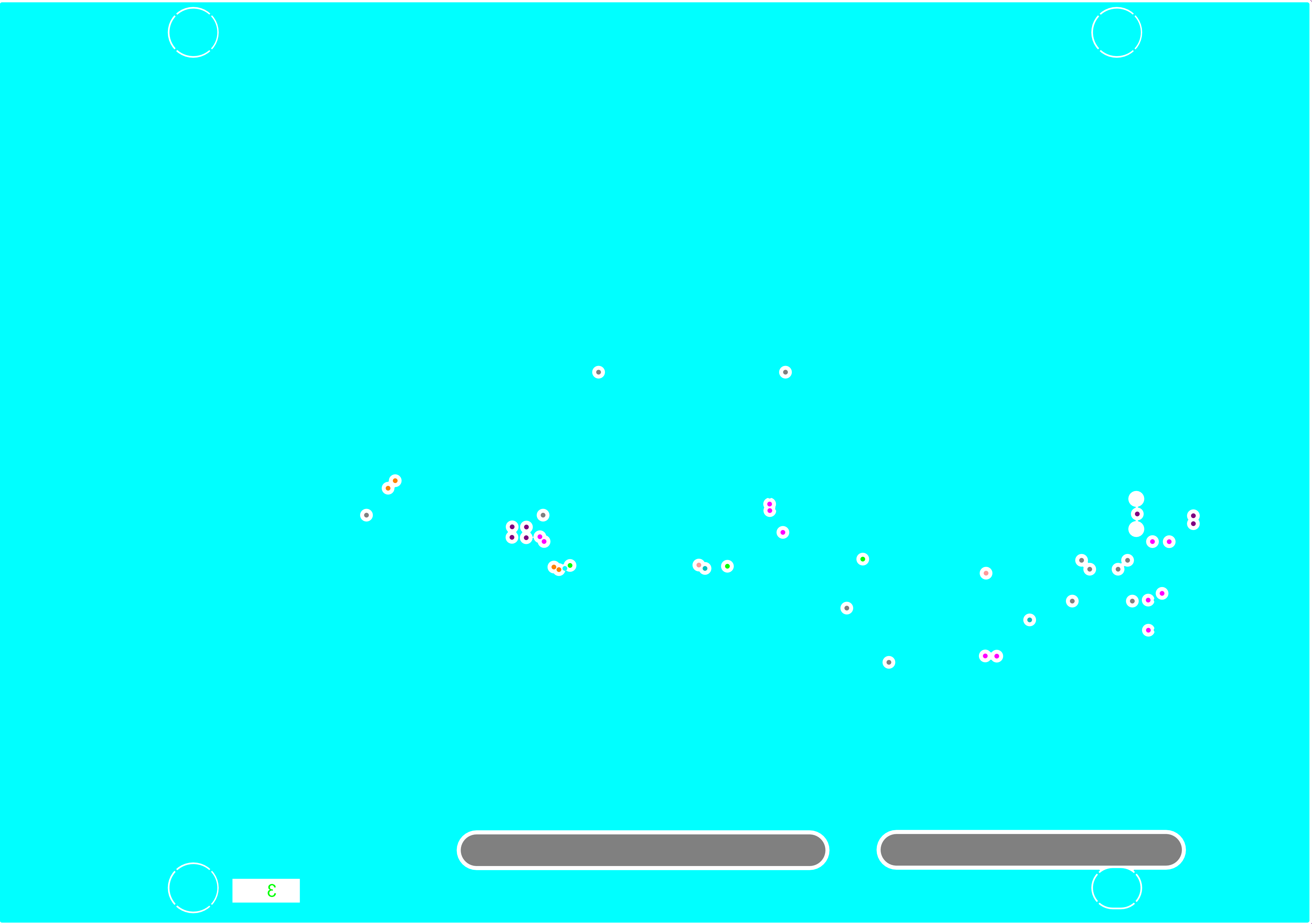


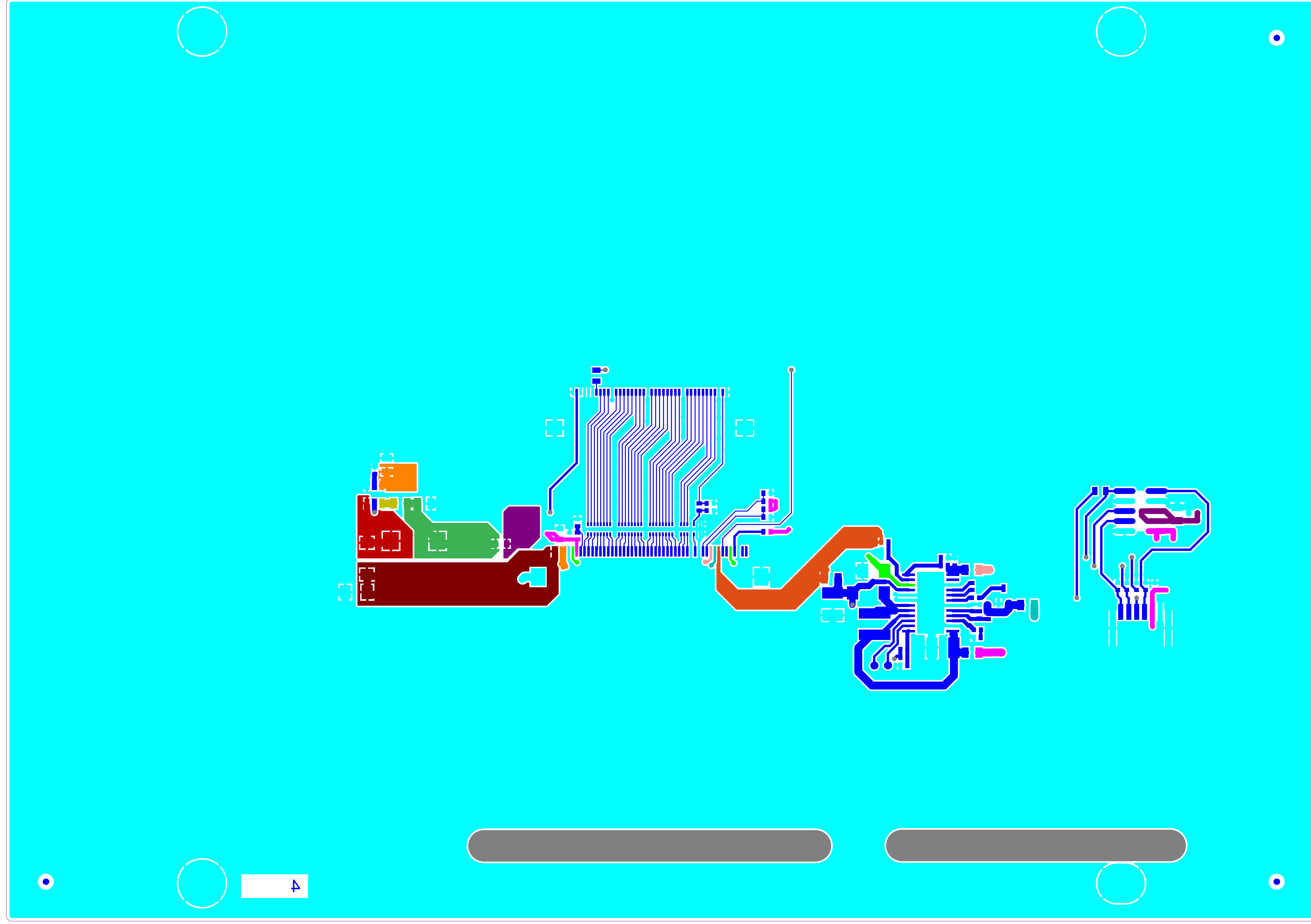
Top Solder

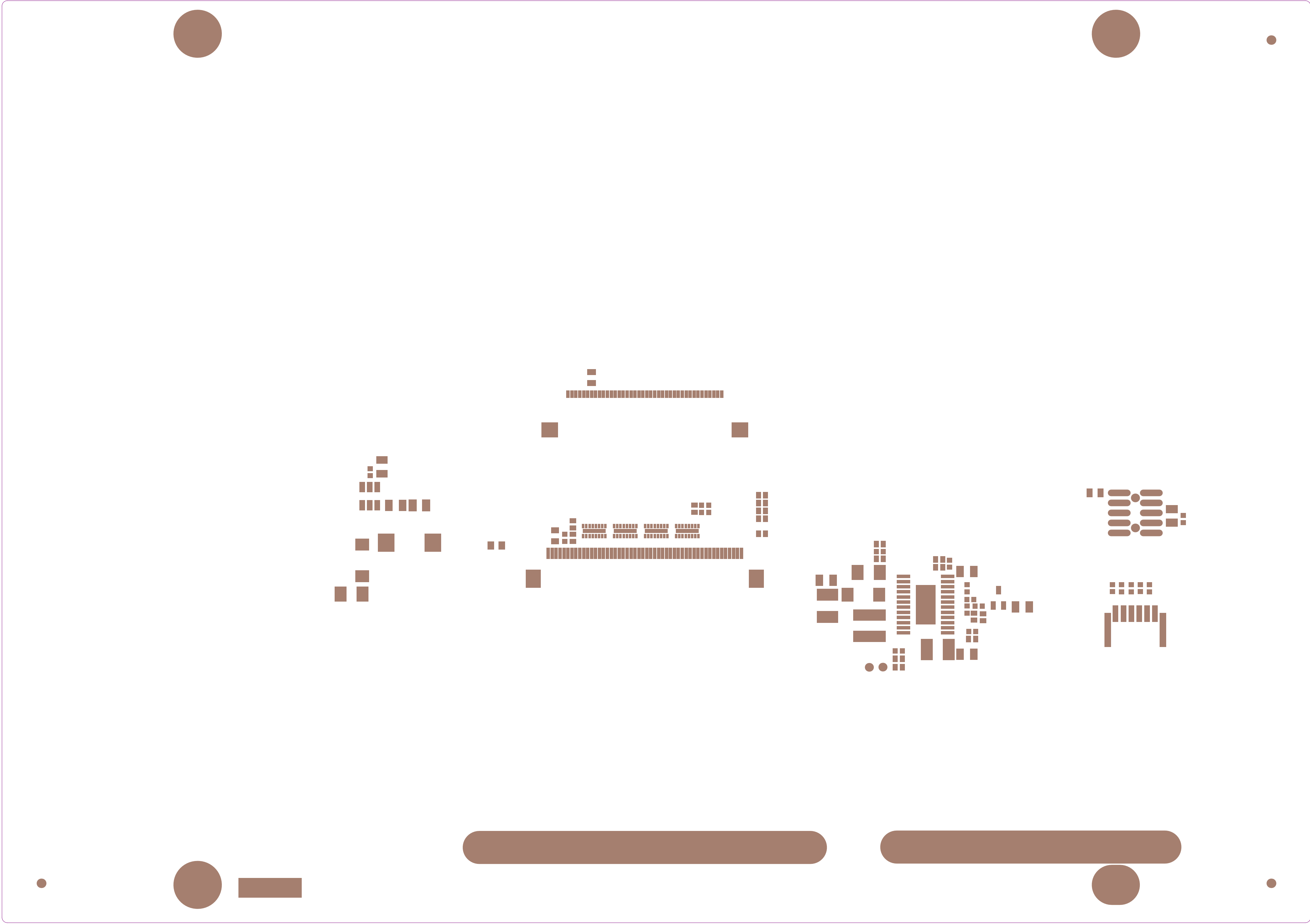
.GTS





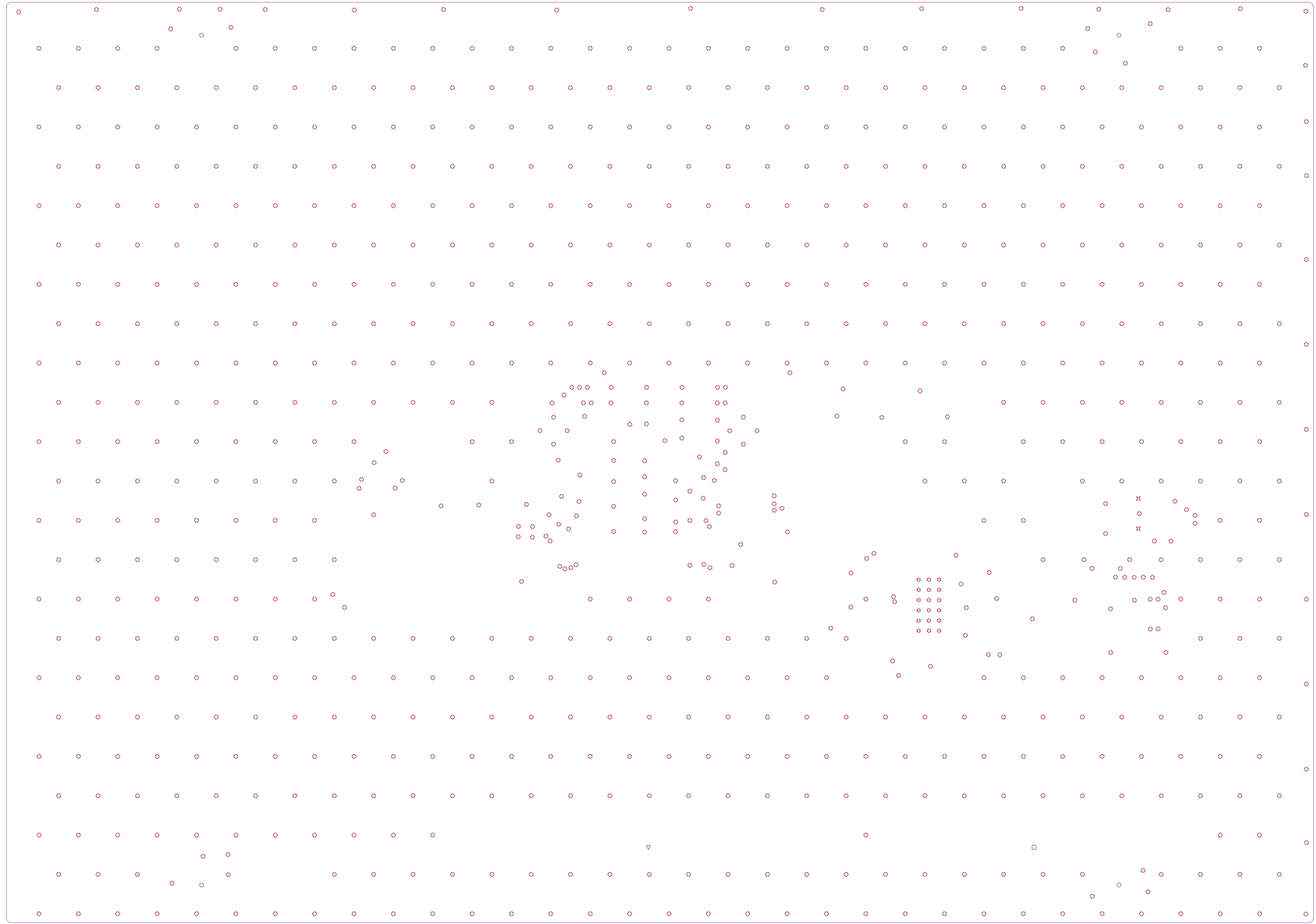






Symbol	Count	Hole Size	Plated	Hole Type	Drill Layer Pair	Via/Pad	Pad Shape	Template	Description	Hole Tolerance (+)	Hole Tolerance (-)	Hole Length	Routed Path Length
□	1	4,00mm (157,48mil)	NPTH	Slot	Top Layer - Bottom Layer	Pad	Rounded	r3800_400hn400_3800r100m3810_410				38,00mm (1496,06mil)	34,00mm (1338,58mil)
▽	1	4,00mm (157,48mil)	NPTH	Slot	Top Layer - Bottom Layer	Pad	Rounded	r4600_400hn400_4600r100m4610_410				46,00mm (1811,02mil)	42,00mm (1653,54mil)
✕	2	1,00mm (39,37mil)	NPTH	Round	Top Layer - Bottom Layer	Pad	Rounded	c0hn100m105p1000				-	-
○	4	3,50mm (137,80mil)	PTH	Round	Top Layer - Bottom Layer	Pad	Rounded	(Mixed)				-	-
✳	18	0,30mm (11,81mil)	PTH	Round	Top Layer - Bottom Layer	Via	Rounded	v60h30m0mx0				-	-
⊕	804	0,25mm (10,00mil)	PTH	Round	Top Layer - Bottom Layer	Via	Rounded	v60h25m0mx0				-	-
	830 Total												

Slot definitions : Routed Path Length = Calculated from tool start centre position to tool end centre position.
Hole Length = Routed Path Length + Tool Size = Slot length as defined in the PCB layout



PCB SPECIFICATIONS :

- A. MATERIAL :

B. MATERIAL FAMILY :

C. SOLDERMASK COLOR :

D. SILKSCREEN COLOR :

E. SURFACE FINISH :

F. IMPEDANCE CONTROL :

G. THROUGH VIA :

H. STACK-UP :
- FR-4

N/A

☐ GREEN

☒ WHITE

☒ ENIG

☐ HASL

☒ NO

PLUG THE VIAS WHICH ARE COVERED WITH SOLDERMASK ONE OR TWO SIDE.

PLUG MATERIAL : ☒ SOLDERMASK ☐ NON-CONDUCTIVE EPOXY.

SEE LAYER STACK-UP SEQUENCE FOR OVERALL THICKNESS.
- ☐ TG-170

☒ TG-150

☐ TG-140

☐ BLUE

☐ YELLOW

☐ IMMERSION SILVER

☐ HASL (PB-FREE)

☐ YES (SEE IMPEDANCE TABLE FOR DETAIL INFORMATION)

☐ BLACK

☐ BLACK

☐ IMMERSION TIN

☐ GOLDEN FINGER

**Plating type :
lead Gold

Layer	Name	Material	Thickness	Constant	Board Layer Stack
1	Top Overlay				
2	Top Solder	Solder Resist	0,015mm	3,5	
3	Top Layer	Copper	0,042mm		
4	Dielectric 1	PP-IT-180A	0,106mm	4,2	
5	Signal Layer 1	Copper	0,035mm		
6	Dielectric 2	FR4	1,248mm	4,2	
7	Signal Layer 2	Copper	0,035mm		
8	Dielectric 3	PP-IT-180A	0,106mm	4,2	
9	Bottom Layer	Copper	0,042mm		
10	Bottom Solder	Solder Resist	0,015mm	3,5	
11	Bottom Overlay				

PCB : TYPE 3

ASPECT-RATIO, AXE Z :
6:1 to 8:1
LEVEL "B"

MINIMUN PARAMETERS

DEFAULT
TRACKS : 0.120mm
GAPS : 0.120mm