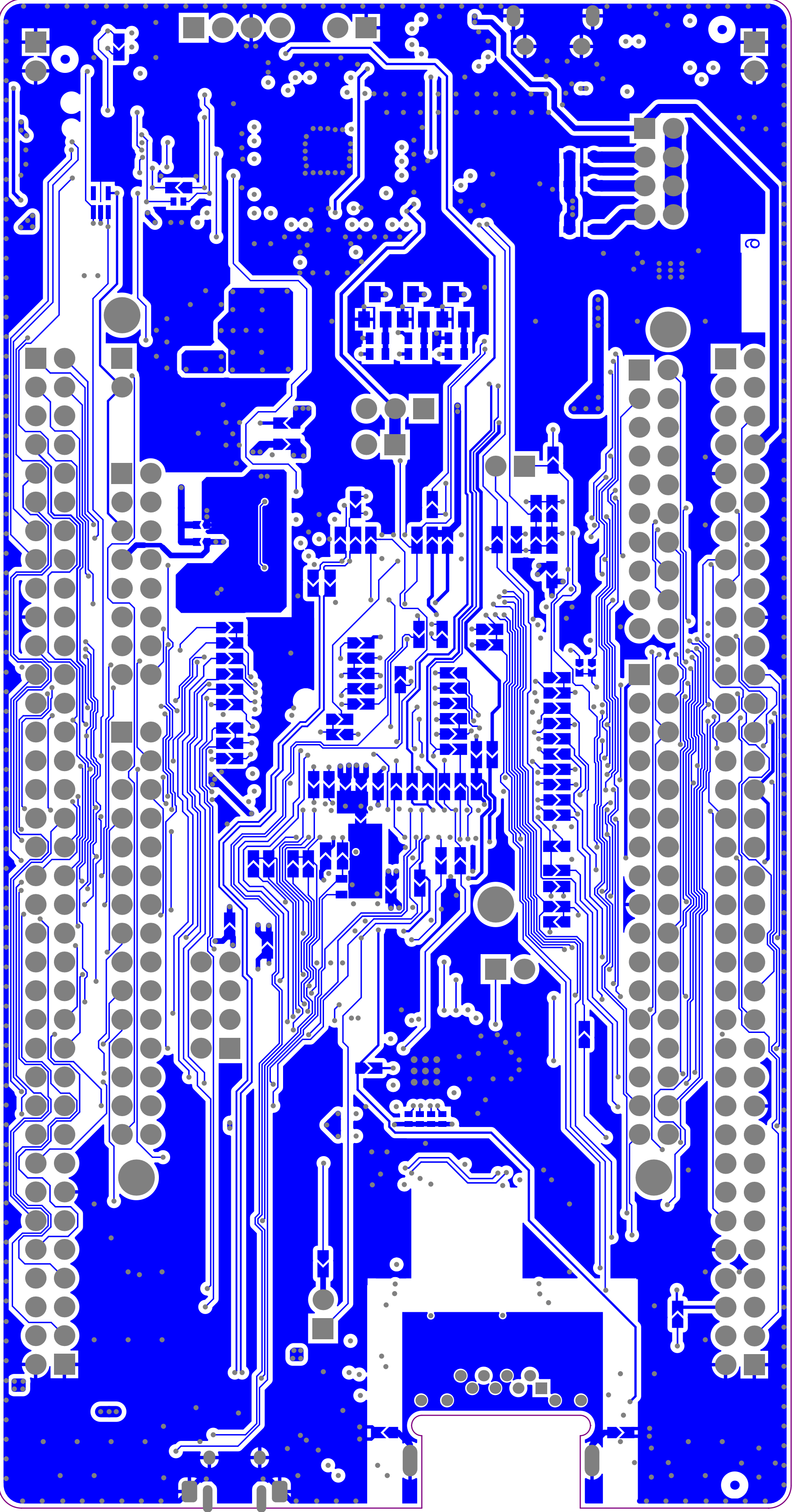


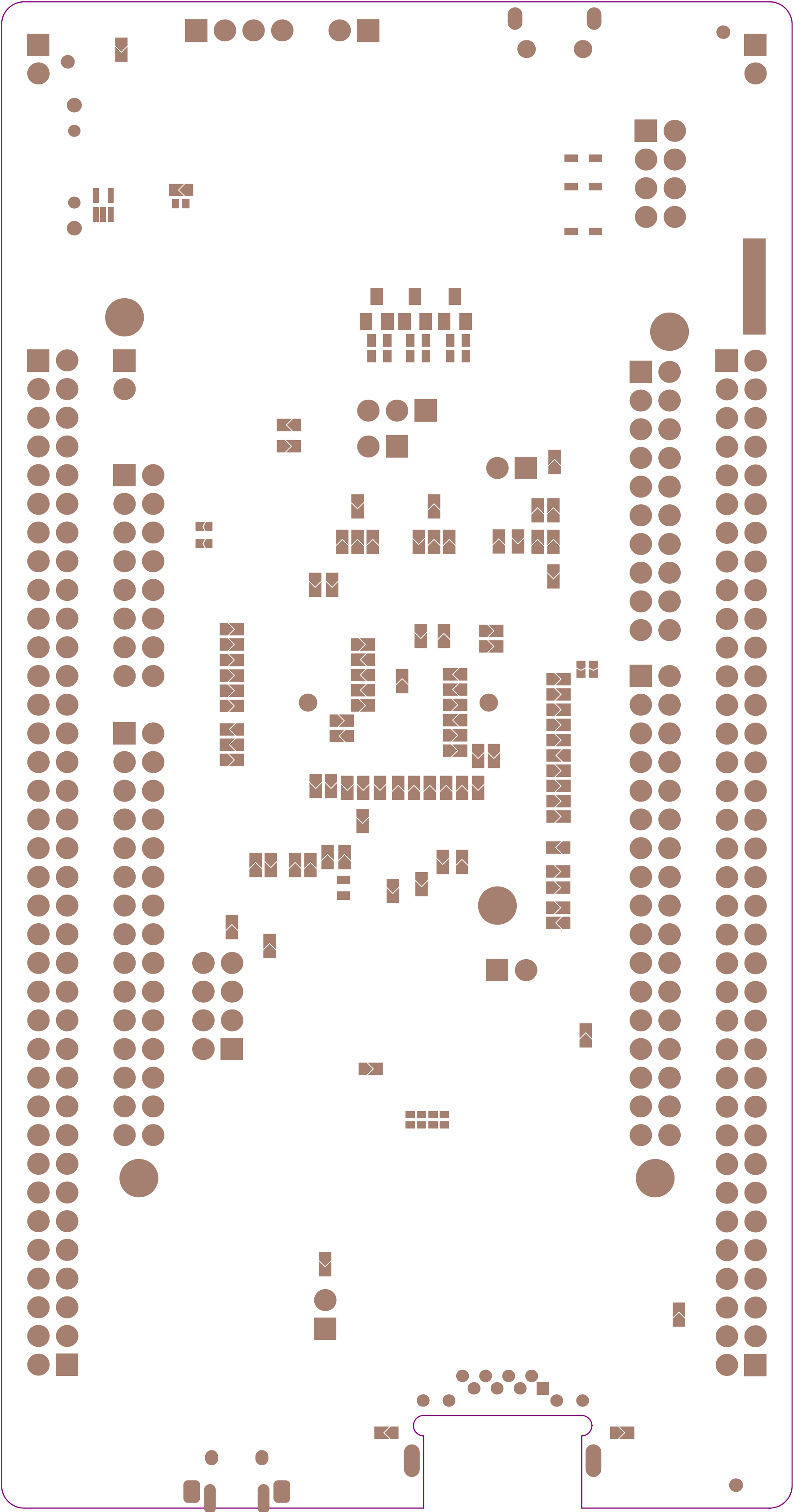
.GBL

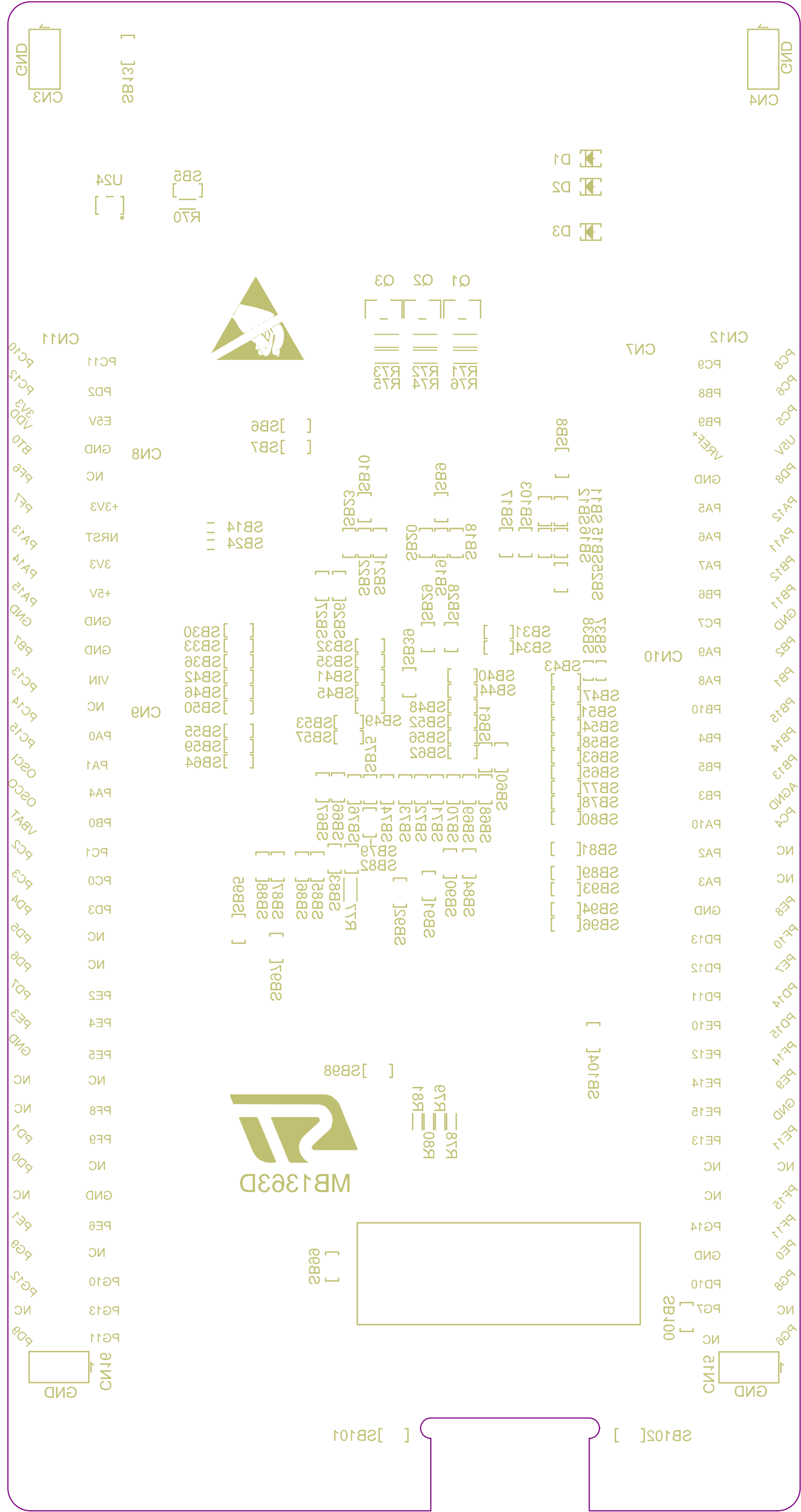
Bottom Layer



.GBS

Bottom Solder





PCB SPECIFICATIONS :

A. MATERIAL :

B. MATERIAL FAMILY :

C. SOLDERMASK COLOR :

D. SILKSCREEN COLOR :

E. SURFACE FINISH :

F. IMPEDANCE CONTROL :

G. THROUGH VIA :

H. STACK-UP :

FR-4

N/A

☐ GREEN

☒ WHITE

☐ HASL

☐ NO

☒ WHITE

☐ YELLOW

☐ IMMERSION SILVER

☐ HASL (PB-FREE)

☐ RED

☐ BLACK

☐ IMMERSION TIN

☐ GOLDEN FINGER

☒ TG-150

☐ TG-140

☐ BLACK

☒ Blue ink PANTONE 2955

☐ YES (SEE IMPEDANCE TABLE FOR DETAIL INFORMATION)

☒ SOLDERMASK

☐ NON-CONDUCTIVE EPOXY.

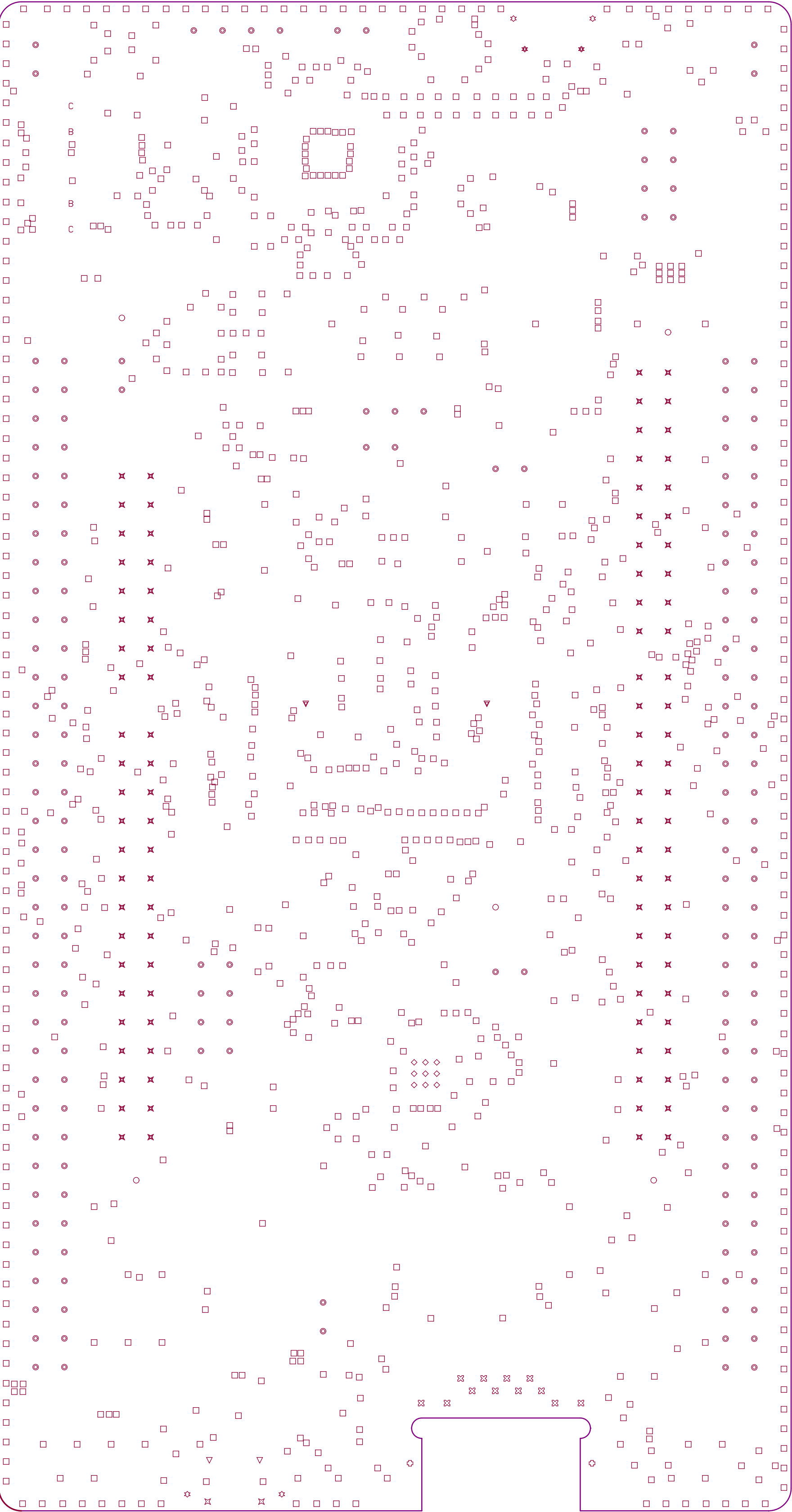
SEE LAYER STACK-UP SEQUENCE FOR OVERALL THICKNESS.

PCB : TYPE 3

ASPECT-RATIO, AXE Z :
6:1 to 8:1
LEVEL "B"

MINIMUM PARAMETERS

DEFAULT
TRACKS : 0.120mm
GAPS : 0.120mm



Layer	Name	Material	Thickness	Constant	Board Layer Stack
1	Top Overlay				
2	Top Solder	Solder Resist	0,015mm	3,5	
3	Top Layer	Copper	0,042mm		
4	Dielectric 1	FR-4	0,099mm	4,2	
5	Signal Layer 1	Copper	0,035mm		
6	Dielectric 2		0,102mm	4,2	
7	Signal Layer 2	Copper	0,035mm		
8	Dielectric 3		0,946mm	4,2	
9	Signal Layer 3	Copper	0,035mm		
10	Dielectric 4		0,102mm	4,2	
11	Signal Layer 4	Copper	0,035mm		
12	Dielectric 5		0,099mm	4,2	
13	Bottom Layer	Copper	0,042mm		
14	Bottom Solder	Solder Resist	0,015mm	3,5	
15	Bottom Overlay				

Symbol	Count	Hole Size	Plated	Hole Type	Drill Layer Pair	Hole Length	Routed Path Length
	1136	0,200mm (7,87mil)	PTH	Round	Top Layer - Bottom Layer	-	-
	9	0,300mm (11,81mil)	PTH	Round	Top Layer - Bottom Layer	-	-
	4	0,600mm (23,62mil)	PTH	Slot	Top Layer - Bottom Layer	1,300mm (51,18mil)	0,700mm (27,56mil)
	2	0,650mm (25,59mil)	PTH	Slot	Top Layer - Bottom Layer	0,850mm (33,47mil)	0,200mm (7,88mil)
	12	0,700mm (27,56mil)	PTH	Round	Top Layer - Bottom Layer	-	-
	2	0,700mm (27,56mil)	PTH	Slot	Top Layer - Bottom Layer	2,200mm (86,61mil)	1,500mm (59,06mil)
	2	0,850mm (33,47mil)	NPTH	Slot	Top Layer - Bottom Layer	2,425mm (95,47mil)	1,575mm (62,01mil)
	2	0,900mm (35,43mil)	PTH	Round	Top Layer - Bottom Layer	-	-
	2	0,970mm (38,19mil)	NPTH	Round	Top Layer - Bottom Layer	-	-
	183	1,000mm (39,37mil)	PTH	Round	Top Layer - Bottom Layer	-	-
	100	1,100mm (43,31mil)	PTH	Round	Top Layer - Bottom Layer	-	-
	2	1,190mm (46,85mil)	NPTH	Round	Top Layer - Bottom Layer	-	-
	2	1,500mm (59,06mil)	NPTH	Round	Top Layer - Bottom Layer	-	-
	5	3,200mm (125,98mil)	NPTH	Round	Top Layer - Bottom Layer	-	-
	1463 Total						

Slot definitions : Routed Path Length = Calculated from tool start centre position to tool end centre position.
Hole Length = Routed Path Length + Tool Size = Slot length as defined in the PCB layout