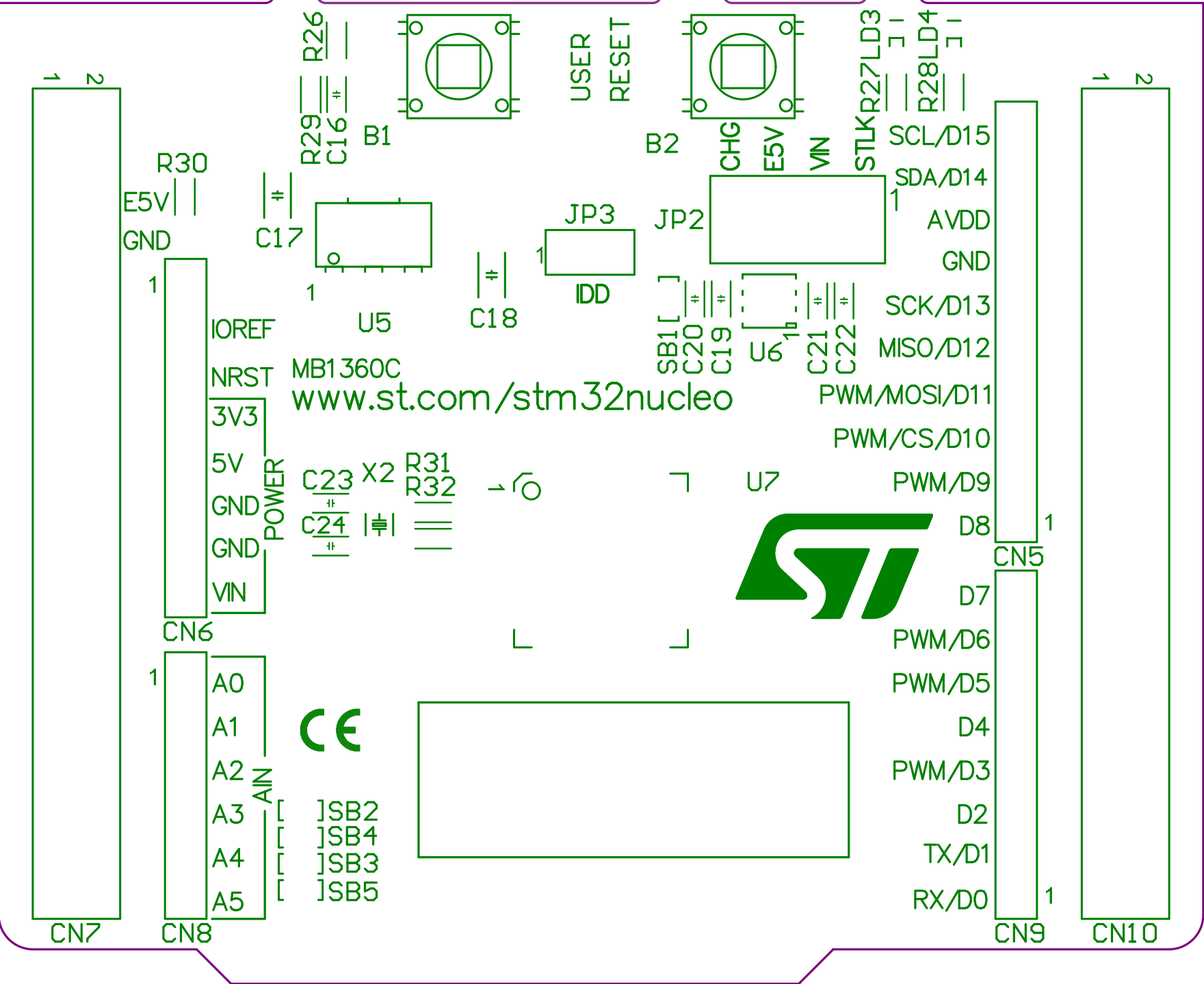
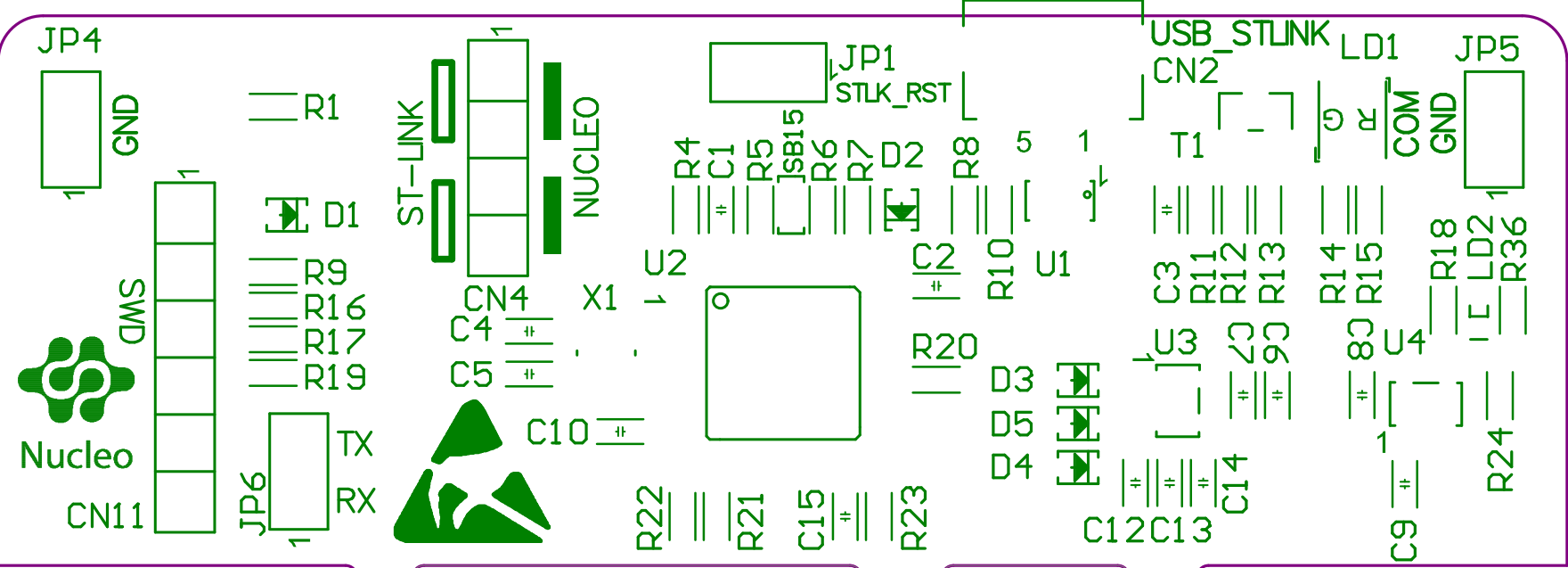
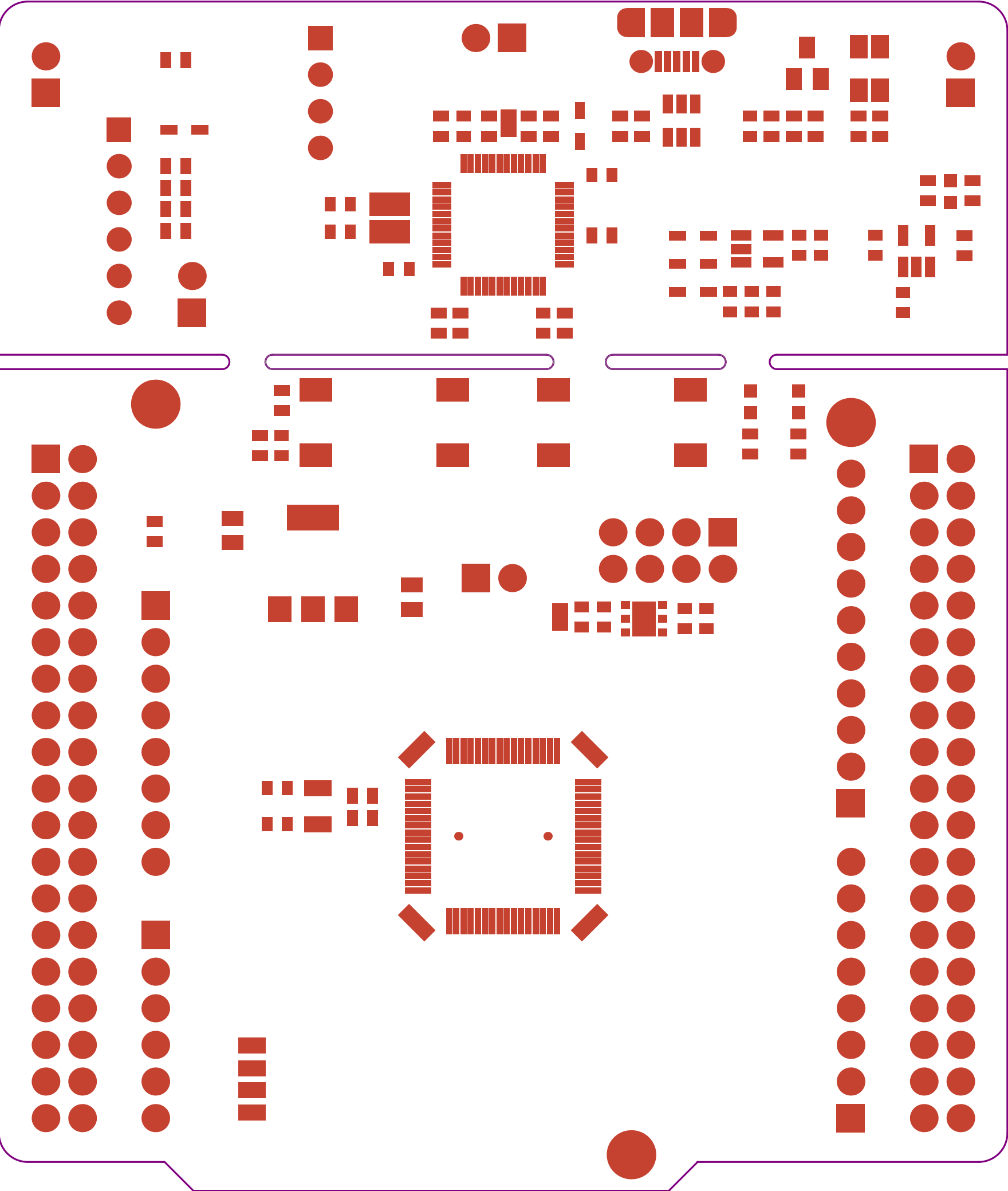


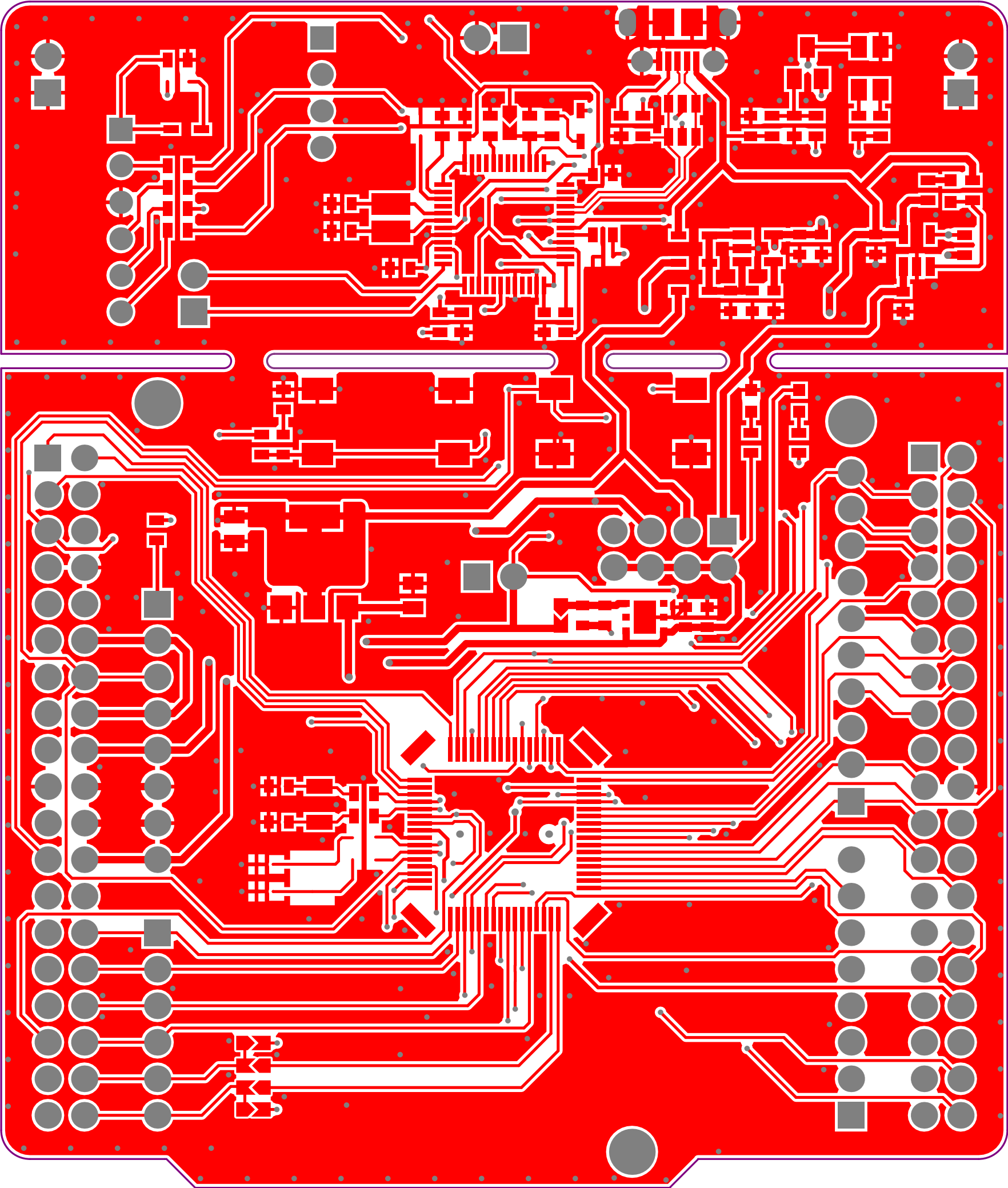
MB1360C



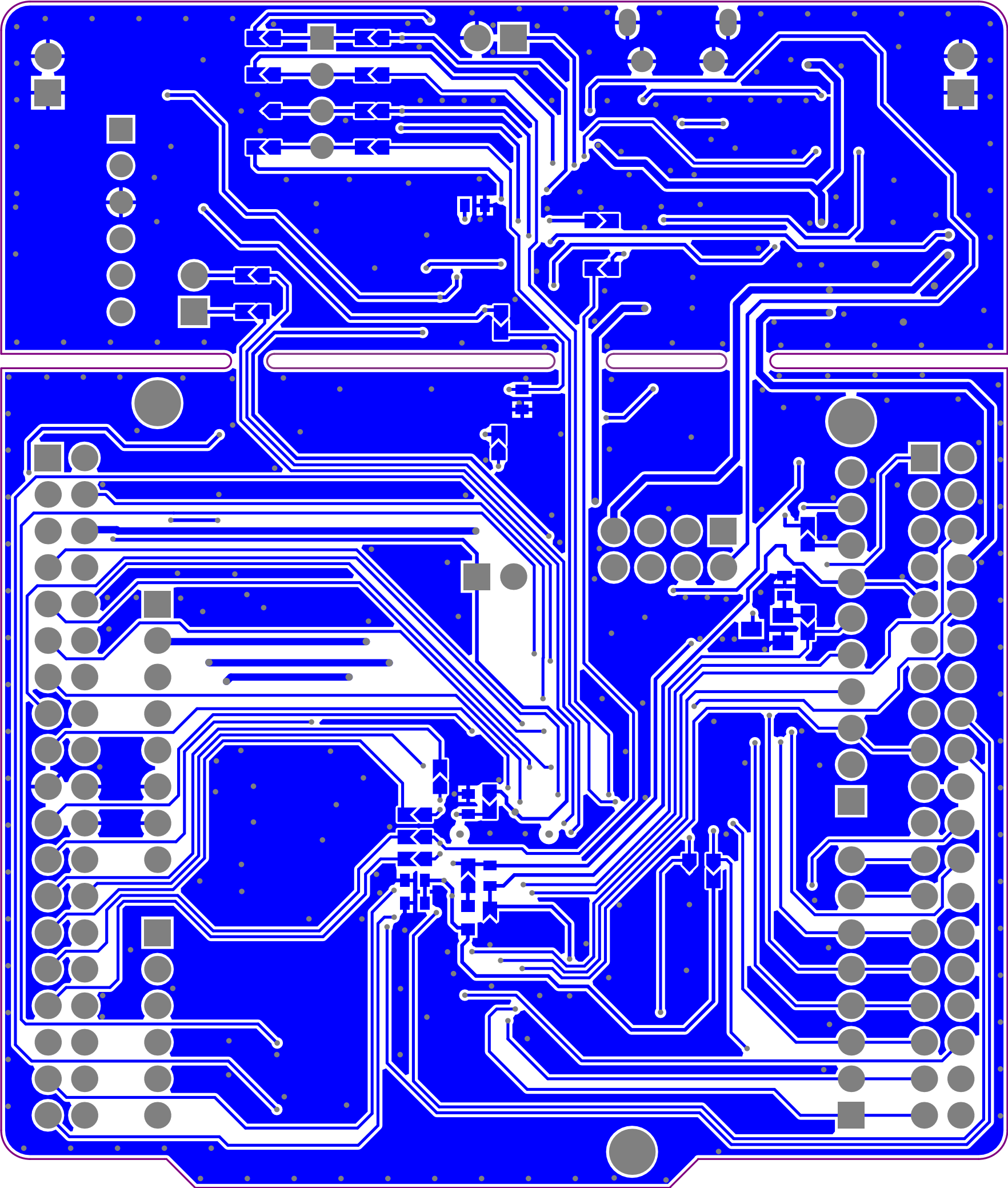
MB1360C



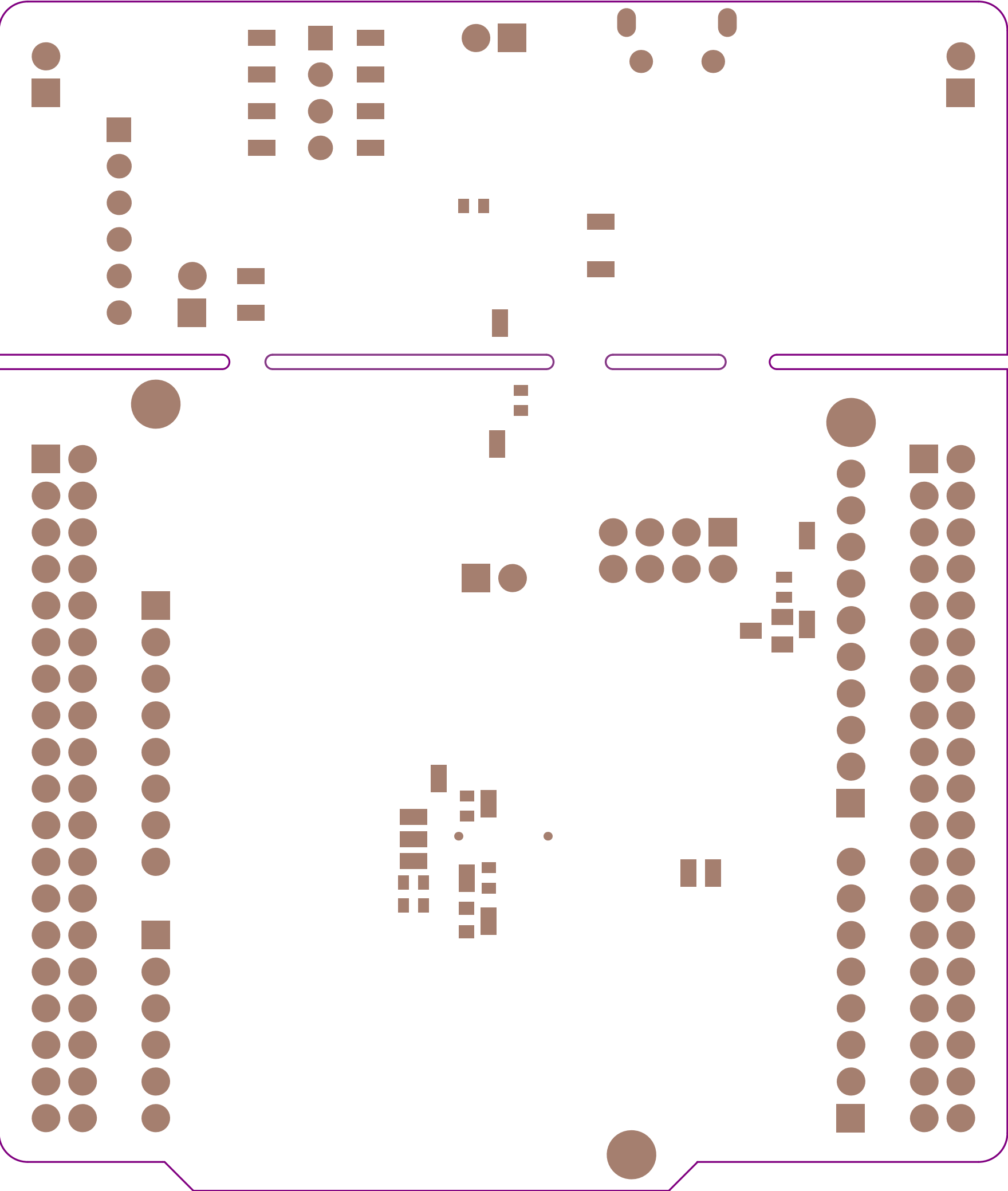
MB1360C

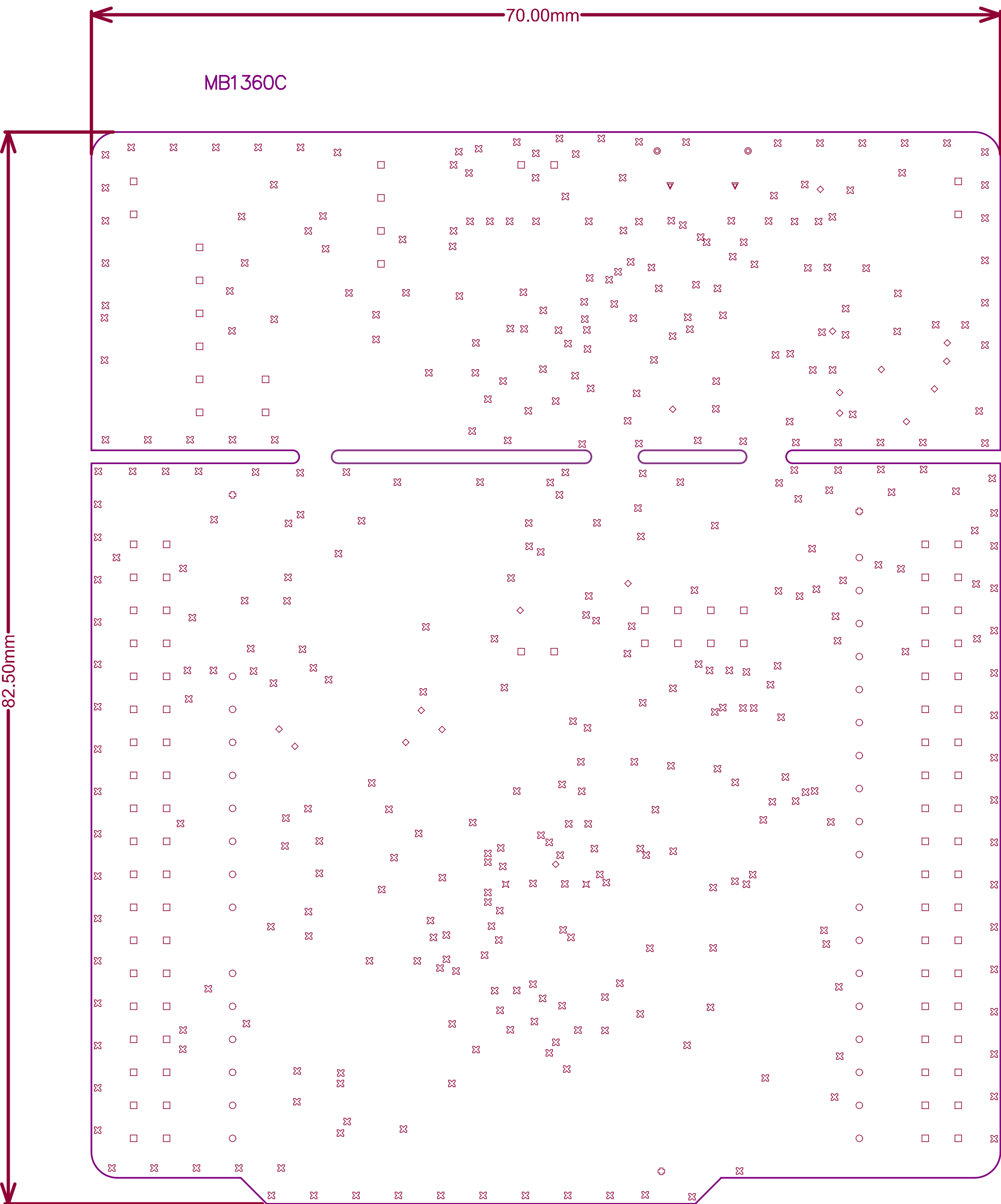


MB1360C



MB1360C



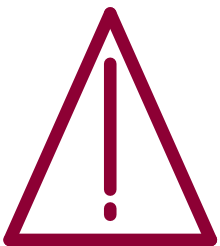


Symbol	Count	Hole Size	Hole Length	Routed Path Length	Plated	Material
⦿	2	23.62mil (0.60mm)	51.18mil (1.30mm)	27.56mil (0.70mm)	PTH	Solder Resist
▼	2	35.43mil (0.90mm)	—	—	PTH	Solder Resist
✕	2	39.37mil (1.00mm)	—	—	NPTH	Solder Resist
⊕	3	125.98mil (3.20mm)	—	—	NPTH	Solder Resist
◇	18	12.00mil (0.30mm)	—	—	PTH	Solder Resist
○	32	43.31mil (1.10mm)	—	—	PTH	Solder Resist
□	104	39.37mil (1.00mm)	—	—	PTH	Solder Resist
⊗	398	8.00mil (0.20mm)	—	—	PTH	Solder Resist
	561 Total					

Slot definitions : Routed Path Length = Calculated from tool start centre position to tool end centre position
Hole Length = Routed Path Length + Tool Size = Slot length as defined in the tool definition file

Layer Stack Up Detail for: MB1360B.PcbDoc

Layer Name	Gerber Document	Copper Thickness	Dielectric Height	Dielectric Material	Dielectric Constant	Dielectric Type
Top Solder Mask	(.GTS)		0.4mil	Solder Resist	3.50	
Top Layer	(.GTL)	1.4mil	59.055mil	FR-4	4.80	Core
Bottom Layer	(.GBL)	1.4mil				
Bottom Solder Mask	(.GBS)		0.4mil	Solder Resist	3.50	



Notes:
Silkscreen color : Blue ink PANTONE 2955
Solder resist color : White
Plating type : lead Gold

