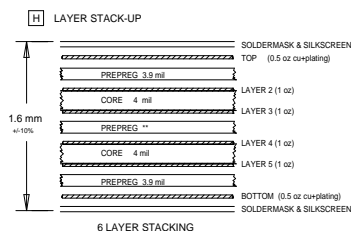
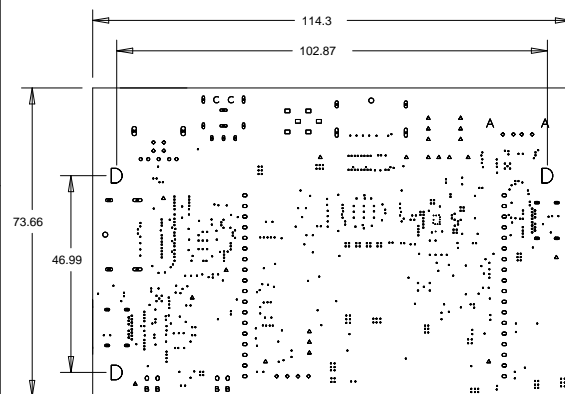


LAYER	TRACE (mil)	SPACING (mil)	IMPEDANCE (50 ohm)	IMPEDANCE (DIFFERENTIAL)	TOLERANCE
1,6 3	5.0 4.0	N/A	55 OHM	N/A	+/-10%
1,6 3	6.1 5.1	8.9 9.9	N/A	90 OHM	+/-10%
1,6 3	5.1 4.1	9.9 10.9	N/A	100 OHM	+/-10%



REVISIONS			
REV	DESCRIPTION	DATE	APPROVED
1.0	EDITION ORIGINALE	2008-**-**	***



DRILL CHART: TOP TO BOTTOM				
ALL UNITS ARE IN MILS				
FIGURE	SIZE	TOLERANCE	PLATED	QTY
•	8.0	+3.0/-3.0	PLATED	12
•	10.0	+3.0/-3.0	PLATED	174
•	12.0	+3.0/-3.0	PLATED	420
•	15.0	+3.0/-3.0	PLATED	28
◦	29.0	+3.0/-3.0	PLATED	5
◦	36.0	+3.0/-3.0	PLATED	12
◦	40.0	+3.0/-3.0	PLATED	36
△	40.0	+3.0/-3.0	PLATED	22
◊	43.0	+3.0/-3.0	PLATED	4
◻	48.0	+3.0/-3.0	PLATED	6
○	51.0	+3.0/-3.0	PLATED	2
A	80.0	+3.0/-3.0	PLATED	2
B	43.0	+3.0/-3.0	NON-PLATED	4
C	59.0	+2.0/-2.0	NON-PLATED	2
D	138.0	+2.0/-2.0	NON-PLATED	3
⦿	47.0x24.0	+5.0/-5.0	PLATED	3
⦿	47.0x24.0	+5.0/-5.0	PLATED	8
⦿	57.0x24.0	+5.0/-5.0	PLATED	2
⦿	67.0x24.0	+5.0/-5.0	PLATED	2
⦿	67.0x24.0	+5.0/-5.0	PLATED	2
⦿	67.0x28.0	+5.0/-5.0	PLATED	2
⦿	67.0x28.0	+5.0/-5.0	PLATED	2
⦿	87.0x28.0	+5.0/-5.0	PLATED	2
⦿	87.0x28.0	+5.0/-5.0	PLATED	2
⦿	87.0x40.0	+5.0/-5.0	PLATED	2

A. MATERIAL;	FR-4,	<input checked="" type="checkbox"/> TG-170	<input type="checkbox"/> TG-150	<input type="checkbox"/> TG-140
B. MATERIAL FAMILY;	N/A.			
C. SOLDERMASK COLOR;	<input type="checkbox"/> GREEN	<input checked="" type="checkbox"/> BLUE	<input type="checkbox"/> RED	<input type="checkbox"/> BLACK
D. SILKSCREEN COLOR;	<input checked="" type="checkbox"/> WHITE	<input type="checkbox"/> YELLOW	<input type="checkbox"/> BLACK	
E. SURFACE FINISH;	<input checked="" type="checkbox"/> ENIG	<input type="checkbox"/> IMMERSION SILVER	<input type="checkbox"/> IMMERSION TIN	
	<input type="checkbox"/> HASL	<input type="checkbox"/> HASL(PB-FREE)	<input type="checkbox"/> GOLDEN FINGER	
F. IMPEDANCE CONTROL;	<input type="checkbox"/> NO	<input checked="" type="checkbox"/> YES (SEE IMPEDANCE TABLE FOR DETAIL INFORMATION)		
G. THROUGH VIA;	PLUG THE VIAS WHICH ARE COVERED WITH SOLDERMASK ONE OR TWO SIDES.			
	PLUG MATERIAL:		<input checked="" type="checkbox"/> SOLDERMASK	<input type="checkbox"/> NON-CONDUCTIVE EPOXY.
H. STACK-UP;	SEE LAYER STACK-UP SEQUENCE FOR OVERALL THICKNESS.			

1. THIS BOARD WILL CONFORM TO:  
IPC-A-600, CURRENT REV., CLASS II  
IPC-6012, CURRENT REV., CLASS II
2. UNLESS OTHERWISE SPECIFIED ALL HOLE DIMENSIONS APPLY AFTER PLATING.  
ALL HOLES SHALL BE LOCATED WITHIN .003" DIAMETER OF TRUE POSITION.
3. PLATED HOLE WALL THICKNESS SHALL NOT BE LESS THAN .001 INCH MINIMUM AVERAGE, WITH NO READING LESS THAN .0008 BY CORROSION SECTION.
4. MATERIAL FR4 RATING 94V-0 MINIMUM EPOXY GLASS LAMINATE.
5. BOARD SHALL BE LPI SOLDER MASKED OVER BARE COPPER BOTH SIDES PER IPC-SM-840 CLASS II.
6. SILKSCREEN SHALL BE PERMANENT NON-CONDUCTIVE INK AND WITH NO OVERLAP ON ANY COMPONENT PAD OR THROUGH HOLE.
7. MFRG. TO LEGIBLY ETCH OR STAMP/SCREEN WITH PERMANENT NON-CONDUCTIVE INK
  - A. U.L. CODE                      D. MFRG. LOGO
  - B. DATE CODE                  E. SUCCESSFUL ELECTRICAL BOARD TEST.

8. REMOVE THE FLASHS WHICH SMALLER THAN HOLE SIZE.
9. REMOVE ALL SHAPE EDGES AND BURRS .005 MAXIMUM.
10. PLEASE USE THE SUPPLIED IPC 356 NETLIST TO VERIFY BOARD BEFORE FABRICATING BOARD.

 <p>DESIGNED BY SOFER  <a href="http://www.sofer.com.cn">www.sofer.com.cn</a></p> <p>Tel : +86 21 - 6482 6906  <a href="mailto:design@sofer.com.cn">design@sofer.com.cn</a></p>	<p>LAYER:</p> <p>FAB DARWING &amp; DRILL LEGEND</p>	<p>COMPANY NAME:</p> <p>ST</p>	
	<p>DESIGNER: Shelley</p>	<p>PROJECT NAME:</p> <p>MB1352</p>	
	<p>DATE: 2018.02.28</p>	<p>PROJECT NUMBER:</p> <p>0031-026C2</p>	<p>REV</p> <p>C</p>

UNLESS OTHERWISE SPECIFIED	SIGNATURES	DATE	LOGO				COMPANY NAME			
DIMENSIONS ARE IN INCHES TOLERANCES ON: 2 PL DECIMALS + 3 PL DECIMALS + ANGLES + FRACTIONS +	DRAWN	YY-MM-DD	TITLE							
	CHECKED	YY-MM-DD								
	ENGRG	YY-MM-DD	PROJECT NAME *							
	ISSUED									
			SIZE	B	DWG NO	*****			REV	**
			SCALE	1:1				SHEET	1 OF	