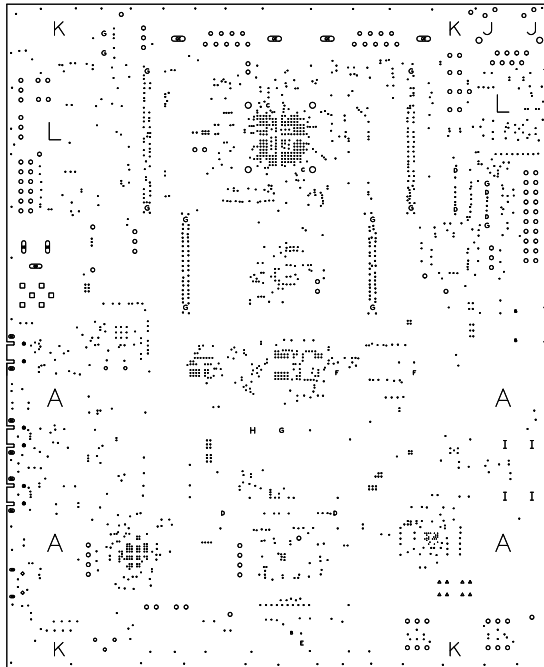



# 5 IMPEDANCE TABLE

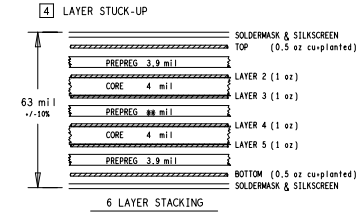
LAYER	TRACE (mil)	SPACING (mil)	IMPEDANCE (Single end)	IMPEDANCE (Differential)	TOLERANCE
1,6	5.0	N/A	55 OHM	N/A	+/-10%
4	4.0	N/A	55 OHM	N/A	+/-10%
1	5.1	9.9	N/A	100 OHM	+/-10%
4	4.1	10.9	N/A	100 OHM	+/-10%
1,6	6.1	8.9	N/A	90 OHM	+/-10%
4	5.1	9.9	N/A	90 OHM	+/-10%



 DESIGNED BY SOFER www.sofer.com.cn Tel : +86 21 - 6482 6908 Mail: design@sofer.com.cn	LAYER:	COMPANY NAME:	
	FAB DRAWING & DRILL LEGEND	ST	
	DESIGNER: Shelley	PROJECT NAME:	
	DATE: 2018.01.12	MB1246	
		PROJECT NUMBER:	REV
		D031-020A5	E

DRILL CHART: TOP to BOTTOM				
ALL UNITS ARE IN MILS				
FIGURE	SIZE	TOLERANCE	PLATED	QTY
•	6.0	+3.0/-3.0	PLATED	24
•	8.0	+3.0/-3.0	PLATED	477
•	10.0	+3.0/-3.0	PLATED	648
•	12.0	+3.0/-3.0	PLATED	601
•	30.0	+3.0/-3.0	PLATED	5
•	33.0	+3.0/-3.0	PLATED	2
•	36.0	+3.0/-3.0	PLATED	8
•	38.0	+3.0/-3.0	PLATED	18
•	40.0	+3.0/-3.0	PLATED	112
•	48.0	+3.0/-3.0	PLATED	6
•	64.0	+3.0/-3.0	PLATED	6
A	177.0	+3.0/-3.0	PLATED	4
•	28.0	+2.0/-2.0	NON-PLATED	3
•	33.46	+2.0/-2.0	NON-PLATED	2
•	38.0	+2.0/-2.0	NON-PLATED	6
•	39.0	+2.0/-2.0	NON-PLATED	1
•	40.0	+2.0/-2.0	NON-PLATED	2
•	47.0	+2.0/-2.0	NON-PLATED	13
•	58.0	+2.0/-2.0	NON-PLATED	1
•	79.0	+2.0/-2.0	NON-PLATED	4
•	125.0	+2.0/-2.0	NON-PLATED	2
•	138.0	+2.0/-2.0	NON-PLATED	4
•	177.0	+2.0/-2.0	NON-PLATED	2
•	33.0x30.0	+5.0/-5.0	PLATED	6
•	51.0x24.0	+5.0/-5.0	PLATED	2
•	59.0x33.0	+5.0/-5.0	PLATED	6
•	126.0x40.0	+5.0/-5.0	PLATED	2
•	126.0x40.0	+5.0/-5.0	PLATED	1
•	140.0x50.0	+5.0/-5.0	PLATED	4

REVISIONS			
REV	DESCRIPTION	DATE	APPROVED
1.0	EDITION ORIGINALE	2008-**-**	***



## PCB SPECIFICATIONS:

- A. MATERIAL; FR-4, ☒ TG-170 ☐ TG-150 ☐ TG-140
- B. MATERIAL FAMILY; N/A.
- C. SOLDERMASK COLOR; ☐ GREEN ☒ BLUE ☐ RED ☐ BLACK
- D. SILKSCREEN COLOR; ☒ WHITE ☐ YELLOW ☐ BLACK
- E. SURFACE FINISH; ☒ ENIG ☐ IMMERSION SILVER ☐ IMMERSION TIN
- ☐ HASL ☐ HASL(PB-FREE) ☐ GOLDEN FINGER
- F. IMPEDANCE CONTROL; ☐ NO ☒ YES (SEE IMPEDANCE TABLE FOR DETAIL INFORMATION)
- G. THROUGH VIA; PLUG THE VIAS WHICH ARE COVERED WITH SOLDERMASK ONE OR TWO SIDE.
- PLUG MATERIAL: ☒ SOLDERMASK ☐ NON-CONDUCTIVE EPOXY.
- H. STACK-UP; SEE LAYER STACK-UP SEQUENCE FOR OVERALL THICKNESS.

## PCB REQUIREMENTS:

- THIS BOARD WILL CONFORM TO:
  - IPC-A-600, CURRENT REV., CLASS II
  - IPC-6012, CURRENT REV., CLASS II
- UNLESS OTHERWISE SPECIFIED ALL HOLE DIMENSIONS APPLY AFTER PLATING. ALL HOLES SHALL BE LOCATED WITHIN .003" DIAMETER OF TRUE POSITION.
- PLATED HOLE WALL THICKNESS SHALL NOT BE LESS THAN .001 INCH MINIMUM AVERAGE, WITH NO READING LESS THAN .0008 BY CORROSS SECTION.
- MATERIAL FR4 RATING 94V-0 MINIMUM EPOXY GLASS LAMINATE.
- BOARD SHALL BE LPI SOLDER MASKED OVER BARE COPPER BOTH SIDES PER IPC-5M-840 CLASS II.
- SILKSCREEN SHALL BE PERMANENT NON-CONDUCTIVE INK AND WITH NO OVERLAP ON ANY COMPONENT PAD OR THROUGH HOLE.
- MFR, TO LEGIBLY ETCH OR STAMP/SCREEN WITH PERMANENT NON-CONDUCTIVE INK
  - A. U.L. CODE
  - B. DATE CODE
  - C. FLAMMABILITY RATING
  - D. MFR. LOGO
  - E. SUCCESSFUL ELECTRICAL BOARD TEST.
- REMOVE THE FLASHS WHICH SMALLER THAN HOLE SIZE.
- REMOVE ALL SHAPE EDGES AND BURRS .005 MAXIMUM.
- PLEASE USE THE SUPPLIED IPC 356 NETLIST TO VERIFY BOARD BEFORE FABRICATING BOARD.

UNLESS OTHERWISE SPECIFIED		SIGNATURES	DATE	LOGO		COMPANY NAME	
DIMENSIONS ARE IN INCHES TOLERANCES ON: 2 PL DECIMALS + 3 PL DECIMALS + ANGLES + FRACTIONS +		DRAWN	YY-MM-DD				
		CHECKED	YY-MM-DD				
		ENGRG	YY-MM-DD				
		ISSUED					
				TITLE		PROJECT NAME *	
SCALE 1:1		DWG NO	*****	REV **		SHEET 1 OF 1	