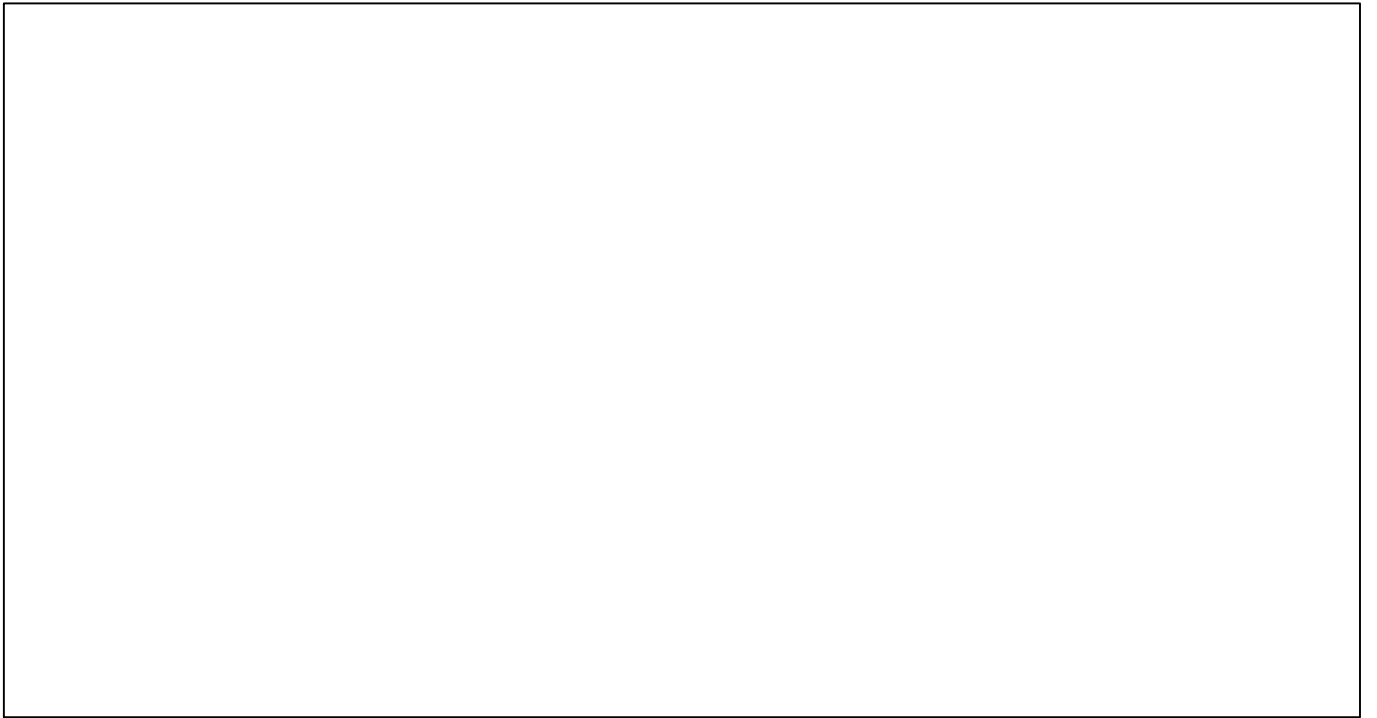


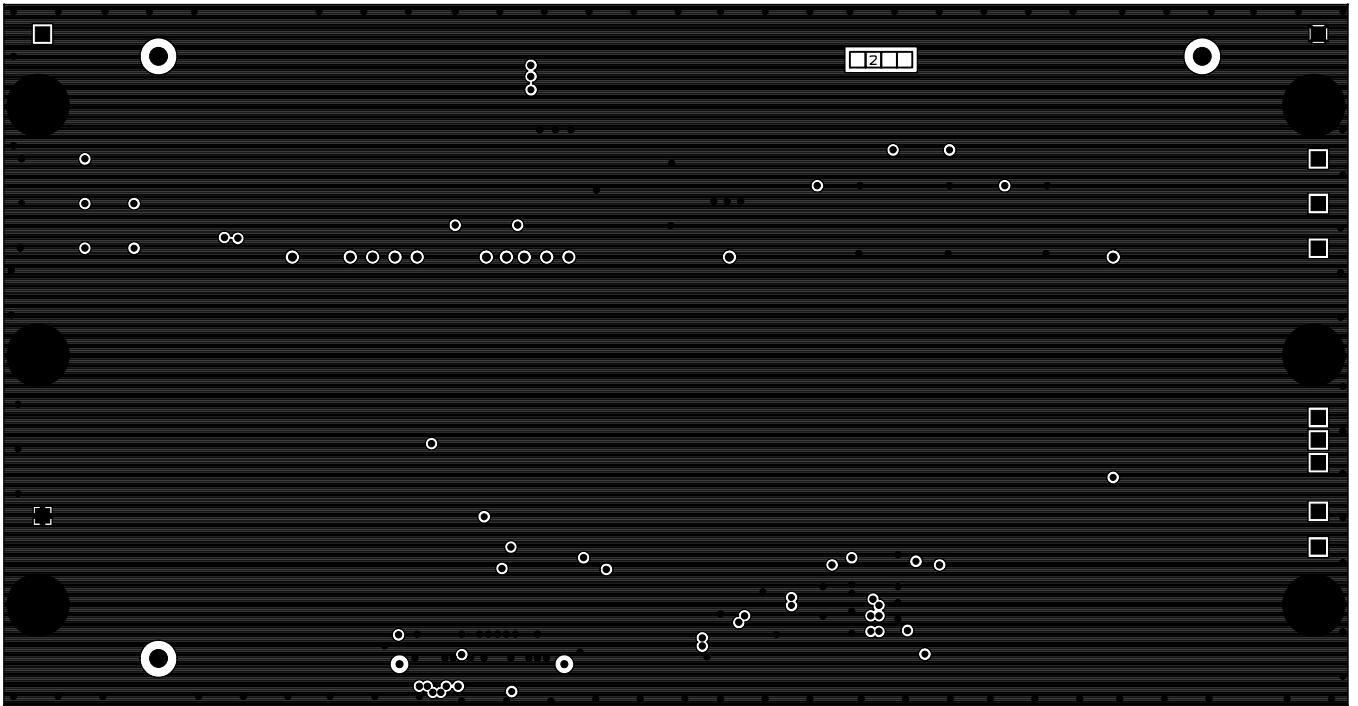
ST MICROELECTRONICS

MB1530 750P×1580 DSI 2 LANES LCD

BE11505  
BE TECH LE 07/15/2017  
SOLDER MASK  
BOTTOM LAYER

C



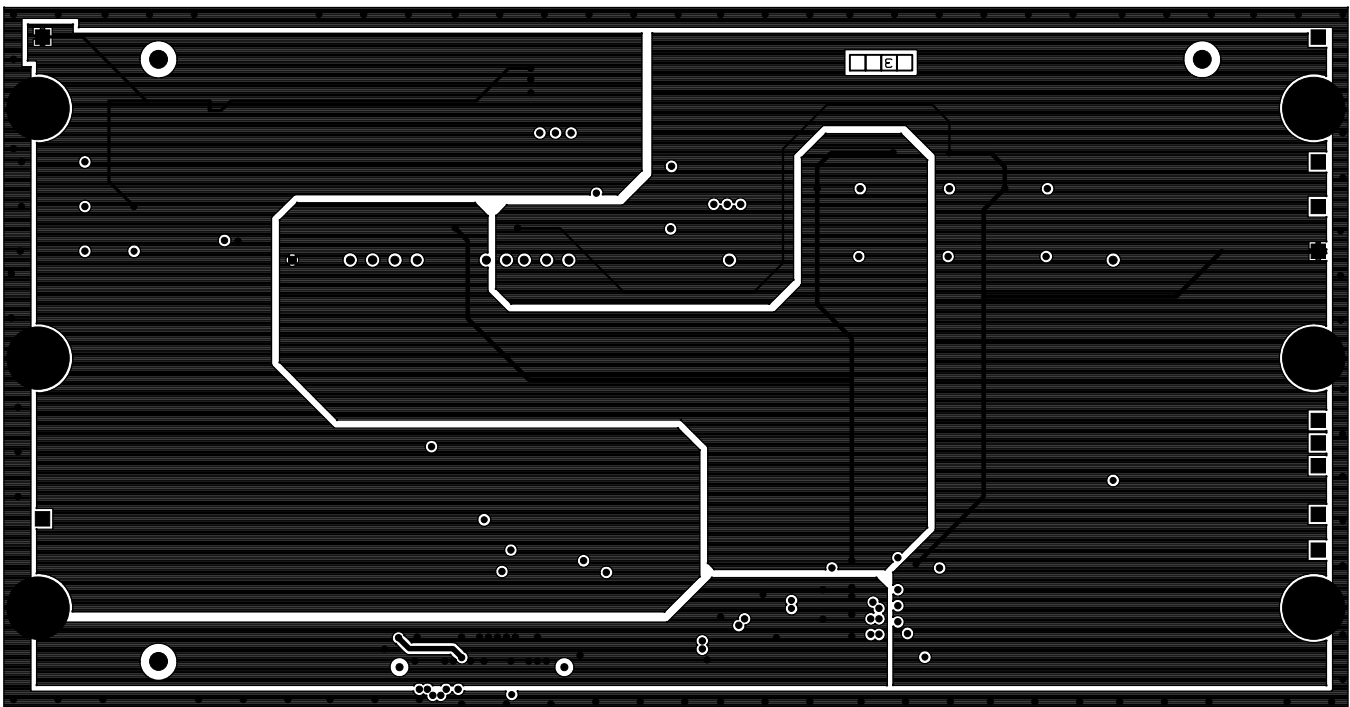


MB1230 720P×1280 DSI 2 LANES LCD  
ST MICROELECTRONICS

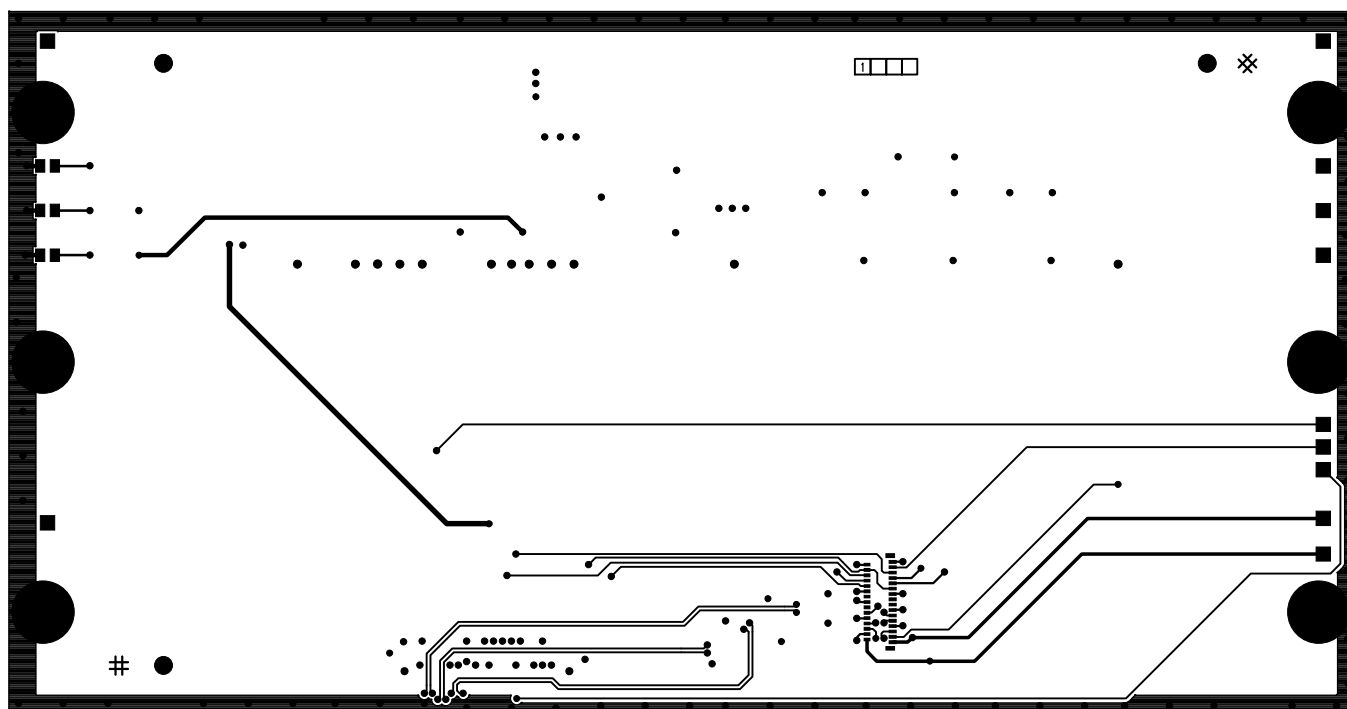
LAYER 2

BE TECH LE 07/12/2017  
BET171202

C



ST MICROELECTRONICS  
MB1530 750P×1580 DSI 2 LANE2 LCD  
BE115205  
BE TECH LE 02/15/2017  
LAYER 3  
C

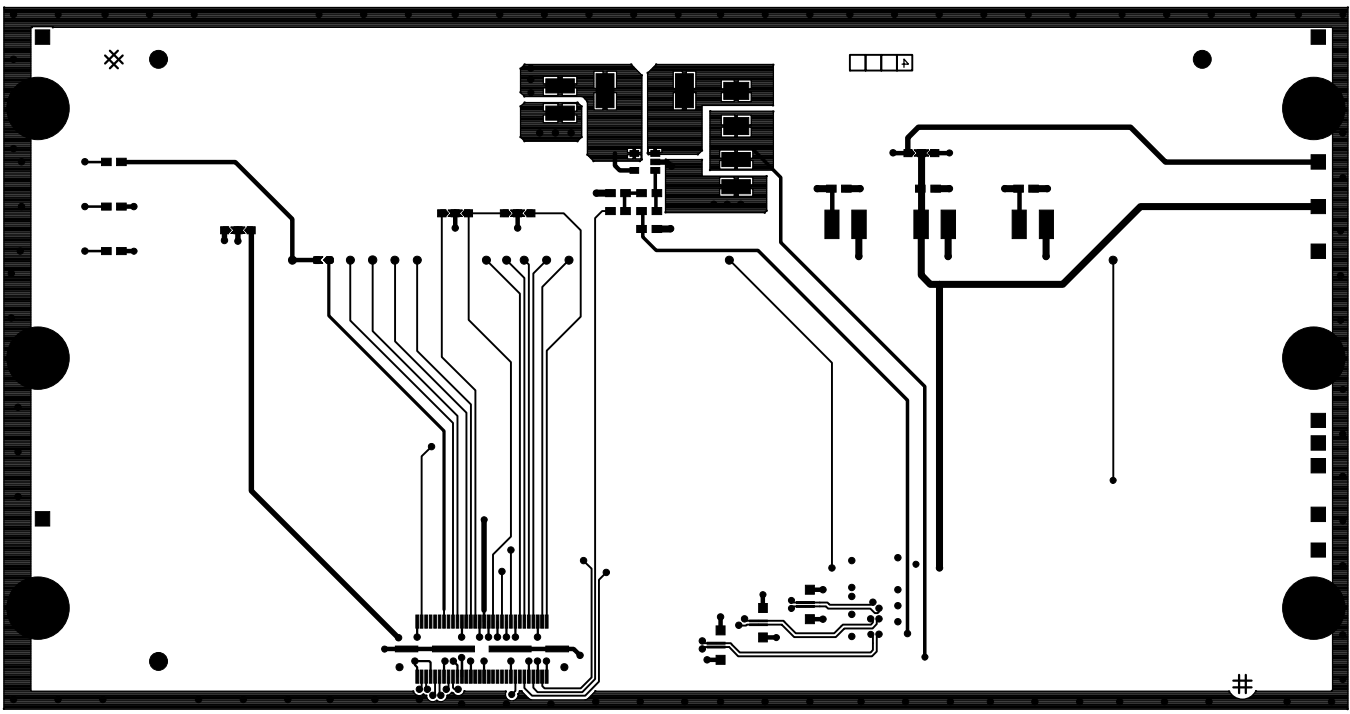


MB1230 720P x 1280 DSI 2 LANES LCD  
ST MICROELECTRONICS

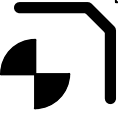
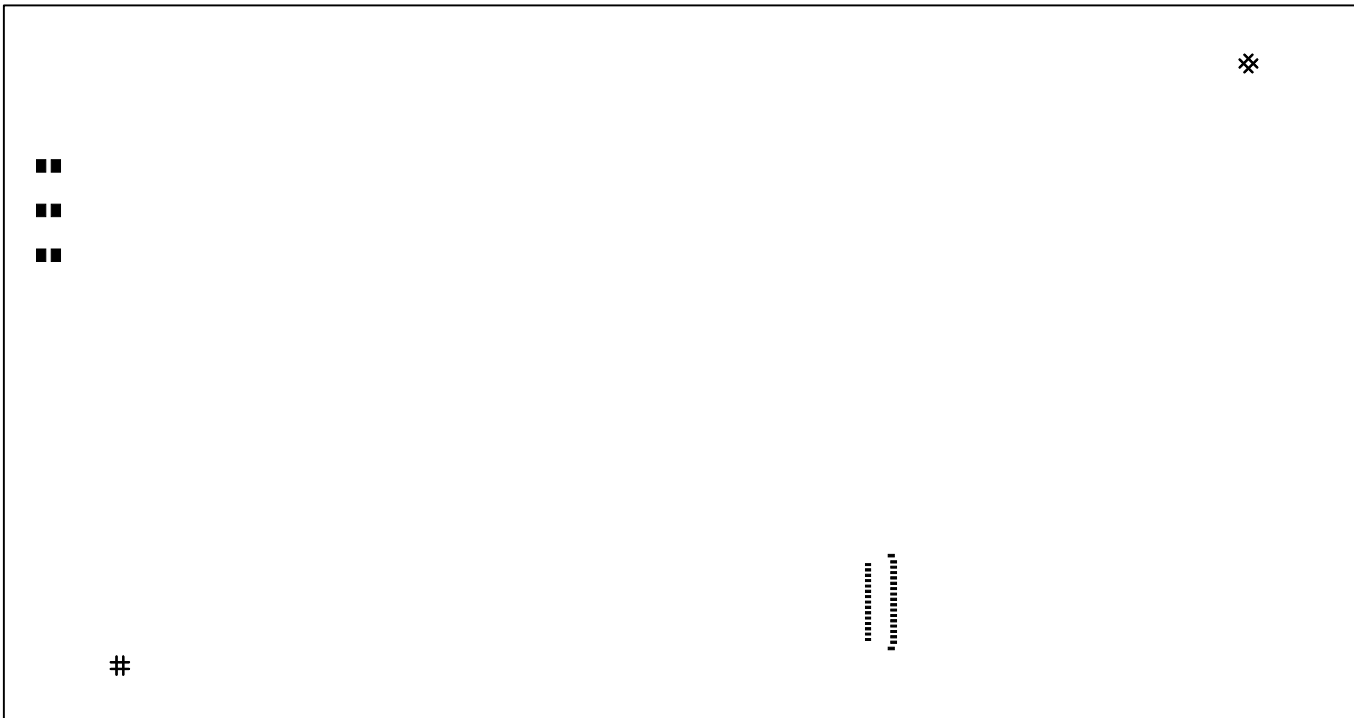
TOP LAYER 1

C

BE TECH LE 07/12/2017  
BET171202



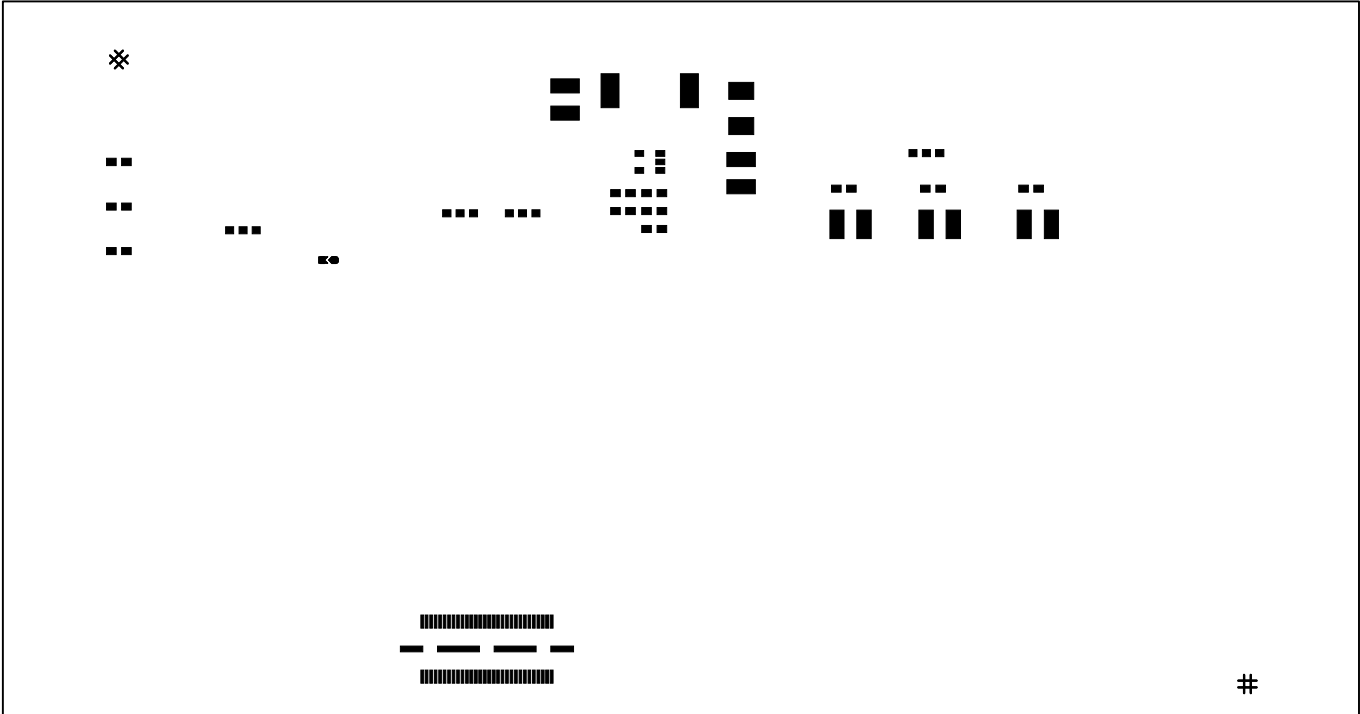
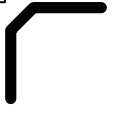
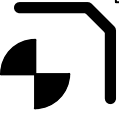
2T MICROELECTRONICS  
MB1530 750P×1580 D21 2 LANE2 LCD  
BE11505  
BE TECH LE 02\15\2017  
BOTTOM LAYER 4  
C



MB1230 720P×1280 DSI 2 LANES LCD  
ST MICROELECTRONICS

TOP LAYER  
SOLDER PASTE  
BE TECH LE 07/12/2017  
BET171202

C





TP4  
□  
5V

D2  
□  
3V3  
D3  
□  
5V  
D1  
□  
VCC  
IO

TP6  
□  
GND

TP7  
□  
GND

TP3  
□  
3V3  
TP1  
□  
VCCIO  
TP2  
□

WI  
□  
1 2 3  
LED  
□  
K  
A

J2  
┐

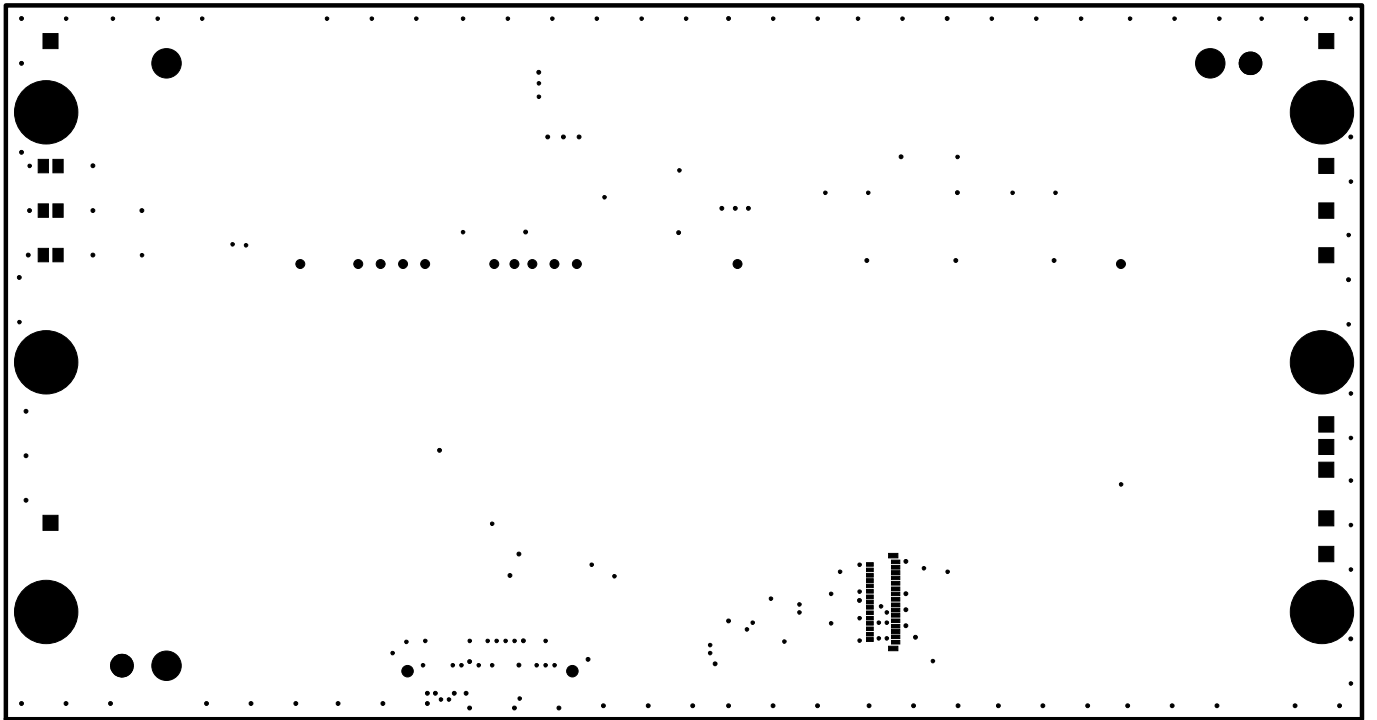
└ •

MB1230 720P×1280 DSI 2 LANES LCD  
ST MICROELECTRONICS

TOP LAYER SILKSCREEN C

BE TECH LE 07/12/2017  
BET171202





MB1230 720P x 1280 DSI 2 LANES LCD  
ST MICROELECTRONICS

TOP LAYER SOLDER MASK C  
BE TECH LE 07/12/2017  
BET171202