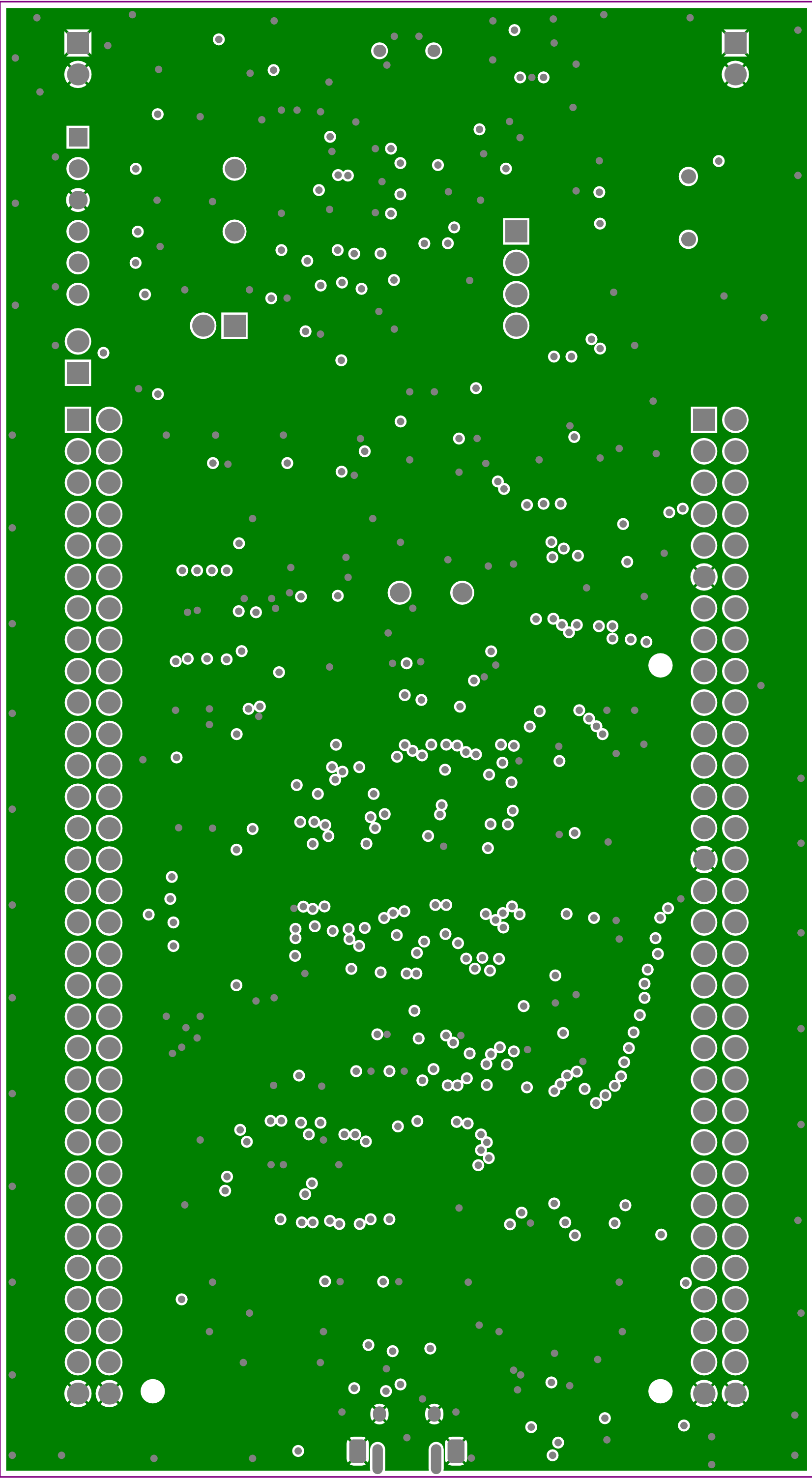
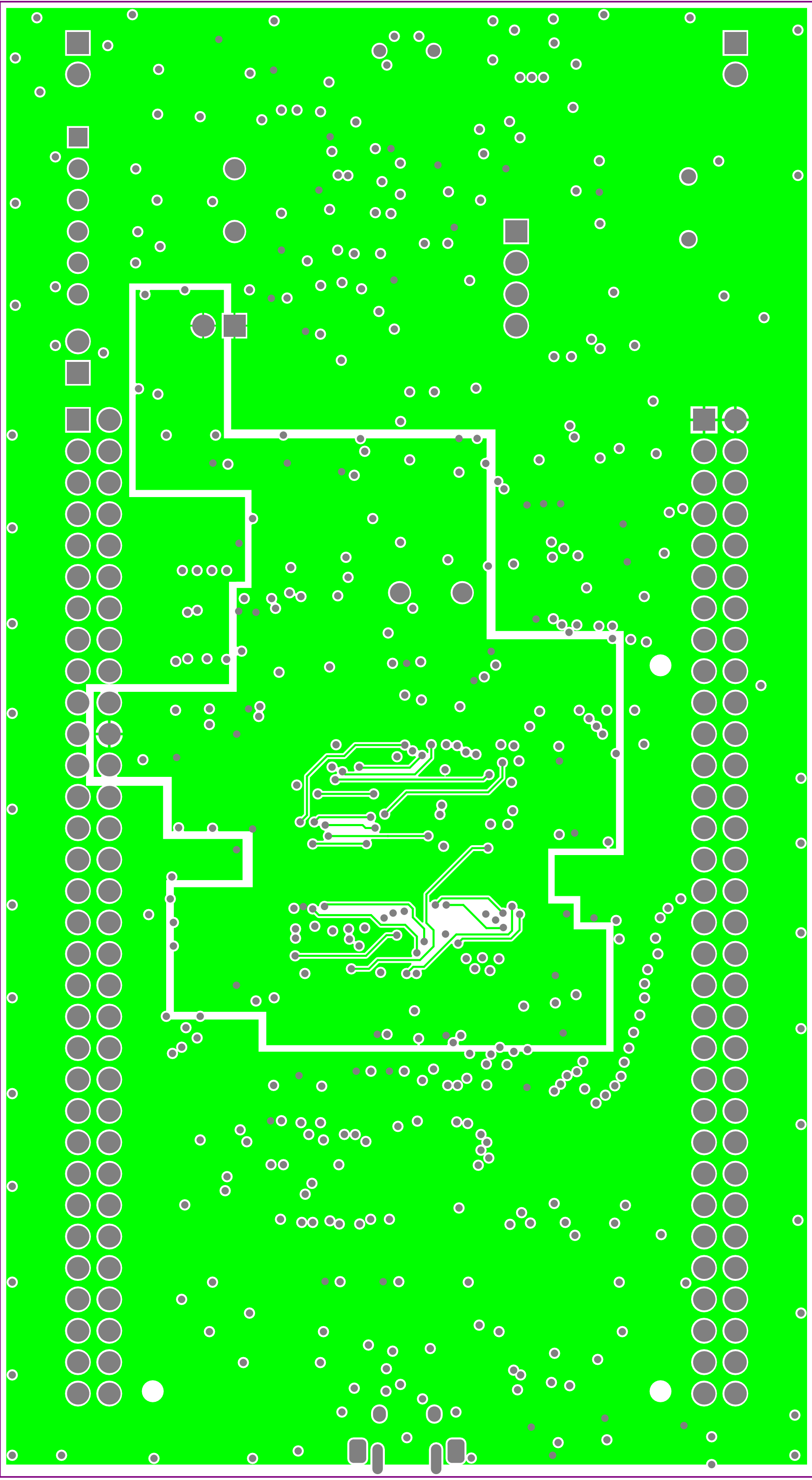


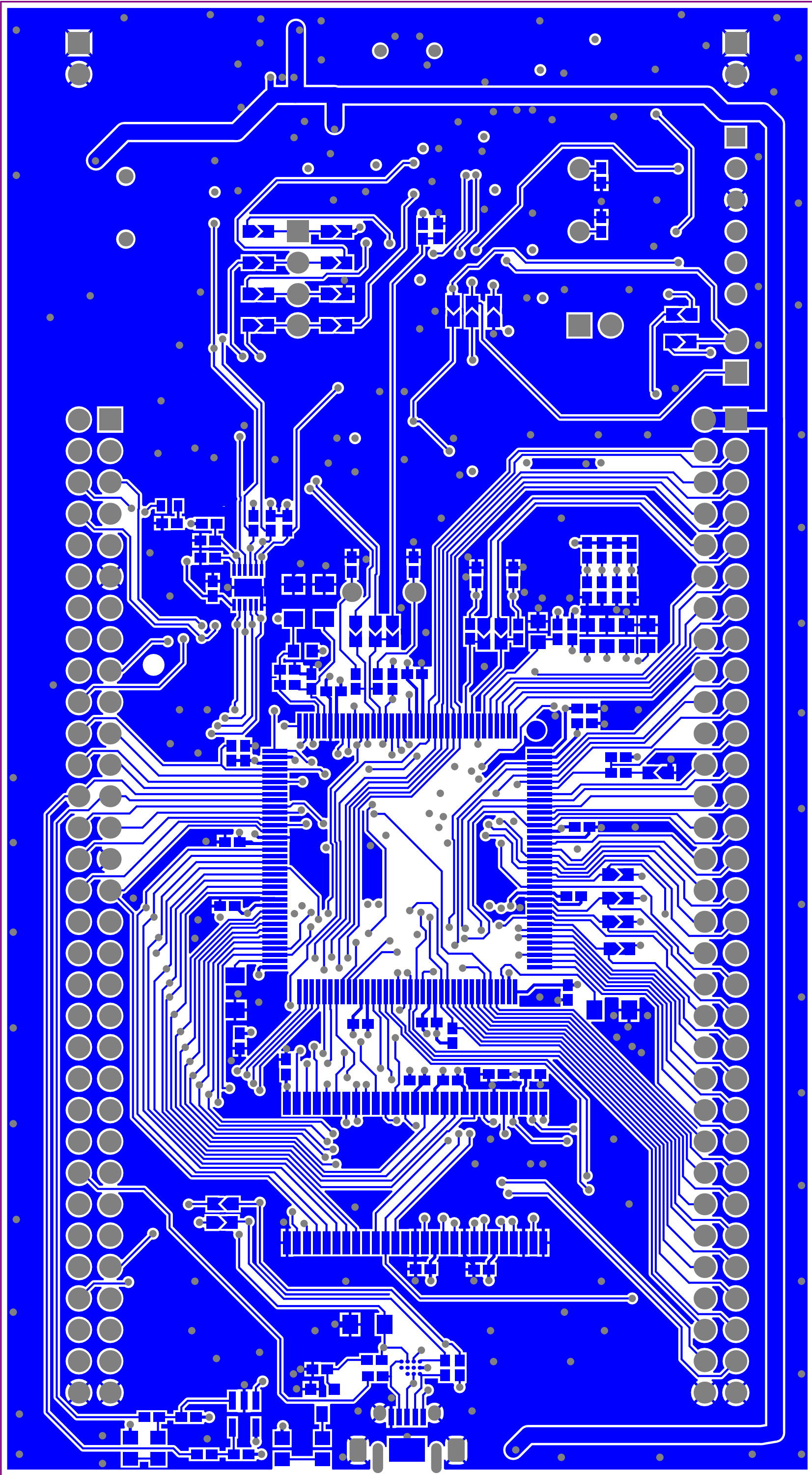
TOP LAYER

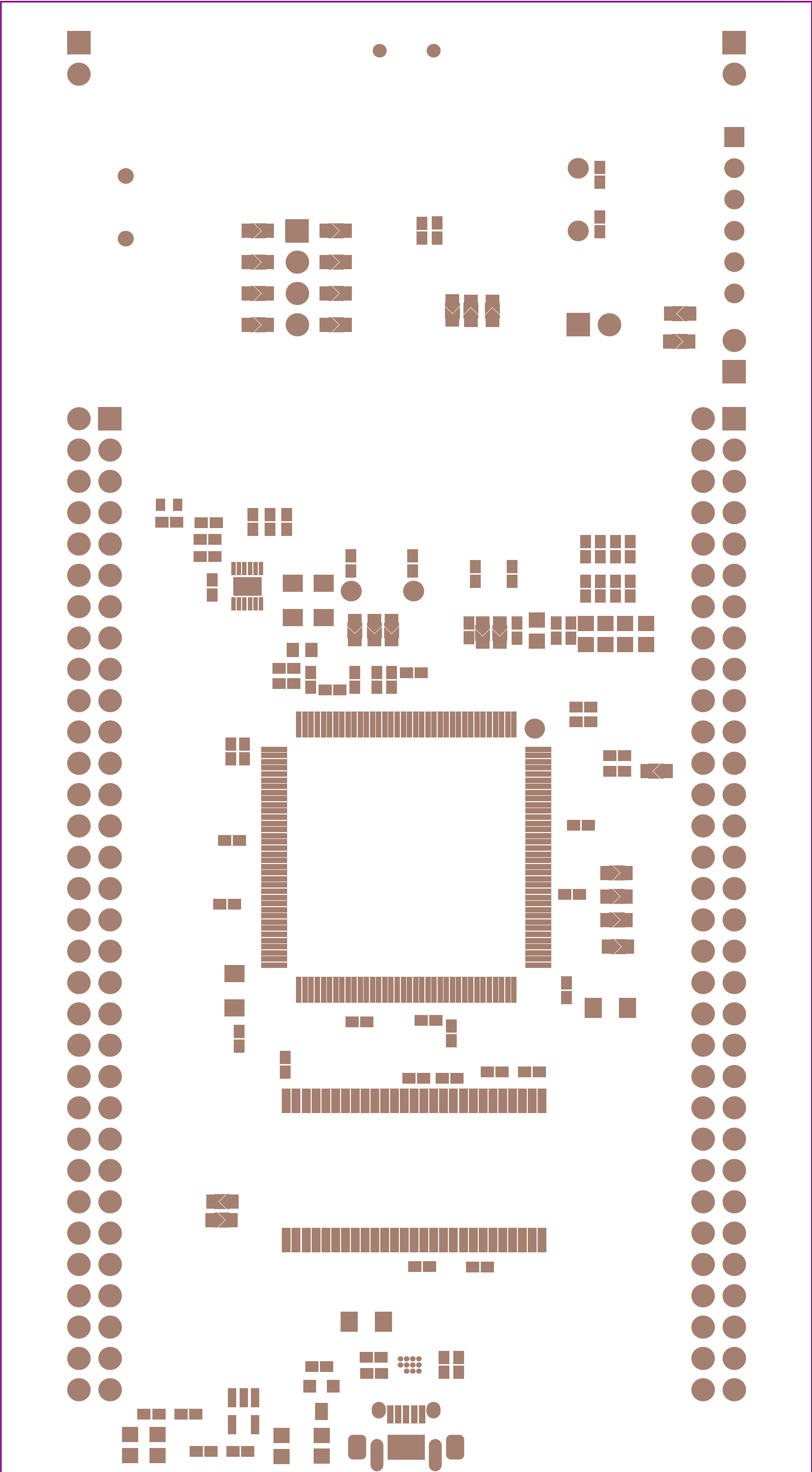


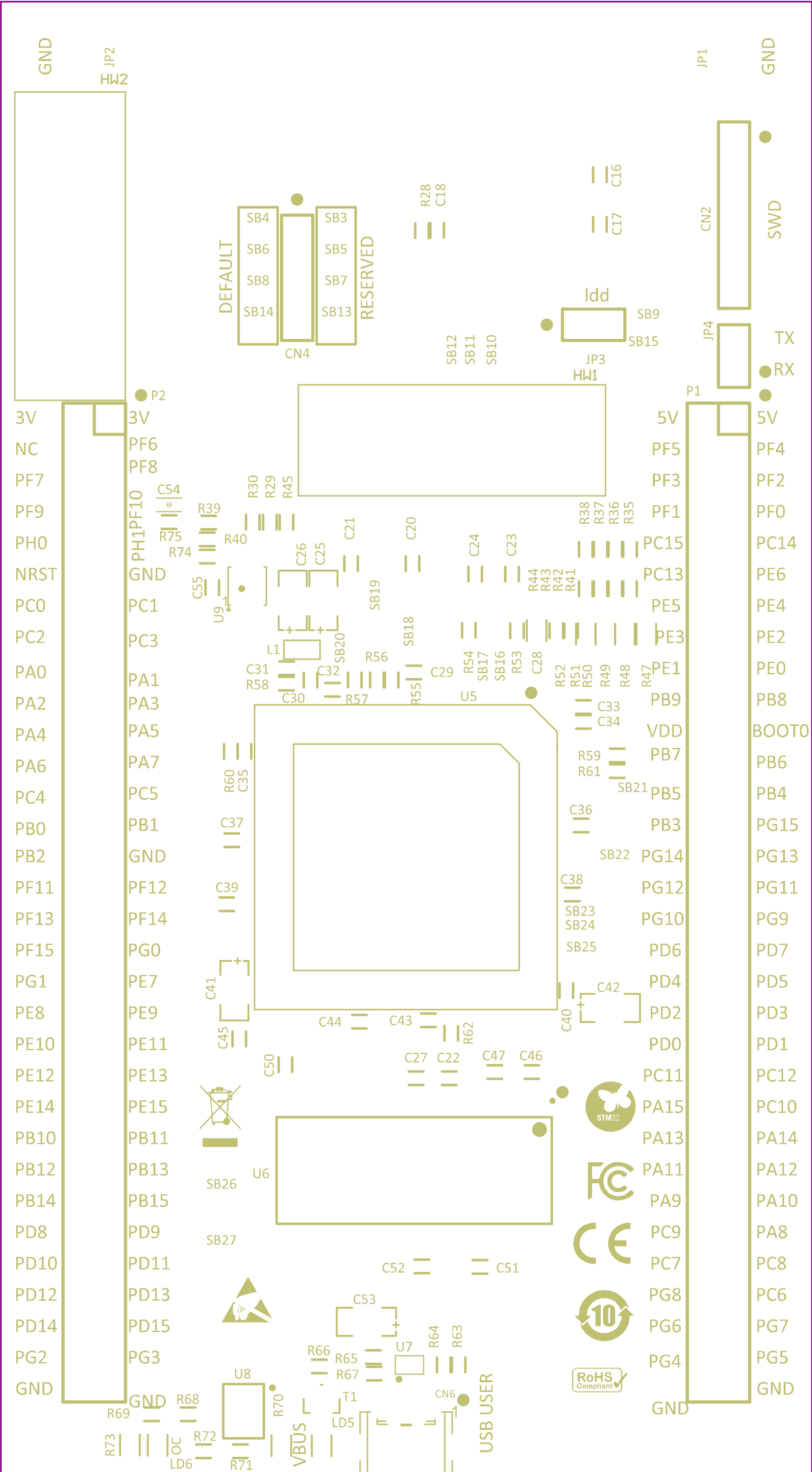
INNER LAYER 2



INNER LAYER 3

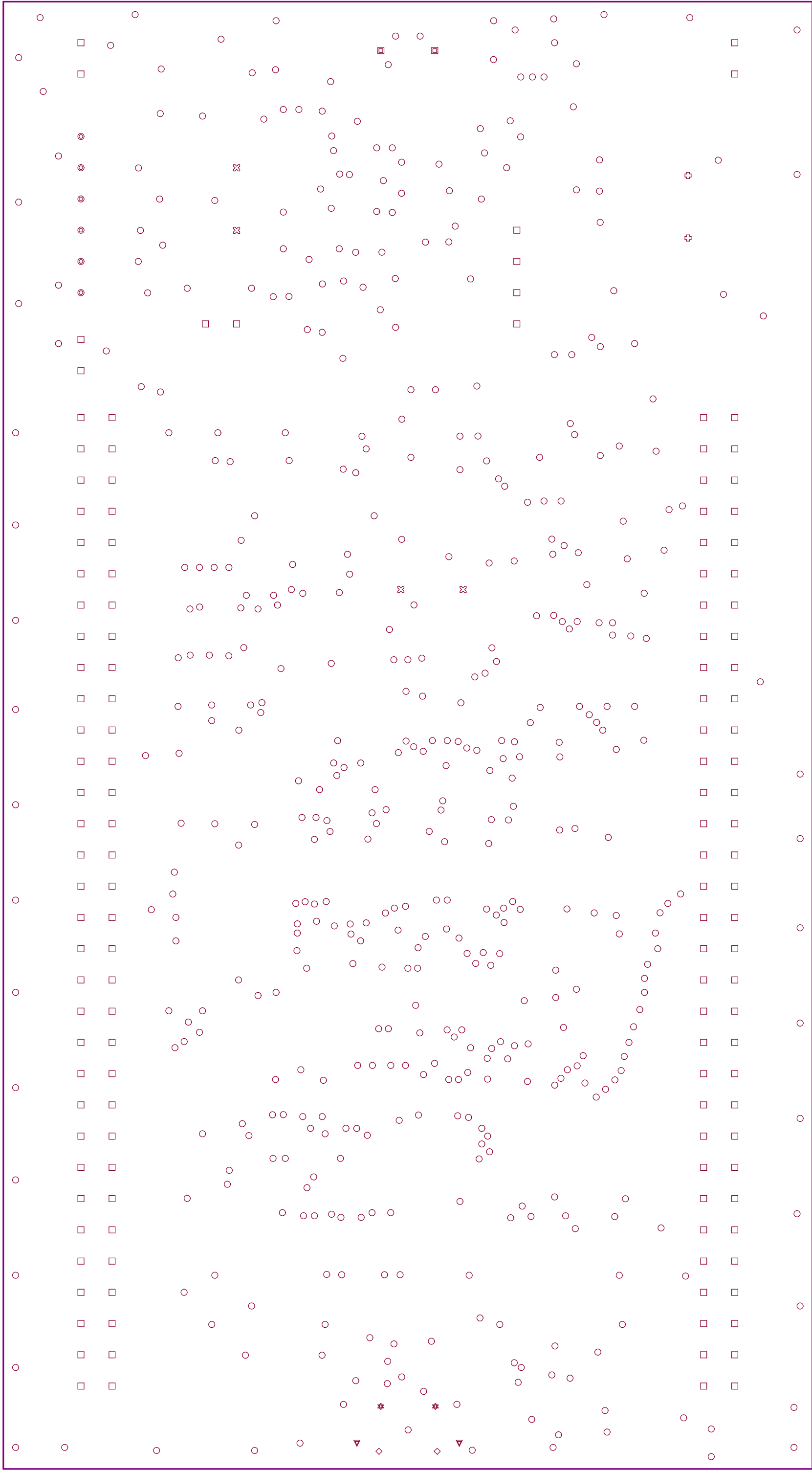






Symbol	Hit Count	Finished Hole Size	Plated	Drill Layer Pair
○	500	0.30mm	PTH	TOP - Bottom
▼	2	0.60mm	PTH	TOP - Bottom
✳	2	0.65mm	PTH	TOP - Bottom
⊠	4	0.70mm	PTH	TOP - Bottom
◇	2	0.85mm	NPTH	TOP - Bottom
◎	6	0.90mm	PTH	TOP - Bottom
▣	2	1.00mm	NPTH	TOP - Bottom
□	140	1.00mm	PTH	TOP - Bottom
⊕	2	1.20mm	NPTH	TOP - Bottom
	660 Total			

Slot definitions : Routed Path Length = Calculated from tool start centre position to tool end centre position.
Hole Length = Routed Path Length + Tool Size = Slot length as defined in the PCB layout



Layer	Name	Material	Thickness
	Top Silk		
	Top Solder	Solder Resist	0.010mm
1	TOP	Copper	0.012mm
	Dielectric 1	FR-4	0.127mm
2	L2	Copper	0.035mm
	Dielectric2	FR-4	1.200mm
3	L3	Copper	0.035mm
	Dielectric3	FR-4	0.127mm
4	Bottom	Copper	0.012mm
	Bottom Solder	Solder Resist	0.010mm
	Bot Silk		

Cu base

Cu base