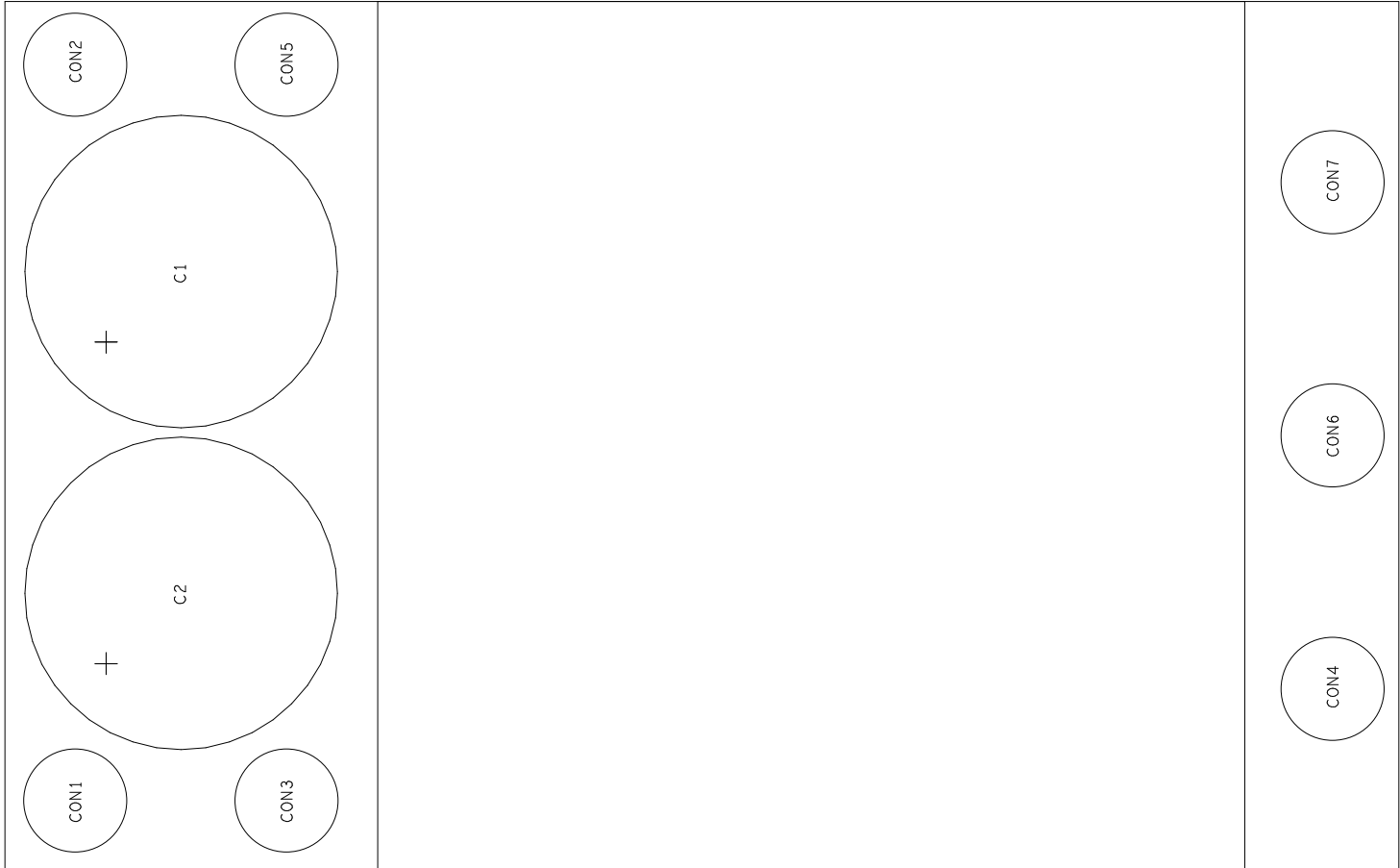
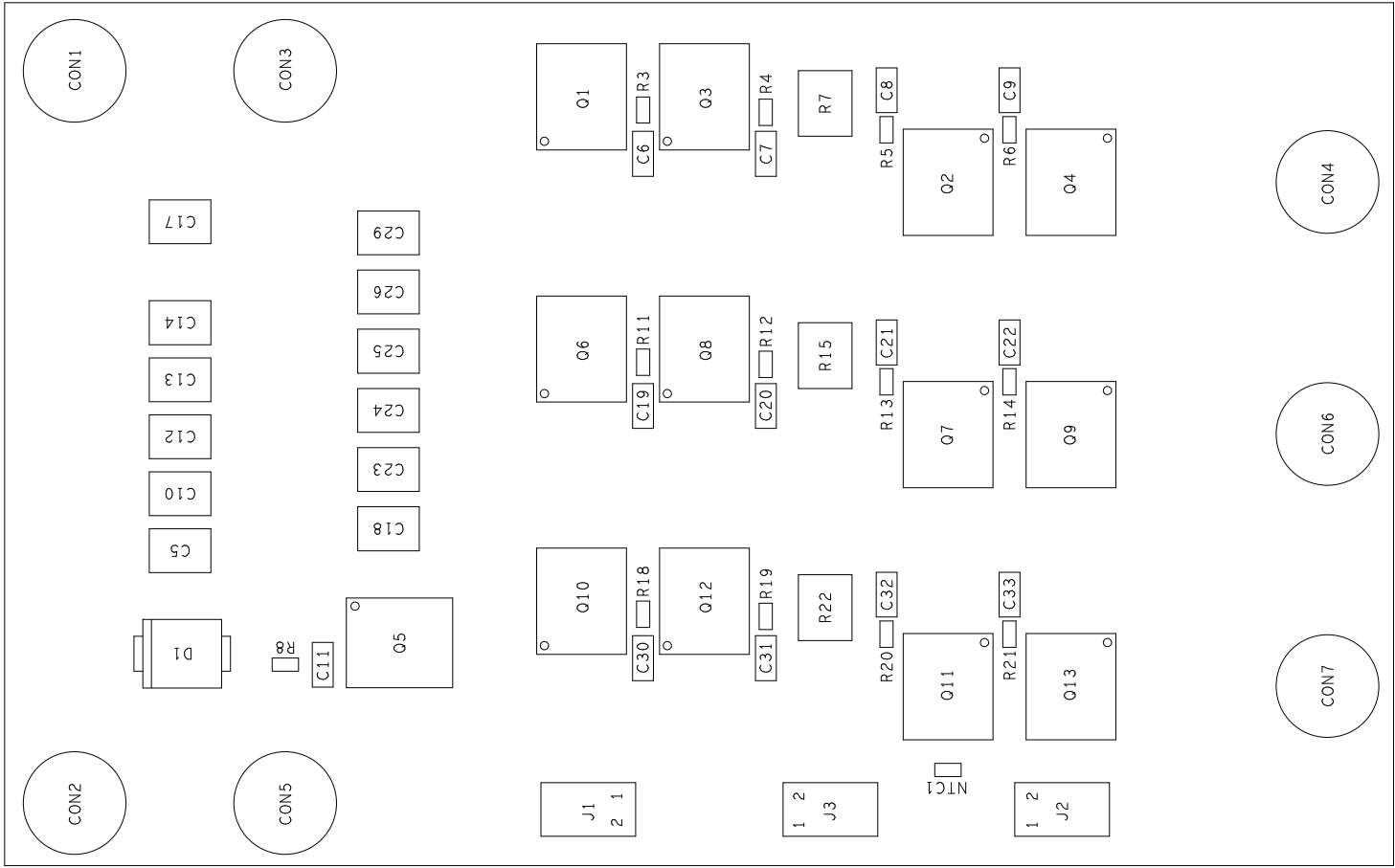


- TOP



- BOTTOM



- Heatsink must be cutted and drilled as BOM's indication
- Insulator must be cutted and drilled (See Heatsink)
- Stick the insulator on bottom side of Heatsink
- Put Heatsink on Top side of P.C.B.
- Insert 4 screws from bottom side of P.C.B. screwing them in the Heatsink

REVISION DATE



APMS Group AGRATE B. ITALY  
ALL RIGHTS STRICTLY RESERVED. REPRODUCTION OR ISSUE TO THIRD PARTIES IN ANY FORM WHATEVER IS NOT PERMITTED WITHOUT WRITTEN AUTHORIZATION FROM STMicroelectronics.

Drawn RIGO M. date 28-June-2024  
Approved date

Description

ASSEMBLY DRAWING

Symbol

STSPIN32G4

Group SERVO\_INV1

ISO  
SCALE: 2.5 : 1  
REV. 1.0

Material

Treatment and surface finishing

TOLERANCE UNLESS NOTED  
UNIT=MM

linear 0 >10 >50 >200  
<10 <50 <200 >200  
ANG. LES.

midle ±0.1 ±0.2 ±0.3 ±0.5 ±1°  
accurate ±0.05 ±0.1 ±0.15 ±0.25 ±30°