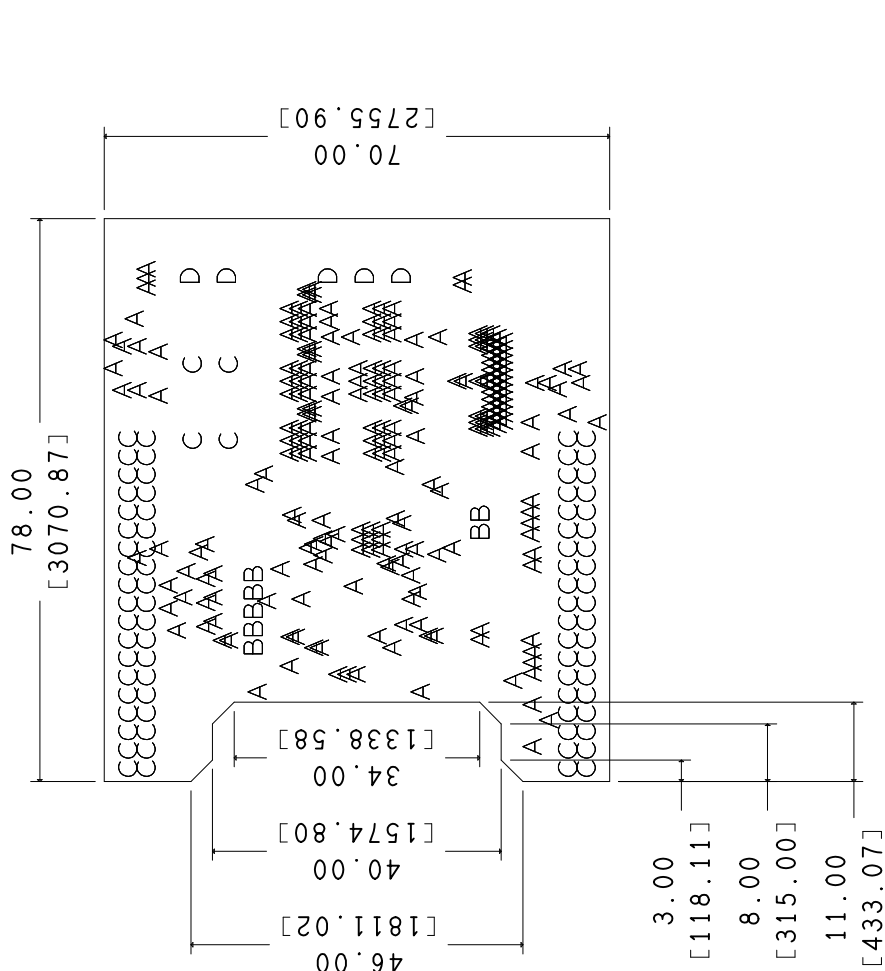


UNIT : mm
(mils)



FABRICATION NOTE:

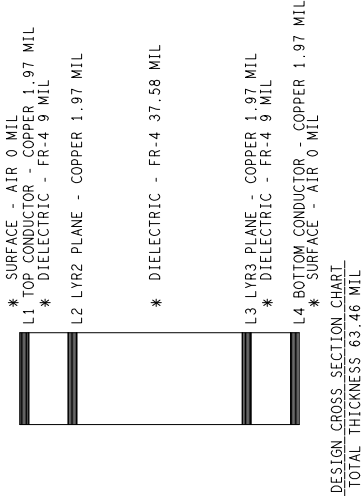
- 1:FABRICATE USING LATEST REVISION OF IPC-6012A CLASS 2 OR ABOVE
- 2:FABRICATE USING MASTER ARTWORK EVLDRIVE102P R1 FOR CIRCUIT PATTERN. NO DEVIATION FROM MASTER ARTWORK ARE PERMITTED WITHOUT WRITTEN APPROVAL FROM AN AUTHORIZED STMicroelectronics REPRESENTATIVE
- 3:VENDOR MUST BE UL QUALIFIED AND BOARDS MUST BE IDENTIFIED WITH APPROPRIATE VENDOR UL IDENTIFICATION MARK, LOT OR JOB NUMBER AND PCB MATERIAL FLAMMABILITY RATING (94V-0) MINIMUM
- 4:MATERIAL: FR4 RoHS COMPLIANT MINIMUM 125 C
- 5:SEE "DETAIL "A"" FOR BOARD THICKNESS, COPPER WEIGHT AND LAYER CONSTRUCTION
- 5:BLUE SOLDER MASK BOTH SIDE OF BOARD WITH LIQUID PHOTO IMAGEABLE SOLDERMASK
- 6:FINISH: HAL Lead Free
- 7:FOR SMT COMPONENTS WITH PIN PITCH OF 0.019 INCH OR MORE NO GANG RELIEF OF SOLDER MASK IS ALLOWED
- 8:SILKSCREEN TO BE WHITE NON CONDUCTIVE, EPOXY INK OR EQUIVALENT
- 9:THIS IS NOT A CONTROLLED IMPEDANCE BOARD
- 10:ON BOTTOM PCB MUST BE IDENTIFIED MANUFACTURER LOGO AND PCB TYPE (MEANS OF MATERIAL TYPE INDICATED ON THE YELLOW CARD DOCUMENT)
- 11:VENDOR TO PROVIDE BOARD STACK-UP FOR IMPEDANCE APPROVAL PRIOR TO BOARD FABRICATION, STACK UP AND IMPEDANCE TO INCLUDE COPPER PLATING ON OUTER LAYERS.FAB DRAWING STACK-UP DIMENSION ARE PROVIDED FOR REFERENCE ONLY VENDOR TO PROVIDE BOARD FOR IMPEDANCE TEST RESULTS AND COUPON
- 12:TEARDROPPING OF VIAS AND PADS ALLOWED AT PAD TO TRACE INTERSECTION TO INSURE A 2MIL ANULAR RING AT THE JUNCTION
- 13:REMOVE SILKSCREEN FROM SOLDERABLE SURFACE
- 14:ALL BOARD TO BE 100% ELECTRICALLY NETLIST TESTED FOR OPENS AND ON SHORTS. APPLY TEST STAMP IN REFERENCED AREA
- 15:THIS BOARD SHALL BE FULLY COMPLIANT WITH UL796

DRILL CHART: TOP To BOTTOM			
ALL UNITS ARE IN MILS			
FIGURE	FINISHED SIZE	PLATED	QTY
A	13.0	PLATED	252
B	35.43	PLATED	7
C	40.0	PLATED	80
D	55.0	PLATED	5

TOTAL HOLES: 344

Finished Hole Tolerance - All units are in Inches -			
Finish Hole Diameter	Plated Through Finish Hole Diameter	Non Plated Through Finish Hole Diameter	
0.008" -0.013"	+0.002/-FHS"	+/-0.002"	
0.014" -0.063"	+/-0.003"	+/-0.002"	
0.064" -0.156"	+/-0.004"	+/-0.003"	
0.157" -0.250"	+/-0.007"	+/-0.004"	
0.251" and up	+/-0.007"	+/-0.005"	
0.125"	Non Plated Only	+0.003/-0.000"	

DETAIL "A"



REVISION DATE



ASP, AMS Group AGRATE B. ITALY

ALL RIGHTS STRICTLY RESERVED. REPRODUCTION OR ISSUE TO THIRD PARTIES IN ANY FORM WHATEVER IS NOT PERMITTED WITHOUT WRITTEN AUTHORIZATION FROM STMicroelectronics.

Drawn Rigo M. date 09-Oct-2023
Approved date

Description

DRILLING AND PROFILING

Symbol

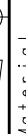
STDRIVE102P

Group

Eval Board

TOLERANCE UNLESS NOTED

UNIT=MM (MILS)



Material

ANG. LES.

0 >10 >50 >200

<10 <50 <200

linear

midle

accurate

±0.1 ±0.2 ±0.3 ±0.5 ±1°

±0.05 ±0.1 ±0.15 ±0.25 ±30°

Treatment and surface finishing

SCALE:

1 : 1

REV.

1.0