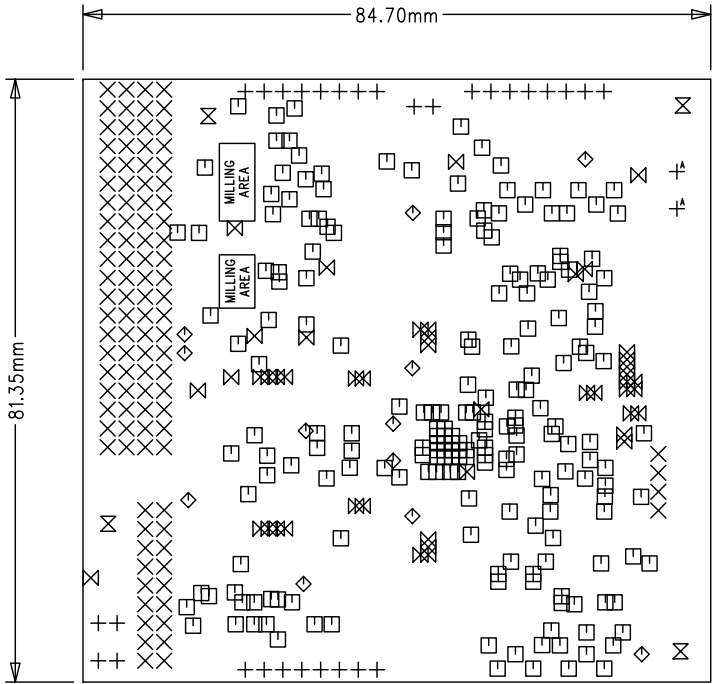



PCB TECHNICAL SPECIFICATIONS

- LAMINATE TYPE : FR4
- TOTAL SIZE (mm) : 84.70 x 81.35
- AREA SURFACE (cmq) : 68.9
- THICKNESS : 1.60mm (+/-10%)
- Nr. OF LAYERS : 4
- FINISHING : HASL Lead Free
- FINISHED COPPER THICKNESS ALL LAYERS (um) : 70
- SOLDER MASK : TOP+BOTTOM (GREEN)
- SILKSCREEN TOP: YES, WHITE
- SILKSCREEN BOTTOM: NO
- Drills tolerances (if not specified): +/-0.08mm

- Build Panel of 2x2 units (in scoring)
with internal and external 5.0mm free strips
- Whole panel size: 184.4 x 177.7 mm



SIZE	QTY	SYM	PLATED	TOL
0.3	207	□	YES	+/- 0.08
0.4	47	⊠	YES	+/- 0.08
0.7	12	◇	YES	+/- 0.08
0.9	30	+	YES	+/- 0.08
1	102	⊗	YES	+/- 0.08
1.3	2	⊕ ^A	YES	+/- 0.08
3.5	4	⊠	NO	+/- 0.08

		REV: 1
	DESIGNER: 2BiTS	DATE: 07-01-2019
	Description: L5964 Power Board	
	PCB CODE: 2B180522 R.1	