

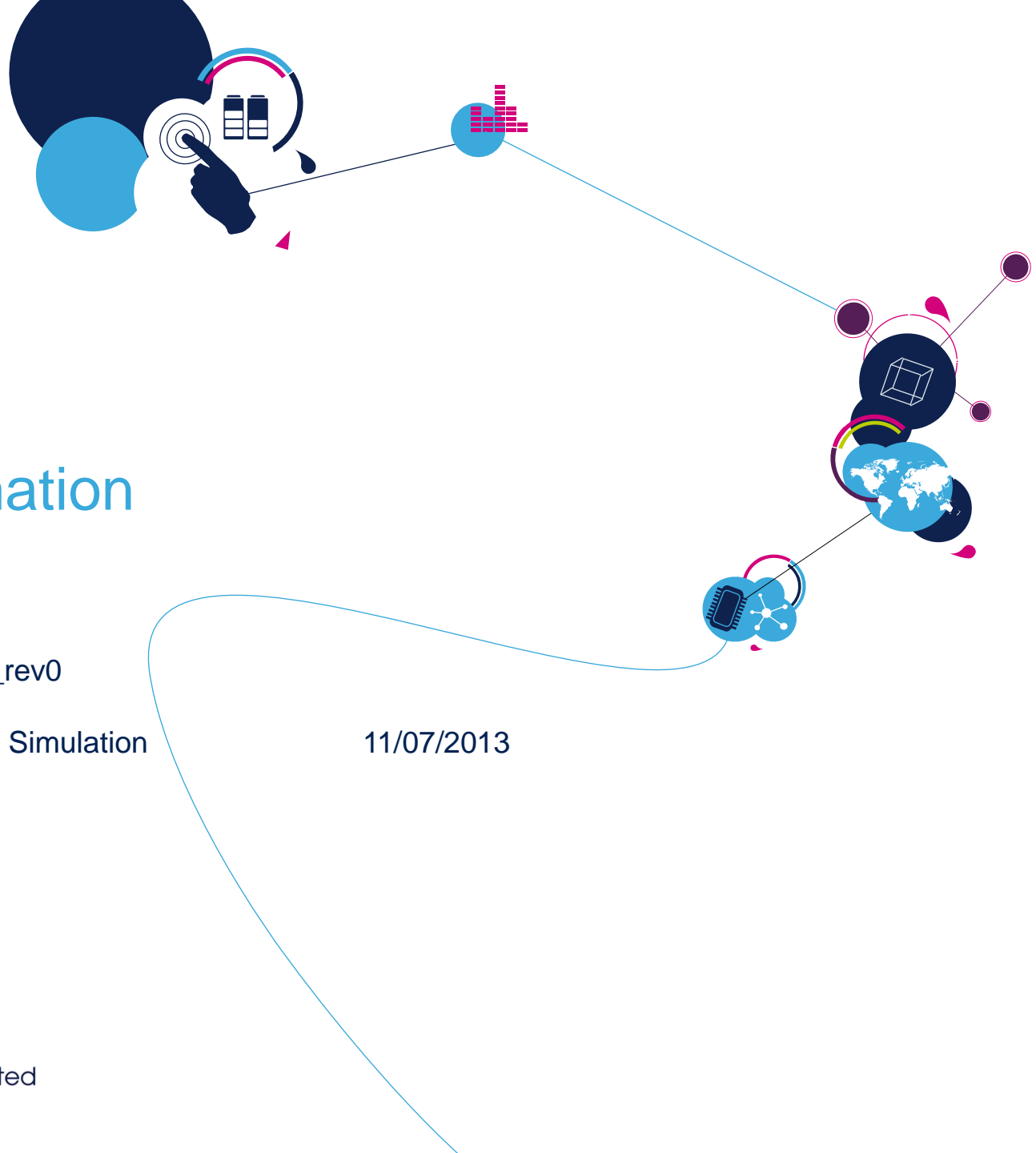
SD2931-10

Model information

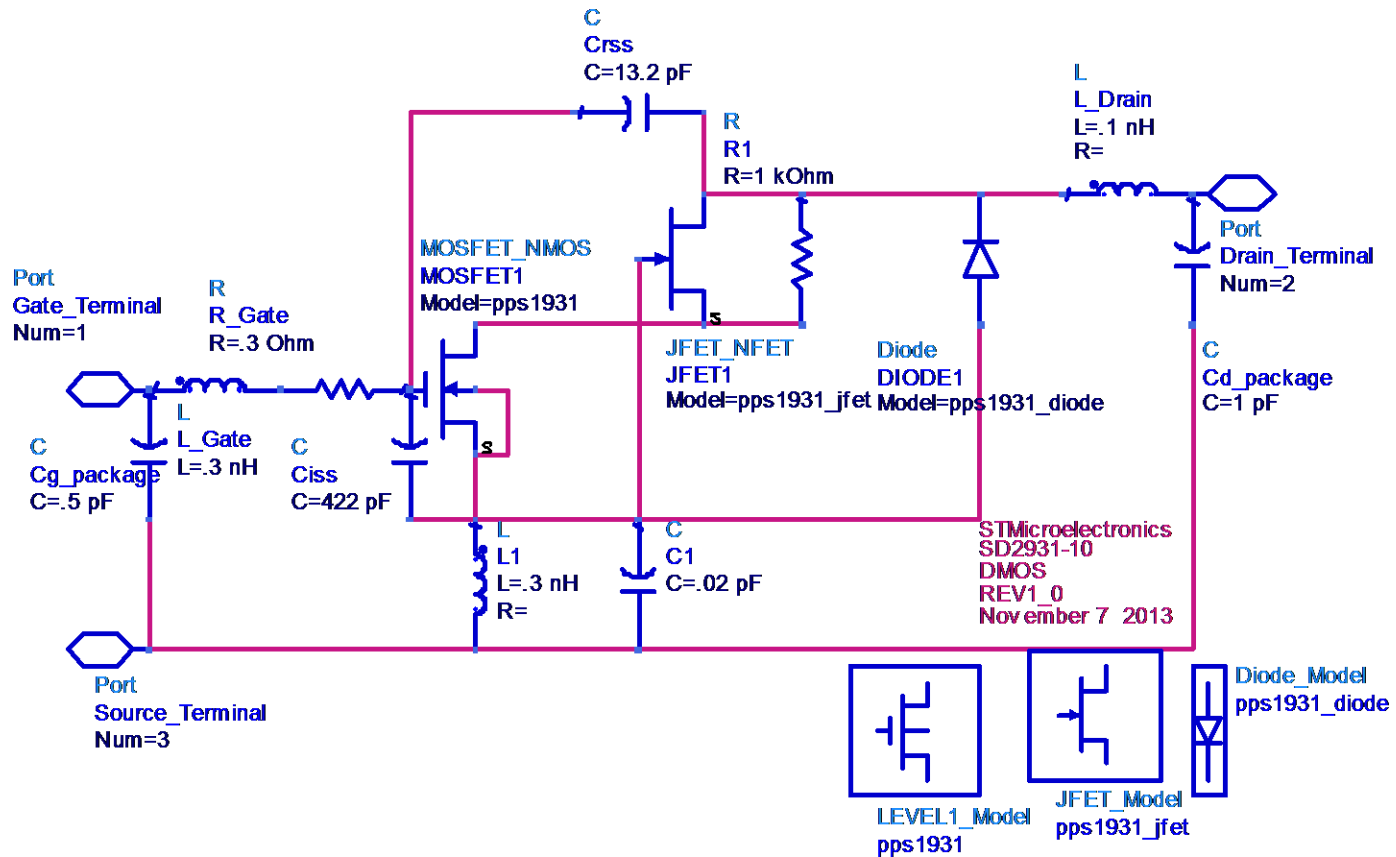
qtn-ms13032_rev0

RF Model and Simulation

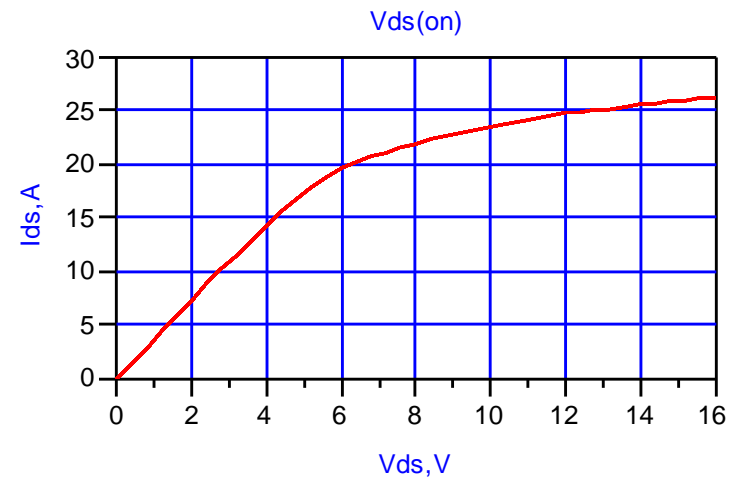
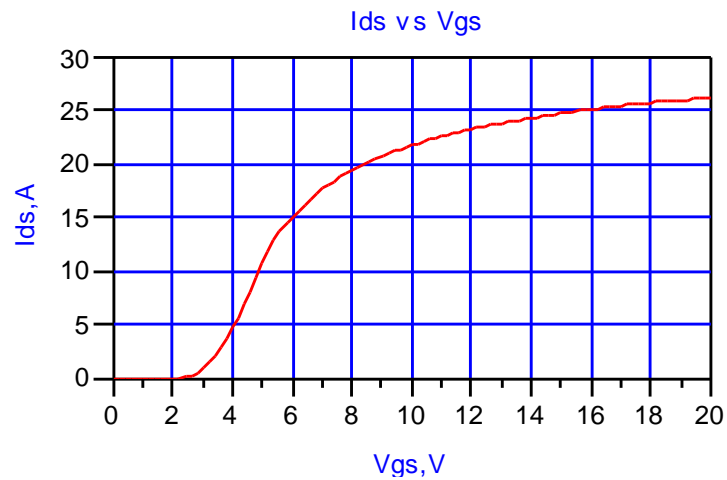
11/07/2013



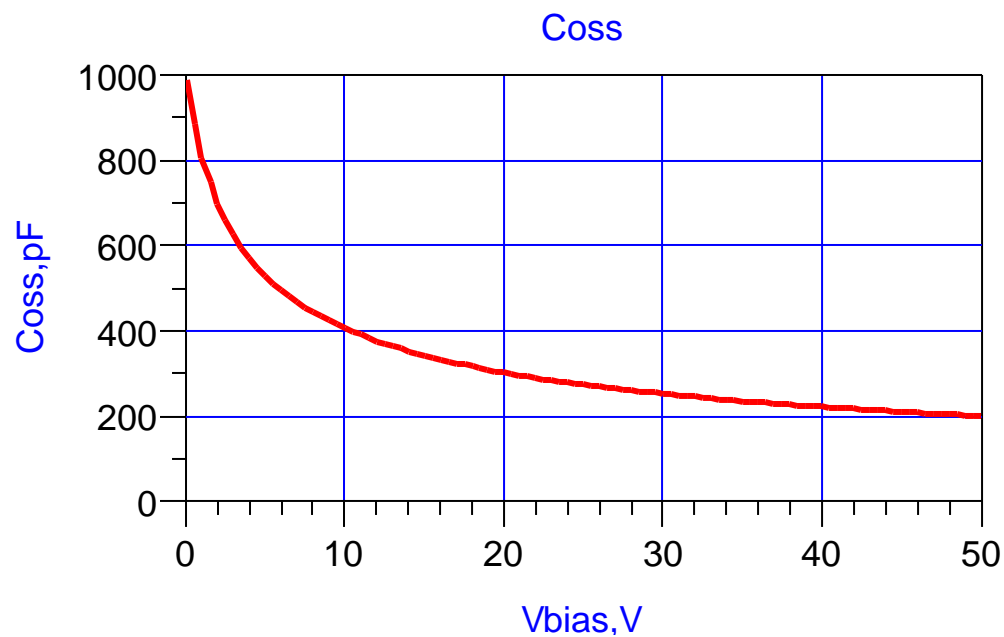
SD2931_10_rev1_0 model



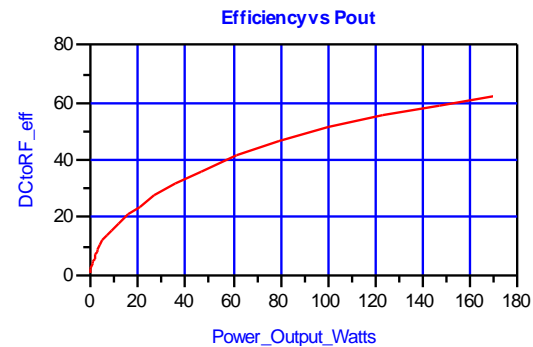
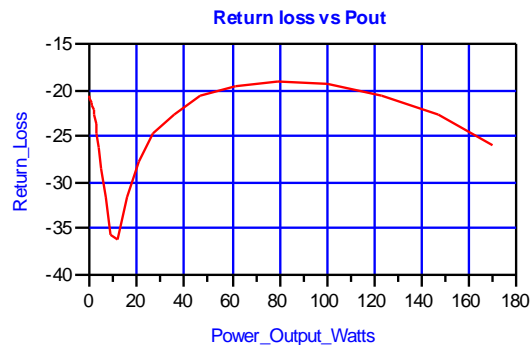
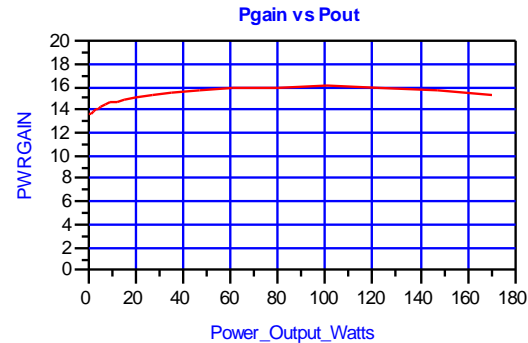
SD2931_10



SD2931_10



SD2931_10 , 175 MHz , Large signal;



SD2931_10 Generic netlist

```
*SD2931_10_rev1_0
*November 7 ,2013
*STMicroelectronics
*port 1 = GATE , 2 = Drain , 3 = Source
*
.SUBCKT SD2931_10 10 20 30
LGATE1 10 11 .3N
RGATE1 11 12 .3
CG1 10 30 .5P
CRSS1 12 17 13.2P
CISS1 12 14 422P
LS1 14 30 0.3N
CS1 14 30 .02P
R1 17 13 1K
LD1 17 20 .1N
CD1 20 30 .5P
MOS1 13 12 14 14 mos_1931 L=.2UM W= 700mM
JFET1 17 14 13 jf_1931
DBODY1 14 17 d_1931
.MODEL mos_1931 nmos (vto=2.156 KP=7.68E-7 LAMBDA=.005 RD=0 RS=0)
.MODEL jf_1931 njf (VTO=-4.19 BETA=2.17 LAMBDA=1.06 Rd=.1 Rs=.1)
.MODEL d_1931 d (CJO=1000p RS=0.25 VJ=1.88 M=0.50904 BV=142)

.ENDS
```