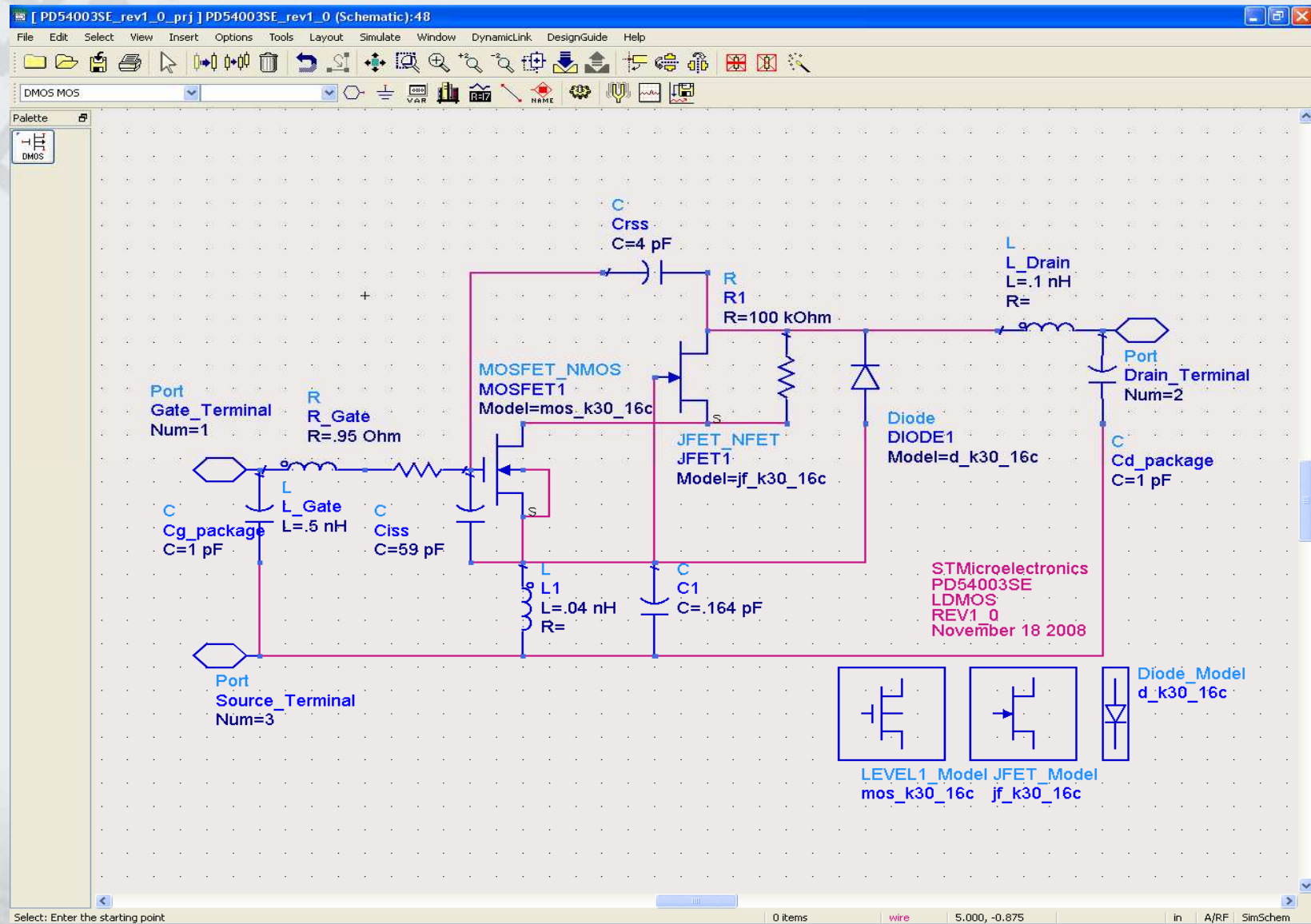


PD54003SE_rev1_0

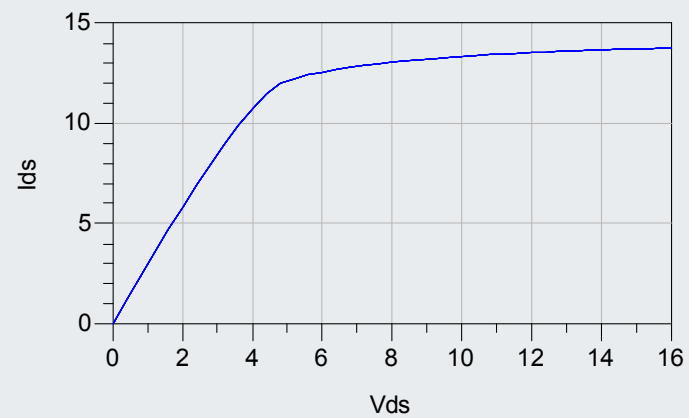
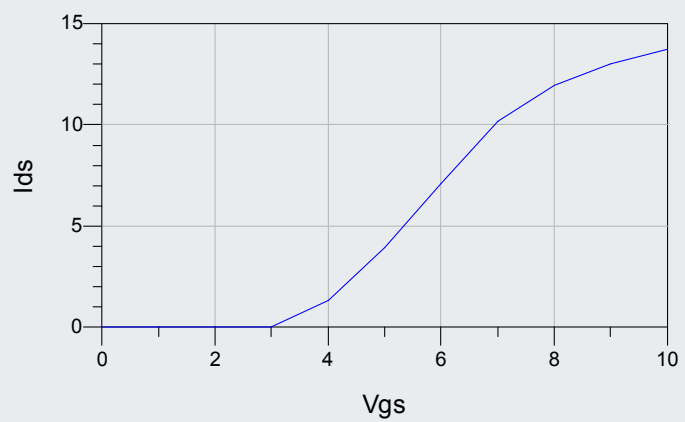


Quakertown , PA
Qtn-jp-210-rev1
November 18 , 2008



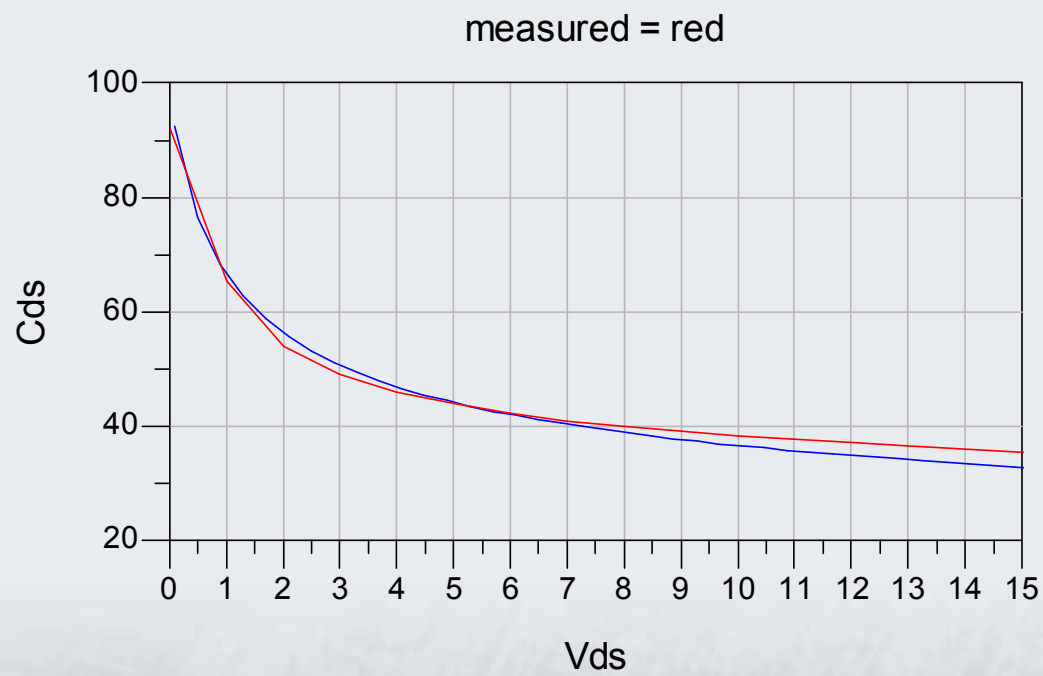
PD54003SE

DC



PD54003SE

C_{ds}



PD54003SE

S-parameter

measured 50 mA 7.5 Volt

freq	S(1,1)	S(2,1)	S(1,2)	S(2,2)
50.00 MHz	0.749 / -133.000	9.420 / 93.000	0.063 / 4.000	0.702 / -130.000
100.0 MHz	0.760 / -151.000	4.510 / 74.000	0.060 / -15.000	0.706 / -147.000
150.0 MHz	0.799 / -157.000	2.810 / 62.000	0.055 / -26.000	0.747 / -153.000
200.0 MHz	0.837 / -160.000	1.930 / 52.000	0.051 / -36.000	0.790 / -157.000
250.0 MHz	0.869 / -163.000	1.410 / 43.000	0.046 / -43.000	0.835 / -160.000
300.0 MHz	0.893 / -165.000	1.080 / 37.000	0.041 / -49.000	0.861 / -162.000
350.0 MHz	0.913 / -167.000	0.840 / 31.000	0.037 / -53.000	0.885 / -165.000
400.0 MHz	0.932 / -169.000	0.680 / 26.000	0.033 / -58.000	0.905 / -167.000
450.0 MHz	0.941 / -170.000	0.550 / 21.000	0.029 / -61.000	0.918 / -169.000
500.0 MHz	0.949 / -172.000	0.460 / 18.000	0.026 / -66.000	0.931 / -170.000
550.0 MHz	0.961 / -173.000	0.390 / 14.000	0.024 / -68.000	0.943 / -172.000
600.0 MHz	0.965 / -174.000	0.330 / 11.000	0.021 / -69.000	0.947 / -173.000
650.0 MHz	0.969 / -176.000	0.290 / 9.000	0.019 / -74.000	0.954 / -174.000

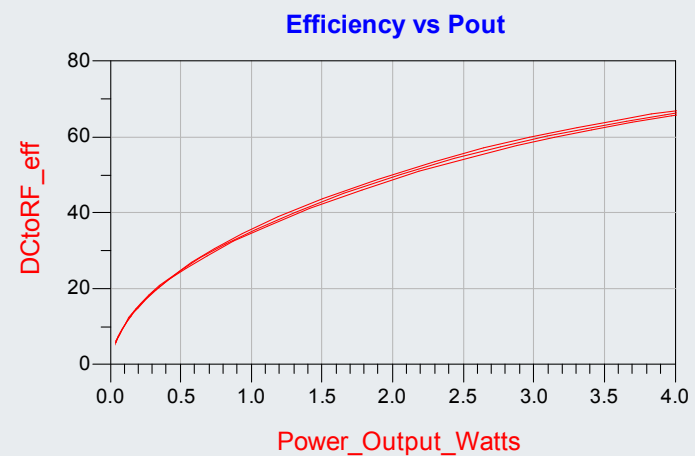
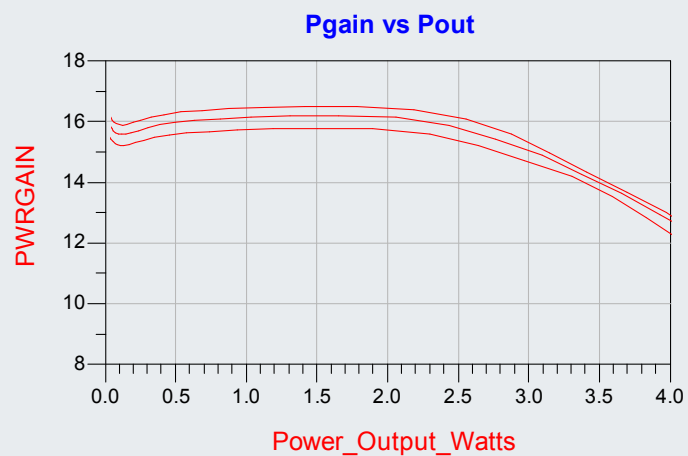
simulated 50 mA 7.5 Volt

freq	S(1,1)	S(2,1)	S(1,2)	S(2,2)
50.00 MHz	0.784 / -151.885	13.317 / 93.664	0.039 / 4.313	0.660 / -146.269
100.0 MHz	0.787 / -163.725	6.591 / 80.208	0.038 / -8.490	0.669 / -157.296
150.0 MHz	0.801 / -167.312	4.233 / 71.039	0.037 / -16.998	0.697 / -159.846
200.0 MHz	0.818 / -169.090	3.020 / 63.461	0.034 / -23.901	0.731 / -160.932
250.0 MHz	0.835 / -170.331	2.279 / 56.947	0.032 / -29.722	0.765 / -161.815
300.0 MHz	0.851 / -171.399	1.783 / 51.297	0.029 / -34.655	0.795 / -162.743
350.0 MHz	0.866 / -172.400	1.431 / 46.381	0.027 / -38.823	0.823 / -163.727
400.0 MHz	0.878 / -173.364	1.173 / 42.096	0.025 / -42.319	0.846 / -164.732
450.0 MHz	0.889 / -174.296	0.977 / 38.349	0.022 / -45.227	0.865 / -165.720
500.0 MHz	0.898 / -175.194	0.825 / 35.063	0.020 / -47.609	0.882 / -166.670
550.0 MHz	0.906 / -176.058	0.705 / 32.170	0.018 / -49.516	0.896 / -167.568
600.0 MHz	0.913 / -176.887	0.609 / 29.614	0.017 / -50.983	0.908 / -168.410
650.0 MHz	0.918 / -177.683	0.531 / 27.348	0.015 / -52.027	0.917 / -169.194



PD54003SE

480 MHz – 520 MHz Large Signal RF



PD54003SE

480 MHz – 520 MHz Large Signal RF

